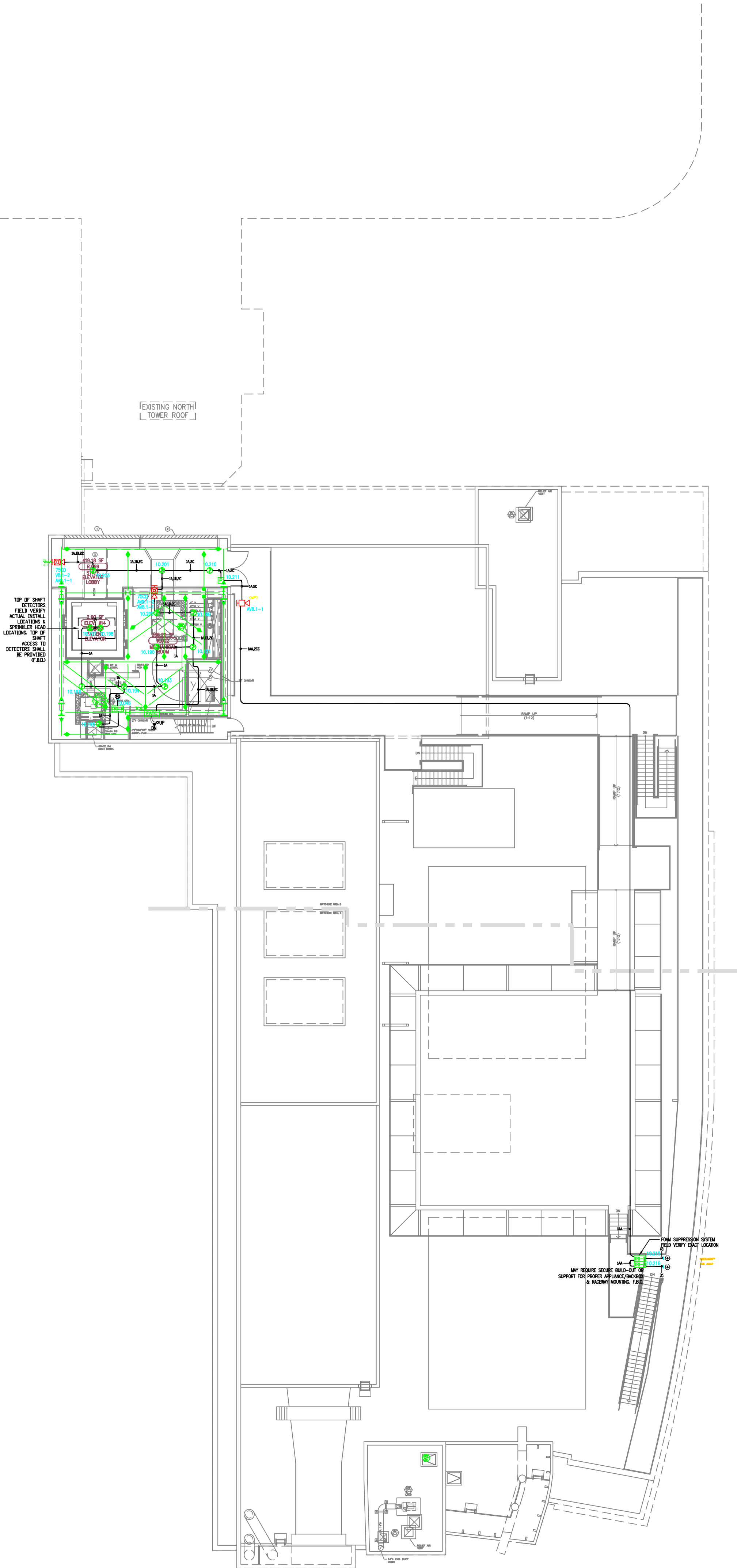


1) ALL RACEWAY RUNS INDICATED WITHIN THIS DRAWING PACKAGE ARE SHOWN DIAGRAMMATICALLY AND ARE FOR CIRCUITING PURPOSES ONLY. ALL RUNS SHOWN SHOULD NOT SERVE IN ANY WAY AS AN ACTUAL ROUTING GUIDE FOR INSTALLATION OF RACEWAYS. EXACT INSTALL LOCATION SHALL BE FIELD DETERMINED.

2) ADDITIONAL JUNCTION BOXES NOT SHOWN WITHIN THESE PLANS MAY BE REQUIRED TO ACCOMMODATE PROPER RACEWAY INSTALLATIONS & SIZING. IT IS THE ELECTRICAL CONTRACTORS RESPONSIBILITY TO DETERMINE THE NECESSARY AMOUNT OF JUNCTION BOXES/EXTENSION RINGS REQUIRED. ALL INSTALLATION MATERIAL SUCH AS CONDUIT FITTING, BOXES, AND HANGERS, ETC. NOT SUPPLIED BY SIEMENS.

3) AS FIELD CONDITIONS DICTATE ACTUAL RACEWAY INSTALLATIONS, DEVICE BACK BOXES AND JUNCTION BOXES SHALL BE SIZED PER FIELD INSTALLING CONDITIONS. DEVICE BACK BOX SIZES INDICATED WITHIN THIS DRAWING PACKAGE ARE MINIMUM REQUIREMENTS ONLY. AN INCREASE IN BACK BOX DEPTH, ADDITION OF EXTENSION BOX/RING, ETC. MAY BE REQUIRED IN ORDER TO PROPERLY ACCOMMODATE FOR WIRE QUANTITIES INSTALLED WITHIN THE RACEWAY.

4) THE INSTALLATION OF DEVICE BACKBOXES & WIRE SHALL BE SIZED AND INSTALLED PER CEC. IN ADDITION SUCH BOXES & WIRE SHALL BE INSTALLED IN A MANNER AS TO ALLOW FOR THE EASE OF DEVICE INSTALLATION. THE INSTALLATION OF DEVICES WHICH REQUIRE EXCESSIVE FORCE, THE PINCHING OF WIRES, RESULT IN GROUND FAULTS, ETC. IN ORDER TO PROPERLY SEAT THE DEVICE TO IT'S FINISHED SURFACE SHALL BE CONSIDERED UNACCEPTABLE AND A NON-SIEMENS INSTALLATION STANDARD.



MCCARTHY APPROVAL

A. Approved as noted for architectural Review

B. Review and Reinstall

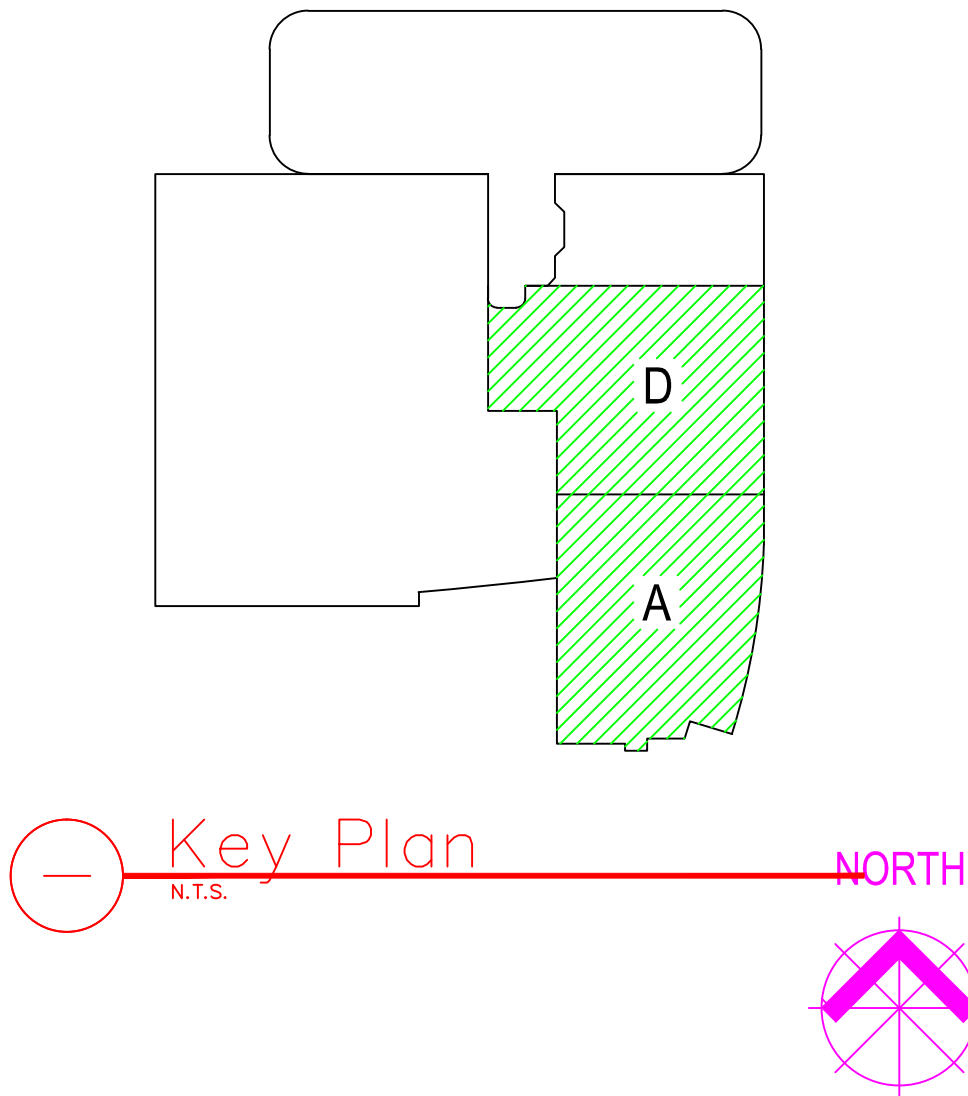
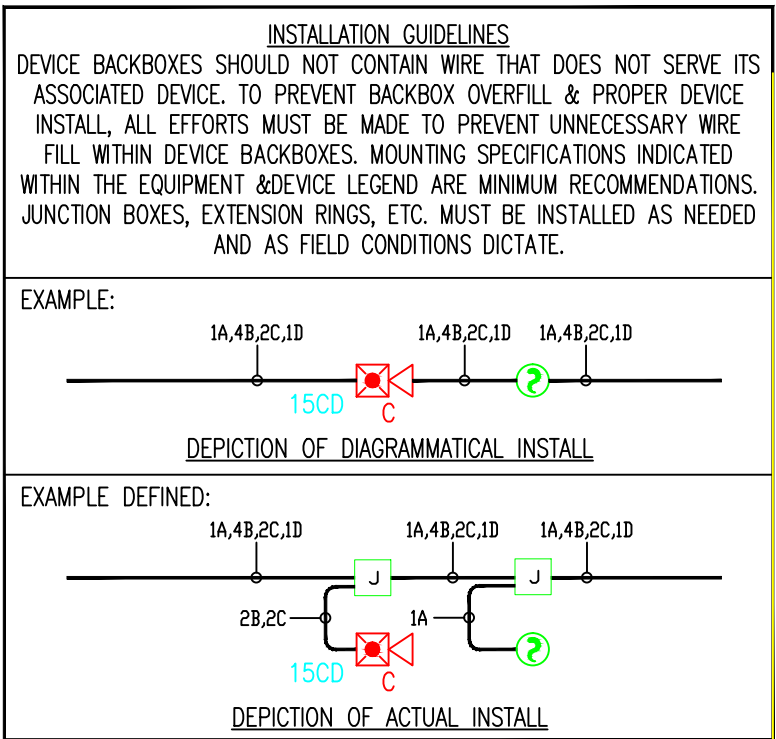
C. Re-punch

This review is for general conformance with Plans and Specifications only. Any deviations from same not clearly noted by the Engineer have not been reviewed. Reviewer shall not constitute a complete check of detailed dimensions or construction details. Reviewer shall not constitute responsibility for any error or deviation from contract requirements.

McCarthy

By _____ On 11/30/2012

CHOP DRAWING REFERENCE NO. _____



SIEMENS

CALIFORNIA STATE CONTRACTORS
LICENSE NO.: #758796 - B/ C10/ C16/ C20

Siemens Building Technologies, Inc.
FIS FIRE/LIFE SAFETY DIVISION

10775 Business Center Drive
Cypress, California 90630 USA

Phone: (714) 761-2200
Fax: (714) 220-4956

This drawing and the information and design application herein contained is the property of SIEMENS BUILDING TECHNOLOGIES, Inc. and is loaned upon the express condition that the same be returned to SIEMENS BUILDING TECHNOLOGIES, Inc. upon request; all information herein contained shall be treated as secret and confidential; no reproduction of this drawing or part thereof shall be made without the written consent of SIEMENS BUILDING TECHNOLOGIES, Incorporated.



BUILDING ELECTRONIC CONTROLS, INC.
2246 Lindsay Way
Glendora, CA 91740
PHONE: (909) 305-1600
FAX #: (909) 305-1604

LICENSE NO.: 729805
CLASSIFICATION (S): C-7 C10
EXPIRATION DATE: 11/30/2012
RICHARD TAYLOR

- NOTES:
- INTERFACE TO PATIENT ROOM DOME LIGHT. DOME LIGHT & POWER SHALL BE FURNISHED AND INSTALLED BY OTHERS.
 - NOT USED
 - INTERFACE TO VEN DOOR / ROLL-DOWN DOOR / SHUTTER FOR RELEASE. EQUIPMENT & POWER SHALL BE FURNISHED AND INSTALLED BY OTHERS.
 - INTERFACE FOR MONITORING STATUS OF EQUIPMENT.
 - SYNCHRONIZING CONFIGURATION OF ALL PAD PANELS.
 - KEY? ACTIVATION & MONITORING / GTRI-20 MONITORING FOR PAD PANELS.
 - INTERFACE FOR RELEASE OF MAGNETIC DOOR HOLD OPEN DEVICES.
 - INTERFACE FOR RELEASE OF COMBINATION SMOKE FIRE DAMPER CIRCUITS (EXCLUDING ISOLATION ROOMS).
 - INTERFACE FOR ELEVATOR RECALL (PRIMARY)
 - INTERFACE FOR ELEVATOR RECALL (ALT-RECALL)
 - INTERFACE FOR ELEVATOR SHUNT TRIP
 - INTERFACE FOR ELEVATOR SHUNT TRIP (BATTERY)
 - INTERFACE FOR ELEVATOR CAB LIGHT (STEADY)
 - INTERFACE FOR ELEVATOR CAB LIGHT (FLASHING)
 - INTERFACE FOR RELEASE OF COMBINATION SMOKE FIRE DAMPER CIRCUITS FOR ISOLATION ROOMS ONLY.
 - INTERFACE FOR HVAC SHUTDOWN
 - INTERFACE FOR MONITORING OF DISCONNECT SWITCH
 - MONITOR MODULE TO MONITOR ASPIRATING SMOKE DETECTION PANEL.
-PRE-ALARM
-FIRE 2
-FIRE 1
-TROUBLE
 - CONTROL RELAY (GTRI-20) IS PROVIDED FOR ASPIRATING SMOKE DETECTION PANEL RESET
 - MONITOR MODULES TO MONITOR PREACTION PANEL
-ALARM
-SUPERVISORY
-TROUBLE
 - PROVIDE 120V AC, 20 AMP DEDICATED CIRCUIT FOR THE POWER SUPPLY
 - CONTROL RELAY (GTRI-20) IS PROVIDED FOR DIMMER CONTROLS ACTIVATION

- ☐ MXL ☐ VOICE ☐ XL3 ☐ SYSTEM3
☒ XLS ☐ FS-250 ☐ EST3 ☐ OTHER

Rev No.	Date	Remarks	Initial
07/20/12	DESIGN-REVISION		
11/21/11	DESIGN-REVISION		
07/21/11	DESIGN-REVISION		
05/02/11	FULLERTON FIRE DEPARTMENT CORRECTIONS		
11/30/10	DISPATCH-1		
07/30/10	DISPATCH-1		
11/05/09	BACKGROUND-REVISIONS		

Rev No.	Date	Remarks	Initial
Drawn	H.JEANG		
Checked	-		
Approved	-		
Date	07.30.09		
Scale	0'-1/16" = 1'-0"		

FIRE ALARM FLOORPLAN
PENTHOUSE 2 - COMPOSITE

Job Number: 440P-056306

Project: CHILDRENS HOSPITAL OF
ORANGE COUNTY - TOWER II
455 SOUTH MAIN STREET
ORANGE, CALIFORNIA 92868-3874

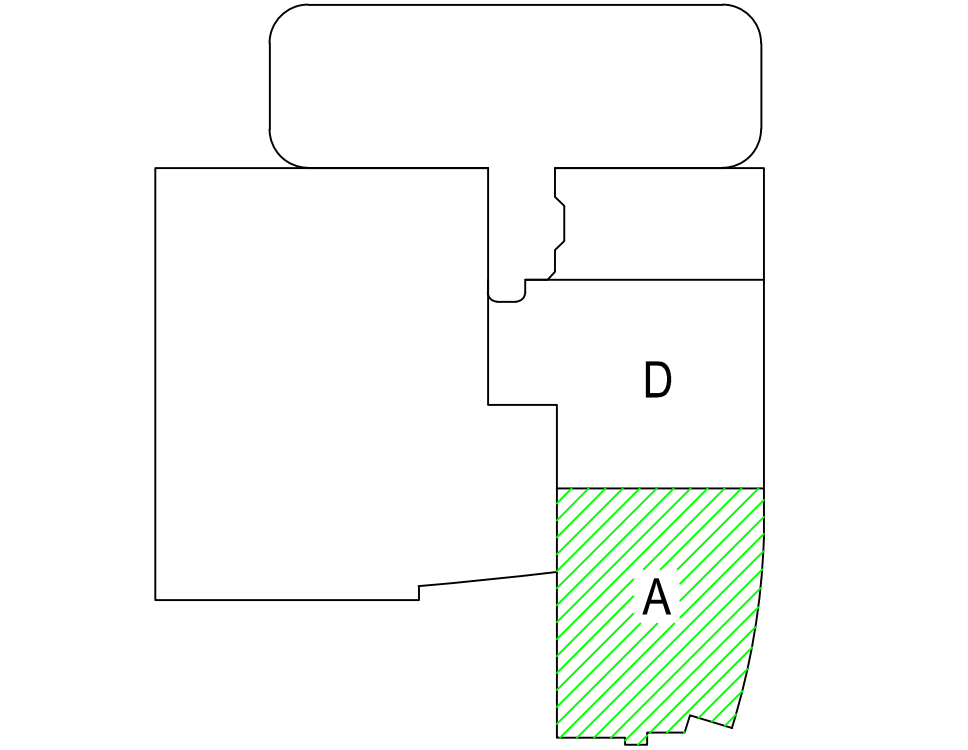
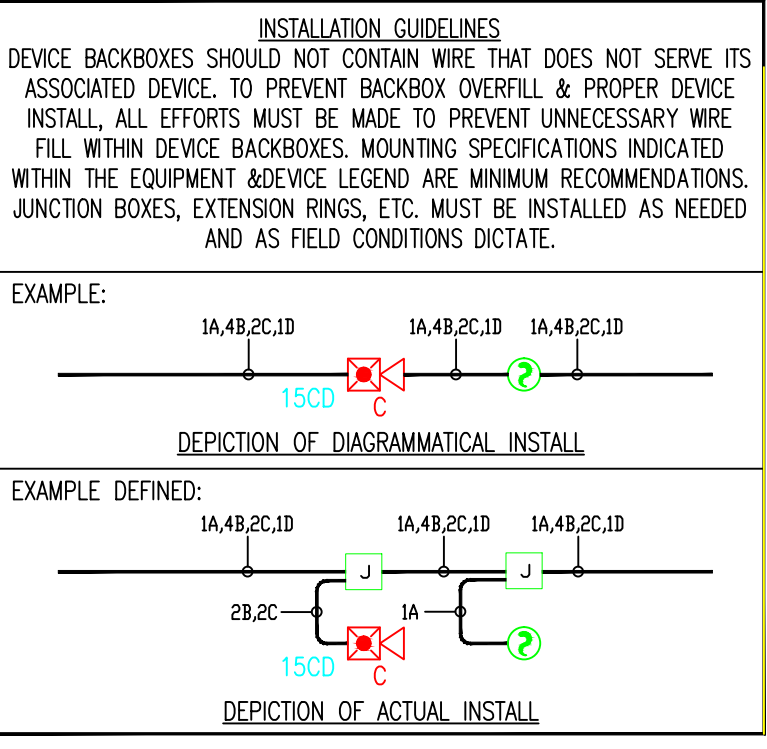
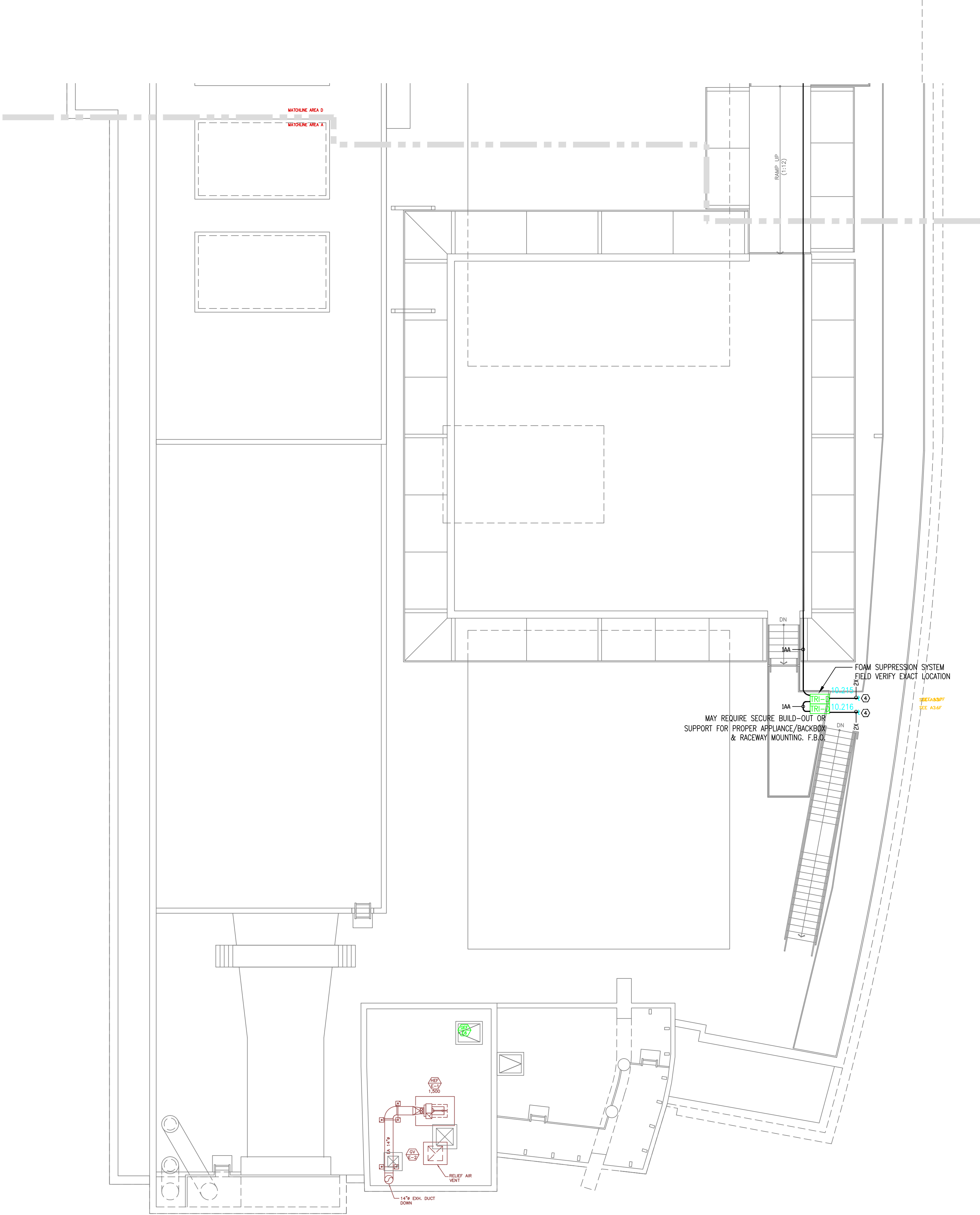
Drawing Number: EF1.90

1) ALL RACEWAY RUNS INDICATED WITHIN THIS DRAWING PACKAGE ARE SHOWN DIAGRAMMATICALLY AND ARE FOR CIRCUITING PURPOSES ONLY. ALL RUNS SHOWN SHOULD NOT SERVE IN ANY WAY AS AN ACTUAL ROUTING GUIDE FOR INSTALLATION OF RACEWAYS. EXACT INSTALL LOCATION SHALL BE FIELD DETERMINED.

2) ADDITIONAL JUNCTION BOXES NOT SHOWN WITHIN THESE PLANS MAY BE REQUIRED TO ACCOMMODATE PROPER RACEWAY INSTALLATIONS & SIZING. IT IS THE ELECTRICAL CONTRACTORS RESPONSIBILITY TO DETERMINE THE NECESSARY AMOUNT OF JUNCTION BOXES/EXTENSION RINGS REQUIRED. ALL INSTALLATION MATERIAL SUCH AS CONDUIT FITTING, BOXES, AND HANGERS, ETC. NOT SUPPLIED BY SIEMENS.

3) AS FIELD CONDITIONS DICTATE ACTUAL RACEWAY INSTALLATIONS, DEVICE BACK BOXES AND JUNCTION BOXES SHALL BE SIZED PER FIELD INSTALLING CONDITIONS. DEVICE BACK BOX SIZES INDICATED WITHIN THIS DRAWING PACKAGE ARE MINIMUM REQUIREMENTS ONLY. AN INCREASE IN BACK BOX DEPTH, ADDITION OF EXTENSION BOX/RING, ETC. MAY BE REQUIRED IN ORDER TO PROPERLY ACCOMMODATE FOR WIRE QUANTITIES INSTALLED WITHIN THE RACEWAY.

4) THE INSTALLATION OF DEVICE BACKBOXES & WIRE SHALL BE SIZED AND INSTALLED PER CEC. IN ADDITION SUCH BOXES & WIRE SHALL BE INSTALLED IN A MANNER AS TO ALLOW FOR THE EASE OF DEVICE INSTALLATION. THE INSTALLATION OF DEVICES WHICH REQUIRE EXCESSIVE FORCE, THE PINCHING OF WIRES, RESULT IN GROUND FAULTS, ETC. IN ORDER TO PROPERLY SEAT THE DEVICE TO IT'S FINISHED SURFACE SHALL BE CONSIDERED UNACCEPTABLE AND A NON-SIEMENS INSTALLATION STANDARD.



SIEMENS

CALIFORNIA STATE CONTRACTORS
LICENSE NO.: #758796 - B/ C10/ C16/ C20

Siemens Building Technologies, Inc.
FIS FIRE/LIFE SAFETY DIVISION

10775 Business Center Drive
Cypress, California 90630 USA

Phone: (714) 761-2200
Fax: (714) 220-4956

This drawing and the information and design application herein contained is the property of SIEMENS BUILDING TECHNOLOGIES, Inc. and is loaned upon the express condition that the same be returned to SIEMENS BUILDING TECHNOLOGIES, Inc. upon request; all information herein contained shall be treated as secret and confidential; no reproduction of this drawing or part thereof shall be made without the written consent of SIEMENS BUILDING TECHNOLOGIES, Incorporated.



BUILDING ELECTRONIC CONTROLS, INC.
2246 Lindsay Way
Glendora, CA 91740
PHONE: (909) 305-1600
FAX #: (909) 305-1604

LICENSE NO.: 729805
CLASSIFICATION (S): C-7 C10
EXPIRATION DATE: 11/30/2012
RICHARD TAYLOR

- NOTES:
- ① INTERFACE TO PATIENT ROOM DOME LIGHT, DOME LIGHT & POWER SHALL BE FURNISHED AND INSTALLED BY OTHERS.
 - ② NOT USED
 - ③ INTERFACE TO VEN DOOR / ROLL-DOWN DOOR / SHUTTER FOR RELEASE EQUIPMENT & POWER SHALL BE FURNISHED AND INSTALLED BY OTHERS.
 - ④ INTERFACE FOR MONITORING STATUS OF EQUIPMENT.
 - ⑤ SYNCHRONIZING CONFIGURATION OF ALL PAD PANELS.
 - ⑥ GEPY ACTIVATION & MONITORING / GTRI-RO MONITORING FOR PAD PANELS.
 - ⑦ INTERFACE FOR RELEASE OF MAGNETIC DOOR HOLD OPEN DEVICES.
 - ⑧ INTERFACE FOR RELEASE OF COMBINATION SMOKE FIRE DAMPER CIRCUITS (EXCLUDING ISOLATION ROOMS).
 - ⑨ INTERFACE FOR ELEVATOR RECALL (PRIMARY)
 - ⑩ INTERFACE FOR ELEVATOR RECALL (ALT-RECALL)
 - ⑪ INTERFACE FOR ELEVATOR SHUNT TRIP
 - ⑫ INTERFACE FOR ELEVATOR SHUNT TRIP (BATTERY)
 - ⑬ INTERFACE FOR ELEVATOR CAB LIGHT (STEADY)
 - ⑭ INTERFACE FOR ELEVATOR CAB LIGHT (FLASHING)
 - ⑮ INTERFACE FOR RELEASE OF COMBINATION SMOKE FIRE DAMPER CIRCUITS FOR ISOLATION ROOMS ONLY.
 - ⑯ INTERFACE FOR HVAC SHUTDOWN
 - ⑰ INTERFACE FOR MONITORING OF DISCONNECT SWITCH
 - ⑱ MONITOR MODULE TO MONITOR ASPIRATING SMOKE DETECTION PANEL.
-FIRE 1
-FIRE 2
-TROUBLE
 - ⑲ CONTROL RELAY (GTRI-RO) IS PROVIDED FOR ASPIRATING SMOKE DETECTION PANEL RESET
 - ⑳ MONITOR MODULES TO MONITOR PREACTION PANEL
-ALARM
-SUPERVISORY
-TROUBLE
 - ㉑ PROVIDE 120V AC, 200 AMPS DEDICATED CIRCUIT FOR THE POWER SUPPLY
 - ㉒ CONTROL RELAY (GTRI-RO) IS PROVIDED FOR DIMMER CONTROLS ACTIVATION

MCCARTHY APPROVAL

A. Approved as noted for architectural Review ☐
B. Review and Rejected ☐
C. Rejected ☐

This review is for general conformance with Plans and Specifications only. Any deviations from same not clearly noted by the Engineer have not been reviewed. Reviewer shall not constitute a complete check of detailed dimensions or construction, and shall not release the Engineer of contractual responsibility for any error or deviation from contract requirements.

McCarthy

By: _____ On: _____
CHOP DRAWING REFERENCE NO. _____

- ☐ MXL ☐ VOICE ☐ XL3 ☐ SYSTEM3
- ☒ XLS ☐ FS-250 ☐ EST3 ☐ OTHER

OSHPD NO. #: IL-072072-30

07/20/12	DESIGN REVISION	-
11/21/11	DESIGN REVISION	-
07/21/11	DESIGN REVISION	-
05/02/11	FULLERTON FIRE DEPARTMENT CORRECTIONS	-
11/30/10	DISPATCH CENTER	LF
07/30/10	DISPATCH CENTER	LF
11/05/09	BACKGROUND REVISIONS	FM

Rev No.	Date	Remarks	Initial
Drawn	H,JEANG		
Checked	-		
Approved	-		
Date	07.30.09		
Scale	0'-1/8" = 1'-0"		

FIRE ALARM FLOORPLAN
PENTHOUSE 2 - AREA A

Job Number: 440P-056306

Project: CHILDRENS HOSPITAL OF
ORANGE COUNTY - TOWER II
455 SOUTH MAIN STREET
ORANGE, CALIFORNIA 92868-3874

Drawing Number: EF3.9A

1.) ALL RACEWAY RUNS INDICATED WITHIN THIS DRAWING PACKAGE ARE SHOWN DIAGRAMMATICALLY AND ARE FOR CIRCUITING PURPOSES ONLY. ALL RUNS SHOWN SHOULD NOT SERVE IN ANY WAY AS AN ACTUAL ROUTING GUIDE FOR INSTALLATION OF RACEWAYS. EXACT INSTALL LOCATION SHALL BE FIELD DETERMINED.

2.) ADDITIONAL JUNCTION BOXES NOT SHOWN WITHIN THESE PLANS MAY BE REQUIRED TO ACCOMMODATE PROPER RACEWAY INSTALLATIONS & SIZING. IT IS THE ELECTRICAL CONTRACTORS RESPONSIBILITY TO DETERMINE THE NECESSARY AMOUNT OF JUNCTION BOXES/EXTENSION RINGS REQUIRED. ALL INSTALLATION MATERIAL, SUCH AS CONDUIT FITTING, BOXES, AND HANGERS, ETC. NOT SUPPLIED BY SIEMENS.

3.) AS FIELD CONDITIONS DICTATE ACTUAL RACEWAY INSTALLATIONS, DEVICE BACK BOXES AND JUNCTION BOXES SHALL BE SIZED PER FIELD INSTALLING CONDITIONS. DEVICE BACK BOX SIZES INDICATED WITHIN THIS DRAWING PACKAGE ARE MINIMUM REQUIREMENTS ONLY. AN INCREASE IN BACK BOX DEPTH, ADDITION OF EXTENSION BOX/RING, ETC. MAY BE REQUIRED IN ORDER TO PROPERLY ACCOMMODATE FOR WIRE QUANTITIES INSTALLED WITHIN THE RACEWAY.

4.) THE INSTALLATION OF DEVICE BACKBOXES & WIRE SHALL BE SIZED AND INSTALLED PER CEC. IN ADDITION SUCH BOXES & WIRE SHALL BE INSTALLED IN A MANNER AS TO ALLOW FOR THE EASE OF DEVICE INSTALLATION. THE INSTALLATION OF DEVICES WHICH REQUIRE EXCESSIVE FORCE, THE PINCHING OF WIRES, RESULT IN GROUND FAULTS, ETC. IN ORDER TO PROPERLY SEAT THE DEVICE TO IT'S FINISHED SURFACE SHALL BE CONSIDERED UNACCEPTABLE AND A NON-SIEMENS INSTALLATION STANDARD.

