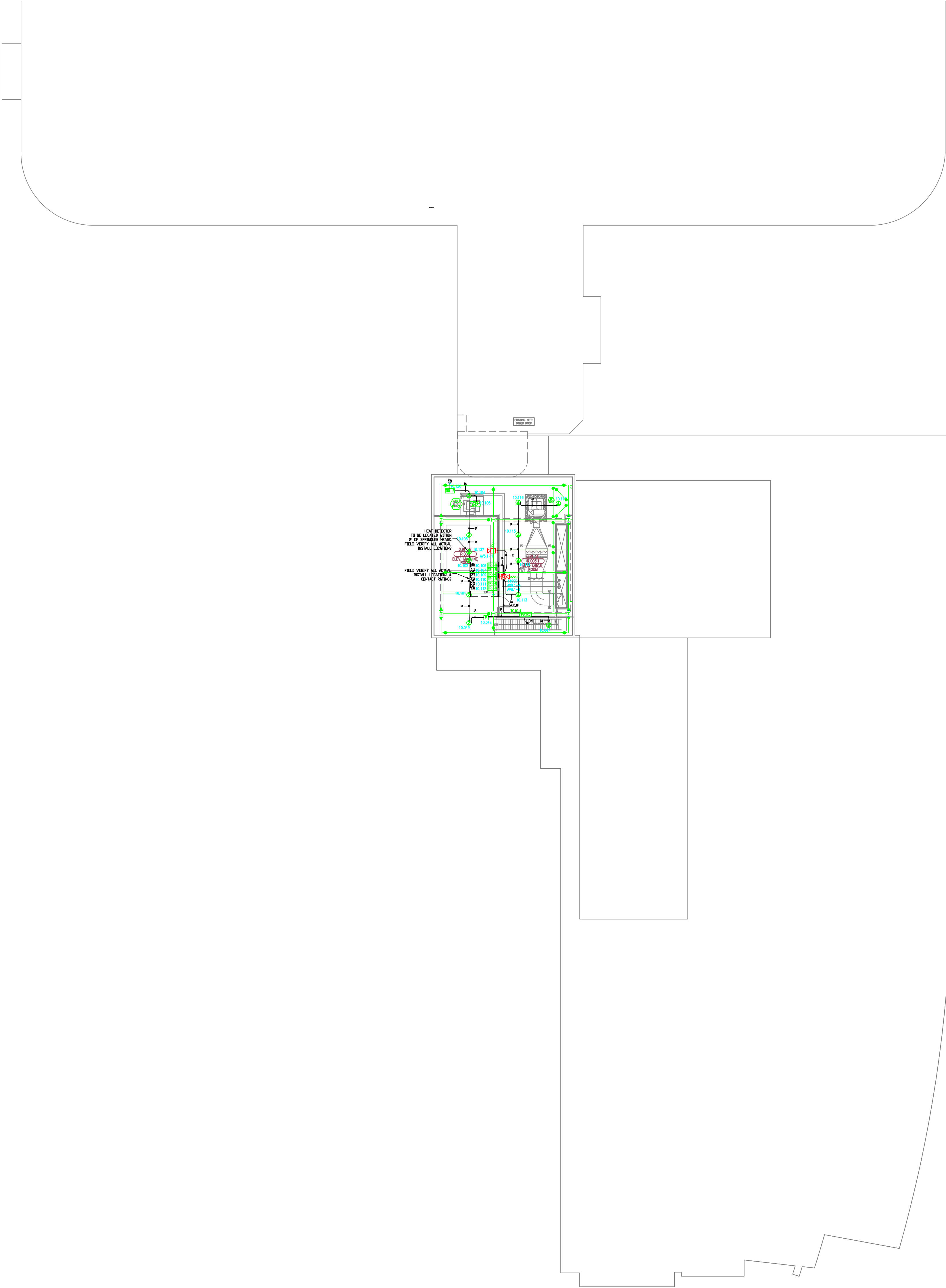


1.) ALL RACEWAY RUNS INDICATED WITHIN THIS DRAWING PACKAGE ARE SHOWN DIAGRAMMATICALLY AND ARE FOR CIRCUITING PURPOSES ONLY. ALL RUNS SHOWN SHOULD NOT SERVE IN ANY WAY AS AN ACTUAL ROUTING GUIDE FOR INSTALLATION OF RACEWAYS. EXACT INSTALL LOCATION SHALL BE FIELD DETERMINED.

2.) ADDITIONAL JUNCTION BOXES NOT SHOWN WITHIN THESE PLANS MAY BE REQUIRED TO ACCOMMODATE PROPER RACEWAY INSTALLATIONS & SIZING. IT IS THE ELECTRICAL CONTRACTORS RESPONSIBILITY TO DETERMINE THE NECESSARY AMOUNT OF JUNCTION BOXES/EXTENSION RINGS REQUIRED. ALL INSTALLATION MATERIAL SUCH AS CONDUIT FITTING, BOXES, AND HANGERS, ETC. NOT SUPPLIED BY SIEMENS.

3.) AS FIELD CONDITIONS DICTATE ACTUAL RACEWAY INSTALLATIONS, DEVICE BACK BOXES AND JUNCTION BOXES SHALL BE SIZED PER FIELD INSTALLING CONDITIONS. DEVICE BACK BOX SIZES INDICATED WITHIN THIS DRAWING PACKAGE ARE MINIMUM REQUIREMENTS ONLY. AN INCREASE IN BACK BOX DEPTH, ADDITION OF EXTENSION BOX/RING, ETC. MAY BE REQUIRED IN ORDER TO PROPERLY ACCOMMODATE FOR WIRE QUANTITIES INSTALLED WITHIN THE RACEWAY.

4.) THE INSTALLATION OF DEVICE BACKBOXES & WIRE SHALL BE SIZED AND INSTALLED PER CEC. IN ADDITION SUCH BOXES & WIRE SHALL BE INSTALLED IN A MANNER AS TO ALLOW FOR THE EASE OF DEVICE INSTALLATION. THE INSTALLATION OF DEVICES WHICH REQUIRE EXCESSIVE FORCE, THE PINCHING OF WIRES, RESULT IN GROUND FAULTS, ETC. IN ORDER TO PROPERLY SEAT THE DEVICE TO IT'S FINISHED SURFACE SHALL BE CONSIDERED UNACCEPTABLE AND A NON-SIEMENS INSTALLATION STANDARD.



TO BE INSTALLED BY FIELD VENDOR. ALL WIRING SHALL BE INSTALLED IN ACCORDANCE WITH THE NATIONAL ELECTRICAL CODE (NEC) AND THE CALIFORNIA ELECTRICAL CODE (CEC).

FILL VENDOR WITHIN RACEWAY WITH CONDUIT BUSHING.

MCCARTHY APPROVAL

A. Approved as noted for architectural Review

B. Review and Reinstall

C. Reinspect

This review is for general conformance with Plans and Specifications only. Any deviations from same not clearly noted by the Engineer have not been reviewed. Reviewer shall not constitute a complete check of installed dimensions or cause to accept or release the Engineer of contractual responsibility for any error or deviation from contract requirements.

McCarthy

By \_\_\_\_\_ On 11/30/2012

CHOP DRAWING REFERENCE NO. \_\_\_\_\_

INSTALLATION GUIDELINES

DEVICE BACKBOXES SHOULD NOT CONTAIN WIRE THAT DOES NOT SERVE ITS ASSOCIATED DEVICE. TO PREVENT BACKBOX OVERHILL & PROPER DEVICE INSTALL, ALL EFFORTS MUST BE MADE TO PREVENT UNNECESSARY WIRE. FILL WITHIN DEVICE BACKBOXES. MOUNTING SPECIFICATIONS INDICATED WITHIN THE EQUIPMENT ADOVICE LEGEND ARE MINIMUM RECOMMENDATIONS. JUNCTION BOXES, EXTENSION RINGS, ETC. MUST BE INSTALLED AS NEEDED AND AS FIELD CONDITIONS DICTATE.

EXAMPLE:

1A, 4B, 2C, 1D

15CO

1A, 4B, 2C, 1D

DEPICTION OF DIAGRAMMATICAL INSTALL

EXAMPLE DEFINED:

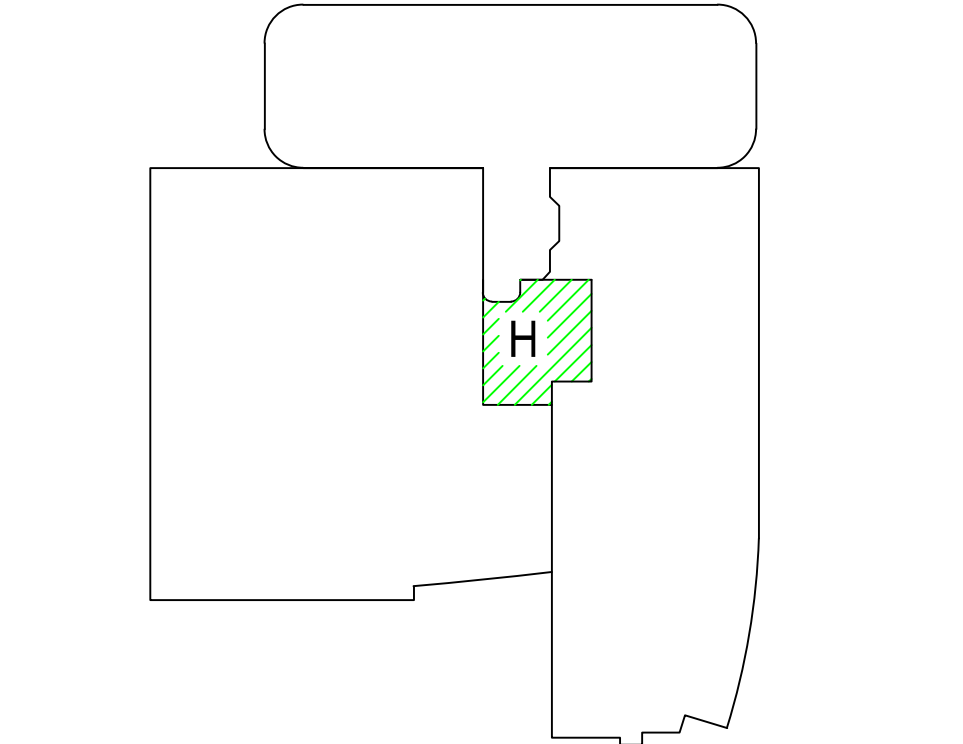
1A, 4B, 2C, 1D

2B, 2C

1A

1A, 4B, 2C, 1D

DEPICTION OF ACTUAL INSTALL



Key Plan  
N.T.S.

NORTH

# SIEMENS

CALIFORNIA STATE CONTRACTORS  
LICENSE NO.: #758796 - B/ C10/ C16/ C20

Siemens Building Technologies, Inc.  
FIS FIRE/LIFE SAFETY DIVISION

10775 Business Center Drive  
Cypress, California 90630 USA

Phone: (714) 761-2200  
Fax: (714) 220-4956

This drawing and the information and design application herein contained is the property of SIEMENS BUILDING TECHNOLOGIES, Inc. and is loaned upon the express condition that the same be returned to SIEMENS BUILDING TECHNOLOGIES, Inc. upon request; all information herein contained shall be treated as secret and confidential; no reproduction of this drawing or part thereof shall be made without the written consent of SIEMENS BUILDING TECHNOLOGIES, Incorporated.



BUILDING ELECTRONIC CONTROLS, INC.  
2246 Lindsay Way  
Glendora, CA 91740  
PHONE: (909) 305-1600  
FAX #: (909) 305-1604

LICENSE NO.: 729805  
CLASSIFICATION (S): C-7 C10  
EXPIRATION DATE: 11/30/2012  
RICHARD TAYLOR



- NOTES:
- ① INTERFACE TO PATIENT ROOM DOME LIGHT, DOME LIGHT & POWER SHALL BE FURNISHED AND INSTALLED BY OTHERS.
  - ② NOT USED
  - ③ INTERFACE TO VEN DOOR / ROLL-DOWN DOOR / SHUTTER FOR RELEASE EQUIPMENT & POWER SHALL BE FURNISHED AND INSTALLED BY OTHERS.
  - ④ INTERFACE FOR MONITORING STATUS OF EQUIPMENT.
  - ⑤ SYNCHRONIZING CONFIGURATION OF ALL PAD PANELS.
  - ⑥ (E)P ACTIVATION & MONITORING / (H)F-RS MONITORING FOR PAD PANELS.
  - ⑦ INTERFACE FOR RELEASE OF MAGNETIC DOOR HOLD OPEN DEVICES.
  - ⑧ INTERFACE FOR RELEASE OF COMBINATION SMOKE FIRE DAMPER CIRCUITS (EXCLUDING ISOLATION ROOMS).
  - ⑨ INTERFACE FOR ELEVATOR RECALL (PRIMARY)
  - ⑩ INTERFACE FOR ELEVATOR RECALL (ALT-RECALL)
  - ⑪ INTERFACE FOR ELEVATOR SHUNT TRIP
  - ⑫ INTERFACE FOR ELEVATOR SHUNT TRIP (BATTERY)
  - ⑬ INTERFACE FOR ELEVATOR CAB LIGHT (STEADY)
  - ⑭ INTERFACE FOR ELEVATOR CAB LIGHT (FLASHING)
  - ⑮ INTERFACE FOR RELEASE OF COMBINATION SMOKE FIRE DAMPER CIRCUITS FOR ISOLATION ROOMS ONLY.
  - ⑯ INTERFACE FOR HVAC SHUTDOWN
  - ⑰ INTERFACE FOR MONITORING OF DISCONNECT SWITCH
  - ⑱ MONITOR MODULE TO MONITOR ASPIRATING SMOKE DETECTION PANEL.  
-FIRE 2  
-FIRE 2  
-TROUBLE  
-FIRE 1  
-TROUBLE
  - ⑲ CONTROL RELAY (HTRI-R) IS PROVIDED FOR ASPIRATING SMOKE DETECTION PANEL RESET
  - ⑳ MONITOR MODULES TO MONITOR PREACTION PANEL  
-ALARM  
-SUPERVISORY  
-TROUBLE
  - ㉑ PROVIDE 120V AC, 200 AMPS DEDICATED CIRCUIT FOR THE POWER SUPPLY
  - ㉒ CONTROL RELAY (HTRI-R) IS PROVIDED FOR DIMMER CONTROLS ACTIVATION

- ☐ MXL ☐ VOICE ☐ XL3 ☐ SYSTEM3  
☒ XLS ☐ FS-250 ☐ EST3 ☐ OTHER

OSHPD NO. #: IL-072072-30

Δ	07/20/12	DESIGN REVISION	-
Δ	11/21/11	DESIGN REVISION	-
Δ	07/21/11	DESIGN REVISION	-
Δ	05/02/11	FULLERTON FIRE DEPARTMENT CORRECTIONS	-
Δ	11/30/10	DISPATCH CENTER	LF
Δ	07/30/10	DISPATCH CENTER	LF
Δ	11/05/09	BACKGROUND REVISIONS	PM

Rev No.	Date	Remarks	Initial
Drawn	H, JEANG		
Checked	-		
Approved	-		
Date	07.30.09		
Scale	0'-1/16" = 1'-0"		

FIRE ALARM FLOORPLAN  
PENTHOUSE 3 - COMPOSITE

Job Number: 440P-056306

Project: CHILDRENS HOSPITAL OF  
ORANGE COUNTY - TOWER II  
455 SOUTH MAIN STREET  
ORANGE, CALIFORNIA 92868-3874

Drawing Number: EF2.00

CHILDRENS HOSPITAL OF  
ORANGE COUNTY - TOWER II  
455 SOUTH MAIN STREET  
ORANGE, CALIFORNIA 92668-3874

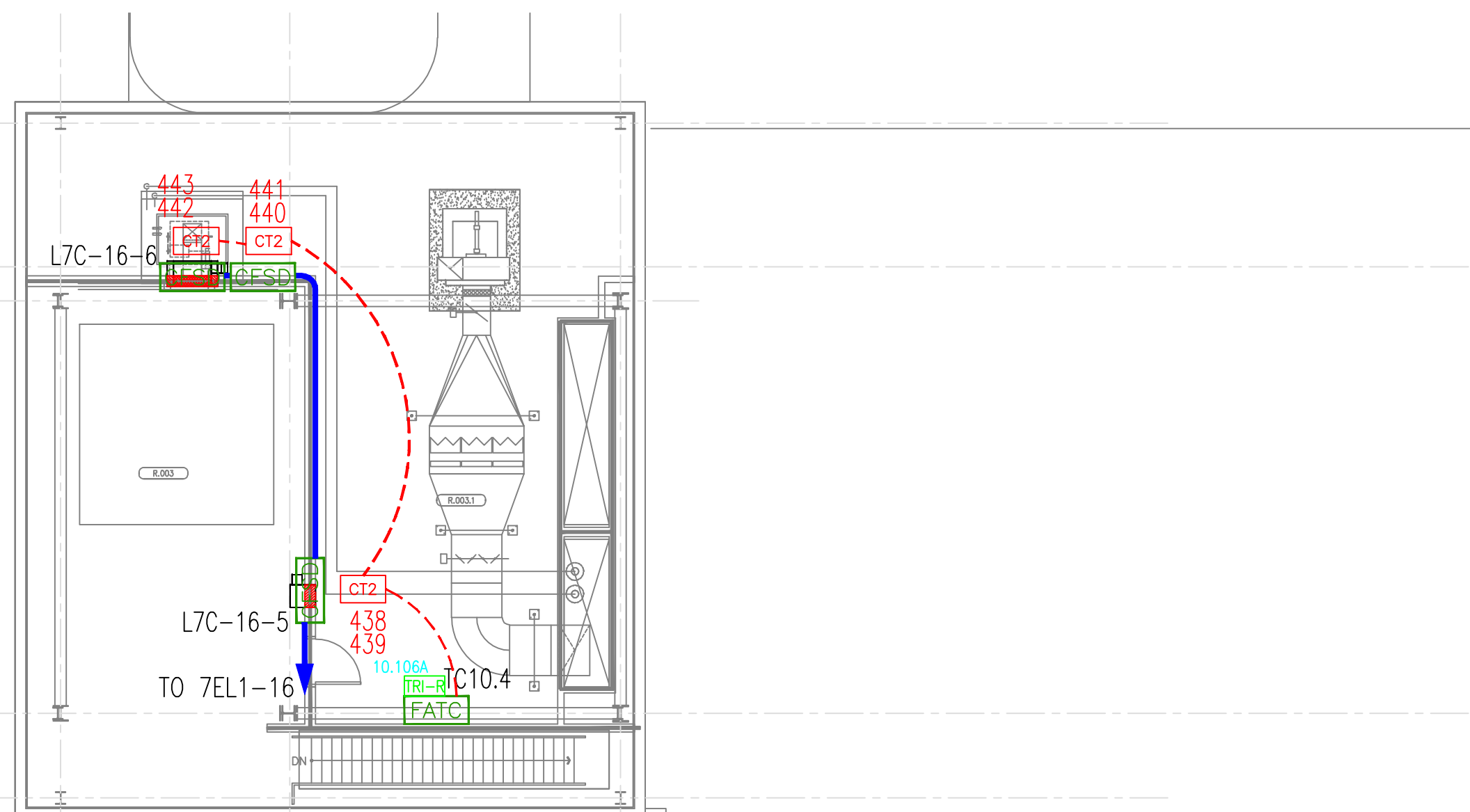
	ISSUED FOR PLANCHICK	03/08/1
①	DESIGN REVISION	07/18/1
②	DESIGN REVISION	11/22/1
③	DESIGN REVISION	11/06/1

## RECORD DRAWINGS

THESE DRAWINGS HAVE BEEN PREPARED BY BEC EXCLUSIVELY FOR INSTALLATION BY BEC. BEC ACCEPTS NO LIABILITY FOR CLAIMS BY OTHERS IF BEC IS NOT THE INSTALLER. THESE DRAWINGS ARE INSTRUMENTS OF SERVICE AND ARE THE PROPERTY OF BEC. ALL DESIGNS AND OTHER INFORMATION CONTAINED ON THESE DRAWINGS ARE FOR USE ON THE SPECIFIED PROJECT, INSTALLED ONLY BY BEC, AND SHALL NOT BE REPRODUCED, ALTERED, COPIED, OR USED FOR ANY OTHER PROJECT. TO COMPLETE THIS PROJECT OR OTHER PROJECT, BY OTHERS, WITHOUT FIRST OBTAINING THE EXPRESSED WRITTEN PERMISSION AND CONSENT OF BEC, THESE DRAWINGS SHALL NOT BE ASSIGNED TO A THIRD PARTY WITHOUT WRITTEN PERMISSION AND CONSENT FROM BEC. USE OF THESE DRAWINGS IN ANY SUCH MANNER WITHOUT BEC'S WRITTEN CONSENT SHALL CONSTITUTE TOTAL INDEMNIFICATION OF BEC AND ANY OTHER PARTY.



**SHEET TITLE**

**FA-10.11**

SYMBOL	MODEL	MAKE	DESCRIPTION	CSFM #	MOUNTING
FATC	N/A	BY OTHERS	-FIRE ALARM TERMINAL CABINET	N/A	-INSTALLED BY OTHERS
CT2	SIGA-CT2	EST	-DUAL TRANSPONDER	7300-1657:121	-4" SQ. BOX WITH SINGLE GANG RING
CFSD	N/A	BY OTHERS	-FIRE/SMOKE DAMPER	N/A	
J	N/A	BY OTHERS	-JUNCTION BOX	N/A	

NEW CONDUIT

NEW CABLE

LLA-20-1

↑ ↑ ↑ ↑

— DAMPER NUMBER  
— ELECTRIC CIRCUIT NUMBER  
— SMOKE COMPARTMENT  
— LEVEL



1) ALL RACEWAY RUNS INDICATED WITHIN THIS DRAWING PACKAGE ARE SHOWN DIAGRAMMATICALLY AND ARE FOR CIRCUITING PURPOSES ONLY. ALL RUNS SHOWN SHOULD NOT SERVE IN ANY WAY AS AN ACTUAL ROUTING GUIDE FOR INSTALLATION OF RACEWAYS. EXACT INSTALL LOCATION SHALL BE FIELD DETERMINED.

2) ADDITIONAL JUNCTION BOXES NOT SHOWN WITHIN THESE PLANS MAY BE REQUIRED TO ACCOMMODATE PROPER RACEWAY INSTALLATIONS & SIZING. IT IS THE ELECTRICAL CONTRACTORS RESPONSIBILITY TO DETERMINE THE NECESSARY AMOUNT OF JUNCTION BOXES/EXTENSION RINGS REQUIRED. ALL INSTALLATION MATERIAL, SUCH AS CONDUIT FITTING, BOXES, AND HANGERS, ETC. NOT SUPPLIED BY SIEMENS.

3) AS FIELD CONDITIONS DICTATE ACTUAL RACEWAY INSTALLATIONS, DEVICE BACK BOXES AND JUNCTION BOXES SHALL BE SIZED PER FIELD INSTALLING CONDITIONS. DEVICE BACK BOX SIZES INDICATED WITHIN THIS DRAWING PACKAGE ARE MINIMUM REQUIREMENTS ONLY. AN INCREASE IN BACK BOX DEPTH, ADDITION OF EXTENSION BOX/RING, ETC. MAY BE REQUIRED IN ORDER TO PROPERLY ACCOMMODATE FOR WIRE QUANTITIES INSTALLED WITHIN THE RACEWAY.

4) THE INSTALLATION OF DEVICE BACKBOXES & WIRE SHALL BE SIZED AND INSTALLED PER CEC. IN ADDITION SUCH BOXES & WIRE SHALL BE INSTALLED IN A MANNER AS TO ALLOW FOR THE EASE OF DEVICE INSTALLATION. THE INSTALLATION OF DEVICES WHICH REQUIRE EXCESSIVE FORCE, THE PINCHING OF WIRES, RESULT IN GROUND FAULTS, ETC. IN ORDER TO PROPERLY SEAT THE DEVICE TO IT'S FINISHED SURFACE SHALL BE CONSIDERED UNACCEPTABLE AND A NON-SIEMENS INSTALLATION STANDARD.

