

SIEMENS

CALIFORNIA STATE CONTRACTORS
LICENSE NO.: #758796 - B/ C10/ C16/ C20

Siemens Building Technologies, Inc.
FIS FIRE/LIFE SAFETY DIVISION

10775 Business Center Drive
Cypress, California 90630 USA

Phone: (714) 761-2200
Fax: (714) 220-4956

This drawing and the information and design application herein contained is the property of SIEMENS BUILDING TECHNOLOGIES, Inc. and is loaned upon the express condition that the same be returned to SIEMENS BUILDING TECHNOLOGIES, Inc. upon request; all information herein contained shall be treated as secret and confidential; no reproduction of this drawing or part thereof shall be made without the written consent of SIEMENS BUILDING TECHNOLOGIES, Incorporated.



BUILDING ELECTRONIC CONTROLS, INC.
2246 Lindsay Way
Glendora, CA 91740
PHONE: (909) 305-1600
FAX #: (909) 305-1604

LICENSE NO.: 729905
CLASSIFICATION (S): C-7 C10
EXPIRATION DATE: 11/30/2012
RICHARD TAYLOR



- NOTES:
- ① INTERFACE TO PATIENT ROOM DOME LIGHT, DOME LIGHT & POWER SHALL BE FURNISHED AND INSTALLED BY OTHERS.
 - ② NOT USED
 - ③ INTERFACE TO VEN DOOR / ROLL-DOWN DOOR / SHUTTER FOR RELEASE. EQUIPMENT & POWER SHALL BE FURNISHED AND INSTALLED BY OTHERS.
 - ④ INTERFACE FOR MONITORING STATUS OF EQUIPMENT.
 - ⑤ SYNCHRONIZING CONFIGURATION OF ALL PAD PANELS.
 - ⑥ GEPY ACTIVATION & MONITORING / GTRI-SD MONITORING FOR PAD PANELS.
 - ⑦ INTERFACE FOR RELEASE OF MAGNETIC DOOR HOLD OPEN DEVICES.
 - ⑧ INTERFACE FOR RELEASE OF COMBINATION SMOKE FIRE DAMPER CIRCUITS (EXCLUDING ISOLATION ROOMS).
 - ⑨ INTERFACE FOR ELEVATOR RECALL (PRIMARY)
 - ⑩ INTERFACE FOR ELEVATOR RECALL (ALT-RECALL)
 - ⑪ INTERFACE FOR ELEVATOR SHUNT TRIP
 - ⑫ INTERFACE FOR ELEVATOR SHUNT TRIP (BATTERY)
 - ⑬ INTERFACE FOR ELEVATOR CAB LIGHT (STEADY)
 - ⑭ INTERFACE FOR ELEVATOR CAB LIGHT (FLASHING)
 - ⑮ INTERFACE FOR RELEASE OF COMBINATION SMOKE FIRE DAMPER CIRCUITS FOR ISOLATION ROOMS ONLY.
 - ⑯ INTERFACE FOR HVAC SHUTDOWN
 - ⑰ INTERFACE FOR MONITORING OF DISCONNECT SWITCH
 - ⑱ MONITOR MODULE TO MONITOR ASPIRATING SMOKE DETECTION PANEL.
-PRE-ALARM
-FIRE 2
-FIRE 1
-TROUBLE
 - ⑲ CONTROL RELAY (GTRI-SD) IS PROVIDED FOR ASPIRATING SMOKE DETECTION PANEL RESET
 - ⑳ MONITOR MODULES TO MONITOR PREACTION PANEL
-ALARM
-SUPERVISORY
-TROUBLE
 - ㉑ PROVIDE 120V AC, 200 AMPS DEDICATED CIRCUIT FOR THE POWER SUPPLY
 - ㉒ CONTROL RELAY (GTRI-SD) IS PROVIDED FOR DIMMER CONTROLS ACTIVATION

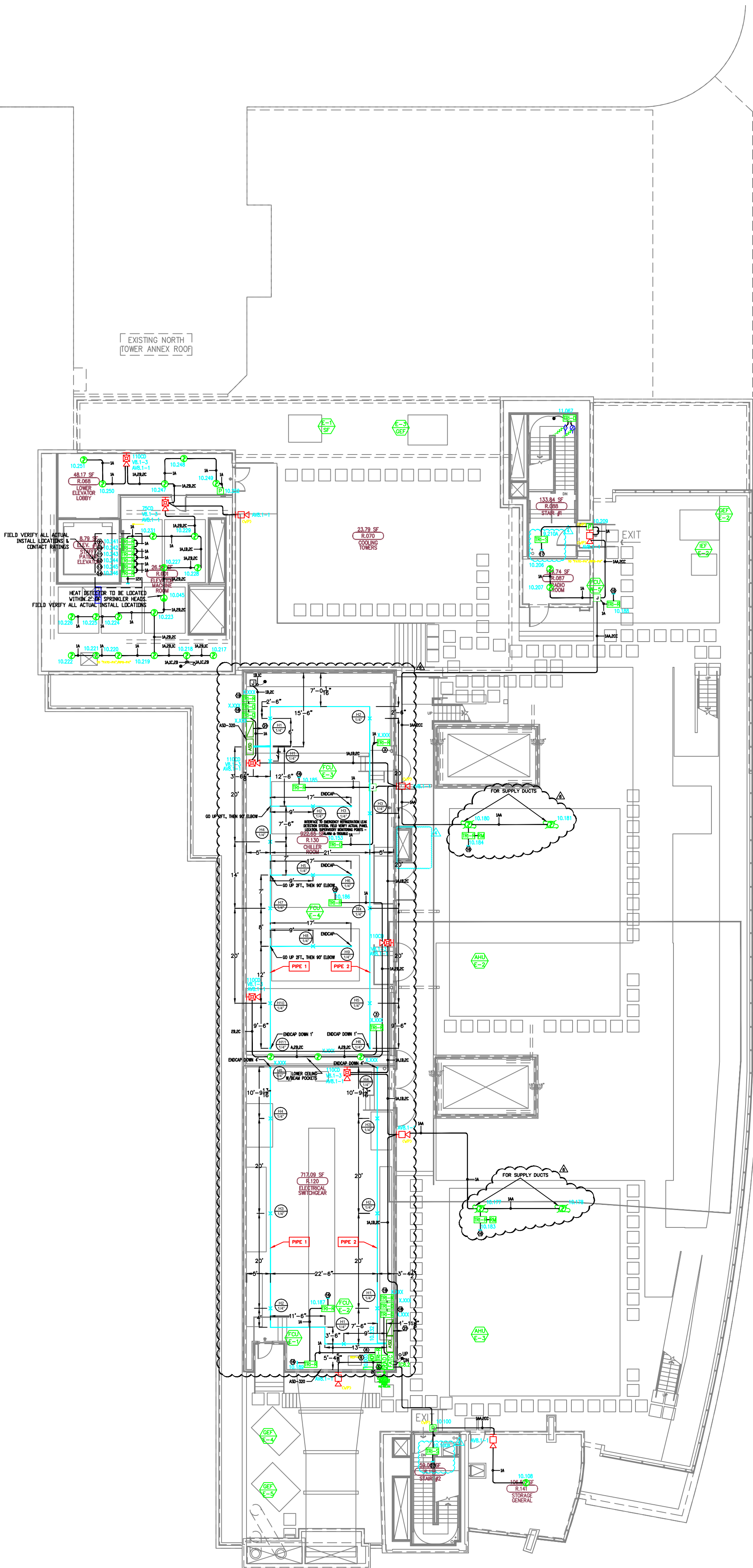
MCCARTHY APPROVAL

A. Approved as noted for architectural Review ☐
B. Review and Rejected ☐
C. Rejected ☐

This review is for general conformance with Plans and Specifications only. Any deviations from same not clearly noted by the Engineer have not been reviewed. Reviewer shall not constitute a complete check of detailed dimensions or notes to which to release the Engineer of contractual responsibility for any error or deviation from contract requirements.

McCarthy

By: _____ On: _____
CHOP DRAWING REFERENCE NO. _____



- ☐ MXL ☐ VOICE ☐ XL3 ☐ SYSTEM3
☒ XLS ☐ FS-250 ☐ EST3 ☐ OTHER

OSHPD NO. #: IL-072072-30

Δ	07/20/12	DESIGN REVISION	-
Δ	11/21/11	DESIGN REVISION	-
Δ	07/21/11	DESIGN REVISION	-
Δ	05/02/11	FULLERTON FIRE DEPARTMENT CORRECTIONS	-
Δ	11/30/10	DISPATCH CENTER	LF
Δ	07/30/10	DISPATCH CENTER	LF
Δ	11/05/09	BACKGROUND REVISIONS	FM

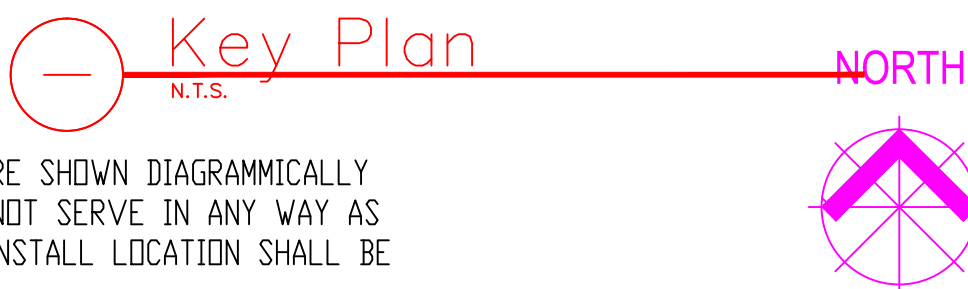
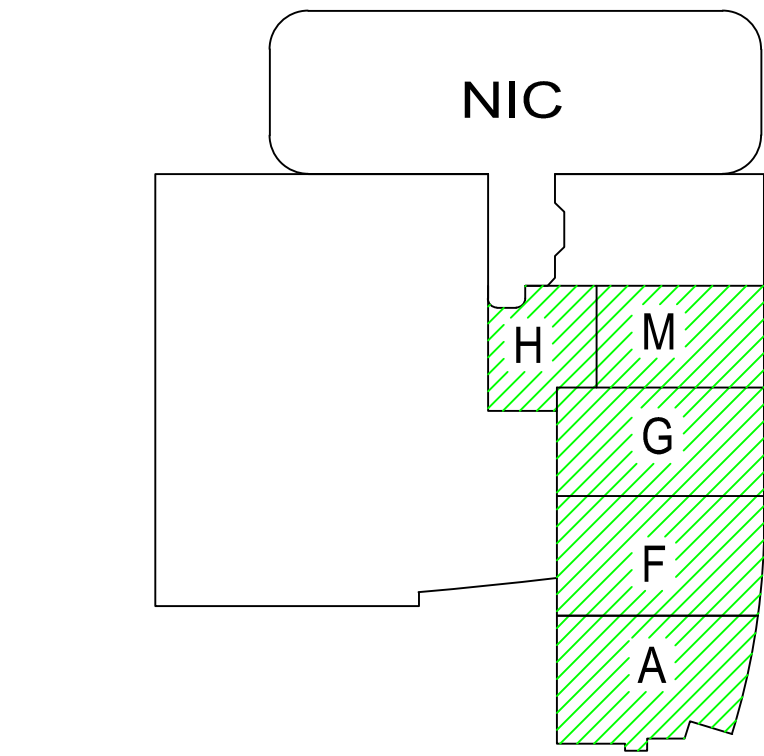
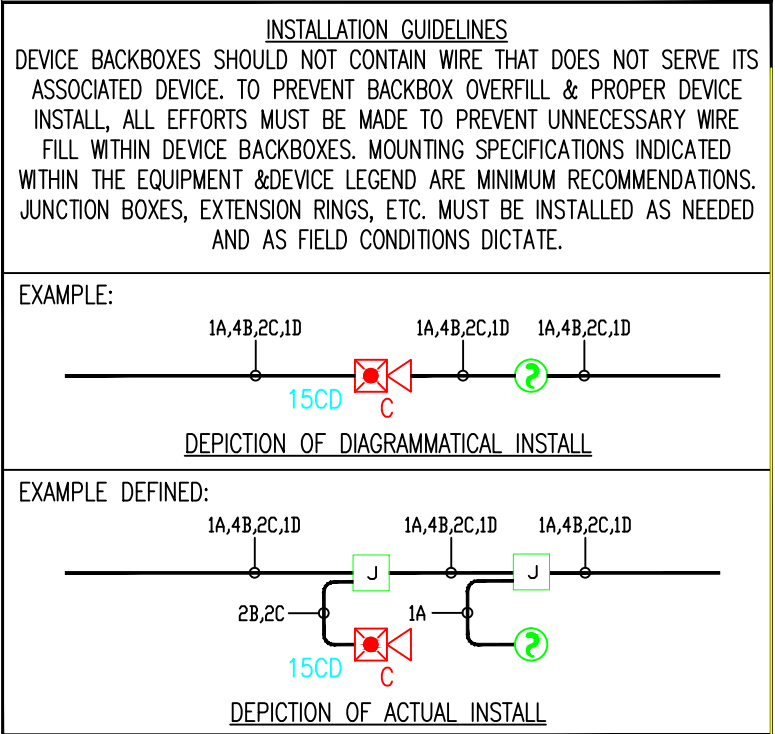
Rev No.	Date	Remarks	Initial
Drawn	H. JEANG		
Checked	-		
Approved	-		
Date	07.30.09		
Scale	0'-1/16" = 1'-0"		

FIRE ALARM FLOORPLAN
PENTHOUSE 1 - COMPOSITE

Job Number: 440P-056306

Project: CHILDRENS HOSPITAL OF ORANGE COUNTY - TOWER II
455 SOUTH MAIN STREET
ORANGE, CALIFORNIA 92668-3874

Drawing Number: EF1.80



4.) AS FIELD CONDITIONS DICTATE ACTUAL RACEWAY INSTALLATIONS, DEVICE BACK BOXES AND JUNCTION BOXES SHALL BE SIZED PER FIELD INSTALLING CONDITIONS. DEVICE BACK BOX SIZES INDICATED WITHIN THIS DRAWING PACKAGE ARE MINIMUM REQUIREMENTS ONLY. AN INCREASE IN BACK BOX DEPTH, ADDITION OF EXTENSION BOX/RING, ETC. MAY BE REQUIRED IN ORDER TO PROPERLY ACCOMMODATE FOR WIRE QUANTITIES INSTALLED WITHIN THE RACEWAY.

3.) THE INSTALLATION OF DEVICE BACKBOXES & WIRE SHALL BE SIZED AND INSTALLED PER CEC. IN ADDITION SUCH BOXES & WIRE SHALL BE INSTALLED IN A MANNER AS TO ALLOW FOR THE EASE OF DEVICE INSTALLATION. THE INSTALLATION OF DEVICES WHICH REQUIRE EXCESSIVE FORCE, THE PINCHING OF WIRES, RESULT IN GROUND FAULTS, ETC. IN ORDER TO PROPERLY SEAT THE DEVICE TO IT'S FINISHED SURFACE SHALL BE CONSIDERED UNACCEPTABLE AND A NON-SIEMENS INSTALLATION STANDARD.

2.) ADDITIONAL JUNCTION BOXES NOT SHOWN WITHIN THESE PLANS MAY BE REQUIRED TO ACCOMMODATE PROPER RACEWAY INSTALLATIONS & SIZING. IT IS THE ELECTRICAL CONTRACTORS RESPONSIBILITY TO DETERMINE THE NECESSARY AMOUNT OF JUNCTION BOXES/EXTENSION RINGS REQUIRED.

1.) ALL RACEWAY RUNS INDICATED WITHIN THIS DRAWING PACKAGE ARE SHOWN DIAGRAMMATICALLY AND ARE FOR CIRCUITING PURPOSES ONLY. ALL RUNS SHOWN SHOULD NOT SERVE IN ANY WAY AS AN ACTUAL ROUTING GUIDE FOR INSTALLATION OF RACEWAYS. EXACT INSTALL LOCATION SHALL BE FIELD DETERMINED.

CHILDRENS HOSPITAL OF
ORANGE COUNTY - TOWER II
455 SOUTH MAIN STREET
ORANGE, CALIFORNIA 92668-3874

	ISSUED FOR PLANCHECK	03/08/11
①	DESIGN REVISION	07/18/11
②	DESIGN REVISION	11/22/11
③	DESIGN REVISION	11/06/12

RECORD
DRAWINGS

THESE DRAWINGS HAVE BEEN PREPARED BY BECC EXCLUSIVELY FOR INSTALLATION BY BECC. BECC ACCEPTS NO LIABILITY FOR CLAIMS BY OTHERS IF BECC IS NOT THE INSTALLER. THESE DRAWINGS ARE INSTRUMENTS OF SERVICE AND ARE THE PROPERTY OF BECC. ALL DESIGNS AND OTHER INFORMATION CONTAINED ON THESE DRAWINGS ARE FOR USE ON THE SPECIFIED PROJECT, INSTALLED ONLY BY BECC, AND SHALL NOT BE REPRODUCED, ALTERED, USED TO OBTAIN PERMITS OR USED TO CONSTRUCT THIS PROJECT WITHOUT THE WRITTEN PERMISSION OF BECC. BECC'S OBTAINING THE EXPRESSED WRITTEN PERMISSION AND CONSENT OF BECC. THESE DRAWINGS SHALL NOT BE ASSIGNED TO A THIRD PARTY WITHOUT WRITTEN PERMISSION AND CONSENT FROM BECC. USE OF THESE DRAWINGS IN ANY SUCH MANNER WITHOUT BECC'S WRITTEN CONSENT SHALL CONSTITUTE TOTAL INDEMNIFICATION OF BECC.



DRAWING DATE:	03/08/11
SCALE:	1/16" = 1'-0"
FILE NAME:	FAXXXX.DWG
DESIGNED BY:	C.S.
PROJECT MANAGER:	KYLE OBERMIRE
CONTACT NUMBER:	(909) 305-1800

SHEET TITLE

**DAMPER MONITORING
SYSTEM
LEVEL 8**

SHEET No.

FA-08.9

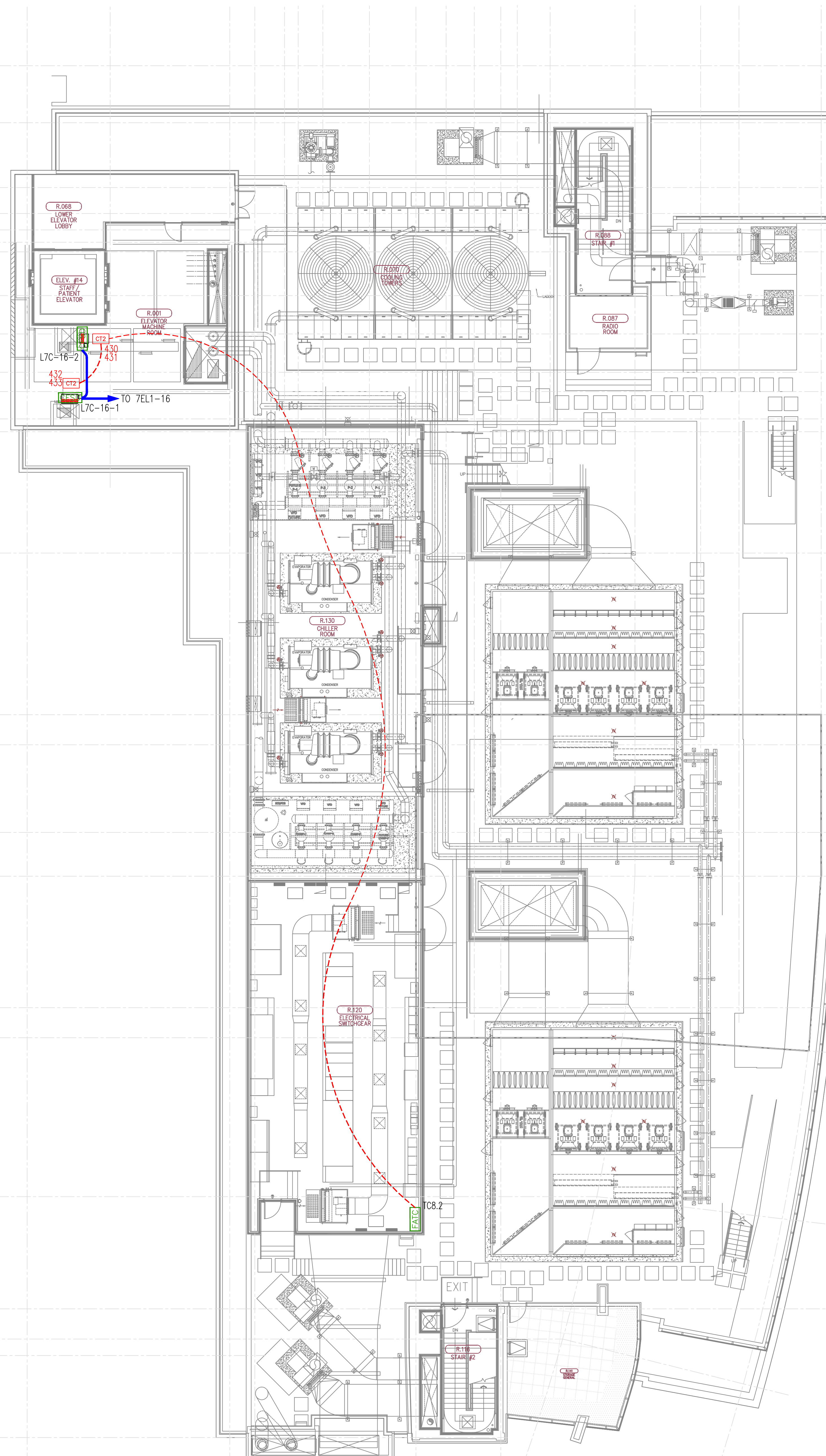
DEVICE LEGEND					
SYMBOL	MODEL	MAKE	DESCRIPTION	CSFM #	MOUNTING
FATC	N/A	BY OTHERS	-FIRE ALARM TERMINAL CABINET	N/A	-INSTALLED BY OTHERS
TPP	SIGA-CT2	BY OTHERS	-DUAL TRANSDUCER EST	7300-1657:121	-4" SQ. BOX WITH SINGLE GANG RING
ESD	N/A	BY OTHERS	-FIRE/SMOKE DAMPER	N/A	
J	N/A	BY OTHERS	-JUNCTION BOX	N/A	

 NEW CONDUIT
 NEW CABLE

LLA-20-1

↑ ↑ ↑ ↑

— DAMPER NUMBER
— ELECTRIC CIRCUIT NUMBER
— SMOKE COMPARTMENT
— LEVEL



SIEMENS

CALIFORNIA STATE CONTRACTORS
LICENSE NO.: #758796 - B/ C10/ C16/ C20

Siemens Building Technologies, Inc.
FIS FIRE/LIFE SAFETY DIVISION
10775 Business Center Drive
Cypress, California 90630 USA
Phone: (714) 761-2200
Fax: (714) 220-4956

This drawing and the information and design application herein contained is the property of SIEMENS BUILDING TECHNOLOGIES, Inc. and is loaned upon the express condition that the same be returned to SIEMENS BUILDING TECHNOLOGIES, Inc. upon request; all information herein contained shall be treated as secret and confidential; no reproduction of this drawing or part thereof shall be made without the written consent of SIEMENS BUILDING TECHNOLOGIES, Incorporated.



BUILDING ELECTRONIC CONTROLS, INC.
2246 Lindsay Way
Glendora, CA 91740
PHONE: (909) 305-1600
FAX #: (909) 305-1604
LICENSE NO.: 729805
CLASSIFICATION (S): C-7 C10
EXPIRATION DATE: 11/30/2012
RICHARD TAYLOR



- NOTES:
- ① INTERFACE TO PATIENT ROOM DOME LIGHT, DOME LIGHT & POWER SHALL BE FURNISHED AND INSTALLED BY OTHERS.
 - ② NOT USED
 - ③ INTERFACE TO VEN DOOR / ROLL-DOWN DOOR / SHUTTER FOR RELEASE. EQUIPMENT & POWER SHALL BE FURNISHED AND INSTALLED BY OTHERS.
 - ④ INTERFACE FOR MONITORING STATUS OF EQUIPMENT.
 - ⑤ SYNCHRONIZING CONFIGURATION OF ALL PAD PANELS.
 - ⑥ GEPY ACTIVATION & MONITORING / GTRI-SD MONITORING FOR PAD PANELS.
 - ⑦ INTERFACE FOR RELEASE OF MAGNETIC DOOR HOLD OPEN DEVICES.
 - ⑧ INTERFACE FOR RELEASE OF COMBINATION SMOKE FIRE DAMPER CIRCUITS (EXCLUDING ISOLATION ROOMS).
 - ⑨ INTERFACE FOR ELEVATOR RECALL (PRIMARY)
 - ⑩ INTERFACE FOR ELEVATOR RECALL (ALT-RECALL)
 - ⑪ INTERFACE FOR ELEVATOR SHUNT TRIP
 - ⑫ INTERFACE FOR ELEVATOR SHUNT TRIP (BATTERY)
 - ⑬ INTERFACE FOR ELEVATOR CAB LIGHT (STEADY)
 - ⑭ INTERFACE FOR ELEVATOR CAB LIGHT (FLASHING)
 - ⑮ INTERFACE FOR RELEASE OF COMBINATION SMOKE FIRE DAMPER CIRCUITS FOR ISOLATION ROOMS ONLY.
 - ⑯ INTERFACE FOR HVAC SHUTDOWN
 - ⑰ INTERFACE FOR MONITORING OF DISCONNECT SWITCH
 - ⑱ MONITOR MODULE TO MONITOR ASPIRATING SMOKE DETECTION PANEL.
-PRE-ALARM
-FIRE 2
-TROUBLE
 - ⑲ CONTROL RELAY (GTRI-SD) IS PROVIDED FOR ASPIRATING SMOKE DETECTION PANEL RESET
 - ⑳ MONITOR MODULES TO MONITOR PREACTION PANEL
-ALARM
-SUPERVISORY
-TROUBLE
 - ㉑ PROVIDE 120V AC, 200 AMP'S DEDICATED CIRCUIT FOR THE POWER SUPPLY
 - ㉒ CONTROL RELAY (GTRI-SD) IS PROVIDED FOR DIMMER CONTROLS ACTIVATION

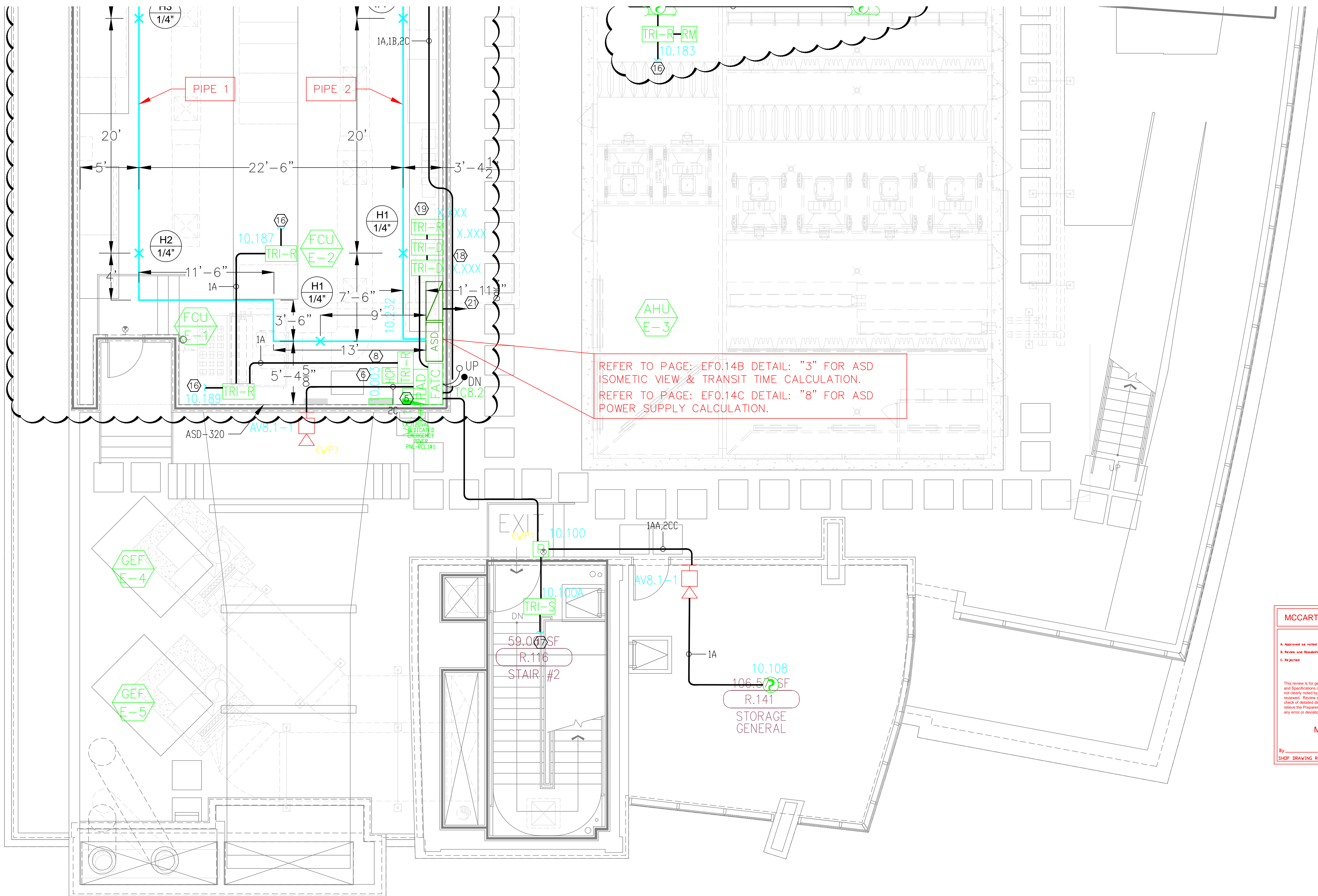
MCCARTHY APPROVAL

A. Approved as noted for architectural Review ☐
B. Review and Rejected ☐
C. Rejected ☐

This review is for general conformance with Plans and Specifications only. Any deviations from same not clearly noted by the Engineer have not been reviewed. Reviewer shall not constitute a complete check of detailed dimensions or notes to verify to release the Engineer of contractual responsibility for any error or deviation from contract requirements.

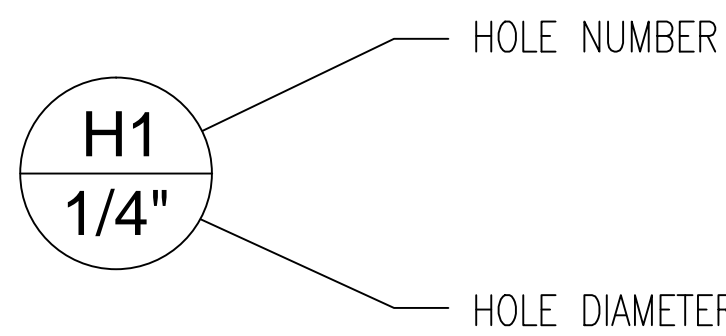
McCarthy

By: _____ Date: _____
CHOP DRAWING REFERENCE NO. _____



REFER TO PAGE: EF0.14B DETAIL: "3" FOR ASD ISOMETRIC VIEW & TRANSIT TIME CALCULATION.
REFER TO PAGE: EF0.14C DETAIL: "8" FOR ASD POWER SUPPLY CALCULATION.

VESDA HOLE LEGEND



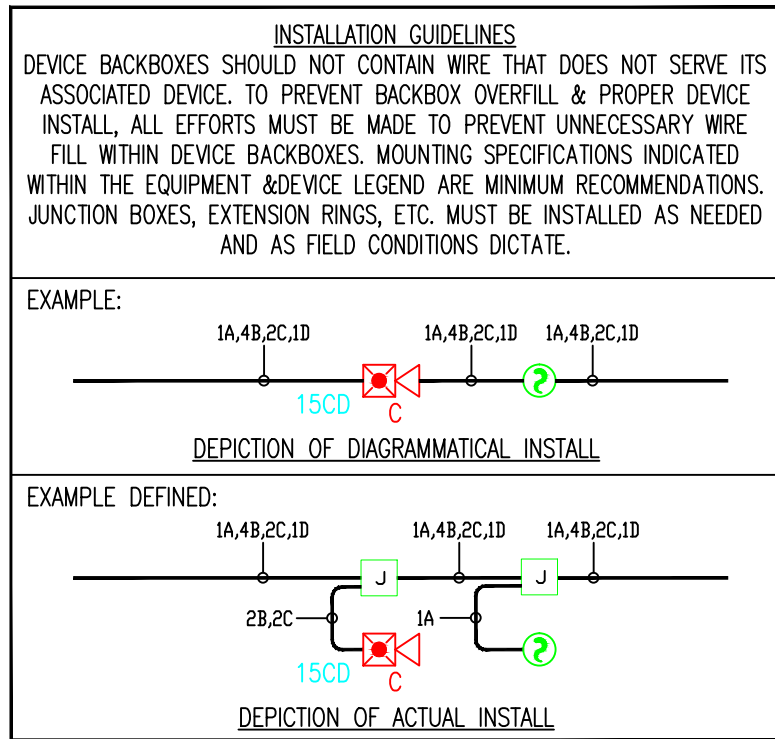
CHAPTER 17 OF NFPA (17.7.3.6.8) STATES THAT THE ASPIRATING AIR PIPE MUST BE LABELED "SMOKE DETECTOR SAMPLING TUBE - DO NOT DISTURB" AS FOLLOWS:
1. AT CHANGES IN DIRECTION OR BRANCHES OF PIPING.
2. AT EACH SIDE OF PENETRATION OF WALLS, FLOORS OR OTHER BARRIERS.
3. AT INTERVALS ON PIPING THAT PROVIDE VISIBILITY WITHIN THE SPACE, BUT NOT GREATER THAN 20 FEET.

4) AS FIELD CONDITIONS DICTATE ACTUAL RACEWAY INSTALLATIONS, DEVICE BACK BOXES AND JUNCTION BOXES SHALL BE SIZED PER FIELD INSTALLING CONDITIONS. DEVICE BACK BOX SIZES INDICATED WITHIN THIS DRAWING PACKAGE ARE MINIMUM REQUIREMENTS ONLY. AN INCREASE IN BACK BOX DEPTH, ADDITION OF EXTENSION BOX/RING, ETC. MAY BE REQUIRED IN ORDER TO PROPERLY ACCOMMODATE FOR WIRE QUANTITIES INSTALLED WITHIN THE RACEWAY.

3) THE INSTALLATION OF DEVICE BACKBOXES & WIRE SHALL BE SIZED AND INSTALLED PER CEC. IN ADDITION SUCH BOXES & WIRE SHALL BE INSTALLED IN A MANNER AS TO ALLOW FOR THE EASE OF DEVICE INSTALLATION. THE INSTALLATION OF DEVICES WHICH REQUIRE EXCESSIVE FORCE, THE PINCHING OF WIRES, RESULT IN GROUND FAULTS, ETC. IN ORDER TO PROPERLY SEAT THE DEVICE TO IT'S FINISHED SURFACE SHALL BE CONSIDERED UNACCEPTABLE AND A NON-SIEMENS INSTALLATION STANDARD.

2) ADDITIONAL JUNCTION BOXES NOT SHOWN WITHIN THESE PLANS MAY BE REQUIRED TO ACCOMMODATE PROPER RACEWAY INSTALLATIONS & SIZING. IT IS THE ELECTRICAL CONTRACTORS RESPONSIBILITY TO DETERMINE THE NECESSARY AMOUNT OF JUNCTION BOXES/EXTENSION RINGS REQUIRED.

1) ALL RACEWAY RUNS INDICATED WITHIN THIS DRAWING PACKAGE ARE SHOWN DIAGRAMMATICALLY AND ARE FOR CIRCUITING PURPOSES ONLY. ALL RUNS SHOWN SHOULD NOT SERVE IN ANY WAY AS AN ACTUAL ROUTING GUIDE FOR INSTALLATION OF RACEWAYS. EXACT INSTALL LOCATION SHALL BE FIELD DETERMINED.



SIEMENS

CALIFORNIA STATE CONTRACTORS
LICENSE NO.: #758796 - B/ C10/ C16/ C20

Siemens Building Technologies, Inc.
FIS FIRE/LIFE SAFETY DIVISION
10775 Business Center Drive
Cypress, California 90630 USA
Phone: (714) 761-2200
Fax: (714) 220-4958

This drawing and the information and design application herein contained is the property of SIEMENS BUILDING TECHNOLOGIES, Inc. and is loaned upon the express condition that the same be returned to SIEMENS BUILDING TECHNOLOGIES, Inc. upon request; all information herein contained shall be treated as secret and confidential; no reproduction of this drawing or part thereof shall be made without the written consent of SIEMENS BUILDING TECHNOLOGIES, Incorporated.



BUILDING ELECTRONIC CONTROLS, INC.
2246 Lindsay Way
Glendora, CA 91740
PHONE: (909) 305-1600
FAX #: (909) 305-1604
LICENSE NO.: 729805
CLASSIFICATION (S): C-7 C10
EXPIRATION DATE: 11/30/2012
RICHARD TAYLOR



- NOTES:
- ① INTERFACE TO PATIENT ROOM DOME LIGHT, DOME LIGHT & POWER SHALL BE FURNISHED AND INSTALLED BY OTHERS.
 - ② NOT USED
 - ③ INTERFACE TO VEN DOOR / ROLL-DOWN DOOR / SHUTTER FOR RELEASE. EQUIPMENT & POWER SHALL BE FURNISHED AND INSTALLED BY OTHERS.
 - ④ INTERFACE FOR MONITORING STATUS OF EQUIPMENT.
 - ⑤ SYNCHRONIZING CONFIGURATION OF ALL PAD PANELS.
 - ⑥ (HPI) ACTIVATION & MONITORING / (HPI-R) MONITORING FOR PAD PANELS.
 - ⑦ INTERFACE FOR RELEASE OF MAGNETIC DOOR HOLD OPEN DEVICES.
 - ⑧ INTERFACE FOR RELEASE OF COMBINATION SMOKE FIRE DAMPER CIRCUITS (EXCLUDING ISOLATION ROOMS).
 - ⑨ INTERFACE FOR ELEVATOR RECALL (PRIMARY)
 - ⑩ INTERFACE FOR ELEVATOR RECALL (ALT-RECALL)
 - ⑪ INTERFACE FOR ELEVATOR SHUNT TRIP
 - ⑫ INTERFACE FOR ELEVATOR SHUNT TRIP (BATTERY)
 - ⑬ INTERFACE FOR ELEVATOR CAB LIGHT (STEADY)
 - ⑭ INTERFACE FOR ELEVATOR CAB LIGHT (FLASHING)
 - ⑮ INTERFACE FOR RELEASE OF COMBINATION SMOKE FIRE DAMPER CIRCUITS FOR ISOLATION ROOMS ONLY.
 - ⑯ INTERFACE FOR HVAC SHUTDOWN
 - ⑰ INTERFACE FOR MONITORING OF DISCONNECT SWITCH
 - ⑱ MONITOR MODULE TO MONITOR ASPIRATING SMOKE DETECTION PANEL.
-PRE-ALARM
-FIRE 2
-FIRE 1
-TROUBLE
⑲ CONTROL RELAY (HTRI-R) IS PROVIDED FOR ASPIRATING SMOKE DETECTION PANEL RESET
 - ⑳ MONITOR MODULES TO MONITOR PREACTION PANEL
-ALARM
-SUPERVISORY
-TROUBLE
㉑ PROVIDE 120V AC, 200 AMPS DEDICATED CIRCUIT FOR THE POWER SUPPLY
 - ㉒ CONTROL RELAY (HTRI-R) IS PROVIDED FOR DIMMER CONTROLS ACTIVATION

MCCARTHY APPROVAL

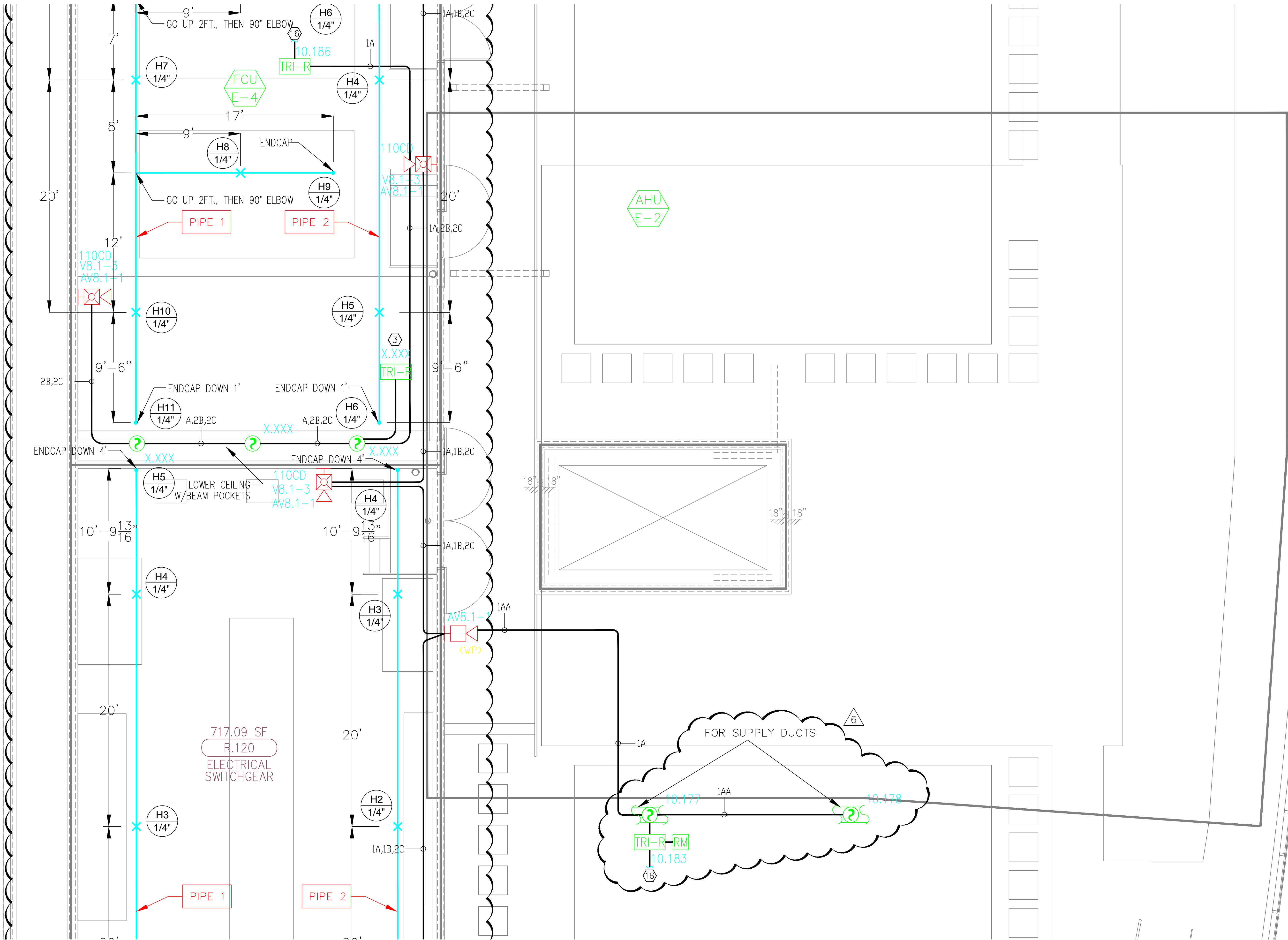
A. Approved as noted for Architectural Review ☐
B. Review and Revisit ☐
C. Reissue ☐

This review is for general conformance with these specifications only. Any deviations from these specifications shall be noted on the drawings. Review shall not constitute a complete check of detailed dimensions or construction to verify the proper of construction responsibility for any error or deviation from contract requirements.

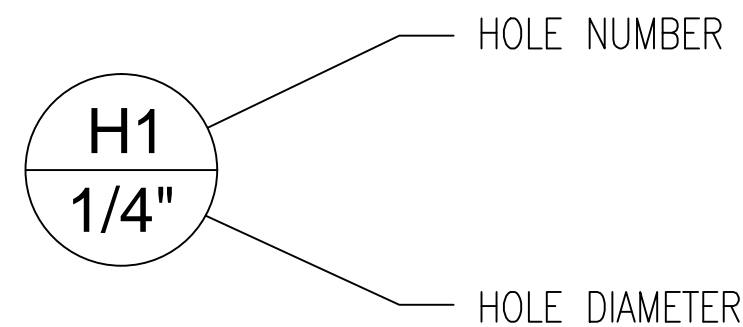
McCarthy

By: _____ In the presence of: _____
Date: _____

100% DRAWING REFERENCE NO. _____

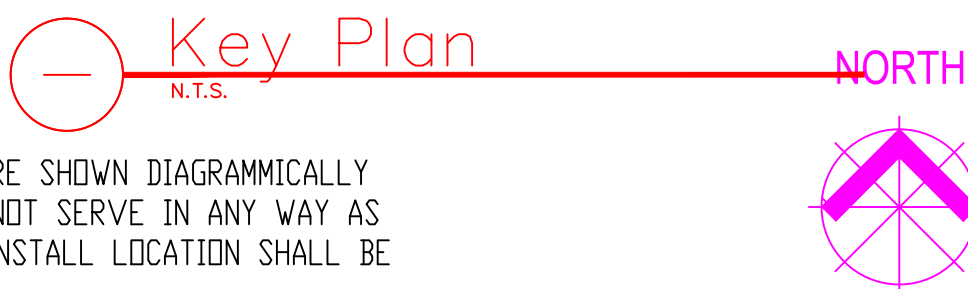
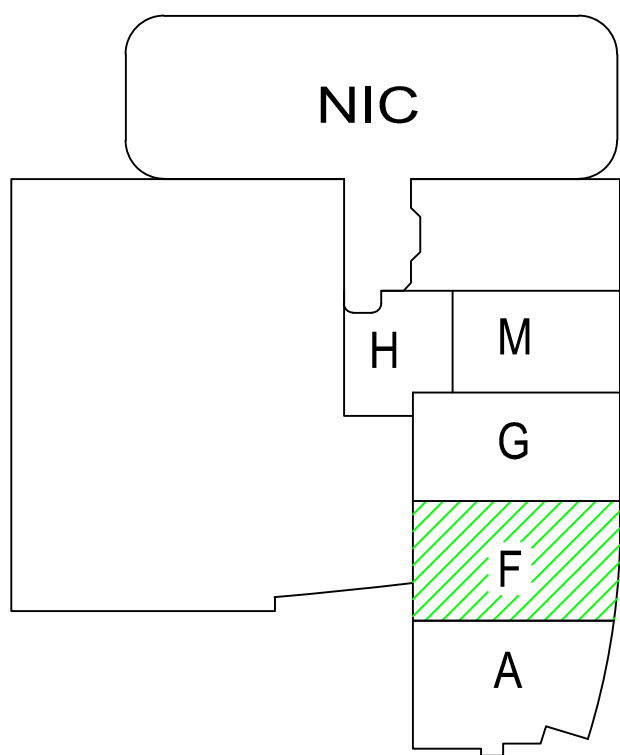
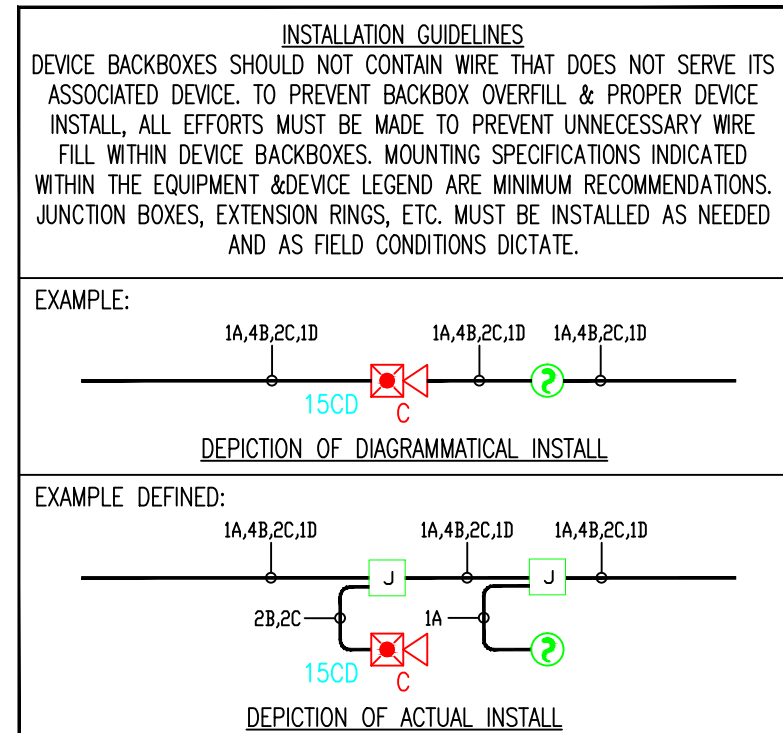


VESDA HOLE LEGEND



CHAPTER 17 OF NFPA (17.7.3.6.8) STATES THAT THE ASPIRATING AIR PIPE MUST BE LABELED "SMOKE DETECTOR SAMPLING TUBE - DO NOT DISTURB" AS FOLLOWS:

1. AT CHANGES IN DIRECTION OR BRANCHES OF PIPING.
2. AT EACH SIDE OF PENETRATION OF WALLS, FLOORS OR OTHER BARRIERS.
3. AT INTERVALS ON PIPING THAT PROVIDE VISIBILITY WITHIN THE SPACE, BUT NOT GREATER THAN 20 FEET.



4.) AS FIELD CONDITIONS DICTATE ACTUAL RACEWAY INSTALLATIONS, DEVICE BACK BOXES AND JUNCTION BOXES SHALL BE SIZED PER FIELD INSTALLING CONDITIONS. DEVICE BACK BOX SIZES INDICATED WITHIN THIS DRAWING PACKAGE ARE MINIMUM REQUIREMENTS ONLY. AN INCREASE IN BACK BOX DEPTH, ADDITION OF EXTENSION BOX/RING, ETC. MAY BE REQUIRED IN ORDER TO PROPERLY ACCOMMODATE FOR WIRE QUANTITIES INSTALLED WITHIN THE RACEWAY.

3.) THE INSTALLATION OF DEVICE BACKBOXES & WIRE SHALL BE SIZED AND INSTALLED PER CEC. IN ADDITION SUCH BOXES & WIRE SHALL BE INSTALLED IN A MANNER AS TO ALLOW FOR THE EASE OF DEVICE INSTALLATION. THE INSTALLATION OF DEVICES WHICH REQUIRE EXCESSIVE FORCE, THE PINCHING OF WIRES, RESULT IN GROUND FAULTS, ETC. IN ORDER TO PROPERLY SEAT THE DEVICE TO IT'S FINISHED SURFACE SHALL BE CONSIDERED UNACCEPTABLE AND A NON-SIEMENS INSTALLATION STANDARD.

2.) ADDITIONAL JUNCTION BOXES NOT SHOWN WITHIN THESE PLANS MAY BE REQUIRED TO ACCOMMODATE PROPER RACEWAY INSTALLATIONS & SIZING. IT IS THE ELECTRICAL CONTRACTORS RESPONSIBILITY TO DETERMINE THE NECESSARY AMOUNT OF JUNCTION BOXES/EXTENSION RINGS REQUIRED.

1.) ALL RACEWAY RUNS INDICATED WITHIN THIS DRAWING PACKAGE ARE SHOWN DIAGRAMMATICALLY AND ARE FOR CIRCUITING PURPOSES ONLY. ALL RUNS SHOWN SHOULD NOT SERVE IN ANY WAY AS AN ACTUAL ROUTING GUIDE FOR INSTALLATION OF RACEWAYS. EXACT INSTALL LOCATION SHALL BE FIELD DETERMINED.

- ☐ MXL ☐ VOICE ☐ XL3 ☐ SYSTEM3
☒ XLS ☐ FS-250 ☐ EST3 ☐ OTHER

OSHPD NO. #: IL-072072-30

Rev No.	Date	Revision	By	Check
1	07/20/12	DESIGN REVISION		
2	11/21/12	DESIGN REVISION		
3	07/21/11	DESIGN REVISION		
4	05/02/11	FULLERTON FIRE DEPARTMENT CORRECTIONS		
5	11/30/10	DESIGN REVISION		
6	07/30/10	DESIGN REVISION		
7	11/05/09	BACKGROUND REVISIONS		

Rev No. Date Remarks Initial

Drawn: H.JEANG

Checked: -

Approved: -

Date: 07.30.09

Scale: 0'-1/4" = 1'-0"

FIRE ALARM FLOORPLAN
PENTHOUSE 1 - AREA F

Job Number: 440P-056306

Project: CHILDRENS HOSPITAL OF
ORANGE COUNTY - TOWER II
455 SOUTH MAIN STREET
ORANGE, CALIFORNIA 92668-3874

Drawing Number: EF3.8F

SIEMENS

CALIFORNIA STATE CONTRACTORS
LICENSE NO.: #758796 - B/ C10/ C16/ C20

Siemens Building Technologies, Inc.
FIS FIRE/LIFE SAFETY DIVISION
10775 Business Center Drive
Cypress, California 90630 USA
Phone: (714) 761-2200
Fax: (714) 220-4958

This drawing and the information and design application herein contained is the property of SIEMENS BUILDING TECHNOLOGIES, Inc. and is loaned upon the express condition that the same be returned to SIEMENS BUILDING TECHNOLOGIES, Inc. upon request; all information herein contained shall be treated as secret and confidential; no reproduction of this drawing or part thereof shall be made without the written consent of SIEMENS BUILDING TECHNOLOGIES, Incorporated.



BUILDING ELECTRONIC CONTROLS, INC.
2246 Lindsay Way
Glendora, CA 91740
PHONE: (909) 305-1600
FAX #: (909) 305-1604
LICENSE NO.: 729805
CLASSIFICATION (S): C-7 C10
EXPIRATION DATE: 11/30/2012
RICHARD TAYLOR



- NOTES:
- ① INTERFACE TO PATIENT ROOM BONE LIGHT, DOME LIGHT & POWER SHALL BE FURNISHED AND INSTALLED BY OTHERS.
 - ② NOT USED
 - ③ INTERFACE TO VEN DOOR / ROLL-DOWN DOOR / SHUTTER FOR RELEASE EQUIPMENT & POWER SHALL BE FURNISHED AND INSTALLED BY OTHERS.
 - ④ INTERFACE FOR MONITORING STATUS OF EQUIPMENT.
 - ⑤ SYNCHRONIZING CONFIGURATION OF ALL PAD PANELS.
 - ⑥ (KEY) ACTIVATION & MONITORING / (HTRI-R) MONITORING FOR PAD PANELS.
 - ⑦ INTERFACE FOR RELEASE OF MAGNETIC DOOR HOLD OPEN DEVICES.
 - ⑧ INTERFACE FOR RELEASE OF COMBINATION SMOKE FIRE DAMPER CIRCUITS (EXCLUDING ISOLATION ROOMS).
 - ⑨ INTERFACE FOR ELEVATOR RECALL (PRIMARY)
 - ⑩ INTERFACE FOR ELEVATOR RECALL (ALT-RECALL)
 - ⑪ INTERFACE FOR ELEVATOR SHUNT TRIP
 - ⑫ INTERFACE FOR ELEVATOR SHUNT TRIP (BATTERY)
 - ⑬ INTERFACE FOR ELEVATOR CAB LIGHT (STEADY)
 - ⑭ INTERFACE FOR ELEVATOR CAB LIGHT (FLASHING)
 - ⑮ INTERFACE FOR RELEASE OF COMBINATION SMOKE FIRE DAMPER CIRCUITS FOR ISOLATION ROOMS ONLY.
 - ⑯ INTERFACE FOR HVAC SHUTDOWN
 - ⑰ INTERFACE FOR MONITORING OF DISCONNECT SWITCH
 - ⑱ MONITOR MODULE TO MONITOR ASPIRATING SMOKE DETECTION PANEL.
-FIRE 2
-FIRE 1
-TROUBLE
 - ⑲ CONTROL RELAY (HTRI-R) IS PROVIDED FOR ASPIRATING SMOKE DETECTION PANEL RESET
 - ⑳ MONITOR MODULES TO MONITOR PREACTION PANEL
-ALARM
-SUPERVISORY
-TROUBLE
 - ㉑ PROVIDE 120V AC, 20 AMP DEDICATED CIRCUIT FOR THE POWER SUPPLY
 - ㉒ CONTROL RELAY (HTRI-R) IS PROVIDED FOR DIMMER CONTROLS ACTIVATION

MCCARTHY APPROVAL

- A. Approved as noted for Architectural Review ☐
B. Approved as noted for Mechanical Review ☐
C. Approved ☐

This review is for general conformance with Plans and Specifications only. Any deviations from same not clearly noted by the Engineer have not been reviewed. Review that not constitute a complete check of detailed dimensions or detail to ensure the review of general conformance with requirements for any error or deviation from contract requirements.

McCarthy

By: Date:
SHIP DRAWING REFERENCE NO.

- ☐ MXL ☐ VOICE ☐ XL3 ☐ SYSTEM3
☒ XLS ☐ FS-250 ☐ EST3 ☐ OTHER

OSHPD NO. #: IL-072072-30

Rev No.	Date	Remarks	Initial
1	07/20/12	DESIGN REVISION	
2	11/21/11	DESIGN REVISION	
3	07/21/11	DESIGN REVISION	
4	05/02/11	FULLERTON FIRE DEPARTMENT CORRECTIONS	
5	11/30/10	DISPATCH CENTER	LF
6	07/30/10	DISPATCH CENTER	LF
7	11/05/09	BACKGROUND REVISIONS	FM

Rev No. Date Remarks Initial

Drawn: H.JEANG

Checked: -

Approved: -

Date: 07.30.09

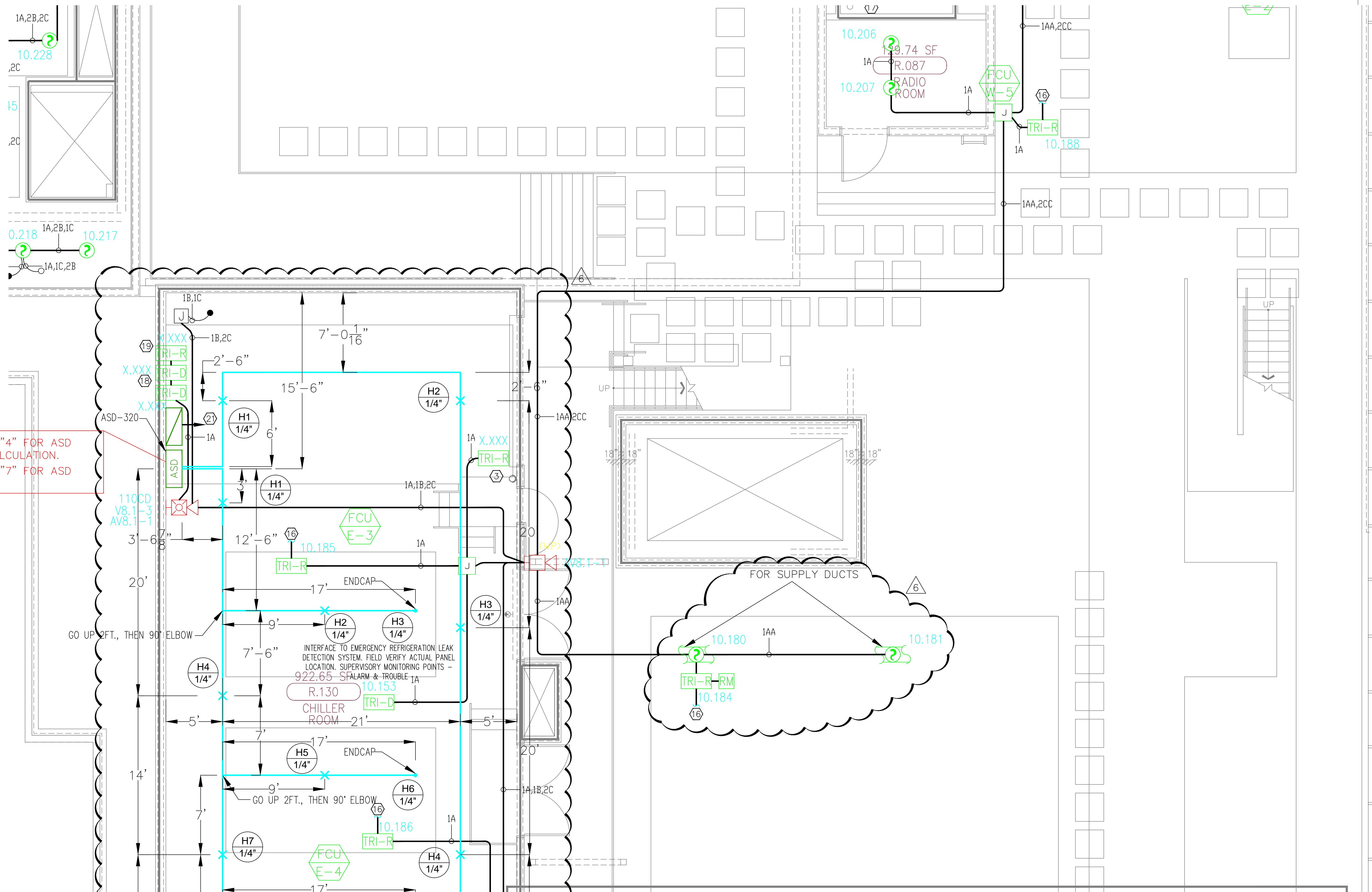
Scale: 0'-1/4" = 1'-0"

FIRE ALARM FLOORPLAN
PENTHOUSE 1 - AREA G

Job Number: 440P-056306

Project: CHILDRENS HOSPITAL OF
ORANGE COUNTY - TOWER II
455 SOUTH MAIN STREET
ORANGE, CALIFORNIA 92668-3874

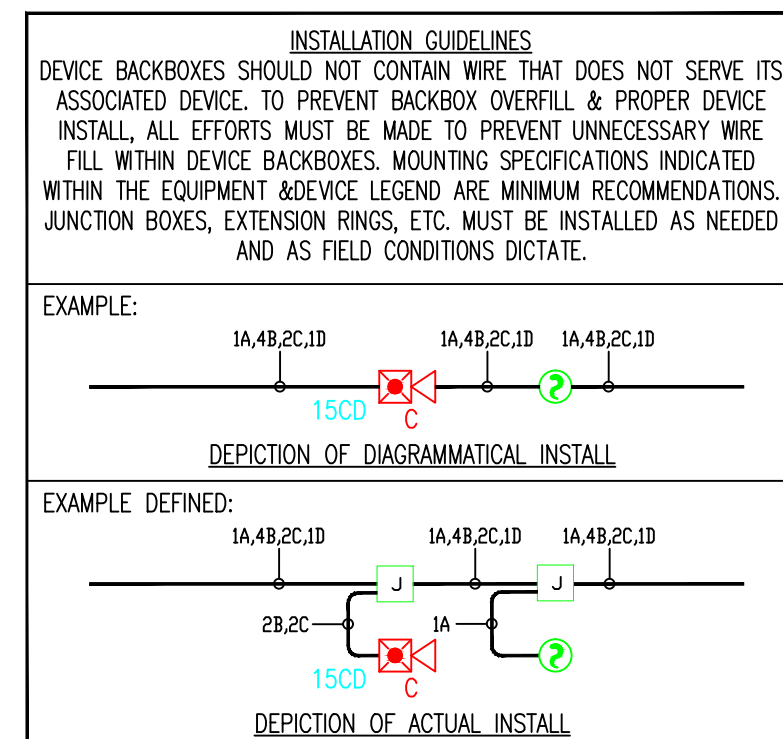
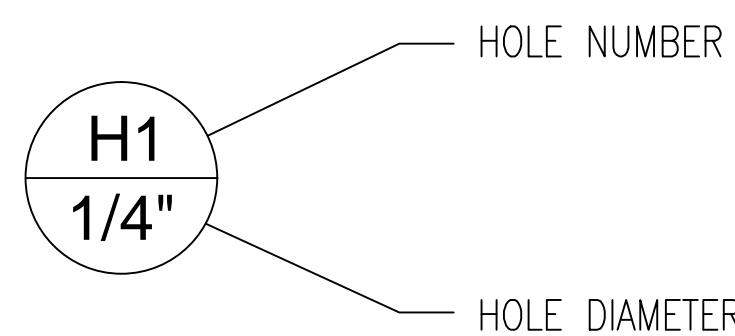
Drawing Number: EF3.8G



REFER TO PAGE: EF0.14C DETAIL: "4" FOR ASD ISOMETRIC VIEW & TRANSIT TIME CALCULATION.
REFER TO PAGE: EF0.14C DETAIL: "7" FOR ASD POWER SUPPLY CALCULATION.

CHAPTER 17 OF NFPA (17.7.3.6.8) STATES THAT THE ASPIRATING AIR PIPE MUST BE LABELED "SMOKE DETECTOR SAMPLING TUBE - DO NOT DISTURB" AS FOLLOWS:
1. AT CHANGES IN DIRECTION OR BRANCHES OF PIPING.
2. AT EACH SIDE OF PENETRATION OF WALLS, FLOORS OR OTHER BARRIERS.
3. AT INTERVALS ON PIPING THAT PROVIDE VISIBILITY WITHIN THE SPACE, BUT NOT GREATER THAN 20 FEET.

VESDA HOLE LEGEND



Key Plan
N.T.S.



4.) AS FIELD CONDITIONS DICTATE ACTUAL RACEWAY INSTALLATIONS, DEVICE BACK BOXES AND JUNCTION BOXES SHALL BE SIZED PER FIELD INSTALLING CONDITIONS. DEVICE BACK BOX SIZES INDICATED WITHIN THIS DRAWING PACKAGE ARE MINIMUM REQUIREMENTS ONLY. AN INCREASE IN BACK BOX DEPTH, ADDITION OF EXTENSION BOX/RING, ETC. MAY BE REQUIRED IN ORDER TO PROPERLY ACCOMMODATE FOR WIRE QUANTITIES INSTALLED WITHIN THE RACEWAY.

3.) THE INSTALLATION OF DEVICE BACKBOXES & WIRE SHALL BE SIZED AND INSTALLED PER CEC. IN ADDITION SUCH BOXES & WIRE SHALL BE INSTALLED IN A MANNER AS TO ALLOW FOR THE EASE OF DEVICE INSTALLATION. THE INSTALLATION OF DEVICES WHICH REQUIRE EXCESSIVE FORCE, THE PINCHING OF WIRES, RESULT IN GROUND FAULTS, ETC. IN ORDER TO PROPERLY SEAT THE DEVICE TO IT'S FINISHED SURFACE SHALL BE CONSIDERED UNACCEPTABLE AND A NON-SIEMENS INSTALLATION STANDARD.

2.) ADDITIONAL JUNCTION BOXES NOT SHOWN WITHIN THESE PLANS MAY BE REQUIRED TO ACCOMMODATE PROPER RACEWAY INSTALLATIONS & SIZING. IT IS THE ELECTRICAL CONTRACTORS RESPONSIBILITY TO DETERMINE THE NECESSARY AMOUNT OF JUNCTION BOXES/EXTENSION RINGS REQUIRED.

1.) ALL RACEWAY RUNS INDICATED WITHIN THIS DRAWING PACKAGE ARE SHOWN DIAGRAMMATICALLY AND ARE FOR CIRCUITING PURPOSES ONLY. ALL RUNS SHOWN SHOULD NOT SERVE IN ANY WAY AS AN ACTUAL ROUTING GUIDE FOR INSTALLATION OF RACEWAYS. EXACT INSTALL LOCATION SHALL BE FIELD DETERMINED.

4.) THE INSTALLATION OF DEVICE BACKBOXES & WIRE SHALL BE SIZED AND INSTALLED PER CEC. IN ADDITION SUCH BOXES & WIRE SHALL BE INSTALLED IN A MANNER AS TO ALLOW FOR THE EASE OF DEVICE INSTALLATION. THE INSTALLATION OF DEVICES WHICH REQUIRE EXCESSIVE FORCE, THE PINCHING OF WIRES, RESULT IN GROUND FAULTS, ETC. IN ORDER TO PROPERLY SEAT THE DEVICE TO IT'S FINISHED SURFACE SHALL BE CONSIDERED UNACCEPTABLE AND A NON-SIEMENS INSTALLATION STANDARD.



SIEMENS

CALIFORNIA STATE CONTRACTORS
LICENSE NO.: #758796 - B/ C10/ C16/ C20

Siemens Building Technologies, Inc.
FIS FIRE/LIFE SAFETY DIVISION
10775 Business Center Drive
Cypress, California 90630 USA
Phone: (714) 761-2200
Fax: (714) 220-4956

This drawing and the information and design application herein contained is the property of SIEMENS BUILDING TECHNOLOGIES, Inc. and is loaned upon the express condition that the same be returned to SIEMENS BUILDING TECHNOLOGIES, Inc. upon request; all information herein contained shall be treated as secret and confidential; no reproduction of this drawing or part thereof shall be made without the written consent of SIEMENS BUILDING TECHNOLOGIES, Incorporated.



BUILDING ELECTRONIC CONTROLS, INC.
2246 Lindsay Way
Glendora, CA 91740
PHONE: (909) 305-1600
FAX #: (909) 305-1604
LICENSE NO.: 729805
CLASSIFICATION (S): C-7 C10
EXPIRATION DATE: 11/30/2012
RICHARD TAYLOR



- NOTES:
- ① INTERFACE TO PATIENT ROOM BONE LIGHT, BONE LIGHT & POWER SHALL BE FURNISHED AND INSTALLED BY OTHERS.
 - ② NOT USED
 - ③ INTERFACE TO VEN DOOR / ROLL-DOWN DOOR / SHUTTER FOR RELEASE EQUIPMENT & POWER SHALL BE FURNISHED AND INSTALLED BY OTHERS.
 - ④ INTERFACE FOR MONITORING STATUS OF EQUIPMENT.
 - ⑤ SYNCHRONIZING CONFIGURATION OF ALL PAD PANELS.
 - ⑥ GEPY ACTIVATION & MONITORING / GTRI-S MONITORING FOR PAD PANELS.
 - ⑦ INTERFACE FOR RELEASE OF MAGNETIC DOOR HOLD OPEN DEVICES.
 - ⑧ INTERFACE FOR RELEASE OF COMBINATION SMOKE FIRE DAMPER CIRCUITS (EXCLUDING ISOLATION ROOMS).
 - ⑨ INTERFACE FOR ELEVATOR RECALL (PRIMARY)
 - ⑩ INTERFACE FOR ELEVATOR RECALL (ALT-RECALL)
 - ⑪ INTERFACE FOR ELEVATOR SHUNT TRIP
 - ⑫ INTERFACE FOR ELEVATOR SHUNT TRIP (BATTERY)
 - ⑬ INTERFACE FOR ELEVATOR CAB LIGHT (STEADY)
 - ⑭ INTERFACE FOR ELEVATOR CAB LIGHT (FLASHING)
 - ⑮ INTERFACE FOR RELEASE OF COMBINATION SMOKE FIRE DAMPER CIRCUITS FOR ISOLATION ROOMS ONLY.
 - ⑯ INTERFACE FOR HVAC SHUTDOWN
 - ⑰ INTERFACE FOR MONITORING OF DISCONNECT SWITCH
 - ⑱ MONITOR MODULE TO MONITOR ASPIRATING SMOKE DETECTION PANEL.
-FIRE 2
-FIRE 1
-TROUBLE
 - ⑲ CONTROL RELAY (GTRI-R) IS PROVIDED FOR ASPIRATING SMOKE DETECTION PANEL RESET
 - ⑳ MONITOR MODULES TO MONITOR PREACTION PANEL
-ALARM
-SUPERVISORY
-TROUBLE
 - ㉑ PROVIDE 120V AC, 200 AMP'S DEDICATED CIRCUIT FOR THE POWER SUPPLY
 - ㉒ CONTROL RELAY (GTRI-R) IS PROVIDED FOR DIMMER CONTROLS ACTIVATION

- ☐ MXL ☐ VOICE ☐ XL3 ☐ SYSTEM3
☒ XLS ☐ FS-250 ☐ EST3 ☐ OTHER

OSHPD NO. #: IL-072072-30

Δ	07/20/12	DESIGN REVISION	-
Δ	11/21/11	DESIGN REVISION	-
Δ	07/21/11	DESIGN REVISION	-
Δ	05/02/11	FULLERTON FIRE DEPARTMENT CORRECTIONS	-
Δ	11/30/10	DISPATCH CENTER	LF
Δ	07/30/10	WSPR BACKLOG REVISION	LF
Δ	11/05/09	BACKGROUND REVISIONS	FM

Rev No. Date Remarks Initial

Drawn: H.JEANG

Checked: -

Approved: -

Date: 07.30.09

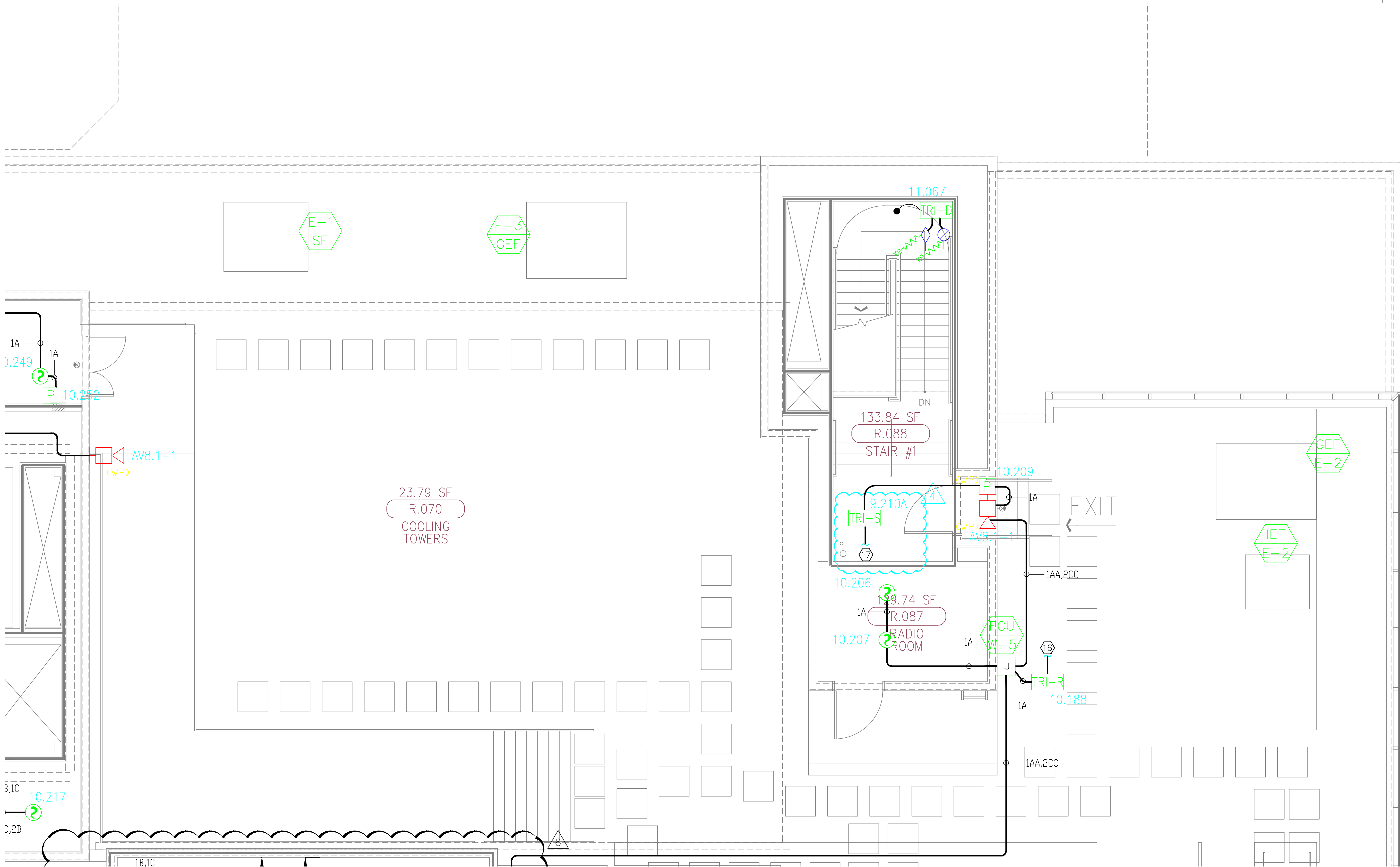
Scale: 0'-1/4" = 1'-0"

FIRE ALARM FLOORPLAN
PENTHOUSE 1 - AREA M

Job Number: 440P-056306

Project: CHILDRENS HOSPITAL OF
ORANGE COUNTY - TOWER II
455 SOUTH MAIN STREET
ORANGE, CALIFORNIA 92668-3874

Drawing Number: EF3.8M



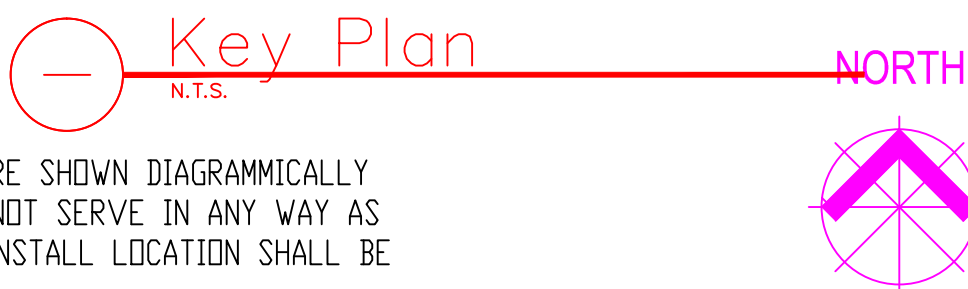
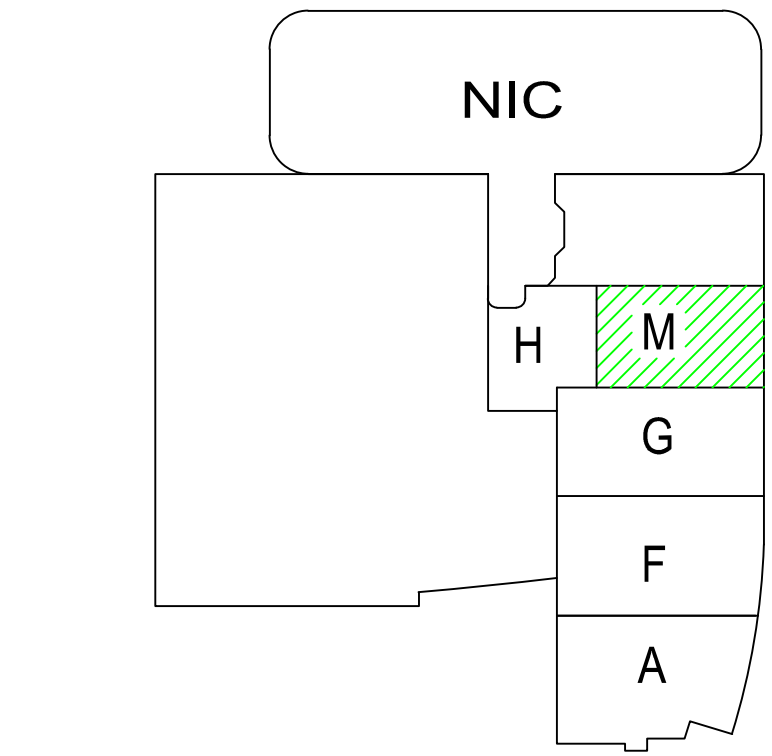
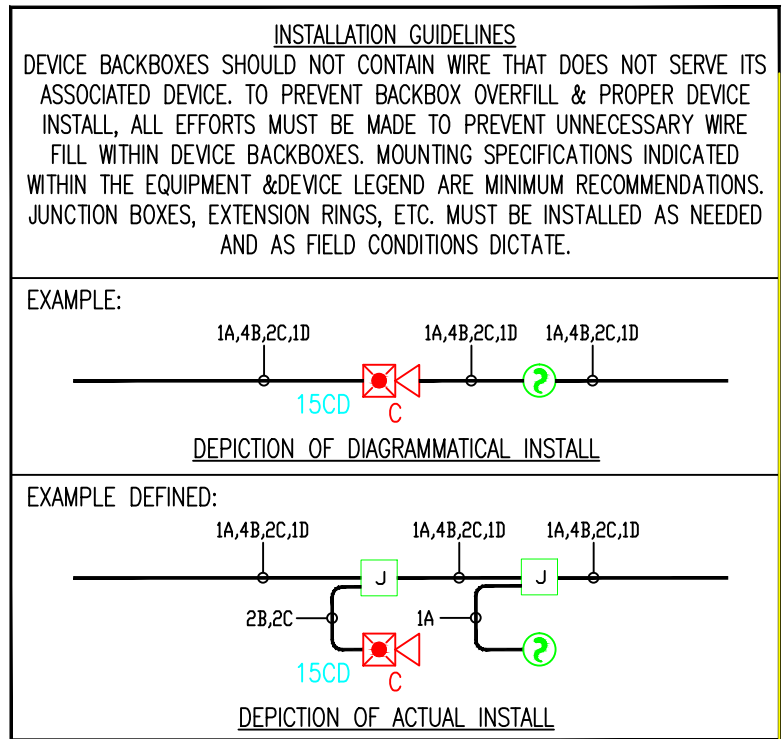
MCCARTHY APPROVAL

A. Approved as noted for Architectural Review ☐
B. Review and Re-submit ☐
C. Rejected ☐

This review is for general conformance with Plans and Specifications only. Any deviations from same not clearly noted by the Approver hereon shall not be construed as approval. Review shall not constitute a complete check of original dimensions or shall be held to release the Approver of contractual responsibility for any error or deviation from contract requirements.

McCarthy

By: _____ Date: _____
SHEP. DRAWING REFERENCE NO.



4.) AS FIELD CONDITIONS DICTATE ACTUAL RACEWAY INSTALLATIONS, DEVICE BACK BOXES AND JUNCTION BOXES SHALL BE SIZED PER FIELD INSTALLING CONDITIONS. DEVICE BACK BOX SIZES INDICATED WITHIN THIS DRAWING PACKAGE ARE MINIMUM REQUIREMENTS ONLY. AN INCREASE IN BACK BOX DEPTH, ADDITION OF EXTENSION BOX/RING, ETC. MAY BE REQUIRED IN ORDER TO PROPERLY ACCOMMODATE FOR WIRE QUANTITIES INSTALLED WITHIN THE RACEWAY.

3.) THE INSTALLATION OF DEVICE BACKBOXES & WIRE SHALL BE SIZED AND INSTALLED PER CEC. IN ADDITION SUCH BOXES & WIRE SHALL BE INSTALLED IN A MANNER AS TO ALLOW FOR THE EASE OF DEVICE INSTALLATION. THE INSTALLATION OF DEVICES WHICH REQUIRE EXCESSIVE FORCE, THE PINCHING OF WIRES, RESULT IN GROUND FAULTS, ETC. IN ORDER TO PROPERLY SEAT THE DEVICE TO IT'S FINISHED SURFACE SHALL BE CONSIDERED UNACCEPTABLE AND A NON-SIEMENS INSTALLATION STANDARD.

2.) ADDITIONAL JUNCTION BOXES NOT SHOWN WITHIN THESE PLANS MAY BE REQUIRED TO ACCOMMODATE PROPER RACEWAY INSTALLATIONS & SIZING. IT IS THE ELECTRICAL CONTRACTORS RESPONSIBILITY TO DETERMINE THE NECESSARY AMOUNT OF JUNCTION BOXES/EXTENSION RINGS REQUIRED.

1.) ALL RACEWAY RUNS INDICATED WITHIN THIS DRAWING PACKAGE ARE SHOWN DIAGRAMMATICALLY AND ARE FOR CIRCUITING PURPOSES ONLY. ALL RUNS SHOWN SHOULD NOT SERVE IN ANY WAY AS AN ACTUAL ROUTING GUIDE FOR INSTALLATION OF RACEWAYS. EXACT INSTALL LOCATION SHALL BE FIELD DETERMINED.