



6696 Route 405 Highway, Muncy PA 17756
(800) 233-8493 • Fax (570) 546-8022 • www.c-sgroup.com

LOCATION:	ORANGE, CA	SECTION:	05800	C/S JOB NO:	740483
CUSTOMER:	VNSM	ARCHITECT:	FKP ARCHITECTS	REPRESENTATIVE:	I.M.C.
DRAWN BY:	R HORN	DATE:	04/27/10	PAGES:	20

If you have any questions on these shop drawings or our submittal package, please call me at 570-546-5941. Upon receipt of approved shop drawings, for ship dates and customer service questions, call XXXX at the following number. C/S Muncy 570-546-5941.

17	17TH PARTIAL RELEASE 6.13.12
16	16TH PARTIAL RELEASE 6.11.12
13	13TH PARTIAL RELEASE 4.18.12
10	10TH PARTIAL RELEASE 3.13.12
9	9TH PARTIAL RELEASE 2.08.12
8	8TH PARTIAL RELEASE 1.09.12
2	2ND PARTIAL RELEASE 10.27.11
1	1ST PARTIAL RELEASE 10.21.11

CONSTRUCTION SPECIALTIES, INC. IS NOT RESPONSIBLE FOR FIELD VERIFICATIONS. ALL FIELD VERIFICATIONS SHOULD BE DONE PRIOR TO RETURNING APPROVED SHOP DRAWINGS. CONSTRUCTION SPECIALTIES, INC. WILL RELEASE MATERIAL AND QUANTITIES SHOWN ON APPROVED/APPROVED AS NOTED SHOP DRAWINGS.

[illegible]

The diagram contains three technical drawings of cover details:

- FLOOR COVER:** A rectangular detail showing a cross-section. The top surface is labeled 'REFERENCE NO. 001'. A vertical line indicates the 'SECTION' line. The bottom surface is labeled 'LENGTH' with a dimension of '0'-6"'. A small 'x' is marked on the top surface.
- WALL COVER:** A rectangular detail showing a cross-section. The top surface is labeled 'REFERENCE NO. 001'. A vertical line indicates the 'SECTION' line. The bottom surface is labeled 'LENGTH' with a dimension of '0'-5"'. A small 'x' is marked on the top surface.
- CEILING COVER:** A circular detail showing a cross-section. The top surface is labeled 'REFERENCE NO. 001'. A vertical line indicates the 'SECTION' line. The bottom surface is labeled 'LENGTH' with a dimension of '0'-6"'. A small 'x' is marked on the top surface.

REVISIONS			
NO.	DESCRIPTION	DATE	BY

FILE AND FIELD			
NO.	DESCRIPTION	DATE	BY
10	10TH PARTIAL RELEASE	3.28.12	RH

GENERAL NOTES

E.J.C. SYMBOL

REFERENCE NO. 001 SECTION X LENGTH 0'-0"

FLOOR COVER

REFERENCE NO. 001 SECTION X LENGTH 0'-0"

WALL COVER

REFERENCE NO. 001 SECTION X LENGTH 0'-0"

CEILING COVER

REFERENCE NO. 001 SECTION XX LENGTH 1 UNIT QTY

TRANSITION DETAIL

EXPANSION JOINT _____
COVER DESIGNATION: _____

The information shown reflects the scope of work of our agreement and understanding of the materials and application required for the project. In order to avoid misrepresentation, please advise of any errors or omissions at this approval stage. Our interpretation of approval, regardless of language to the contrary, is as follows:

"REVISED" or "APPROVED" signifies that the information shown herein fully complies with the contract documents. (RESUBMIT FOR RECORD, FABRICATION MAY PROCEED AS DETAILED HEREIN)

"REVISED AS NOTED" or "APPROVED AS NOTED" signifies that the information shown herein fully complies with the contract documents, provided that the Architect's notes are incorporated in their entirety into these drawings. (REVISE AND RESUBMIT FOR RECORD, FABRICATION MAY PROCEED PER REVISED DRAWINGS)

If drawings are stamped and noted in any other fashion than stated above, fabrication may not begin until Architect approves that the work shown herein fully complies with the contract documents. (RESUBMITTAL REQUIRED)

THESE DRAWINGS COVER WORK INCLUDED IN OUR C/S CONTRACT AND DO NOT ENTER OR ACCEPT RESPONSIBILITY FOR DIMENSIONS AFFECTING THE WORK OF OTHER CONTRACTORS.

THE DETAILS OF SURROUNDING CONDITIONS RELATED TO OUR WORK, BUT NOT FURNISHED BY C/S, HAVE BEEN SHOWN ON OUR DRAWINGS IN ACCORDANCE WITH OUR INTERPRETATION OF ARCHITECTURAL DRAWINGS OR OTHER INFORMATION FURNISHED TO C/S COMBINED WITH OUR CONTRACT REQUIREMENTS.

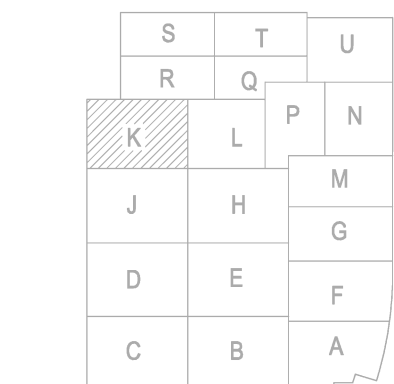
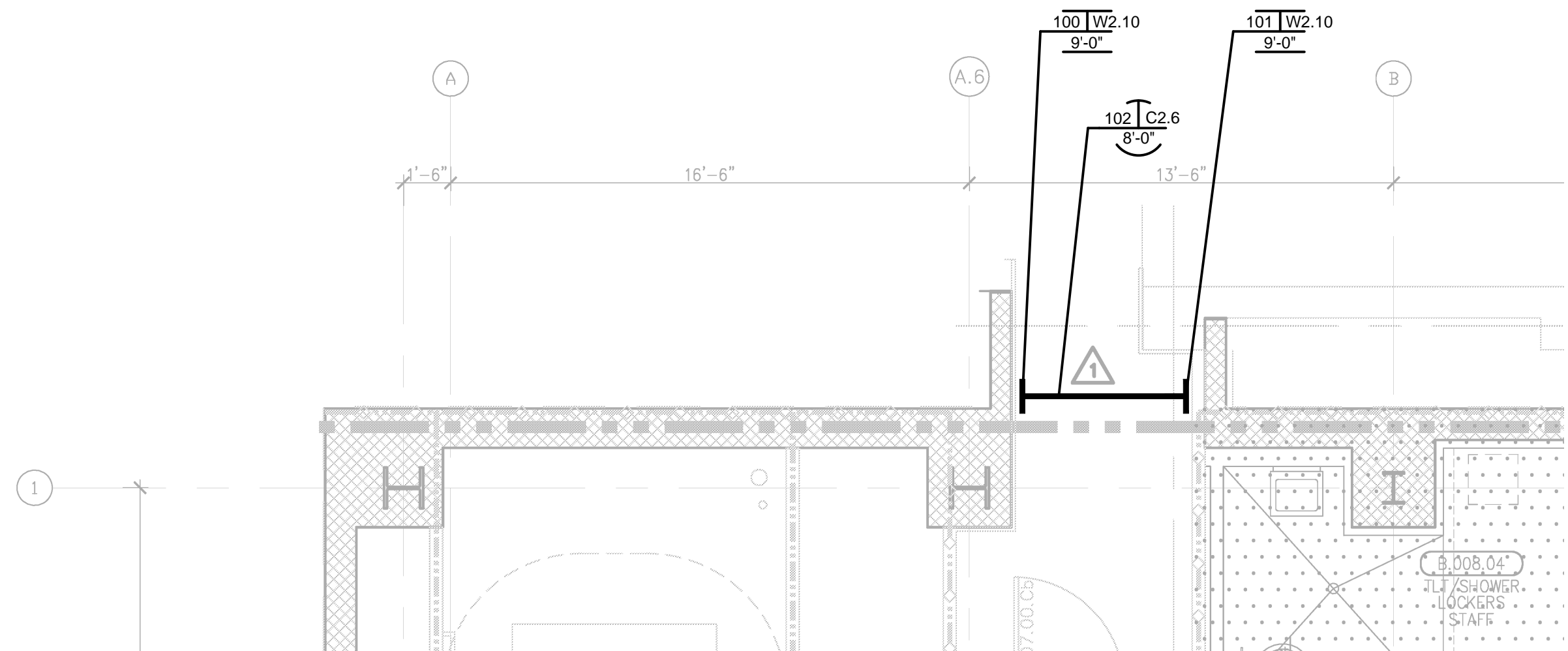
TO ASSURE THE PROPER INSTALLATION OF MATERIALS, OUR SHOP DRAWINGS MUST BE CHECKED AND COORDINATED BY THE CONTRACTOR AND/OR ARCHITECT AGAINST DRAWINGS PROVIDED BY SUPPLIERS OF THOSE MATERIALS.

Construction Specialties™
8006 Rouse 405 Highway, Murry, PA 17788
800) 233-8400 • Fax (717) 546-8022 • www.csigroup.com

This document is the property of Construction Specialties, Inc. and contains confidential proprietary information that is not to be disclosed to third parties and is not to be used without approval in writing from Construction Specialties, Inc.

PROJECT:	CHILDREN'S HOSP TOWER 2
JOB NO.:	740483
CUSTOMER:	VNSM
REPRESENTATIVE:	IMC
DRAWN BY:	RH
SCALE:	1/4" = 1'-0"
DATE:	4/27/10
SHEET NO.:	L.O.1

LEGEND			
MARK_#	SECTION	QTY	SHEET
100	W2.10	9'-0"	D1.5
101	W2.10	9'-0"	D1.5
102	C2.6	8'-0"	D2.2
103	W2.10	9'-0"	D1.5
104	C2.6	8'-0"	D2.2
105	W2.10	9'-0"	D1.5
106	W2.10	9'-0"	D1.5
107	C2.6	8'-0"	D2.2
108	W2.10	9'-0"	D1.5

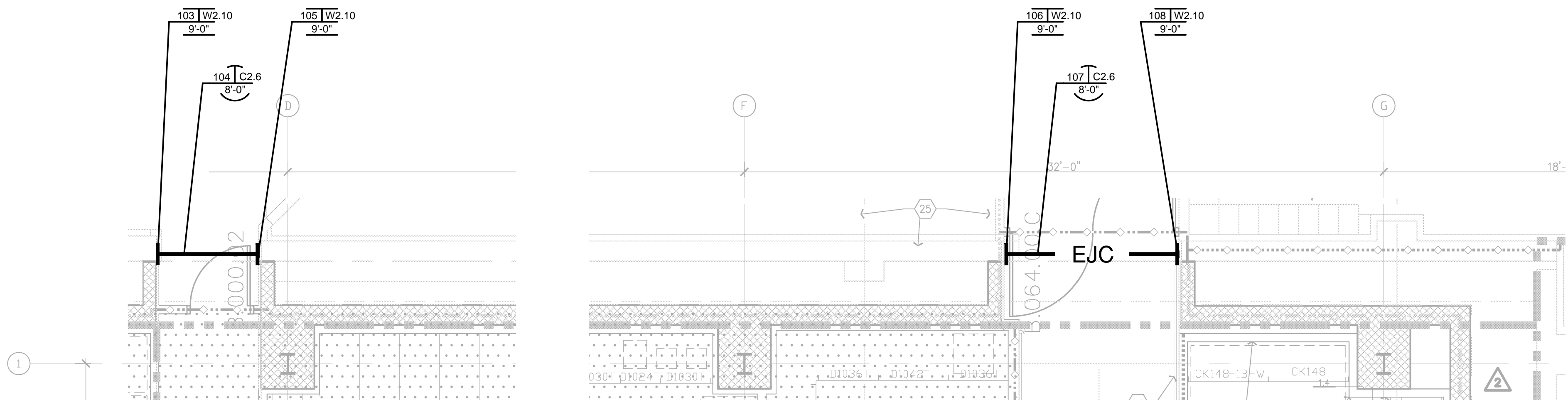


(A1) KEY PLAN

MATERIAL PER C/S PCO 37
39 RFI'S 4954-1 AND 5238.

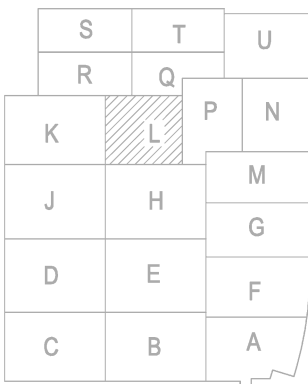
1 FLOOR PLAN LOWER LEVEL AREA N

REF. ARCH. SHEET A6/A3.0K

$$1/4'' = 1'-0''$$


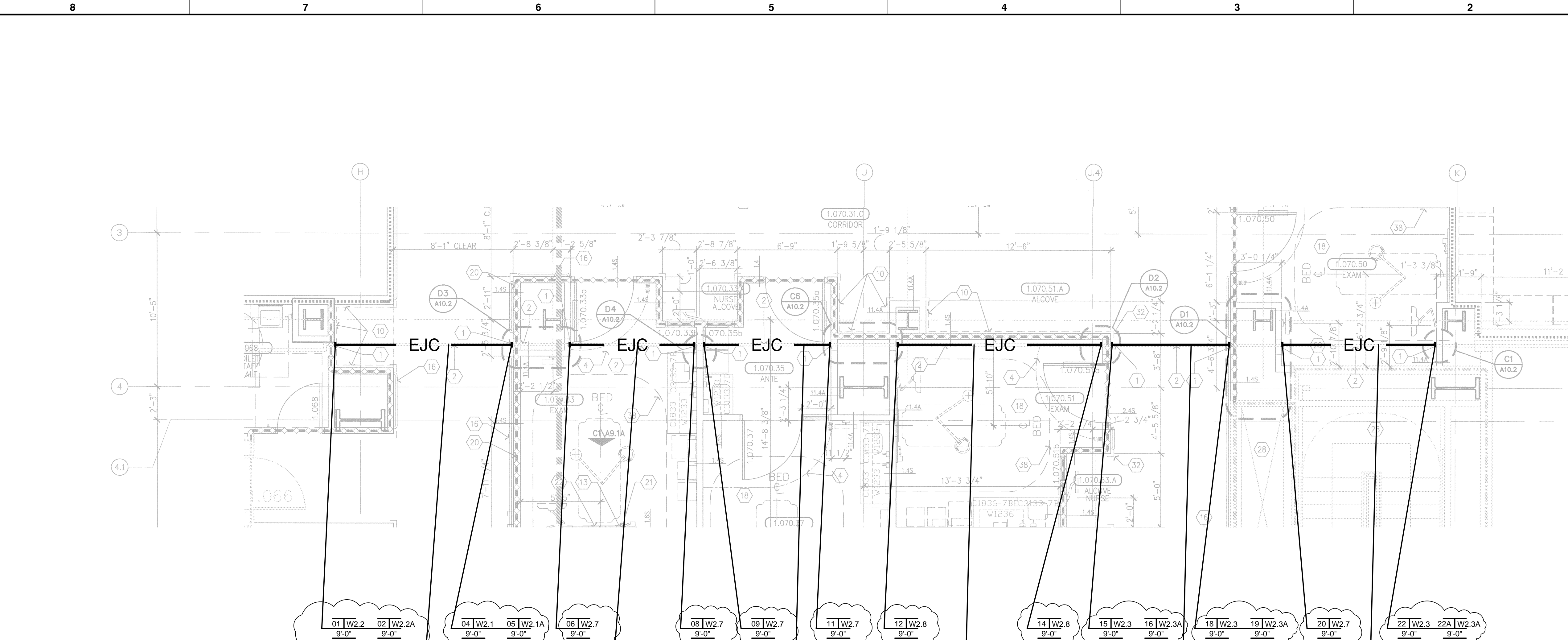
1 FLOOR PLAN LOWER LEVEL AREA L

REF. ARCH. SHEET A6/A3.0L

$$1/4'' = 1'-0''$$


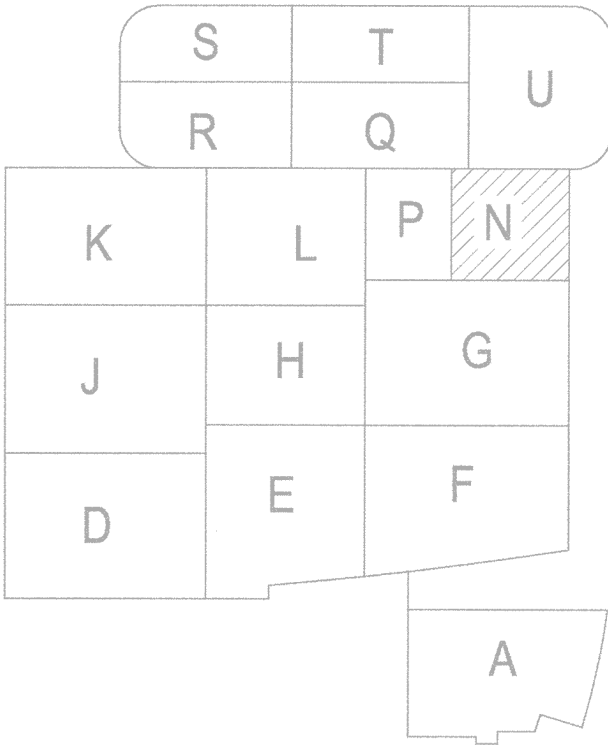
A1 KEY PLAN

INCREMENT #7



LEGEND			
MARK_#	QTY	SECTION	SHEET
22A	9'-0"	W2.3A	D1.2
01	9'-0"	W2.2	D1.1
02	9'-0"	W2.2A	D1.1
03	8'-4"	C2.4	D2.2
04	9'-0"	W2.1	D1.1
05	9'-0"	W2.1A	D1.1
06	9'-0"	W2.7	D1.4
07	9'-0"	C2.4	D2.2
08	9'-0"	W2.7	D1.4
09	9'-0"	W2.7	D1.4
10	8'-8"	C2.4	D2.2
11	9'-0"	W2.7	D1.4
12	9'-0"	W2.8	D1.5
13	12'-2"	C2.5	D2.2
14	9'-0"	W2.8	D1.5
15	9'-0"	W2.3	D1.2
16	9'-0"	W2.3A	D1.2
17	8'-2"	C2.4	D2.2
18	9'-0"	W2.3	D1.2
19	9'-0"	W2.3A	D1.2
20	9'-0"	W2.7	D1.4
21	10'-9"	C2.4	D2.2
22	9'-0"	W2.3	D1.2

1 FLOOR PLAN LEVEL 1 AREA N
REF. ARCH. SHEET A6/A3.1N & A6/A4.1D
1/4" = 1'-0"



INCREMENT #7

A1 KEY PLAN

REVISIONS

NO.	DESCRIPTION	DATE	BY
-	-	-	-
-	-	-	-
-	-	-	-

FILE AND FIELD

NO.	DESCRIPTION	DATE	BY
1	1ST PARTIAL RELEASE	10.21.11	RH
2	2nd PARTIAL RELEASE	0.27.11	RH

GENERAL NOTES

E.J.C. SYMBOL

REFERENCE NO. SECTION

001 X

0'-0" LENGTH

REFERENCE NO. SECTION

001 X

0'-0" LENGTH

FLOOR COVER

REFERENCE NO. SECTION

001 X

0'-0" LENGTH

WALL COVER

REFERENCE NO. SECTION

001 XX

1 UNIT QTY

CEILING COVER

REFERENCE NO. SECTION

001 X

0'-0" LENGTH

TRANSITION DETAIL

REFERENCE NO. SECTION

001 XX

1 UNIT QTY

EXPANSION JOINT

COVER DESIGNATION:

The information shown reflects the scope of work of our agreement and understanding of the materials and application required for the project. In order to avoid misinterpretation, please advise of any errors or omissions at this approval stage. Our interpretation of approval, regardless of language to the contrary, is as follows:

"REVIEWED" or "APPROVED" signifies that the information shown herein fully complies with the contract documents. (RESUBMIT FOR RECORD, FABRICATION MAY PROCEED AS DETAILED HEREIN)

"REVIEWED AS NOTED" or "APPROVED AS NOTED" signifies that the information shown herein fully complies with the contract documents, provided that the Architect's notes are incorporated in their entirety into these drawings. (REVISE AND RESUBMIT FOR RECORD, FABRICATION MAY PROCEED PER REVISED DRAWINGS)

If drawings are stamped and/or noted in any other fashion than stated above, fabrication may not begin until Architect approves that the work shown herein fully complies with the contract documents. (RESUBMITTAL REQUIRED)

THESE DRAWINGS COVER WORK INCLUDED IN C/S CONTRACT AND DO NOT INFER OR ACCEPT RESPONSIBILITY FOR DIMENSIONS AFFECTING THE WORK OF OTHER CONTRACTORS.

THE DETAILS OF SURROUNDING CONDITIONS RELATED TO OUR WORK, BUT NOT FURNISHED BY C/S, HAVE BEEN SHOWN ON OUR DRAWINGS IN ACCORDANCE WITH OUR INTERPRETATION OF ARCHITECTURAL DRAWINGS OR OTHER INFORMATION FURNISHED TO C/S, COMBINED WITH OUR CONTRACT REQUIREMENTS.

TO ASSURE THE PROPER INSTALLATION OF C/S MATERIALS IN ACCORDANCE WITH SURROUNDING MATERIALS, OUR SHOP DRAWINGS MUST BE CHECKED AND COORDINATED BY THE CONTRACTOR (AND/OR ARCHITECT) AGAINST DRAWINGS PROVIDED BY SUPPLIERS OF THOSE MATERIALS.

Construction Specialties™

6565 Route 422 Highway, Murry, PA 17755

(800) 233-8493 • Fax (570) 545-8022 • www.c-sgroup.com

This document is the property of Construction Specialties, Inc. and contains confidential proprietary information that is not to be disclosed to third parties and is not to be used without approval in writing from Construction Specialties, Inc.

PROJECT: CHILDREN'S HOSP TOWER 2

JOB NO.: 740483

CUSTOMER: VNMS

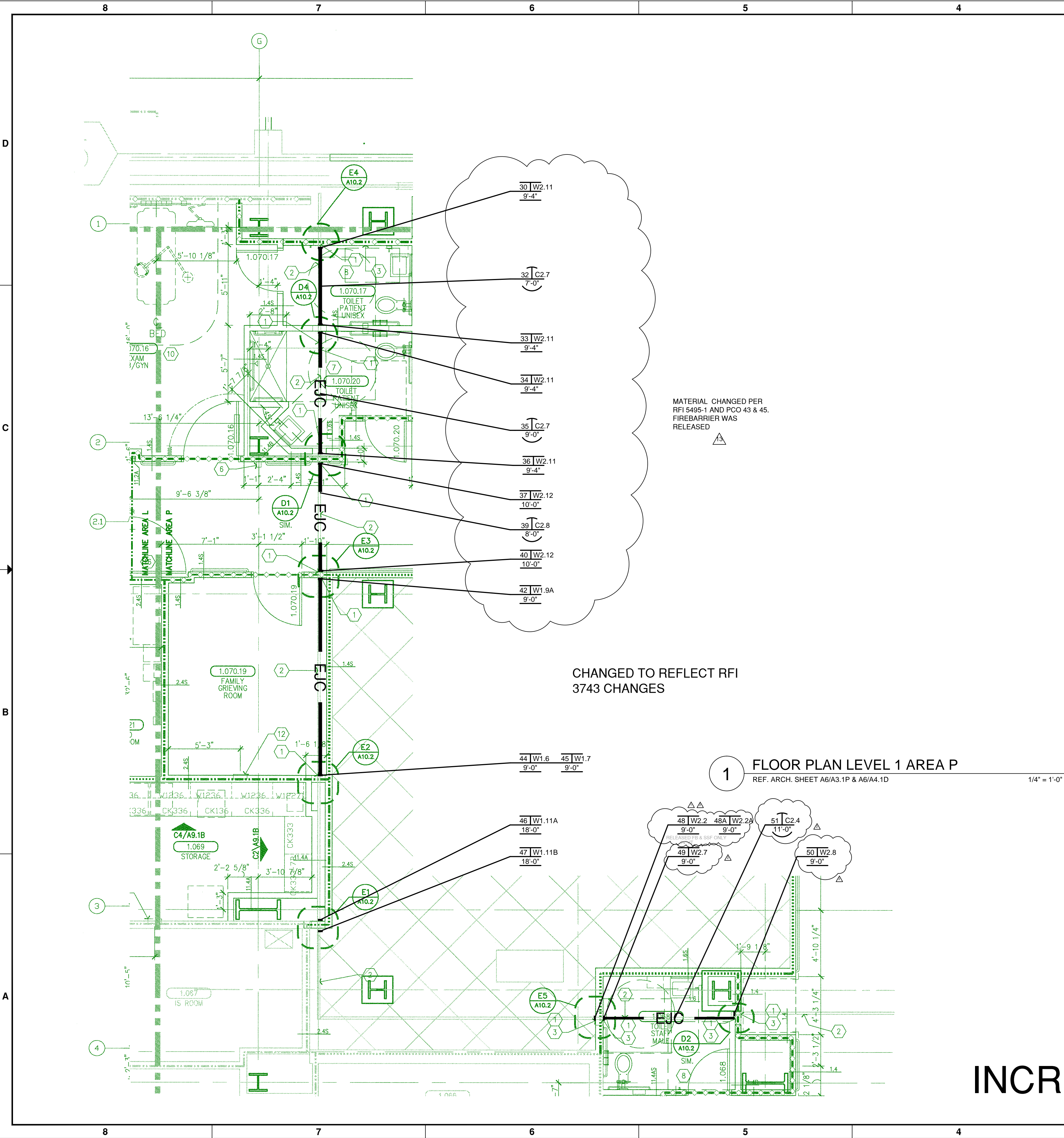
REPRESENTATIVE: IMC

DRAWN BY: RH

SCALE: 1/4" = 1'-0"

DATE: 4/27/10

SHEET NO: L1.1



LEGEND			
MARK_#	SECTI ON	QTY	SHEET
48A	W2.2A	9'-0"	D1.1
30	W2.11	9'-4"	D1.6
32	C2.7	7'-0"	D2.2
33	W2.11	9'-4"	D1.6
34	W2.11	9'-4"	D1.6
35	C2.7	9'-0"	D2.2
36	W2.11	9'-4"	D1.6
37	W2.12	10'-0"	D1.6
39	C2.8	8'-0"	D2.3
40	W2.12	10'-0"	D1.6
42	W1.9A	9'-0"	D1.3
44	W1.6	9'-0"	D1.2
45	W1.7	9'-0"	D1.2
46	W1.11 A	18'-0"	D1.4
47	W1.11 B	18'-0"	D1.4
48	W2.2	9'-0"	D1.1
49	W2.7	9'-0"	D1.4
50	W2.8	9'-0"	D1.5
51	C2.4	11'-0"	D2.2

REVISIONS

NO.	DESCRIPTION	DATE	BY
-	-	-	-
-	-	-	-
-	-	-	-

FILE AND FIELD

NO.	DESCRIPTION	DATE	BY
1	1ST PARTIAL RELEASE	0.21.11	RH
2	2nd PARTIAL RELEASE	0.27.11	RH
13	13TH PARTIAL	4.18.12	RH
16	16TH PARTIAL	6.11.12	RH

GENERAL NOTES

The information shown reflects the scope of work of our agreement and understanding of the materials and application required for the project. In order to avoid misinterpretation, please advise of any errors or omissions at this approval stage. Our interpretation of approval, regardless of language to the contrary, is as follows:

"REVIEWED" or "APPROVED" signifies that the information shown herein fully complies with the contract documents. (RESUBMIT FOR RECORD, FABRICATION MAY PROCEED AS DETAILED HEREIN)

"REVIEWED AS NOTED" or "APPROVED AS NOTED" signifies that the information shown herein fully complies with the contract documents, provided that the Architect's notes are incorporated in their entirety into these drawings. (REVISE AND RESUBMIT FOR RECORD, FABRICATION MAY PROCEED PER REVISED DRAWINGS)

If drawings are stamped and/or rolled in any other fashion than stated above, fabrication may not begin until Architect approves that the work shown herein fully complies with the contract documents. (RESUBMITTAL REQUIRED)

THESE DRAWINGS COVER WORK INCLUDED IN C/S CONTRACT AND DO NOT INFER OR ACCEPT RESPONSIBILITY FOR DIMENSIONS AFFECTING THE WORK OF OTHER CONTRACTORS.

THE DETAILS OF SURROUNDING CONDITIONS RELATED TO OUR WORK, BUT NOT FURNISHED BY C/S, HAVE BEEN SHOWN ON OUR DRAWINGS IN ACCORDANCE WITH OUR INTERPRETATION OF ARCHITECTURAL DRAWINGS OR OTHER INFORMATION FURNISHED TO C/S, COMBINED WITH OUR CONTRACT REQUIREMENTS.

TO ASSURE THE PROPER INSTALLATION OF C/S MATERIALS IN ACCORDANCE WITH SURROUNDING MATERIALS, OUR SHOP DRAWINGS MUST BE CHECKED AND COORDINATED BY THE CONTRACTOR (AND/OR ARCHITECT) AGAINST DRAWINGS PROVIDED BY SUPPLIERS OF THOSE MATERIALS.

Construction Specialties™

6500 Route 402 Highway, Murry, PA 17755
(800) 233-8493 • Fax: (570) 545-8022 • www.csgroup.com

This document is the property of Construction Specialties, Inc. and contains confidential proprietary information that is not to be disclosed to third parties and is not to be used without approval in writing from Construction Specialties, Inc.

PROJECT:

CHILDREN'S HOSP TOWER 2

JOB NO.:

740483

CUSTOMER:

VNSM

REPRESENTATIVE:

IMC

DRAWN BY:

RH

SCALE:

1/4" = 1'-0"

DATE:

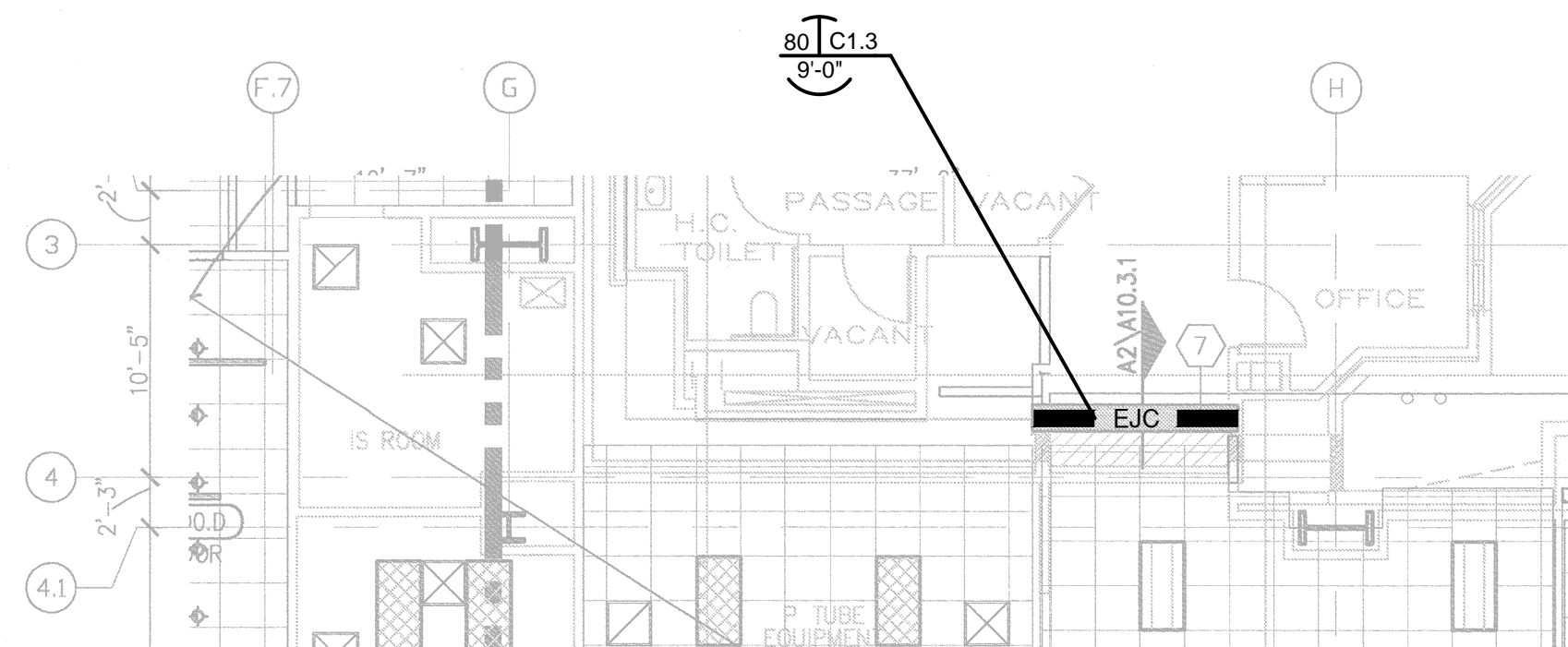
4/27/10

SHEET NO.:

L1.2

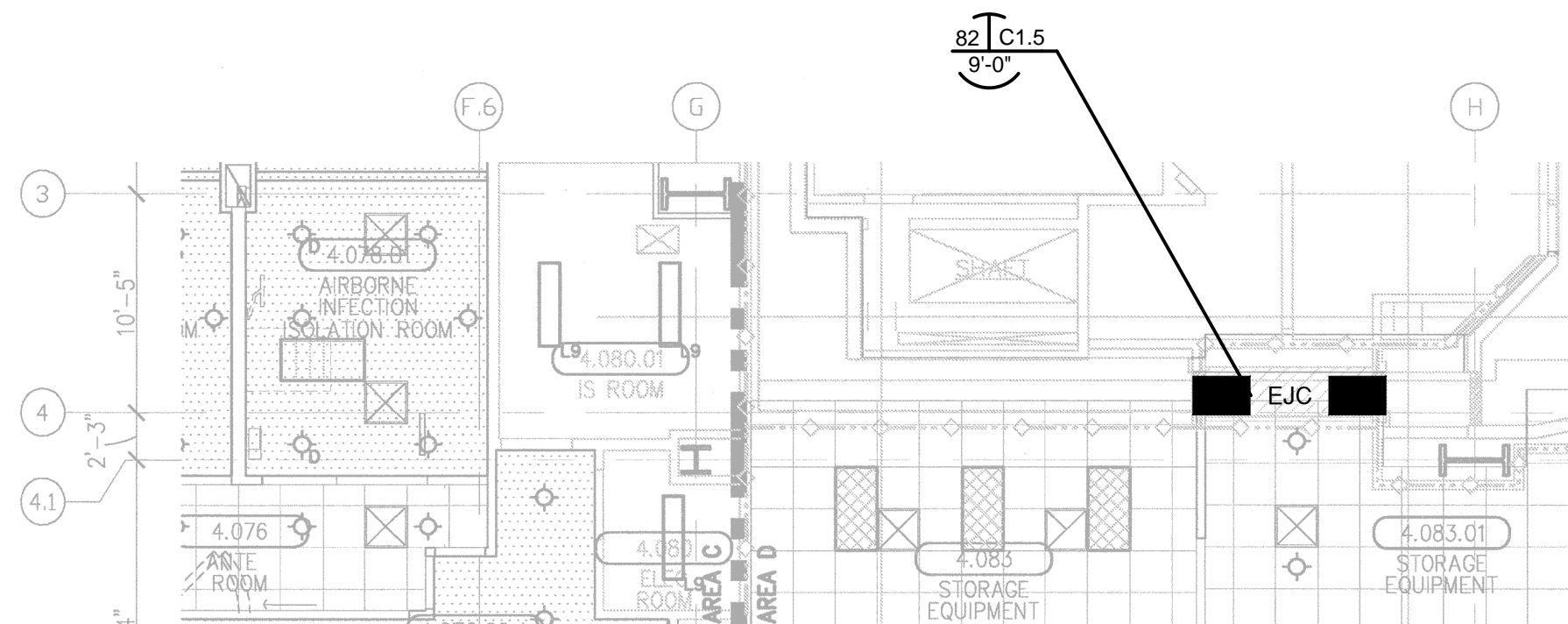
INCREMENT #7

A1 KEY PLAN



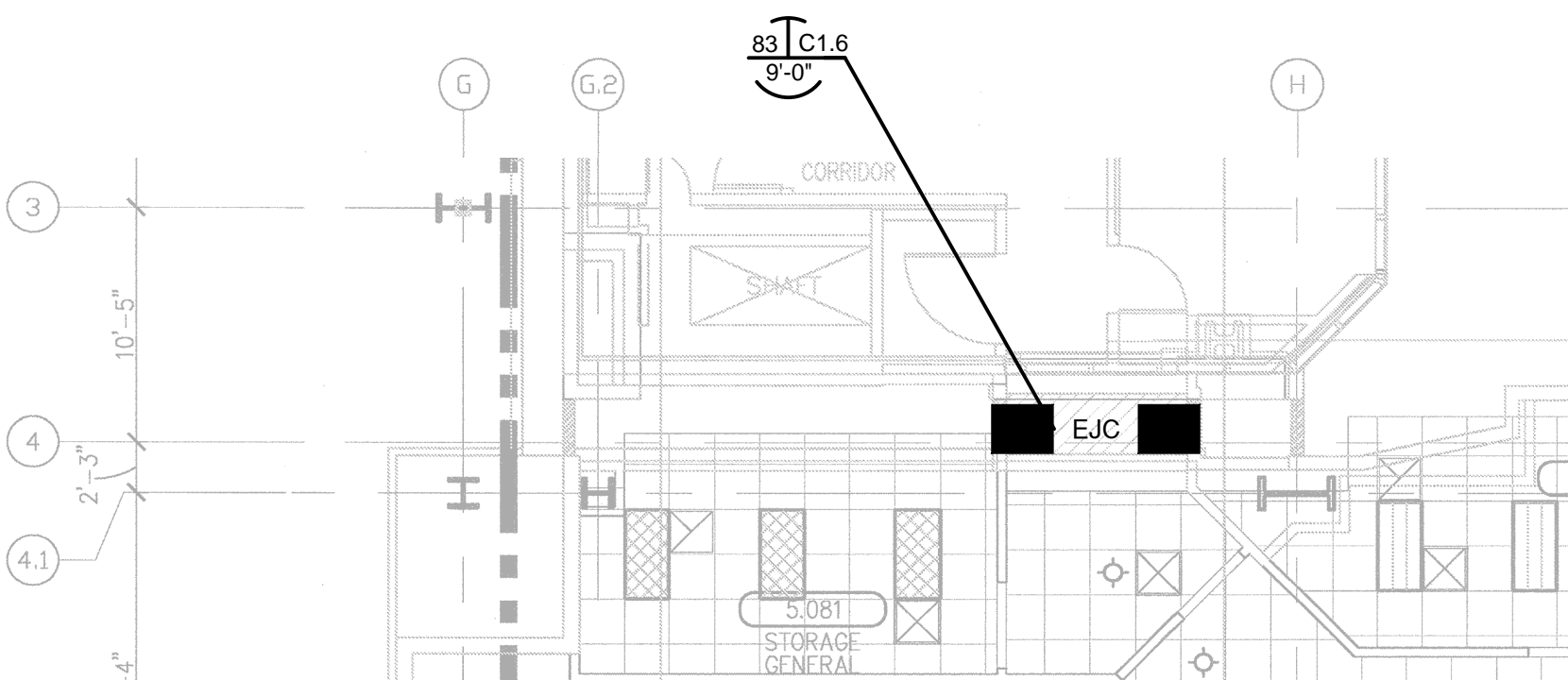
1 LEVEL 2 REFLECTED CEILING PLAN AREA D REF. ARCH. SHEET A4.2D 1/8" = 1'-0"

2 LEVEL 3 REFLECTED CEILING PLAN AREA D
REF. ARCH. SHEET A4.3D 1/8" = 1'-0"



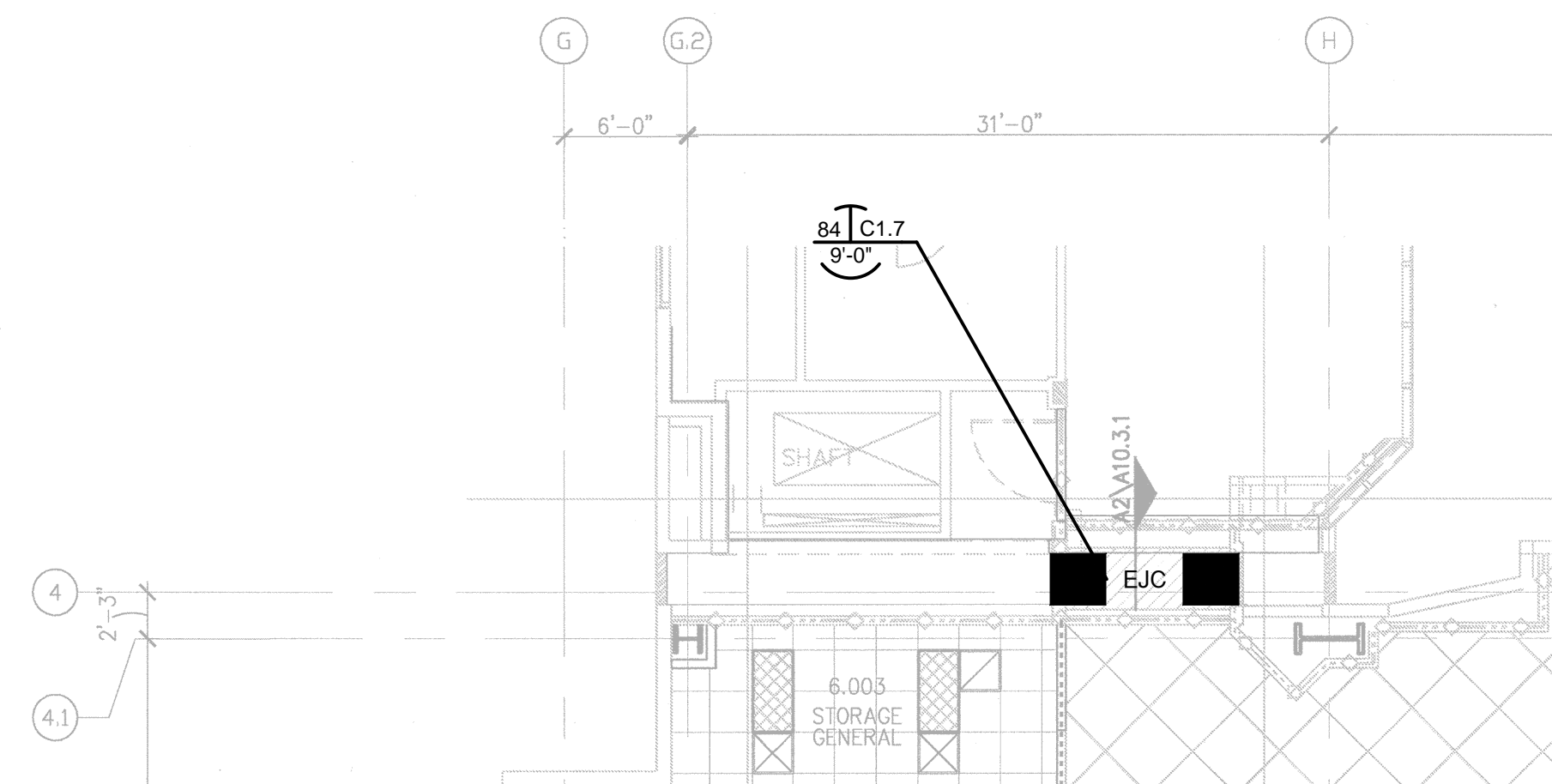
3 LEVEL 4 REFLECTED CEILING PLAN AREA D

REF. ARCH. SHEET A4.4D 1/8" = 1'-0"



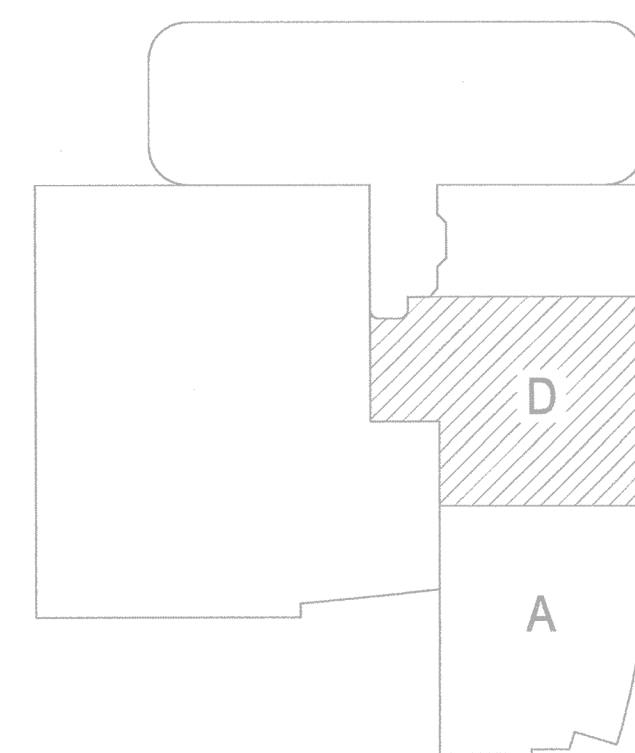
4 LEVEL 5 REFLECTED CEILING PLAN AREA D

REF. ARCH. SHEET A4.5D 1/8" = 1'-0"



5 LEVEL 6 REFLECTED CEILING PLAN AREA D

REF. ARCH. SHEET A4.6D 1/8" = 1'-0"



INCREMENT #7

(A1) KEY PLAN

E.J.C. SYMBOL

REFERENCE NO. SECTION
001 | x
0'-0" |
LENGTH

FLOOR COVER

WALL COVER

EXPANSION JOINT
COVER DESIGNATION: _____

The information shown reflects the scope of the work of our agreement and understanding of the materials and application required for the project. In order to avoid misinterpretation, please advise of any errors or omissions at this approval stage. Our interpretation of approval, regardless of language to the contrary, is as follows:

“REVIEWED” or “APPROVED” signifies that the information shown herein fully complies with the contract documents. (RESUBMIT FOR RECORD, FABRICATION MAY PROCEED AS DETAILED HEREIN)

“REVIEWED AS NOTED” or “APPROVED AS NOTED” signifies that the information shown herein fully complies with the contract documents, provided that the Architect’s notes are incorporated in full, in entirety into the drawings. (REVISE AND RESUBMIT FOR RECORD, FABRICATION MAY PROCEED PER REVISED DRAWINGS)

If drawings are stamped and/or noted in any other fashion than stated above, fabrication may not begin until Architect approves that the work shown herein fully complies with the contract documents. (RESUBMIT REQUIRED)

THESE DRAWINGS COVER WORK INCLUDED IN C/S CONTRACT AND DO NOT INFER OR ACCEPT RESPONSIBILITY FOR DIMENSIONS AFFECTING THE WORK OF OTHER CONTRACTORS.

THE DETAILS OF SURROUNDING CONDITIONS RELATED TO OUR WORK, BUT NOT FURNISHED BY C/S, HAVE BEEN SHOWN ON OUR DRAWINGS IN ACCORDANCE WITH OUR INTERPRETATION OF ARCHITECTURAL DRAWINGS OR OTHER INFORMATION FURNISHED TO C/S, COMBINED WITH OUR CONTRACT REQUIREMENTS.

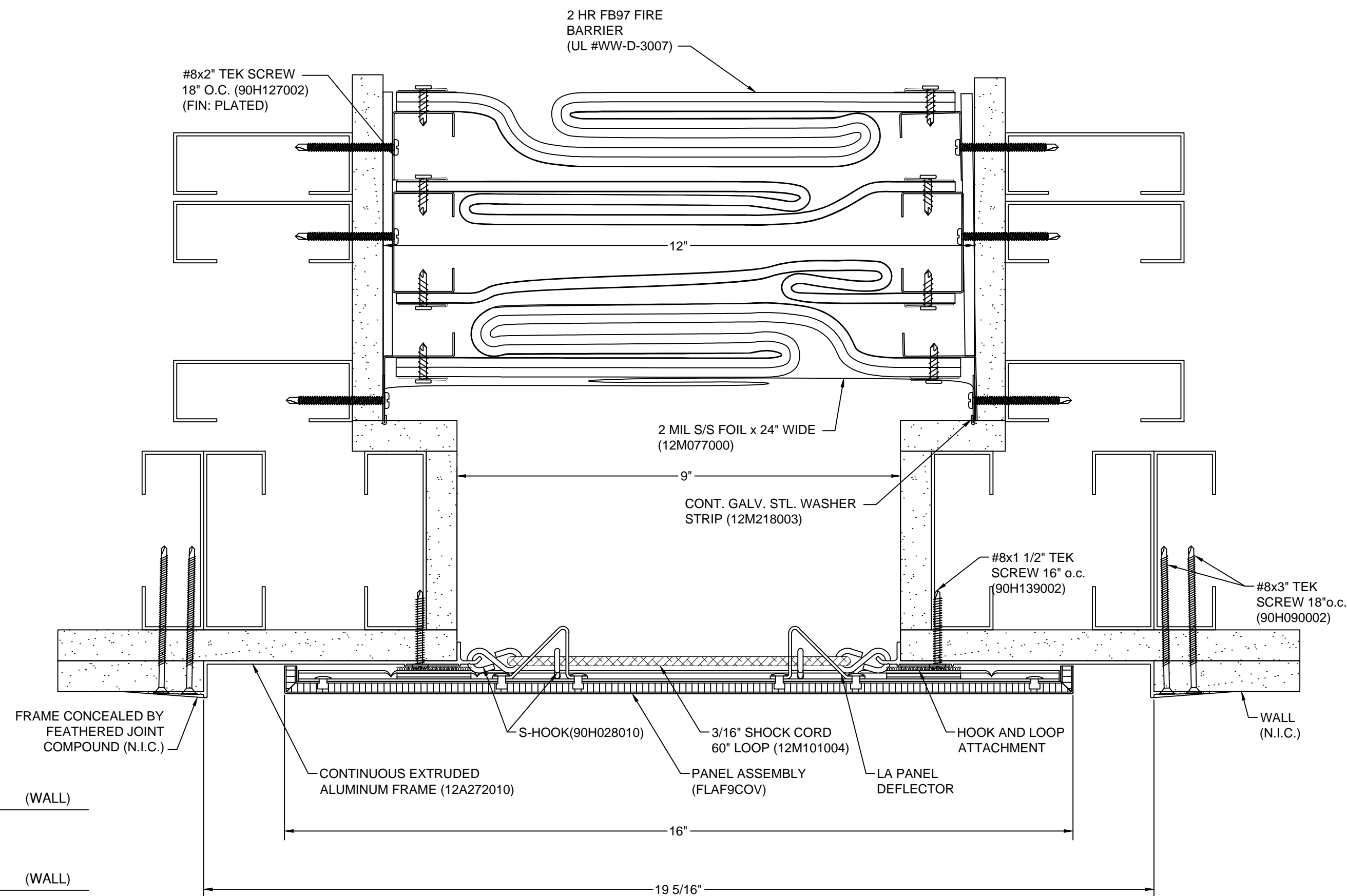
TO ASSURE THE PROPER INSTALLATION OF C/S MATERIALS IN ACCORDANCE W/SURROUNDING MATERIALS, OUR SHOP DRAWINGS MUST BE CHECKED AND COORDINATED BY THE CONTRACTOR AND/OR ARCHITECT AGAINST DRAWINGS PROVIDED BY SUPPLIERS OF THOSE MATERIALS.

Construction Specialties™
6696 Route 405 Highway, Muncy, PA 17756
(800) 233-8493 • Fax (570) 546-8022 • www.c-sgroup.com

This document is the property of Construction Specialties, Inc. and contains confidential proprietary information that is not to be disclosed to third parties and is not to be used without approval in writing from Construction Specialties, Inc.

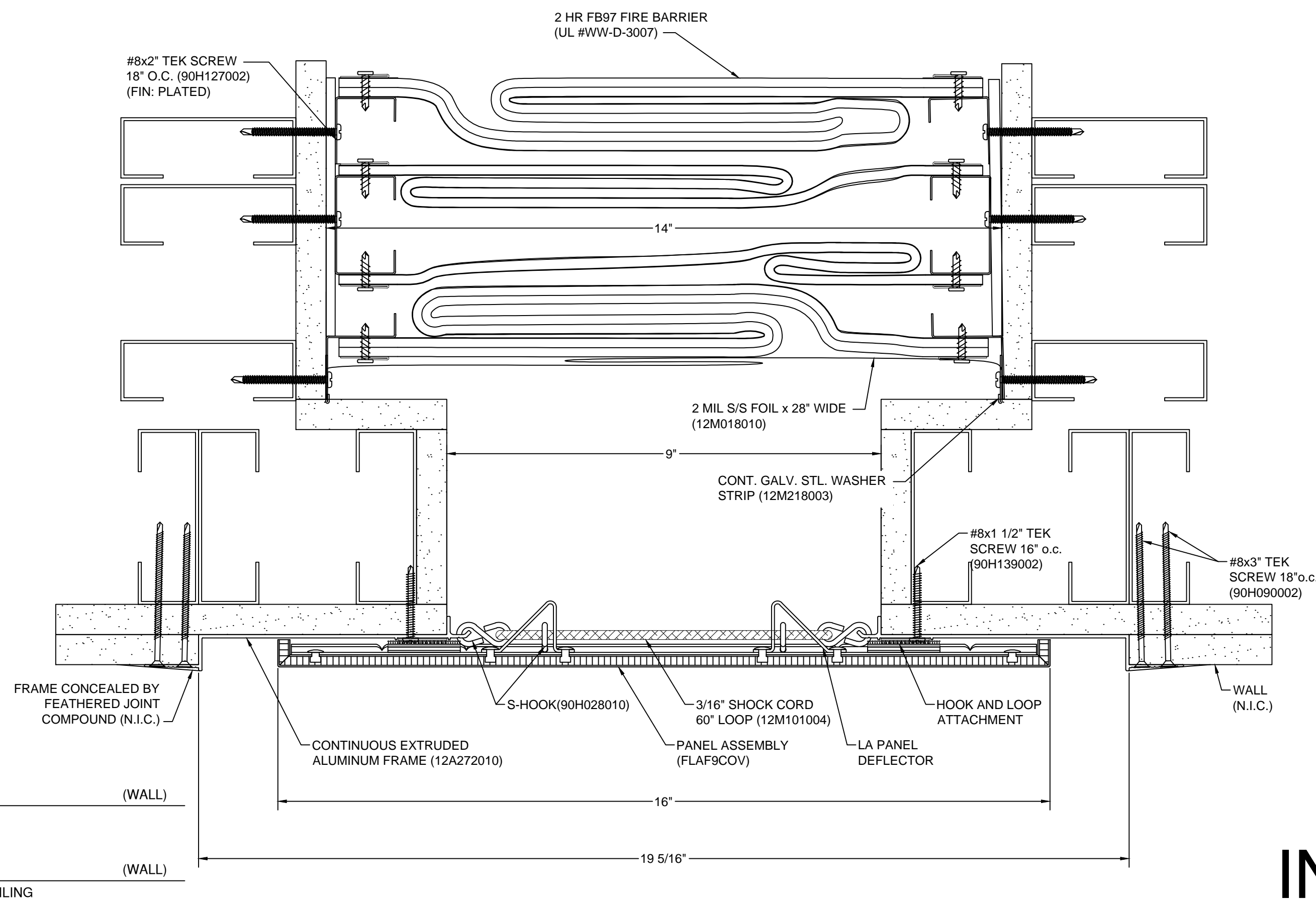
PROJECT:	CHILDREN'S HOSP TOWER 2
JOB NO.:	740483
CUSTOMER:	VNSM
REPRESENTATIVE:	IMC
DRAWN BY:	RH
SCALE:	1/8" = 1'-0"
DATE:	4/27/10
SHEET NO:	L1.5

8			
FABRICATION SCHEDULE			
RELEASE NO. _____		1ST PARTIAL _____	
MARK #	MODEL	QTY	LENGTH
04,05	2FB9712W18	2	10'-0"
04,05	SSF12CLP	1	20'-0"

[illegible]

FABRICATION SCHEDULE			
RELEASE NO. _____		1ST PARTIAL	
MARK #	MODEL	QTY	LENGTH
01,02,48,48A	2FB9714W21	4	10'-0"
01,02,48,48A	SSF14CLP	1	40'-0"

FABRICATION SCHEDULE			
RELEASE NO. 2ND PARTIAL			
MARK #	MODEL	QTY	LENGTH
01,48	LAF9	2	10'-0"



W2.2 LAF-900
REF. ARCH. DETAIL

W2.2A SSF14 & FB9714W
REF. ARCH. DETAIL -ABOVE FINISHED CEILING

REVISIONS			
NO.	DESCRIPTION	DATE	BY
-	-	-	-

FILE AND FIELD			
NO.	DESCRIPTION	DATE	BY
1	1ST PARTIAL RELEASE	10.21.11	RH
2	2nd PARTIAL RELEASE	10.27.11	RH

GENERAL NOTES

C.2 SEISMIC JOINT COVER SPECIFICATION

A. ALL EXTERIOR COMPONENTS MUST BE FURNISHED IN 6063-T5 ALUMINUM ALLOY, WITH GUNDRITE PLATES FURNISHED IN 6061-T6 ALUMINUM ALLOY MATERIAL. UNLESS OTHERWISE NOTED, ALL FLOOR MATERIAL MUST BE FURNISHED IN A MILL FINISH, WELD AND CEILING MATERIAL FURNISHED IN A 20H1 STAINLESS STEEL. ALL ANCHORING FINISH AND ANCHORING MATERIAL MUST BE FURNISHED WITH MASONRY OR CONCRETE SHALL RECEIVE ONE SHOP APPLIED COAT OF HEAVY METAL, FREE / HIGH SOLIDS PRIMER. UNLESS OTHERWISE NOTED.

B. ALL COMPONENTS FURNISHED FOR FIELDS CUTTING IN 20" OR 10" OR STOCK LENGTHS.

C.3 STAINLESS STEEL JOINT SPECIFICATIONS

C.3.1 STAINLESS STEEL JOINT TO BE FURNISHED IN 2 MIL STAINLESS STEEL

D. ALL COMPONENTS FURNISHED FOR FIELD CUTTING

E. THIS MODEL IS INTENDED TO EXTEND THE FIELD CUTTING THROUGH A CHASE OR TO THE SLAB ABOVE A FINISHED CEILING (AT UNEXPOSED LOCATIONS)

F. 2 MIL COVER REQUIRED FOR UNDERWRITERS LABORATORIES TO MAINTAIN THE UL FIRE RATING.

The information shown reflects the scope of work of our agreement and understanding of the materials and application required for the project. In order to avoid misinterpretation, please advise of any errors or omissions at this approval. Our interpretation of approval, regardless of language to the contrary, is as follows:

REVIEWED or **"APPROVED"** signifies that the information shown herein is consistent with the contract documents.

RECORD **FABRICATION MAY PROCEED AS DETAILED HEREIN**

REVIEWED AS NOTED or **"APPROVED AS NOTED"** signifies that the information herein may be used for fabrication of the work, as provided that the Architect's notes are incorporated in their entirety into these drawings. **REVIEW AND RESUBMIT FOR RECORD**, **FABRICATION MAY PROCEED AS NOTED**

Drawings are stamped and/or noted in any other fashion than stated above, fabrication may not begin until Architect approves that the work shown herein fully complies with the contract documents. **(RESUBMIT REQUIRED)**

THESE DRAWINGS COVER WORK INCLUDED IN C/S CONTRACT AND
DO NOT INFER OR ACCEPT RESPONSIBILITY FOR DIMENSIONS
AFFECTING THE WORK OF OTHER CONTRACTORS.

THE DETAILS OF SURROUNDING CONDITIONS RELATED TO OUR WORK, BUT NOT FURNISHED BY C/S, HAVE BEEN SHOWN ON OUR DRAWINGS IN ACCORDANCE WITH OUR INTERPRETATION OF ARCHITECTURAL DRAWINGS OR OTHER INFORMATION FURNISHED TO C/S, COMBINED WITH OUR CONTRACT REQUIREMENTS.

TO ASSURE THE PROPER INSTALLATION OF C/S MATERIALS IN ACCORDANCE W/SURROUNDING MATERIALS, OUR SHOP DRAWINGS MUST BE CHECKED AND COORDINATED BY THE CONTRACTOR AND/OR ARCHITECT AGAINST DRAWINGS PROVIDED BY SUPPLIERS OF THOSE MATERIALS.

Construction Specialties™
6696 Route 405 Highway, Muncy, PA 17756
(800) 233-8493 • Fax (570) 546-8022 • www.c-sgroup.com

This document is the property of Construction Specialties, Inc. and contains confidential proprietary information that is not to be disclosed to third parties and is not to be used without approval in writing from Construction Specialties, Inc.

PROJECT:	CHILDREN'S HOSP TOWER 2
JOB NO.:	740483
CUSTOMER:	VNSM
REPRESENTATIVE:	IMC
DRAWN BY:	RH
SCALE:	1/2
DATE:	4/27/10
SHEET NO:	D1.1

INCREMENT #7

8				7			
FABRICATION SCHEDULE				FABRICATION SCHEDULE			
RELEASE NO.		1ST PARTIAL		RELEASE NO.		2ND PARTIAL	
MARK #	MODEL	QTY	LENGTH	MARK #	MODEL	QTY	LENGTH
15,16,18,19,22,22A	2FB9719W30	6	10'-0"	15,18,22	LAF9	3	10'-0"
15,16,18,19,22,22A	SSF19CLP	1	60'-0"				

REVISIONS			
NO.	DESCRIPTION	DATE	BY
-	-	-	-

FILE AND FIELD			
NO.	DESCRIPTION	DATE	BY
1	1ST PARTIAL RELEASE	10.21.11	RH
2	2nd PARTIAL RELEASE	10.27.11	RH

GENERAL NOTES

- A. CS SEMI-JOINT COVER SPECIFICATION
 - A.1 ALL EXTRUDED COMPONENTS SHALL BE FURNISHED IN 6063-T5 ALUMINUM ALLOY, 20" X 20" WITH END PLATES FURNISHED IN 6061-T6 ALUMINUM SHEET MATERIAL, UNLESS OTHERWISE NOTED.
 - A.2 ALL FLOOR MATERIAL SHALL BE FURNISHED IN A1 M1 FINISH, WELD AND GELING MATERIAL FURNISHED IN 2304Ti FINISH, UNLESS OTHERWISE NOTED. FINISH SHALL BE IN CONTACT WITH MASONRY OR CONCRETE SHALL RECEIVE ONE SHOP APPLIED COAT OF HEAVY METAL FIVE: HIGH SOLIDS PRIMER, UNLESS OTHERWISE NOTED.
- C. ALL COMPONENTS FURNISHED FOR FIELD CUTTING IN 20" x 10" STOCK LENGTH.

CS STAINLESS STEEL FOIL SPECIFICATIONS

- A. CS'S STAINLESS STEEL FOIL TO BE FURNISHED IN 2 MIL STAINLESS STEEL.
- B. ALL COMPONENTS FURNISHED FOR FIELD CUTTING.
 - THIS MODEL IS INTENDED TO EXTEND THE FIELD RATING THROUGH A CHASE OR TO THE SLAB ABOVE A FINISHED CEILING. (AT UNEXPOSED LOCATIONS).
 - A COVER IS REQUIRED BY UNDERWRITERS LABORATORIES TO MAINTAIN THE U.L. FIRE RATING.

The information shown reflects the scope of work of our agreement and understanding of the materials and application required for the project. In order to avoid misinterpretation, please advise of any errors or omissions at this approval stage. Our interpretation of approval, regardless of language to the contrary, is:

"REVISED" or "APPROVED" signifies that the information shown herein fully complies with the contract documents. (RESUBMIT FOR RECORD, FABRICATION MAY PROCEED AS DETAILED HEREIN)

"REVISED AS NOTED" or "APPROVED AS NOTED" signifies that the information shown herein fully complies with the contract documents, provided that the Architect's notes are incorporated in their entirety into these drawings. (REVISE AND RESUBMIT FOR RECORD, FABRICATION MAY PROCEED PER REVISED DRAWINGS)

If drawings are stamped and/or noted in any other fashion than stated above, fabrication may not begin until Architect approves that the work shown herein fully complies with the contract documents. (RESUBMITAL REQUIRED)

THESE DRAWINGS COVER WORK INCLUDED IN C/S CONTRACT AND
DO NOT INFER OR ACCEPT RESPONSIBILITY FOR DIMENSIONS
AFFECTING THE WORK OF OTHER CONTRACTORS.

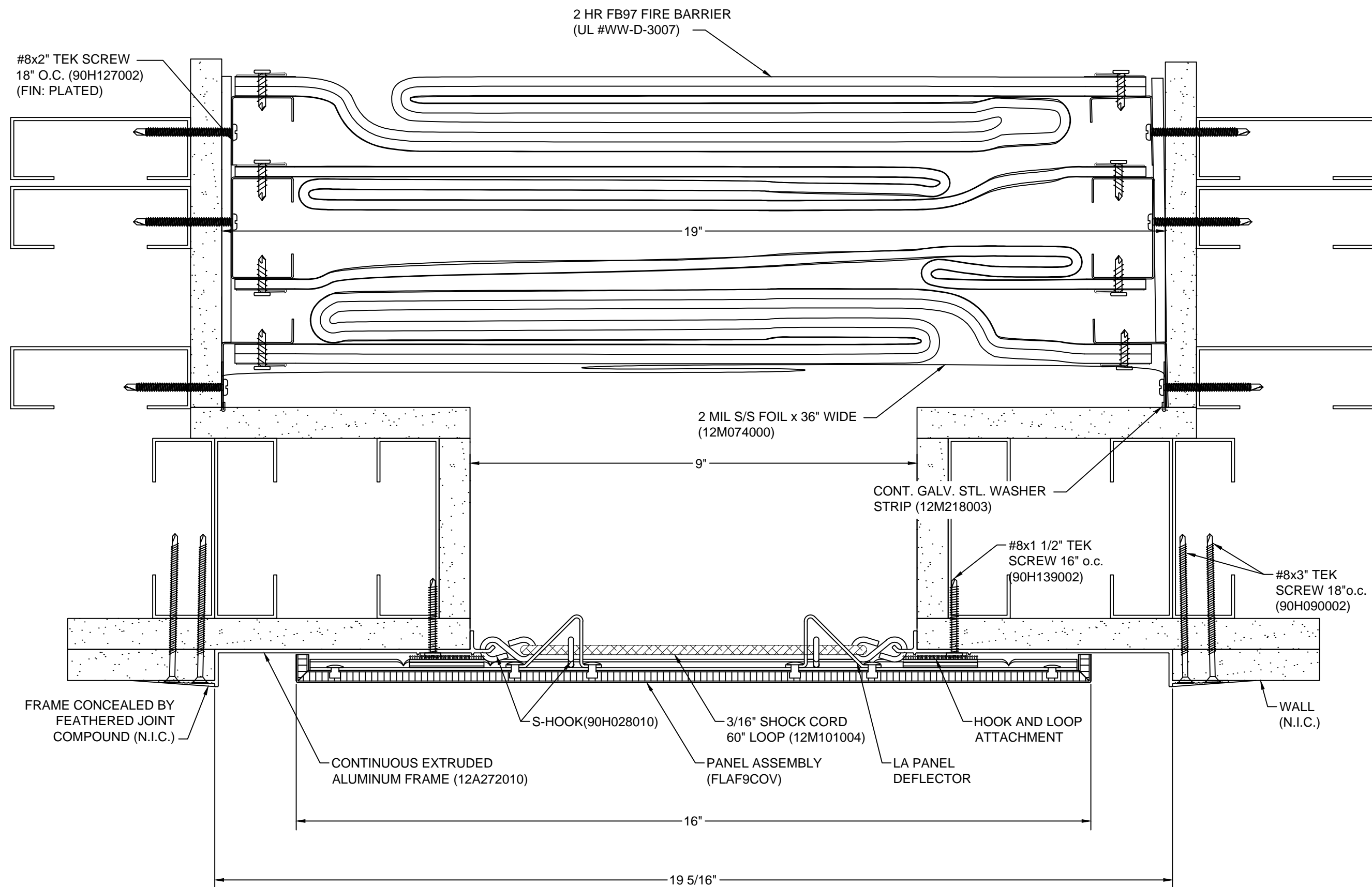
THE DETAILS OF SURROUNDING CONDITIONS RELATED TO OUR WORK, BUT NOT FURNISHED BY C/S, HAVE BEEN SHOWN ON OUR DRAWINGS IN ACCORDANCE WITH OUR INTERPRETATION OF ARCHITECTURAL DRAWINGS OR OTHER INFORMATION FURNISHED TO C/S, COMBINED WITH OUR CONTRACT REQUIREMENTS.

TO ASSURE THE PROPER INSTALLATION OF C/S MATERIALS IN ACCORDANCE W/SURROUNDING MATERIALS, OUR SHOP DRAWINGS MUST BE CHECKED AND COORDINATED BY THE CONTRACTOR AND/OR ARCHITECT AGAINST DRAWINGS PROVIDED BY SUPPLIERS OF THOSE MATERIALS.

Construction Specialties™
6696 Route 405 Highway, Muncy, PA 17756
(800) 233-8493 • Fax (570) 546-8022 • www.c-sgroup.com

This document is the property of Construction Specialties, Inc. and contains confidential proprietary information that is not to be disclosed to third parties and is not to be used without approval in writing from Construction Specialties, Inc.

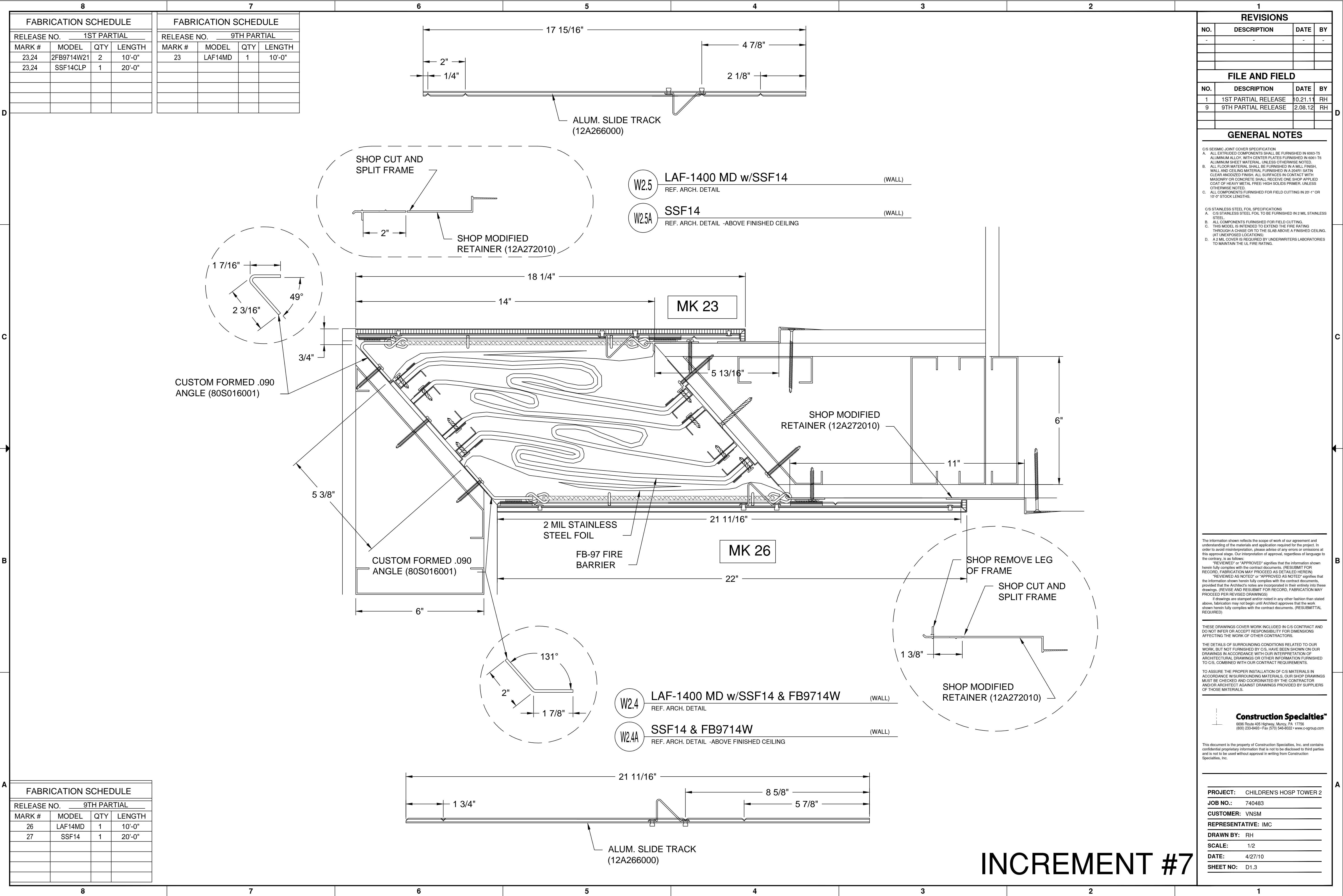
PROJECT:	CHILDREN'S HOSP TOWER 2
JOB NO.:	740483
CUSTOMER:	VNSM
REPRESENTATIVE:	IMC
DRAWN BY:	RH
SCALE:	1/2
DATE:	4/27/10
SHEET NO:	D1.2



W2.3 LAF-900 (WALL)
REF. ARCH. DETAIL

W2.3A SSF19 & FB9719W (WALL)
REF. ARCH. DETAIL -ABOVE FINISHED CEILING

INCREMENT #7



FABRICATION SCHEDULE			
RELEASE NO. 9TH PARTIAL			
MARK #	MODEL	QTY	LENGTH
26	LAF14MD	1	10'-0"
27	SSF14	1	20'-0"

FABRICATION SCHEDULE			
RELEASE NO. 1ST PARTIAL			
MARK #	MODEL	QTY	LENGTH
23,24	2FB9714W21	2	10'-0"
23,24	SSF14CLP	1	20'-0"

FABRICATION SCHEDULE			
RELEASE NO. 9TH PARTIAL			
MARK #	MODEL	QTY	LENGTH
23	LAF14MD	1	10'-0"

REVISIONS

NO.	DESCRIPTION	DATE	BY
-	-	-	-

FILE AND FIELD

NO.	DESCRIPTION	DATE	BY
1	1ST PARTIAL RELEASE	10.21.11	RH
9	9TH PARTIAL RELEASE	2.08.12	RH

GENERAL NOTES

C/S SEISMIC JOINT COVER SPECIFICATION
A. ALL EXTRUDED COMPONENTS SHALL BE FURNISHED IN 6063-T5 ALUMINUM ALLOY, WITH CENTER PLATES FURNISHED IN 6061-T6 ALUMINUM SHEET MATERIAL, UNLESS OTHERWISE NOTED.
B. ALL FLOOR MATERIAL SHALL BE FURNISHED IN A MILL FINISH, WALL AND CEILING MATERIAL FURNISHED IN A 2081 SATIN CLEAR ANODIZED FINISH. ALL SURFACES IN CONTACT WITH MASONRY OR CONCRETE SHALL RECEIVE ONE SHOP APPLIED COAT OF HEAVY METAL FREE/HIGH SOLIDS PRIMER, UNLESS OTHERWISE NOTED.
C. ALL COMPONENTS FURNISHED FOR FIELD CUTTING IN 20'-1" OR 10'-0" STOCK LENGTHS.

C/S STAINLESS STEEL FOIL SPECIFICATIONS
A. C/S STAINLESS STEEL FOIL TO BE FURNISHED IN 2 MIL STAINLESS STEEL.
B. ALL COMPONENTS FURNISHED FOR FIELD CUTTING.
C. THIS MODEL IS INTENDED TO EXTEND THE FIRE RATING THROUGH A CHASE OR TO THE SLAB ABOVE A FINISHED CEILING (AT UNEXPOSED LOCATIONS).
D. A 2 MIL COVER IS REQUIRED BY UNDERWRITERS LABORATORIES TO MAINTAIN THE UL FIRE RATING.

The information shown reflects the scope of work of our agreement and understanding of the materials and application required for the project. In order to avoid misinterpretation, please advise of any errors or omissions at this approval stage. Our interpretation of approval, regardless of language to the contrary, is as follows:
"REVIEWED" or "APPROVED" signifies that the information shown herein fully complies with the contract documents. (RESUBMIT FOR RECORD, FABRICATION MAY PROCEED AS DETAILED HEREIN)
"REVIEWED AS NOTED" or "APPROVED AS NOTED" signifies that the information shown herein fully complies with the contract documents, provided that the Architect's notes are incorporated in their entirety into these drawings. (REVISE AND RESUBMIT FOR RECORD, FABRICATION MAY PROCEED PER REVISED DRAWINGS)
If drawings are stamped and/or noted in any other fashion than stated above, fabrication may not begin until Architect approves that the work shown herein fully complies with the contract documents. (RESUBMITTAL REQUIRED)

THESE DRAWINGS COVER WORK INCLUDED IN C/S CONTRACT AND DO NOT INFER OR ACCEPT RESPONSIBILITY FOR DIMENSIONS AFFECTING THE WORK OF OTHER CONTRACTORS.

THE DETAILS OF SURROUNDING CONDITIONS RELATED TO OUR WORK, BUT NOT FURNISHED BY C/S, HAVE BEEN SHOWN ON OUR DRAWINGS IN ACCORDANCE WITH OUR INTERPRETATION OF ARCHITECTURAL DRAWINGS OR OTHER INFORMATION FURNISHED TO C/S, COMBINED WITH OUR CONTRACT REQUIREMENTS.

TO ASSURE THE PROPER INSTALLATION OF C/S MATERIALS IN ACCORDANCE WITH SURROUNDING MATERIALS, OUR SHOP DRAWINGS MUST BE CHECKED AND COORDINATED BY THE CONTRACTOR (AND/OR ARCHITECT) AGAINST DRAWINGS PROVIDED BY SUPPLIERS OF THOSE MATERIALS.

Construction Specialties[®]

6505 Route 420 Highway, Murry, PA 17755
(800) 233-8493 • Fax (570) 545-8022 • www.c-sgroup.com

This document is the property of Construction Specialties, Inc. and contains confidential proprietary information that is not to be disclosed to third parties and is not to be used without approval in writing from Construction Specialties, Inc.

PROJECT:

CHILDREN'S HOSP TOWER 2

JOB NO.:

740483

CUSTOMER:

VNSM

REPRESENTATIVE:

IMC

DRAWN BY:

RH

SCALE:

1/2

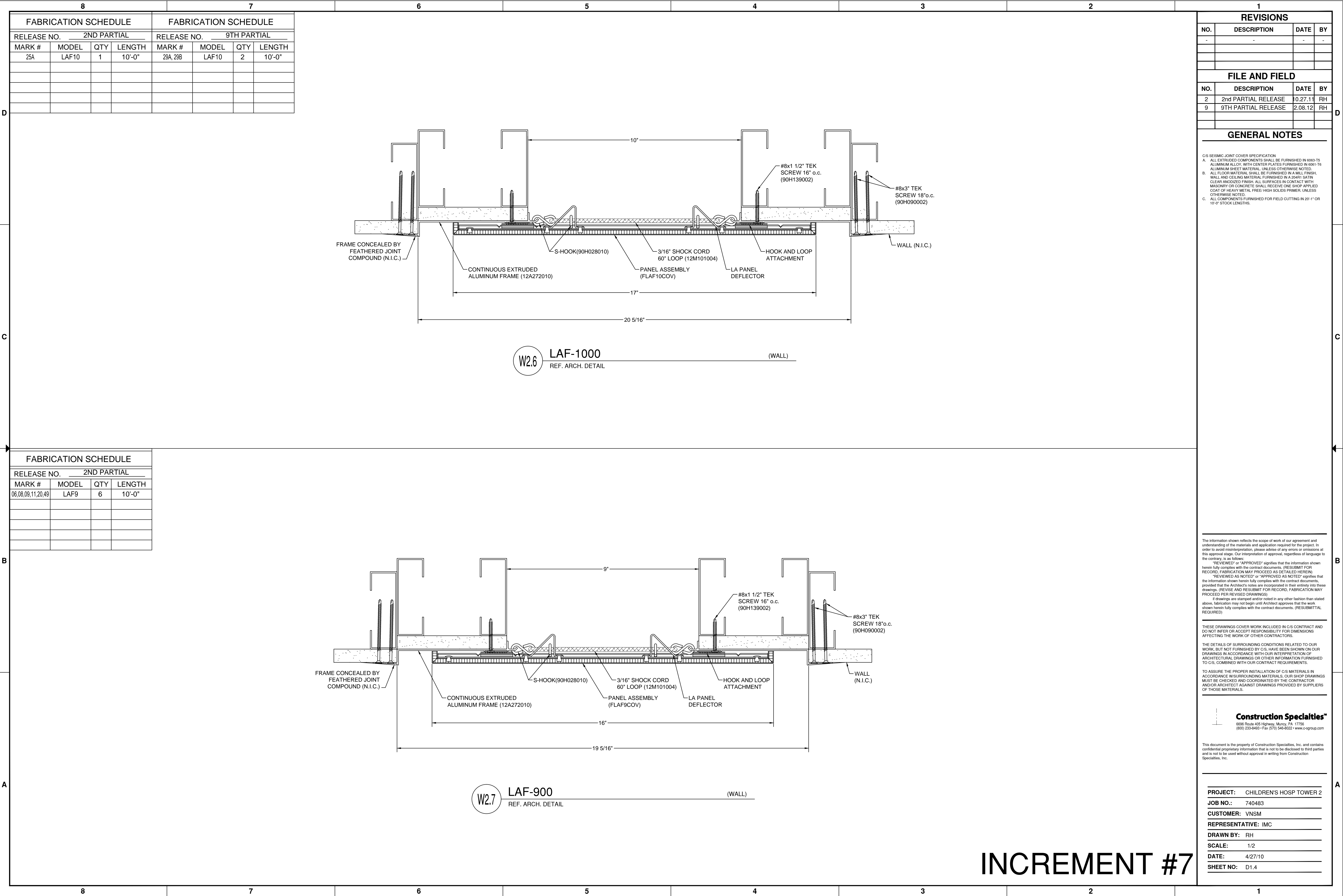
DATE:

4/27/10

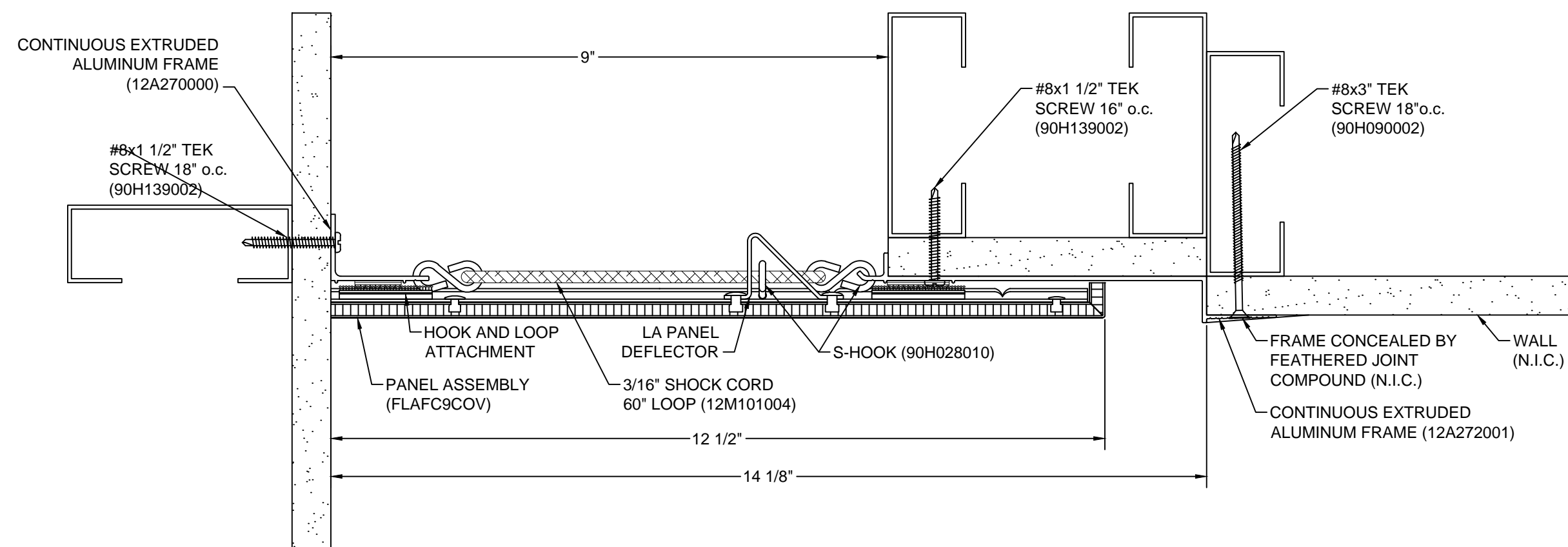
SHEET NO.:

D1.3

INCREMENT #7

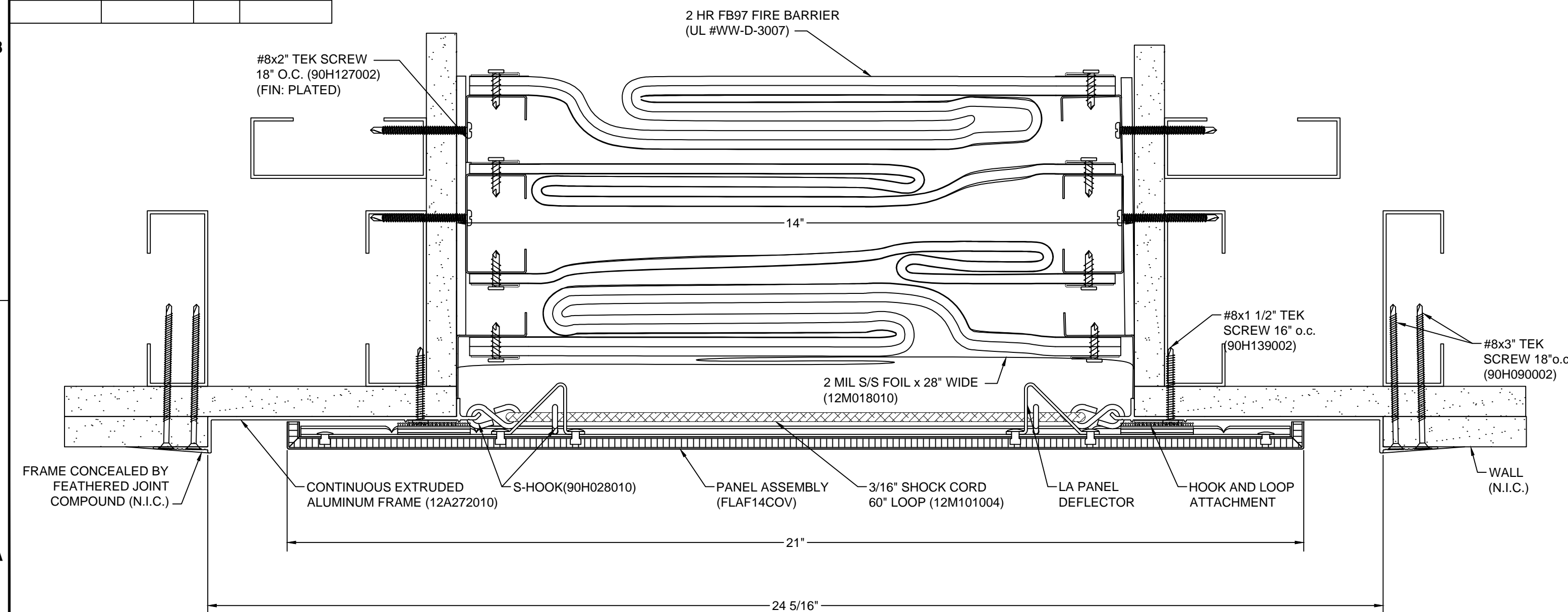


8			
FABRICATION SCHEDULE			
RELEASE NO. 2ND PARTIAL			
MARK #	MODEL	QTY	LENGTH
12,14,50	L AFC9	3	10'-0"



W2.8 LAFC-900 (WALL)
REF. ARCH. DETAIL

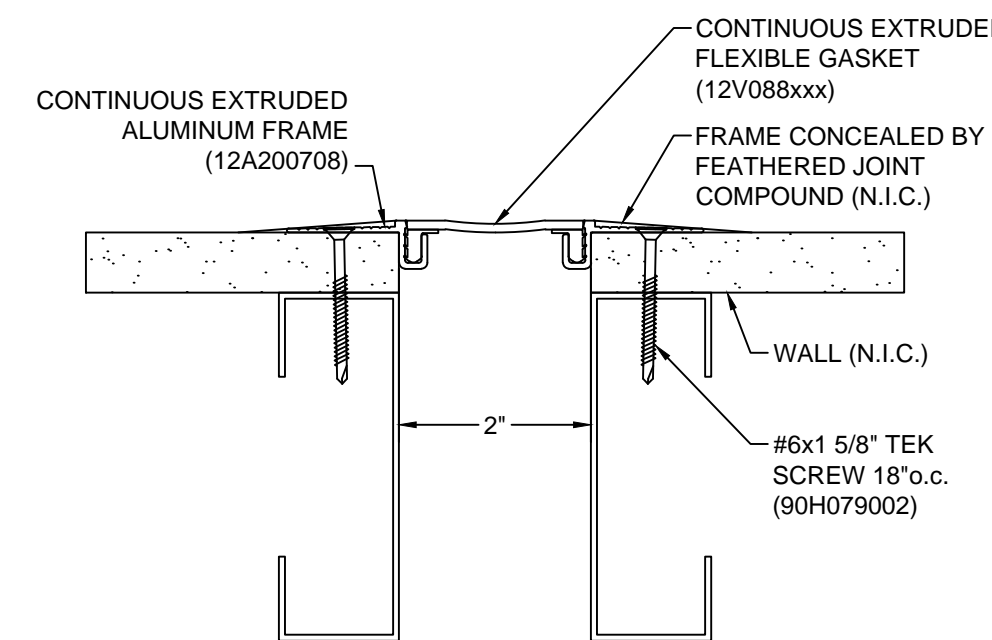
FABRICATION SCHEDULE			
RELEASE NO. _____ 9TH PARTIAL			
MARK #	MODEL	QTY	LENGTH
29D	LAF 14	1	10'-0"
	2FB9714W21	2	10'-0"
	SSF14CLP	1	20'-0"



W2.9	LAF-1400 w/SSF14 & FB9714W REF. ARCH. DETAIL	(WALL)
W2.9A	SSF14 & FB9714W REF. ARCH. DETAIL ABOVE FINISHED CEILING	(WALL)

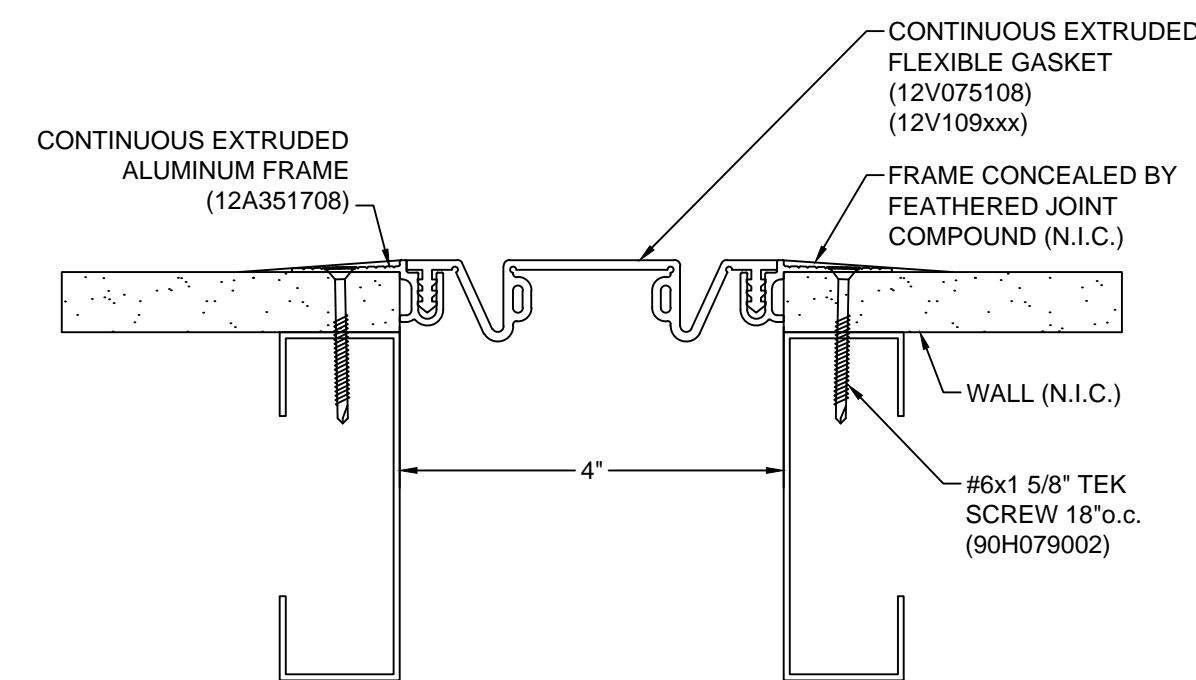
FABRICATION SCHEDULE			
RELEASE NO. _____ 10TH PARTIAL _____			
MARK #	MODEL	QTY	LENGTH
100,101,103,105,106,108 9091	FWF2232	1	54'-0"
	FWF2232	1	22'-0"

	PCO37 & 39
	PCO15R3-PART OF



W2.10 FWF-200 (WALL) REF. ARCH. DETAIL

FABRICATION SCHEDULE			
RELEASE NO. _____		16TH PARTIAL	
MARK #	MODEL	QTY	LENGTH
30,33,34,36	FWF4232	4	9'-4"



W2.11 FWF-400 (WALL)
REF. ARCH. DETAIL

REVISIONS

NO.	DESCRIPTION	DATE	BY
-	-	-	-

FILE AND FIELD

NO.	DESCRIPTION	DATE	BY
2	2nd PARTIAL RELEASE	10.27.11	RH
9	9TH PARTIAL RELEASE	2.08.12	RH
16	16TH PARTIAL	6.11.12	RH

GENERAL NOTES

C/S SEISMIC JOINT COVER SPECIFICATION

- A. ALL EXTRUDED COMPONENTS SHALL BE FURNISHED IN 6063-T5 ALUMINUM ALLOY, WITH CENTER PLATES FURNISHED IN 6061-T6 ALUMINUM SHEET MATERIAL. UNLESS OTHERWISE NOTED.
- B. ALL FLOOR MATERIAL SHALL BE FURNISHED IN A MILL FINISH, AND CEILING MATERIAL FURNISHED IN A 20441 SFIN FINISH. CLEAR ANODIZED FINISH. ALL SURFACES IN CONTACT WITH MASONRY OR CONCRETE SHALL RECEIVE ONE SHOP APPLIED COAT OF HEAVY METAL FREE/ HIGH SOLIDS PRIMER. UNLESS OTHERWISE NOTED.
- C. ALL COMPONENTS FURNISHED FOR FIELD CUTTING IN 20°-1" OR 10°-0" STOCK LENGTHS.

The information shown reflects the scope of work of our agreement and understanding of the materials and application required for the project. In order to avoid misrepresentation, please advise of any errors or omissions at the time of approval. Our interpretation of approval, regardless of language to the contrary, is as follows:

"REVIEWED" or "APPROVED" signifies that the information shown herein is correct with the exception of minor errors or omissions.

"RECORD" / "FABRICATION MAY PROCEED AS DETAILED HEREIN"

"REVIEWED AS NOTED" or "APPROVED AS NOTED" signifies that the information shown herein is correct with the exception of minor errors, provided that the Architect's notes are incorporated in their entirety into these drawings. **REVIEW AND RESUBMIT FOR RECORD, FABRICATION MAY PROCEED AS DETAILED HEREIN**

If drawings are stamped and/or noted in any other fashion than stated above, fabrication may not begin until Architect approves that the work shown is fully compliant with the contract documents. **(RESUBMITTAL REQUIRED)**

THESE DRAWINGS COVER WORK INCLUDED IN C/S CONTRACT AND DO NOT INFER OR ACCEPT RESPONSIBILITY FOR DIMENSIONS AFFECTING THE WORK OF OTHER CONTRACTORS.

THE DETAILS OF SURROUNDING CONDITIONS RELATED TO OUR WORK, BUT NOT FURNISHED BY C/S, HAVE BEEN SHOWN ON OUR DRAWINGS IN ACCORDANCE WITH OUR INTERPRETATION OF ARCHITECTURAL DRAWINGS OR OTHER INFORMATION FURNISHED TO C/S, COMBINED WITH OUR CONTRACT REQUIREMENTS.

TO ASSURE THE PROPER INSTALLATION OF C/S MATERIALS IN ACCORDANCE W/SURROUNDING MATERIALS, OUR SHOP DRAWINGS MUST BE CHECKED AND COORDINATED BY THE CONTRACTOR AND/OR ARCHITECT AGAINST DRAWINGS PROVIDED BY SUPPLIERS OF THOSE MATERIALS.

Construction Specialties™
6696 Route 405 Highway, Muncy, PA 17756
(800) 233-8493 • Fax (570) 546-8022 • www.c-sgroup.com

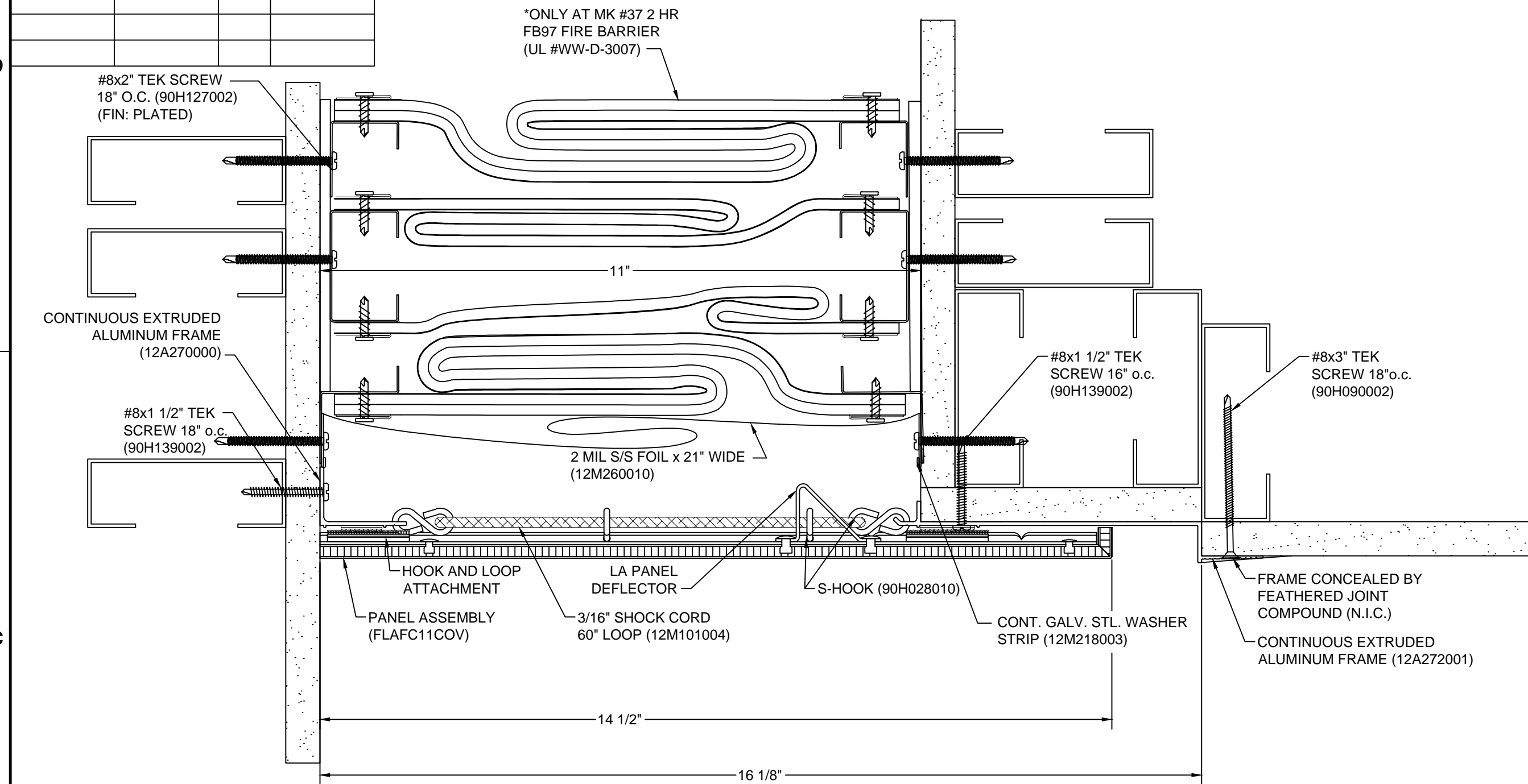
This document is the property of Construction Specialties, Inc. and contains confidential proprietary information that is not to be disclosed to third parties and is not to be used without approval in writing from Construction Specialties, Inc.

PROJECT:	CHILDREN'S HOSP TOWER 2
JOB NO.:	740483
CUSTOMER:	VNSM
REPRESENTATIVE:	IMC
DRAWN BY:	RH
SCALE:	1/2
DATE:	4/27/10
SHEET NO:	D1.5

INCREMENT #7

8			
FABRICATION SCHEDULE			
RELEASE NO. 16TH PARTIAL			
MARK #	MODEL	QTY	LENGTH
37.40	L AFC11	2	10'-0"
37	2FB9711W17	1	20'-0"
37	SSF11CLP	1	20'-0"

13TH PARTIAL
13TH PARTIAL



W2.12 LAFC-1100 W/SSF11 & FB9711W (WALL)
REF. ARCH. DETAIL

[illegible][illegible][illegible]

REVISIONS			
NO.	DESCRIPTION	DATE	BY
-	-	-	-

FILE AND FIELD			
NO.	DESCRIPTION	DATE	BY
2	2nd PARTIAL RELEASE	10.27.11	RH
9	9TH PARTIAL RELEASE	2.08.12	RH
16	16TH PARTIAL	6.11.12	RH

GENERAL NOTES

C/S SEISMIC JOINT COVER SPECIFICATION

- A. ALL EXTRUDED COMPONENTS SHALL BE FURNISHED IN 6063-T6 ALUMINUM ALLOY, WITH CENTER PLATES FURNISHED IN 6061-T6 ALUMINUM SHEET MATERIAL UNLESS OTHERWISE NOTED.
- B. ALL FLOOR MATERIAL SHALL BE FURNISHED IN A MILL FINISH, WALL AND CEILING MATERIAL FURNISHED IN A 204R1 SINT CLEAR ANODIZED FINISH. ALL SURFACES IN CONTACT WITH MASONRY OR CONCRETE SHALL RECEIVE ONE SHOP APPLIED COAT OF HEAVY METAL FREE/ HIGH SOLIDS PRIMER, UNLESS OTHERWISE NOTED.
- C. ALL COMPONENTS FURNISHED FOR FIELD CUTTING IN 20'-1" OR 10'-0" STOCK LENGTHS.

The information shown reflects the scope of work of our agreement and understanding of the materials and application required for the project. In order to avoid misinterpretation, please advise of any errors or omissions at the appropriate time. Our interpretation of approval, regardless of language to the contrary, is as follows:

"REVIEWED" or "APPROVED" signifies that the information shown herein fully complies with the contract documents. (**RESUBMIT FOR RECORD, FABRICATION MAY PROCEED AS DETAILED HEREIN**)

"REVISED AS NOTED" or "APPROVED AS NOTED" signifies that the information shown herein fully complies with the contract documents, provided that the Architect's notes are incorporated in their entirety into these drawings. (**REVISE AND RESUBMIT FOR RECORD, FABRICATION MAY PROCEED PER REVISED DRAWINGS**)

If drawings are stamped and/or noted in any other fashion than stated above, fabrication shall not be permitted and approval that the work shown herein fully complies with the contract documents. (**RESUBMIT/TAKE REQUIRED**)

THESE DRAWINGS COVER WORK INCLUDED IN C/S CONTRACT AND
DO NOT INFER OR ACCEPT RESPONSIBILITY FOR DIMENSIONS
AFFECTING THE WORK OF OTHER CONTRACTORS.

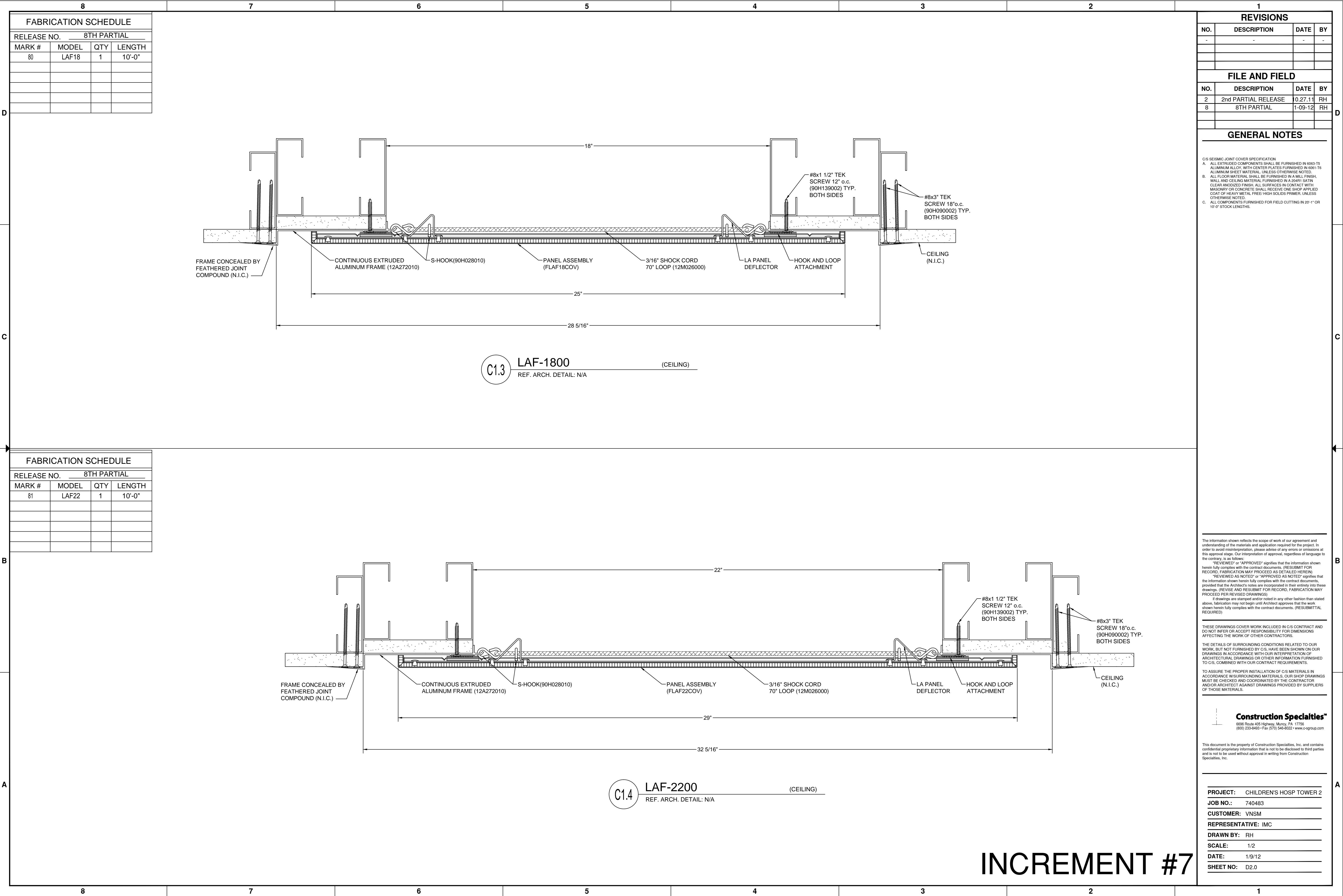
THE DETAILS OF SURROUNDING CONDITIONS RELATED TO OUR WORK, BUT NOT FURNISHED BY C/S, HAVE BEEN SHOWN ON OUR DRAWINGS IN ACCORDANCE WITH OUR INTERPRETATION OF ARCHITECTURAL DRAWINGS OR OTHER INFORMATION FURNISHED TO C/S, COMBINED WITH OUR CONTRACT REQUIREMENTS.

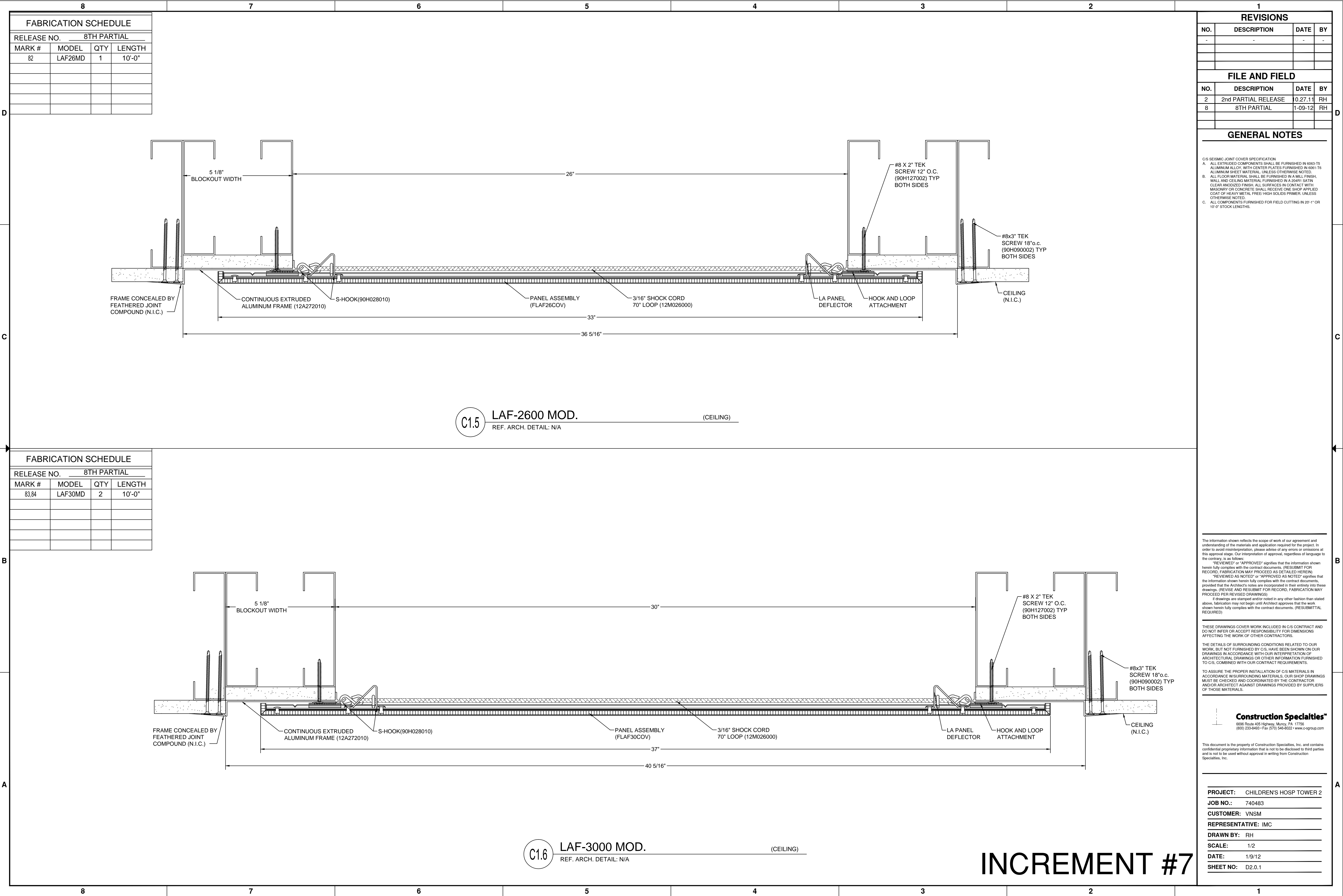
TO ASSURE THE PROPER INSTALLATION OF C/S MATERIALS IN ACCORDANCE W/SURROUNDING MATERIALS, OUR SHOP DRAWINGS MUST BE CHECKED AND COORDINATED BY THE CONTRACTOR AND/OR ARCHITECT AGAINST DRAWINGS PROVIDED BY SUPPLIERS OF THOSE MATERIALS.

Construction Specialties™
6696 Route 405 Highway, Muncy, PA 17756
(800) 233-8493 • Fax (570) 546-8022 • www.c-sgroup.com

This document is the property of Construction Specialties, Inc. and contains confidential proprietary information that is not to be disclosed to third parties and is not to be used without approval in writing from Construction Specialties, Inc.

PROJECT:	CHILDREN'S HOSP TOWER 2
JOB NO.:	740483
CUSTOMER:	VNSM
REPRESENTATIVE:	IMC
DRAWN BY:	RH
SCALE:	1/2
DATE:	4/27/10
SHEET NO:	D1.6





FABRICATION SCHEDULE

RELEASE NO. 2ND PARTIAL

MARK #	MODEL	QTY	LENGTH
39	L AFC11	1	10'-0"
PCO 49R1			

C2.8

L AFC-1100

REF. ARCH. DETAIL

(CEILING)

FABRICATION SCHEDULE

RELEASE NO.

MARK #	MODEL	QTY	LENGTH

FABRICATION SCHEDULE

RELEASE NO.

MARK #	MODEL	QTY	LENGTH

FABRICATION SCHEDULE

RELEASE NO.

MARK #	MODEL	QTY	LENGTH

REVISIONS

NO.	DESCRIPTION	DATE	BY
-	-	-	-

FILE AND FIELD

NO.	DESCRIPTION	DATE	BY
16	16TH PARTIAL	6.11.12	RH

GENERAL NOTES

C/S SEISMIC JOINT COVER SPECIFICATION

A. ALL EXTRUDED COMPONENTS SHALL BE FURNISHED IN 6063-T5 ALUMINUM ALLOY, WITH CENTER PLATES FURNISHED IN 6061-T6 ALUMINUM SHEET MATERIAL, UNLESS OTHERWISE NOTED.

B. ALL FLOOR MATERIAL SHALL BE FURNISHED IN A MILL FINISH, WALL AND CEILING MATERIAL FURNISHED IN A 20MT SATIN CLEAR ANODIZED FINISH. ALL SURFACES IN CONTACT WITH MASONRY OR CONCRETE SHALL RECEIVE ONE SHOP APPLIED COAT OF HEAVY METAL FREE HIGH SOLIDS PRIMER, UNLESS OTHERWISE NOTED.

C. ALL COMPONENTS FURNISHED FOR FIELD CUTTING IN 20'-1" OR 10'-0" STOCK LENGTHS.

The information shown reflects the scope of work of our agreement and understanding of the materials and application required for the project. In order to avoid misinterpretation, please advise of any errors or omissions at this approval stage. Our interpretation of approval, regardless of language to the contrary, is as follows:

"REVIEWED" or "APPROVED" signifies that the information shown herein fully complies with the contract documents. (RESUBMIT FOR RECORD, FABRICATION MAY PROCEED AS DETAILED HEREIN)

"REVIEWED AS NOTED" or "APPROVED AS NOTED" signifies that the information shown herein fully complies with the contract documents, provided that the Architect's notes are incorporated in their entirety into these drawings. (REVISE AND RESUBMIT FOR RECORD, FABRICATION MAY PROCEED PER REVISED DRAWINGS)

If drawings are stamped and/or noted in any other fashion than stated above, fabrication may not begin until Architect approves that the work shown herein fully complies with the contract documents. (RESUBMITTAL REQUIRED)

THESE DRAWINGS COVER WORK INCLUDED IN C/S CONTRACT AND DO NOT INFER OR ACCEPT RESPONSIBILITY FOR DIMENSIONS AFFECTING THE WORK OF OTHER CONTRACTORS.

THE DETAILS OF SURROUNDING CONDITIONS RELATED TO OUR WORK, BUT NOT FURNISHED BY C/S, HAVE BEEN SHOWN ON OUR DRAWINGS IN ACCORDANCE WITH OUR INTERPRETATION OF ARCHITECTURAL DRAWINGS OR OTHER INFORMATION FURNISHED TO C/S, COMBINED WITH OUR CONTRACT REQUIREMENTS.

TO ASSURE THE PROPER INSTALLATION OF C/S MATERIALS IN ACCORDANCE WITH SURROUNDING MATERIALS, OUR SHOP DRAWINGS MUST BE CHECKED AND COORDINATED BY THE CONTRACTOR (AND/OR ARCHITECT) AGAINST DRAWINGS PROVIDED BY SUPPLIERS OF THOSE MATERIALS.

Construction Specialties"

6505 Route 420 Highway, Murry, PA 17755

(800) 233-8493 • Fax (570) 545-8022 • www.c-sgroup.com

This document is the property of Construction Specialties, Inc. and contains confidential proprietary information that is not to be disclosed to third parties and is not to be used without approval in writing from Construction Specialties, Inc.

PROJECT:

CHILDREN'S HOSP TOWER 2

JOB NO.:

740483

CUSTOMER:

VNSM

REPRESENTATIVE:

IMC

DRAWN BY:

RH

SCALE:

1/2

DATE:

4/27/10

SHEET NO.:

D2.3

INCREMENT #7

