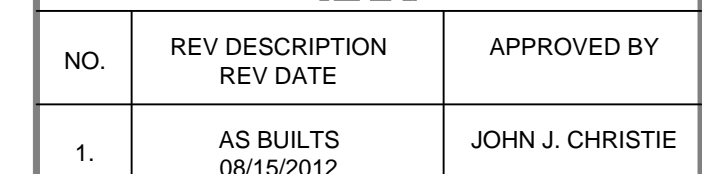


<u>CARD READER #</u>	<u>DOOR #</u>
CR-38	1.000.04
CR-41	1.007.40

THE INFORMATION CONTAINED HEREIN MAY
NOT BE USED OR REPRODUCED IN ANY
MANNER WITHOUT WRITTEN PERMISSION OF
KRATOS | HBE.

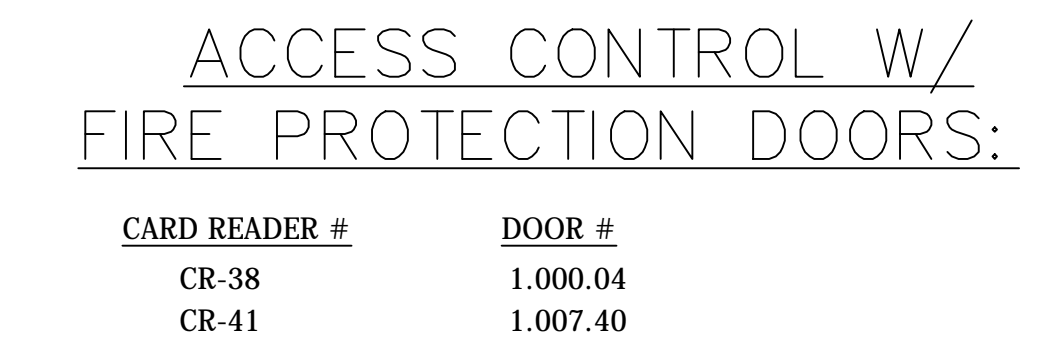


REV.	DESCRIPTION	APPROVED BY
CUSTOMER:		

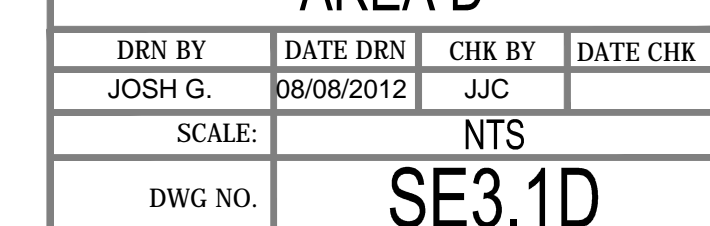


DRN BY	DATE DRN	CHK BY	DATE CHK
JOSH G.	08/08/2012	JJC	
SCALE:	NTS		
DWG NO.	SE3.1A		

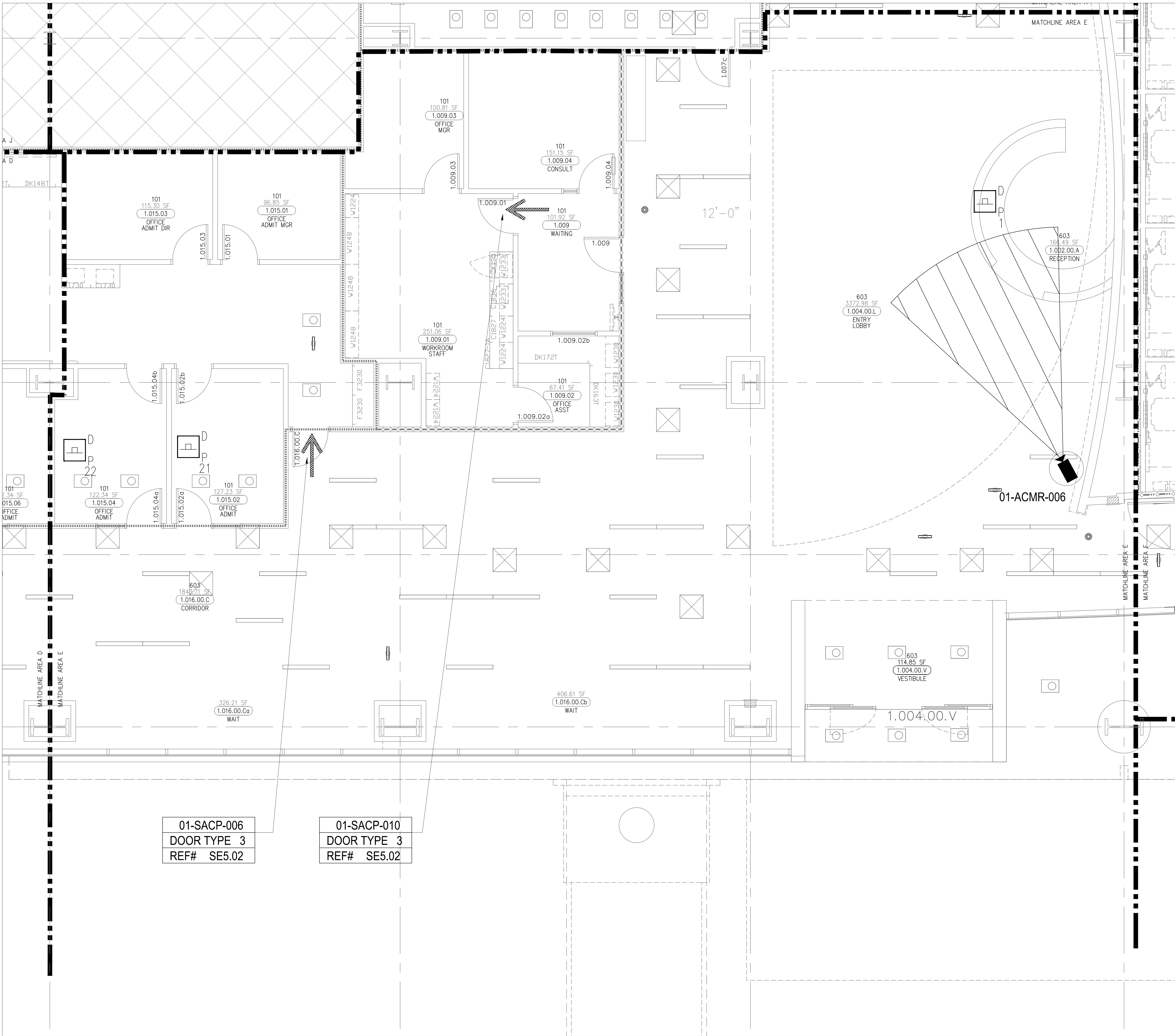
ASBUILTS
08/15/2012



THE INFORMATION CONTAINED HEREIN MAY NOT BE USED OR REPRODUCED IN ANY MANNER WITHOUT WRITTEN PERMISSION OF KRATOS | HBE.



ASBUILTS
08/15/2012



DEVICE	DESCRIPTION	QTY.
CR	CARD READER	2
DC	DOOR CONTACT	2
REX	REQUEST TO EXIT DEVICE W/ DOOR LOCKS	2
EL	ELECTRIFIED LOCK	2
PA	PANIC BUTTON	3
IF	INTERCOMS	0
EP	EMERGENCY PHONE	0
FC	FIXED IP DOME COLOR CAMERA	1
ACP	ACCESS CONTROL PANEL	0
CCTV	CCTV HEAD END LOCATIONS	0
PS	PENETRATION SLEEVES	0

ACCESS CONTROL W/
FIRE PROTECTION DOORS:

CARD READER #	DOOR #
CR-38	1.000.04
CR-41	1.007.40

DRAWING PREPARED BY:

1511 E. ORANGETHORPE BLVD.
FULLERTON, CALIFORNIA 92831
714-525-4350 - o; 714-525-4386 - f
(c) Copyright 2012 KRATOS | HBE
All Rights Reserved.

MUST BE SIGNED BY HBE
TO AUTHENTICATE CONTENT(S).
ALL DETAILS CHECKED FOR ACCURACY.

SIGNATURE _____ DATE _____

HBE JOB # _____

CONFIDENTIAL

THE INFORMATION CONTAINED HEREIN MAY
NOT BE USED OR REPRODUCED IN ANY
MANNER WITHOUT WRITTEN PERMISSION OF
KRATOS | HBE.

KEY PLAN

NO.	REV DESCRIPTION REV DATE	APPROVED BY
1.	AS BUILT 08/15/2012	JOHN J. CHRISTIE

REV. DESCRIPTION APPROVED BY

CUSTOMER:

PROJECT:

CHOC CHILDREN'S
HOSPITAL
455 SOUTH MAIN ST.
ORANGE, CA 92668

DRAWING TITLE:

FIRST LEVEL
SECURITY PLAN
AREA E

DRN BY	DATE DRN	CHK BY	DATE CHK
JOSH G.	08/08/2012	JJC	

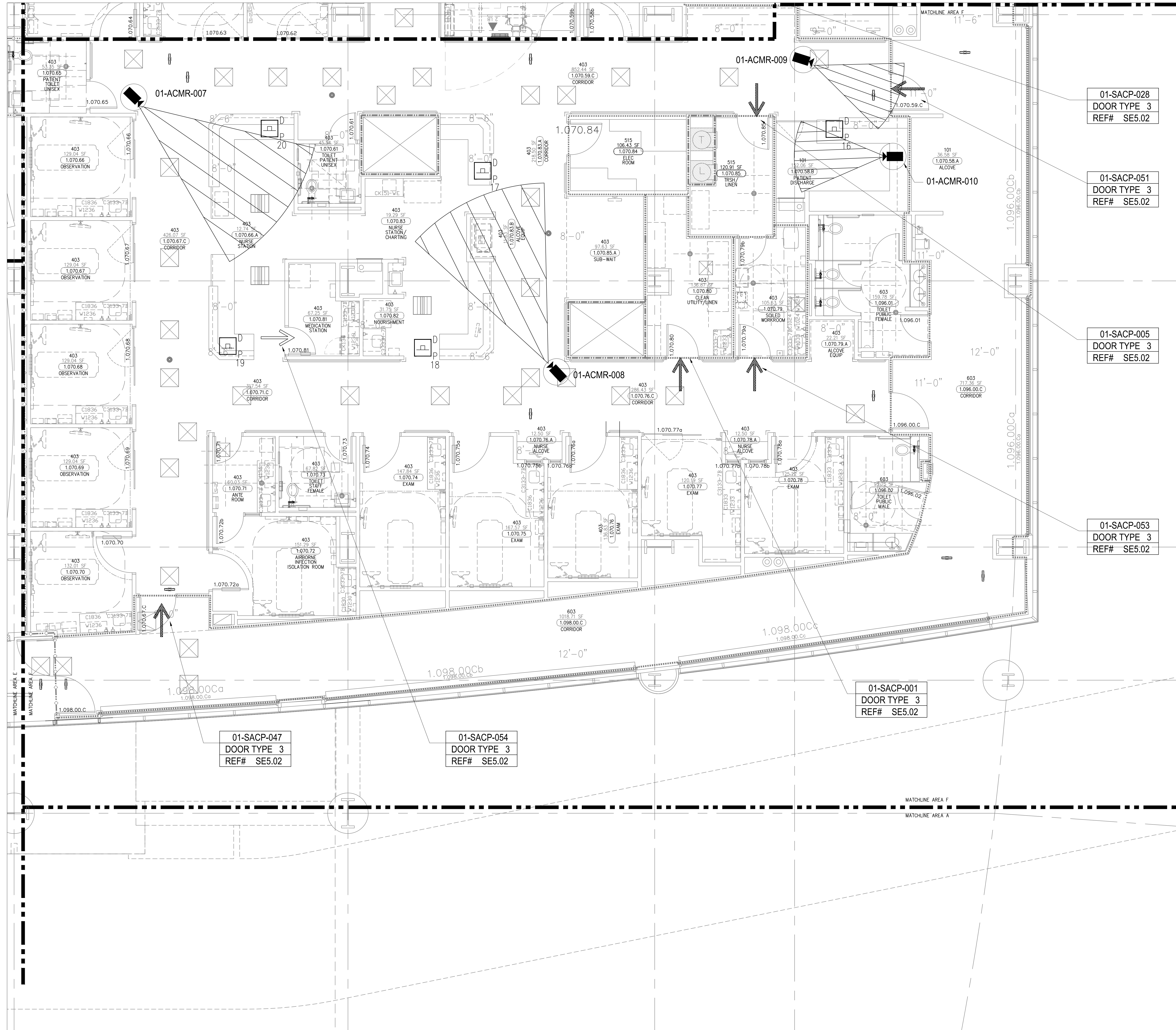
SCALE:

NTS

DWG NO.

SE3.1E

ASBUILTS
08/15/2012



DEVICE	DESCRIPTION	QTY.
CR	CARD READER	7
DC	DOOR CONTACT	7
REX	REQUEST TO EXIT DEVICE W/ DOOR LOCKS	7
EL	ELECTRIFIED LOCK	7
IB	PANIC BUTTON	5
IC	INTERCOMS	0
IP	EMERGENCY PHONE	0
ICM	FIXED IP DOME COLOR CAMERA	4
ACP	ACCESS CONTROL PANEL	0
CCTV	CCTV HEAD END LOCATIONS	0
PS	PENETRATION SLEEVES	0

ACCESS CONTROL W/
FIRE PROTECTION DOORS:

CARD READER #	DOOR #
CR-38	1.000.04
CR-41	1.007.40

01-SACP-028
DOOR TYPE 3
REF# SE5.02

01-SACP-051
DOOR TYPE 3
REF# SE5.02

01-SACP-005
DOOR TYPE 3
REF# SE5.02

01-SACP-053
DOOR TYPE 3
REF# SE5.02

01-SACP-001
DOOR TYPE 3
REF# SE5.02

01-SACP-047
DOOR TYPE 3
REF# SE5.02

01-SACP-054
DOOR TYPE 3
REF# SE5.02

DRAWING PREPARED BY:



1511 E. ORANGETHORPE BLVD.
FULLERTON, CALIFORNIA 92831
714-525-4350 - o; 714-525-4386 - f
(c) Copyright 2012 KRATOS | HBE
All Rights Reserved.

MUST BE SIGNED BY HBE
TO AUTHENTICATE CONTENT(S).
ALL DETAILS CHECKED FOR ACCURACY.

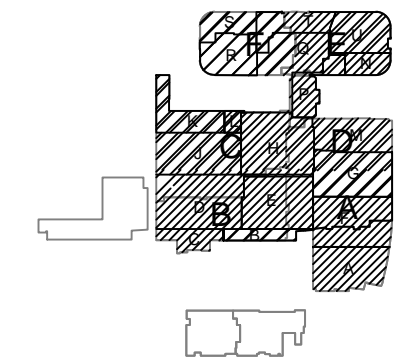
SIGNATURE _____ DATE _____

HBE JOB #

CONFIDENTIAL

THE INFORMATION CONTAINED HEREIN MAY
NOT BE USED OR REPRODUCED IN ANY
MANNER WITHOUT WRITTEN PERMISSION OF
KRATOS | HBE.

KEY PLAN



NO.	REV DESCRIPTION REV DATE	APPROVED BY
1.	AS BUILTS 08/15/2012	JOHN J. CHRISTIE

REV.	DESCRIPTION	APPROVED BY
------	-------------	-------------

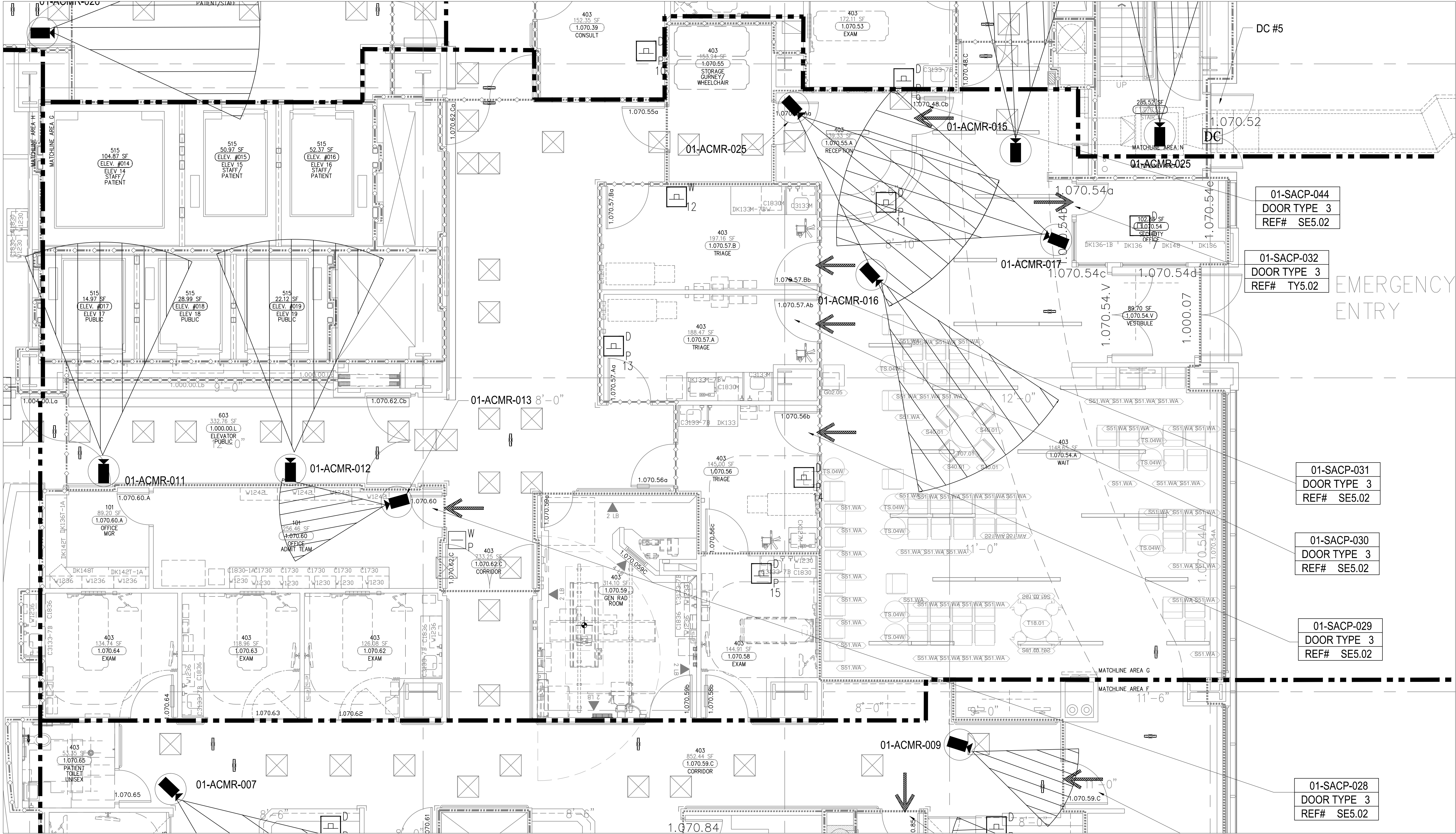


PROJECT:
CHOC CHILDREN'S
HOSPITAL
455 SOUTH MAIN ST.
ORANGE, CA 92668

DRAWING TITLE:
FIRST LEVEL
SECURITY PLAN
AREA F

DRN BY	DATE DRN	CHK BY	DATE CHK
JOSH G.	08/08/2012	JJC	
SCALE:	NTS		
DWG NO.	SE3.1F		

ASBUILTS
08/15/2012



DEVICE	DESCRIPTION	QTY.
CR	CARD READER	6
DC	DOOR CONTACT	6
REX	REQUEST TO EXIT DEVICE W/ DOOR LOCKS	6
EL	ELECTRIFIED LOCK	6
PA	PANIC BUTTON	6
IC	INTERCOMS	0
EP	EMERGENCY PHONE	0
FC	FIXED IP DOME COLOR CAMERA	7
ACP	ACCESS CONTROL PANEL	0
CHL	CCTV HEAD END LOCATIONS	0
PS	PENETRATION SLEEVES	0

ACCESS CONTROL W/
FIRE PROTECTION DOORS:

CARD READER #	DOOR #
CR-38	1.000.04
CR-41	1.007.40

ASBUILTS
08/15/2012

DRAWING PREPARED BY:

1511 E. ORANGETHORPE BLVD.
FULLERTON, CALIFORNIA 92831
714-525-4350 - o; 714-525-4386 - f
(c) Copyright 2012 KRATOS | HBE
All Rights Reserved.

MUST BE SIGNED BY HBE
TO AUTHENTICATE CONTENT(S).
ALL DETAILS CHECKED FOR ACCURACY.

SIGNATURE _____ DATE _____

HBE JOB # _____

CONFIDENTIAL

THE INFORMATION CONTAINED HEREIN MAY
NOT BE USED OR REPRODUCED IN ANY
MANNER WITHOUT WRITTEN PERMISSION OF
KRATOS | HBE.

KEY PLAN

NO.	REV DESCRIPTION REV DATE	APPROVED BY
1.	AS BUILTS 08/15/2012	JOHN J. CHRISTIE

REV. DESCRIPTION

APPROVED BY

CUSTOMER:

PROJECT:

CHOC CHILDREN'S
HOSPITAL
455 SOUTH MAIN ST.
ORANGE, CA 92668

DRAWING TITLE:

FIRST LEVEL
SECURITY PLAN
AREA G

DRN BY	DATE DRN	CHK BY	DATE CHK
JOSH G.	08/08/2012	JJC	
SCALE:	NTS		
DWG NO.	SE3.1G		



**MUST BE SIGNED BY HBE
TO AUTHENTICATE CONTENT(S).
ALL DETAILS CHECKED FOR ACCURACY**

HBE JOB #

THE INFORMATION CONTAINED HEREIN MAY
NOT BE USED OR REPRODUCED IN ANY
MANNER WITHOUT WRITTEN PERMISSION OF
KRATOS | HBE.



CHOCSM
Children's Hospital
of Orange County

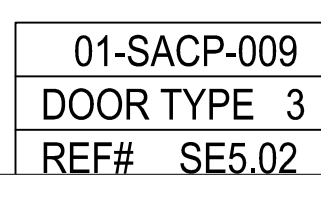
DRAWING TITLE:

DRN BY	DATE DRN	CHK BY	DATE CHK
JOSH G.	08/08/2012	JJC	
SCALE:	NTS		
DWG NO.	SE3.1H		

ACCESS CONTROL W/
FIRE PROTECTION DOORS:

<u>CARD READER #</u>	<u>DOOR #</u>
CR-38	1.000.04
CR-41	1.007.40


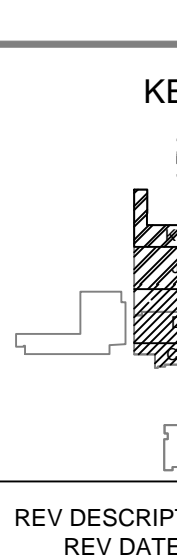

ASBUILTS
08/15/2012

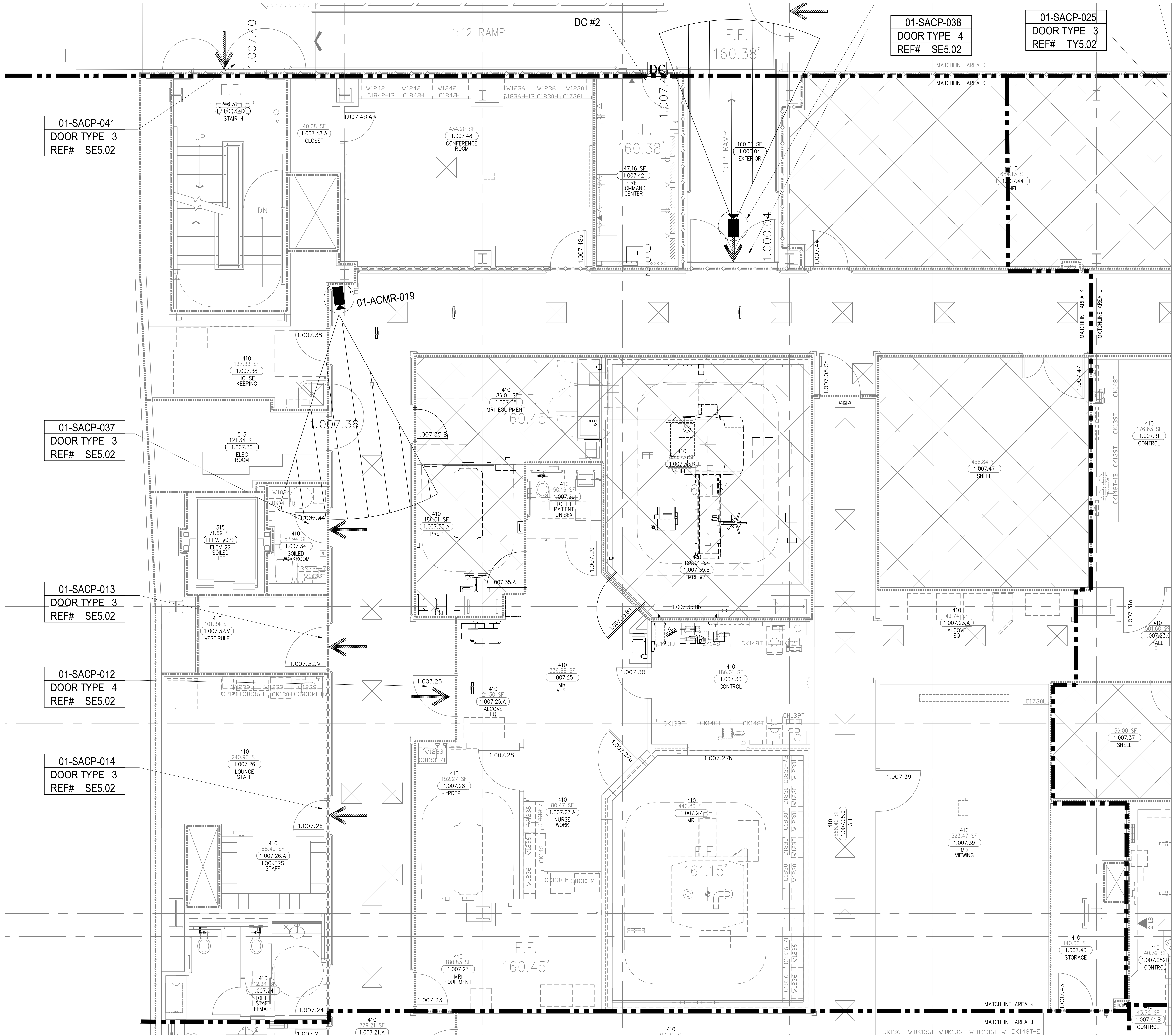


ACCESS CONTROL W/
FIRE PROTECTION DOORS:

<u>CARD READER #</u>	<u>DOOR #</u>
CR-38	1.000.04
CR-41	1.007.40

ASBUILTS
08/15/2012

DRAWING PREPARED BY:			
 <h1 style="margin: 0;">KRATOS[®]</h1> <h2 style="margin: 0; color: #A52A2A;">HBE</h2>			
1511 E. ORANGETHORPE BLVD. FULLERTON, CALIFORNIA 92831 714-525-4350 - o; 714-525-4386 - f (c) Copyright 2012 KRATOS HBE All Rights Reserved.			
MUST BE SIGNED BY HBE TO AUTHENTICATE CONTENT(S). ALL DETAILS CHECKED FOR ACCURACY.			
SIGNATURE _____		DATE _____	
HBE JOB #			
<h2 style="margin: 0;">CONFIDENTIAL</h2> <p style="font-size: small; margin-top: 10px;">THE INFORMATION CONTAINED HEREIN MAY NOT BE USED OR REPRODUCED IN ANY MANNER WITHOUT WRITTEN PERMISSION OF KRATOS HBE.</p>			
KEY PLAN 			
NO.	REV DESCRIPTION REV DATE	APPROVED BY	
1.	A3 BUILTS 08/15/2012	JOHN J. CHRISTIE	
REV.	DESCRIPTION	APPROVED BY	
CUSTOMER:			
			
PROJECT: CHOC CHILDREN'S HOSPITAL 455 SOUTH MAIN ST. ORANGE, CA 92668			
DRAWING TITLE: <h2 style="margin: 0; text-align: center;">FIRST LEVEL SECURITY PLAN AREA J</h2>			
DRN BY	DATE DRN	CHK BY	DATE CHK
JOSH G.	08/08/2012	JJC	
SCALE:		NTS	
DWG NO.		SE3.1J	



DEVICE	DESCRIPTION	QTY.
CR	CARD READER	6
DC	DOOR CONTACT	9
REX	REQUEST TO EXIT DEVICE W/ DOOR LOCKS	6
EL	ELECTRIFIED LOCK	6
PA	PANIC BUTTON	1
IC	INTERCOMS	0
EP	EMERGENCY PHONE	0
FC	FIXED IP DOME COLOR CAMERA	2
ACP	ACCESS CONTROL PANEL	0
CCTV	CCTV HEAD END LOCATIONS	0
PS	PENETRATION SLEEVES	0

ACCESS CONTROL W/
FIRE PROTECTION DOORS:

CARD READER #	DOOR #
CR-38	1.000.04
CR-41	1.007.40

DRAWING PREPARED BY:



1511 E. ORANGETHORPE BLVD.
FULLERTON, CALIFORNIA 92831
714-525-4350 - o; 714-525-4386 - f
(c) Copyright 2012 KRATOS | HBE
All Rights Reserved.

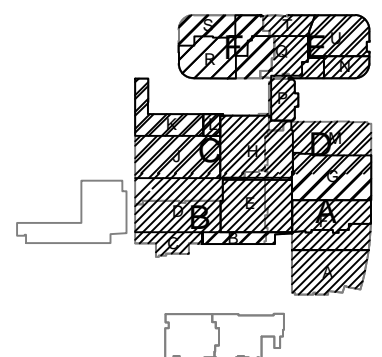
MUST BE SIGNED BY HBE
TO AUTHENTICATE CONTENT(S).
ALL DETAILS CHECKED FOR ACCURACY.

SIGNATURE DATE

HBE JOB #

CONFIDENTIAL
THE INFORMATION CONTAINED HEREIN MAY
NOT BE USED OR REPRODUCED IN ANY
MANNER WITHOUT WRITTEN PERMISSION OF
KRATOS | HBE.

KEY PLAN



NO.	REV DESCRIPTION REV DATE	APPROVED BY
1.	AS BUILTS 08/15/2012	JOHN J. CHRISTIE

REV.	DESCRIPTION	APPROVED BY
------	-------------	-------------

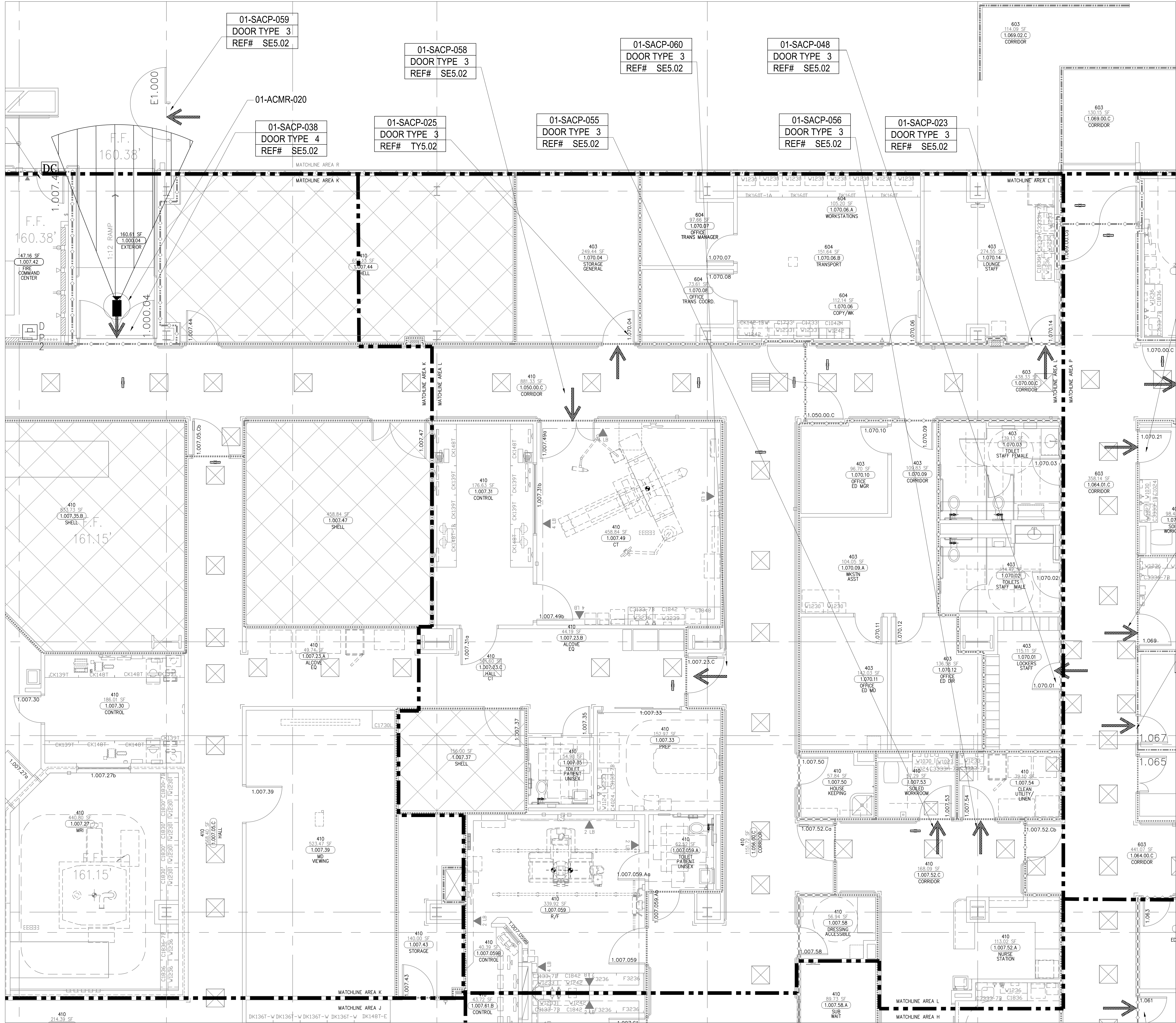


PROJECT:
CHOC CHILDREN'S
HOSPITAL
455 SOUTH MAIN ST.
ORANGE, CA 92668

DRAWING TITLE:
FIRST LEVEL
SECURITY PLAN
AREA K

DEN BY	DATE DRN	CHK BY	DATE CHK
JOSH G.	08/08/2012	JJC	
SCALE:	NTS		
DWG NO.	SE3.1K		

ASBUILTS
08/15/2012



DEVICE	DESCRIPTION	QTY.
CR	CARD READER	7
DC	DOOR CONTACT	8
REX	REQUEST TO EXIT DEVICE W/ DOOR LOCKS	7
EL	ELECTRIFIED LOCK	7
LA	PANIC BUTTON	0
EP	INTERCOMS	0
DP	EMERGENCY PHONE	0
ICD	FIXED IP DOME COLOR CAMERA	0
ACP	ACCESS CONTROL PANEL	0
CHL	CCTV HEAD END LOCATIONS	0
PS	PENETRATION SLEEVES	0

ACCESS CONTROL W/
FIRE PROTECTION DOORS:

CARD READER #	DOOR #
CR-38	1.000.04
CR-41	1.007.40

DRAWING PREPARED BY:

KRATOS
HBE

1511 E. ORANGETHORPE BLVD.
FULLERTON, CALIFORNIA 92831
714-525-4350 - o; 714-525-4386 - f
(c) Copyright 2012 KRATOS | HBE
All Rights Reserved.

MUST BE SIGNED BY HBE
TO AUTHENTICATE CONTENT(S).
ALL DETAILS CHECKED FOR ACCURACY.

SIGNATURE: _____ DATE: _____

HBE JOB #

CONFIDENTIAL

THE INFORMATION CONTAINED HEREIN MAY
NOT BE USED OR REPRODUCED IN ANY
MANNER WITHOUT WRITTEN PERMISSION OF
KRATOS | HBE.

KEY PLAN

NO.	REV DESCRIPTION REV DATE	APPROVED BY
1.	AS BUILTS 08/15/2012	JOHN J. CHRISTIE

REV.	DESCRIPTION	APPROVED BY
CUSTOMER:	 CHOC Children's Hospital of Orange County	

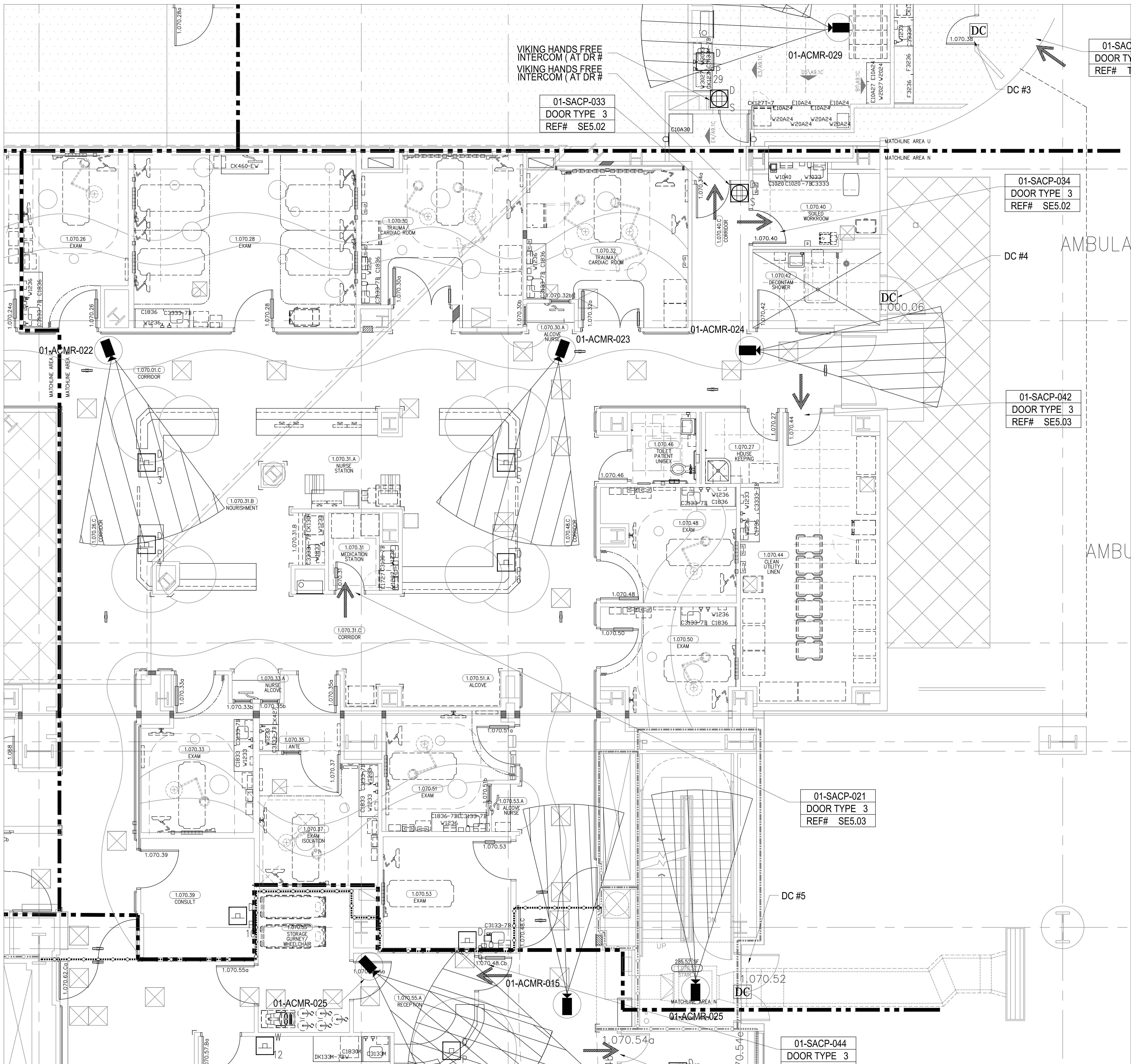
PROJECT:
CHOC CHILDREN'S
HOSPITAL
455 SOUTH MAIN ST.
ORANGE, CA 92668

DRAWING TITLE:
FIRST LEVEL
SECURITY PLAN
AREA L

DRN BY	DATE DRN	CHK BY	DATE CHK
JOSH G.	08/08/2012	JJC	

SCALE:	NTS
DWG NO.	SE3.1L

ASBUILTS
08/15/2012



DEVICE	DESCRIPTION	QTY.
CR	CARD READER	4
DC	DOOR CONTACT	6
REX	REQUEST TO EXIT DEVICE W/ DOOR LOCKS	4
EL	ELECTRIFIED LOCK	4
IB	PANIC BUTTON	6
IC	INTERCOMS	0
EP	EMERGENCY PHONE	0
FC	FIXED IP DOME COLOR CAMERA	0
ACP	ACCESS CONTROL PANEL	0
CHL	CCTV HEAD END LOCATIONS	0
PS	PENETRATION SLEEVES	0

ACCESS CONTROL W/
FIRE PROTECTION DOORS:

CARD READER #	DOOR #
CR-38	1.000.04
CR-41	1.007.40

DRAWING PREPARED BY:



1511 E. ORANGETHORPE BLVD.
FULLERTON, CALIFORNIA 92831
714-525-4350 - o; 714-525-4386 - f
(c) Copyright 2012 KRATOS | HBE
All Rights Reserved.

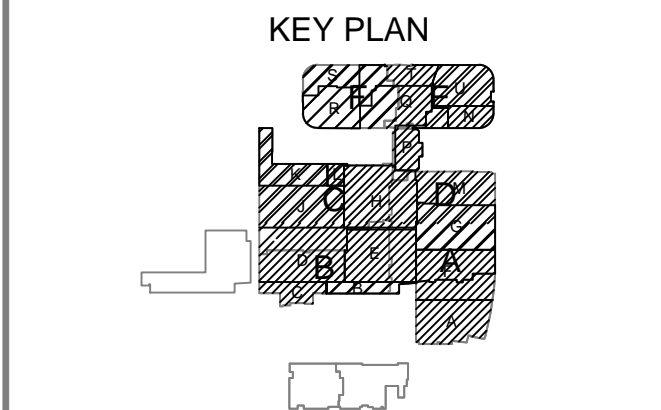
MUST BE SIGNED BY HBE
TO AUTHENTICATE CONTENT(S).
ALL DETAILS CHECKED FOR ACCURACY.

SIGNATURE _____ DATE _____

HBE JOB # _____

CONFIDENTIAL

THE INFORMATION CONTAINED HEREIN MAY
NOT BE USED OR REPRODUCED IN ANY
MANNER WITHOUT WRITTEN PERMISSION OF
KRATOS | HBE.



NO.	REV DESCRIPTION REV DATE	APPROVED BY
1.	AS BUILTS 08/15/2012	JOHN J. CHRISTIE

REV.	DESCRIPTION	APPROVED BY
------	-------------	-------------

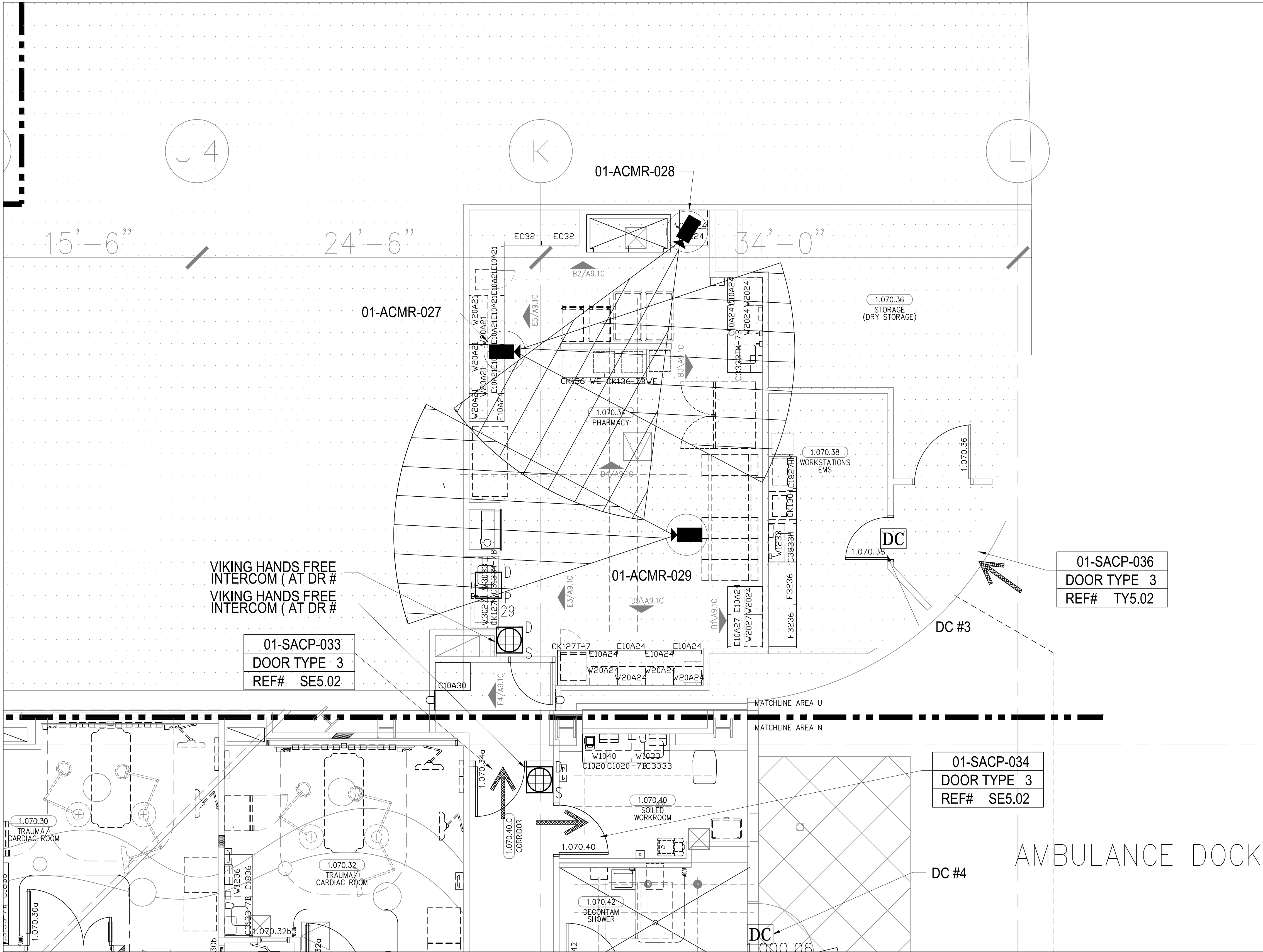


PROJECT:
CHOC CHILDREN'S
HOSPITAL
455 SOUTH MAIN ST.
ORANGE, CA 92668

DRAWING TITLE:
FIRST LEVEL
SECURITY PLAN
AREA N

DRN BY	DATE DRN	CHK BY	DATE CHK
JOSH G.	08/08/2012	JJC	
SCALE:	NTS		
DWG NO.	SE3.1N		

ASBUILTS
08/15/2012



DEVICE	DESCRIPTION	QTY.
CR	CARD READER	1
DC	DOOR CONTACT	2
REX	REQUEST TO EXIT DEVICE W/ DOOR LOCKS	1
EL	ELECTRIFIED LOCK	1
PB	PANIC BUTTON	1
IC	INTERCOMS	1
EP	EMERGENCY PHONE	0
IPC	FIXED IP DOME COLOR CAMERA	3
ACP	ACCESS CONTROL PANEL	0
CHL	CCTV HEAD END LOCATIONS	0
PS	PENETRATION SLEEVES	0

ACCESS CONTROL W/
FIRE PROTECTION DOORS:

CARD READER #	DOOR #
CR-38	1.000.04
CR-41	1.007.40

DRAWING PREPARED BY:
KRATOS HBE

1511 E. ORANGETHORPE BLVD.
FULLERTON, CALIFORNIA 92831
714-525-4350 - o; 714-525-4386 - f
(c) Copyright 2012 KRATOS | HBE
All Rights Reserved.

MUST BE SIGNED BY HBE
TO AUTHENTICATE CONTENT(S).
ALL DETAILS CHECKED FOR ACCURACY.

SIGNATURE _____ DATE _____

HBE JOB # _____

CONFIDENTIAL

THE INFORMATION CONTAINED HEREIN MAY
NOT BE USED OR REPRODUCED IN ANY
MANNER WITHOUT WRITTEN PERMISSION OF
KRATOS | HBE.

KEY PLAN

NO.	REV DESCRIPTION REV DATE	APPROVED BY
1.	AS BUILT 08/15/2012	JOHN J. CHRISTIE

REV. DESCRIPTION APPROVED BY

CUSTOMER:

CHOC
Children's Hospital
of Orange County

PROJECT:

CHOC CHILDREN'S
HOSPITAL
455 SOUTH MAIN ST.
ORANGE, CA 92668

DRAWING TITLE:

FIRST LEVEL
SECURITY PLAN
AREA U

DRN BY	DATE DRN	CHK BY	DATE CHK
JOSH G.	08/08/2012	JJC	

SCALE:

NTS

DWG NO.

SE3.1U

ASBUILT
08/15/2012