



DEVICE LEGEND

DEVICE	DESCRIPTION	QTY.
CR	CARD READER	43
DC	DOOR CONTACT	45
REX	REQUEST TO EXIT DEVICE W/ DOOR LOCKS	43
EL	ELECTRIFIED LOCK	43
PB	PANIC BUTTON	10
IC	INTERCOMS	1
FC	FIXED IP DOME COLOR CAMERA	13
PTZ	PTZ IP DOME COLOR CAMERA	1
ACP	ACCESS CONTROL PANEL	3
CCTV	CCTV HEAD END LOCATIONS	3
PS	PENETRATION SLEEVES	0

ACCESS CONTROL W/  
FIRE PROTECTION DOORS:

CARD READER #	DOOR #
CR-01	3.044
CR-03	3.083
CR-09	3.026
CR-31	3.106.12

DRAWING PREPARED BY:



1511 E. ORANGETHORPE BLVD.  
FULLERTON, CALIFORNIA 92831  
714-525-4350 - o; 714-525-4386 - f  
(c) Copyright 2012 KRATOS | HBE  
All Rights Reserved.

MUST BE SIGNED BY HBE  
TO AUTHENTICATE CONTENT(S).  
ALL DETAILS CHECKED FOR ACCURACY.

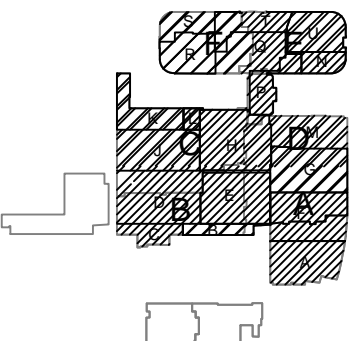
SIGNATURE \_\_\_\_\_ DATE \_\_\_\_\_

HBE JOB #

CONFIDENTIAL

THE INFORMATION CONTAINED HERIN MAY  
NOT BE USED OR REPRODUCED IN ANY  
MANNER WITHOUT WRITTEN PERMISSION OF  
KRATOS | HBE.

KEY PLAN



NO.	REV DESCRIPTION REV DATE	APPROVED BY
1.	AS BUILTS 08/15/2012	JOHN J. CHRISTIE

REV.	DESCRIPTION	APPROVED BY
------	-------------	-------------

CUSTOMER:



PROJECT:

CHOC CHILDREN'S  
HOSPITAL  
455 SOUTH MAIN ST.  
ORANGE, CA 92668

DRAWING TITLE:

THIRD LEVEL  
SECURITY PLAN

DRN BY	DATE DRN	CHK BY	DATE CHK
JOSH G.	08/08/2012	JJC	
SCALE:	NTS		
DWG NO.	SE3.03		

ASBUILTS  
08/15/2012

DRAWING PREPARED BY:



1511 E. ORANGETHORPE BLVD.  
FULLERTON, CALIFORNIA 92831  
714-525-4350 - o; 714-525-4386 - f  
(c) Copyright 2012 KRATOS | HBE  
All Rights Reserved.

MUST BE SIGNED BY HBE  
TO AUTHENTICATE CONTENT(S).  
ALL DETAILS CHECKED FOR ACCURACY.

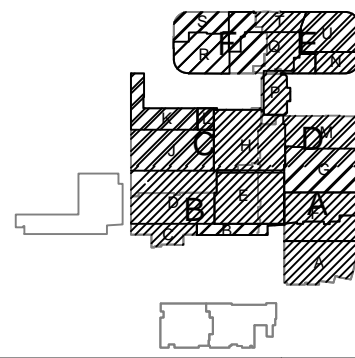
SIGNATURE \_\_\_\_\_ DATE \_\_\_\_\_

HBE JOB #

CONFIDENTIAL

THE INFORMATION CONTAINED HEREIN MAY  
NOT BE USED OR REPRODUCED IN ANY  
MANNER WITHOUT WRITTEN PERMISSION OF  
KRATOS | HBE.

KEY PLAN



NO.	REV DESCRIPTION REV DATE	APPROVED BY
1.	AS BUILTS 08/15/2012	JOHN J. CHRISTIE

REV.	DESCRIPTION	APPROVED BY
------	-------------	-------------

CUSTOMER:



PROJECT:

CHOC CHILDREN'S  
HOSPITAL  
455 SOUTH MAIN ST.  
ORANGE, CA 92668

DRAWING TITLE:

THIRD LEVEL  
SECURITY PLAN  
AREA A

DRN BY	DATE DRN	CHK BY	DATE CHK
JOSH G.	08/08/2012	JJC	
SCALE:	NTS		
DWG NO.	SE3.03A		

## DEVICE LEGEND

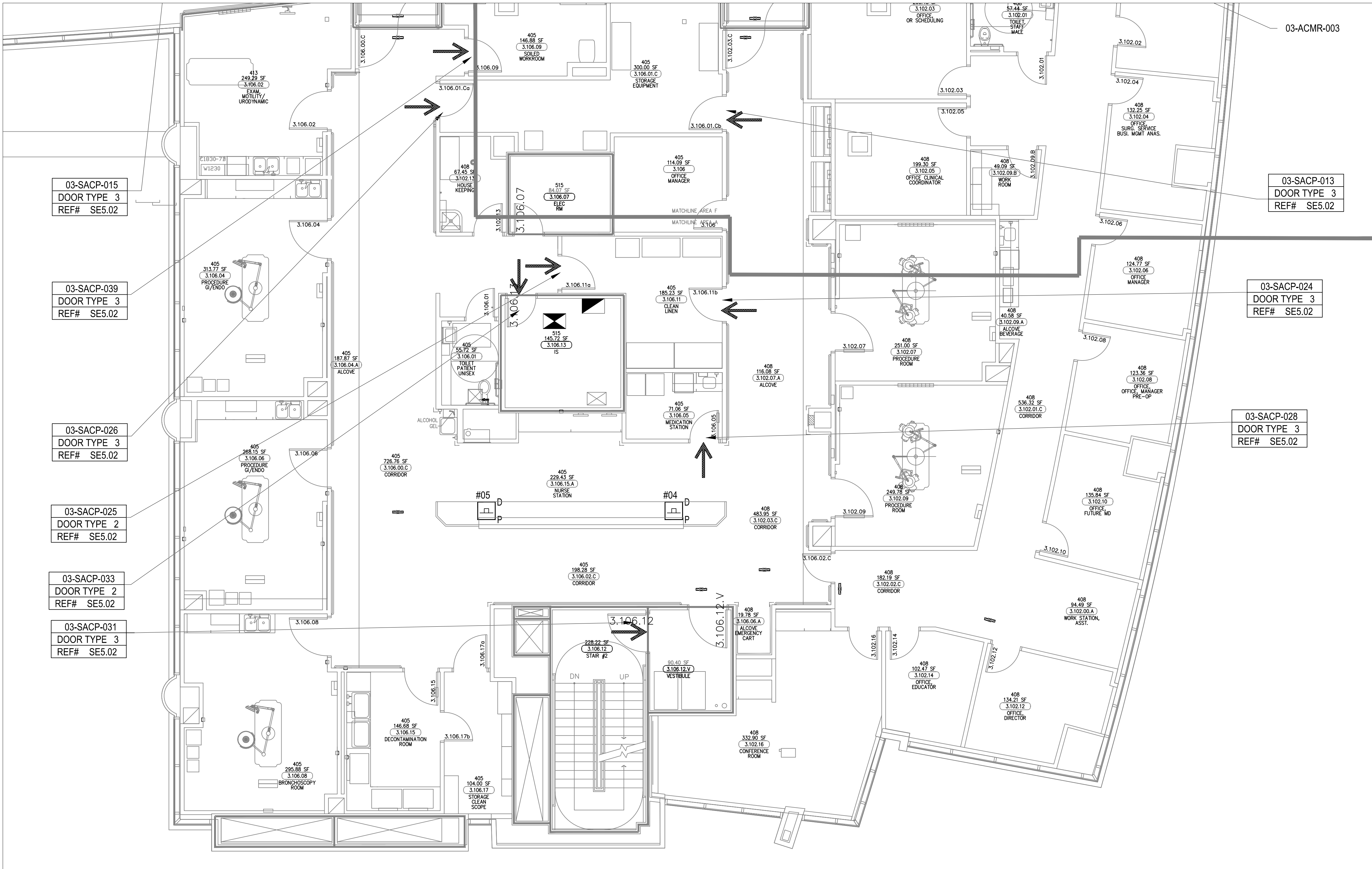
DEVICE	DESCRIPTION	QTY.
CR	CARD READER	7
DC	DOOR CONTACT	7
REX	REQUEST TO EXIT DEVICE W/ DOOR LOCKS	7
EL	ELECTRIFIED LOCK	7
IB	PANIC BUTTON	2
IC	INTERCOMS	0
ICD	FIXED IP DOME COLOR CAMERA	0
ICDPTZ	PTZ IP DOME COLOR CAMERA	0
ACP	ACCESS CONTROL PANEL	1
CCTV	CCTV HEAD END LOCATIONS	1
PS	PENETRATION SLEEVES	0

### SECURITY DEVICE NOTES:

1) CARD READERS #13 & #15 ARE NOT INCLUDED  
IN DEVICE LEGEND ON THIS SHEET.

## ACCESS CONTROL W/ FIRE PROTECTION DOORS:

CARD READER #	DOOR #
CR-01	3.044
CR-03	3.083
CR-09	3.026
CR-31	3.106.12



ASBUILTS  
08/15/2012

**ASBUILTS**  
**08/15/2012**



DEVICE LEGEND

DEVICE	DESCRIPTION	QTY.
CR	CARD READER	3
DC	DOOR CONTACT	3
REX	REQUEST TO EXIT DEVICE W/ DOOR LOCKS	3
EL	ELECTRIFIED LOCK	3
P	PANIC BUTTON	2
S	INTERCOMS	0
IPD	FIXED IP DOME COLOR CAMERA	1
IPD	PTZ IP DOME COLOR CAMERA	0
ACP	ACCESS CONTROL PANEL	0
CCTV	CCTV HEAD END LOCATIONS	0
PS	PENETRATION SLEEVES	0

SECURITY DEVICE NOTES:

1) CARD READER #39 IS NOT INCLUDED IN DEVICE LEGEND ON THIS SHEET.

ACCESS CONTROL W/  
FIRE PROTECTION DOORS:

CARD READER #	DOOR #
CR-01	3.044
CR-03	3.083
CR-09	3.026
CR-31	3.106.12

DRAWING PREPARED BY:

**KRATOS**  
**HBE**

1511 E. ORANGETHORPE BLVD.  
FULLERTON, CALIFORNIA 92831  
714-525-4350 - o; 714-525-4386 - f  
(c) Copyright 2012 KRATOS | HBE  
All Rights Reserved.

MUST BE SIGNED BY HBE  
TO AUTHENTICATE CONTENT(S).  
ALL DETAILS CHECKED FOR ACCURACY.

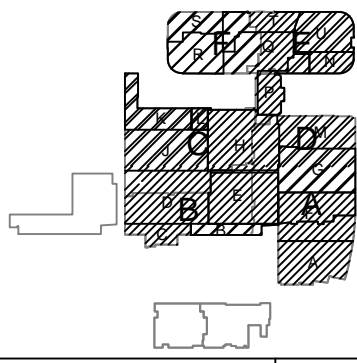
SIGNATURE \_\_\_\_\_ DATE \_\_\_\_\_

HBE JOB #

CONFIDENTIAL

THE INFORMATION CONTAINED HERIN MAY  
NOT BE USED OR REPRODUCED IN ANY  
MANNER WITHOUT WRITTEN PERMISSION OF  
KRATOS | HBE.

KEY PLAN



NO.	REV DESCRIPTION REV DATE	APPROVED BY
1.	AS BUILTS 08/15/2012	JOHN J. CHRISTIE

REV. DESCRIPTION APPROVED BY

CUSTOMER:

**CHOC**  
Children's Hospital  
of Orange County

PROJECT:

CHOC CHILDREN'S  
HOSPITAL  
455 SOUTH MAIN ST.  
ORANGE, CA 92668

DRAWING TITLE:

THIRD LEVEL  
SECURITY PLAN  
AREA E

DRN BY	DATE DRN	CHK BY	DATE CHK
JOSH G.	08/08/2012	JJC	
SCALE:	NTS		
DWG NO.	SE3.03E		

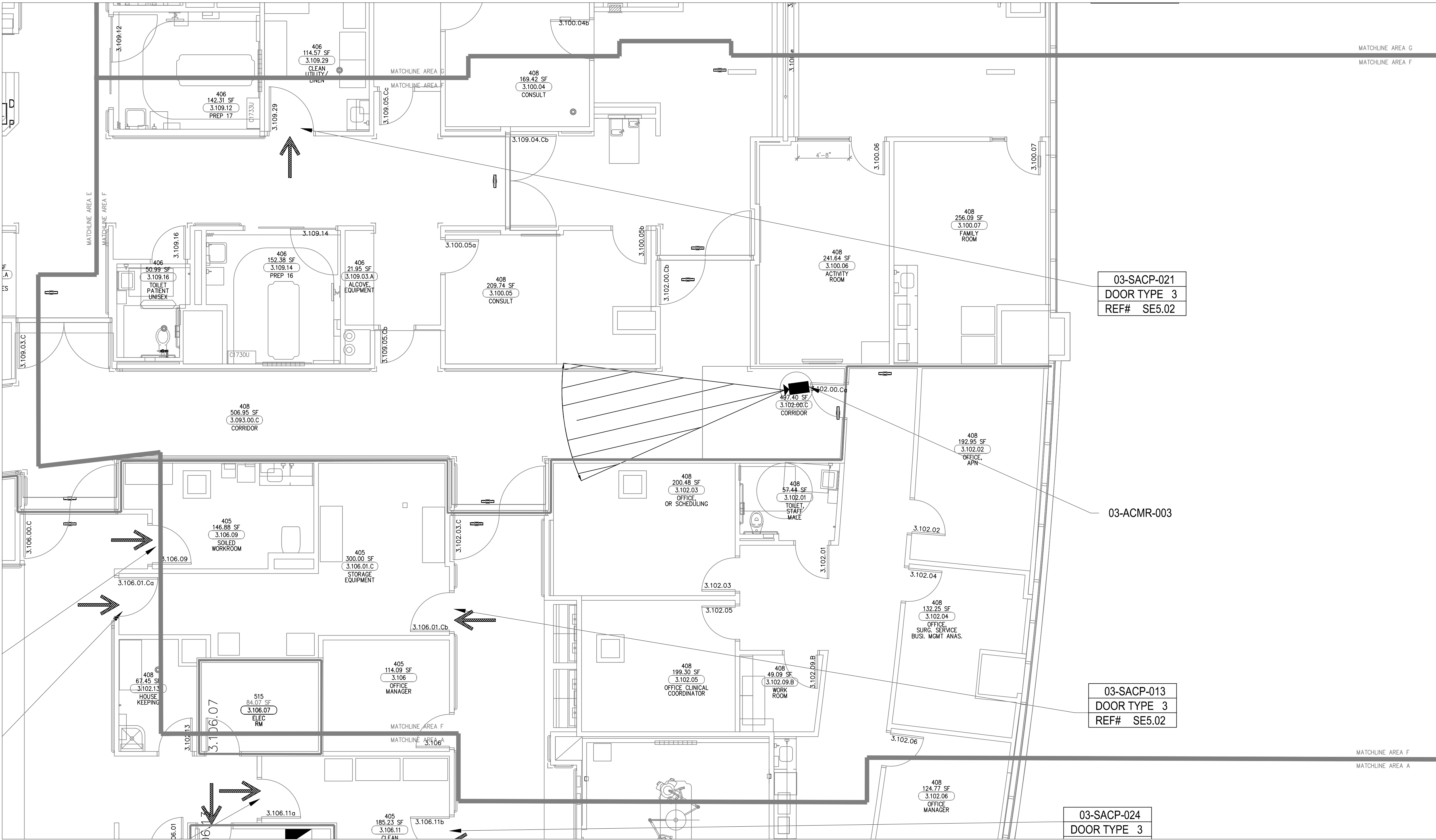
ASBUILTS  
08/15/2012

DEVICE LEGEND

DEVICE	DESCRIPTION	QTY.
CR	CARD READER	2
DC	DOOR CONTACT	2
REX	REQUEST TO EXIT DEVICE W/ DOOR LOCKS	2
EL	ELECTRIFIED LOCK	2
LB	PANIC BUTTON	0
IS	INTERCOMS	0
FC	FIXED IP DOME COLOR CAMERA	1
PTZ	PTZ IP DOME COLOR CAMERA	0
ACP	ACCESS CONTROL PANEL	0
CCTV	CCTV HEAD END LOCATIONS	0
PS	PENETRATION SLEEVES	0

ACCESS CONTROL W/  
FIRE PROTECTION DOORS:

CARD READER #	DOOR #
CR-01	3.044
CR-03	3.083
CR-09	3.026
CR-31	3.106.12



DRAWING PREPARED BY:



1511 E. ORANGETHORPE BLVD.  
FULLERTON, CALIFORNIA 92831  
714-525-4350 - o; 714-525-4386 - f  
(c) Copyright 2012 KRATOS | HBE  
All Rights Reserved.

MUST BE SIGNED BY HBE  
TO AUTHENTICATE CONTENT(S).  
ALL DETAILS CHECKED FOR ACCURACY.

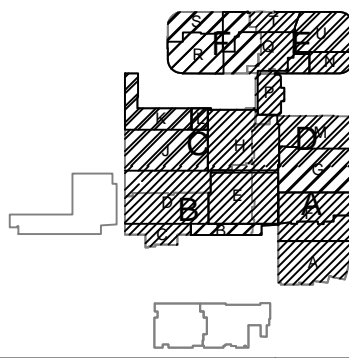
SIGNATURE \_\_\_\_\_ DATE \_\_\_\_\_

HBE JOB #

CONFIDENTIAL

THE INFORMATION CONTAINED HERIN MAY  
NOT BE USED OR REPRODUCED IN ANY  
MANNER WITHOUT WRITTEN PERMISSION OF  
KRATOS | HBE.

KEY PLAN



NO.	REV DESCRIPTION REV DATE	APPROVED BY
1.	AS BUILTS 08/15/2012	JOHN J. CHRISTIE

REV.	DESCRIPTION	APPROVED BY
------	-------------	-------------

CUSTOMER:



PROJECT:

CHOC CHILDREN'S  
HOSPITAL  
455 SOUTH MAIN ST.  
ORANGE, CA 92668

DRAWING TITLE:

THIRD LEVEL  
SECURITY PLAN  
AREA F

DRN BY JOSH G.	DATE DRN 08/08/2012	CHK BY JJC	DATE CHK
SCALE:	NTS		
DWG NO.	SE3.03F		

ASBUILTS  
08/15/2012

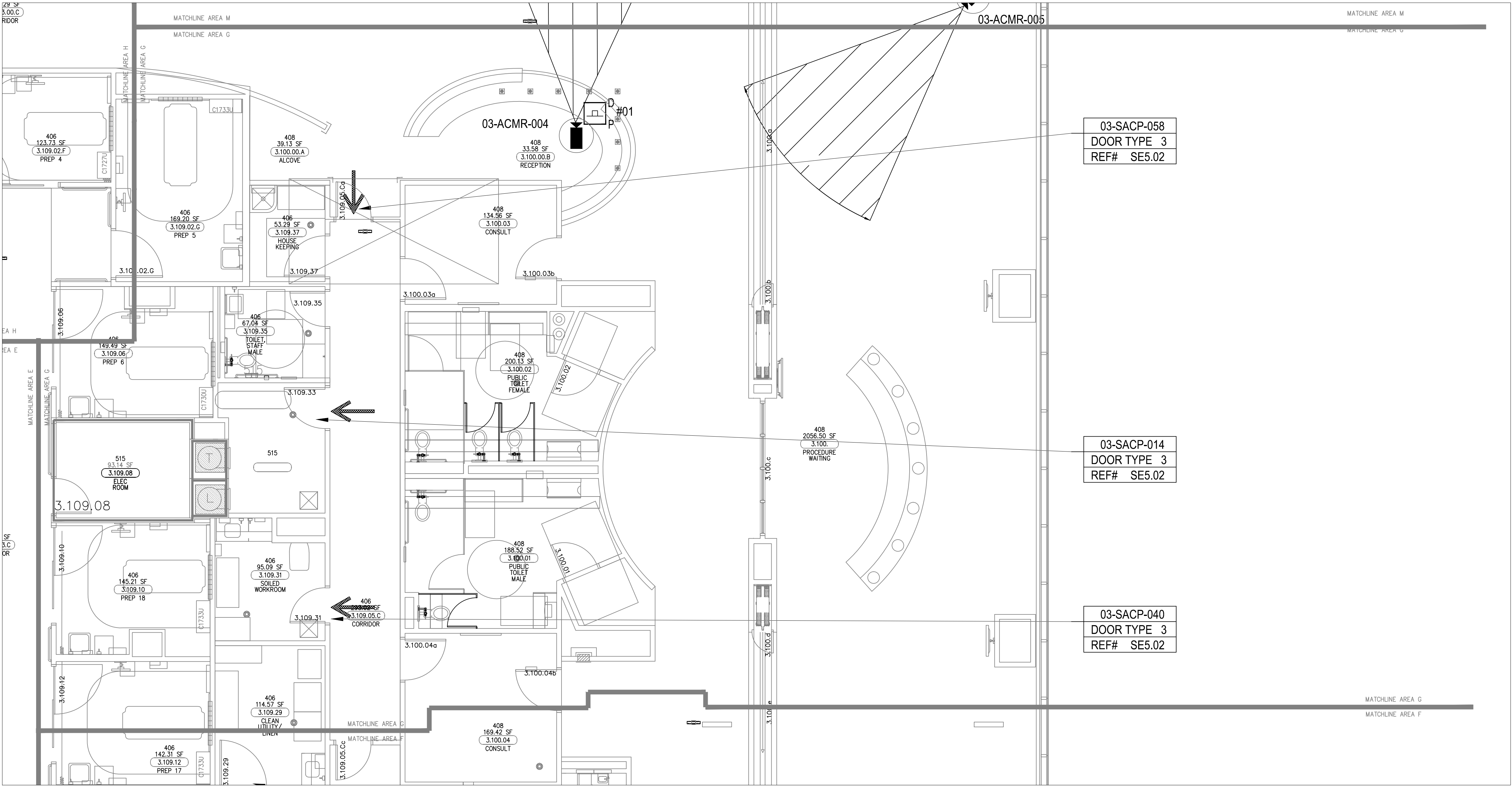
DEVICE LEGEND

DEVICE	DESCRIPTION	QTY.
CR	CARD READER	3
DC	DOOR CONTACT	3
REX	REQUEST TO EXIT DEVICE W/ DOOR LOCKS	3
EL	ELECTRIFIED LOCK	3
IB	PANIC BUTTON	1
IS	INTERCOMS	0
IC	FIXED IP DOME COLOR CAMERA	1
IPC	PTZ IP DOME COLOR CAMERA	0
ACP	ACCESS CONTROL PANEL	0
CCTV	CCTV HEAD END LOCATIONS	0
PS	PENETRATION SLEEVES	0

SECURITY DEVICE NOTES:  
1) CAMERA #005 IS NOT INCLUDED  
IN DEVICE LEGEND ON THIS SHEET.

ACCESS CONTROL W/  
FIRE PROTECTION DOORS:

CARD READER #	DOOR #
CR-01	3.044
CR-03	3.083
CR-09	3.026
CR-31	3.106.12



DRAWING PREPARED BY:



1511 E. ORANGETHORPE BLVD.  
FULLERTON, CALIFORNIA 92831  
714-525-4350 - o; 714-525-4386 - f  
(c) Copyright 2012 KRATOS | HBE  
All Rights Reserved.

MUST BE SIGNED BY HBE  
TO AUTHENTICATE CONTENT(S).  
ALL DETAILS CHECKED FOR ACCURACY.

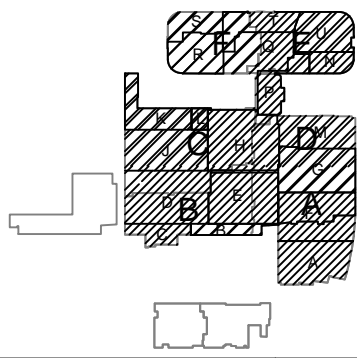
SIGNATURE \_\_\_\_\_ DATE \_\_\_\_\_

HBE JOB #

CONFIDENTIAL

THE INFORMATION CONTAINED HERIN MAY  
NOT BE USED OR REPRODUCED IN ANY  
MANNER WITHOUT WRITTEN PERMISSION OF  
KRATOS | HBE.

KEY PLAN



NO.	REV DESCRIPTION REV DATE	APPROVED BY
1.	AS BUILTS 08/15/2012	JOHN J. CHRISTIE

REV.	DESCRIPTION	APPROVED BY
------	-------------	-------------

CUSTOMER:



PROJECT:

CHOC CHILDREN'S  
HOSPITAL  
455 SOUTH MAIN ST.  
ORANGE, CA 92668

DRAWING TITLE:

THIRD LEVEL  
SECURITY PLAN  
AREA G

DRN BY	DATE DRN	CHK BY	DATE CHK
JOSH G.	08/08/2012	JJC	
SCALE:	NTS		
DWG NO.	SE3.03G		

ASBUILTS  
08/15/2012

DRAWING PREPARED BY:



1511 E. ORANGETHORPE BLVD.  
FULLERTON, CALIFORNIA 92831  
714-525-4350 - o; 714-525-4386 - f  
(c) Copyright 2012 KRATOS | HBE  
All Rights Reserved.

MUST BE SIGNED BY HBE  
TO AUTHENTICATE CONTENT(S).  
ALL DETAILS CHECKED FOR ACCURACY.

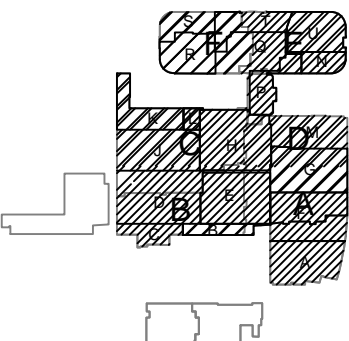
SIGNATURE DATE

HBE JOB #

CONFIDENTIAL

THE INFORMATION CONTAINED HEREIN MAY  
NOT BE USED OR REPRODUCED IN ANY  
MANNER WITHOUT WRITTEN PERMISSION OF  
KRATOS | HBE.

KEY PLAN



NO.	REV DESCRIPTION REV DATE	APPROVED BY
1.	AS BUILTS 08/15/2012	JOHN J. CHRISTIE

REV. DESCRIPTION APPROVED BY

CUSTOMER:



PROJECT:  
CHOC CHILDREN'S  
HOSPITAL  
455 SOUTH MAIN ST.  
ORANGE, CA 92668

DRAWING TITLE:  
THIRD LEVEL  
SECURITY PLAN  
AREA H

DRN BY	DATE DRN	CHK BY	DATE CHK
JOSH G.	08/08/2012	JJC	
SCALE:	NTS		
DWG NO.	SE3.03H		

DEVICE LEGEND

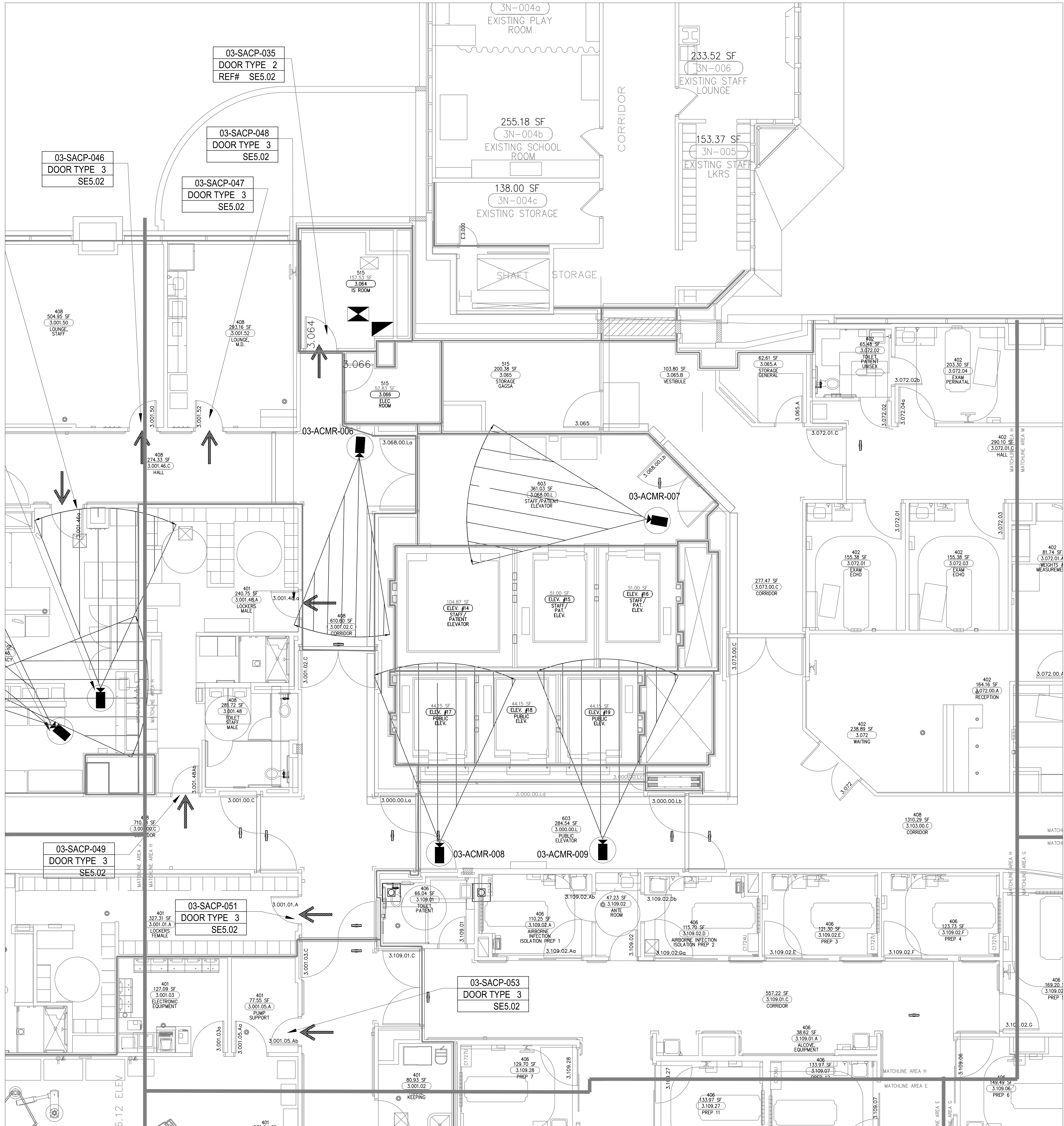
DEVICE	DESCRIPTION	QTY.
CR	CARD READER	6
DC	DOOR CONTACT	6
REX	REQUEST TO EXIT DEVICE W/ DOOR LOCKS	6
EL	ELECTRIFIED LOCK	6
IB	PANIC BUTTON	0
IS	INTERCOMS	0
FC	FIXED IP DOME COLOR CAMERA	4
PTZ	PTZ IP DOME COLOR CAMERA	0
ACP	ACCESS CONTROL PANEL	1
CCTV	CCTV HEAD END LOCATIONS	1
PS	PENETRATION SLEEVES	0

SECURITY DEVICE NOTES:

1) CARD READER #46 IS NOT INCLUDED  
IN DEVICE LEGEND ON THIS SHEET.

ACCESS CONTROL W/  
FIRE PROTECTION DOORS:

CARD READER #	DOOR #
CR-01	3.044
CR-03	3.083
CR-09	3.026
CR-31	3.106.12



ASBUILTS  
08/15/2012

DEVICE LEGEND

DEVICE	DESCRIPTION	QTY.
CR	CARD READER	4
DC	DOOR CONTACT	5
REX	REQUEST TO EXIT DEVICE W/ DOOR LOCKS	4
EL	ELECTRIFIED LOCK	4
P	PANIC BUTTON	1
IS	INTERCOMS	0
FC	FIXED IP DOME COLOR CAMERA	0
PTZ	PTZ IP DOME COLOR CAMERA	0
ACP	ACCESS CONTROL PANEL	0
CHL	CCTV HEAD END LOCATIONS	0
PS	PENETRATION SLEEVES	0

SECURITY DEVICE NOTES:

1) CARD READER #49 IS NOT INCLUDED IN DEVICE LEGEND ON THIS SHEET.

ACCESS CONTROL W/  
FIRE PROTECTION DOORS:

CARD READER #	DOOR #
CR-01	3.044
CR-03	3.083
CR-09	3.026
CR-31	3.106.12

DRAWING PREPARED BY:

**KRATOS**  
**HBE**

1511 E. ORANGETHORPE BLVD.  
FULLERTON, CALIFORNIA 92831  
714-525-4350 - o; 714-525-4386 - f  
(c) Copyright 2012 KRATOS | HBE  
All Rights Reserved.

MUST BE SIGNED BY HBE  
TO AUTHENTICATE CONTENT(S).  
ALL DETAILS CHECKED FOR ACCURACY.

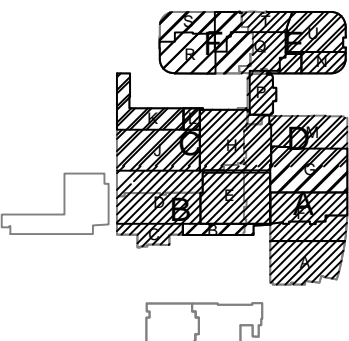
SIGNATURE \_\_\_\_\_ DATE \_\_\_\_\_

HBE JOB #

CONFIDENTIAL

THE INFORMATION CONTAINED HERIN MAY  
NOT BE USED OR REPRODUCED IN ANY  
MANNER WITHOUT WRITTEN PERMISSION OF  
KRATOS | HBE.

KEY PLAN



NO.	REV DESCRIPTION REV DATE	APPROVED BY
1.	AS BUILTS 08/15/2012	JOHN J. CHRISTIE

REV.	DESCRIPTION	APPROVED BY
------	-------------	-------------

CUSTOMER:

**CHOC**  
Children's Hospital  
of Orange County

PROJECT:

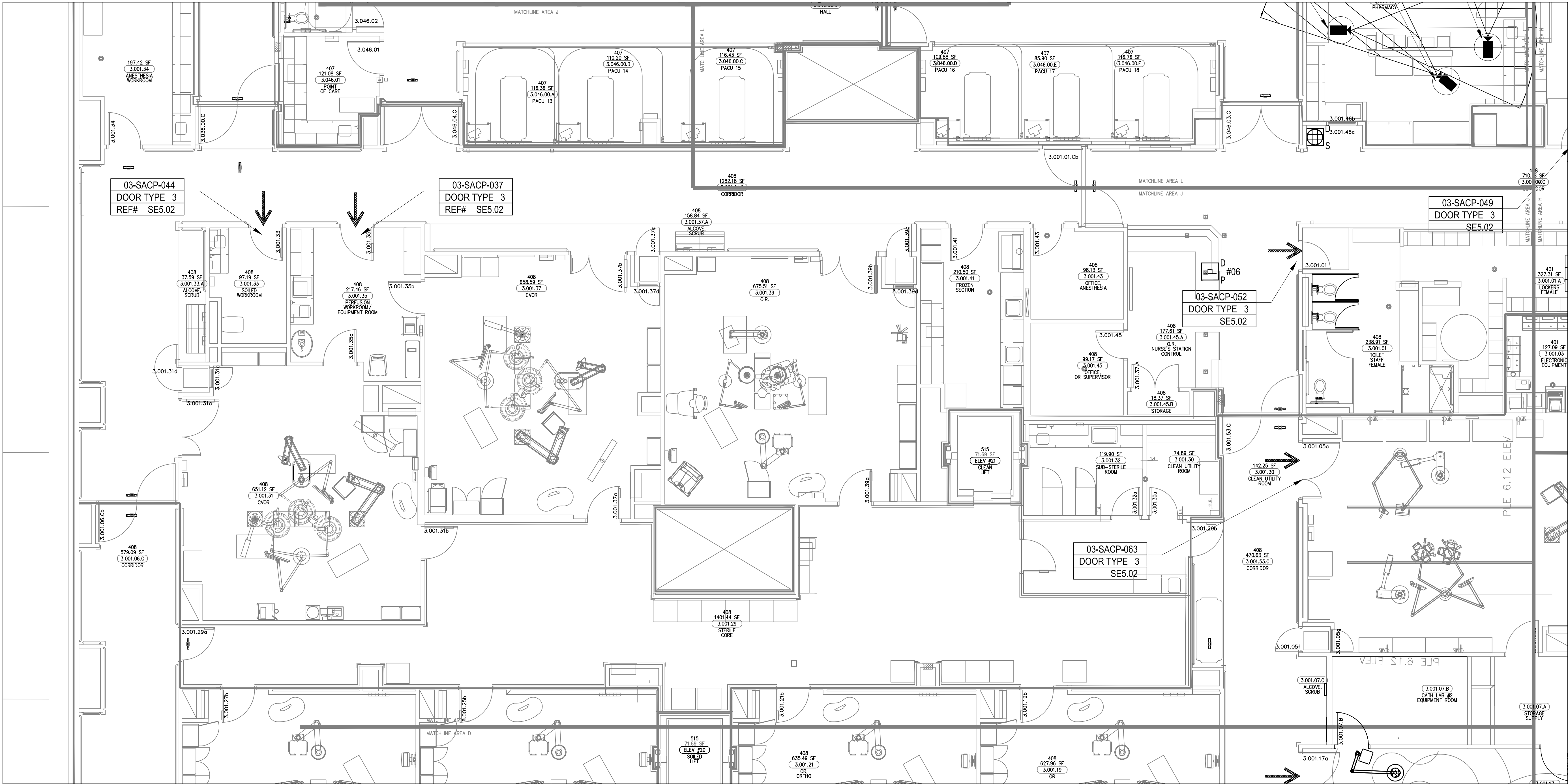
CHOC CHILDREN'S  
HOSPITAL  
455 SOUTH MAIN ST.  
ORANGE, CA 92668

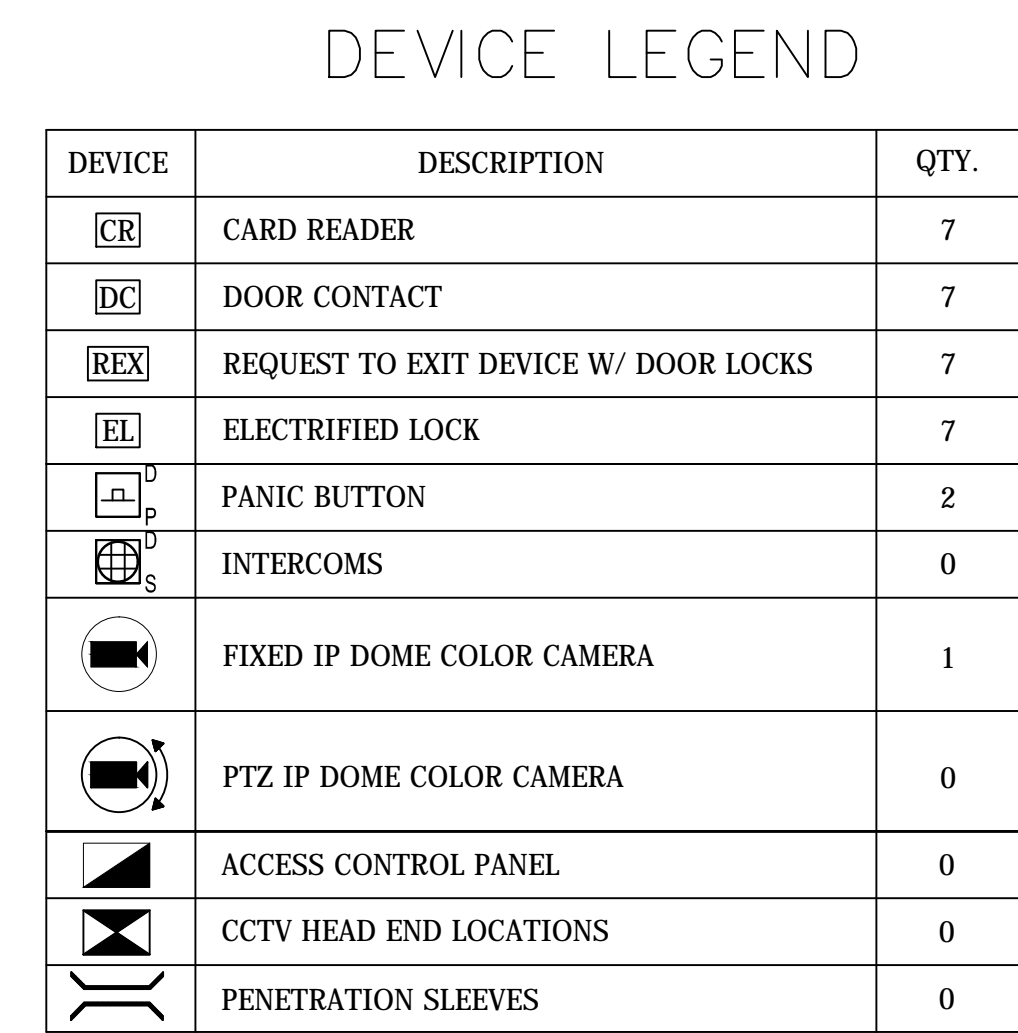
DRAWING TITLE:

THIRD LEVEL  
SECURITY PLAN  
AREA J

DRN BY	DATE DRN	CHK BY	DATE CHK
JOSH G.	08/08/2012	JJC	
SCALE:	NTS		
DWG NO.	SE3.03J		

**ASBUILTS**  
**08/15/2012**





<u>CARD READER #</u>	<u>DOOR #</u>
CR-01	3.044
CR-03	3.083
CR-09	3.026
CR-31	3.106.12

**ASBUILTS**  
**08/15/2012**

**KRATOS®**  
**HBE**

1511 E. ORANGETHORPE BLVD.  
FULLERTON, CALIFORNIA 92831  
714-525-4350 - o; 714-525-4386 - f  
(c) Copyright 2012 KRATOS | HBE  
All Rights Reserved.

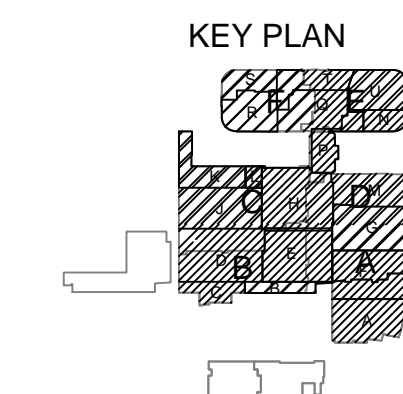
**MUST BE SIGNED BY HBE  
TO AUTHENTICATE CONTENT(S).  
ALL DETAILS CHECKED FOR ACCURACY.**

SIGNATURE \_\_\_\_\_ DATE \_\_\_\_\_

HBE JOB #

**CONFIDENTIAL**

THE INFORMATION CONTAINED HERIN MAY  
NOT BE USED OR REPRODUCED IN ANY  
MANNER WITHOUT WRITTEN PERMISSION OF  
KRATOS | HBE.



NO.	REV DESCRIPTION REV DATE	APPROVED BY
1.	AS BUILTS 08/15/2012	JOHN J. CHRISTIE

REV.	DESCRIPTION	APPROVED BY
------	-------------	-------------

CUSTOMER:

 **CHOC**<sup>SM</sup>  
Children's Hospital  
of Orange County

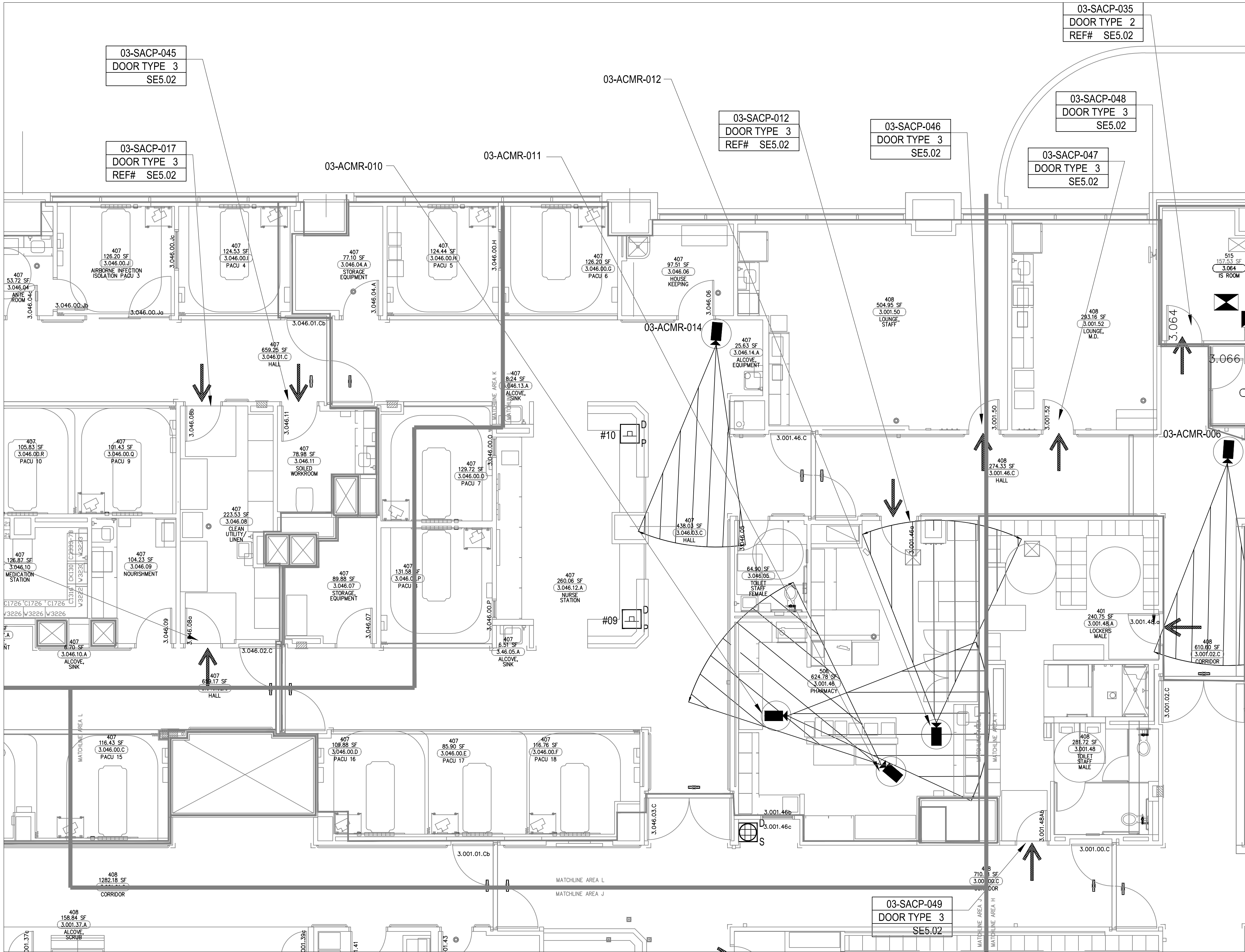
PROJECT:

CHOC CHILDREN'S  
HOSPITAL  
455 SOUTH MAIN ST.  
ORANGE, CA 92668

DRAWING TITLE:

THIRD LEVEL  
SECURITY PLAN  
AREA K

DRN BY	DATE DRN	CHK BY	DATE CHK
JOSH G.	08/08/2012	JJC	
SCALE:	NTS		
DWG NO.	SE3.03K		



DEVICE LEGEND

DEVICE	DESCRIPTION	QTY.
CR	CARD READER	2
DC	DOOR CONTACT	2
REX	REQUEST TO EXIT DEVICE W/ DOOR LOCKS	2
EL	ELECTRIFIED LOCK	2
IB	PANIC BUTTON	2
IS	INTERCOMS	1
ICD	FIXED IP DOME COLOR CAMERA	4
ICDPTZ	PTZ IP DOME COLOR CAMERA	0
ACP	ACCESS CONTROL PANEL	0
CCTV	CCTV HEAD END LOCATIONS	0
PS	PENETRATION SLEEVES	0

SECURITY DEVICE NOTES:  
1) CARD READERS #17, #45, #47, #49 & #52 ARE NOT INCLUDED IN THE DEVICE LEGEND ON THIS SHEET.

ACCESS CONTROL W/  
FIRE PROTECTION DOORS:

CARD READER #	DOOR #
CR-01	3.044
CR-03	3.083
CR-09	3.026
CR-31	3.106.12

DRAWING PREPARED BY:



1511 E. ORANGETHORPE BLVD.  
FULLERTON, CALIFORNIA 92831  
714-525-4350 - o; 714-525-4386 - f  
(c) Copyright 2012 KRATOS | HBE  
All Rights Reserved.

MUST BE SIGNED BY HBE  
TO AUTHENTICATE CONTENT(S).  
ALL DETAILS CHECKED FOR ACCURACY.

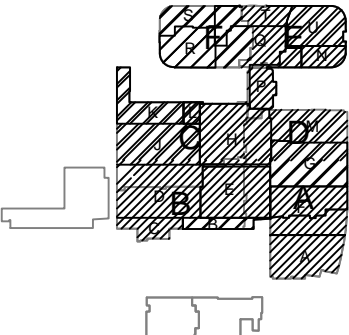
SIGNATURE \_\_\_\_\_ DATE \_\_\_\_\_

HBE JOB #

CONFIDENTIAL

THE INFORMATION CONTAINED HERIN MAY  
NOT BE USED OR REPRODUCED IN ANY  
MANNER WITHOUT WRITTEN PERMISSION OF  
KRATOS | HBE.

KEY PLAN



NO.	REV DESCRIPTION REV DATE	APPROVED BY
1.	AS BUILTS 08/15/2012	JOHN J. CHRISTIE

REV.	DESCRIPTION	APPROVED BY
------	-------------	-------------

CUSTOMER:



PROJECT:

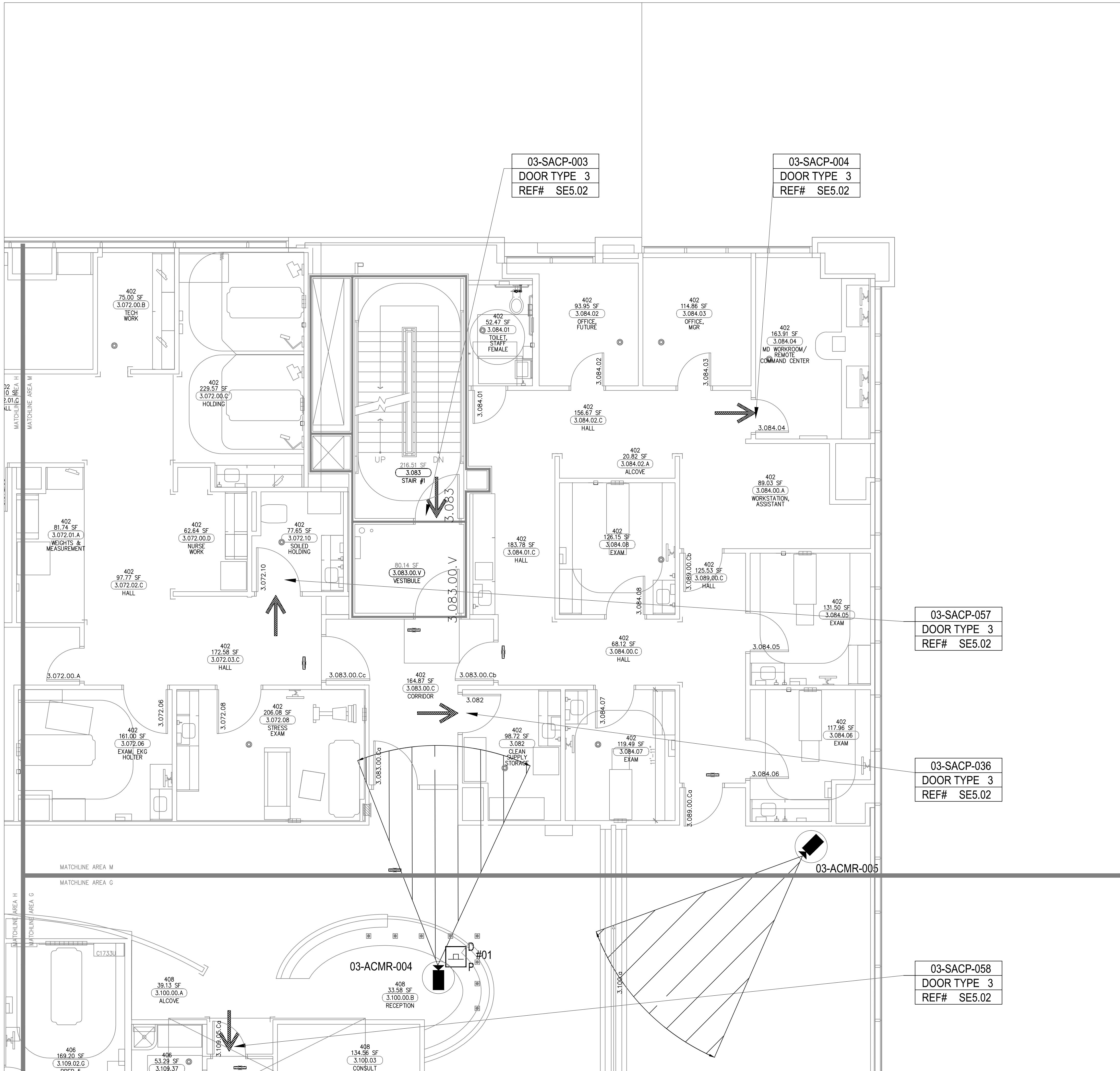
CHOC CHILDREN'S  
HOSPITAL  
455 SOUTH MAIN ST.  
ORANGE, CA 92668

DRAWING TITLE:

THIRD LEVEL  
SECURITY PLAN  
AREA L

DRN BY	DATE DRN	CHK BY	DATE CHK
JOSH G.	08/08/2012	JJC	
SCALE:	NTS		
DWG NO.	SE3.03L		

ASBUILTS  
08/15/2012



DEVICE LEGEND

DEVICE	DESCRIPTION	QTY.
CR	CARD READER	4
DC	DOOR CONTACT	4
REX	REQUEST TO EXIT DEVICE W/ DOOR LOCKS	4
EL	ELECTRIFIED LOCK	4
IB	PANIC BUTTON	4
IS	INTERCOMS	0
IC	FIXED IP DOME COLOR CAMERA	1
IPC	PTZ IP DOME COLOR CAMERA	0
ACP	ACCESS CONTROL PANEL	0
CCTV	CCTV HEAD END LOCATIONS	0
PS	PENETRATION SLEEVES	0

SECURITY DEVICE NOTES:  
1) CARD READER #59 IS NOT INCLUDED  
IN THE DEVICE LEGEND ON THIS SHEET.

ACCESS CONTROL W/  
FIRE PROTECTION DOORS:

CARD READER #	DOOR #
CR-01	3.044
CR-03	3.083
CR-09	3.026
CR-31	3.106.12

DRAWING PREPARED BY:



1511 E. ORANGETHORPE BLVD.  
FULLERTON, CALIFORNIA 92831  
714-525-4350 - o; 714-525-4386 - f  
(c) Copyright 2012 KRATOS | HBE  
All Rights Reserved.

MUST BE SIGNED BY HBE  
TO AUTHENTICATE CONTENT(S).  
ALL DETAILS CHECKED FOR ACCURACY.

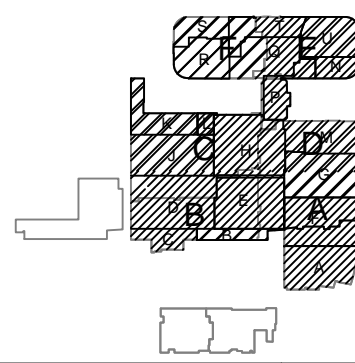
SIGNATURE \_\_\_\_\_ DATE \_\_\_\_\_

HBE JOB #

CONFIDENTIAL

THE INFORMATION CONTAINED HERIN MAY  
NOT BE USED OR REPRODUCED IN ANY  
MANNER WITHOUT WRITTEN PERMISSION OF  
KRATOS | HBE.

KEY PLAN



NO.	REV DESCRIPTION REV DATE	APPROVED BY
1.	AS BUILTS 08/15/2012	JOHN J. CHRISTIE

REV.	DESCRIPTION	APPROVED BY
------	-------------	-------------

CUSTOMER:



PROJECT:

CHOC CHILDREN'S  
HOSPITAL  
455 SOUTH MAIN ST.  
ORANGE, CA 92668

DRAWING TITLE:

THIRD LEVEL  
SECURITY PLAN  
AREA M

DRN BY	DATE DRN	CHK BY	DATE CHK
JOSH G.	08/08/2012	JJC	
SCALE:	NTS		
DWG NO.	SE3.03M		

ASBUILTS  
08/15/2012