



DEVICE LEGEND		
DEVICE	DESCRIPTION	QTY.
CR	CARD READER	37
DC	DOOR CONTACT	37
REX	REQUEST TO EXIT DEVICE W/ DOOR LOCKS	37
EL	ELECTRIFIED LOCK	37
PA	PANIC BUTTON	1
IC	INTERCOMS	2
IPD	FIXED IP DOME COLOR CAMERA	20
ACP	ACCESS CONTROL PANEL	3
CCTV	CCTV HEAD END LOCATIONS	2
PS	PENETRATION SLEEVES	6

ACCESS CONTROL W/ FIRE PROTECTION DOORS:	
CARD READER #	DOOR #
CR-01	B.070.00.Cb
CR-02	B.032 - STAIR #4
CR-18	B.032 - STAIR #3
CR-25	B.096.A - STAIR #6
CR-26	B.096b - STAIR #2
CR-31	B.083.00.Vb - STAIR #1 VESTIBULE
CR-32	B.083 - STAIR #1

DRAWING PREPARED BY:  
**KRATOS HBE**  
1511 E. ORANGETHORPE BLVD.  
FULLERTON, CALIFORNIA 92831  
714-525-4350 - o; 714-525-4386 - f  
(c) Copyright 2012 KRATOS | HBE  
All Rights Reserved.

MUST BE SIGNED BY HBE  
TO AUTHENTICATE CONTENT(S).  
ALL DETAILS CHECKED FOR ACCURACY.

SIGNATURE \_\_\_\_\_ DATE \_\_\_\_\_

HBE JOB # \_\_\_\_\_

CONFIDENTIAL  
THE INFORMATION CONTAINED HEREIN MAY  
NOT BE USED OR REPRODUCED IN ANY  
MANNER WITHOUT WRITTEN PERMISSION OF  
KRATOS | HBE.

KEY PLAN

NO.	REV DESCRIPTION REV DATE	APPROVED BY
1.	AS BUILTS 08/15/2012	JOHN J. CHRISTIE

REV.	DESCRIPTION	APPROVED BY
CUSTOMER:	 CHOC Children's Hospital of Orange County	

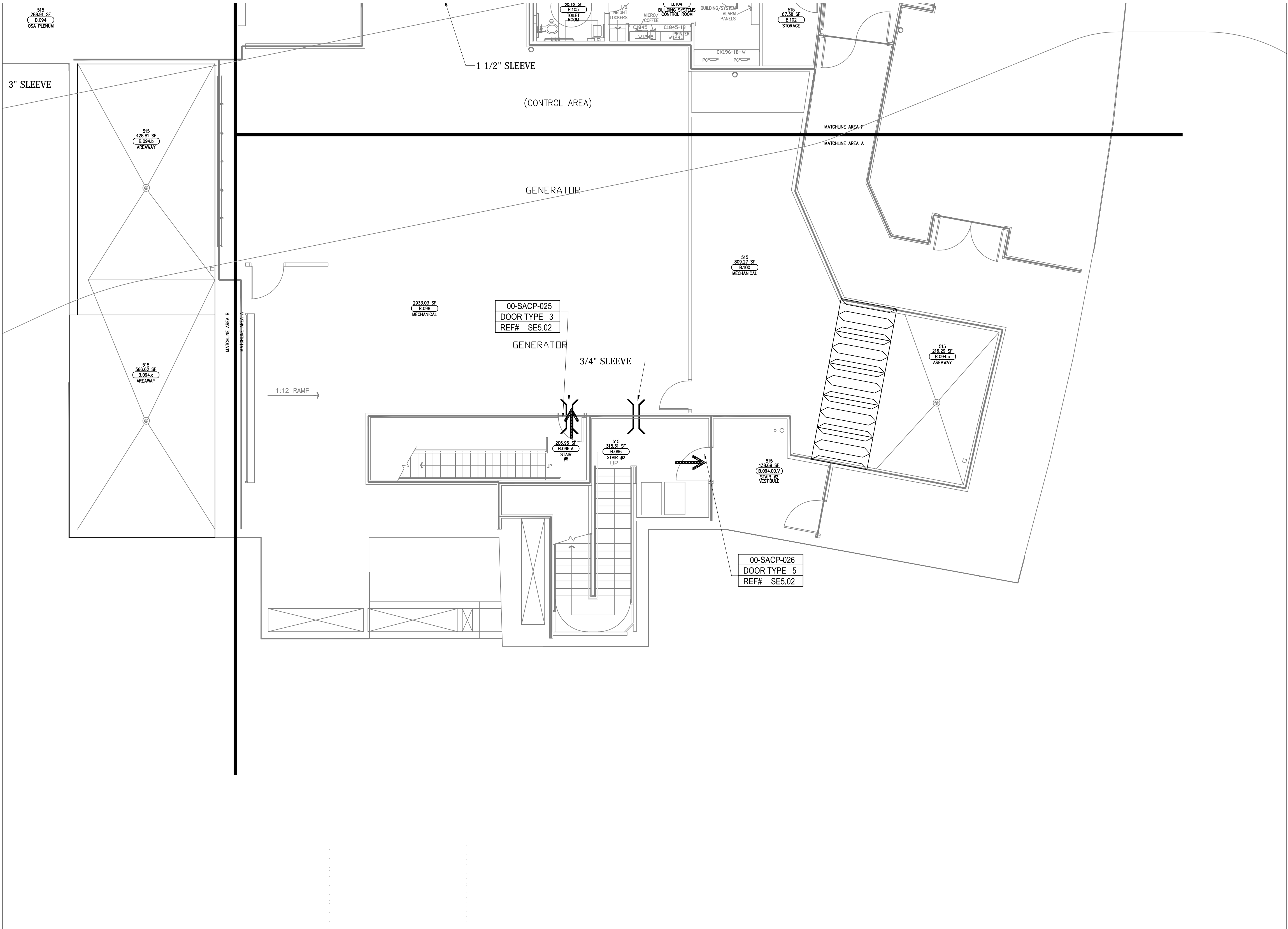
PROJECT:  
CHOC CHILDREN'S  
HOSPITAL  
455 SOUTH MAIN ST.  
ORANGE, CA 92668

DRAWING TITLE:  
LOWER LEVEL  
SECURITY PLAN

DRN BY	DATE DRN	CHK BY	DATE CHK
JOSH G.	08/08/2012	JJC	
SCALE:	NTS		
DWG NO.	SE3.00		

ASBUILTS  
08/15/2012





DEVICE LEGEND		
DEVICE	DESCRIPTION	QTY.
CR	CARD READER	02
DC	DOOR CONTACT	02
REX	REQUEST TO EXIT DEVICE W/ DOOR LOCKS	02
EL	ELECTRIFIED LOCK	02
PB	PANIC BUTTON	0
IC	INTERCOMS	0
IPDC	FIXED IP DOME COLOR CAMERA	0
ACP	ACCESS CONTROL PANEL	0
CCTV	CCTV HEAD END LOCATIONS	0
PS	PENETRATION SLEEVES	2

ACCESS CONTROL W/ FIRE PROTECTION DOORS:	
CARD READER #	DOOR #
CR-01	B.070.00.Cb
CR-02	B.052 - STAIR #4
CR-18	B.032 - STAIR #3
CR-25	B.096.A - STAIR #6
CR-26	B.096 - STAIR #2
CR-31	B.083.00.V - STAIR #1 VESTIBULE
CR-32	B.083 - STAIR #1

DRAWING PREPARED BY:

1511 E. ORANGETHORPE BLVD.  
FULLERTON, CALIFORNIA 92831  
714-525-4350 - o; 714-525-4386 - f  
(c) Copyright 2012 KRATOS | HBE  
All Rights Reserved.

MUST BE SIGNED BY HBE  
TO AUTHENTICATE CONTENT(S).  
ALL DETAILS CHECKED FOR ACCURACY.

SIGNATURE \_\_\_\_\_ DATE \_\_\_\_\_

HBE JOB # \_\_\_\_\_

CONFIDENTIAL

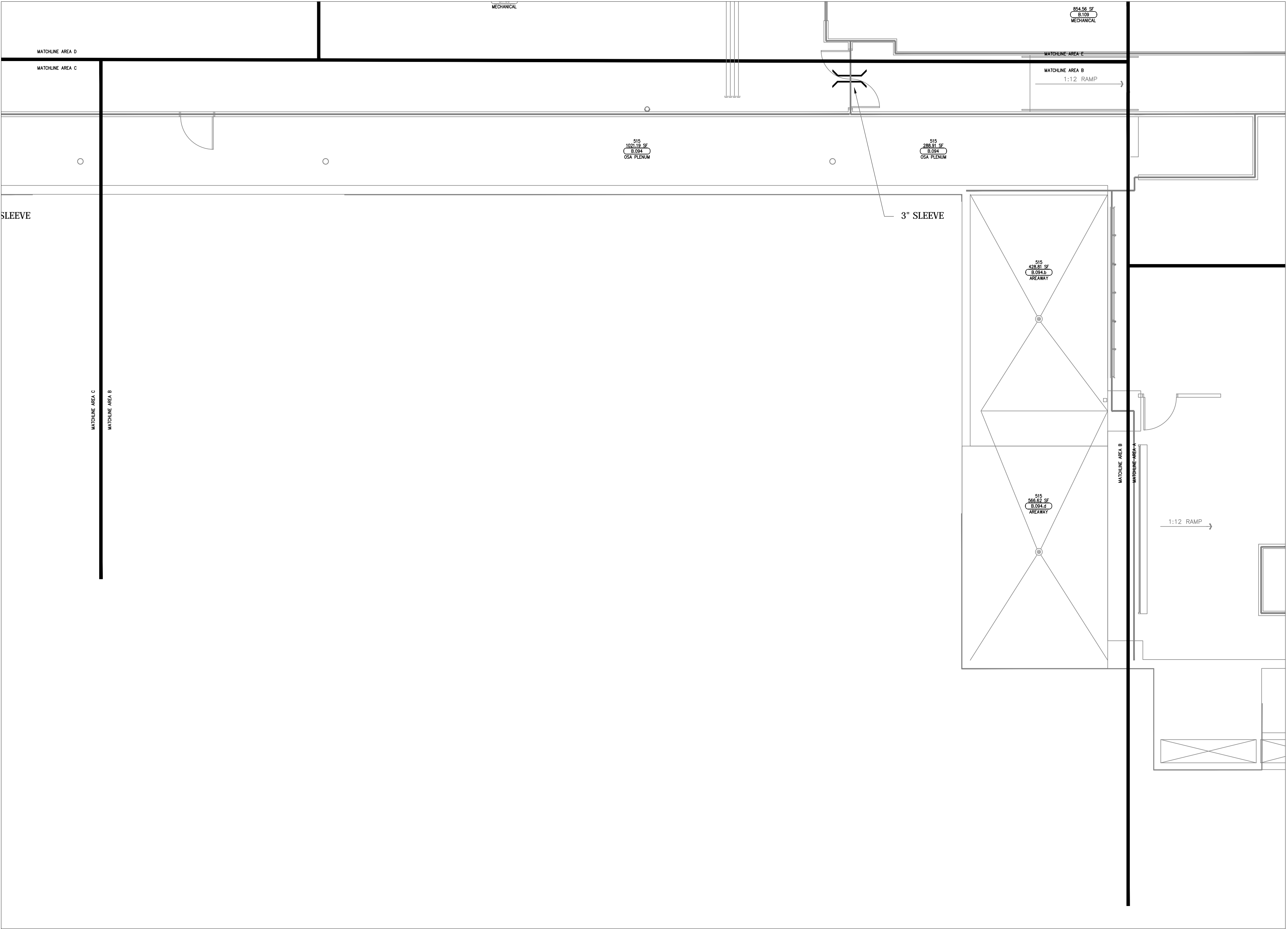
THE INFORMATION CONTAINED HERIN MAY  
NOT BE USED OR REPRODUCED IN ANY  
MANNER WITHOUT WRITTEN PERMISSION OF  
KRATOS | HBE.

KEY PLAN

NO.	REV DESCRIPTION REV DATE	APPROVED BY
1.	AS BUILTS 08/15/2012	JOHN J. CHRISTIE

REV.	DESCRIPTION	APPROVED BY	
CUSTOMER:			
PROJECT:			
CHOC CHILDREN'S HOSPITAL 455 SOUTH MAIN ST. ORANGE, CA 92668			
DRAWING TITLE:			
LOWER LEVEL SECURITY PLAN AREA - A			
DRN BY	DATE DRN	CHK BY	DATE CHK
JOSH G.	08/08/2012	JJC	
SCALE:	NTS		
DWG NO.	SE3.00A		

ASBUILTS  
08/15/2012



DEVICE LEGEND		
DEVICE	DESCRIPTION	QTY.
	CARD READER	0
	DOOR CONTACT	0
	REQUEST TO EXIT DEVICE W/ DOOR LOCKS	0
	ELECTRIFIED LOCK	0
	PANIC BUTTON	0
	INTERCOMS	0
	FIXED IP DOME COLOR CAMERA	0
	ACCESS CONTROL PANEL	0
	CCTV HEAD END LOCATIONS	0
	PENETRATION SLEEVES	1

ACCESS CONTROL W/  
FIRE PROTECTION DOORS:

CARD READER #	DOOR #
CR-01	B.070.00.Cb
CR-02	B.052 - STAIR #4
CR-18	B.032 - STAIR #3
CR-25	B.096.A - STAIR #6
CR-26	B.096 - STAIR #2
CR-31	B.083.00.V - STAIR #1 VESTIBULE
CR-32	B.083 - STAIR #1

DRAWING PREPARED BY:



1511 E. ORANGETHORPE BLVD.  
FULLERTON, CALIFORNIA 92831  
714-525-4350 - o; 714-525-4386 - f  
(c) Copyright 2012 KRATOS | HBE  
All Rights Reserved.

MUST BE SIGNED BY HBE  
TO AUTHENTICATE CONTENT(S).  
ALL DETAILS CHECKED FOR ACCURACY.

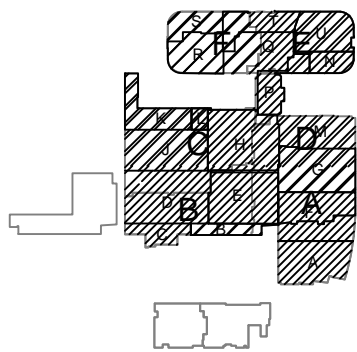
SIGNATURE \_\_\_\_\_ DATE \_\_\_\_\_

HBE JOB #

CONFIDENTIAL

THE INFORMATION CONTAINED HERIN MAY  
NOT BE USED OR REPRODUCED IN ANY  
MANNER WITHOUT WRITTEN PERMISSION OF  
KRATOS | HBE.

KEY PLAN



NO.	REV DESCRIPTION REV DATE	APPROVED BY
1.	AS BUILTS 08/15/2012	JOHN J. CHRISTIE

REV.	DESCRIPTION	APPROVED BY
------	-------------	-------------

CUSTOMER:

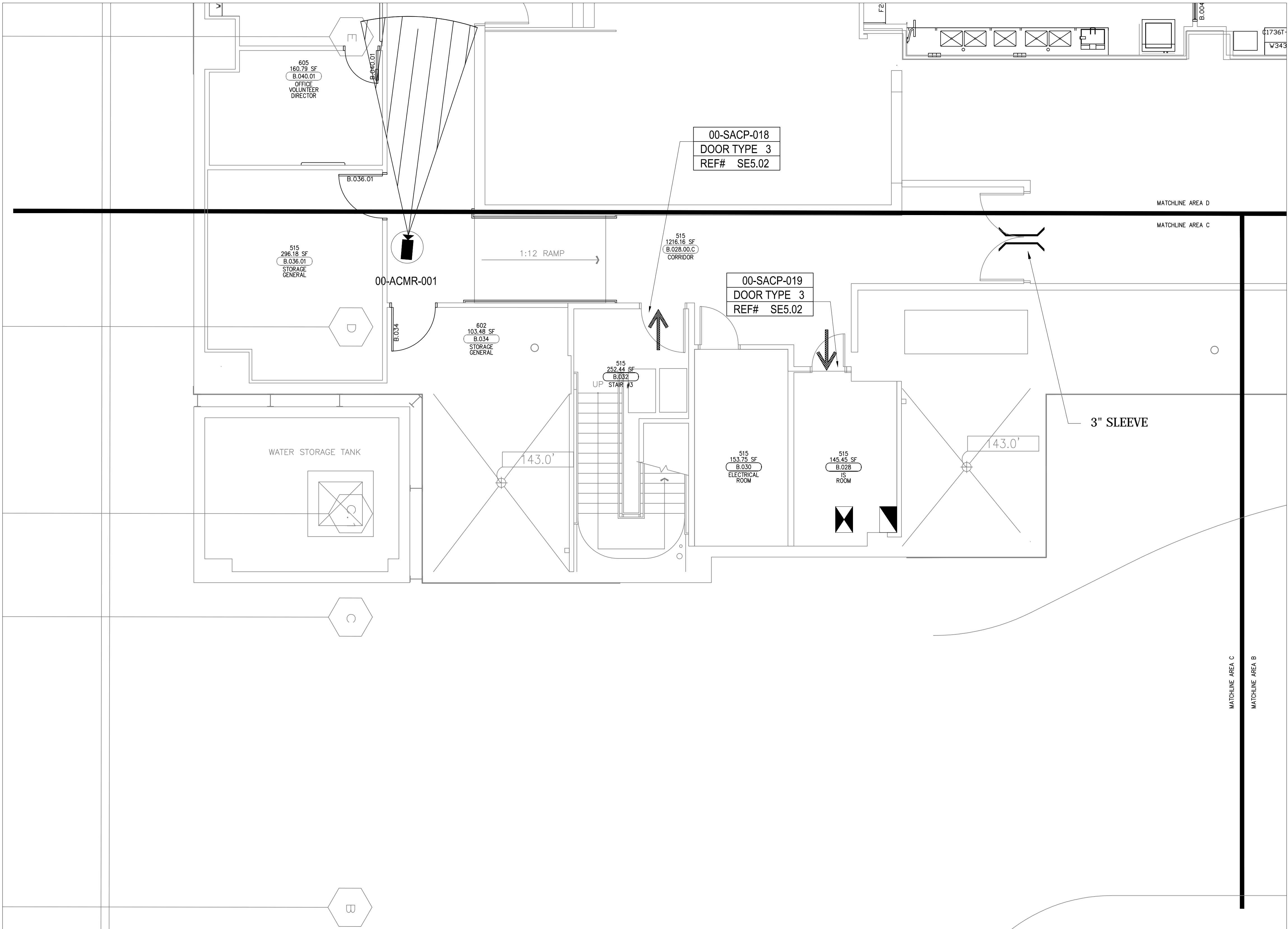


PROJECT:  
CHOC CHILDREN'S  
HOSPITAL  
455 SOUTH MAIN ST.  
ORANGE, CA 92668

DRAWING TITLE:  
LOWER LEVEL  
SECURITY PLAN AREA - B

DRN BY	DATE DRN	CHK BY	DATE CHK
JOSH G.	08/08/2012	JJC	
SCALE:	NTS		
DWG NO.	SE3.00B		

ASBUILTS  
08/15/2012



DEVICE LEGEND		
DEVICE	DESCRIPTION	QTY.
CR	CARD READER	02
DC	DOOR CONTACT	02
REX	REQUEST TO EXIT DEVICE W/ DOOR LOCKS	02
EL	ELECTRIFIED LOCK	02
PB	PANIC BUTTON	0
IC	INTERCOMS	0
FIC	FIXED IP DOME COLOR CAMERA	1
ACP	ACCESS CONTROL PANEL	2
CCTV	CCTV HEAD END LOCATIONS	1
PS	PENETRATION SLEEVES	1

ACCESS CONTROL W/ FIRE PROTECTION DOORS:	
CARD READER #	DOOR #
CR-01	B.070.00.Cb
CR-02	B.052 - STAIR #4
CR-18	B.032 - STAIR #3
CR-25	B.096.A - STAIR #6
CR-26	B.096 - STAIR #2
CR-31	B.083.00.V - STAIR #1 VESTIBULE
CR-32	B.083 - STAIR #1

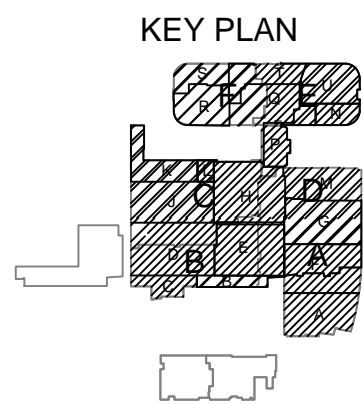
DRAWING PREPARED BY:  
**KRATOS**  
**HBE**  
1511 E. ORANGETHORPE BLVD.  
FULLERTON, CALIFORNIA 92831  
714-525-4350 - o; 714-525-4386 - f  
(c) Copyright 2012 KRATOS | HBE  
All Rights Reserved.

MUST BE SIGNED BY HBE  
TO AUTHENTICATE CONTENT(S).  
ALL DETAILS CHECKED FOR ACCURACY.

SIGNATURE \_\_\_\_\_ DATE \_\_\_\_\_

HBE JOB # \_\_\_\_\_

**CONFIDENTIAL**  
THE INFORMATION CONTAINED HERIN MAY  
NOT BE USED OR REPRODUCED IN ANY  
MANNER WITHOUT WRITTEN PERMISSION OF  
KRATOS | HBE.



NO.	REV DESCRIPTION REV DATE	APPROVED BY
1.	AS BUILTS 08/15/2012	JOHN J. CHRISTIE

REV.	DESCRIPTION	APPROVED BY
------	-------------	-------------

CUSTOMER:  
**CHOC**  
Children's Hospital  
of Orange County

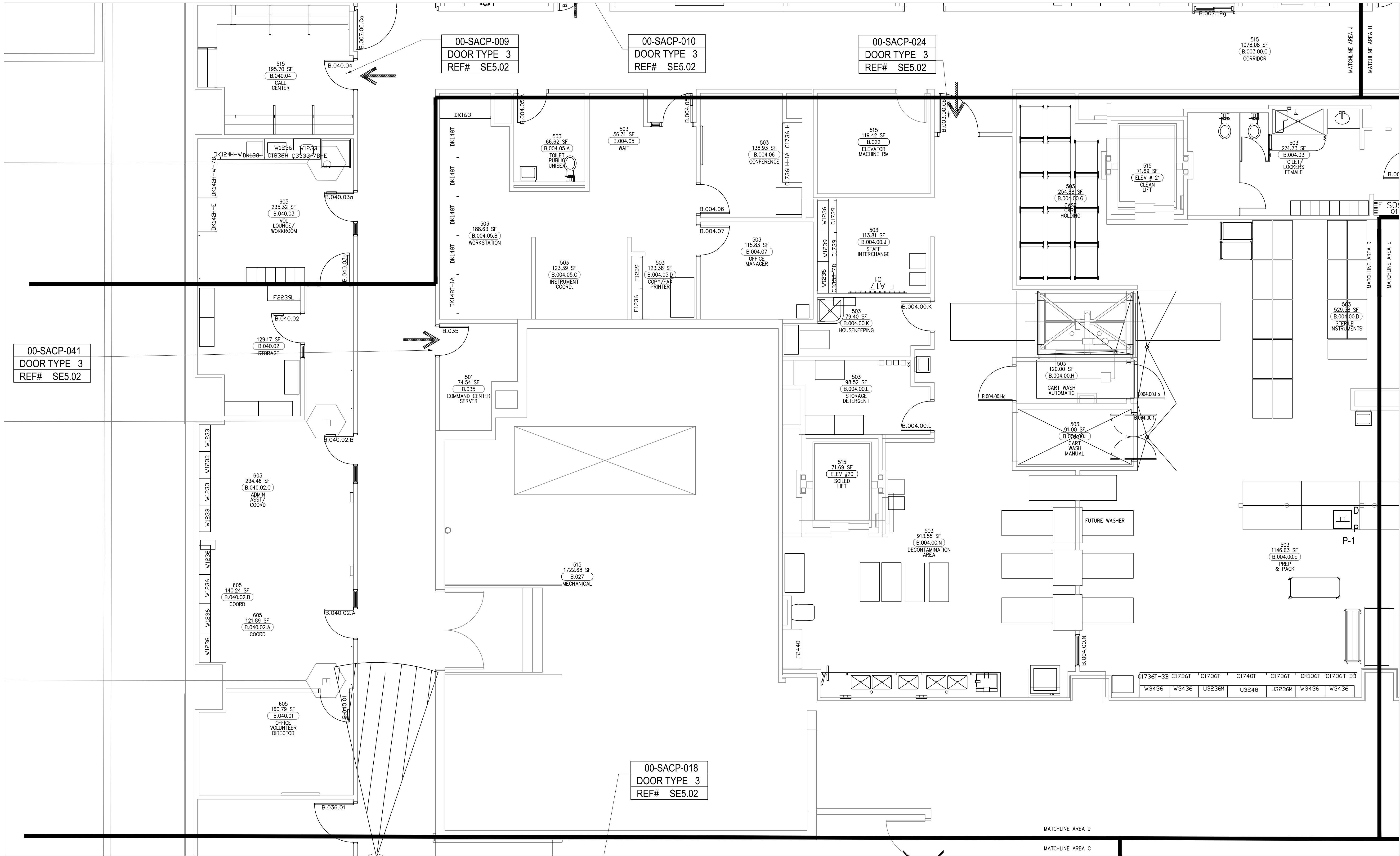
PROJECT:  
**CHOC CHILDREN'S  
HOSPITAL**  
455 SOUTH MAIN ST.  
ORANGE, CA 92668

DRAWING TITLE:  
**LOWER LEVEL  
SECURITY PLAN AREA - C**

DRN BY	DATE DRN	CHK BY	DATE CHK
JOSH G.	08/08/2012	JJC	
SCALE:	NTS		
DWG NO.	SE3.00C		

**ASBUILTS**  
**08/15/2012**





DEVICE LEGEND

DEVICE	DESCRIPTION	QTY.
CR	CARD READER	02
DC	DOOR CONTACT	02
REX	REQUEST TO EXIT DEVICE W/ DOOR LOCKS	02
EL	ELECTRIFIED LOCK	02
P	PANIC BUTTON	1
I	INTERCOMS	0
C	FIXED IP DOME COLOR CAMERA	0
AP	ACCESS CONTROL PANEL	0
CH	CCTV HEAD END LOCATIONS	0
PS	PENETRATION SLEEVES	0

SECURITY DEVICE NOTES:

- 1) CARD READERS #09, #10 & #18 ARE NOT INCLUDED IN DEVICE LEGEND ON THIS SHEET.  
2) CAMERA #01 IS NOT INCLUDED IN DEVICE LEGEND ON THIS SHEET.

ACCESS CONTROL W/  
FIRE PROTECTION DOORS:

CARD READER #

- CR-01  
CR-02  
CR-18  
CR-25  
CR-26  
CR-31  
CR-32

DOOR #

- B.070.00.Cb  
B.052 - STAIR #4  
B.032 - STAIR #3  
B.096.A - STAIR #6  
B.096 - STAIR #2  
B.083.00.V - STAIR #1 VESTIBULE  
B.083 - STAIR #1

DRAWING PREPARED BY:



1511 E. ORANGETHORPE BLVD.  
FULLERTON, CALIFORNIA 92831  
714-525-4350 - o; 714-525-4386 - f  
(c) Copyright 2012 KRATOS | HBE  
All Rights Reserved.

MUST BE SIGNED BY HBE  
TO AUTHENTICATE CONTENT(S).  
ALL DETAILS CHECKED FOR ACCURACY.

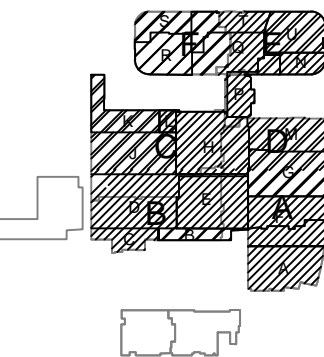
SIGNATURE \_\_\_\_\_ DATE \_\_\_\_\_

HBE JOB #

CONFIDENTIAL

THE INFORMATION CONTAINED HERIN MAY  
NOT BE USED OR REPRODUCED IN ANY  
MANNER WITHOUT WRITTEN PERMISSION OF  
KRATOS | HBE.

KEY PLAN



NO.	REV DESCRIPTION REV DATE	APPROVED BY
1.	AS BUILTS 08/15/2012	JOHN J. CHRISTIE

REV.	DESCRIPTION	APPROVED BY
------	-------------	-------------

CUSTOMER:

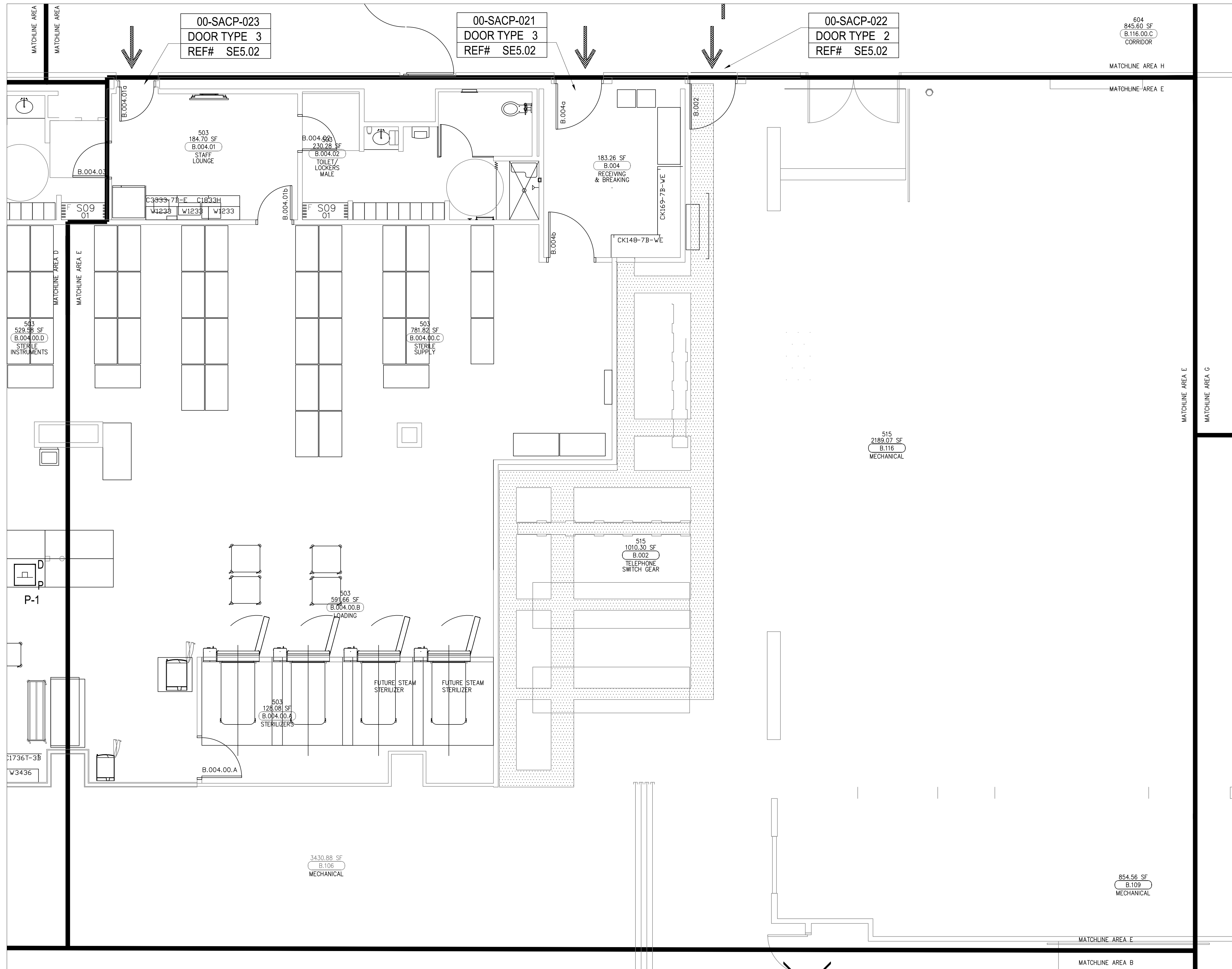


PROJECT:  
CHOC CHILDREN'S  
HOSPITAL  
455 SOUTH MAIN ST.  
ORANGE, CA 92668

DRAWING TITLE:  
LOWER LEVEL  
SECURITY PLAN AREA - D

DRN BY JOSH G.	DATE DRN 08/08/2012	CHK BY JJC	DATE CHK
SCALE:	NTS		
DWG NO.	SE3.00D		

ASBUILTS  
08/15/2012



DEVICE LEGEND

DEVICE	DESCRIPTION	QTY.
CR	CARD READER	03
DC	DOOR CONTACT	03
REX	REQUEST TO EXIT DEVICE W/ DOOR LOCKS	03
EL	ELECTRIFIED LOCK	03
P	PANIC BUTTON	0
S	INTERCOMS	0
IP	FIXED IP DOME COLOR CAMERA	0
ACP	ACCESS CONTROL PANEL	0
CCTV	CCTV HEAD END LOCATIONS	0
PS	PENETRATION SLEEVES	0

ACCESS CONTROL W/  
FIRE PROTECTION DOORS:

CARD READER #	DOOR #
CR-01	B.070.00.Cb
CR-02	B.052 - STAIR #4
CR-18	B.032 - STAIR #3
CR-25	B.096.A - STAIR #6
CR-26	B.096 - STAIR #2
CR-31	B.083.00.V - STAIR #1 VESTIBULE
CR-32	B.083 - STAIR #1

DRAWING PREPARED BY:



1511 E. ORANGETHORPE BLVD.  
FULLERTON, CALIFORNIA 92831  
714-525-4350 - o; 714-525-4386 - f  
(c) Copyright 2012 KRATOS | HBE  
All Rights Reserved.

MUST BE SIGNED BY HBE  
TO AUTHENTICATE CONTENT(S).  
ALL DETAILS CHECKED FOR ACCURACY.

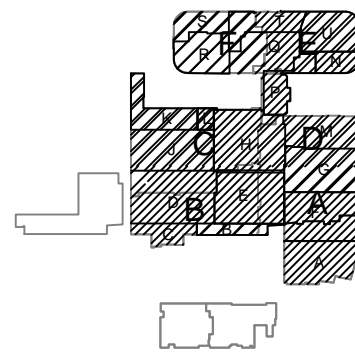
SIGNATURE \_\_\_\_\_ DATE \_\_\_\_\_

HBE JOB #

CONFIDENTIAL

THE INFORMATION CONTAINED HEREIN MAY  
NOT BE USED OR REPRODUCED IN ANY  
MANNER WITHOUT WRITTEN PERMISSION OF  
KRATOS | HBE.

KEY PLAN



NO.	REV DESCRIPTION REV DATE	APPROVED BY
1.	AS BUILTS 08/15/2012	JOHN J. CHRISTIE

REV.	DESCRIPTION	APPROVED BY
------	-------------	-------------

CUSTOMER:



PROJECT:

CHOC CHILDREN'S  
HOSPITAL  
455 SOUTH MAIN ST.  
ORANGE, CA 92668

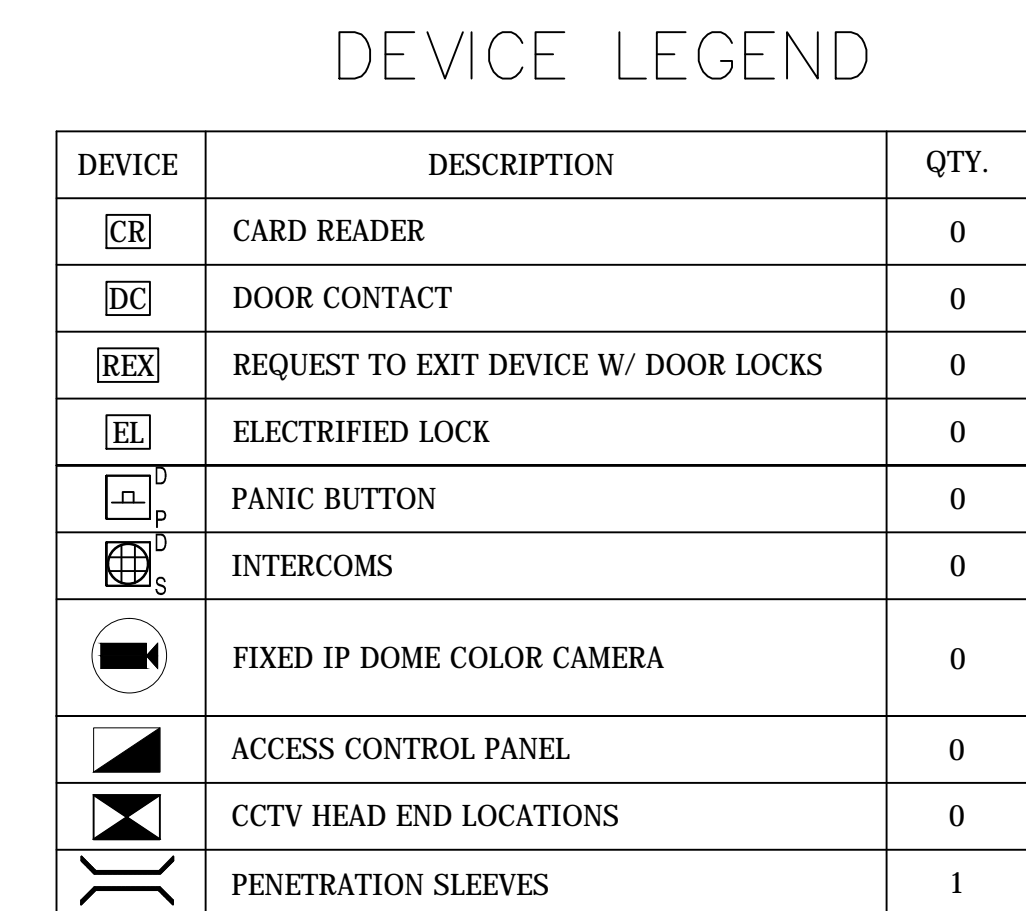
DRAWING TITLE:

LOWER LEVEL  
SECURITY PLAN AREA - E

DRN BY	DATE DRN	CHK BY	DATE CHK
JOSH G.	08/08/2012	JJC	
SCALE:	NTS		
DWG NO.	SE3.00E		

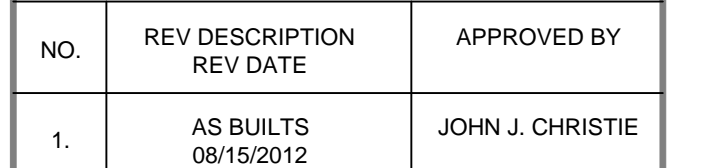
ASBUILTS  
08/15/2012





<u>CARD READER #</u>	<u>DOOR #</u>
CR-01	B.070.00.Cb
CR-02	B.052 - STAIR #4
CR-18	B.032 - STAIR #3
CR-25	B.096.A - STAIR #6
CR-26	B.096 - STAIR #2
CR-31	B.083.00.V - STAIR #1 VESTIBULE
CR-32	B.083 - STAIR #1

THE INFORMATION CONTAINED HEREIN MAY NOT BE USED OR REPRODUCED IN ANY MANNER WITHOUT WRITTEN PERMISSION OF KRATOS | HBE.

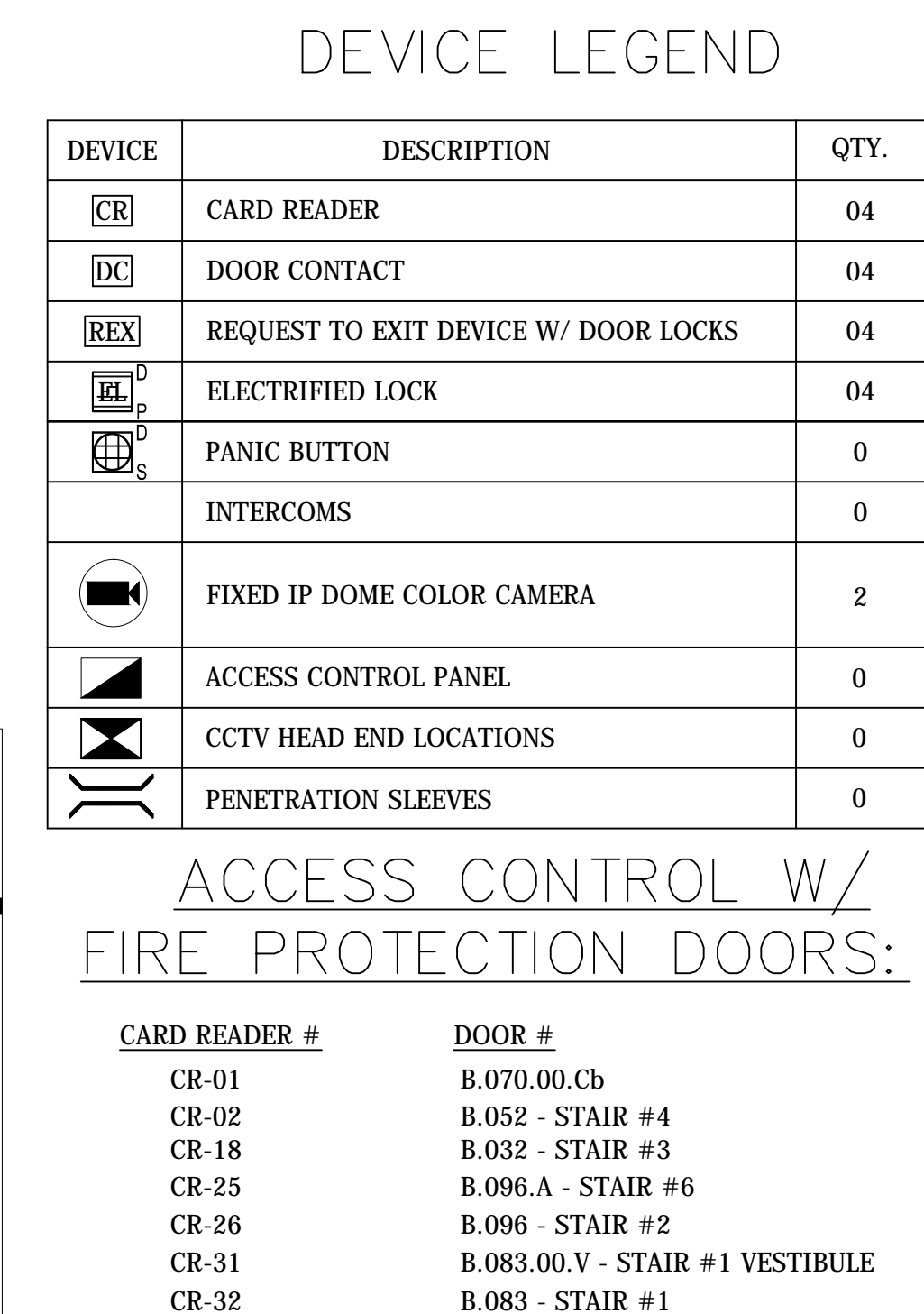


REV.	DESCRIPTION	APPROVED BY
------	-------------	-------------



DRN BY	DATE DRN	CHK BY	DATE CHK
JOSH G.	08/08/2012	JJC	
SCALE:	NTS		
DWG NO.	SE3.00F		

**ASBUILTS**  
**08/15/2012**



ACCESS CONTROL W/  
FIRE PROTECTION DOORS:

<u>CARD READER #</u>	<u>DOOR #</u>
CR-01	B.070.00.Cb
CR-02	B.052 - STAIR #4
CR-18	B.032 - STAIR #3
CR-25	B.096.A - STAIR #6
CR-26	B.096 - STAIR #2
CR-31	B.083.00.V - STAIR #1 VESTIBULE
CR-32	B.083 - STAIR #1

DRAWING PREPARED BY:



1511 E. ORANGETHORPE BLVD.  
FULLERTON, CALIFORNIA 9283  
714-525-4350 - o; 714-525-4386 - f  
(c) Copyright 2012 KRATOS | HBE  
All Rights Reserved.

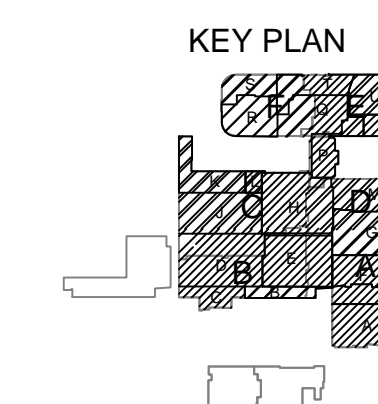
**MUST BE SIGNED BY HBE  
TO AUTHENTICATE CONTENT(S).  
ALL DETAILS CHECKED FOR ACCURACY**

SIGNATURE \_\_\_\_\_ DATE \_\_\_\_\_

HBE JOB #

CONFIDENTIAL

THE INFORMATION CONTAINED HEREIN MAY NOT BE USED OR REPRODUCED IN ANY MANNER WITHOUT WRITTEN PERMISSION OF KRATOS | HRF



REV.	DESCRIPTION	APPROVED BY
------	-------------	-------------



PROJECT:  
CHOC CHILDREN'S  
HOSPITAL  
455 SOUTH MAIN ST.  
ORANGE, CA 92668

DRAWING TITLE:

LOWER LEVEL  
SECURITY PLAN AREA -G

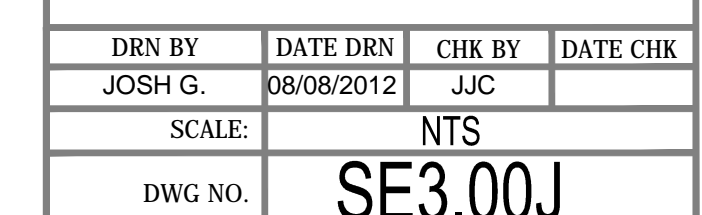
DRN BY	DATE DRN	CHK BY	DATE CH
JOSH G.	08/08/2012	JJC	
SCALE:	NTS		
DWG NO.	SE3.00G		

**ASBUILTS**  
**08/15/2012**





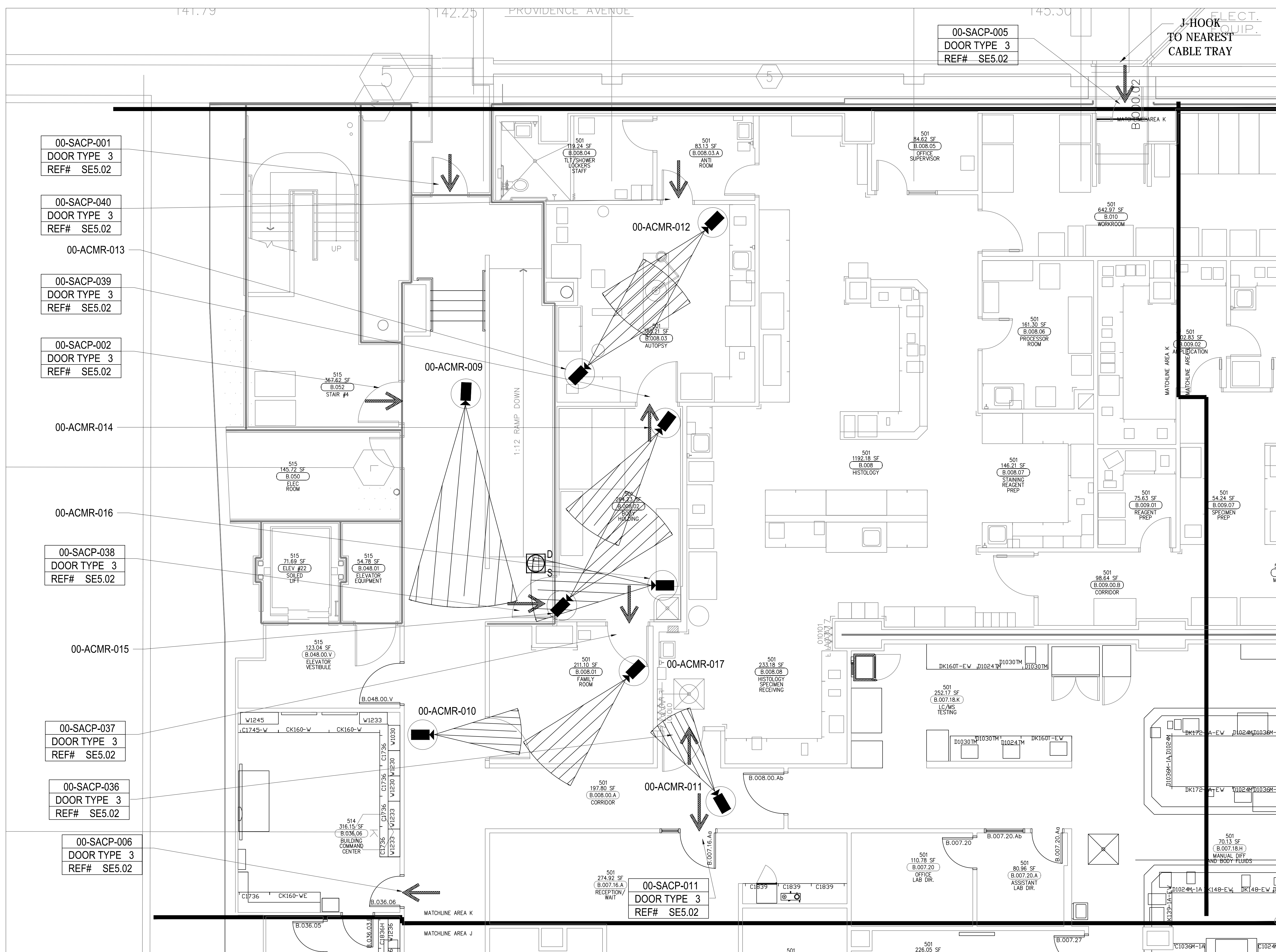




DRN BY	DATE DRN	CHK BY	DATE CHK
JOSH G.	08/08/2012	JJC	
SCALE:	NTS		
DWG NO.	SE3.00J		

**ASBUILTS**  
**08/15/2012**





DEVICE LEGEND		
DEVICE	DESCRIPTION	QTY.
CR	CARD READER	10
DC	DOOR CONTACT	10
REL	REQUEST TO EXIT DEVICE W/ DOOR LOCKS	10
EL	ELECTRIFIED LOCK	10
PB	PANIC BUTTON	0
IC	INTERCOMS	1
IPDC	FIXED IP DOME COLOR CAMERA	09
ACP	ACCESS CONTROL PANEL	0
CHL	CCTV HEAD END LOCATIONS	0
PS	PENETRATION SLEEVES	0

SECURITY DEVICE NOTES:  
1) CARD READER #5 IS INCLUDED  
IN DEVICE LEGEND ON THIS SHEET.

### ACCESS CONTROL W/ FIRE PROTECTION DOORS:

CARD READER #	DOOR #
CR-01	B.070.00.Cb
CR-02	B.052 - STAIR #4
CR-18	B.032 - STAIR #3
CR-25	B.096.A - STAIR #6
CR-26	B.096 - STAIR #2
CR-31	B.083.00.V - STAIR #1 VESTIBULE
CR-32	B.083 - STAIR #1

DRAWING PREPARED BY:  
**KRATOS HBE**  
1511 E. ORANGETHORPE BLVD.  
FULLERTON, CALIFORNIA 92831  
714-525-4350 - o; 714-525-4386 - f  
(c) Copyright 2012 KRATOS | HBE  
All Rights Reserved.

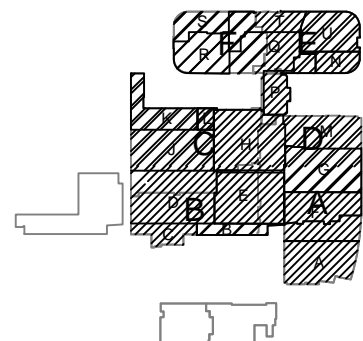
MUST BE SIGNED BY HBE  
TO AUTHENTICATE CONTENT(S).  
ALL DETAILS CHECKED FOR ACCURACY.

SIGNATURE \_\_\_\_\_ DATE \_\_\_\_\_

HBE JOB # \_\_\_\_\_

**CONFIDENTIAL**  
THE INFORMATION CONTAINED HEREIN MAY  
NOT BE USED OR REPRODUCED IN ANY  
MANNER WITHOUT WRITTEN PERMISSION OF  
KRATOS | HBE.

### KEY PLAN



NO.	REV DESCRIPTION REV DATE	APPROVED BY
1.	AS BUILTS 08/15/2012	JOHN J. CHRISTIE

REV.	DESCRIPTION	APPROVED BY
------	-------------	-------------

CUSTOMER:



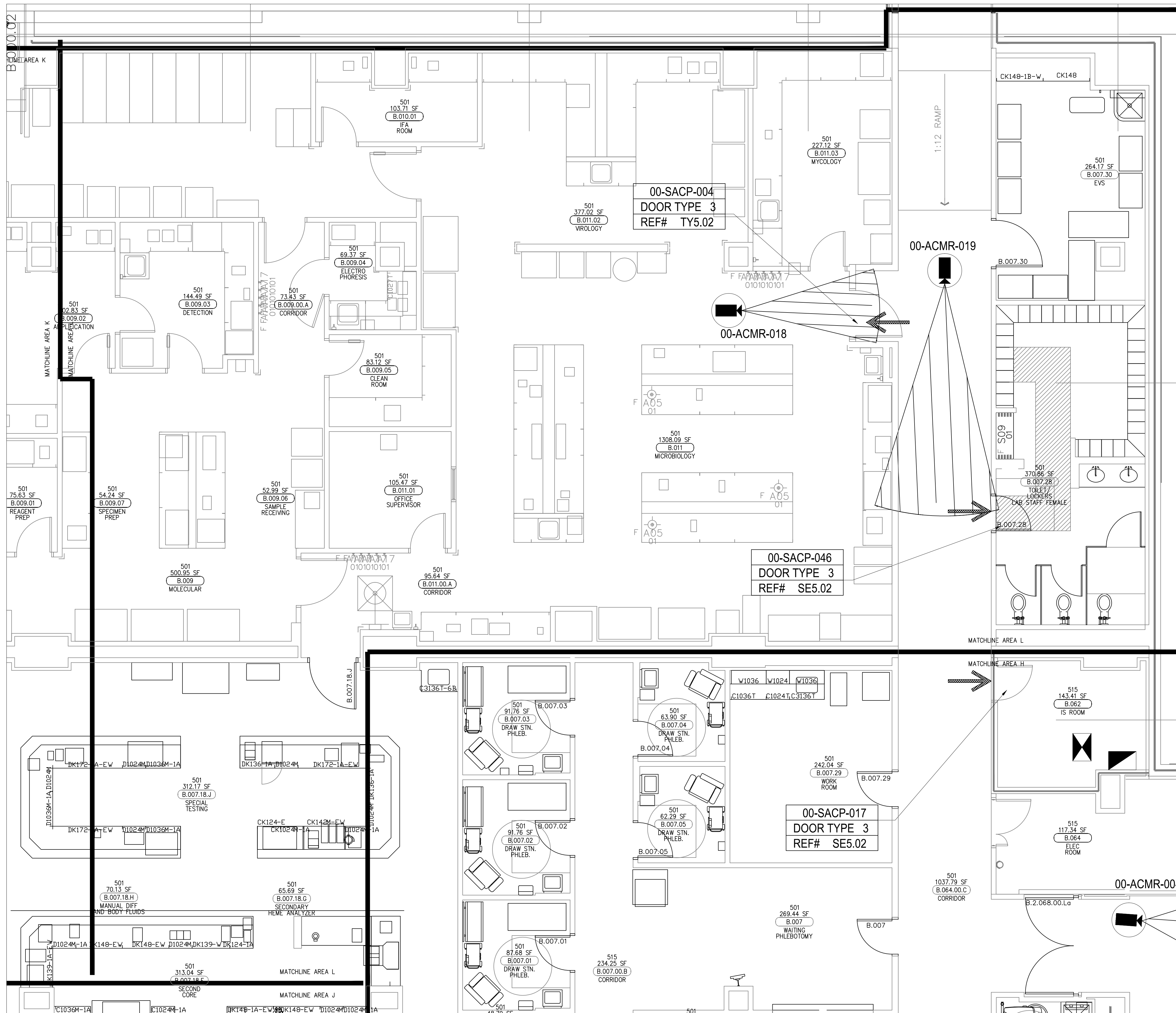
PROJECT:  
**CHOC CHILDREN'S  
HOSPITAL**  
455 SOUTH MAIN ST.  
ORANGE, CA 92668

DRAWING TITLE:  
**LOWER LEVEL  
SECURITY PLAN AREA -K**

DRN BY	DATE DRN	CHK BY	DATE CHK
JOSH G.	08/08/2012	JJC	
SCALE:	NTS		
DWG NO.	SE3.00K		

**ASBUILTS  
08/15/2012**





DEVICE LEGEND

DEVICE	DESCRIPTION	QTY.
CR	CARD READER	02
DC	DOOR CONTACT	02
REX	REQUEST TO EXIT DEVICE W/ DOOR LOCKS	02
EL	ELECTRIFIED LOCK	02
PB	PANIC BUTTON	0
IC	INTERCOMS	0
CCTV	FIXED IP DOME COLOR CAMERA	02
ACP	ACCESS CONTROL PANEL	0
CCTV HE	CCTV HEAD END LOCATIONS	0
PS	PENETRATION SLEEVES	0

SECURITY DEVICE NOTES:

- CARD READER #17 IS NOT INCLUDED IN DEVICE LEGEND ON THIS SHEET.
- ACCESS CONTROL PANEL AND CCTV HEAD END LOCATIONS ARE NOT INCLUDED IN DEVICE LEGEND ON THIS SHEET.

ACCESS CONTROL W/  
FIRE PROTECTION DOORS:

CARD READER #	DOOR #
CR-01	B.070.00.Cb
CR-02	B.052 - STAIR #4
CR-18	B.032 - STAIR #3
CR-25	B.096.A - STAIR #6
CR-26	B.096 - STAIR #2
CR-31	B.083.00.V - STAIR #1 VESTIBULE
CR-32	B.083 - STAIR #1

DRAWING PREPARED BY:



1511 E. ORANGETHORPE BLVD.  
FULLERTON, CALIFORNIA 92831  
714-525-4350 - o; 714-525-4386 - f  
(c) Copyright 2012 KRATOS | HBE  
All Rights Reserved.

MUST BE SIGNED BY HBE  
TO AUTHENTICATE CONTENT(S).  
ALL DETAILS CHECKED FOR ACCURACY.

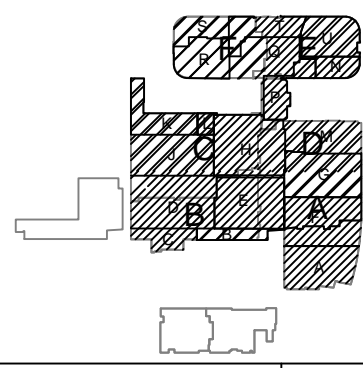
SIGNATURE \_\_\_\_\_ DATE \_\_\_\_\_

HBE JOB #

CONFIDENTIAL

THE INFORMATION CONTAINED HERIN MAY  
NOT BE USED OR REPRODUCED IN ANY  
MANNER WITHOUT WRITTEN PERMISSION OF  
KRATOS | HBE.

KEY PLAN



NO.	REV DESCRIPTION REV DATE	APPROVED BY
1.	AS BUILTS 08/15/2012	JOHN J. CHRISTIE

REV.	DESCRIPTION	APPROVED BY
------	-------------	-------------



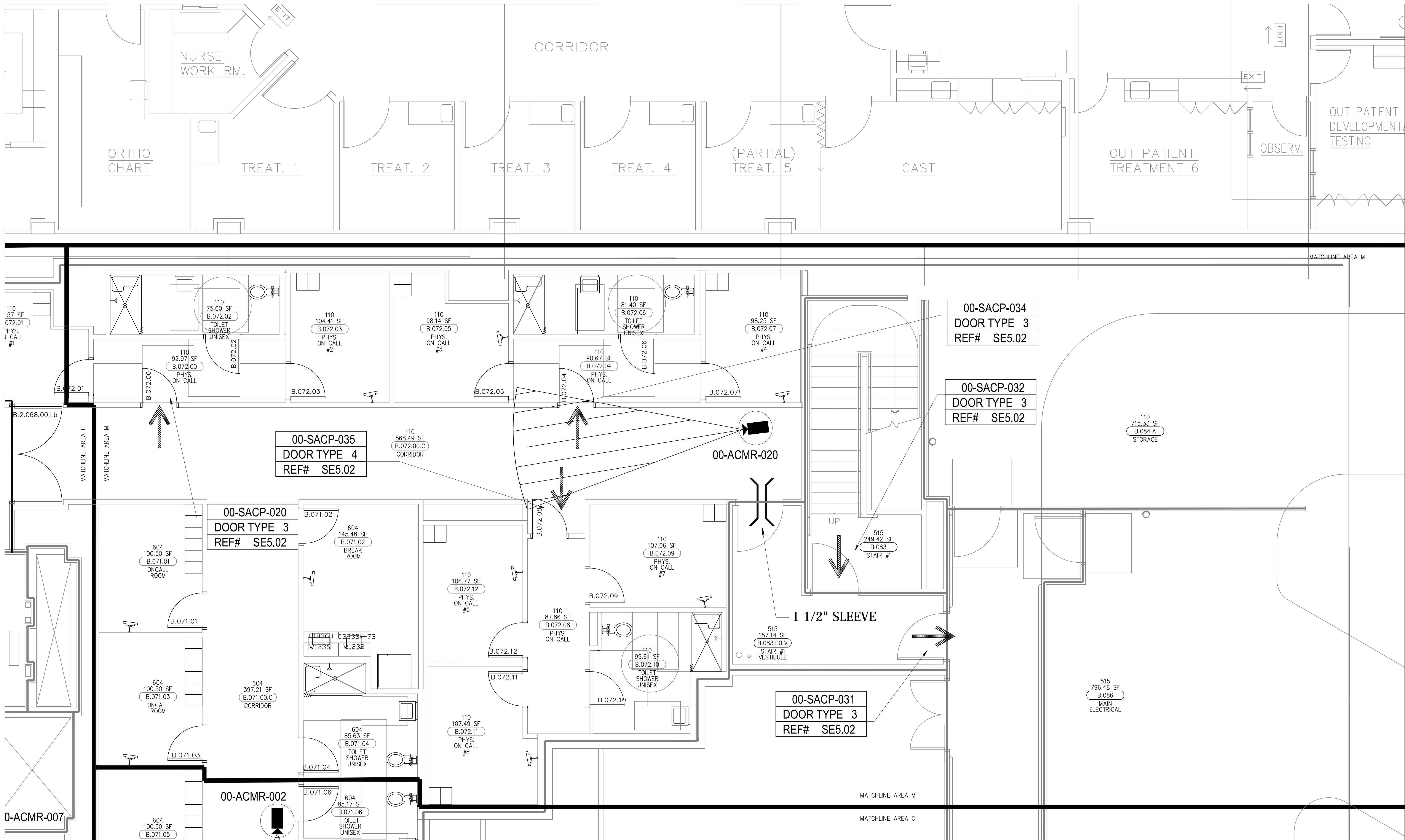
PROJECT:  
CHOC CHILDREN'S  
HOSPITAL  
455 SOUTH MAIN ST.  
ORANGE, CA 92668

DRAWING TITLE:  
LOWER LEVEL  
SECURITY PLAN AREA -L

DRN BY	DATE DRN	CHK BY	DATE CHK
JOSH G.	08/08/2012	JJC	
SCALE:	NTS		
DWG NO.	SE3.00L		

ASBUILTS  
08/15/2012





DEVICE LEGEND

DEVICE	DESCRIPTION	QTY.
CR	CARD READER	05
DC	DOOR CONTACT	05
REX	REQUEST TO EXIT DEVICE W/ DOOR LOCKS	05
EL	ELECTRIFIED LOCK	05
PA	PANIC BUTTON	0
INT	INTERCOMS	0
IP	FIXED IP DOME COLOR CAMERA	01
ACP	ACCESS CONTROL PANEL	0
CHL	CCTV HEAD END LOCATIONS	0
PS	PENETRATION SLEEVES	01

ACCESS CONTROL W/  
FIRE PROTECTION DOORS:

CARD READER #	DOOR #
CR-01	B.070.00.Cb
CR-02	B.052 - STAIR #4
CR-18	B.032 - STAIR #3
CR-25	B.096.A - STAIR #6
CR-26	B.096 - STAIR #2
CR-31	B.083.00.V - STAIR #1 VESTIBULE
CR-32	B.083 - STAIR #1

DRAWING PREPARED BY:



1511 E. ORANGETHORPE BLVD.  
FULLERTON, CALIFORNIA 92831  
714-525-4350 - o; 714-525-4386 - f  
(c) Copyright 2012 KRATOS | HBE  
All Rights Reserved.

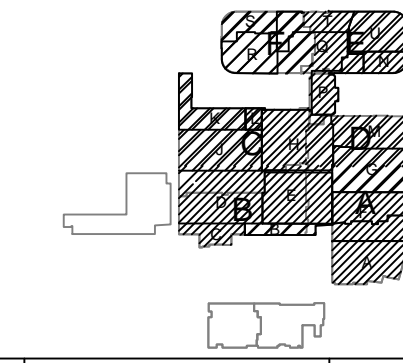
MUST BE SIGNED BY HBE  
TO AUTHENTICATE CONTENT(S).  
ALL DETAILS CHECKED FOR ACCURACY.

SIGNATURE \_\_\_\_\_ DATE \_\_\_\_\_

HBE JOB # \_\_\_\_\_

**CONFIDENTIAL**  
THE INFORMATION CONTAINED HEREIN MAY  
NOT BE USED OR REPRODUCED IN ANY  
MANNER WITHOUT WRITTEN PERMISSION OF  
KRATOS | HBE.

KEY PLAN



NO.	REV DESCRIPTION REV DATE	APPROVED BY
1.	AS BUILTS 08/15/2012	JOHN J. CHRISTIE

REV.	DESCRIPTION	APPROVED BY
------	-------------	-------------

CUSTOMER:



PROJECT:  
CHOC CHILDREN'S  
HOSPITAL  
455 SOUTH MAIN ST.  
ORANGE, CA 92668

DRAWING TITLE:  
LOWER LEVEL  
SECURITY PLAN AREA -M

DRN BY	DATE DRN	CHK BY	DATE CHK
JOSH G.	08/08/2012	JJC	
SCALE:	NTS		
DWG NO.	SE3.00M		

**ASBUILTS**  
**08/15/2012**