

PROJECT: **CHILDREN'S HOSPITAL
OF ORANGE COUNTY - TOWER II**

ADDRESS: 455 South Main Street
Orange, CA 92668-3874
W.O. NO.: 12684

PROPRIETARY STATEMENT
THESE DRAWINGS AND DOCUMENTS HEREON ATTACHED ARE THE
PROPERTY OF BERGELECTRIC CORPORATION. ANY REUSE OR
REPRODUCTION OF THESE DOCUMENTS WITHOUT WRITTEN
PERMISSION OF BERGELECTRIC CORPORATION IS STRICTLY
FORBIDDEN. ALL RIGHTS RESERVED.

DRAWN BY:
J. RAMIREZ

DESIGN SUPERVISOR:

INSTALL SUPERVISOR:
Scott Adams
Tel Data Systems
Bergelectric Corporation
650 Upper Street
Escondido, CA 92029

REVISION:
05-30-12 RECORD DRAWINGS

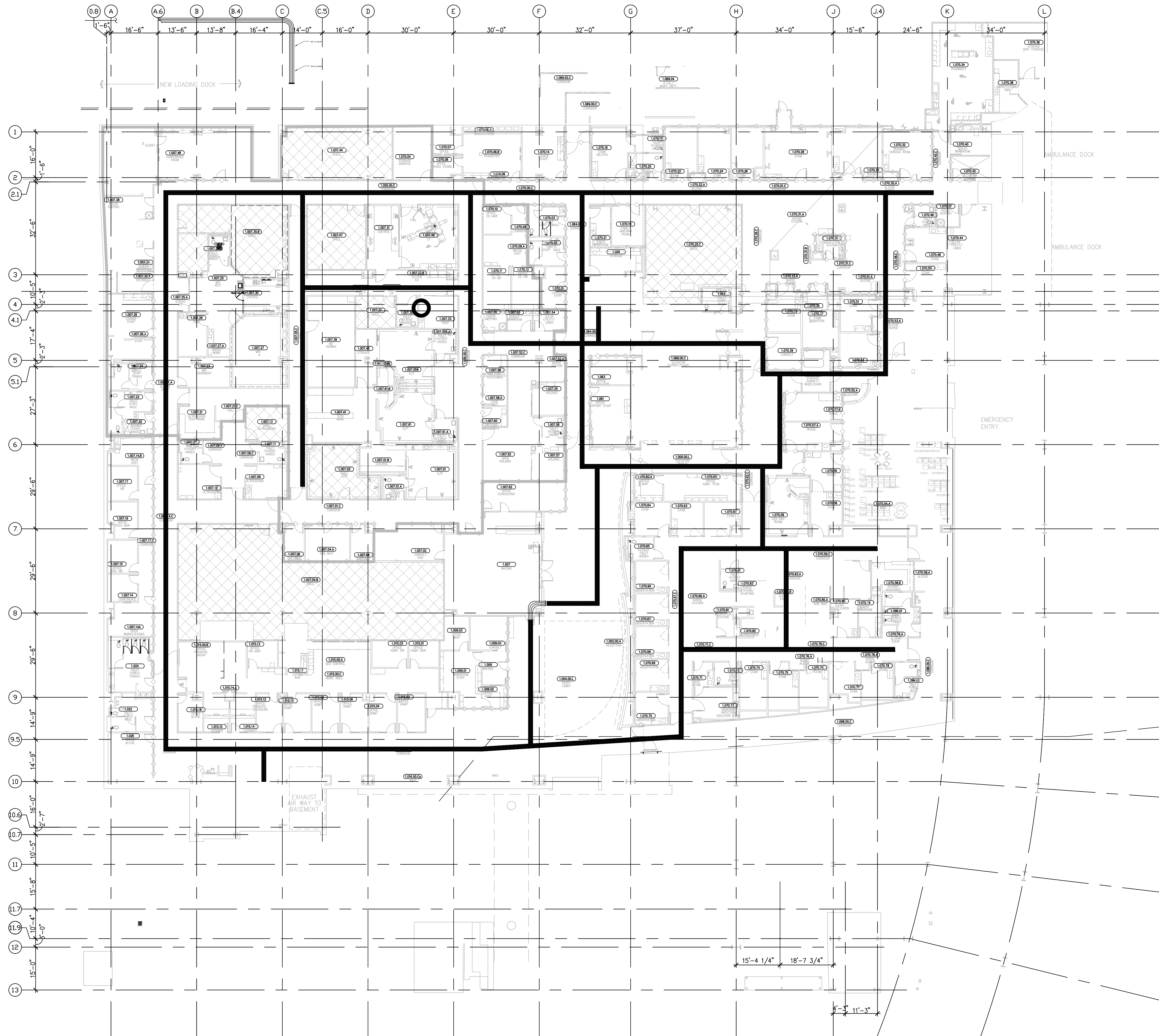
SHEET TITLE:

TELECOM
FLOOR PLAN
LEVEL 1
OVERALL

SCALE:
1/16"=1'0"

DRAWING NO.:

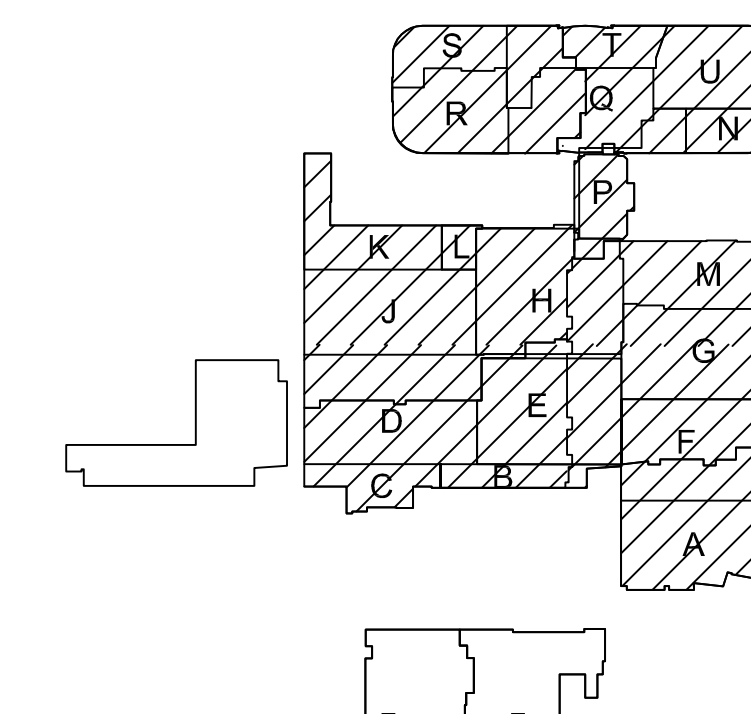
**T3.1
RECORD
DRAWING**



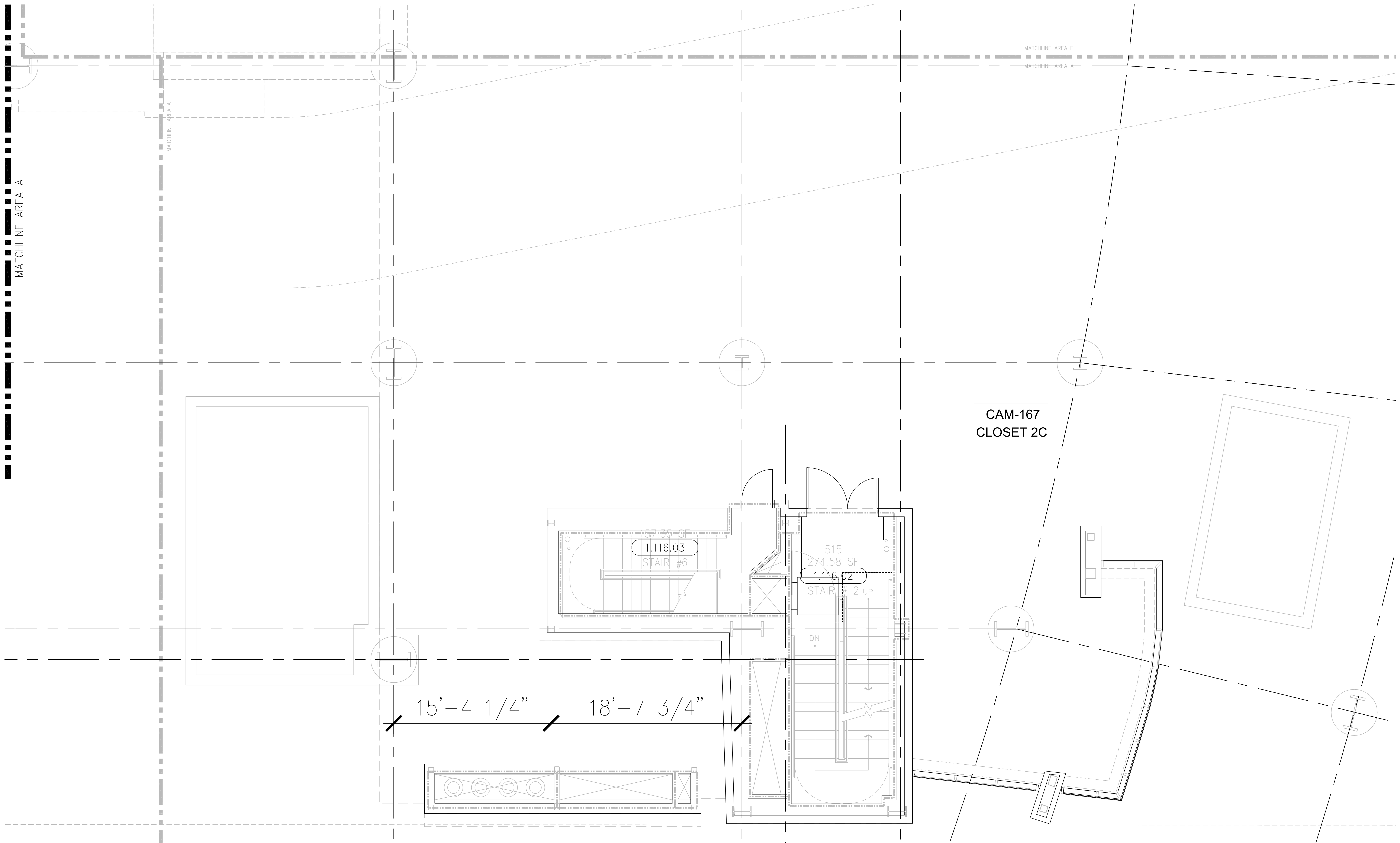
GENERAL SHEET NOTES

1. THE DRAWINGS ARE DIAGRAMMATIC ONLY AND MAY NOT SHOW ALL COMPONENTS, MATERIALS, OFFSETS, BENDS, ELBOWS AND OTHER SPECIFIC ELEMENTS THAT MAY BE REQUIRED FOR A COMPLETE INSTALLATION. THE CONTRACTOR SHALL BE RESPONSIBLE FOR PROVIDING ALL MATERIALS NEEDED FOR A COMPLETE AND FUNCTIONAL INSTALLATION.

KEY PLAN



T3 LEVEL 1 - TELECOM PLAN - OVERALL
1/16"=1'0"



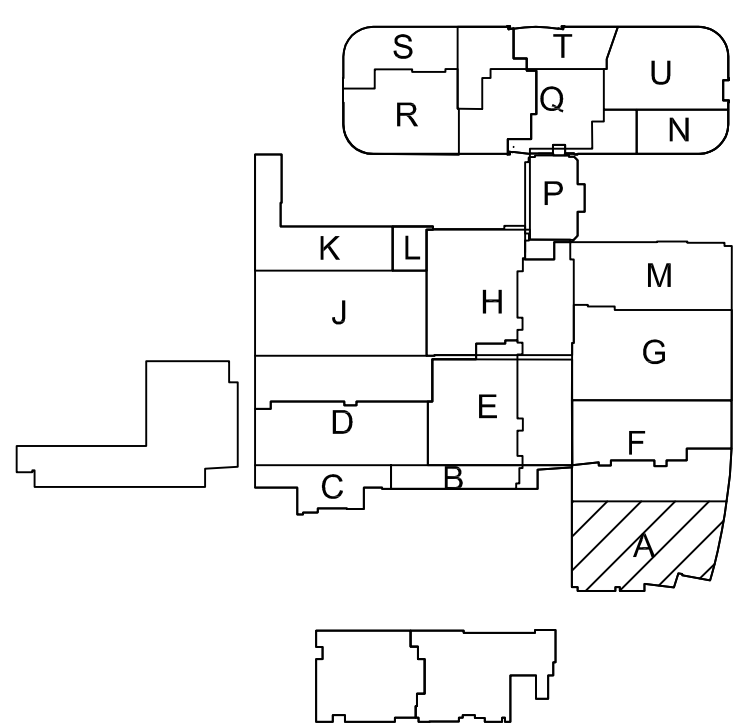
○ SHEET KEYNOTES

1. 12\"/>

GENERAL SHEET NOTES

1. THE DRAWINGS ARE DIAGRAMMATIC ONLY AND MAY NOT SHOW ALL COMPONENTS, MATERIALS, OFFSETS, BENDS, ELBOWS AND OTHER SPECIFIC ELEMENTS THAT MAY BE REQUIRED FOR A COMPLETE INSTALLATION. THE CONTRACTOR SHALL BE RESPONSIBLE FOR PROVIDING ALL MATERIALS NEEDED FOR A COMPLETE AND FUNCTIONAL INSTALLATION.
2. ELECTRIC EQUIPMENT AND DEVICES (E.G. PBX, NETWORK SWITCHES) ARE SHOWN FOR REFERENCE ONLY.
3. REFER TO ARCHITECTURAL DETAIL PLANS FOR FINAL PATIENT ROOM DEVICE LOCATIONS. REFER TO ARCHITECTURAL DETAILS FOR OVERCOUNTER WAO HEIGHTS. REFER TO ARCHITECTURAL DETAILS FOR WALL-MOUNT WAO HEIGHTS.
4. HORIZONTAL DATA/VIDEO/CABLE SHALL TERMINATE IN THE TECHNOLOGY ROOM ON THE SAME FLOOR AS THE WORK AREA OUTLETS.
5. WORK AREA OUTLETS SHALL CONSIST OF SINGLE PLASTER REDUCING RINGS INSTALLED ON OVERSIZE DOUBLE GANG BACKBOXES, UNLESS OTHERWISE NOTED.
6. TV COAX CABLES SHALL BE COILED IN THE RESPECTIVE TECHNOLOGY ROOMS WITH A 20' SERVICE LOOP PRIOR TO TERMINATIONS. COILS SHALL BE SECURED TO THE AUDIOVISUAL WALL FIELD FOR AV CONTRACTOR.
7. COMMON LOW VOLTAGE CABLE RUNWAY IS 24\"/>
8. CABLE TRAY SHALL NOT PENETRATE WALLS. PROVIDE TRANSITION FROM CABLE TRAY TO LISTED FIRESTOP ASSEMBLIES IN ORDER TO PENETRATE FIRE/SMOKE WALLS. TRANSITION TO 4\"/>
9. REFER TO ELECTRICAL DRAWINGS & SPECIFICATIONS FOR SHARED FLOOR BOXES & LOW VOLTAGE CONDUIT.
10. PROVIDE BRACING TO MEET OSHPD SEISMIC REQUIREMENTS. REFER TO SHEET T4.02 FOR MORE INFORMATION.
11. PROVIDE ALL OUTLET CONDUITS FROM WORK AREA OUTLETS, DEVICES OR PULL BOXES TO NEAREST CABLE TRAY.
12. INSTALL CABLE TRAY @ 6\"/>

KEY PLAN



T3 LEVEL 1 - TELECOM PLAN - AREA A
1/4\"/>

PROJECT: CHILDREN'S HOSPITAL
OF ORANGE COUNTY - TOWER II
ADDRESS: 455 South Main Street
Orange, CA 92668-3874
W.O. NO.: 12684

PROPRIETARY STATEMENT
THESE DRAWINGS/DOCUMENTS HEREON ATTACHED ARE THE
PROPERTY OF BERGELECTRIC CORPORATION ANY REUSE OR
REPRODUCTION OF THESE DOCUMENTS WITHOUT WRITTEN
PERMISSION OF BERGELECTRIC CORPORATION IS STRICTLY
FORBIDDEN. ALL RIGHTS RESERVED.

DRAWN BY:
J. RAMIREZ

DESIGN SUPERVISOR:

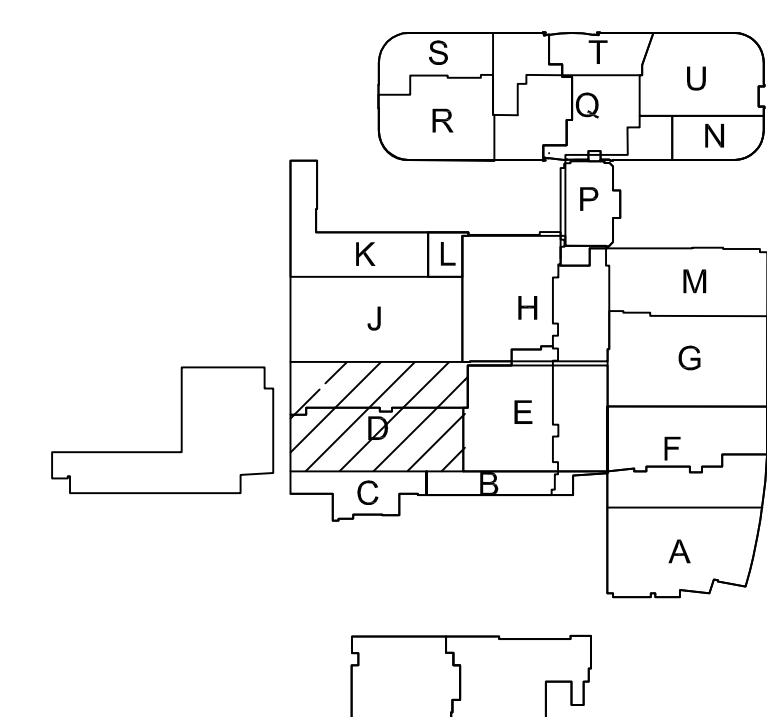
INSTALL SUPERVISOR:
Scott Adams
Tel Data Systems
Bergelectric Corporation
650 Upper Street
Escondido, CA 92029

REVISION:
05-30-12 RECORD DRAWINGS

SHEET TITLE:
TELECOM
FLOOR PLAN
LEVEL 1A
AREA-A

SCALE:
1/4\"/>

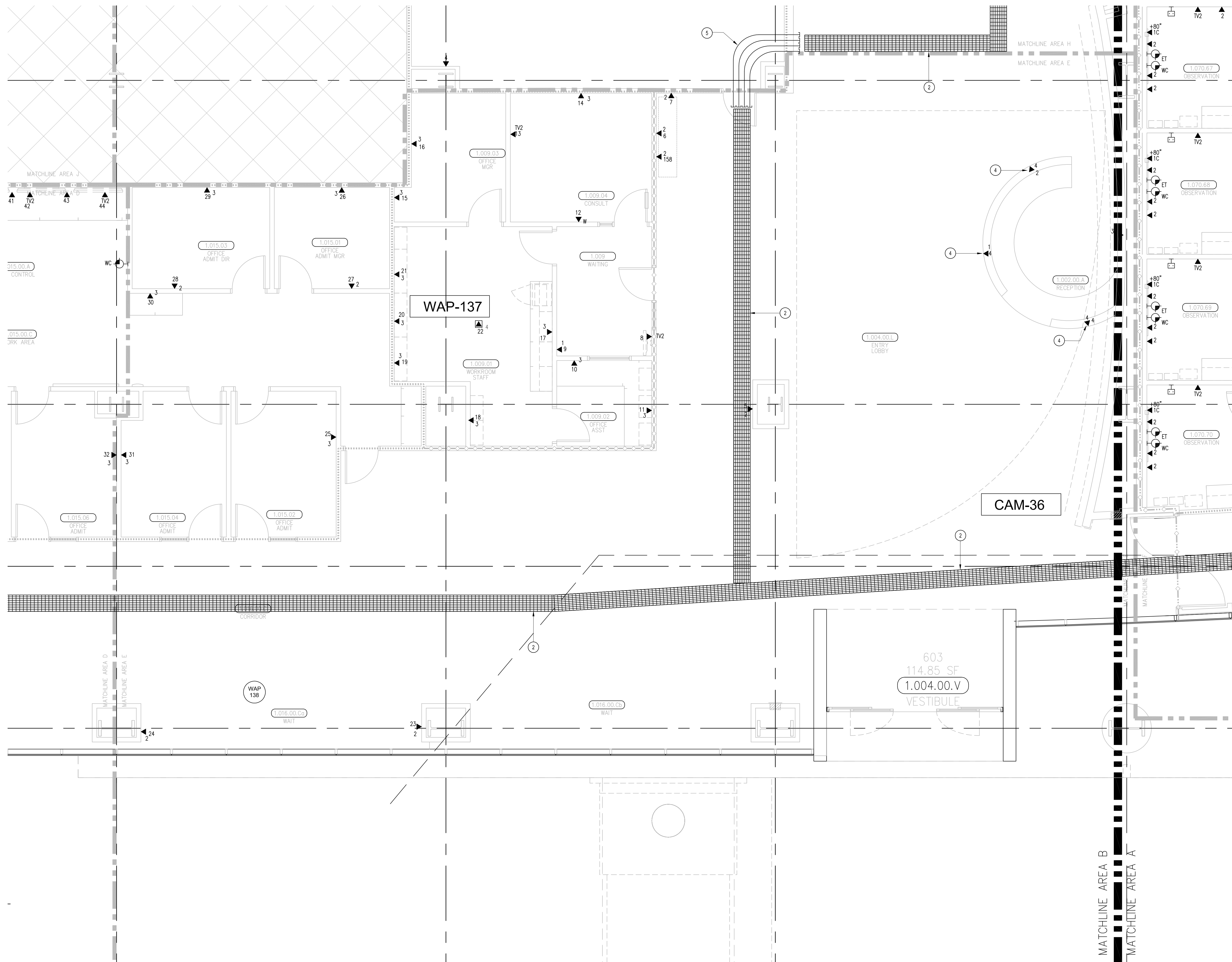
DRAWING NO.:
T3.1A
RECORD
DRAWING



T3.1D
RECORD
DRAWING

T3 LEVEL 1 - TELECOM PLAN - AREA D

 $1/4" = 1/2$



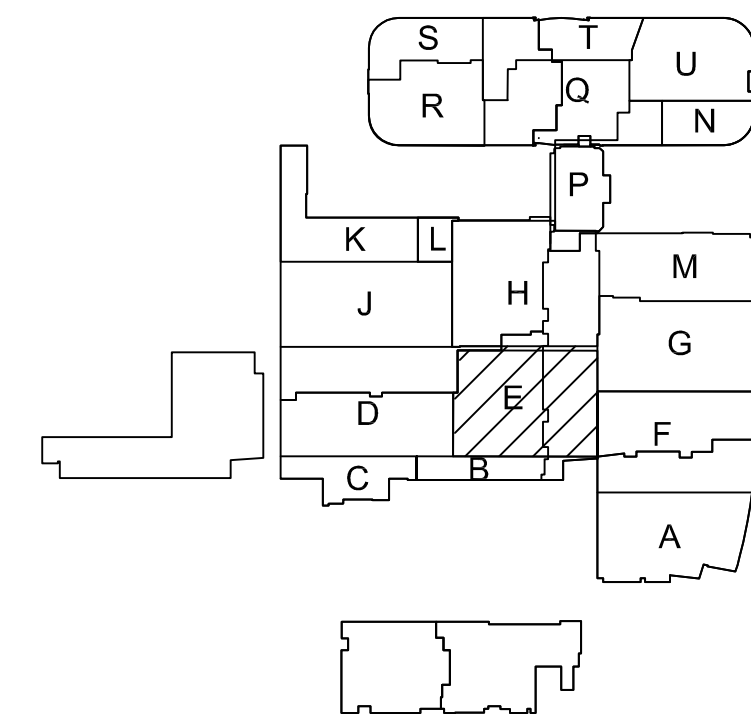
SHEET KEYNOTES

- 12"W X 6"H CABLE RUNWAY
- 24"W X 6"H CABLE RUNWAY
- 18"W X 6"H CABLE RUNWAY
- CABLES ROUTED WITHIN CASEWORK/MILLWORK. PROVIDE 1-1/4" CONDUIT AT WALL FOR ROUTING INTO CASEWORK/MILLWORK RACEWAY. TERMINATE CONDUIT ONTO A TWO-GANG BACKBOX WITH A ONE-GANG REDUCER RING.
- PROVIDE TWELVE (12) 4" CONDUITS WITH A MINIMUM OF (6) EMPTY CONDUITS UPON COMPLETION.

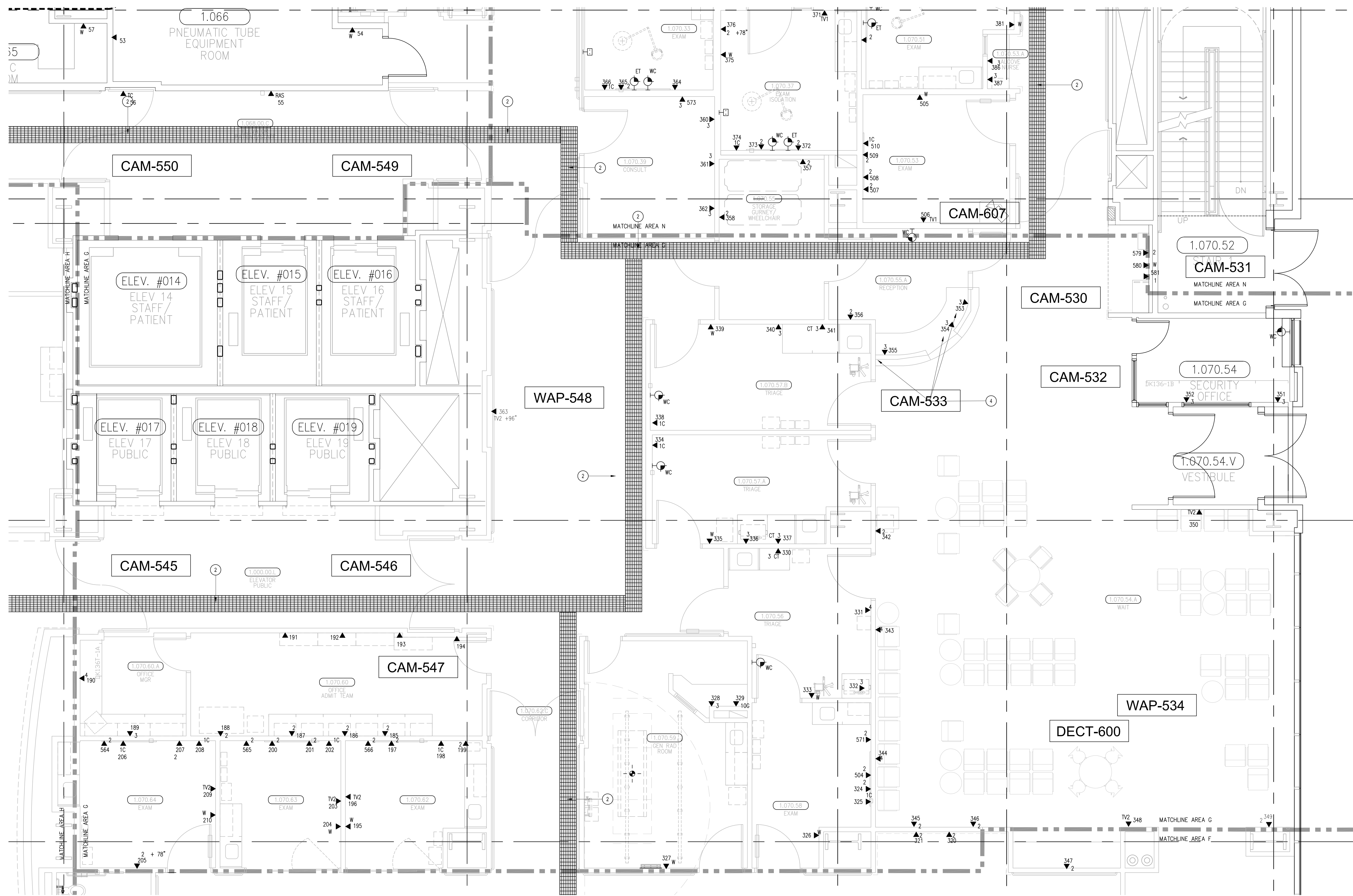
GENERAL SHEET NOTES

- THE DRAWINGS ARE DIAGRAMMATIC ONLY AND MAY NOT SHOW ALL COMPONENTS, MATERIALS, OFFSETS, BENDS, ELBOWS AND OTHER SPECIFIC ELEMENTS THAT MAY BE REQUIRED FOR A COMPLETE INSTALLATION. THE CONTRACTOR SHALL BE RESPONSIBLE FOR PROVIDING ALL MATERIALS NEEDED FOR A COMPLETE AND FUNCTIONAL INSTALLATION.
- ELECTRIC EQUIPMENT AND DEVICES (E.G. PBX, NETWORK SWITCHES) ARE SHOWN FOR REFERENCE ONLY.
- REFER TO ARCHITECTURAL DETAIL PLANS FOR FINAL PATIENT ROOM DEVICE LOCATIONS. REFER TO ARCHITECTURAL DETAILS FOR OVERCOUNTER WAD HEIGHTS. REFER TO ARCHITECTURAL DETAILS FOR WALL-MOUNT WAD HEIGHTS.
- HORIZONTAL DATA/VOICE/VIDEO CABLE SHALL TERMINATE IN THE TECHNOLOGY ROOM ON THE SAME FLOOR AS THE WORK AREA OUTLETS.
- WORK AREA OUTLETS SHALL CONSIST OF SINGLE PLASTER REDUCING RINGS INSTALLED ON OVERSIZE DOUBLE GANG BACKBOXES. UNLESS OTHERWISE NOTED.
- TV COAX CABLES SHALL BE COILED IN THE RESPECTIVE TECHNOLOGY ROOMS WITH A 20' SERVICE LOOP PRIOR TO TERMINATIONS. COILS SHALL BE SECURED TO THE AUDIOVISUAL WALL FIELD FOR AV CONTRACTOR.
- COMMON LOW VOLTAGE CABLE RUNWAY IS 24" W X 6" HIGH. PROVIDE ALL MATERIALS AS NEEDED FOR A COMPLETE, MANUFACTURER-APPROVED SYSTEM USING CABLE TRAY MANUFACTURERS MATERIALS AND PARTS WHEN AVAILABLE FROM THE MANUFACTURER AND AS INTENDED. REFER TO DRAWING T4.01 FOR DETAILS. ALL CHANGES IN DIRECTION AND INTERSECTIONS SHALL USE PRE-MANUFACTURED OR FIELD-INSTALLED SWEEPS AND TEES. ALL SWEEPS AND TEES SHALL MAINTAIN A 1 FOOT MINIMUM RADIUS IN CHANGES OF DIRECTION.
- CABLE TRAY SHALL NOT PENETRATE WALLS. PROVIDE TRANSITION FROM CABLE TRAY TO LISTED FIRESTOP ASSEMBLIES IN ORDER TO PENETRATE FIRE/SMOKE WALLS. TRANSITION TO 4" CONDUITS/SLEEVES FOR NON-RATED WALLS. PROVIDE SUFFICIENT CONDUITS/SLEEVES TO ACCOMMODATE 100% VISUAL CABLE TRAY LOAD AT 50% VISUAL CONDUIT FILL.
- REFER TO ELECTRICAL DRAWINGS & SPECIFICATIONS FOR SHARED FLOOR BOXES & LOW VOLTAGE CONDUIT.
- PROVIDE BRACING TO MEET OSHPD SEISMIC REQUIREMENTS. REFER TO SHEET T4.02 FOR MORE INFORMATION.
- PROVIDE ALL OUTLET CONDUITS FROM WORK AREA OUTLETS, DEVICES OR PULL BOXES TO NEAREST CABLE TRAY.
- INSTALL CABLE TRAY @ 8" ABOVE CEILING.

KEY PLAN



#C10-#85046
650 OPPER ST.
ESCONDIDO, CA 92029
(760) 746-1003
FAX (760) 746-4619



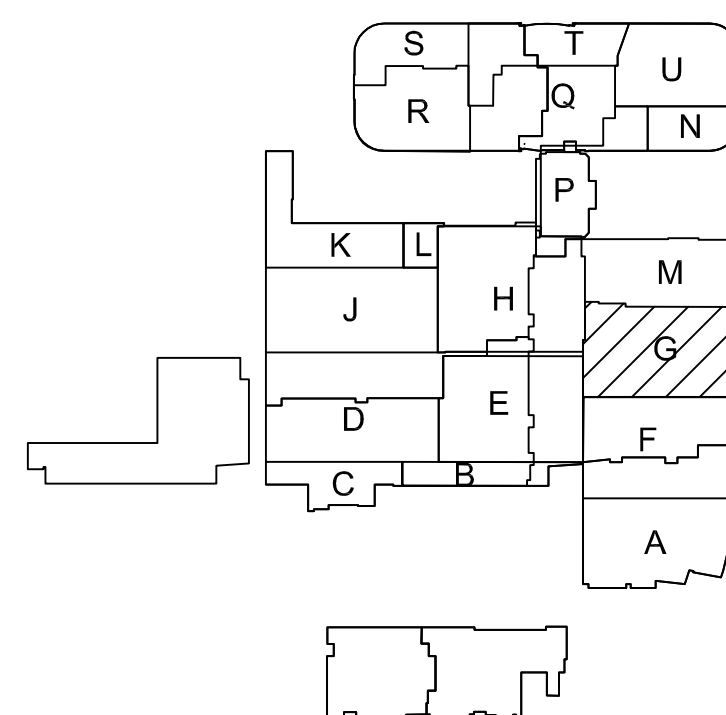
SHEET KEYNOTES

- 12"W X 6"H CABLE RUNWAY
- 24"W X 6"H CABLE RUNWAY
- 18"W X 6"H CABLE RUNWAY
- CABLES ROUTED WITHIN CASEWORK/MILLWORK. PROVIDE 1-1/4" CONDUIT AT WALL FOR ROUTING INTO CASEWORK/MILLWORK RACEWAY. TERMINATE CONDUIT ONTO TWO GANG BACKBOX WITH A ONE-GANG REDUCER RING.

GENERAL SHEET NOTES

- THE DRAWINGS ARE DIAGRAMMATIC ONLY AND MAY NOT SHOW ALL COMPONENTS, MATERIALS, OFFSETS, BENDS, ELBOWS AND OTHER SPECIFIC ELEMENTS THAT MAY BE REQUIRED FOR A COMPLETE INSTALLATION. THE CONTRACTOR SHALL BE RESPONSIBLE FOR PROVIDING ALL MATERIALS NEEDED FOR A COMPLETE AND FUNCTIONAL INSTALLATION.
- ELECTRIC EQUIPMENT AND DEVICES (E.G. PBX, NETWORK SWITCHES) ARE SHOWN FOR REFERENCE ONLY.
- REFER TO ARCHITECTURAL DETAIL PLANS FOR FINAL PATIENT ROOM DEVICE LOCATIONS. REFER TO ARCHITECTURAL DETAILS FOR OVERCOUNTER WAO HEIGHTS. REFER TO ARCHITECTURAL DETAILS FOR WALL-MOUNT WAO HEIGHTS.
- HORIZONTAL DATA/VOICE/VIDEO CABLE SHALL TERMINATE IN THE TECHNOLOGY ROOM ON THE SAME FLOOR AS THE WORK AREA OUTLETS.
- WORK AREA OUTLETS SHALL CONSIST OF SINGLE PLASTER REDUCING RINGS INSTALLED ON OVERSIZE DOUBLE GANG BACKBOXES, UNLESS OTHERWISE NOTED.
- TV COAX CABLES SHALL BE COILED IN THE RESPECTIVE TECHNOLOGY ROOMS WITH A 20' SERVICE LOOP PRIOR TO TERMINATIONS. COILS SHALL BE SECURED TO THE AUDIOVISUAL WALL FIELD FOR AV CONTRACTOR.
- COMMON LOW VOLTAGE CABLE RUNWAY IS 34" W X 6" HIGH. PROVIDE ALL MATERIALS AS NEEDED FOR A COMPLETE, MANUFACTURER-APPROVED SYSTEM USING CABLE TRAY MANUFACTURERS MATERIALS AND PARTS WHEN AVAILABLE FROM THE MANUFACTURER AND AS INTENDED. REFER TO DRAWING T4.01 FOR DETAILS. ALL CHANGES IN DIRECTION AND INTERSECTIONS SHALL USE PRE-MANUFACTURED OR FIELD-INSTALLED SWEEPS AND TEES. ALL SWEEPS AND TEES SHALL MAINTAIN A 1 FOOT MINIMUM RADIUS IN CHANGES OF DIRECTION.
- CABLE TRAY SHALL NOT PENETRATE WALLS. PROVIDE TRANSITION FROM CABLE TRAY TO LISTED FIRESTOP ASSEMBLIES IN ORDER TO PENETRATE FIRE/SMOKE WALLS. TRANSITION TO 4" CONDUITS/SLEEVES FOR NON-RATED WALLS. PROVIDE SUFFICIENT CONDUITS/SLEEVES TO ACCOMMODATE 100% VISUAL CABLE TRAY LOAD AT 55% VISUAL CONDUIT FILL.
- REFER TO ELECTRICAL DRAWINGS & SPECIFICATIONS FOR SHARED FLOOR BOXES & LOW VOLTAGE CONDUIT.
- PROVIDE BRACING TO MEET OSHPD SEISMIC REQUIREMENTS. REFER TO SHEET T4.02 FOR MORE INFORMATION.
- ALL OUTLET CONDUITS FROM WORK AREA OUTLETS, DEVICES OR PULL BOXES TO NEAREST CABLE TRAY.
- INSTALL CABLE TRAY @ 8" ABOVE CEILING.

KEY PLAN



PROJECT: **CHILDREN'S HOSPITAL
OF ORANGE COUNTY - TOWER II**

ADDRESS: 455 South Main Street
Orange, CA 92668-3874

W.O. NO.: 12684

PROPRIETARY STATEMENT
THESE DRAWING DOCUMENTS HEREIN ATTACHED ARE THE
PROPERTY OF BERGELECTRIC CORPORATION. ANY REUSE OR
REPRODUCTION OF THESE DOCUMENTS WITHOUT WRITTEN
PERMISSION OF BERGELECTRIC CORPORATION IS STRICTLY
FORBIDDEN. ALL RIGHTS RESERVED.

DRAWN BY:
J. RAMIREZ

DESIGN SUPERVISOR:

INSTALL SUPERVISOR:
Scott Adams
Tel Data Systems
Bergelectric Corporation
650 Oppen Street
Escondido, CA 92029

REVISION:
05-30-12 RECORD DRAWINGS

SHEET TITLE:

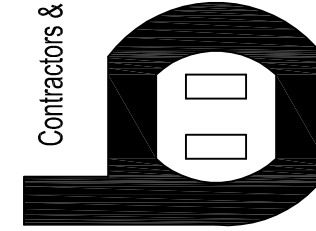
TELECOM
FLOOR PLAN
LEVEL 1
AREA-G

SCALE:
1/4"=1'0"

DRAWING NO.:

**T3.1G
RECORD
DRAWING**

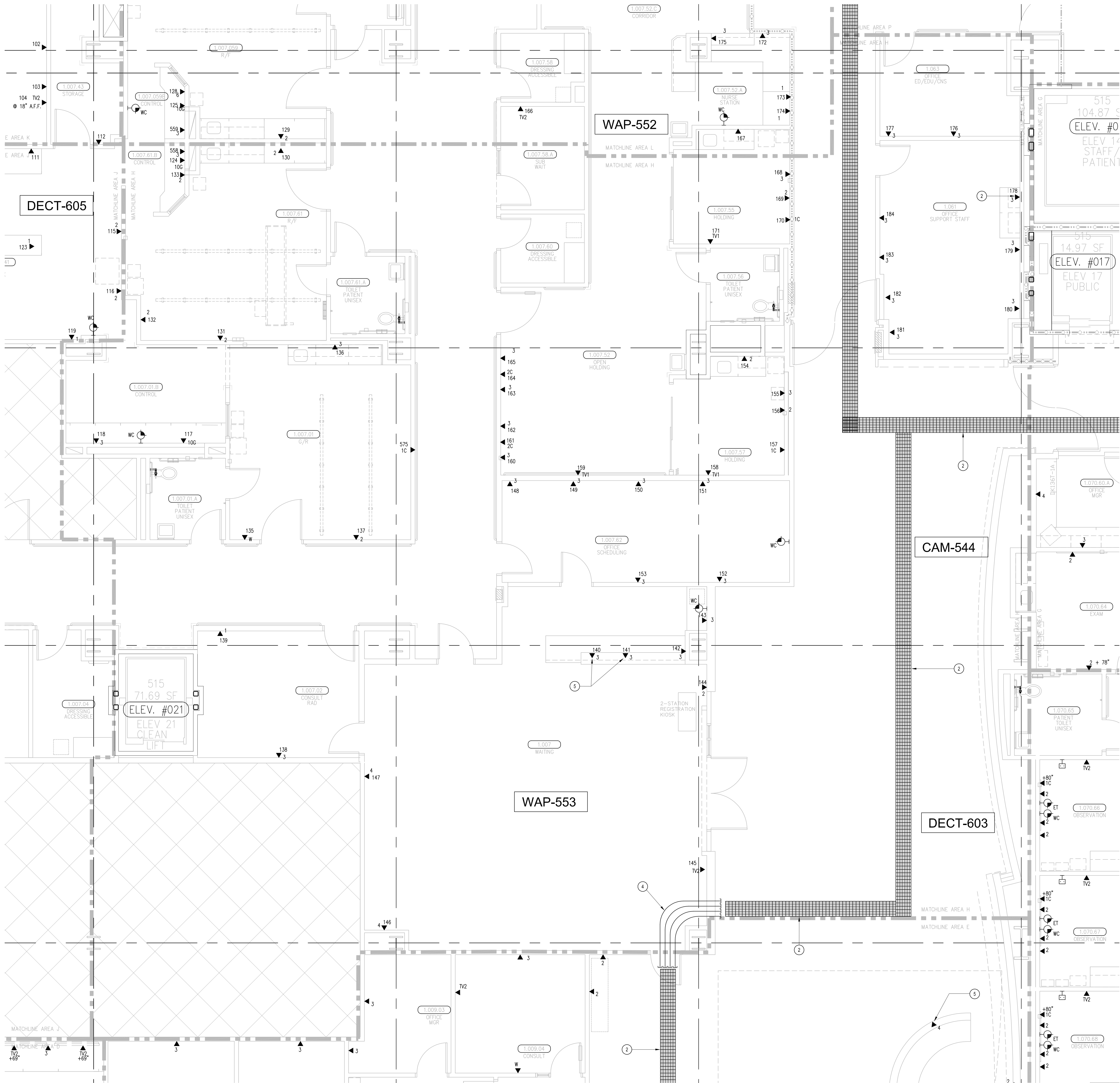
Bergelectric Corp.
Contractors & Engineers



05-30-12 RECORD DRAWINGS
BANC 10-485046
650 OPPEN ST.
ESCONDIDO, CA 92029

(760) 745-1033
FAX (760) 745-4619

T3 LEVEL 1 - TELECOM PLAN - AREA G
1/4" = 1'-0"



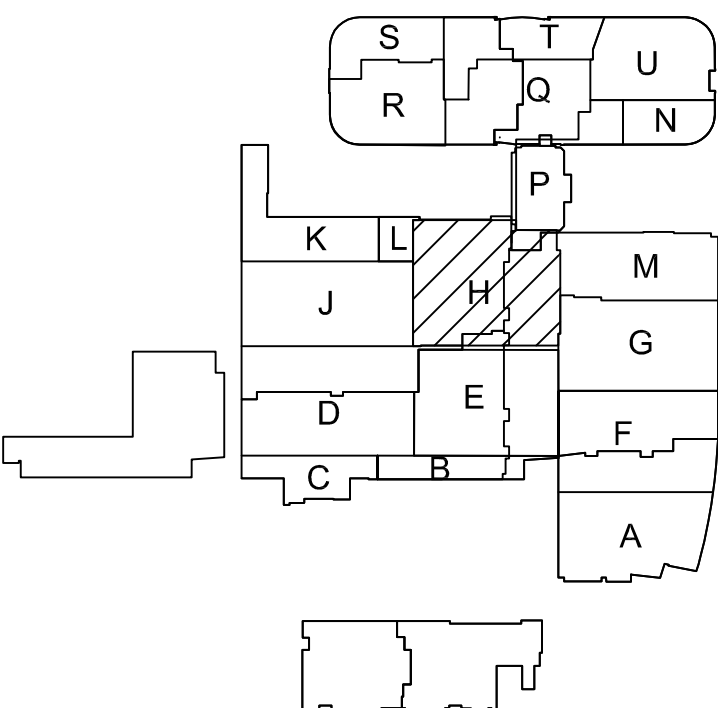
SHEET KEYNOTES

- 12"W X 6"H CABLE RUNWAY
- 24"W X 6"H CABLE RUNWAY
- 18"W X 6"H CABLE RUNWAY
- PROVIDE TWELVE (12) 4" CONDUITS WITH A MINIMUM OF (6) EMPTY CONDUITS UPON COMPLETION.
- CABLES ROUTED WITHIN CASEWORK/MILLWORK. PROVIDE 1-1/4" CONDUIT AT WALL FOR ROUTING INTO CASEWORK/MILLWORK RACEWAY. TERMINATE CONDUIT ONTO A TWO-GANG BACKBOX WITH A ONE-GANG REDUCER RING.

GENERAL SHEET NOTES

- THE DRAWINGS ARE DIAGRAMMATIC ONLY AND MAY NOT SHOW ALL COMPONENTS, MATERIALS, OFFSETS, BENDS, ELBOWS AND OTHER SPECIFIC ELEMENTS THAT MAY BE REQUIRED FOR A COMPLETE INSTALLATION. THE CONTRACTOR SHALL BE RESPONSIBLE FOR PROVIDING ALL MATERIALS NEEDED FOR A COMPLETE AND FUNCTIONAL INSTALLATION.
- ELECTRIC EQUIPMENT AND DEVICES (E.G. PBX, NETWORK SWITCHES) ARE SHOWN FOR REFERENCE ONLY.
- REFER TO ARCHITECTURAL DETAIL PLANS FOR FINAL PATIENT ROOM DEVICE LOCATIONS. REFER TO ARCHITECTURAL DETAILS FOR OVERCOUNTER WAO HEIGHTS. REFER TO ARCHITECTURAL DETAILS FOR WALL-MOUNT WAO HEIGHTS.
- HORIZONTAL DATA/VOICE/VIDEO CABLE SHALL TERMINATE IN THE TECHNOLOGY ROOM ON THE SAME FLOOR AS THE WORK AREA OUTLETS.
- WORK AREA OUTLETS SHALL CONSIST OF SINGLE PLASTER REDUCING RINGS INSTALLED ON OVERSIZE DOUBLE GANG BACKBOXES, UNLESS OTHERWISE NOTED.
- TV COAX CABLES SHALL BE COILED IN THE RESPECTIVE TECHNOLOGY ROOMS WITH A 20' SERVICE LOOP PRIOR TO TERMINATIONS. COILS SHALL BE SECURED TO THE AUDIOVISUAL WALL FIELD FOR AV CONTRACTOR.
- COMMON LOW VOLTAGE CABLE TRAY IS SIZED AS INDICATED ON THE DRAWINGS. PROVIDE ALL MATERIALS AS NEEDED FOR A COMPLETE, MANUFACTURER-APPROVED SYSTEM USING CABLE TRAY MANUFACTURERS' MATERIALS AND PARTS WHEN AVAILABLE FROM THE MANUFACTURER AND AS INTENDED. REFER TO DRAWING T4.01 FOR DETAILS. ALL CHANGES IN DIRECTION AND INTERSECTIONS SHALL USE PRE-MANUFACTURED OR FIELD-INSTALLED SWEEPS AND TEES. ALL SWEEPS AND TEES SHALL MAINTAIN A 1 FOOT MINIMUM RADIUS IN CHANGES OF DIRECTION.
- CABLE TRAY SHALL NOT PENETRATE WALLS. PROVIDE TRANSITION FROM CABLE TRAY TO LISTED FIRESTOP ASSEMBLIES IN ORDER TO PENETRATE FIRESTOP WALLS. TRANSITION TO 4" CONDUITS/SLEEVES FOR NON-RATED WALLS. PROVIDE SUFFICIENT CONDUITS/SLEEVES TO ACCOMMODATE 100% VISUAL CABLE TRAY LOAD AT 50% VISUAL CONDUIT FILL.
- REFER TO ELECTRICAL DRAWINGS & SPECIFICATIONS FOR SHARED FLOOR BOXES & LOW VOLTAGE CONDUIT.
- PROVIDE BRACING TO MEET OSHPO SEISMIC REQUIREMENTS. REFER TO SHEET T4.02 FOR MORE INFORMATION.
- PROVIDE ALL OUTLET CONDUITS FROM WORK AREA OUTLETS, DEVICES OR PULL BOXES TO NEAREST CABLE TRAY.
- INSTALL CABLE TRAY @ 6" ABOVE CEILING.

KEY PLAN



T3 LEVEL 1 - TELECOM PLAN - AREA H

CHILDREN'S HOSPITAL OF ORANGE COUNTY - TOWER II

PROJECT:
ADDRESS:
W.O. NO.:

PROPRIETARY STATEMENT
THESE DRAWING DOCUMENTS HEREBY ATTACHED ARE THE
PROPERTY OF BERGLECTRIC CORPORATION ANY REUSE OR
REPRODUCTION OF THESE DOCUMENTS WITHOUT WRITTEN
PERMISSION OF BERGLECTRIC CORPORATION IS STRICTLY
FORBIDDEN. ALL RIGHTS RESERVED.

DRAWN BY:
J. RAMIREZ

DESIGN SUPERVISOR:

INSTALL SUPERVISOR:
Scott Adams
Tel Data Systems
Berglectric Corporation
650 Opper Street
Escondido, CA 92029

REVISIONS:
05-30-12 RECORD DRAWINGS

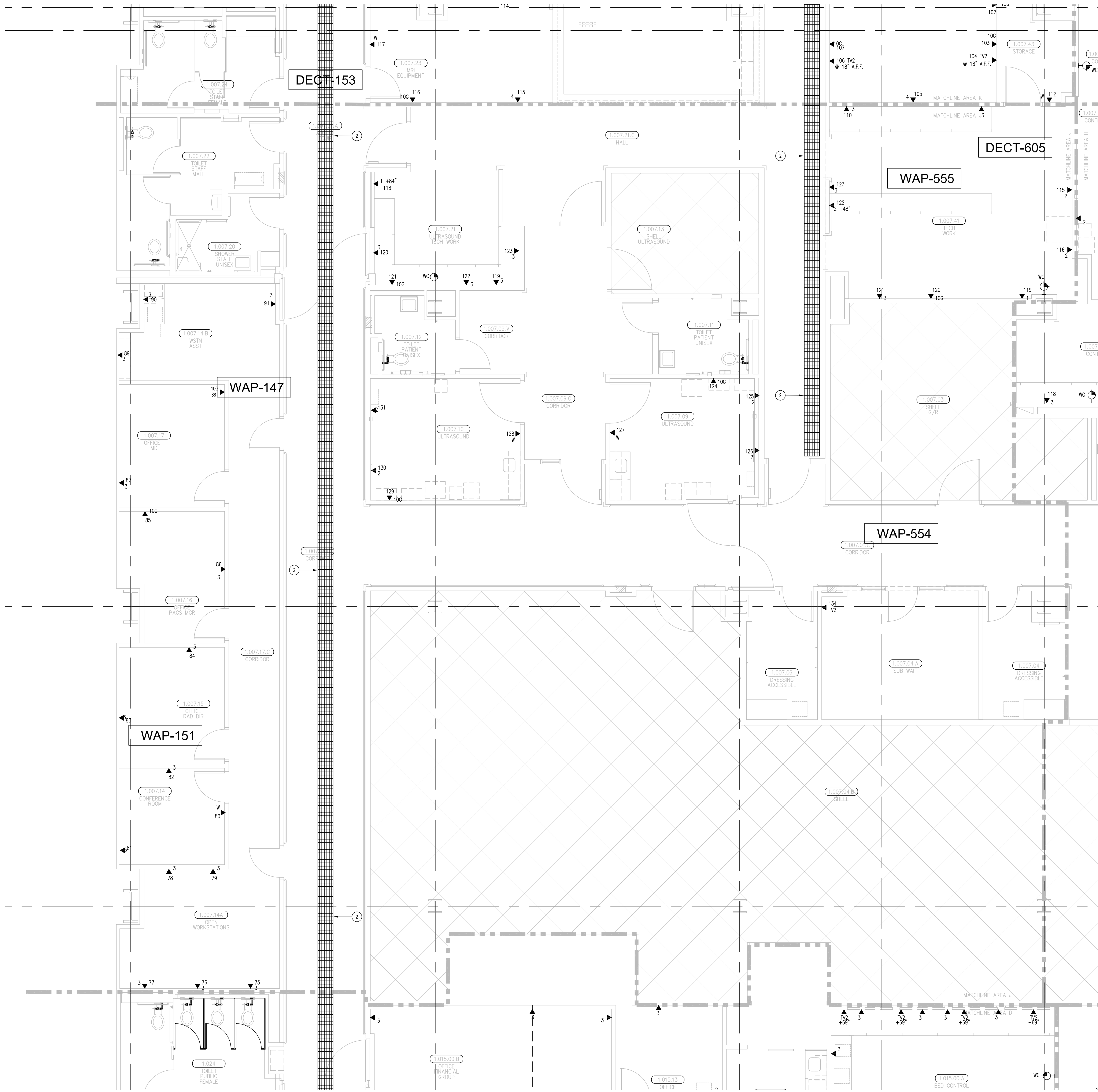
SHEET TITLE:

TELECOM
FLOOR PLAN
LEVEL 1
AREA-H

SCALE:
1/4"=1'0"

DRAWING NO.:

T3.1H
RECORD
DRAWING



T3 LEVEL 1 - TELECOM PLAN - AREA J
1/4" = 1'-0"

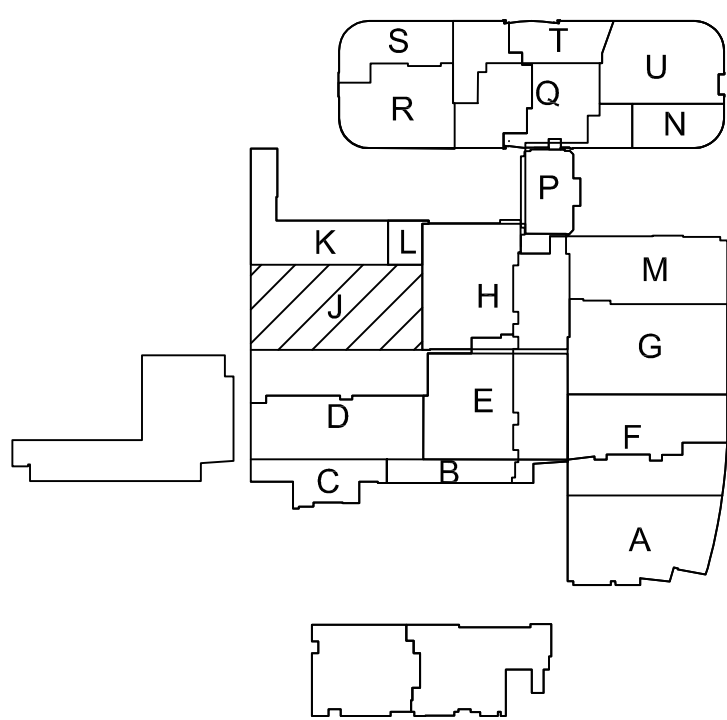
SHEET KEYNOTES

- 12" W X 6" H CABLE RUNWAY
- 24" W X 6" H CABLE RUNWAY
- 18" W X 6" H CABLE RUNWAY

GENERAL SHEET NOTES

- THE DRAWINGS ARE DIAGRAMMATIC ONLY AND MAY NOT SHOW ALL COMPONENTS, MATERIALS, OFFSETS, BENDS, ELBOWS AND OTHER SPECIFIC ELEMENTS THAT MAY BE REQUIRED FOR A COMPLETE INSTALLATION. THE CONTRACTOR SHALL BE RESPONSIBLE FOR PROVIDING ALL MATERIALS NEEDED FOR A COMPLETE AND FUNCTIONAL INSTALLATION.
- ELECTRIC EQUIPMENT AND DEVICES (E.G. PBX, NETWORK SWITCHES) ARE SHOWN FOR REFERENCE ONLY.
- REFER TO ARCHITECTURAL DETAIL PLANS FOR FINAL PATIENT ROOM DEVICE LOCATIONS. REFER TO ARCHITECTURAL DETAILS FOR OVERCOUNTER WAO HEIGHTS. REFER TO ARCHITECTURAL DETAILS FOR WALL-MOUNT WAO HEIGHTS.
- HORIZONTAL DATA/VOICE/VIDEO CABLE SHALL TERMINATE IN THE TECHNOLOGY ROOM ON THE SAME FLOOR AS THE WORK AREA OUTLETS.
- WORK AREA OUTLETS SHALL CONSIST OF SINGLE PLASTER REDUCING RINGS INSTALLED ON OVERSIZE DOUBLE GANG BACKBOXES, UNLESS OTHERWISE NOTED.
- TV COAX CABLES SHALL BE COILED IN THE RESPECTIVE TECHNOLOGY ROOMS WITH A 20' SERVICE LOOP PRIOR TO TERMINATIONS. COILS SHALL BE SECURED TO THE AUDIO/VISUAL WALL FIELD FOR AV CONTRACTOR.
- COMMON LOW VOLTAGE CABLE RUNWAY IS 24" W X 6" H HIGH. PROVIDE ALL MATERIALS AS NEEDED FOR A COMPLETE, MANUFACTURER-APPROVED SYSTEM USING CABLE TRAY MANUFACTURERS' MATERIALS AND PARTS WHEN AVAILABLE FROM THE MANUFACTURER AND AS INTENDED. REFER TO DRAWING T4.01 FOR DETAILS. ALL CHANGES IN DIRECTION AND INTERSECTIONS SHALL USE PRE-MANUFACTURED OR FIELD-INSTALLED SWEEPS AND TEES. ALL SWEEPS AND TEES SHALL MAINTAIN A 1' FOOT MINIMUM RADIUS IN CHANGES OF DIRECTION.
- CABLE TRAY SHALL NOT PENETRATE WALLS. PROVIDE TRANSITION FROM CABLE TRAY TO LISTED FIRESTOP ASSEMBLIES IN ORDER TO PENETRATE FIRE/SMOKE WALLS. TRANSITION TO 4" CONDUITS/SLEEVES FOR NON-RATED WALLS. PROVIDE SUFFICIENT CONDUITS/SLEEVES TO ACCOMMODATE 100% VISUAL CABLE TRAY LOAD AT 50% VISUAL CONDUIT FILL.
- REFER TO ELECTRICAL DRAWINGS & SPECIFICATIONS FOR SHARED FLOOR BOXES & LOW VOLTAGE CONDUIT.
- PROVIDE BRACING TO MEET OSHPO SEISMIC REQUIREMENTS. REFER TO SHEET T4.02 FOR MORE INFORMATION.
- PROVIDE ALL OUTLET CONDUITS FROM WORK AREA OUTLETS, DEVICES OR PULL BOXES TO NEAREST CABLE TRAY.
- INSTALL CABLE TRAY @ 8' ABOVE CEILING.

KEY PLAN



PROJECT: CHILDREN'S HOSPITAL
OF ORANGE COUNTY - TOWER II

ADDRESS: 455 South Main Street
Orange, CA 92668-3874
W.O. NO.: 12684

PROPRIETARY STATEMENT
THESE DRAWINGS AND DOCUMENTS HEREIN ATTACHED ARE THE PROPERTY OF BERGELECTRIC CORPORATION. ANY REUSE OR REPRODUCTION OF THESE DOCUMENTS WITHOUT WRITTEN PERMISSION OF BERGELECTRIC CORPORATION IS STRICTLY FORBIDDEN. ALL RIGHTS RESERVED.

DRAWN BY:
J. RAMIREZ

DESIGN SUPERVISOR:

INSTALL SUPERVISOR:
Scott Adams
Tel Data Systems
Bergelectric Corporation
650 Oppen Street
Escondido, CA 92029

REVISIONS:
05-30-12 RECORD DRAWINGS

SHEET TITLE:

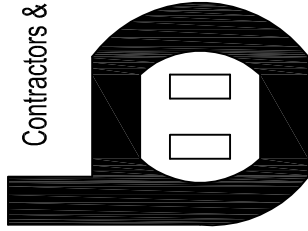
**TELECOM
FLOOR PLAN
LEVEL 1
AREA-J**

SCALE:
1/4"=1'0"

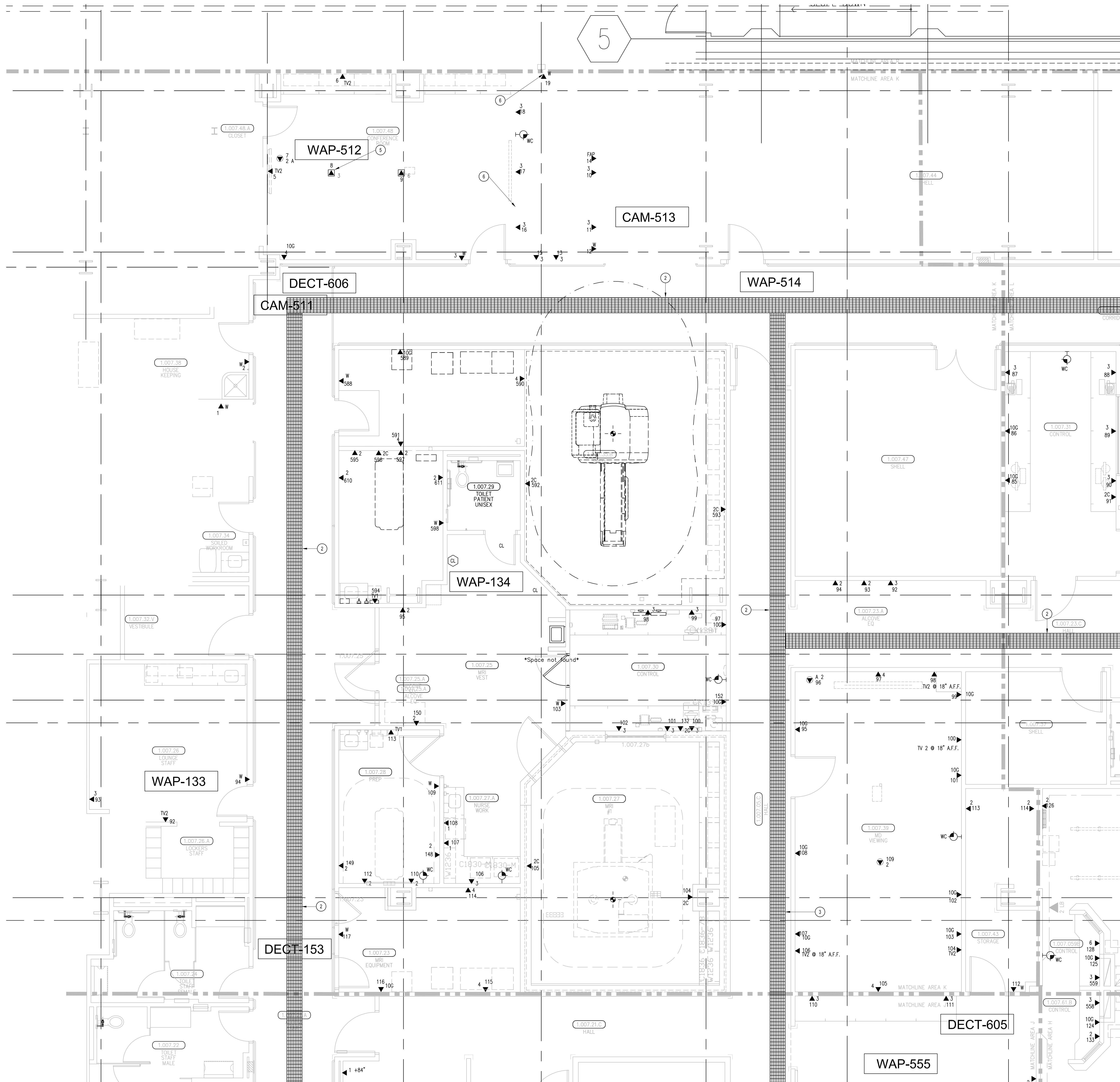
DRAWING NO.:

**T3.1J
RECORD
DRAWING**

Bergelectric Corp.
Contractors & Engineers



HC10-485046
650 OPPEN ST.
ESCONDIDO, CA 92029
(760) 746-1033
FAX (760) 746-4619



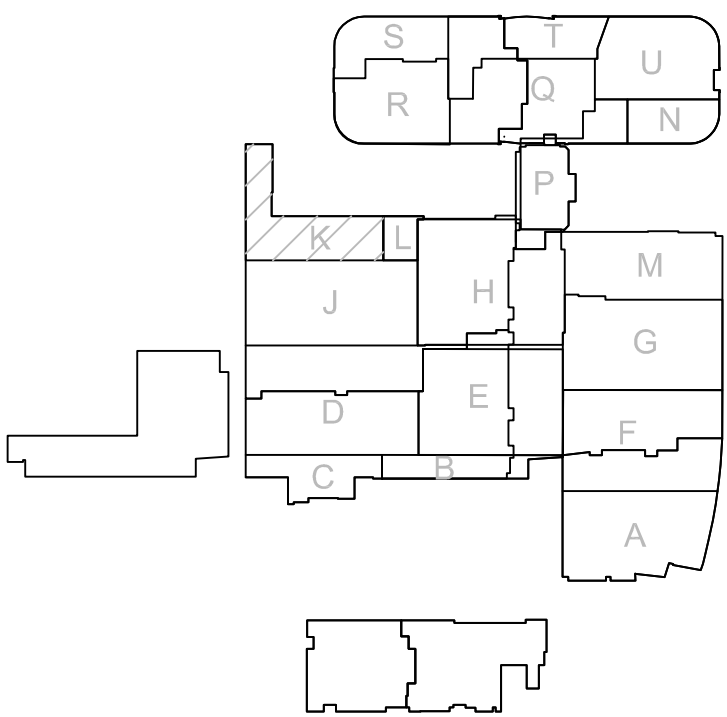
SHEET KEYNOTES

- 12" W X 6" H CABLE RUNWAY
- 24" W X 6" H CABLE RUNWAY
- 18" W X 6" H CABLE RUNWAY
- MOUNT WAO IN DOUBLE-GANG BACKBOX; STUB ONE (1) 1" EMT TO ACCESSIBLE CEILING. COORDINATE CABLING AND BACKBOX INSTALLATION WITH AUDIOVISUAL REQUIREMENTS AS DESCRIBED ON AV SHEET TA3.1C. COORDINATE WITH DETAIL 3 ON AV SHEET TA5.01 FOR MOUNTING HEIGHT.
- COORDINATE FLOOR BOX INSTALLATION WITH AV SHEET TA3.1C.
- VOICE OUTLETS, CROSS-CONNECT TO SERVICE PROVIDER POTS LINES BYPASSING PBX EQUIPMENT.

GENERAL SHEET NOTES

- THE DRAWINGS ARE DIAGRAMMATIC ONLY AND MAY NOT SHOW ALL COMPONENTS, MATERIALS, OFFSETS, BENDS, ELBOWS AND OTHER SPECIFIC ELEMENTS THAT MAY BE REQUIRED FOR A COMPLETE INSTALLATION. THE CONTRACTOR SHALL BE RESPONSIBLE FOR PROVIDING ALL MATERIALS NEEDED FOR A COMPLETE AND FUNCTIONAL INSTALLATION.
- ELECTRIC EQUIPMENT AND DEVICES (E.G. PBX, NETWORK SWITCHES) ARE SHOWN FOR REFERENCE ONLY.
- REFER TO ARCHITECTURAL DETAIL PLANS FOR FINAL PATIENT ROOM DEVICE LOCATIONS. REFER TO ARCHITECTURAL DETAILS FOR OVERCOUNTER WAO HEIGHTS. REFER TO ARCHITECTURAL DETAILS FOR WALL-MOUNT WAO HEIGHTS.
- HORIZONTAL DATA/VOICE/VIDEO CABLE SHALL TERMINATE IN THE TECHNOLOGY ROOM ON THE SAME FLOOR AS THE WORK AREA OUTLETS.
- WORK AREA OUTLETS SHALL CONSIST OF SINGLE PLASTER REDUCING RINGS INSTALLED ON OVERSIZE DOUBLE GANG BACKBOXES, UNLESS OTHERWISE NOTED.
- TV COAX CABLES SHALL BE COILED IN THE RESPECTIVE TECHNOLOGY ROOMS WITH A 2" SERVICE LOOP PRIOR TO TERMINATIONS. COILS SHALL BE SECURED TO THE AUDIOVISUAL WALL FIELD FOR AV CONTRACTOR.
- COMMON LOW VOLTAGE CABLE RUNWAY IS 24" W X 6" H HIGH. PROVIDE ALL MATERIALS AS NEEDED FOR A COMPLETE, MANUFACTURER-APPROVED SYSTEM USING CABLE TRAY MANUFACTURERS' MATERIALS AND PARTS WHEN AVAILABLE FROM THE MANUFACTURER AND AS INTENDED. REFER TO DRAWING TA.01 FOR DETAILS. ALL CHANGES IN DIRECTION AND INTERSECTIONS SHALL USE PRE-MANUFACTURED OR FIELD-INSTALLED SWEEPS AND TEES. ALL SWEEPS AND TEES SHALL MAINTAIN A 1' FOOT MINIMUM RADIUS IN CHANGES OF DIRECTION.
- CABLE TRAY SHALL NOT PENETRATE WALLS. PROVIDE TRANSITION FROM CABLE TRAY TO LISTED FIRESTOP ASSEMBLIES IN ORDER TO PENETRATE FIRE/SMOKE WALLS. TRANSITION TO 4" CONDUITS/SLEEVES FOR NON-RATED WALLS. PROVIDE SUFFICIENT CONDUITS/SLEEVES TO ACCOMMODATE 100% VISUAL CABLE TRAY LOAD AT 50% VISUAL CONDUIT FILL.
- REFER TO ELECTRICAL DRAWINGS & SPECIFICATIONS FOR SHARED FLOOR BOXES & LOW VOLTAGE CONDUIT.
- PROVIDE BRACING TO MEET OSHPO SEISMIC REQUIREMENTS. REFER TO SHEET TA.02 FOR MORE INFORMATION.
- PROVIDE ALL OUTLET CONDUITS FROM WORK AREA OUTLETS, DEVICES OR PULL BOXES TO NEAREST CABLE TRAY.
- INSTALL CABLE TRAY @ 8" ABOVE CEILING.

KEY PLAN



CHILDREN'S HOSPITAL OF ORANGE COUNTY - TOWER II

PROJECT:

ADDRESS: 455 South Main Street
Orange, CA 92668-3874

W.O. NO.:

PROPRIETARY STATEMENT

THESE DRAWINGS AND DOCUMENTS HEREIN ATTACHED ARE THE PROPERTY OF BERGLECTRIC CORPORATION. ANY REUSE OR REPRODUCTION OF THESE DOCUMENTS WITHOUT WRITTEN PERMISSION OF BERGLECTRIC CORPORATION IS STRICTLY FORBIDDEN. ALL RIGHTS RESERVED.

DRAWN BY:

J. RAMIREZ

DESIGN SUPERVISOR:

INSTALL SUPERVISOR:

Scott Adams
Tel Data Systems
Berglectric Corporation
650 Oppen Street
Escondido, CA 92029

REVISION:

05-30-12 RECORD DRAWINGS

SHEET TITLE:

TELECOM
FLOOR PLAN
LEVEL 1
AREA-K

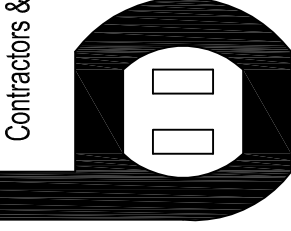
SCALE:

1/4"=1'0"

DRAWING NO.:

T3.1K
RECORD
DRAWING

Berglectric Corp.
Contractors & Engineers

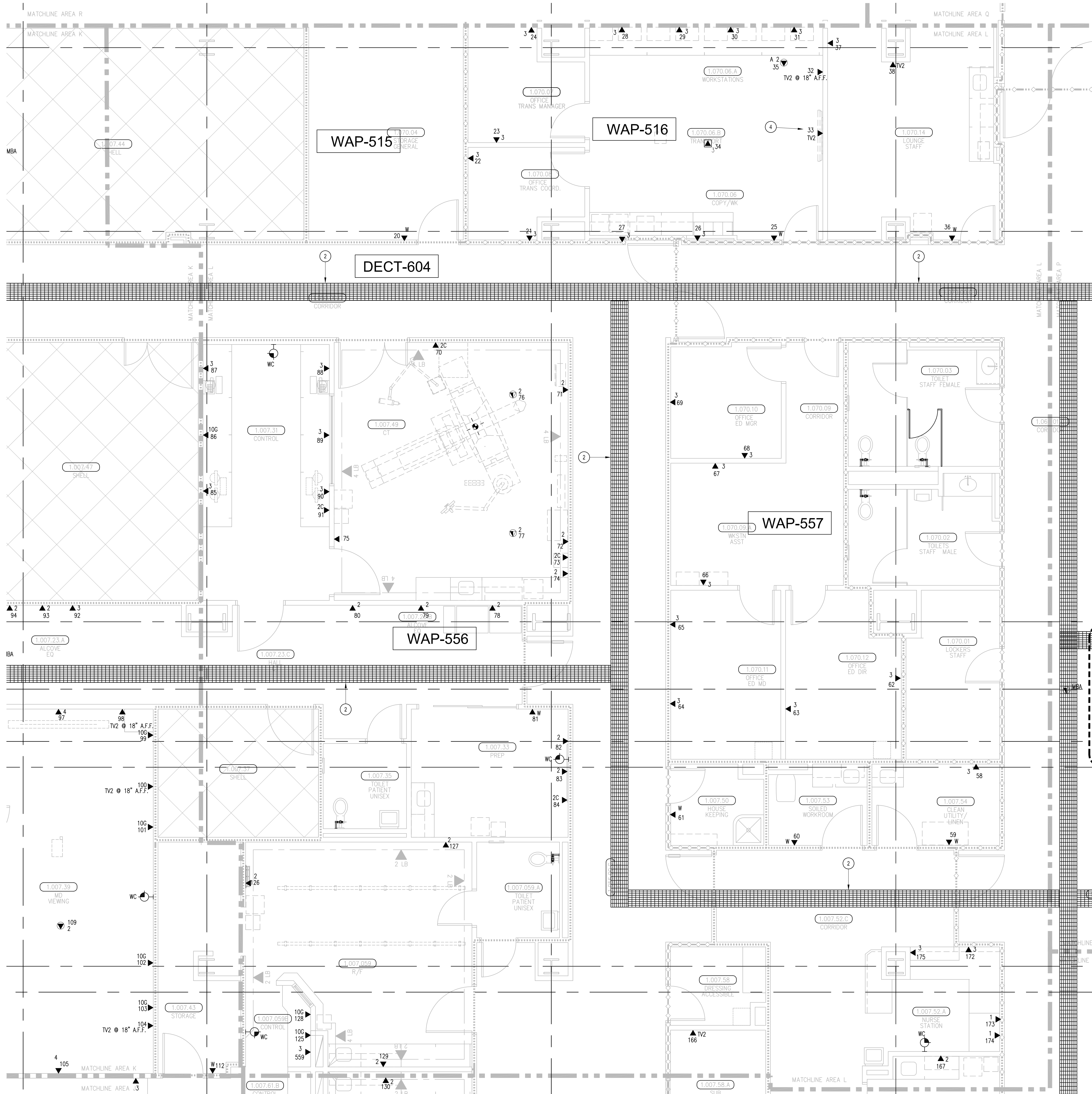


AC 10-485046
1760 74E-1033
650 OPPEN ST.
ESCONDIDO, CA 92029
FAX (760) 74E-4619

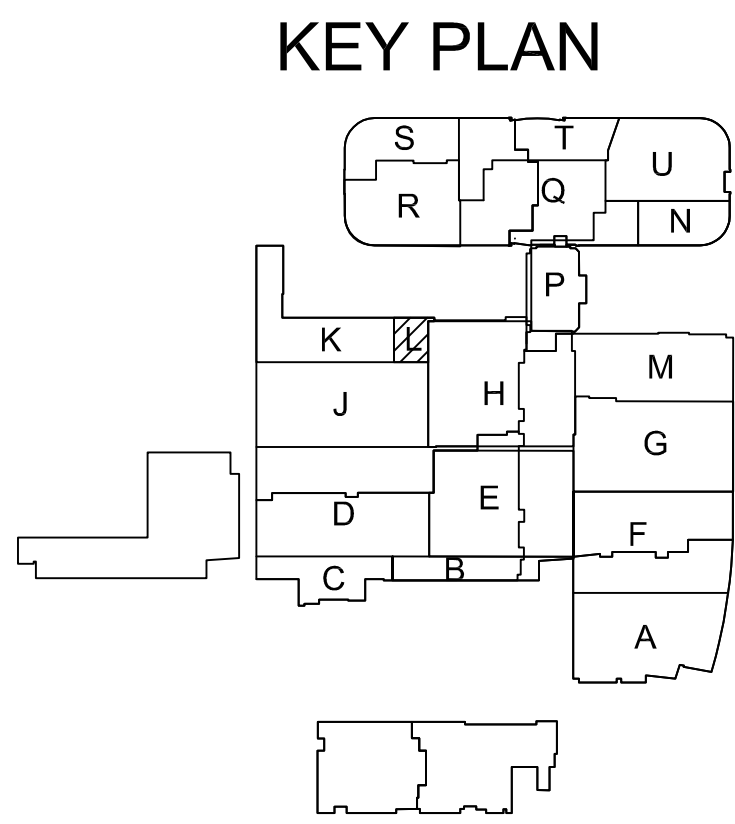
T3

LEVEL 1 - TELECOM PLAN - AREA K

1/4" = 1'-0"



T3 LEVEL 1 - TELECOM PLAN - AREA L
1/4" = 1'-0"



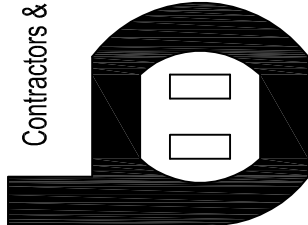
SHEET KEYNOTES

- 12"W X 6"H CABLE RUNWAY
- 24"W X 6"H CABLE RUNWAY
- 18"W X 6"H CABLE RUNWAY
- MOUNT WAO IN DOUBLE-GANG BACKBOX. STUB ONE (1) 1" EMT TO ACCESSIBLE CEILING. COORDINATE CABLING AND BACKBOX INSTALLATION WITH AUDIOVISUAL REQUIREMENTS AS DESCRIBED ON AV SHEET TAB 1C. COORDINATE WITH DETAIL 3 ON AV SHEET TAB 01 FOR MOUNTING HEIGHT.

GENERAL SHEET NOTES

- THE DRAWINGS ARE DIAGRAMMATIC ONLY AND MAY NOT SHOW ALL COMPONENTS, MATERIALS, OFFSETS, BENDS, ELBOWS AND OTHER SPECIFIC ELEMENTS THAT MAY BE REQUIRED FOR A COMPLETE INSTALLATION. THE CONTRACTOR SHALL BE RESPONSIBLE FOR PROVIDING ALL MATERIALS NEEDED FOR A COMPLETE AND FUNCTIONAL INSTALLATION.
- ELECTRIC EQUIPMENT AND DEVICES (E.G. PBX, NETWORK SWITCHES) ARE SHOWN FOR REFERENCE ONLY.
- REFER TO ARCHITECTURAL DETAIL PLANS FOR FINAL PATIENT ROOM DEVICE LOCATIONS. REFER TO ARCHITECTURAL DETAILS FOR OVERCOUNTER WAO HEIGHTS. REFER TO ARCHITECTURAL DETAILS FOR WALL-MOUNT WAO HEIGHTS.
- HORIZONTAL DATA/VOICE/VIDEO CABLE SHALL TERMINATE IN THE TECHNOLOGY ROOM ON THE SAME FLOOR AS THE WORK AREA OUTLETS.
- WORK AREA OUTLETS SHALL CONSIST OF SINGLE PLASTER REDUCING RINGS INSTALLED ON OVERSIZE DOUBLE GANG BACKBOXES, UNLESS OTHERWISE NOTED.
- TV COAX CABLES SHALL BE COILED IN THE RESPECTIVE TECHNOLOGY ROOMS WITH A 20' SERVICE LOOP PRIOR TO TERMINATIONS. COILS SHALL BE SECURED TO THE AUDIOVISUAL WALL FIELD FOR AV CONTRACTOR.
- COMMON LOW VOLTAGE CABLE RUNWAY IS 24" W X 6" HIGH. PROVIDE ALL MATERIALS AS NEEDED FOR A COMPLETE, MANUFACTURER-APPROVED SYSTEM USING CABLE TRAY MANUFACTURERS' MATERIALS AND PARTS WHEN AVAILABLE FROM THE MANUFACTURER AND AS INTENDED. REFER TO DRAWING T4.01 FOR DETAILS. ALL CHANGES IN DIRECTION AND INTERSECTIONS SHALL USE PRE-MANUFACTURED OR FIELD-INSTALLED SWEEPS AND TEES. ALL SWEEPS AND TEES SHALL MAINTAIN A 1' FOOT MINIMUM RADIUS IN CHANGES OF DIRECTION.
- CABLE TRAY SHALL NOT PENETRATE WALLS. PROVIDE TRANSITION FROM CABLE TRAY TO LISTED FIRESTOP ASSEMBLIES IN ORDER TO PENETRATE FIRE/SMOKE WALLS. TRANSITION TO 4" CONDUITS/SLEEVES FOR NON-RATED WALLS. PROVIDE SUFFICIENT CONDUITS/SLEEVES TO ACCOMMODATE 100% VISUAL CABLE TRAY LOAD AT 50% VISUAL CONDUIT FILL.
- REFER TO ELECTRICAL DRAWINGS & SPECIFICATIONS FOR SHARED FLOOR BOXES & LOW VOLTAGE CONDUIT.
- PROVIDE BRACING TO MEET OSHPD SEISMIC REQUIREMENTS. REFER TO SHEET T4.02 FOR MORE INFORMATION.
- PROVIDE ALL OUTLET CONDUITS FROM WORK AREA OUTLETS, DEVICES OR PULL BOXES TO NEAREST CABLE TRAY.
- INSTALL CABLE TRAY @ 8" ABOVE CEILING.

Bergelectric Corp.
Contractors & Engineers



HC10-485046
650 OPPER ST.
ESCONDIDO, CA 92029
(760) 746-1033
FAX (760) 746-4619

**CHILDREN'S HOSPITAL
OF ORANGE COUNTY - TOWER II**

PROJECT:

ADDRESS: 455 South Main Street
Orange, CA 92668-3874
W.O. NO.: 12684

PROPRIETARY STATEMENT
THESE DRAWINGS AND DOCUMENTS HEREIN ATTACHED ARE THE PROPERTY OF BERGELECTRIC CORPORATION. ANY REUSE OR REPRODUCTION OF THESE DOCUMENTS WITHOUT WRITTEN PERMISSION OF BERGELECTRIC CORPORATION IS STRICTLY FORBIDDEN. ALL RIGHTS RESERVED.

DRAWN BY:
J. RAMIREZ

DESIGN SUPERVISOR:

INSTALL SUPERVISOR:

Scott Adams
Tel Data Systems
Bergelectric Corporation
650 Opper Street
Escondido, CA 92029

REVISION:

05-30-12 RECORD DRAWINGS

SHEET TITLE:

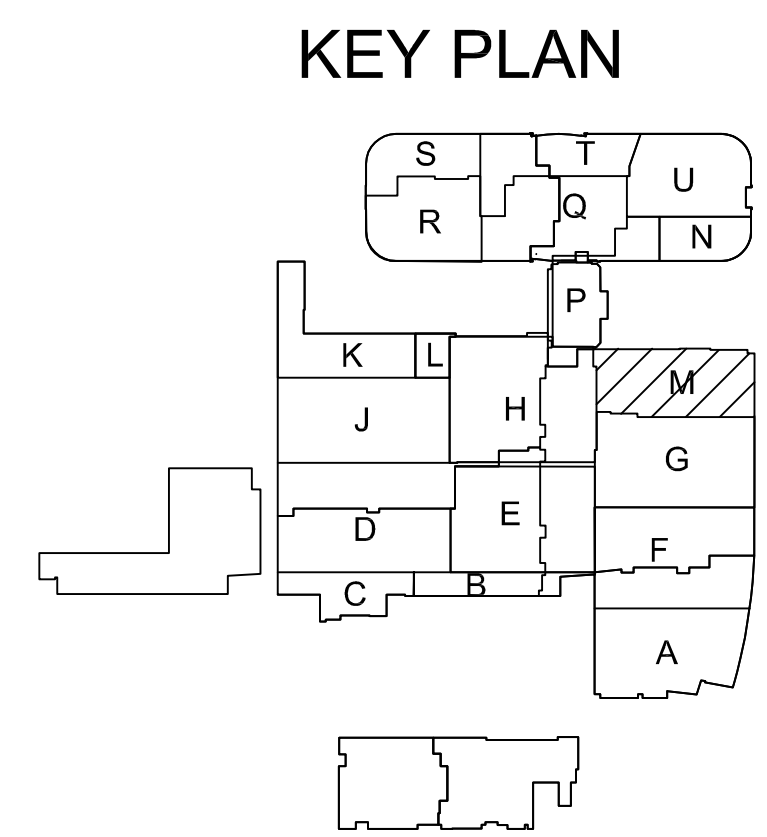
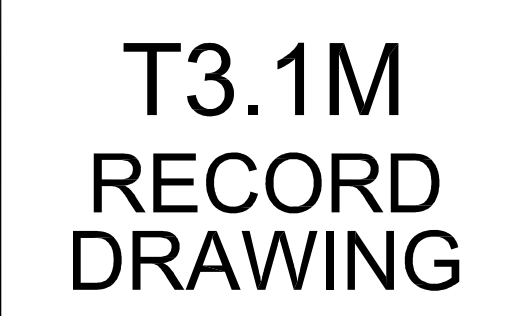
TELECOM
FLOOR PLAN
LEVEL 1
AREA-L

SCALE:

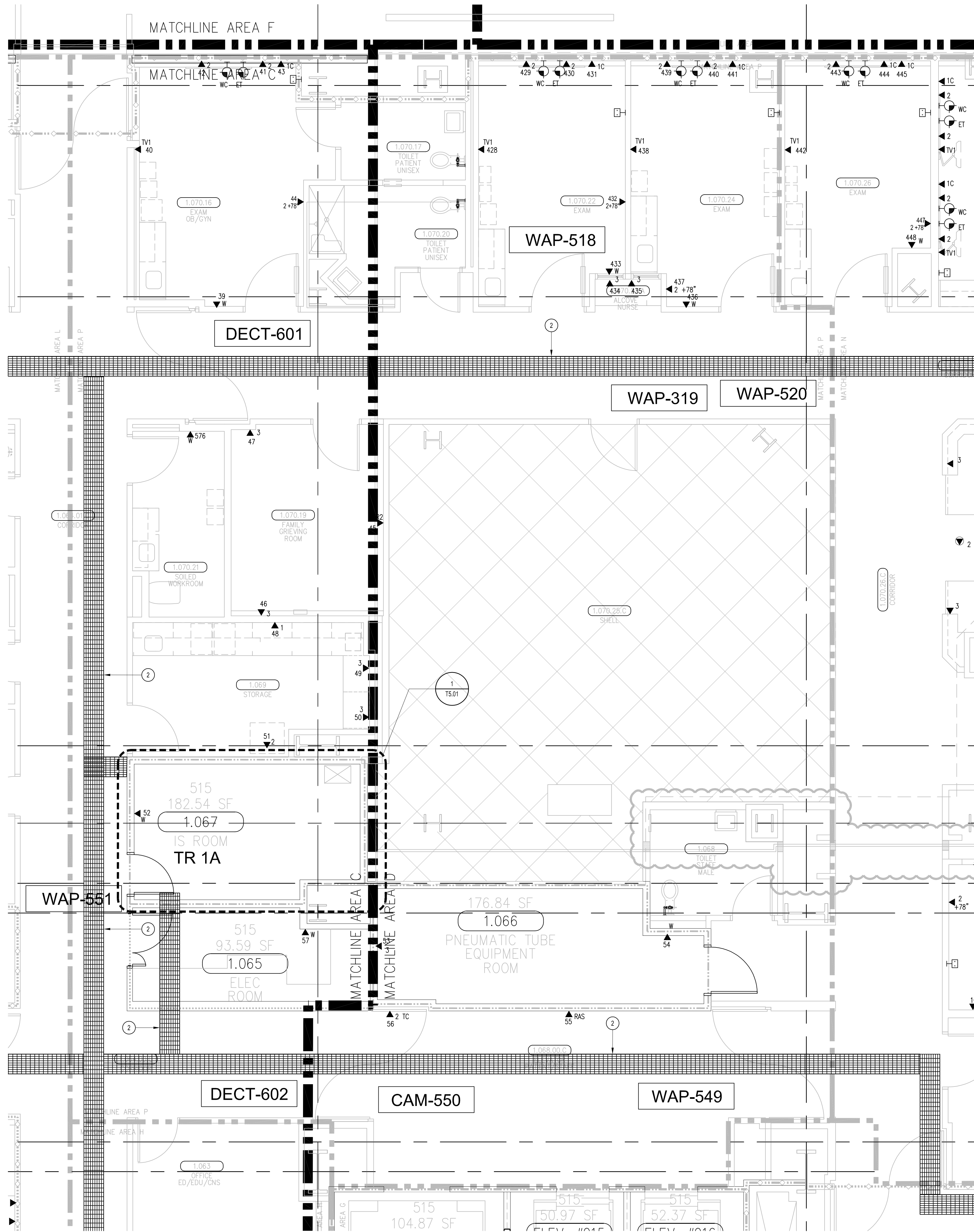
1/4"=1'0"

DRAWING NO.:

**T3.1L
RECORD
DRAWING**



T3 LEVEL 1 - TELECOM PLAN - AREA P



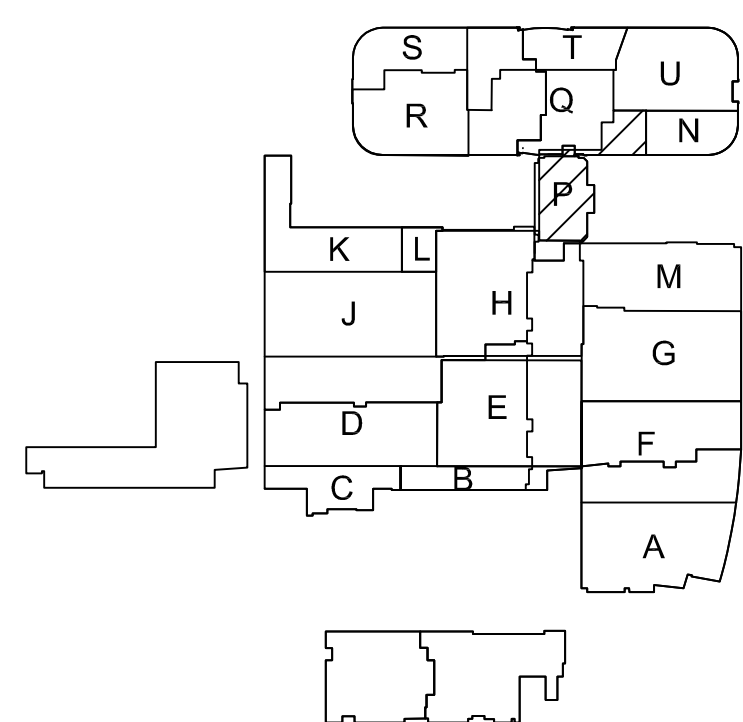
SHEET KEYNOTES

- 12" W X 6" H CABLE RUNWAY
- 24" W X 6" H CABLE RUNWAY
- 18" W X 6" H CABLE RUNWAY

GENERAL SHEET NOTES

- THE DRAWINGS ARE DIAGRAMMATIC ONLY AND MAY NOT SHOW ALL COMPONENTS, MATERIALS, OFFSETS, BENDS, ELBOWS AND OTHER SPECIFIC ELEMENTS THAT MAY BE REQUIRED FOR A COMPLETE INSTALLATION. THE CONTRACTOR SHALL BE RESPONSIBLE FOR PROVIDING ALL MATERIALS NEEDED FOR A COMPLETE AND FUNCTIONAL INSTALLATION.
- ELECTRIC EQUIPMENT AND DEVICES (E.G. P.B.X. NETWORK SWITCHES) ARE SHOWN FOR REFERENCE ONLY.
- REFER TO ARCHITECTURAL DETAIL PLANS FOR FINAL PATIENT ROOM DEVICE LOCATIONS. REFER TO ARCHITECTURAL DETAILS FOR OVERCOUNTER WAO HEIGHTS. REFER TO ARCHITECTURAL DETAILS FOR WALL-MOUNT WAO HEIGHTS.
- HORIZONTAL DATA/VOICE/VIDEO CABLE SHALL TERMINATE IN THE TECHNOLOGY ROOM ON THE SAME FLOOR AS THE WORK AREA OUTLETS.
- WORK AREA OUTLETS SHALL CONSIST OF SINGLE PLASTER REDUCING RINGS INSTALLED ON OVERSIZE DOUBLE GANG BACKBOXES, UNLESS OTHERWISE NOTED.
- TV COAX CABLES SHALL BE COILED IN THE RESPECTIVE TECHNOLOGY ROOMS WITH A 20' SERVICE LOOP PRIOR TO TERMINATIONS. COILS SHALL BE SECURED TO THE AUDIOVISUAL WALL FIELD FOR AV CONTRACTOR.
- COMMON LOW VOLTAGE CABLE RUNWAY IS 24" W X 6" H. PROVIDE ALL MATERIALS AS NEEDED FOR A COMPLETE, MANUFACTURER-APPROVED SYSTEM USING CABLE TRAY MANUFACTURERS' MATERIALS AND PARTS WHEN AVAILABLE FROM THE MANUFACTURER AND AS INTENDED. REFER TO DRAWING T4.01 FOR DETAILS. ALL CHANGES IN DIRECTION AND INTERSECTIONS SHALL USE PRE-MANUFACTURED OR FIELD-INSTALLED SWEEPS AND TEES. ALL SWEEPS AND TEES SHALL MAINTAIN A 1' FOOT MINIMUM RADIUS IN CHANGES OF DIRECTION.
- CABLE TRAY SHALL NOT PENETRATE WALLS. PROVIDE TRANSITION FROM CABLE TRAY TO LISTED FIRESTOP ASSEMBLIES IN ORDER TO PENETRATE FIRE/SMOKE WALLS. TRANSITION TO 4" CONDUITS/SLEEVES FOR NON-RATED WALLS. PROVIDE SUFFICIENT CONDUITS/SLEEVES TO ACCOMMODATE 100% VISUAL CABLE TRAY LOAD AT 50% VISUAL CONDUIT FILL.
- REFER TO ELECTRICAL DRAWINGS & SPECIFICATIONS FOR SHARED FLOOR BOXES & LOW VOLTAGE CONDUIT.
- PROVIDE BRACING TO MEET OSHPD SEISMIC REQUIREMENTS. REFER TO SHEET T4.02 FOR MORE INFORMATION.
- PROVIDE ALL OUTLET CONDUITS FROM WORK AREA OUTLETS, DEVICES OR PULL BOXES TO NEAREST CABLE TRAY.
- INSTALL CABLE TRAY @ 8" ABOVE CEILING.

KEY PLAN



CHILDREN'S HOSPITAL
OF ORANGE COUNTY - TOWER II

PROJECT:
ADDRESS:
W.O. NO.:

PROPRIETARY STATEMENT
THESE DRAWINGS AND DOCUMENTS HEREIN ATTACHED ARE THE PROPERTY OF BERGEGLECTRIC CORPORATION. ANY REUSE OR REPRODUCTION OF THESE DOCUMENTS WITHOUT WRITTEN PERMISSION OF BERGEGLECTRIC CORPORATION IS STRICTLY FORBIDDEN. ALL RIGHTS RESERVED.

DRAWN BY:
J. RAMIREZ

DESIGN SUPERVISOR:

INSTALL SUPERVISOR:
Scott Adams
Tel Data Systems
Bergelectric Corporation
650 Upper Street
Escondido, CA 92029

REVISIONS:
05-30-12 RECORD DRAWINGS

SHEET TITLE:
TELECOM
FLOOR PLAN
LEVEL 1
AREA-P

SCALE:
1/4" = 1'0"

DRAWING NO.:
T3.1P
RECORD
DRAWING

T3.1U
RECORD
DRAWING