

PROJECT: **CHILDREN'S HOSPITAL  
OF ORANGE COUNTY - TOWER II**

ADDRESS: 455 South Main Street  
Orange, CA 92668-3874

W.O. NO.: 12684

PROPRIETARY STATEMENT  
THESE DRAWINGS AND DOCUMENTS HEREON ATTACHED ARE THE  
PROPERTY OF BERGELECTRIC CORPORATION. ANY REUSE OR  
REPRODUCTION OF THESE DOCUMENTS WITHOUT WRITTEN  
PERMISSION OF BERGELECTRIC CORPORATION IS STRICTLY  
FORBIDDEN. ALL RIGHTS RESERVED.

DRAWN BY:  
J. RAMIREZ

DESIGN SUPERVISOR:

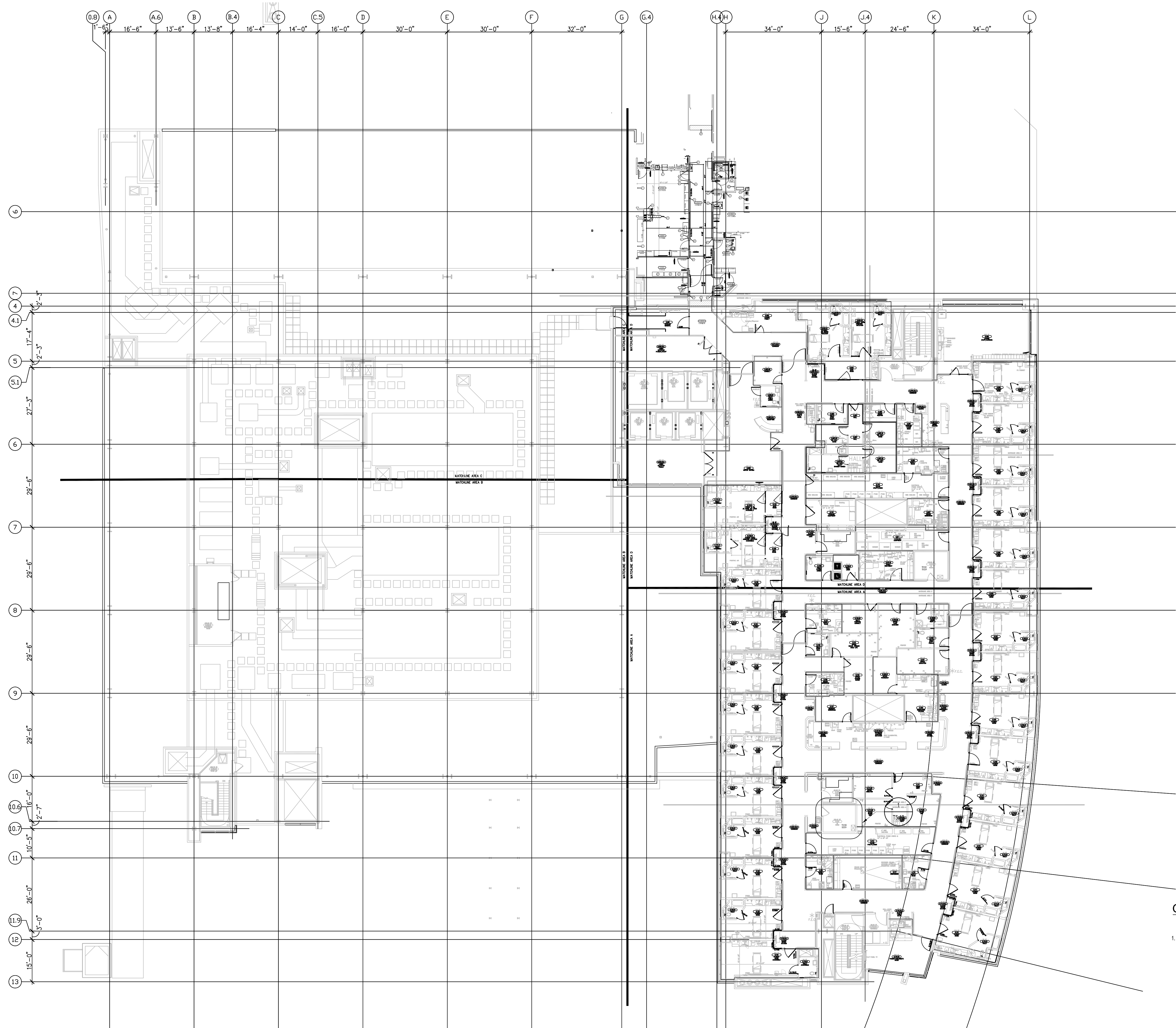
INSTALL SUPERVISOR:  
Scott Adams  
Tel Data Systems  
Bergelectric Corporation  
650 Upper Street  
Escondido, CA 92029

REVISION:  
05-30-12 RECORD DRAWINGS

SHEET TITLE:  
**TELECOM  
FLOOR PLAN  
LEVEL 5  
OVERALL**

SCALE:  
1/16"=1'0"

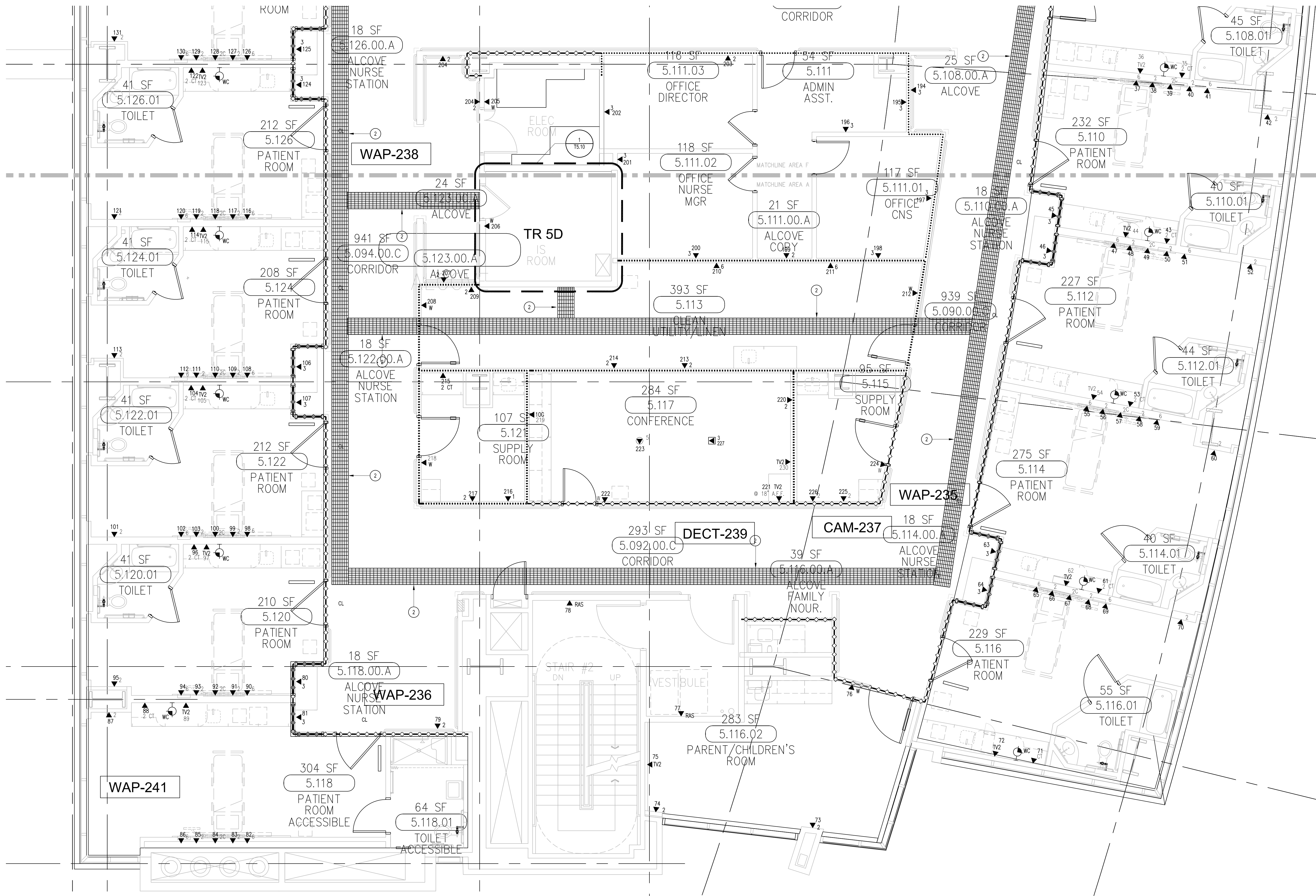
DRAWING NO.:  
**T3.5  
RECORD  
DRAWING**



GENERAL SHEET NOTES

1. THE DRAWINGS ARE DIAGRAMMATIC ONLY AND MAY NOT SHOW ALL COMPONENTS, MATERIALS, OFFSETS, BENDS, ELBOWS AND OTHER SPECIFIC ELEMENTS THAT MAY BE REQUIRED FOR A COMPLETE INSTALLATION. THE CONTRACTOR SHALL BE RESPONSIBLE FOR PROVIDING ALL MATERIALS NEEDED FOR A COMPLETE AND FUNCTIONAL INSTALLATION.

**T3** LEVEL 5 - TELECOM PLAN - OVERALL  
1/16"=1'0"



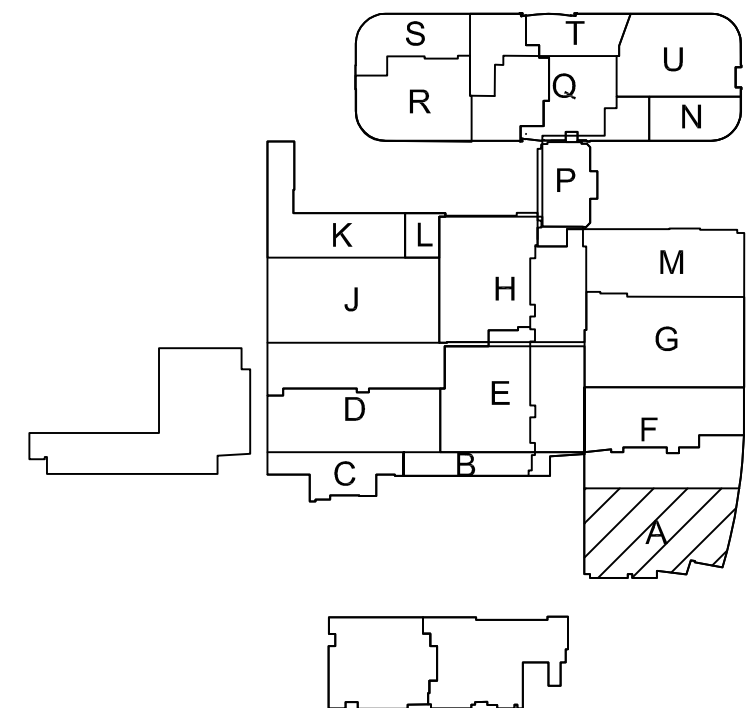
○ SHEET KEYNOTES

- 12" W X 6" H CABLE RUNWAY
- 24" W X 6" H CABLE RUNWAY
- 18" W X 6" H CABLE RUNWAY

GENERAL SHEET NOTES

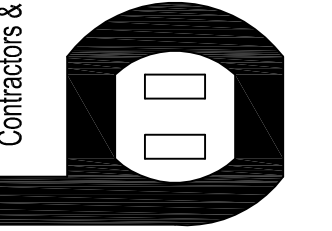
- THE DRAWINGS ARE DIAGRAMMATIC ONLY AND MAY NOT SHOW ALL COMPONENTS, MATERIALS, OFFSETS, BENDS, ELBOWS AND OTHER SPECIFIC ELEMENTS THAT MAY BE REQUIRED FOR A COMPLETE INSTALLATION. THE CONTRACTOR SHALL BE RESPONSIBLE FOR PROVIDING ALL MATERIALS NEEDED FOR A COMPLETE AND FUNCTIONAL INSTALLATION.
- ELECTRIC EQUIPMENT AND DEVICES (E.G. PBX, NETWORK SWITCHES) ARE SHOWN FOR REFERENCE ONLY.
- REFER TO ARCHITECTURAL DETAIL PLANS FOR FINAL PATIENT ROOM DEVICE LOCATIONS. REFER TO ARCHITECTURAL DETAILS FOR OVERCOUNTER WAO HEIGHTS. REFER TO ARCHITECTURAL DETAILS FOR WALL-MOUNT WAO HEIGHTS.
- HORIZONTAL DATA/VOICE/VIDEO CABLE SHALL TERMINATE IN THE TECHNOLOGY ROOM ON THE SAME FLOOR AS THE WORK AREA OUTLETS.
- WORK AREA OUTLETS SHALL CONSIST OF SINGLE PLASTER REDUCING RINGS INSTALLED ON OVERSIZE DOUBLE GANG BACKBOXES, UNLESS OTHERWISE NOTED.
- TV COAX CABLES SHALL BE COILED IN THE RESPECTIVE TECHNOLOGY ROOMS WITH A 20' SERVICE LOOP PRIOR TO TERMINATIONS. COILS SHALL BE SECURED TO THE AUDIOVISUAL WALL FIELD FOR A CONTRACTOR.
- COMMON LOW VOLTAGE CABLE RUNWAY IS 24" W X 6" H HIGH. PROVIDE ALL MATERIALS AS NEEDED FOR A COMPLETE, MANUFACTURER-APPROVED SYSTEM USING CABLE TRAY MANUFACTURERS' MATERIALS AND PARTS WHEN AVAILABLE FROM THE MANUFACTURER AND AS INTENDED. REFER TO DRAWING T4.01 FOR DETAILS. ALL CHANGES IN DIRECTION AND INTERSECTIONS SHALL USE PRE-MANUFACTURED OR FIELD-INSTALLED SWEEPS AND TEES. ALL SWEEPS AND TEES SHALL MAINTAIN A 1' FOOT MINIMUM RADIUS IN CHANGES OF DIRECTION.
- CABLE TRAY SHALL NOT PENETRATE WALLS. PROVIDE TRANSITION FROM CABLE TRAY TO LISTED PRESTOP ASSEMBLIES IN ORDER TO PENETRATE FIRE-SMOKE WALLS. TRANSITION TO 4" CONDUITS/SLEEVES FOR NON-RATED WALLS. PROVIDE SUFFICIENT CONDUITS/SLEEVES TO ACCOMMODATE 100% VISUAL CABLE TRAY LOAD AT 50% VISUAL CONDUIT FILL.
- REFER TO ELECTRICAL DRAWINGS & SPECIFICATIONS FOR SHARED FLOOR BOXES & LOW VOLTAGE CONDUIT.
- PROVIDE BRACING TO MEET OSHPD SEISMIC REQUIREMENTS. REFER TO SHEET T4.02 FOR MORE INFORMATION.
- PROVIDE ALL OUTLET CONDUITS FROM WORK AREA OUTLETS, DEVICES OR PULL BOXES TO NEAREST CABLE TRAY.
- INSTALL CABLE TRAY @ 6" ABOVE CEILING.

KEY PLAN



T3 LEVEL 5 - TELECOM PLAN - AREA A

Bergelectric Corp.  
Contractors & Engineers



AC 10-485046  
650 UPPER ST.  
ESCONDIDO, CA 92029  
(760) 746-1033  
FAX (760) 746-4619

PROJECT:  
CHILDREN'S HOSPITAL  
OF ORANGE COUNTY - TOWER II

ADDRESS:  
455 South Main Street  
Orange, CA 92668-3874

W.O. NO.:  
12684

PROPRIETARY STATEMENT  
THESE DRAWINGS AND DOCUMENTS HEREIN ATTACHED ARE THE  
PROPERTY OF BERGELECTRIC CORPORATION. ANY REUSE OR  
REPRODUCTION OF THESE DOCUMENTS WITHOUT WRITTEN  
PERMISSION OF BERGELECTRIC CORPORATION IS STRICTLY  
FORBIDDEN. ALL RIGHTS RESERVED.

DRAWN BY:  
J. RAMIREZ

DESIGN SUPERVISOR:

INSTALL SUPERVISOR:  
Scott Adams  
Tel Data Systems  
Bergelectric Corporation  
650 Upper Street  
Escondido, CA 92029

REVISIONS:  
05-30-12 RECORD DRAWINGS

SHEET TITLE:

TELECOM  
FLOOR PLAN  
LEVEL 5  
AREA-A

SCALE:  
1/4"=1'0"

DRAWING NO.:

T3.5A  
RECORD  
DRAWING



# CHILDREN'S HOSPITAL OF ORANGE COUNTY - TOWER II

PROJECT:  
ADDRESS: 455 South Main Street  
Orange, CA 92668-3874  
W.O. NO.: 12684

## PROPRIETARY STATEMENT

THESE DRAWING DOCUMENTS HEREIN ATTACHED ARE THE PROPERTY OF BERGELECTRIC CORPORATION. ANY REUSE OR REPRODUCTION OF THESE DOCUMENTS WITHOUT WRITTEN PERMISSION OF BERGELECTRIC CORPORATION IS STRICTLY FORBIDDEN. ALL RIGHTS RESERVED.

## DRAWN BY:

J. RAMIREZ

## DESIGN SUPERVISOR:

## INSTALL SUPERVISOR:

## SCOTT ADAMS

Tel Data Systems

Bergelectric Corporation

650 Upper Street

Escondido, CA 92029

## REVISION:

05-30-12 RECORD DRAWINGS

## SHEET TITLE:

## TELECOM FLOOR PLAN

LEVEL 5

AREA-F

## SCALE:

1/4"=1'0"

## DRAWING NO.:

## T3.5F

RECORD

DRAWING

## KEY PLAN

## SCALE:

1/4"=1'0"

## DRAWING NO.:

## T3.5F

RECORD

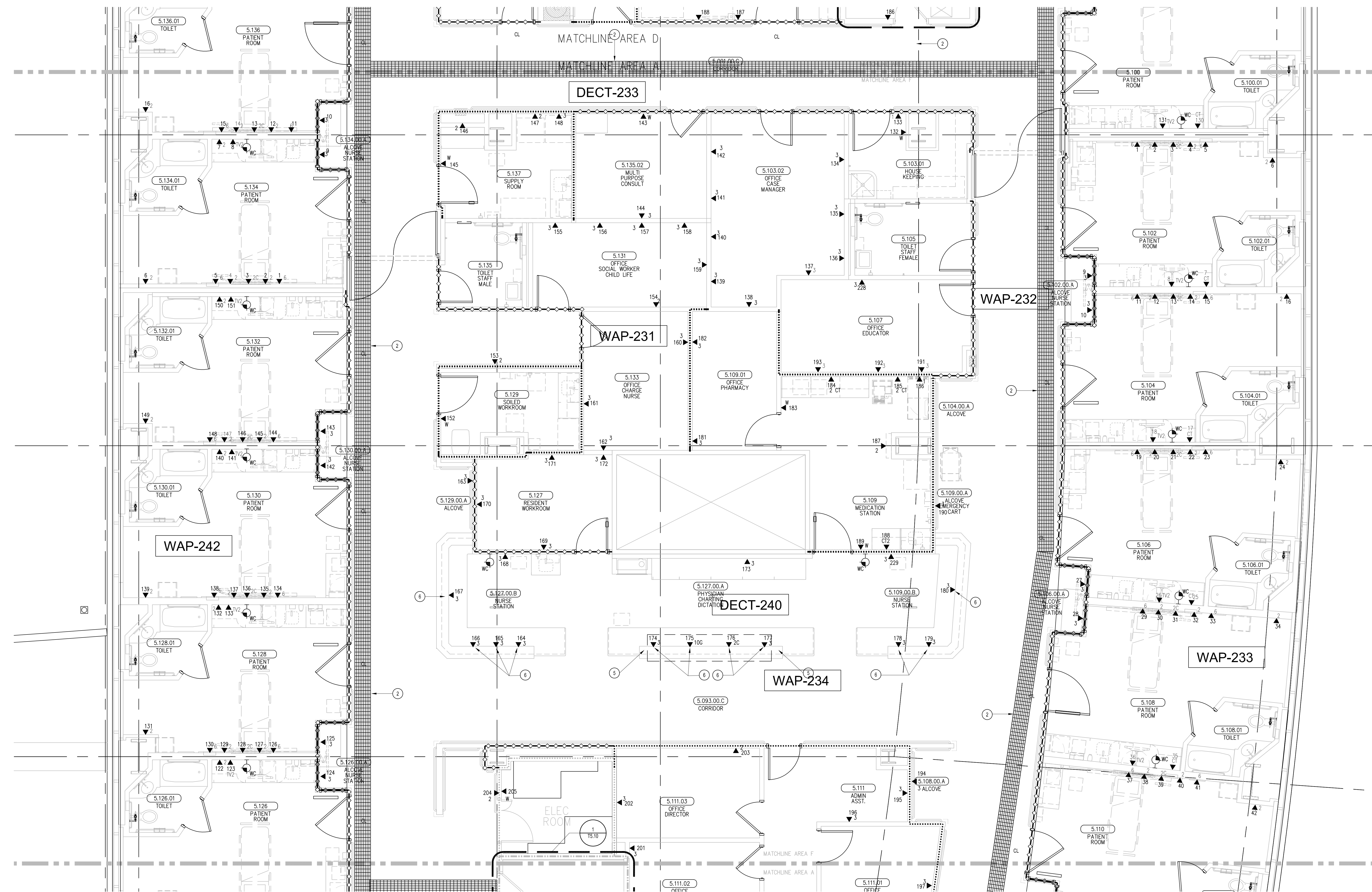
DRAWING

## KEY PLAN

## SCALE:

1/4"=1'0"

## DRAWING NO.:



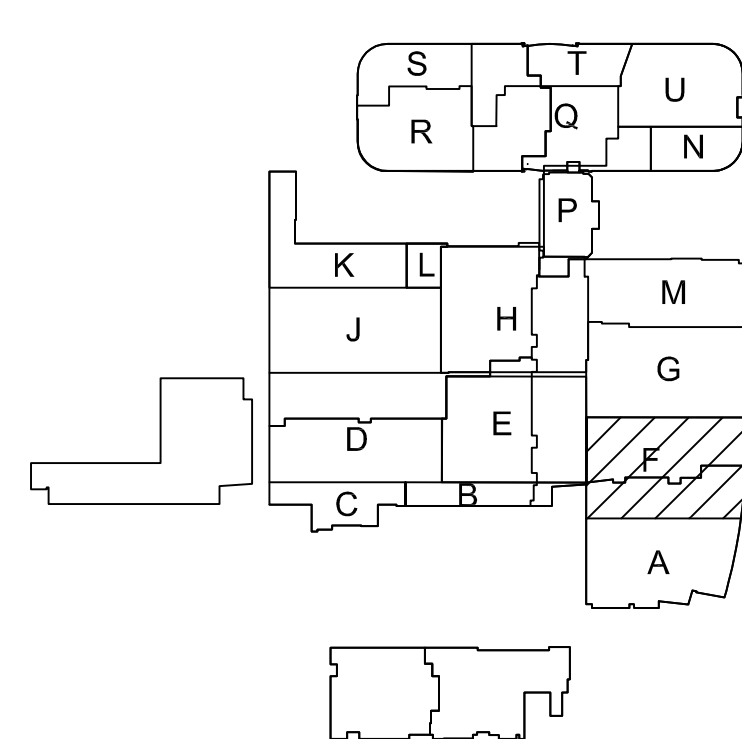
## SHEET KEYNOTES

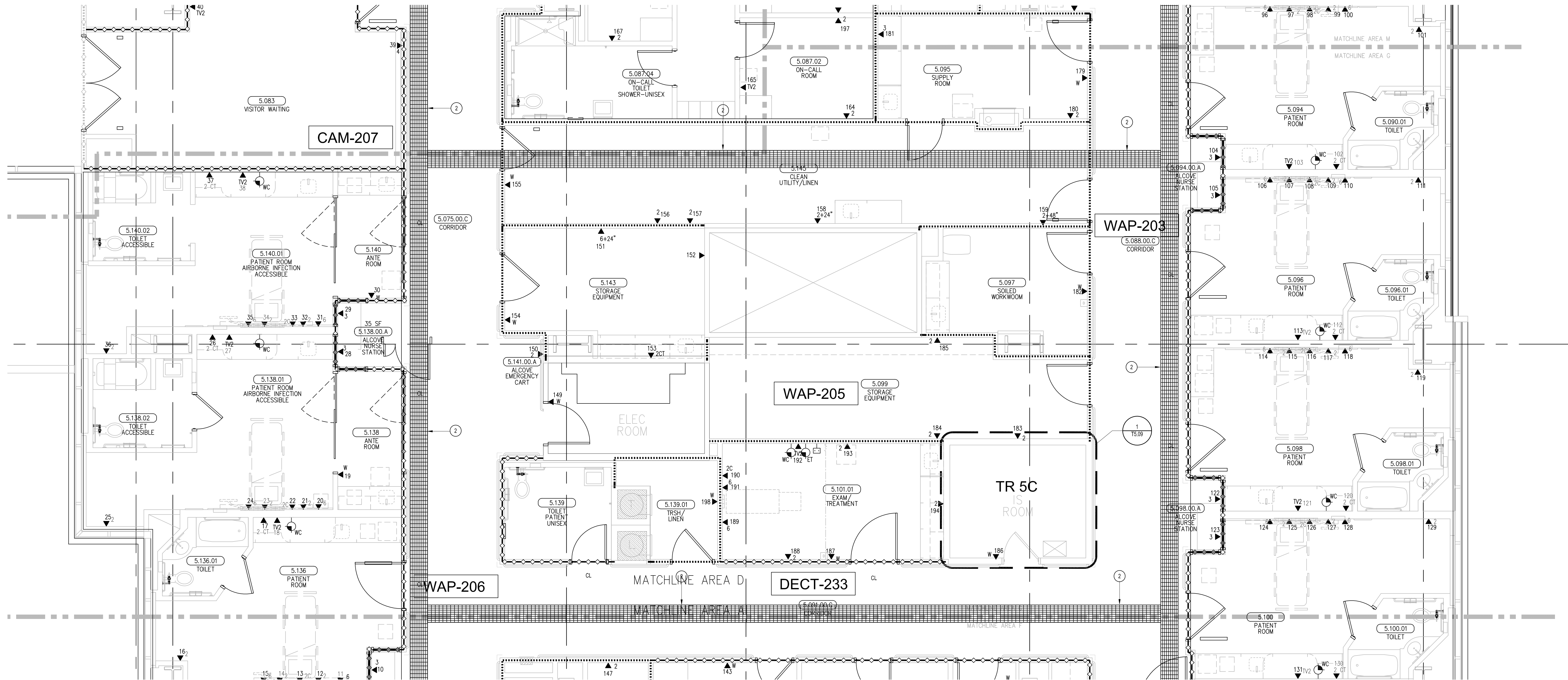
- 12"W X 6"H CABLE RUNWAY
- 24"W X 6"H CABLE RUNWAY
- 18"W X 6"H CABLE RUNWAY
- OUTLETS SERVED FROM FLOOR BELOW
- ONE (1) 1-1/2" CONDUIT TO FLOOR BELOW
- OUTLETS ARE TO BE FED VIA WALL FROM ABOVE CEILING SPACE. PROVIDE TWO (2) 1-1/4" CONDUITS FROM CABLE RUNWAY TO MILLWORK. TERMINATE CONDUITS AT 24" A.F.F. AND EXTEND ONTO MILLWORK USING NON-METALLIC SURFACE RACEWAYS WITH MINIMUM OF 1"x1" INTERNAL AREA TO EACH OUTLET.

## GENERAL SHEET NOTES

- THE DRAWINGS ARE DIAGRAMMATIC ONLY AND MAY NOT SHOW ALL COMPONENTS, MATERIALS, OFFSETS, BENDS, ELBOWS AND OTHER SPECIFIC ELEMENTS THAT MAY BE REQUIRED FOR A COMPLETE INSTALLATION. THE CONTRACTOR SHALL BE RESPONSIBLE FOR PROVIDING ALL MATERIALS NEEDED FOR A COMPLETE AND FUNCTIONAL INSTALLATION.
- ELECTRIC EQUIPMENT AND DEVICES (E.G. PBX, NETWORK SWITCHES) ARE SHOWN FOR REFERENCE ONLY.
- REFER TO ARCHITECTURAL DETAIL PLANS FOR FINAL PATIENT ROOM DEVICE LOCATIONS. REFER TO ARCHITECTURAL DETAILS FOR OVERCOUNTER WAO HEIGHTS. REFER TO ARCHITECTURAL DETAILS FOR WALL-MOUNT WAO HEIGHTS.
- HORIZONTAL DATA/VOICE/VIDEO CABLE SHALL TERMINATE IN THE TECHNOLOGY ROOM ON THE SAME FLOOR AS THE WORK AREA OUTLETS.
- WORK AREA OUTLETS SHALL CONSIST OF SINGLE PLASTER REDUCING RINGS INSTALLED ON OVERSIZE DOUBLE GANG BACKBOXES, UNLESS OTHERWISE NOTED.
- TV COAX CABLES SHALL BE COILED IN THE RESPECTIVE TECHNOLOGY ROOMS WITH A 20' SERVICE LOOP PRIOR TO TERMINATIONS. COILS SHALL BE SECURED TO THE AUDIOVISUAL WALL FIELD FOR AV CONTRACTOR.
- COMMON LOW VOLTAGE CABLE RUNWAY IS 24" W X 6" HIGH. PROVIDE ALL MATERIALS AS NEEDED FOR A COMPLETE, MANUFACTURER-APPROVED SYSTEM USING CABLE TRAY MANUFACTURER'S MATERIALS AND PARTS WHEN AVAILABLE FROM THE MANUFACTURER AND AS INTENDED. REFER TO DRAWING T4.01 FOR DETAILS. ALL CHANGES IN DIRECTION AND INTERSECTIONS SHALL USE PRE-MANUFACTURED OR FIELD-INSTALLED SWEEPS AND TEES. ALL SWEEPS AND TEES SHALL MAINTAIN A 1'00" MINIMUM RADIUS IN CHANGES OF DIRECTION.
- CABLE TRAY SHALL NOT PENETRATE WALLS. PROVIDE TRANSITION FROM CABLE TRAY TO LISTED FIRESTOP ASSEMBLIES IN ORDER TO PENETRATE FIRE/SMOKE WALLS. TRANSITION TO 4" CONDUITS/SLEEVES FOR NON-RATED WALLS. PROVIDE SUFFICIENT CONDUITS/SLEEVES TO ACCOMMODATE 100% VISUAL CABLE TRAY LOAD AT 50% VISUAL CONDUIT FILL.
- REFER TO ELECTRICAL DRAWINGS & SPECIFICATIONS FOR SHARED FLOOR BOXES & LOW VOLTAGE CONDUIT.
- PROVIDE BRACING TO MEET OSHPD SEISMIC REQUIREMENTS. REFER TO SHEET T4.02 FOR MORE INFORMATION.
- PROVIDE ALL OUTLET CONDUITS FROM WORK AREA OUTLETS, DEVICES OR PULL BOXES TO NEAREST CABLE TRAY.
- INSTALL CABLE TRAY @ 6" ABOVE CEILING.

## KEY PLAN





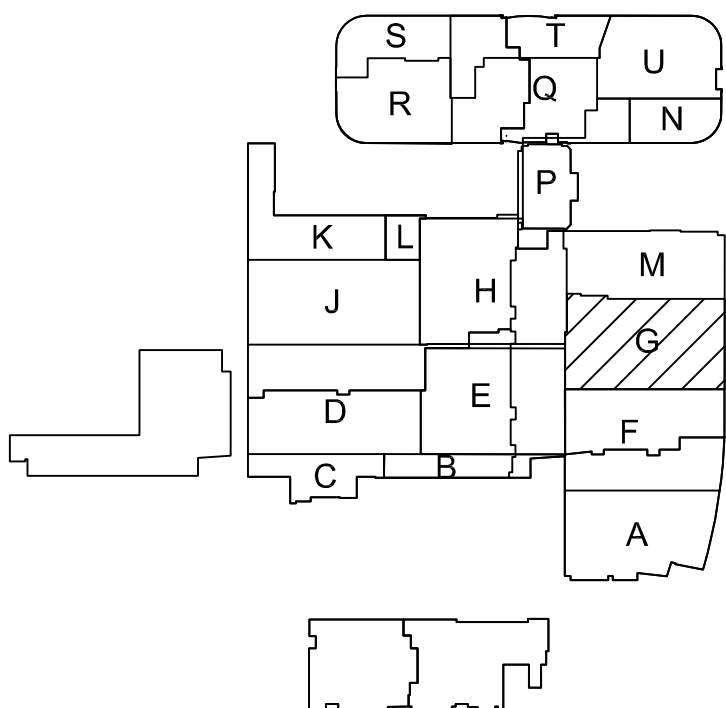
**SHEET KEYNOTES**

1. 12"W X 6"H CABLE RUNWAY
2. 24"W X 6"H CABLE RUNWAY
3. 18"W X 6"H CABLE RUNWAY

**GENERAL SHEET NOTES**

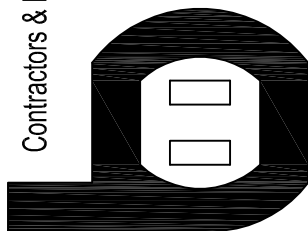
1. THE DRAWINGS ARE DIAGRAMMATIC ONLY AND MAY NOT SHOW ALL COMPONENTS, MATERIALS, OFFSETS, BENDS, ELBOWS AND OTHER SPECIFIC ELEMENTS THAT MAY BE REQUIRED FOR A COMPLETE INSTALLATION. THE CONTRACTOR SHALL BE RESPONSIBLE FOR PROVIDING ALL MATERIALS NEEDED FOR A COMPLETE AND FUNCTIONAL INSTALLATION.
2. ELECTRIC EQUIPMENT AND DEVICES (E.G. PBX, NETWORK SWITCHES) ARE SHOWN FOR REFERENCE ONLY.
3. REFER TO ARCHITECTURAL DETAIL PLANS FOR FINAL PATIENT ROOM DEVICE LOCATIONS. REFER TO ARCHITECTURAL DETAILS FOR OVERCOUNTER WAO HEIGHTS. REFER TO ARCHITECTURAL DETAILS FOR WALL-MOUNT WAO HEIGHTS.
4. HORIZONTAL DATA/VOICE/VIDEO CABLE SHALL TERMINATE IN THE TECHNOLOGY ROOM ON THE SAME FLOOR AS THE WORK AREA OUTLETS.
5. WORK AREA OUTLETS SHALL CONSIST OF SINGLE PLASTER REDUCING RINGS INSTALLED ON OVERSIZE DOUBLE GANG BACKBOXES, UNLESS OTHERWISE NOTED.
6. TV COAX CABLES SHALL BE COILED IN THE RESPECTIVE TECHNOLOGY ROOMS WITH A 20' SERVICE LOOP PRIOR TO TERMINATIONS. COILS SHALL BE SECURED TO THE AUDIOVISUAL WALL FIELD FOR AV CONTRACTOR.
7. COMMON LOW VOLTAGE CABLE RUNWAY IS 24" W X 6" HIGH. PROVIDE ALL MATERIALS AS NEEDED FOR A COMPLETE, MANUFACTURER-APPROVED SYSTEM USING CABLE TRAY MANUFACTURERS MATERIALS AND PARTS WHEN AVAILABLE FROM THE MANUFACTURER AND AS INTENDED. REFER TO DRAWING T4.01 FOR DETAILS. ALL CHANGES IN DIRECTION AND INTERSECTIONS SHALL USE PRE-MANUFACTURED OR FIELD-INSTALLED SWEEPS AND TEES. ALL SWEEPS AND TEES SHALL MAINTAIN A 1 FOOT MINIMUM RADIUS IN CHANGES OF DIRECTION.
8. CABLE TRAY SHALL NOT PENETRATE WALLS. PROVIDE TRANSITION FROM CABLE TRAY TO LISTED FIRESTOP ASSEMBLIES IN ORDER TO PENETRATE FIRE-SMOKE WALLS. TRANSITION TO 4" CONDUITS/SLEEVES FOR NON-RATED WALLS. PROVIDE SUFFICIENT CONDUITS/SLEEVES TO ACCOMMODATE 100% VISUAL CABLE TRAY LOAD AT 50% VISUAL CONDUIT FILL.
9. REFER TO ELECTRICAL DRAWINGS & SPECIFICATIONS FOR SHARED FLOOR BOXES & LOW VOLTAGE CONDUIT.
10. PROVIDE BRACING TO MEET OSHPD SEISMIC REQUIREMENTS. REFER TO SHEET T4.02 FOR MORE INFORMATION.
11. PROVIDE ALL OUTLET CONDUITS FROM WORK AREA OUTLETS, DEVICES OR PULL BOXES TO NEAREST CABLE TRAY.
12. INSTALL CABLE TRAY @ 8" ABOVE CEILING.

**KEY PLAN**



**T3 LEVEL 5 - TELECOM PLAN - AREA G**

Bergelectric Corp.  
Contractors & Engineers



HC 10-485046  
1760 74E-1033  
650 UPPER ST.  
ESCONDIDO, CA 92029  
FAX (760) 74E-4619

**PROJECT:** CHILDREN'S HOSPITAL  
OF ORANGE COUNTY - TOWER II

**ADDRESS:** 455 South Main Street  
Orange, CA 92668-3874

**W.O. NO.:** 12684

**PROPRIETARY STATEMENT**  
THESE DRAWING DOCUMENTS HEREIN ATTACHED ARE THE PROPERTY OF BERGELECTRIC CORPORATION. ANY REUSE OR REPRODUCTION OF THESE DOCUMENTS WITHOUT WRITTEN PERMISSION OF BERGELECTRIC CORPORATION IS STRICTLY FORBIDDEN. ALL RIGHTS RESERVED.

**DRAWN BY:**  
J. RAMIREZ

**DESIGN SUPERVISOR:**

**INSTALL SUPERVISOR:**

Scott Adams  
Tel Data Systems  
Bergelectric Corporation  
650 Upper Street  
Escondido, CA 92029

**REVISION:**

05-30-12 RECORD DRAWINGS

**SHEET TITLE:**

**TELECOM  
FLOOR PLAN  
LEVEL 5  
AREA-G**

**SCALE:**

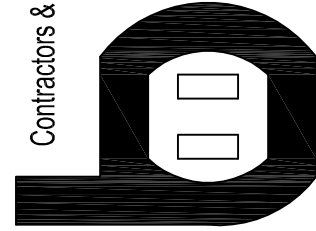
1/4"=1'0"

**DRAWING NO.:**

**T3.5G  
RECORD  
DRAWING**







# CHILDREN'S HOSPITAL OF ORANGE COUNTY - TOWER II

PROJECT:

ADDRESS: 455 South Main Street  
Orange, CA 92668-3874

W.O. NO.:

PROPRIETARY STATEMENT  
THESE DRAWINGS AND DOCUMENTS HEREON ARE THE PROPERTY OF BERGELECTRIC CORPORATION. ANY REUSE OR REPRODUCTION OF THESE DOCUMENTS WITHOUT WRITTEN PERMISSION OF BERGELECTRIC CORPORATION IS STRICTLY FORBIDDEN. ALL RIGHTS RESERVED.

DRAWN BY:  
J. RAMIREZ

DESIGN SUPERVISOR:

INSTALL SUPERVISOR:  
Scott Adams  
Tel Data Systems  
Bergelectric Corporation  
650 Upper Street  
Escondido, CA 92029

REVISION:  
05-30-12 RECORD DRAWINGS

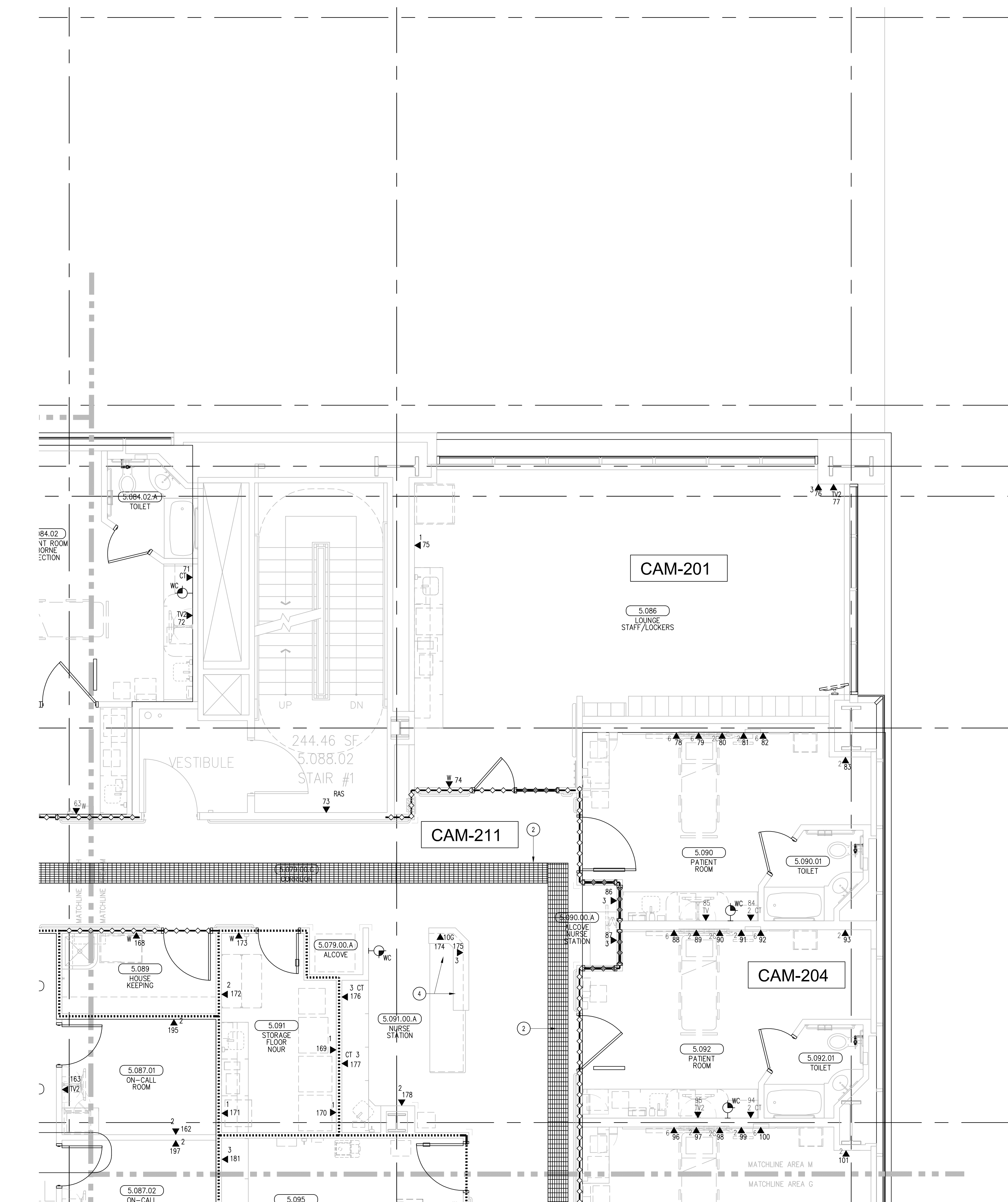
SHEET TITLE:

TELECOM  
FLOOR PLAN  
LEVEL 5  
AREA-M

SCALE:  
1/4"=1'0"

DRAWING NO.:

T3.5M  
RECORD  
DRAWING



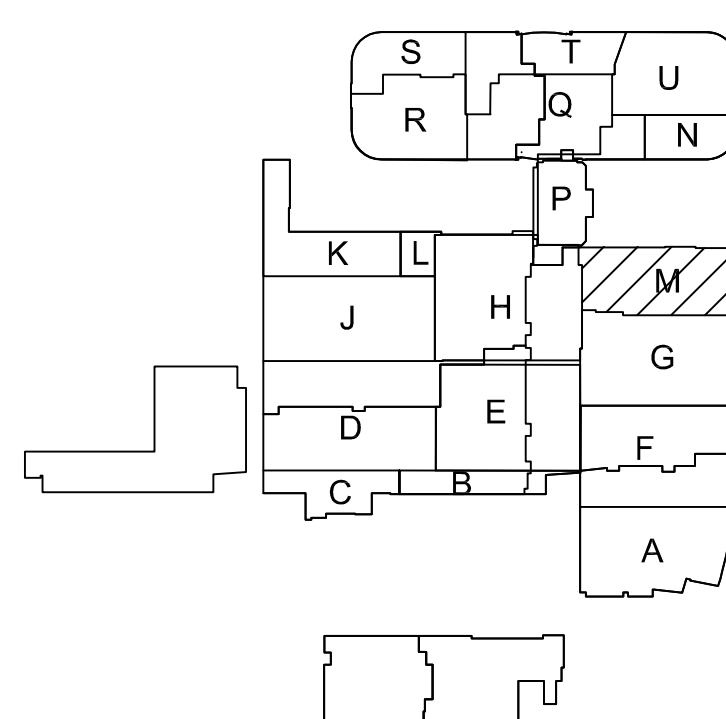
## SHEET KEYNOTES

- 12"W X 6"H CABLE RUNWAY
- 24"W X 6"H CABLE RUNWAY
- 18"W X 6"H CABLE RUNWAY
- OUTLETS ARE TO BE FED VIA WALL FROM ABOVE CEILING SPACE. PROVIDE TWO (2) 1/4" CONDUITS FROM CABLE RUNWAY TO MILLWORK. TERMINATE CONDUITS AT 24" A.F.F. AND EXTEND ONTO MILLWORK USING NON-METALLIC SURFACE RACEWAYS WITH MINIMUM OF 1"X1" INTERNAL AREA TO EACH OUTLET.

## GENERAL SHEET NOTES

- THE DRAWINGS ARE DIAGRAMMATIC ONLY AND MAY NOT SHOW ALL COMPONENTS, MATERIALS, OFFSETS, BENDS, ELBOWS AND OTHER SPECIFIC ELEMENTS THAT MAY BE REQUIRED FOR A COMPLETE INSTALLATION. THE CONTRACTOR SHALL BE RESPONSIBLE FOR PROVIDING ALL MATERIALS NEEDED FOR A COMPLETE AND FUNCTIONAL INSTALLATION.
- ELECTRIC EQUIPMENT AND DEVICES (E.G. PBX, NETWORK SWITCHES) ARE SHOWN FOR REFERENCE ONLY.
- REFER TO ARCHITECTURAL DETAIL PLANS FOR FINAL PATIENT ROOM DEVICE LOCATIONS. REFER TO ARCHITECTURAL DETAILS FOR OVERCOUNTER WAO HEIGHTS. REFER TO ARCHITECTURAL DETAILS FOR WALL-MOUNT WAO HEIGHTS.
- HORIZONTAL DATA/VOICE/VIDEO CABLE SHALL TERMINATE IN THE TECHNOLOGY ROOM ON THE SAME FLOOR AS THE WORK AREA OUTLETS.
- WORK AREA OUTLETS SHALL CONSIST OF SINGLE PLASTER REDUCING RINGS INSTALLED ON OVERSIZE DOUBLE GANG BACKBOXES, UNLESS OTHERWISE NOTED.
- TV COAX CABLES SHALL BE COILED IN THE RESPECTIVE TECHNOLOGY ROOMS WITH A 20' SERVICE LOOP PRIOR TO TERMINATIONS. COILS SHALL BE SECURED TO THE AUDIOVISUAL WALL FIELD FOR AV CONTRACTOR.
- COMMON LOW VOLTAGE CABLE RUNWAY IS 24" W X 6" HIGH. PROVIDE ALL MATERIALS AS NEEDED FOR A COMPLETE MANUFACTURER-APPROVED SYSTEM USING CABLE TRAY MANUFACTURER'S MATERIALS AND PARTS WHEN AVAILABLE FROM THE MANUFACTURER AND AS INTENDED. REFER TO DRAWING T4.01 FOR DETAILS. ALL CHANGES IN DIRECTION AND INTERSECTIONS SHALL USE PRE-MANUFACTURED OR FIELD-INSTALLED SWEEPS AND TEES. ALL SWEEPS AND TEES SHALL MAINTAIN A 1' FOOT MINIMUM RADIUS IN CHANGES OF DIRECTION.
- CABLE TRAY SHALL NOT PENETRATE WALLS. PROVIDE TRANSITION FROM CABLE TRAY TO LISTED FIRESTOP ASSEMBLIES IN ORDER TO PENETRATE FIRE/SMOKE WALLS. TRANSITION TO 4" CONDUITS/SLEEVES FOR NON-RATED WALLS. PROVIDE SUFFICIENT CONDUITS/SLEEVES TO ACCOMMODATE 100% VISUAL CABLE TRAY LOAD AT 50% VISUAL CONDUIT FILL.
- REFER TO ELECTRICAL DRAWINGS & SPECIFICATIONS FOR SHARED FLOOR BOXES & LOW VOLTAGE CONDUIT.
- PROVIDE BRACING TO MEET OSHO-P SEISMIC REQUIREMENTS. REFER TO SHEET T4.02 FOR MORE INFORMATION.
- PROVIDE ALL OUTLET CONDUITS FROM WORK AREA OUTLETS, DEVICES OR PULL BOXES TO NEAREST CABLE TRAY.
- INSTALL CABLE TRAY @ 6" ABOVE CEILING.

## KEY PLAN

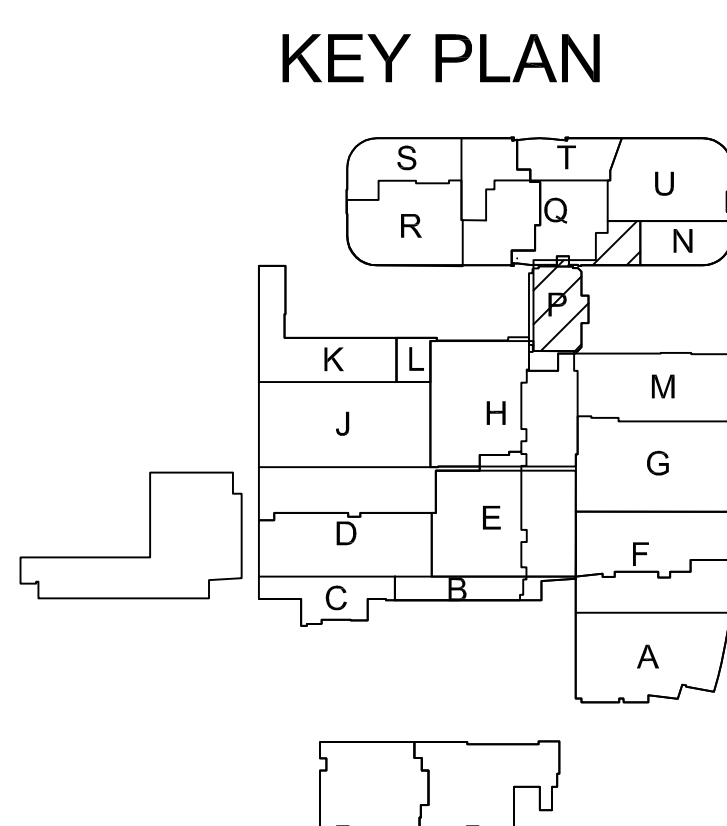




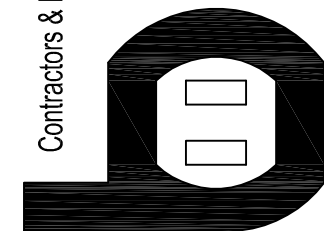
1. 12"W X 6"H CABLE RUNWAY

### GENERAL SHEET NOTES

1. THE DRAWINGS ARE DIAGRAMMATIC ONLY AND MAY NOT SHOW ALL COMPONENTS, MATERIALS, OFFSETS, BENDS, ELBOWS AND OTHER SPECIFIC ELEMENTS THAT MAY BE REQUIRED FOR A COMPLETE INSTALLATION. THE CONTRACTOR SHALL BE RESPONSIBLE FOR PROVIDING ALL MATERIALS NEEDED FOR A COMPLETE AND FUNCTIONAL INSTALLATION.
2. ELECTRIC EQUIPMENT AND DEVICES (E.G. PABX, NETWORK SWITCHES) ARE SHOWN FOR REFERENCE ONLY.
3. REFER TO ARCHITECTURAL DETAIL PLANS FOR FINAL PATIENT ROOM DEVICE LOCATIONS. REFER TO ARCHITECTURAL DETAILS FOR OVERCOUNTER WALL HEIGHTS. REFER TO ARCHITECTURAL DETAILS FOR WALL-MOUNT WALL HEIGHTS.
4. HORIZONTAL DATA/VOICE/VIDEO CABLE SHALL TERMINATE IN THE TECHNOLOGY ROOM ON THE SAME FLOOR AS THE WORK AREA OUTLETS.
5. WORK AREA OUTLETS SHALL CONSIST OF SINGLE PLASTER REDUCING RINGS INSTALLED ON OVERSIZE DOUBLE GANG BACKBOXES, UNLESS OTHERWISE NOTED.
6. TV COAX CABLES SHALL BE COILED IN THE RESPECTIVE TECHNOLOGY ROOMS WITH A 20' SERVICE LOOP PRIOR TO TERMINATIONS. COILS SHALL BE SECURED TO THE AUDIOVISUAL WALL FIELD FOR AV CONTRACTOR.
7. COMMON LOW VOLTAGE CABLE TRAY IS SIZED AS INDICATED ON THE DRAWINGS. PROVIDE ALL MATERIALS AS NEEDED FOR A COMPLETE, MANUFACTURER-APPROVED SYSTEM USING CABLE TRAY MANUFACTURER'S MATERIALS AND PARTS WHEN AVAILABLE FROM THE MANUFACTURER AND AS INTENDED. REFER TO DRAWING 74.01 FOR DETAILS. ALL CHANGES IN DIRECTION AND INTERSECTIONS SHALL USE PRE-MANUFACTURED OR FIELD-INSTALLED SWEEPS AND TEES. ALL SWEEPS AND TEES SHALL MAINTAIN A 1' FOOT MINIMUM RADII IN CHANGES OF DIRECTION.
8. CABLE TRAY SHALL NOT PENETRATE WALLS. PROVIDE TRANSITION FROM CABLE TRAY TO LISTED FIRESTOP ASSEMBLIES IN ORDER TO PENETRATE FIRESTOP WALLS. TRANSITION TO 4" CONDUITS/ELBOWS FOR NON-RATED WALLS. PROVIDE SUFFICIENT CONDUITS/ELBOWS TO ACCOMMODATE 100% VISCAL CABLE TRAY LOAD AT 50% VISCAL CONDUIT FULL.
9. REFER TO ELECTRICAL DRAWINGS & SPECIFICATIONS FOR SHARED FLOOR BOXES & LOW VOLTAGE CONDUIT.
10. PROVIDE BRACING TO MEET OSHPD SEISMIC REQUIREMENTS. REFER TO SHEET 74.02 FOR MORE INFORMATION
11. PROVIDE ALL OUTLET CONDUITS FROM WORK AREA OUTLETS, DEVICES OR PULL BOXES TO NEAREST CABLE TRAY.
12. INSTALL CABLE TRAY @ 6" ABOVE CEILING.
13. PROVIDE CERTIFIED SEISMIC BRACING TO CABLE TRAYS TO MEET OSHPD CBC REQUIREMENTS. SUBMIT CERTIFIED DRAWINGS FOR APPROVAL.



**Bergelectric Corp.**  
**Contractors & Engineers**



#C10-#85046  
650 OPPER ST.  
ESCONDIDO CA 92029  
(760) 746-1003  
FAX (760) 746-4619

CHILDREN'S HOSPITAL  
OF ORANGE COUNTY - TOWER II

PROJECT:

ADDRESS:

W.O. NO.:

PROPRIETARY STATEMENT

THESE DRAWINGS/DOCUMENTS HEREW ATTACHED ARE THE  
PROPERTY OF BERGELECTRIC CORPORATION ANY REUSE OR  
REPRODUCTION OF THESE DOCUMENTS WITHOUT WRITTEN  
PERMISSION OF BERGELECTRIC CORPORATION IS STRICTLY  
FORBIDDEN. ALL RIGHTS RESERVED.

DRAWN BY:

J. RAMIRE

DESIGN SUPERVISOR:

## INSTALL SUPERVISOR:

Scott Adams  
Tel Data Systems  
Bergelectric Corporation  
650 Opper Street  
Escondido, CA 92029

REVISION:

05-30-12 RECORD DRAWINGS

SHEET TITLE

TELECOM  
FLOOR PLAN  
LEVEL 5  
AREA-P

SCALE:

$$1/4'' = 1'0''$$

DRAWING NO. :

T3.5P  
RECORD  
DRAWING