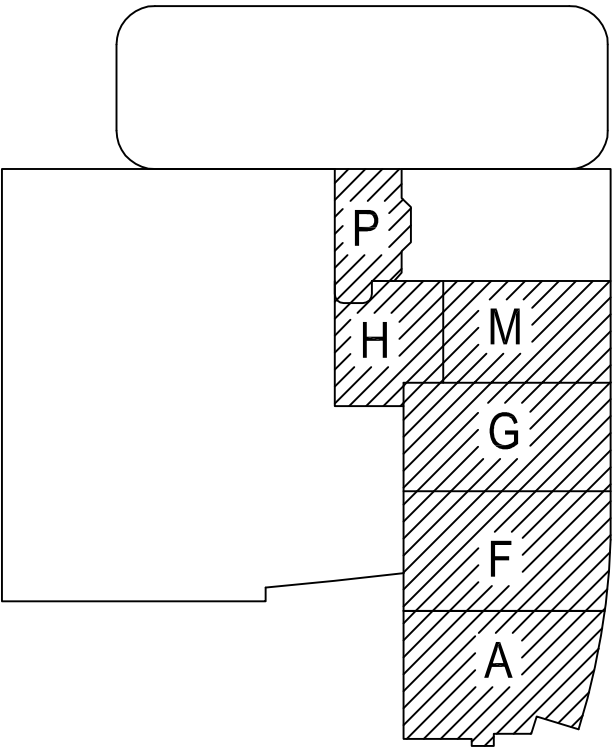


T3 LEVEL 7 - TELECOM PLAN - OVERALL  
1/16" = 1'-0"

KEY PLAN



PROJECT: **CHILDREN'S HOSPITAL  
OF ORANGE COUNTY - TOWER II**

ADDRESS: 455 South Main Street  
Orange, CA 92668-3874

W.O. NO.: 12684

PROPRIETARY STATEMENT  
THESE DRAWINGS AND DOCUMENTS HEREON ATTACHED ARE THE  
PROPERTY OF BERGELECTRIC CORPORATION ANY REUSE OR  
REPRODUCTION OF THESE DOCUMENTS WITHOUT WRITTEN  
PERMISSION OF BERGELECTRIC CORPORATION IS STRICTLY  
FORBIDDEN. ALL RIGHTS RESERVED.

DRAWN BY:  
J. RAMIREZ

DESIGN SUPERVISOR:

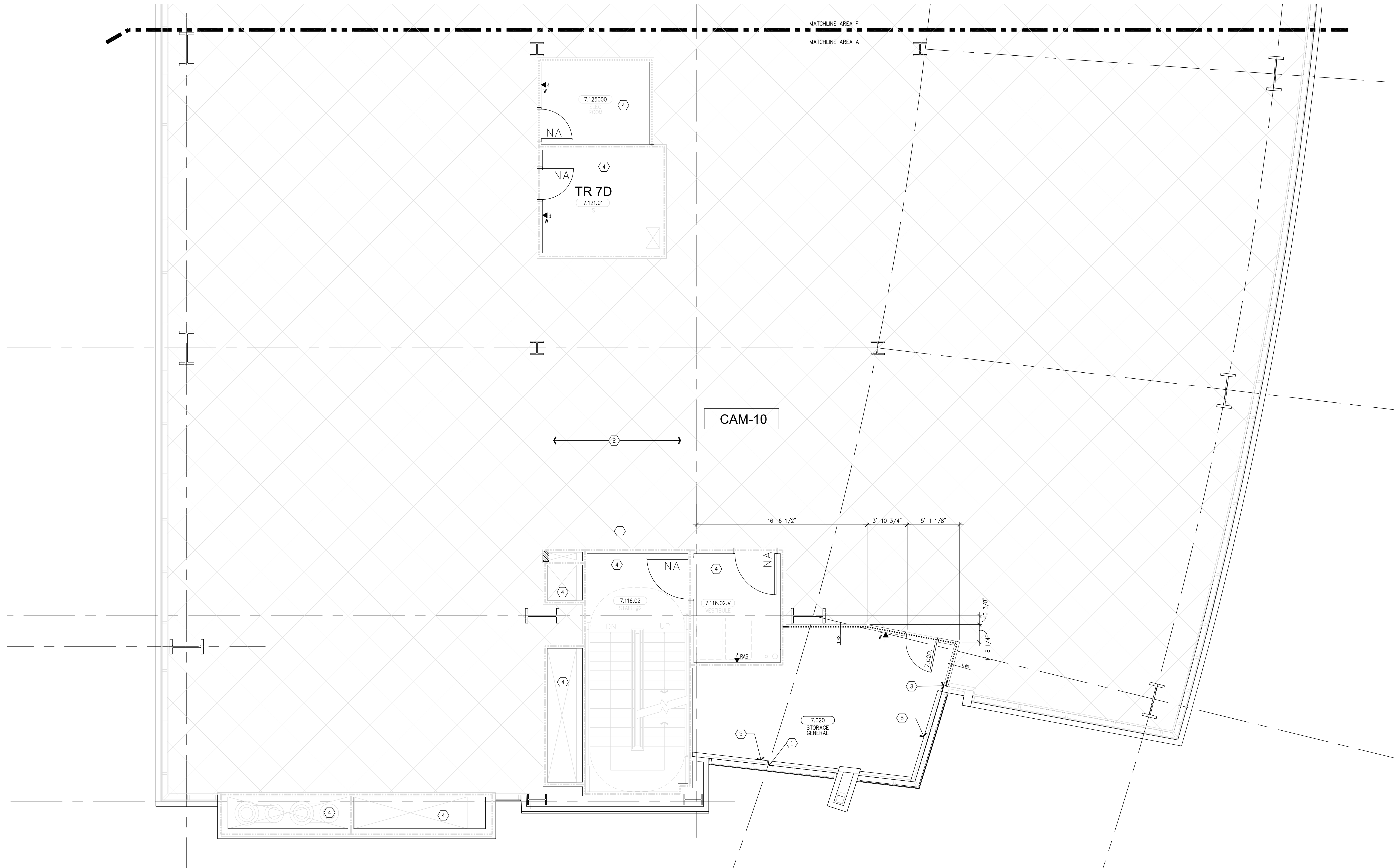
INSTALL SUPERVISOR:  
Scott Adams  
Tel Data Systems  
Bergelectric Corporation  
650 Upper Street  
Escondido, CA 92029

REVISION:  
05-30-12 RECORD DRAWINGS

SHEET TITLE:  
TELECOM  
FLOOR PLAN  
LEVEL 7  
OVERALL

SCALE:  
1/16"=1'-0"

DRAWING NO.:  
T3.7  
RECORD  
DRAWING



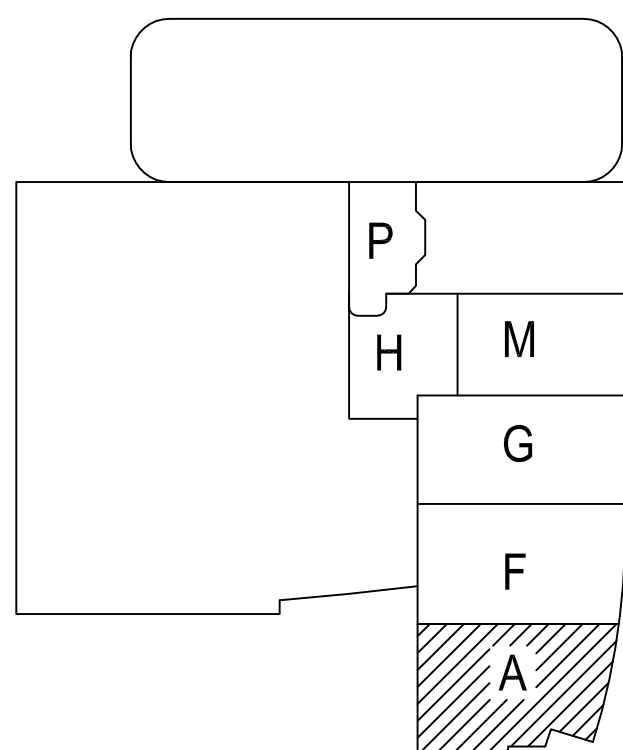
**SHEET KEYNOTES**

- 12" W X 6" H CABLE RUNWAY
- 24" W X 6" H CABLE RUNWAY
- 18" W X 6" H CABLE RUNWAY

**GENERAL SHEET NOTES**

- THE DRAWINGS ARE DIAGRAMMATIC ONLY AND MAY NOT SHOW ALL COMPONENTS, MATERIALS, OFFSETS, BENDS, ELBOWS AND OTHER SPECIFIC ELEMENTS THAT MAY BE REQUIRED FOR A COMPLETE INSTALLATION. THE CONTRACTOR SHALL BE RESPONSIBLE FOR PROVIDING ALL MATERIALS NEEDED FOR A COMPLETE AND FUNCTIONAL INSTALLATION.
- ELECTRIC EQUIPMENT AND DEVICES (E.G. PBX, NETWORK SWITCHES) ARE SHOWN FOR REFERENCE ONLY.
- REFER TO ARCHITECTURAL DETAIL PLANS FOR FINAL PATIENT ROOM DEVICE LOCATIONS. REFER TO ARCHITECTURAL DETAILS FOR OVERCOUNTER WAD HEIGHTS. REFER TO ARCHITECTURAL DETAILS FOR WALL MOUNT WAD HEIGHTS.
- HORIZONTAL DATA/VOICE/VIDEO CABLE SHALL TERMINATE IN THE TECHNOLOGY ROOM ON THE SAME FLOOR AS THE WORK AREA OUTLETS.
- WORK AREA OUTLETS SHALL CONSIST OF SINGLE PLASTER REDUCING RINGS INSTALLED ON OVERSIZE DOUBLE GANG BACKBOXES, UNLESS OTHERWISE NOTED.
- TV COAX CABLES SHALL BE COILED IN THE RESPECTIVE TECHNOLOGY ROOMS WITH A 20' SERVICE LOOP PRIOR TO TERMINATIONS. COILS SHALL BE SECURED TO THE AUDIOVISUAL WALL FIELD FOR AV CONTRACTOR.
- COMMON LOW VOLTAGE CABLE TRAY IS SIZED AS INDICATED ON THE DRAWINGS. PROVIDE ALL MATERIALS AS NEEDED FOR A COMPLETE, MANUFACTURER-APPROVED SYSTEM USING CABLE TRAY MANUFACTURERS' MATERIALS AND PARTS WHEN AVAILABLE FROM THE MANUFACTURER AND AS INTENDED. REFER TO DRAWING T4.01 FOR DETAILS. ALL CHANGES IN DIRECTION AND INTERSECTIONS SHALL USE PRE-MANUFACTURED OR FIELD-INSTALLED SWEEPS AND TEES. ALL SWEEPS AND TEES SHALL MAINTAIN A 1 FOOT MINIMUM RADIUS IN CHANGES OF DIRECTION.
- CABLE TRAY SHALL NOT PENETRATE WALLS. PROVIDE TRANSITION FROM CABLE TRAY TO LISTED FIRESTOP ASSEMBLIES IN ORDER TO PENETRATE FIRE/SMOKE WALLS. TRANSITION TO 4" CONDUITS/SLEEVES FOR NON-RATED WALLS. PROVIDE SUFFICIENT CONDUITS/SLEEVES TO ACCOMMODATE 100% VISUAL CABLE TRAY LOAD AT 50% VISUAL CONDUIT FILL.
- REFER TO ELECTRICAL DRAWINGS & SPECIFICATIONS FOR SHARED FLOOR BOXES & LOW VOLTAGE CONDUIT.
- PROVIDE BRACING TO MEET OSHPD SEISMIC REQUIREMENTS. REFER TO SHEET T4.02 FOR MORE INFORMATION.
- PROVIDE ALL OUTLET CONDUITS FROM WORK AREA OUTLETS, DEVICES OR PULL BOXES TO NEAREST CABLE TRAY.
- INSTALL CABLE TRAY @ 6" ABOVE CEILING.

**KEY PLAN**



**T3 LEVEL 7 - TELECOM PLAN - AREA A**  
1/4" = 1'-0"

**PROJECT:** CHILDREN'S HOSPITAL  
OF ORANGE COUNTY - TOWER II

**ADDRESS:** 455 South Main Street  
Orange, CA 92668-3874

**W.O. NO.:** 12684

**PROPRIETARY STATEMENT**  
THESE DRAWINGS/DOCUMENTS HEREON ATTACHED ARE THE PROPERTY OF BERGELECTRIC CORPORATION. ANY REUSE OR REPRODUCTION OF THESE DOCUMENTS WITHOUT WRITTEN PERMISSION OF BERGELECTRIC CORPORATION IS STRICTLY FORBIDDEN. ALL RIGHTS RESERVED.

**DRAWN BY:**  
J. RAMIREZ

**DESIGN SUPERVISOR:**

**INSTALL SUPERVISOR:**  
Scott Adams  
Tel Data Systems  
Bergelectric Corporation  
650 Oppen Street  
Escondido, CA 92029

REVISION:
05-30-12 RECORD DRAWINGS

**SHEET TITLE:**

**TELECOM  
FLOOR PLAN  
LEVEL 7  
AREA-A**

**SCALE:**  
1/4"=1'0"

**DRAWING NO. :**

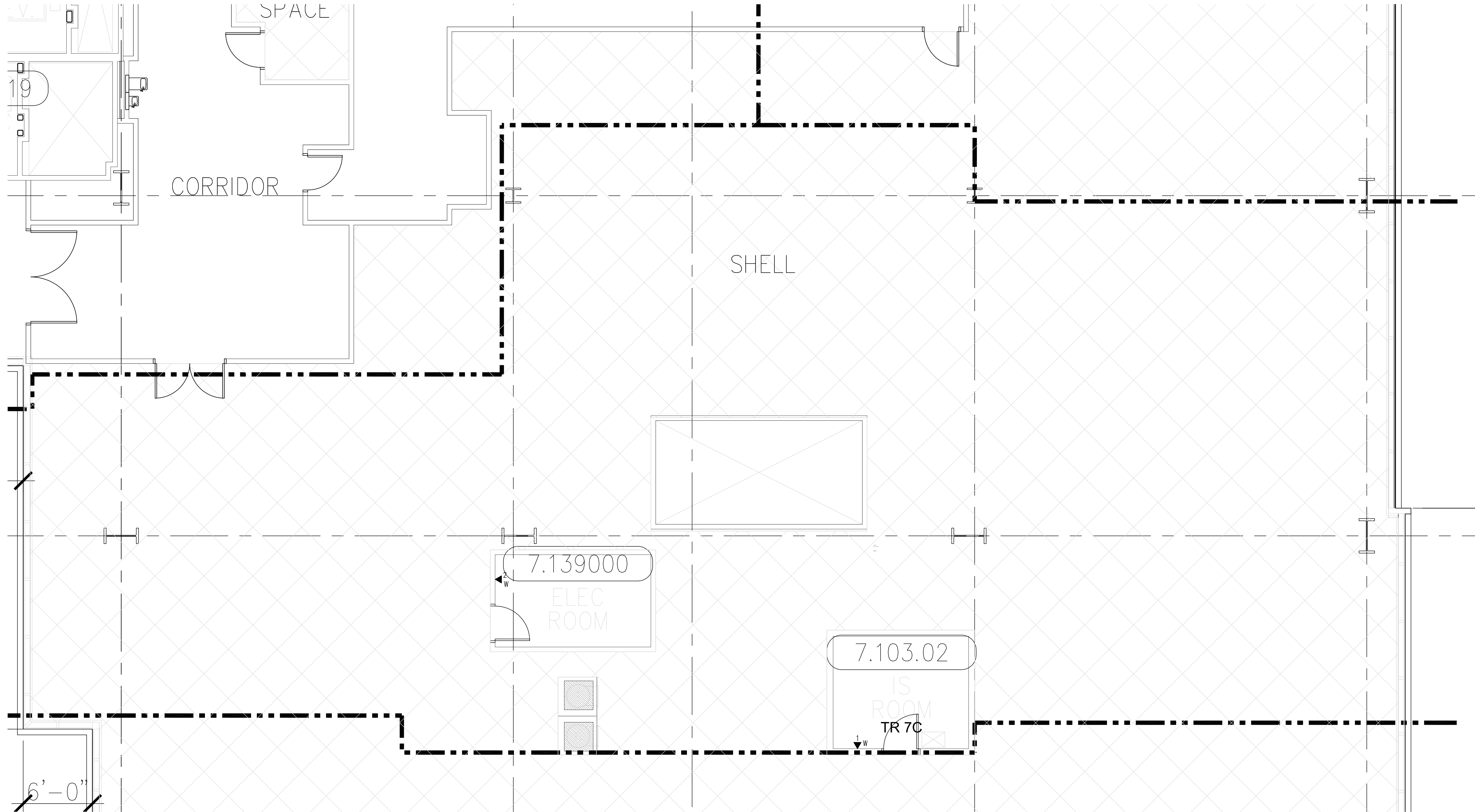
**T3.7A  
RECORD  
DRAWING**



1. THE DRAWINGS ARE DIAGRAMATIC ONLY AND MAY NOT SHOW ALL COMPONENTS, MATERIALS, OFFSETS, BENDS, ELBOWS AND OTHER SPECIFIC ELEMENTS THAT MAY BE REQUIRED FOR A COMPLETE INSTALLATION. THE CONTRACTOR SHALL BE RESPONSIBLE FOR PROVIDING ALL MATERIALS NEEDED FOR A COMPLETE AND FUNCTIONAL INSTALLATION.	2. ELECTRIC EQUIPMENT AND DEVICES (E.G. PEX, NETWORK SWITCHES) ARE SHOWN FOR REFERENCE ONLY.	3. REFER TO ARCHITECTURAL DETAILS PLAN FOR FINAL PATIENT ROOM DEVICE LOCATIONS. REFER TO ARCHITECTURAL DETAILS FOR OVERCOUNTER WAO HEIGHTS. REFER TO ARCHITECTURAL DETAILS FOR WALL-ABOUT WAO HEIGHTS.	4. HORIZONTAL DATA/VOICE/VIDEO CABLE SHALL TERMINATE IN THE TECHNOLOGY ROOM ON THE SAME FLOOR AS THE WORK AREA OUTLETS.	5. WORK AREA OUTLETS SHALL CONSIST OF SINGLE PLASTER REDUCING RINGS INSTALLED ON OVERSIZE DOUBLE GANG BACKBOXES, UNLESS OTHERWISE NOTED.	6. TV COAX CABLES SHALL BE COILED IN THE RESPECTIVE TECHNOLOGY ROOMS WITH A 20' SERVICE LOOP PRIOR TO TERMINATIONS. COXS SHALL BE SECURED TO THE AUDIOVISUAL WAF FIELD FOR A/I CONTRACTOR.	7. COMMON LOW VOLTAGE CABLE TRAY IS SIZED AS INDICATED ON THE DRAWINGS. PROVIDE ALL MATERIALS AS REQUIRED FOR A COMPLETE, MANUFACTURER-APPROVED SYSTEM USING CABLE TRAY MANUFACTURERS' MATERIALS AND PARTS WHEN AVAILABLE FROM THE MANUFACTURER AND AS INTENDED. REFER TO DRAWING 7-4.0 FOR DETAILS. ALL CHANGES IN DIRECTION AND INTERSECTIONS SHALL USE PEX/ANALOG/VIDEO FIELD-INSTALLED SWEETS AND TEES. ALL SWEETS AND TEES SHALL MAINTAIN A 1' FOOT MINIMUM RADII IN CHANGES OF DIRECTION.	8. CABLE TRAY SHALL NOT PENETRATE WALLS. PROVIDE TRANSITION FROM CABLE TRAY TO LISTED FIRESTOP ASSEMBLIES IN ORDER TO PENETRATE FIRE/SMOKE WALLS. TRANSITION TO 4" CONDUITS/SLEEVES FOR NON-RATED WALLS. PROVIDE SUFFICIENT CONDUITS/SLEEVES TO ACCOMMODATE 100% VISUAL CABLE TRAY LOAD AT 50% VISUAL CONDUIT FILL.	9. REFER TO ELECTRICAL DRAWINGS & SPECIFICATIONS FOR SHARED FLOOR BOXES & LOW VOLTAGE CONDUIT.	10. PROVIDE BRACING TO MEET OSHPD SEISMIC REQUIREMENTS. REFER TO SHEET 7-4.02 FOR MORE INFORMATION.	11. PROVIDE ALL OUTLET CONDUITS FROM WORK AREA OUTLETS, DEVICES OR PULL BOXES TO NEAREST CABLE TRAY.	12. INSTALL CABLE TRAY @ 8" ABOVE CEILING.
--	--	--	---	--	--	---	---	--	---	--	--

T3.7F  
RECORD  
DRAWING





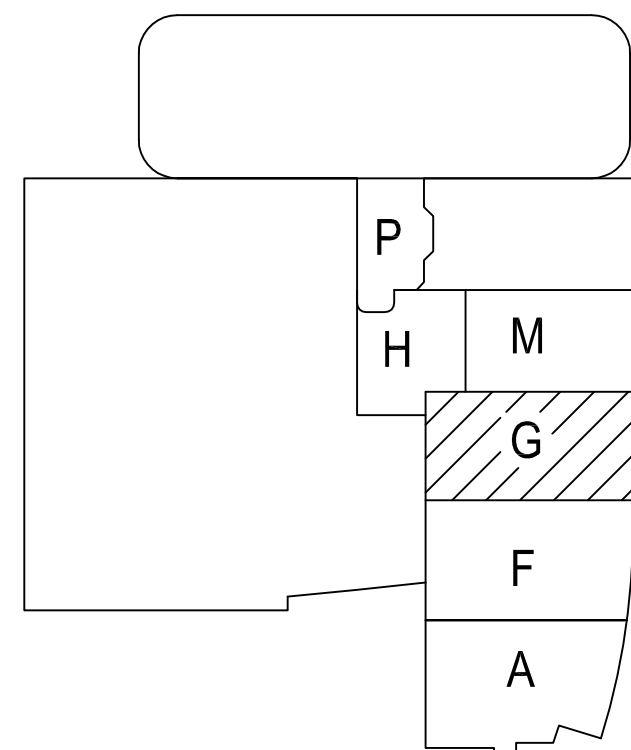
**SHEET KEYNOTES**

- 12"W X 6"H CABLE RUNWAY
- 24"W X 6"H CABLE RUNWAY
- 18"W X 6"H CABLE RUNWAY
- 24"W X 6"H CABLE RUNWAY FOR BACKBONE CABLES
- THREE 4" CONDUITS

**GENERAL SHEET NOTES**

- THE DRAWINGS ARE DIAGRAMMATIC ONLY AND MAY NOT SHOW ALL COMPONENTS, MATERIALS, OFFSETS, BENDS, ELBOWS AND OTHER SPECIFIC ELEMENTS THAT MAY BE REQUIRED FOR A COMPLETE INSTALLATION. THE CONTRACTOR SHALL BE RESPONSIBLE FOR PROVIDING ALL MATERIALS NEEDED FOR A COMPLETE AND FUNCTIONAL INSTALLATION.
- ELECTRIC EQUIPMENT AND DEVICES (E.G. PBX, NETWORK SWITCHES) ARE SHOWN FOR REFERENCE ONLY.
- REFER TO ARCHITECTURAL DETAIL PLANS FOR FINAL PATIENT ROOM DEVICE LOCATIONS. REFER TO ARCHITECTURAL DETAILS FOR OVERCOUNTER WAO HEIGHTS. REFER TO ARCHITECTURAL DETAILS FOR WALL-MOUNT WAO HEIGHTS.
- HORIZONTAL DATA/VOICE/VIDEO CABLE SHALL TERMINATE IN THE TECHNOLOGY ROOM ON THE SAME FLOOR AS THE WORK AREA OUTLETS.
- WORK AREA OUTLETS SHALL CONSIST OF SINGLE PLASTER REDUCING RINGS INSTALLED ON OVERSIZE DOUBLE GANG BACKBOXES, UNLESS OTHERWISE NOTED.
- TV COAX CABLES SHALL BE COILED IN THE RESPECTIVE TECHNOLOGY ROOMS WITH A 20' SERVICE LOOP PRIOR TO TERMINATIONS. COILS SHALL BE SECURED TO THE AUDIOVISUAL WALL FIELD FOR AV CONTRACTOR.
- COMMON LOW VOLTAGE CABLE RUNWAY IS 24" W X 6" HIGH. PROVIDE ALL MATERIALS AS NEEDED FOR A COMPLETE, MANUFACTURER-APPROVED SYSTEM USING CABLE TRAY MANUFACTURERS' MATERIALS AND PARTS WHEN AVAILABLE FROM THE MANUFACTURER AND AS INTENDED. REFER TO DRAWING T4.01 FOR DETAILS. ALL CHANGES IN DIRECTION AND INTERSECTIONS SHALL USE PRE-MANUFACTURED OR FIELD-INSTALLED SWEEPS AND TEES. ALL SWEEPS AND TEES SHALL MAINTAIN A 1 FOOT MINIMUM RADIUS IN CHANGES OF DIRECTION.
- CABLE TRAY SHALL NOT PENETRATE WALLS. PROVIDE TRANSITION FROM CABLE TRAY TO LISTED FIRESTOP ASSEMBLIES IN ORDER TO PENETRATE FIRE-SMOKE WALLS. TRANSITION TO 4" CONDUITS/SLEEVES FOR NON-RATED WALLS. PROVIDE SUFFICIENT CONDUITS/SLEEVES TO ACCOMMODATE 100% VISUAL CABLE TRAY LOAD AT 50% VISUAL CONDUIT FILL.
- REFER TO ELECTRICAL DRAWINGS & SPECIFICATIONS FOR SHARED FLOOR BOXES & LOW VOLTAGE CONDUIT.
- PROVIDE BRACING TO MEET OSHPD SEISMIC REQUIREMENTS. REFER TO SHEET T4.02 FOR MORE INFORMATION.
- PROVIDE ALL OUTLET CONDUITS FROM WORK AREA OUTLETS, DEVICES OR PULL BOXES TO NEAREST CABLE TRAY.
- INSTALL CABLE TRAY @ 6" ABOVE CEILING.

**KEY PLAN**



**T3** LEVEL 7 - TELECOM PLAN - AREA G  
1/4" = 1'-0"

**PROJECT:** CHILDREN'S HOSPITAL  
OF ORANGE COUNTY - TOWER II  
**ADDRESS:** 455 South Main Street  
Orange, CA 92668-3874  
**W.O. NO.:** 12684

**PROPRIETARY STATEMENT**  
THESE DRAWINGS DOCUMENTS HEREON ATTACHED ARE THE PROPERTY OF BERGELECTRIC CORPORATION. ANY REUSE OR REPRODUCTION OF THESE DOCUMENTS WITHOUT WRITTEN PERMISSION OF BERGELECTRIC CORPORATION IS STRICTLY FORBIDDEN. ALL RIGHTS RESERVED.

**DRAWN BY:**  
J. RAMIREZ

**DESIGN SUPERVISOR:**

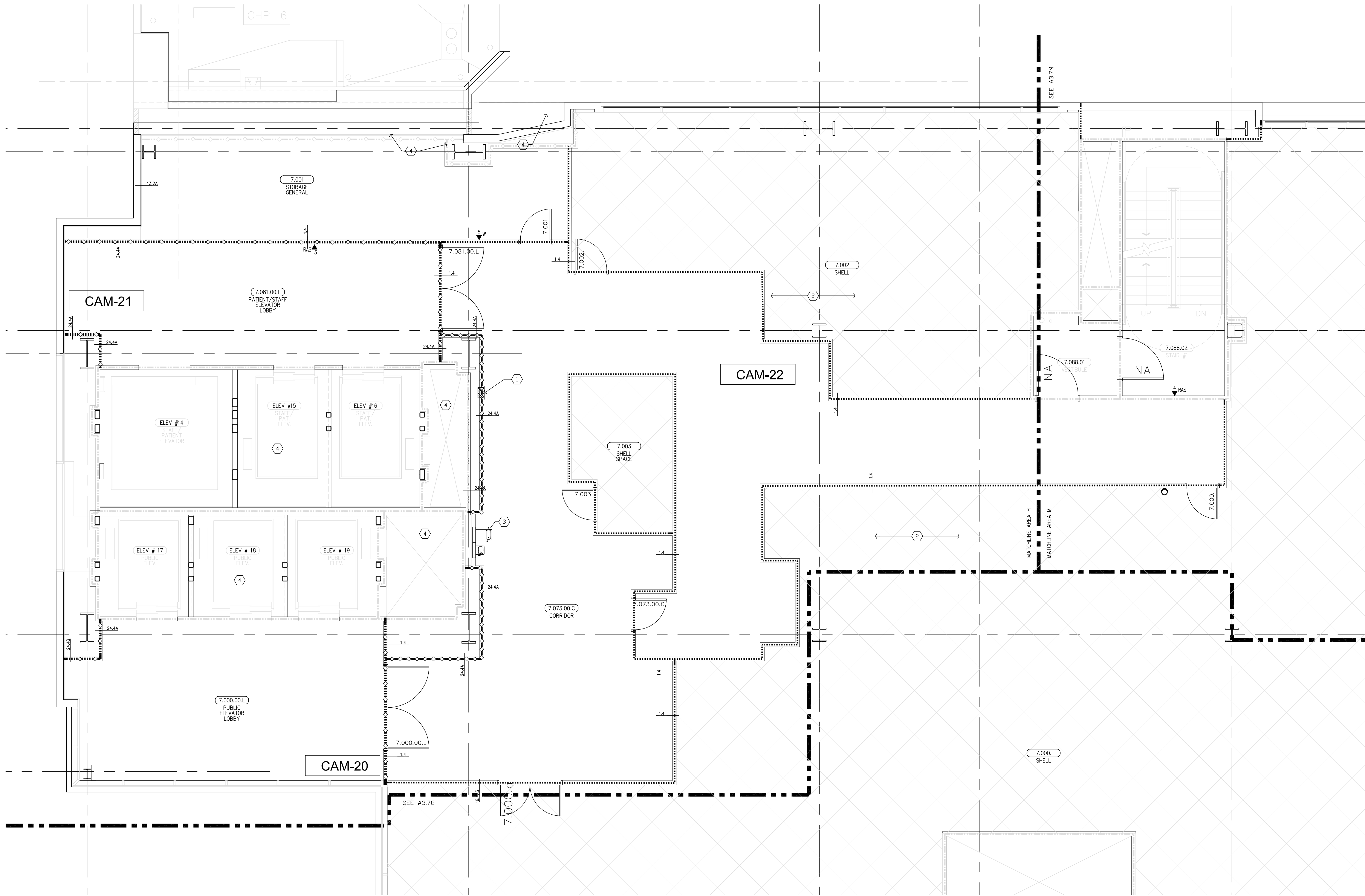
**INSTALL SUPERVISOR:**  
Scott Adams  
Tel Data Systems  
Bergelectric Corporation  
650 Oppeer Street  
Escondido, CA 92029

REVISION:
05-30-12 RECORD DRAWINGS

**SHEET TITLE:**  
**TELECOM  
FLOOR PLAN  
LEVEL 7  
AREA-G**

**SCALE:**  
1/4"=1'0"

**DRAWING NO. :**  
**T3.7G  
RECORD  
DRAWING**



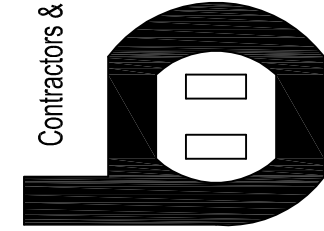
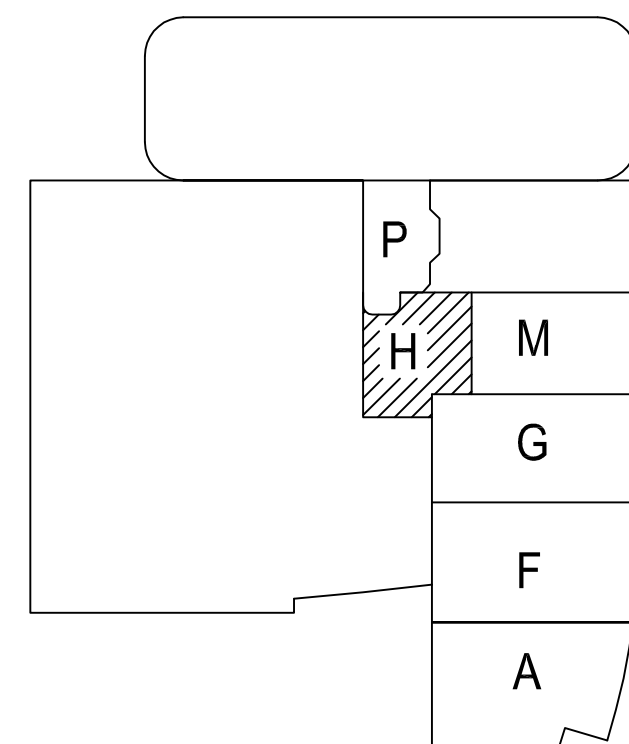
SHEET KEYNOTES

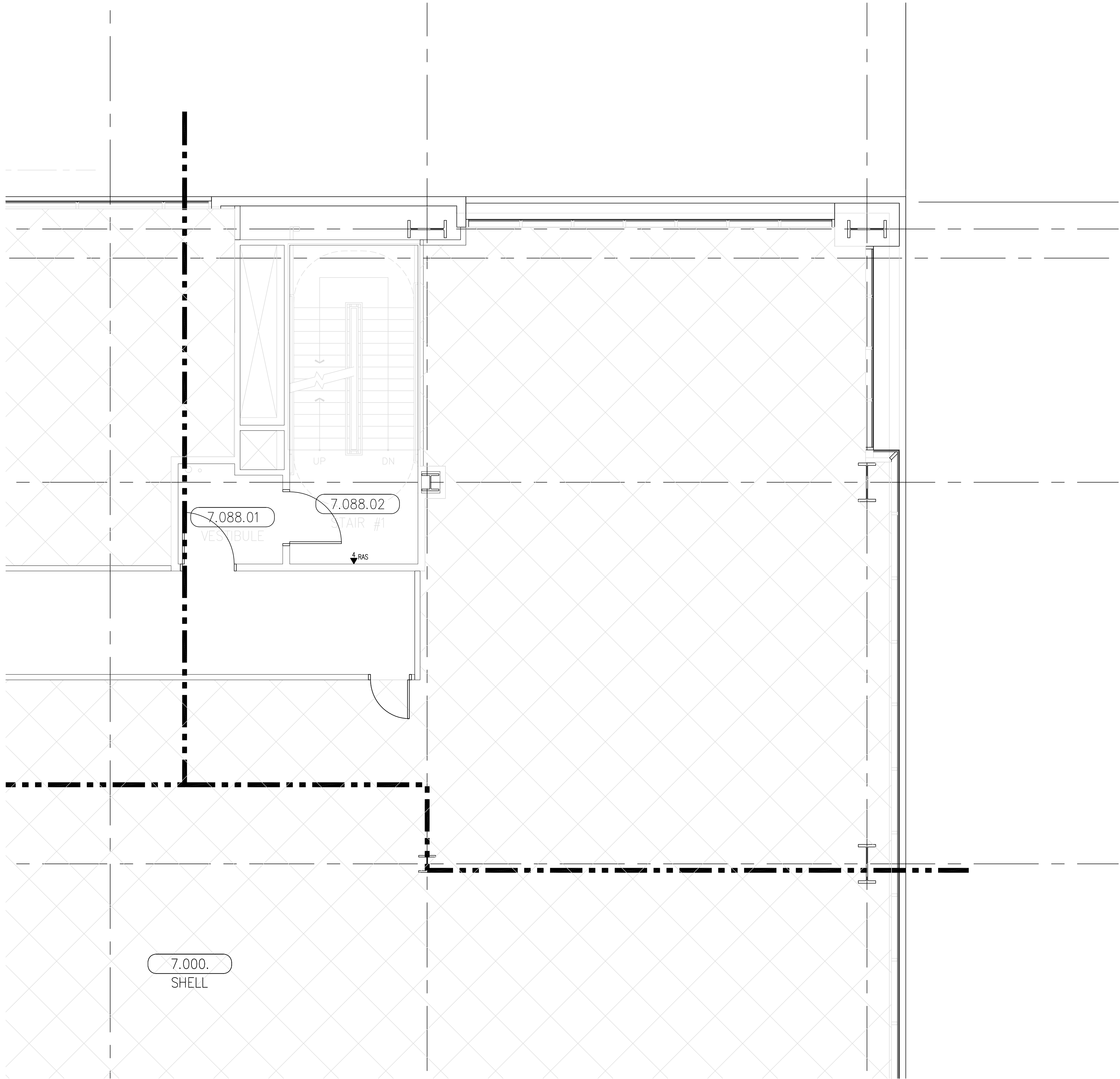
- 12" W X 6" H CABLE RUNWAY
- 24" W X 6" H CABLE RUNWAY
- 18" W X 6" H CABLE RUNWAY

GENERAL SHEET NOTES

- THE DRAWINGS ARE DIAGRAMMATIC ONLY AND MAY NOT SHOW ALL COMPONENTS, MATERIALS, OFFSETS, BENDS, ELBOWS AND OTHER SPECIFIC ELEMENTS THAT MAY BE REQUIRED FOR A COMPLETE INSTALLATION. THE CONTRACTOR SHALL BE RESPONSIBLE FOR PROVIDING ALL MATERIALS NEEDED FOR A COMPLETE AND FUNCTIONAL INSTALLATION.
- ELECTRIC EQUIPMENT AND DEVICES (E.G. PBX, NETWORK SWITCHES) ARE SHOWN FOR REFERENCE ONLY.
- REFER TO ARCHITECTURAL DETAIL PLANS FOR FINAL PATIENT ROOM DEVICE LOCATIONS. REFER TO ARCHITECTURAL DETAILS FOR OVERCOUNTER WAO HEIGHTS. REFER TO ARCHITECTURAL DETAILS FOR WALL-MOUNT WAO HEIGHTS.
- HORIZONTAL DATA/VOICE/VIDEO CABLE SHALL TERMINATE IN THE TECHNOLOGY ROOM ON THE SAME FLOOR AS THE WORK AREA OUTLETS.
- WORK AREA OUTLETS SHALL CONSIST OF SINGLE PLASTER REDUCING RINGS INSTALLED ON OVERSIZE DOUBLE GANG BACKBOXES, UNLESS OTHERWISE NOTED.
- TV COAX CABLES SHALL BE COILED IN THE RESPECTIVE TECHNOLOGY ROOMS WITH A 20' SERVICE LOOP PRIOR TO TERMINATIONS. COILS SHALL BE SECURED TO THE AUDIOVISUAL WALL FIELD FOR A/C CONTRACTOR.
- COMMON LOW VOLTAGE CABLE TRAY IS SIZED AS INDICATED ON THE DRAWINGS. PROVIDE ALL MATERIALS AS NEEDED FOR A COMPLETE, MANUFACTURER-APPROVED SYSTEM USING CABLE TRAY MANUFACTURERS' MATERIALS AND PARTS WHEN AVAILABLE FROM THE MANUFACTURER AND AS INTENDED. REFER TO DRAWING T4.01 FOR DETAILS. ALL CHANGES IN DIRECTION AND INTERSECTIONS SHALL USE PRE-MANUFACTURED OR FIELD-INSTALLED SWEEPS AND TEES. ALL SWEEPS AND TEES SHALL MAINTAIN A 1 FOOT MINIMUM RADIUS IN CHANGES OF DIRECTION.
- CABLE TRAY SHALL NOT PENETRATE WALLS. PROVIDE TRANSITION FROM CABLE TRAY TO LISTED FIRESTOP ASSEMBLIES IN ORDER TO PENETRATE FIRE-RISKING WALLS. TRANSITION TO 4" CONDUITS/SLEEVES FOR NON-RATED WALLS. PROVIDE SUFFICIENT CONDUITS/SLEEVES TO ACCOMMODATE 100% VISUAL CABLE TRAY LOAD AT 50% VISUAL CONDUIT FILL.
- REFER TO ELECTRICAL DRAWINGS & SPECIFICATIONS FOR SHARED FLOOR BOXES & LOW VOLTAGE CONDUIT.
- PROVIDE BRACING TO MEET OSHA-1910 SEISMIC REQUIREMENTS. REFER TO SHEET T4.02 FOR MORE INFORMATION.
- PROVIDE ALL OUTLET CONDUITS FROM WORK AREA OUTLETS, DEVICES OR PULL BOXES TO NEAREST CABLE TRAY.
- INSTALL CABLE TRAY @ 8" ABOVE CEILING.

KEY PLAN





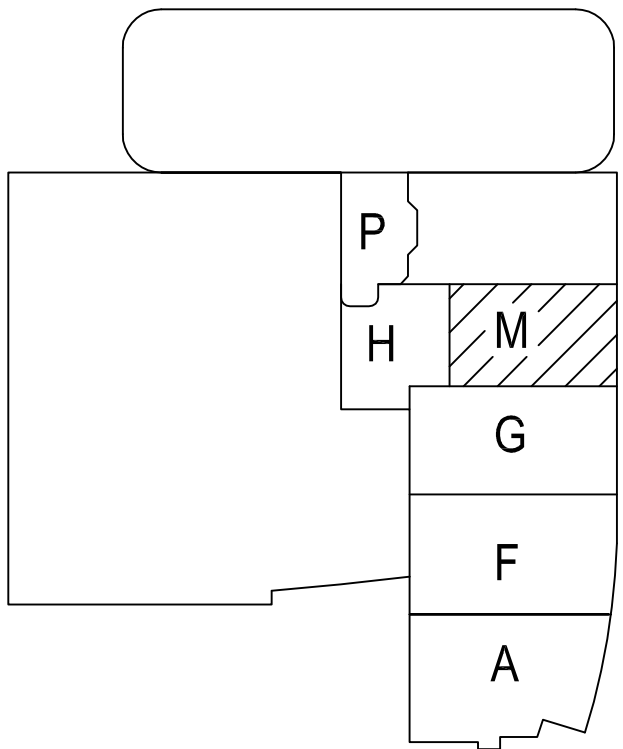
**SHEET KEYNOTES**

- 12" W X 6" H CABLE RUNWAY
- 24" W X 6" H CABLE RUNWAY
- 18" W X 6" H CABLE RUNWAY

**GENERAL SHEET NOTES**

- THE DRAWINGS ARE DIAGRAMMATIC ONLY AND MAY NOT SHOW ALL COMPONENTS, MATERIALS, OFFSETS, BENDS, ELBOWS AND OTHER SPECIFIC ELEMENTS THAT MAY BE REQUIRED FOR A COMPLETE INSTALLATION. THE CONTRACTOR SHALL BE RESPONSIBLE FOR PROVIDING ALL MATERIALS NEEDED FOR A COMPLETE AND FUNCTIONAL INSTALLATION.
- ELECTRIC EQUIPMENT AND DEVICES (E.G. PBX, NETWORK SWITCHES) ARE SHOWN FOR REFERENCE ONLY.
- REFER TO ARCHITECTURAL DETAIL PLANS FOR FINAL PATIENT ROOM DEVICE LOCATIONS. REFER TO ARCHITECTURAL DETAILS FOR OVERCOUNTER WAO HEIGHTS. REFER TO ARCHITECTURAL DETAILS FOR WALL-MOUNT WAO HEIGHTS.
- HORIZONTAL DATA/VOICE/VIDEO CABLE SHALL TERMINATE IN THE TECHNOLOGY ROOM ON THE SAME FLOOR AS THE WORK AREA OUTLETS.
- WORK AREA OUTLETS SHALL CONSIST OF SINGLE PLASTER REDUCING RINGS INSTALLED ON OVERSIZE DOUBLE GANG BACKBOXES, UNLESS OTHERWISE NOTED.
- TV COAX CABLES SHALL BE COILED IN THE RESPECTIVE TECHNOLOGY ROOMS WITH A 20' SERVICE LOOP PRIOR TO TERMINATIONS. COILS SHALL BE SECURED TO THE AUDIOVISUAL WALL FIELD FOR AV CONTRACTOR.
- COMMON LOW VOLTAGE CABLE TRAY IS SIZED AS INDICATED ON THE DRAWINGS. PROVIDE ALL MATERIALS AS NEEDED FOR A COMPLETE, MANUFACTURER-APPROVED SYSTEM USING CABLE TRAY MANUFACTURERS' MATERIALS AND PARTS WHEN AVAILABLE FROM THE MANUFACTURER AND AS INTENDED. REFER TO DRAWING T4.01 FOR DETAILS. ALL CHANGES IN DIRECTION AND INTERSECTIONS SHALL USE PRE-MANUFACTURED OR FIELD-INSTALLED SWEEPS AND TEES. ALL SWEEPS AND TEES SHALL MAINTAIN A 1 FOOT MINIMUM RADIUS IN CHANGES OF DIRECTION.
- CABLE TRAY SHALL NOT PENETRATE WALLS. PROVIDE TRANSITION FROM CABLE TRAY TO LISTED FIRESTOP ASSEMBLIES IN ORDER TO PENETRATE FIRE/SMOKE WALLS. TRANSITION TO 4" CONDUITS/SLEEVES FOR NON-RATED WALLS. PROVIDE SUFFICIENT CONDUITS/SLEEVES TO ACCOMMODATE 100% VISUAL CABLE TRAY LOAD AT 50% VISUAL CONDUIT FILL.
- REFER TO ELECTRICAL DRAWINGS & SPECIFICATIONS FOR SHARED FLOOR BOXES & LOW VOLTAGE CONDUIT.
- PROVIDE BRACING TO MEET OSHPD SEISMIC REQUIREMENTS. REFER TO SHEET T4.02 FOR MORE INFORMATION.
- PROVIDE ALL OUTLET CONDUITS FROM WORK AREA OUTLETS, DEVICES OR PULL BOXES TO NEAREST CABLE TRAY.
- INSTALL CABLE TRAY @ 8" ABOVE CEILING.

**KEY PLAN**



**T3** LEVEL 7 - TELECOM PLAN - AREA M  
1/4" = 1'-0"

**PROJECT:** CHILDREN'S HOSPITAL  
OF ORANGE COUNTY - TOWER II  
**ADDRESS:** 455 South Main Street  
Orange, CA 92668-3874  
**W.O. NO.:** 12684

**PROPRIETARY STATEMENT**  
THESE DRAWINGS AND DOCUMENTS HEREIN ARE THE PROPERTY OF BERGELECTRIC CORPORATION. ANY REUSE OR REPRODUCTION OF THESE DOCUMENTS WITHOUT WRITTEN PERMISSION OF BERGELECTRIC CORPORATION IS STRICTLY FORBIDDEN. ALL RIGHTS RESERVED.

**DRAWN BY:**  
J. RAMIREZ

**DESIGN SUPERVISOR:**

**INSTALL SUPERVISOR:**  
Scott Adams  
Tel Data Systems  
Bergelectric Corporation  
650 Upper Street  
Escondido, CA 92029

**REVISIONS:**  
05-30-12 RECORD DRAWINGS

**SHEET TITLE:**  
TELECOM  
FLOOR PLAN  
LEVEL 7  
AREA-M

**SCALE:**  
1/4"=1'0"

**DRAWING NO.:**  
**T3.7M**  
**RECORD  
DRAWING**