

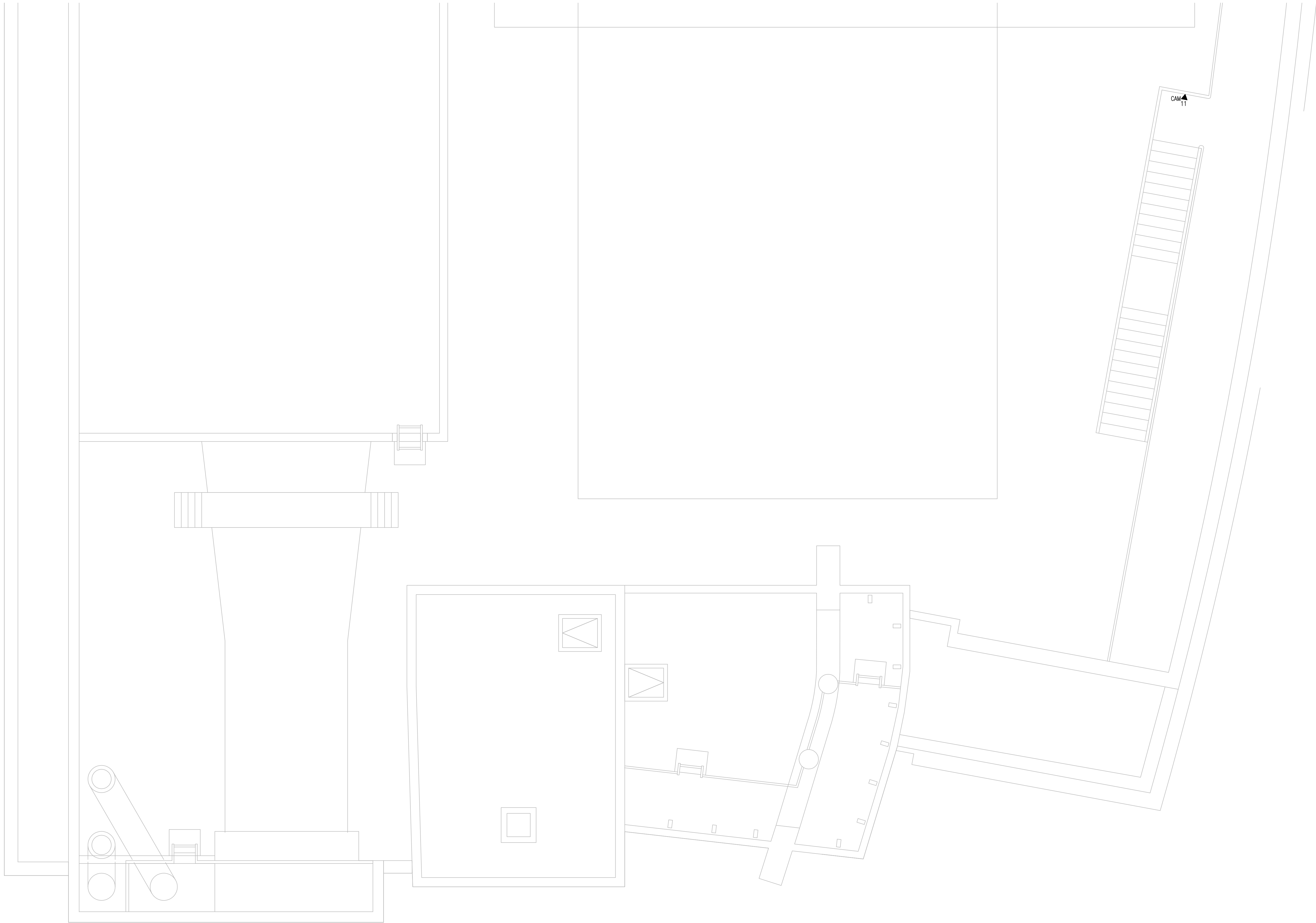


SHEET KEYNOTES

- 12"W X 6"H CABLE RUNWAY
- 24"W X 6"H CABLE RUNWAY
- 18"W X 6"H CABLE RUNWAY
- OUTLETS ARE TO BE FED VIA WALL FROM ABOVE CEILING SPACE. PROVIDE TWO (2) 1/4" CONDUITS FROM CABLE RUNWAY TO MILLWORK. TERMINATE CONDUITS AT 24" A.F.F. AND EXTEND ONTO MILLWORK USING NON-METALLIC SURFACE RACEWAYS WITH MINIMUM OF 1"X1" INTERNAL AREA TO EACH OUTLET.

GENERAL SHEET NOTES

- THE DRAWINGS ARE DIAGNOSTIC ONLY AND MAY NOT SHOW ALL COMPONENTS, MATERIALS, OFFSETS, BENDS, ELBOWS AND OTHER SPECIFIC ELEMENTS THAT MAY BE REQUIRED FOR A COMPLETE INSTALLATION. THE CONTRACTOR SHALL BE RESPONSIBLE FOR PROVIDING ALL MATERIALS NEEDED FOR A COMPLETE AND FUNCTIONAL INSTALLATION.
- ELECTRIC EQUIPMENT AND DEVICES (E.G. PBX, NETWORK SWITCHES) ARE SHOWN FOR REFERENCE ONLY.
- REFER TO ARCHITECTURAL DETAIL PLANS FOR FINAL PATIENT ROOM DEVICE LOCATIONS. REFER TO ARCHITECTURAL DETAILS FOR OVERCOUNTER WAO HEIGHTS. REFER TO ARCHITECTURAL DETAILS FOR WALL-MOUNT WAO HEIGHTS.
- HORIZONTAL DATA/VOICE/VIDEO CABLE SHALL TERMINATE IN THE TECHNOLOGY ROOM ON THE SAME FLOOR AS THE WORK AREA OUTLETS.
- WORK AREA OUTLETS SHALL CONSIST OF SINGLE PLASTER REDUCING RINGS INSTALLED ON OVERSIZE DOUBLE GANG BACKBOXES, UNLESS OTHERWISE NOTED.
- TV COAX CABLES SHALL BE COILED IN THE RESPECTIVE TECHNOLOGY ROOMS WITH A 20' SERVICE LOOP PRIOR TO TERMINATIONS. COILS SHALL BE SECURED TO THE AUDIOVISUAL WALL FIELD FOR AV CONTRACTOR.
- COMMON LOW VOLTAGE CABLE RUNWAY IS 24" W X 6" HIGH. PROVIDE ALL MATERIALS AS NEEDED FOR A COMPLETE, MANUFACTURER-APPROVED SYSTEM USING CABLE TRAY MANUFACTURERS' MATERIALS AND PARTS WHEN AVAILABLE FROM THE MANUFACTURER AND AS INTENDED. REFER TO DRAWING T4.01 FOR DETAILS. ALL CHANGES IN DIRECTION AND INTERSECTIONS SHALL USE PRE-MANUFACTURED OR FIELD-INSTALLED SWEEPS AND TEES. ALL SWEEPS AND TEES SHALL MAINTAIN A 1' FOOT MINIMUM RADIUS IN CHANGES OF DIRECTION.
- CABLE TRAY SHALL NOT PENETRATE WALLS. PROVIDE TRANSITION FROM CABLE TRAY TO LISTED FIRESTOP ASSEMBLIES IN ORDER TO PENETRATE FIRE/SMOKE WALLS. TRANSITION TO 4" CONDUITS/SLEEVES FOR NON-RATED WALLS. PROVIDE SUFFICIENT CONDUITS/SLEEVES TO ACCOMMODATE 100% VISUAL CABLE TRAY LOAD AT 50% VISUAL CONDUIT FILL.
- REFER TO ELECTRICAL DRAWINGS & SPECIFICATIONS FOR SHARED FLOOR BOXES & LOW VOLTAGE CONDUIT.
- PROVIDE BRACING TO MEET OSHPD SEISMIC REQUIREMENTS. REFER TO SHEET T4.02 FOR MORE INFORMATION.
- PROVIDE ALL OUTLET CONDUITS FROM WORK AREA OUTLETS, DEVICES OR PULL BOXES TO NEAREST CABLE TRAY.
- INSTALL CABLE TRAY @ 6" ABOVE CEILING.



○ SHEET KEYNOTES

- 12"W X 6"H CABLE RUNWAY
- 24"W X 6"H CABLE RUNWAY
- 18"W X 6"H CABLE RUNWAY
- OUTLETS ARE TO BE FED VIA WALL FROM ABOVE CEILING SPACE. PROVIDE TWO (2) 1-1/4" CONDUITS FROM CABLE RUNWAY TO MILLWORK. TERMINATE CONDUITS AT 24" A.F.F. AND EXTEND ONTO MILLWORK USING NON-METALLIC SURFACE RACEWAYS WITH MINIMUM OF 1"x1" INTERNAL AREA TO EACH OUTLET.

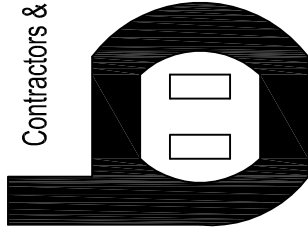
GENERAL SHEET NOTES

- THE DRAWINGS ARE DIAGRAMMATIC ONLY AND MAY NOT SHOW ALL COMPONENTS, MATERIALS, OFFSETS, BENDS, ELBOWS AND OTHER SPECIFIC ELEMENTS THAT MAY BE REQUIRED FOR A COMPLETE INSTALLATION. THE CONTRACTOR SHALL BE RESPONSIBLE FOR PROVIDING ALL MATERIALS NEEDED FOR A COMPLETE AND FUNCTIONAL INSTALLATION.
- ELECTRIC EQUIPMENT AND DEVICES (E.G. PBX, NETWORK SWITCHES) ARE SHOWN FOR REFERENCE ONLY.
- REFER TO ARCHITECTURAL DETAIL PLANS FOR FINAL PATIENT ROOM DEVICE LOCATIONS. REFER TO ARCHITECTURAL DETAILS FOR OVERCOUNTER WAO HEIGHTS. REFER TO ARCHITECTURAL DETAILS FOR WALL-MOUNT WAO HEIGHTS.
- HORIZONTAL DATA/VOICE/VIDEO CABLE SHALL TERMINATE IN THE TECHNOLOGY ROOM ON THE SAME FLOOR AS THE WORK AREA OUTLETS.
- WORK AREA OUTLETS SHALL CONSIST OF SINGLE PLASTER REDUCING RINGS INSTALLED ON OVERSIZE DOUBLE GANG BACKBOXES, UNLESS OTHERWISE NOTED.
- TV COAX CABLES SHALL BE COILED IN THE RESPECTIVE TECHNOLOGY ROOMS WITH A 20' SERVICE LOOP PRIOR TO TERMINATIONS. COILS SHALL BE SECURED TO THE AUDIO/VISUAL WALL FIELD FOR AV CONTRACTOR.
- COMMON LOW VOLTAGE CABLE RUNWAY IS 24" W X 6" HIGH. PROVIDE ALL MATERIALS AS NEEDED FOR A COMPLETE, MANUFACTURER-APPROVED SYSTEM USING CABLE TRAY MANUFACTURERS MATERIALS AND PARTS WHEN AVAILABLE FROM THE MANUFACTURER AND AS INTENDED. REFER TO DRAWING T4.01 FOR DETAILS. ALL CHANGES IN DIRECTION AND INTERSECTIONS SHALL USE PRE-MANUFACTURED OR FIELD-INSTALLED SWEEPS AND TEES. ALL SWEEPS AND TEES SHALL MAINTAIN A 1 FOOT MINIMUM RADIUS IN CHANGES OF DIRECTION.
- CABLE TRAY SHALL NOT PENETRATE WALLS. PROVIDE TRANSITION FROM CABLE TRAY TO LISTED FIRESTOP ASSEMBLIES IN ORDER TO PENETRATE FIRE/SMOKE WALLS. TRANSITION TO 4" CONDUITS/SLEEVES FOR NON-RATED WALLS. PROVIDE SUFFICIENT CONDUITS/SLEEVES TO ACCOMMODATE 100% VISUAL CABLE TRAY LOAD AT 50% VISUAL CONDUIT FILL.
- REFER TO ELECTRICAL DRAWINGS & SPECIFICATIONS FOR SHARED FLOOR BOXES & LOW VOLTAGE CONDUIT.
- PROVIDE BRACING TO MEET OSHPD SEISMIC REQUIREMENTS. REFER TO SHEET T4.02 FOR MORE INFORMATION.
- PROVIDE ALL OUTLET CONDUITS FROM WORK AREA OUTLETS, DEVICES OR PULL BOXES TO NEAREST CABLE TRAY.
- INSTALL CABLE TRAY @ 6" ABOVE CEILING.

T3 LEVEL P2 - TELECOM PLAN - AREA A

1/4" = 1'-0"

Bergelectric Corp.
Contractors & Engineers



#C10-485048
650 UPPER ST.
ESCONDIDO, CA 92029
(760) 742-1033
FAX (760) 742-4619

PROJECT: **CHILDREN'S HOSPITAL
OF ORANGE COUNTY - TOWER II**

ADDRESS: **455 South Main Street
Orange, CA 92668-3874**

W.O. NO.: **12684**

PROPRIETARY STATEMENT
THESE DRAWING DOCUMENTS HEREON ATTACHED ARE THE PROPERTY OF BERGELECTRIC CORPORATION ANY REUSE OR REPRODUCTION OF THESE DOCUMENTS WITHOUT WRITTEN PERMISSION OF BERGELECTRIC CORPORATION IS STRICTLY FORBIDDEN. ALL RIGHTS RESERVED.

DRAWN BY:
J.RAMIREZ

DESIGN SUPERVISOR:

INSTALL SUPERVISOR:

Scott Adams
Tel Data Systems
Bergelectric Corporation
650 Upper Street
Escondido, CA 92029

REVISIONS:	
05-30-12	RECORD DRAWINGS

SHEET TITLE:

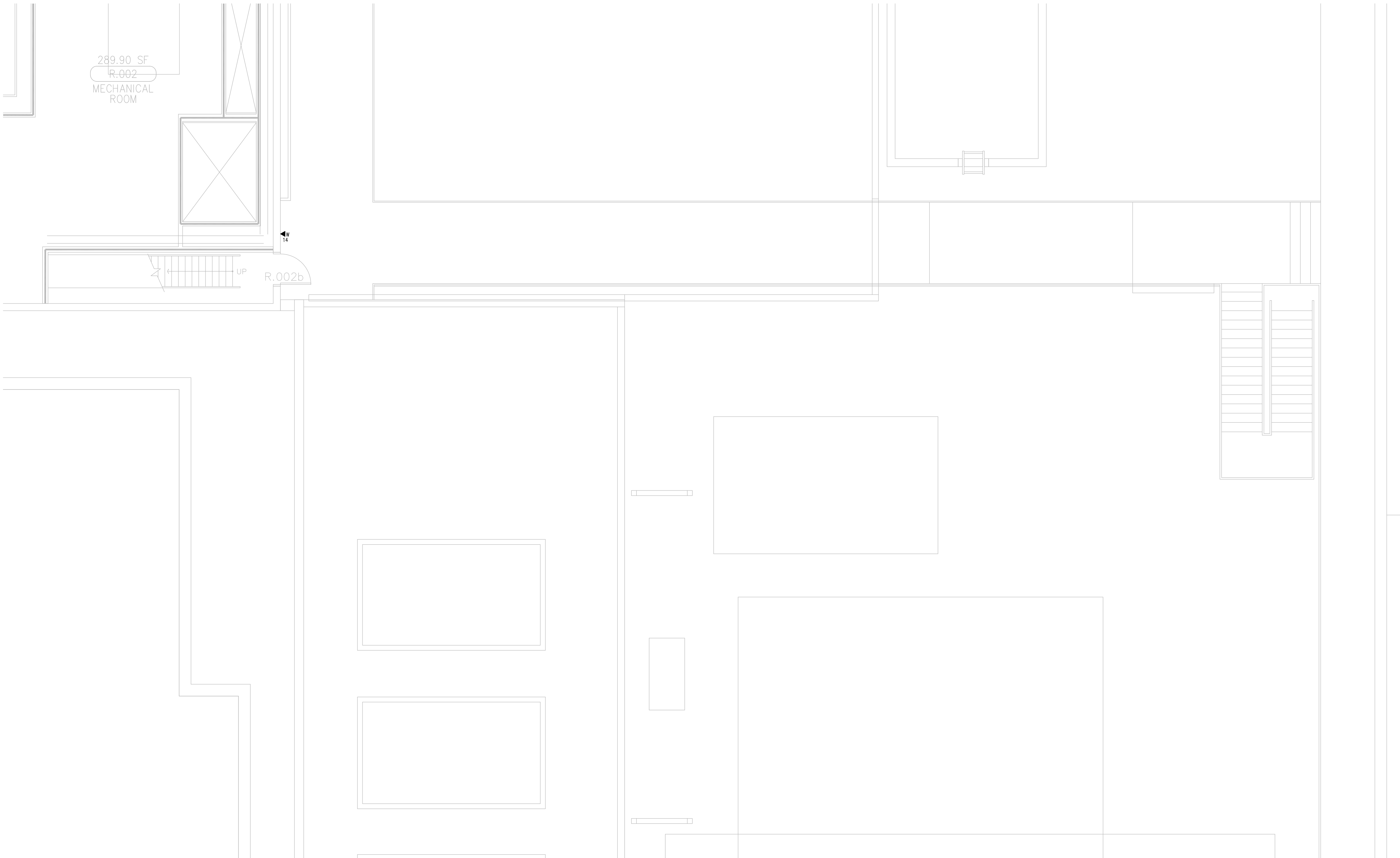
**TELECOM
FLOOR PLAN
LEVEL P2
AREA-A**

SCALE:

1/4"=1'0"

DRAWING NO.:

**T3.P2A
RECORD
DRAWING**



T3

LEVEL P2 - TELECOM PLAN - AREA G

1/4" = 1'-0"

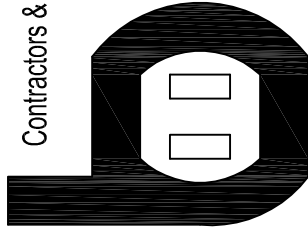
SHEET KEYNOTES

- 12"W X 6"H CABLE RUNWAY
- 24"W X 6"H CABLE RUNWAY
- 18"W X 6"H CABLE RUNWAY
- OUTLETS ARE TO BE FED VIA WALL FROM ABOVE CEILING SPACE. PROVIDE TWO (2) 1-1/4" CONDUITS FROM CABLE RUNWAY TO MILLWORK. TERMINATE CONDUITS AT 24" A.F.F. AND EXTEND ONTO MILLWORK USING NON-METALLIC SURFACE RACEWAYS WITH MINIMUM OF 1"x1" INTERNAL AREA TO EACH OUTLET.

GENERAL SHEET NOTES

- THE DRAWINGS ARE DIAGRAMMATIC ONLY AND MAY NOT SHOW ALL COMPONENTS, MATERIALS, OFFSETS, BENDS, ELBOWS AND OTHER SPECIFIC ELEMENTS THAT MAY BE REQUIRED FOR A COMPLETE INSTALLATION. THE CONTRACTOR SHALL BE RESPONSIBLE FOR PROVIDING ALL MATERIALS NEEDED FOR A COMPLETE AND FUNCTIONAL INSTALLATION.
- ELECTRIC EQUIPMENT AND DEVICES (E.G. PBX, NETWORK SWITCHES) ARE SHOWN FOR REFERENCE ONLY.
- REFER TO ARCHITECTURAL DETAIL PLANS FOR FINAL PATIENT ROOM DEVICE LOCATIONS. REFER TO ARCHITECTURAL DETAILS FOR OVERCOUNTER WAO HEIGHTS. REFER TO ARCHITECTURAL DETAILS FOR WALL-MOUNT WAO HEIGHTS.
- HORIZONTAL DATA/VOICE/VIDEO CABLE SHALL TERMINATE IN THE TECHNOLOGY ROOM ON THE SAME FLOOR AS THE WORK AREA OUTLETS.
- WORK AREA OUTLETS SHALL CONSIST OF SINGLE PLASTER REDUCING RINGS INSTALLED ON OVERSIZE DOUBLE GANG BACKBOXES, UNLESS OTHERWISE NOTED.
- TV COAX CABLES SHALL BE COILED IN THE RESPECTIVE TECHNOLOGY ROOMS WITH A 20' SERVICE LOOP PRIOR TO TERMINATIONS. COILS SHALL BE SECURED TO THE AUDIOVISUAL WALL FIELD FOR AV CONTRACTOR.
- COMMON LOW VOLTAGE CABLE RUNWAY IS 24" W X 6" HIGH. PROVIDE ALL MATERIALS AS NEEDED FOR A COMPLETE, MANUFACTURER-APPROVED SYSTEM USING CABLE TRAY MANUFACTURERS MATERIALS AND PARTS WHEN AVAILABLE FROM THE MANUFACTURER AND AS INTENDED. REFER TO DRAWING T4.01 FOR DETAILS. ALL CHANGES IN DIRECTION AND INTERSECTIONS SHALL USE PRE-MANUFACTURED OR FIELD-INSTALLED SWEEPS AND TEES. ALL SWEEPS AND TEES SHALL MAINTAIN A 1 FOOT MINIMUM RADIUS IN CHANGES OF DIRECTION.
- CABLE TRAY SHALL NOT PENETRATE WALLS. PROVIDE TRANSITION FROM CABLE TRAY TO LISTED FIRESTOP ASSEMBLIES IN ORDER TO PENETRATE FIRE/SMOKE WALLS. TRANSITION TO 4" CONDUITS/SLEEVES FOR NON-RATED WALLS. PROVIDE SUFFICIENT CONDUITS/SLEEVES TO ACCOMMODATE 100% VISUAL CABLE TRAY LOAD AT 50% VISUAL CONDUIT FILL.
- REFER TO ELECTRICAL DRAWINGS & SPECIFICATIONS FOR SHARED FLOOR BOXES & LOW VOLTAGE CONDUIT.
- PROVIDE BRACING TO MEET OSHPD SEISMIC REQUIREMENTS. REFER TO SHEET T4.02 FOR MORE INFORMATION.
- PROVIDE ALL OUTLET CONDUITS FROM WORK AREA OUTLETS, DEVICES OR PULL BOXES TO NEAREST CABLE TRAY.
- INSTALL CABLE TRAY @ 6" ABOVE CEILING.

Bergelectric Corp.
Contractors & Engineers



#C10-485048
650 UPPER ST.
ESCONDIDO, CA 92029
(760) 745-1033
FAX (760) 745-4619

PROJECT: CHILDREN'S HOSPITAL
OF ORANGE COUNTY - TOWER II

ADDRESS: 455 South Main Street
Orange, CA 92668-3874
W.O. NO.: 12684

PROPRIETARY STATEMENT
THESE DRAWING DOCUMENTS HEREON ATTACHED ARE THE
PROPERTY OF BERGELECTRIC CORPORATION ANY REUSE OR
REPRODUCTION OF THESE DOCUMENTS WITHOUT WRITTEN
PERMISSION OF BERGELECTRIC CORPORATION IS STRICTLY
FORBIDDEN. ALL RIGHTS RESERVED.

DRAWN BY:
J. RAMIREZ

DESIGN SUPERVISOR:

INSTALL SUPERVISOR:

Scott Adams
Tel Data Systems
Bergelectric Corporation
650 Upper Street
Escondido, CA 92029

REVISION:
05-30-12 RECORD DRAWINGS

SHEET TITLE:

TELECOM
FLOOR PLAN
LEVEL P2
AREA-G

SCALE:

1/4"=1'0"

DRAWING NO.:

T3.P2G
RECORD
DRAWING

2.00 SF
ELEV. #14
STAFF/
PATIENT
ELEVATOR

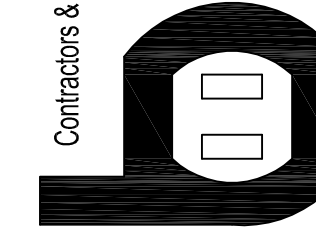
CAM-26

GENERAL SHEET NOTES

1. 12"W X 6"H CABLE RUNWAY
2. 24"W X 6"H CABLE RUNWAY
3. 18"W X 6"H CABLE RUNWAY
4. OUTLETS ARE TO BE FED VIA WALL FROM ABOVE CEILING SPACE. PROVIDE TWO (2) 1-1/4" CONDUITS FROM CABLE RUNWAY TO MILLWORK. TERMINATE CONDUITS AT 24" A.F.F. AND EXTEND ONTO MILLWORK USING NON-METALLIC SURFACE RACEWAYS WITH MINIMUM OF 1"x1" INTERNAL AREA TO EACH OUTLET.

- | | |
|---|--|
| 1. THE DRAWINGS ARE DIAGRAMMATIC ONLY AND MAY NOT SHOW ALL COMPONENTS, MATERIALS, OFFSETS, BENDS, ELBOWS AND OTHER SPECIFIC ELEMENTS THAT MAY BE REQUIRED FOR A COMPLETE INSTALLATION. CONTRACTOR SHALL BE RESPONSIBLE FOR PROVIDING ALL MATERIALS NEEDED FOR A COMPLETE AND FUNCTIONAL INSTALLATION. | 7. COMMON LOW VOLTAGE CABLE RUNWAY IS 24" W X 6" H HIGH. PROVIDE ALL MATERIALS AS NEEDED FOR A COMPLETE MANUFACTURER-APPROVED SYSTEM USING CABLE TRAY MANUFACTURERS MATERIALS AND PARTS WHEN AVAILABLE FROM THE SAME MANUFACTURER AS ITS INTRODUCED. REFER TO DRAWING 14.01 FOR DETAILS. ALL CHANGES IN DIRECTION AND INTERSECTIONS SHALL USE PRE-MANUFACTURED OR FIELD-INSTALLED SWEEPS AND TEES. ALL SWEEPS AND TEES SHALL MAINTAIN A 1 FOOT MINIMUM RADIUS IN CHANGES OF DIRECTION. |
| 2. ELECTRIC EQUIPMENT AND DEVICES (E.G. PBX, NETWORK SWITCHES) ARE SHOWN FOR REFERENCE ONLY. | 8. CABLE TRAY SHALL NOT PENETRATE WALLS. PROVIDE TRANSITION FROM CABLE TRAY TO LISTED FIRESTOP ASSEMBLIES IN ORDER TO PENETRATE FIRE-SMOKE WALLS. TRANSITION TO 42" CONDUITS/SWEEPS FOR UNWATED WALLS. PROVIDE SUFFICIENT CONDUITS/SWEEPS TO ACCOMMODATE 100% VISUAL CABLE TRAY LOAD AT 50% VISUAL CONDUIT FILL. |
| 3. REFER TO ARCHITECTURAL DETAIL PANELS FOR PAIN PATIENT ROOM DEVICE LOCATIONS. REFER TO ARCHITECTURAL DETAILS FOR OVERCOUNTER WORK HEIGHTS. REFER TO ARCHITECTURAL DETAILS FOR WALL-MOUNT WORK HEIGHTS. | 9. REFER TO ELECTRICAL DRAWINGS & SPECIFICATIONS FOR SHARED FLOOR BOXES & LOW VOLTAGE CONDUIT. |
| 4. HORIZONTAL DATA/VOICE CABLE SHALL TERMINATE IN THE TECHNOLOGY ROOM ON THE SAME FLOOR AS THE WORK AREA OUTLETS. | 10. PROVIDE BRACING TO MEET OSH-PPE SEISMIC REQUIREMENTS. REFER TO SHEET 7.4.02 FOR MORE INFORMATION. |
| 5. WORK AREA CABLE SHALL CONSIST OF SINGLE PLEASURE REDUCING RINGS INSTALLED ON OVERSIZE DOUBLE GANG BACKBOXES, UNLESS OTHERWISE NOTED. | 11. PROVIDE ALL OUTLET CONDUITS FROM WORK AREA OUTLETS, DEVICES OR PULL BOXES TO NEAREST CABLE TRAY. |
| 6. TOXIC CABLES SHALL BE COILED IN THE RESPECTIVE TECHNOLOGY ROOMS WITH A 20' SERVICE LOOP PRIOR TO TERMINATIONS. COILS SHALL BE SECURED TO THE INDIVIDUAL WALL FIELD FOR A/C CONTRACTOR. | 12. INSTALL CABLE TRAY @ 8" ABOVE CEILING. |

Bernelectric Corp.
Contractors & Engineers



#C10-#85046
650 OPPER ST.
(760) 746-1003
EAV (760) 746-4610

PROJECT: CHILDREN'S HOSPITAL
OF ORANGE COUNTY - TOWER II

ADDRESS: 455 South Main Street
Orange, CA 92868-3874
W.O. NO.: 12684

PROPRIETARY STATEMENT

THESE DRAWINGS/DOCUMENTS HEREBY ATTACHED ARE THE PROPERTY OF BERGELECTRIC CORPORATION. ANY REUSE OR REPRODUCTION OF THESE DOCUMENTS WITHOUT WRITTEN PERMISSION OF BERGELECTRIC CORPORATION IS STRICTLY FORBIDDEN. ALL RIGHTS RESERVED.

DRAWN BY:

J.RAMIRE.

DESIGN SUPERVISOR

INSTALL SUPERVISOR

Scott Adams
Tel Data Systems
Bergelectric Corporation
650 Opper Street
Escondido, CA 92029

REVISION

05-30-12 RECORD DRAWINGS

SHEET TITLE

TELECOM
FLOOR PLAN
LEVEL P2
AREA-H

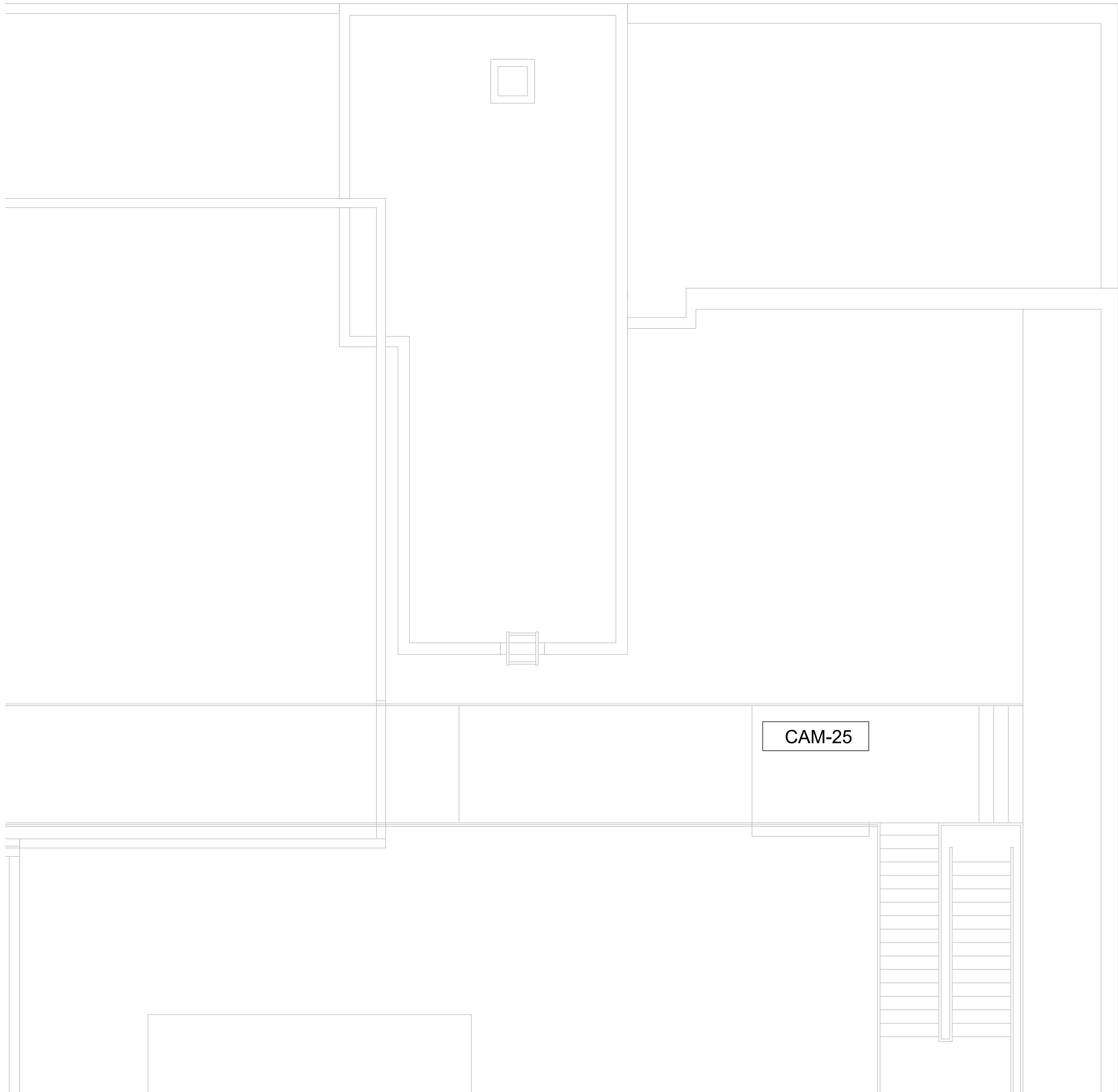
SCALE:

$$1/4" = 1'0"$$

DRAWING NO. :

T3.P2H
RECORD
DRAWING

T3 LEVEL P2 - TELECOM PLAN - AREA H
1/4" = 1'-0"



CAM-25

○ SHEET KEYNOTES

- 12"W X 6"H CABLE RUNWAY
- 24"W X 6"H CABLE RUNWAY
- 18"W X 6"H CABLE RUNWAY
- OUTLETS ARE TO BE FED VIA WALL FROM ABOVE CEILING SPACE. PROVIDE TWO (2) 1-1/4" CONDUITS FROM CABLE RUNWAY TO MILLWORK. TERMINATE CONDUITS AT 24" A.F.F. AND EXTEND ONTO MILLWORK USING NON-METALLIC SURFACE RACEWAYS WITH MINIMUM OF 1"x1" INTERNAL AREA TO EACH OUTLET.

GENERAL SHEET NOTES

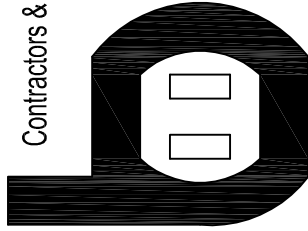
- THE DRAWINGS ARE DIAGRAMMATIC ONLY AND MAY NOT SHOW ALL COMPONENTS, MATERIALS, OFFSETS, BENDS, ELBOWS AND OTHER SPECIFIC ELEMENTS THAT MAY BE REQUIRED FOR A COMPLETE INSTALLATION. THE CONTRACTOR SHALL BE RESPONSIBLE FOR PROVIDING ALL MATERIALS NEEDED FOR A COMPLETE AND FUNCTIONAL INSTALLATION.
- ELECTRIC EQUIPMENT AND DEVICES (E.G. PBX, NETWORK SWITCHES) ARE SHOWN FOR REFERENCE ONLY.
- REFER TO ARCHITECTURAL DETAIL PLANS FOR FINAL PATIENT ROOM DEVICE LOCATIONS. REFER TO ARCHITECTURAL DETAILS FOR OVERCOUNTER WAO HEIGHTS. REFER TO ARCHITECTURAL DETAILS FOR WALL-MOUNT WAO HEIGHTS.
- HORIZONTAL DATA/VOICE/VIDEO CABLE SHALL TERMINATE IN THE TECHNOLOGY ROOM ON THE SAME FLOOR AS THE WORK AREA OUTLETS.
- WORK AREA OUTLETS SHALL CONSIST OF SINGLE PLASTER REDUCING RINGS INSTALLED ON OVERSIZE DOUBLE GANG BACKBOXES, UNLESS OTHERWISE NOTED.
- TV COAX CABLES SHALL BE COILED IN THE RESPECTIVE TECHNOLOGY ROOMS WITH A 20' SERVICE LOOP PRIOR TO TERMINATIONS. COILS SHALL BE SECURED TO THE AUDIOVISUAL WALL FIELD FOR AV CONTRACTOR.
- COMMON LOW VOLTAGE CABLE RUNWAY IS 24" W X 6" HIGH. PROVIDE ALL MATERIALS AS NEEDED FOR A COMPLETE, MANUFACTURER-APPROVED SYSTEM USING CABLE TRAY MANUFACTURERS MATERIALS AND PARTS WHEN AVAILABLE FROM THE MANUFACTURER AND AS INTENDED. REFER TO DRAWING T4.01 FOR DETAILS. ALL CHANGES IN DIRECTION AND INTERSECTIONS SHALL USE PRE-MANUFACTURED OR FIELD-INSTALLED SWEEPS AND TEES. ALL SWEEPS AND TEES SHALL MAINTAIN A 1 FOOT MINIMUM RADIUS IN CHANGES OF DIRECTION.
- CABLE TRAY SHALL NOT PENETRATE WALLS. PROVIDE TRANSITION FROM CABLE TRAY TO LISTED FIRESTOP ASSEMBLIES IN ORDER TO PENETRATE FIRE/SMOKE WALLS. TRANSITION TO 4" CONDUITS/SLEEVES FOR NON-RATED WALLS. PROVIDE SUFFICIENT CONDUITS/SLEEVES TO ACCOMMODATE 100% VISUAL CABLE TRAY LOAD AT 50% VISUAL CONDUIT FILL.
- REFER TO ELECTRICAL DRAWINGS & SPECIFICATIONS FOR SHARED FLOOR BOXES & LOW VOLTAGE CONDUIT.
- PROVIDE BRACING TO MEET OSHPD SEISMIC REQUIREMENTS. REFER TO SHEET T4.02 FOR MORE INFORMATION.
- PROVIDE ALL OUTLET CONDUITS FROM WORK AREA OUTLETS, DEVICES OR PULL BOXES TO NEAREST CABLE TRAY.
- INSTALL CABLE TRAY @ 6" ABOVE CEILING.

T3

LEVEL P2 - TELECOM PLAN - AREA M

1/4" = 1'-0"

Bergelectric Corp.
Contractors & Engineers



HC10-485048
650 UPPER ST.
ESCONDIDO, CA 92029
(760) 745-1033
FAX (760) 745-4619

PROJECT: **CHILDREN'S HOSPITAL
OF ORANGE COUNTY - TOWER II**

ADDRESS: **455 South Main Street
Orange, CA 92668-3874**

W.O. NO.: **12684**

PROPRIETARY STATEMENT
THESE DRAWING DOCUMENTS HEREON ATTACHED ARE THE PROPERTY OF BERGELECTRIC CORPORATION ANY REUSE OR REPRODUCTION OF THESE DOCUMENTS WITHOUT WRITTEN PERMISSION OF BERGELECTRIC CORPORATION IS STRICTLY FORBIDDEN. ALL RIGHTS RESERVED.

DRAWN BY:
J.RAMIREZ

DESIGN SUPERVISOR:

INSTALL SUPERVISOR:

Scott Adams
Tel Data Systems
Bergelectric Corporation
650 Upper Street
Escondido, CA 92029

REVISION:

05-30-12 RECORD DRAWINGS

SHEET TITLE:

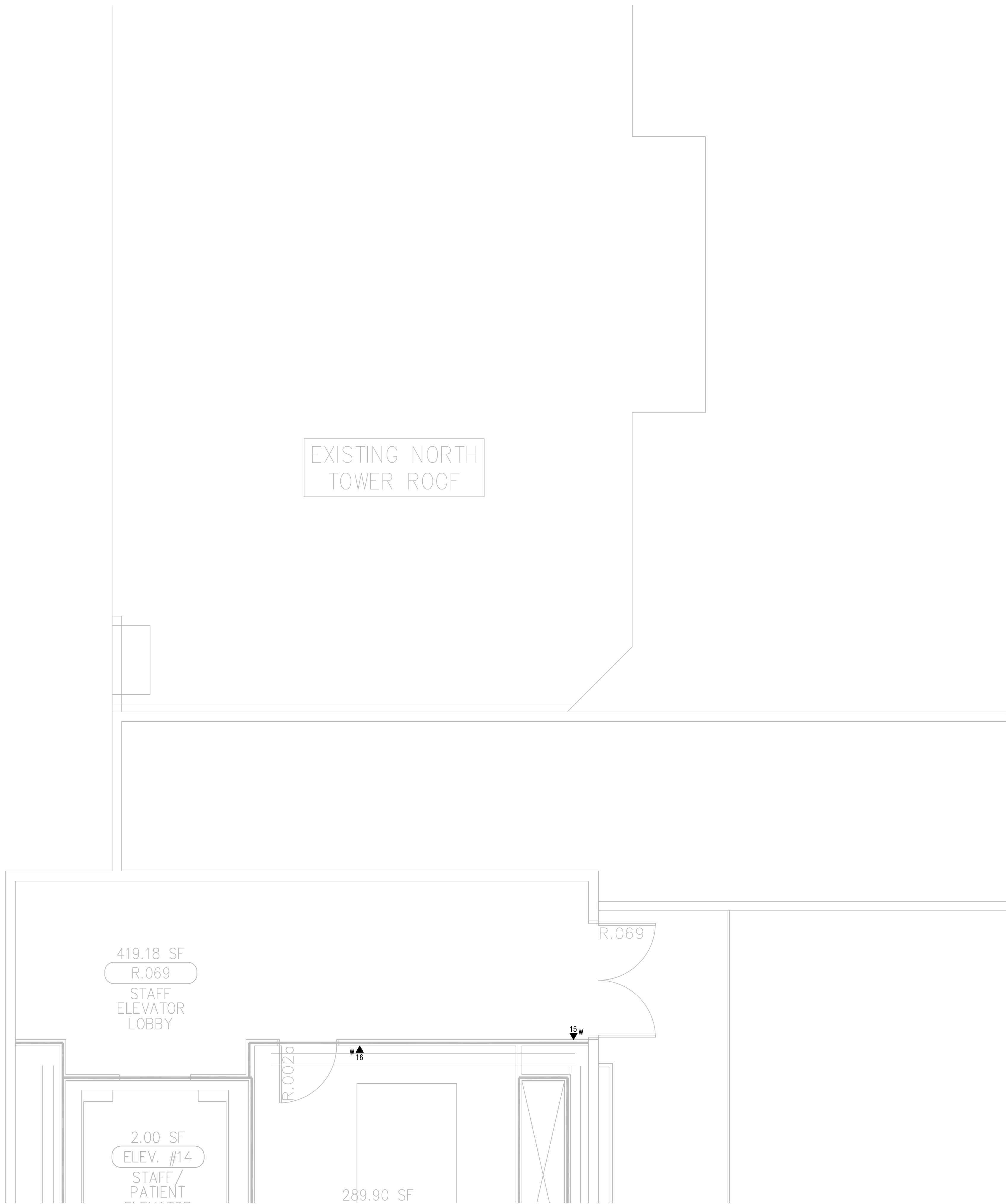
TELECOM
FLOOR PLAN
LEVEL P2
AREA-M

SCALE:

1/4"=1'0"

DRAWING NO.:

T3.P2M
RECORD
DRAWING



○ SHEET KEYNOTES

- 12"W X 6"H CABLE RUNWAY
- 24"W X 6"H CABLE RUNWAY
- 18"W X 6"H CABLE RUNWAY
- OUTLETS ARE TO BE FED VIA WALL FROM ABOVE CEILING SPACE. PROVIDE TWO (2) 1-1/4" CONDUITS FROM CABLE RUNWAY TO MILLWORK. TERMINATE CONDUITS AT 24" A.F.F. AND EXTEND ONTO MILLWORK USING NON-METALLIC SURFACE RACEWAYS WITH MINIMUM OF 1"x1" INTERNAL AREA TO EACH OUTLET.

GENERAL SHEET NOTES

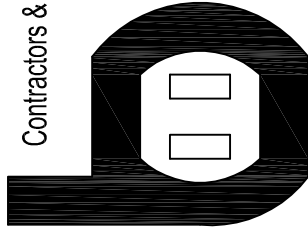
- THE DRAWINGS ARE DIAGRAMMATIC ONLY AND MAY NOT SHOW ALL COMPONENTS, MATERIALS, OFFSETS, BENDS, ELBOWS AND OTHER SPECIFIC ELEMENTS THAT MAY BE REQUIRED FOR A COMPLETE INSTALLATION. THE CONTRACTOR SHALL BE RESPONSIBLE FOR PROVIDING ALL MATERIALS NEEDED FOR A COMPLETE AND FUNCTIONAL INSTALLATION.
- ELECTRIC EQUIPMENT AND DEVICES (E.G. PBX, NETWORK SWITCHES) ARE SHOWN FOR REFERENCE ONLY.
- REFER TO ARCHITECTURAL DETAIL PLANS FOR FINAL PATIENT ROOM DEVICE LOCATIONS. REFER TO ARCHITECTURAL DETAILS FOR OVERCOUNTER WAO HEIGHTS. REFER TO ARCHITECTURAL DETAILS FOR WALL-MOUNT WAO HEIGHTS.
- HORIZONTAL DATA/VOICE/VIDEO CABLE SHALL TERMINATE IN THE TECHNOLOGY ROOM ON THE SAME FLOOR AS THE WORK AREA OUTLETS.
- WORK AREA OUTLETS SHALL CONSIST OF SINGLE PLASTER REDUCING RINGS INSTALLED ON OVERSIZE DOUBLE GANG BACKBOXES, UNLESS OTHERWISE NOTED.
- TV COAX CABLES SHALL BE COILED IN THE RESPECTIVE TECHNOLOGY ROOMS WITH A 20' SERVICE LOOP PRIOR TO TERMINATIONS. COILS SHALL BE SECURED TO THE AUDIOVISUAL WALL FIELD FOR AV CONTRACTOR.
- COMMON LOW VOLTAGE CABLE RUNWAY IS 24" W X 6" HIGH. PROVIDE ALL MATERIALS AS NEEDED FOR A COMPLETE, MANUFACTURER-APPROVED SYSTEM USING CABLE TRAY MANUFACTURERS MATERIALS AND PARTS WHEN AVAILABLE FROM THE MANUFACTURER AND AS INTENDED. REFER TO DRAWING T4.01 FOR DETAILS. ALL CHANGES IN DIRECTION AND INTERSECTIONS SHALL USE PRE-MANUFACTURED OR FIELD-INSTALLED SWEEPS AND TEES. ALL SWEEPS AND TEES SHALL MAINTAIN A 1 FOOT MINIMUM RADIUS IN CHANGES OF DIRECTION.
- CABLE TRAY SHALL NOT PENETRATE WALLS. PROVIDE TRANSITION FROM CABLE TRAY TO LISTED FIRESTOP ASSEMBLIES IN ORDER TO PENETRATE FIRE/SMOKE WALLS. TRANSITION TO 4" CONDUITS/SLEEVES FOR NON-RATED WALLS. PROVIDE SUFFICIENT CONDUITS/SLEEVES TO ACCOMMODATE 100% VISUAL CABLE TRAY LOAD AT 50% VISUAL CONDUIT FILL.
- REFER TO ELECTRICAL DRAWINGS & SPECIFICATIONS FOR SHARED FLOOR BOXES & LOW VOLTAGE CONDUIT.
- PROVIDE BRACING TO MEET OSHPD SEISMIC REQUIREMENTS. REFER TO SHEET T4.02 FOR MORE INFORMATION.
- PROVIDE ALL OUTLET CONDUITS FROM WORK AREA OUTLETS, DEVICES OR PULL BOXES TO NEAREST CABLE TRAY.
- INSTALL CABLE TRAY @ 6" ABOVE CEILING.

T3

LEVEL P2 - TELECOM PLAN - AREA P

1/4" = 1'-0"

Bergelectric Corp.
Contractors & Engineers



#C10-485048
650 UPPER ST.
ESCONDIDO, CA 92029

(760) 745-1033
FAX (760) 745-4619

PROJECT: **CHILDREN'S HOSPITAL
OF ORANGE COUNTY - TOWER II**

ADDRESS: **455 South Main Street
Orange, CA 92868-3874**

W.O. NO.: **12684**

PROPRIETARY STATEMENT
THESE DRAWING DOCUMENTS HEREON ATTACHED ARE THE PROPERTY OF BERGELECTRIC CORPORATION ANY REUSE OR REPRODUCTION OF THESE DOCUMENTS WITHOUT WRITTEN PERMISSION OF BERGELECTRIC CORPORATION IS STRICTLY FORBIDDEN. ALL RIGHTS RESERVED.

DRAWN BY:
J.RAMIREZ

DESIGN SUPERVISOR:

INSTALL SUPERVISOR:

**Scott Adams
Tel Data Systems
Bergelectric Corporation
650 Upper Street
Escondido, CA 92029**

REVISION:
05-30-12 RECORD DRAWINGS

SHEET TITLE:

**TELECOM
FLOOR PLAN
LEVEL P2
AREA-P**

SCALE:
1/4"=1'0"

DRAWING NO. :

**T3.P2P
RECORD
DRAWING**