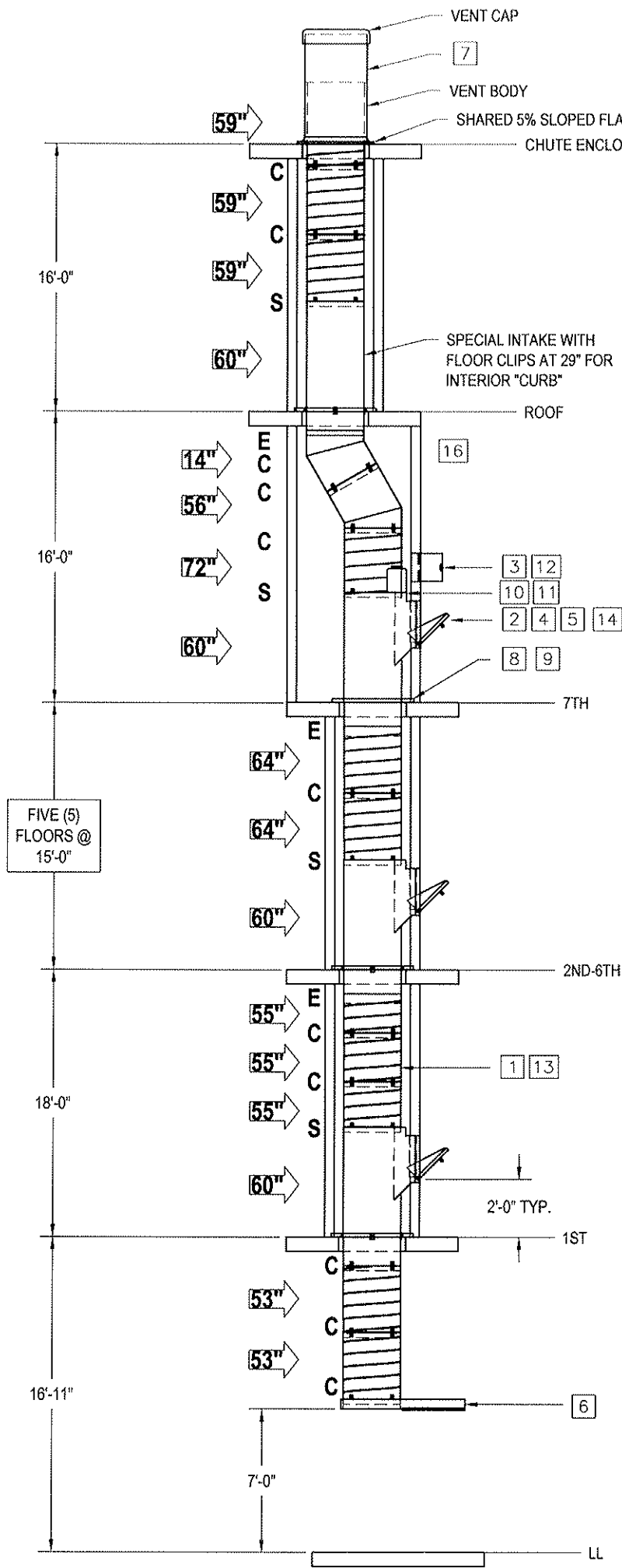
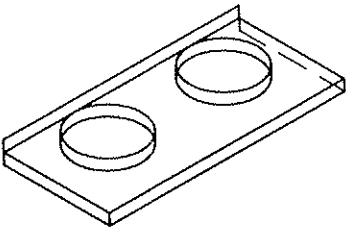


250° TEMPERATURE
RISE DOORS



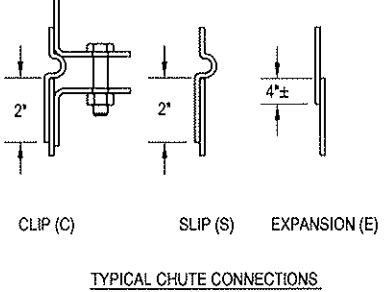
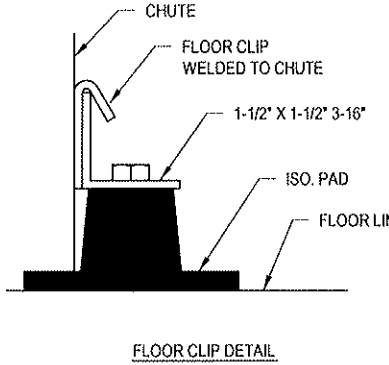
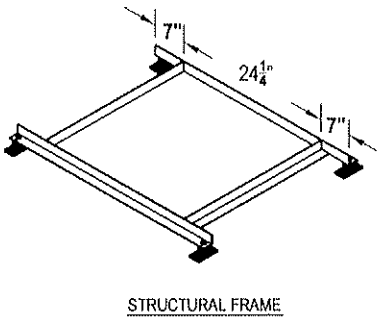
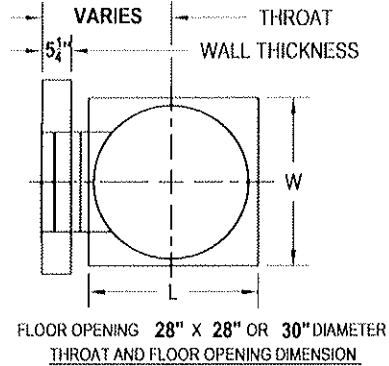
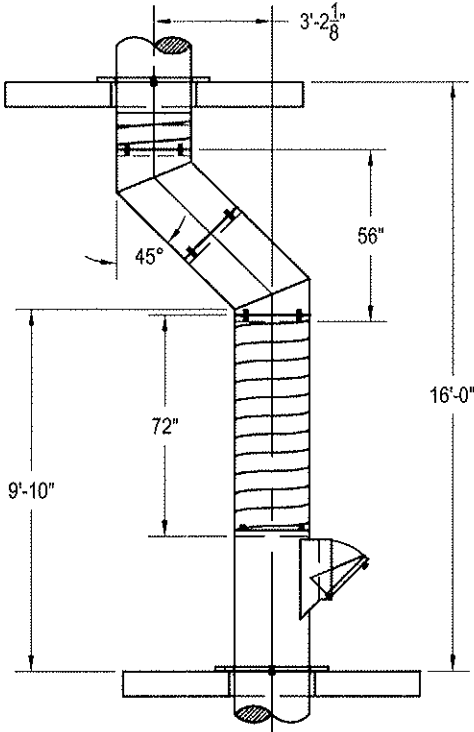
THROAT DIMENSIONS:
1ST: 23-1/4"
2ND-7TH: 20-1/4"

CONFIRM:
FLOOR HEIGHT
WALL THICKNESS
THROAT LENGTH
FLOOR SUPPORT
DOOR SIZE
DISCHARGE HEIGHT



FLASHING DETAIL:

SHARED FLASHING - 87-1/2" X 42" X 4" (3)
SIDES DOWN, (1) SIDE UP - 5% PITCH
DOWN - SEE SEPARATE DRAWING FOR
ADDITIONAL DETAIL



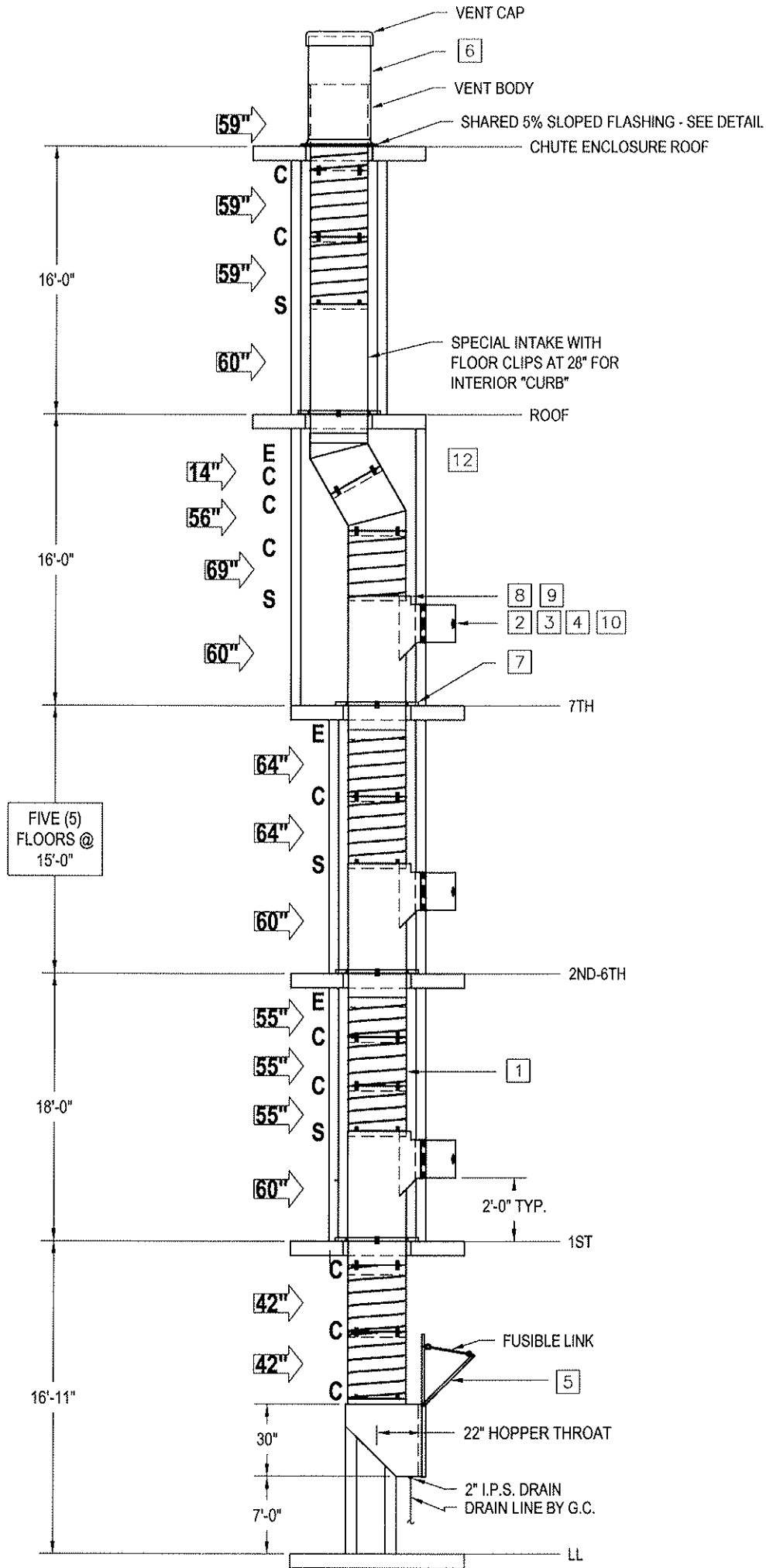
	QTY/ CHUTE	MATERIAL LISTING			TOTAL
		DESCRIPTION			
1	1	TRASH CHUTE 24" DIA. FABRICATED OF 16 GA ALUMINIZED STEEL LINEN CHUTE DIA. FABRICATED OF GA STEEL			1
2	7	INTAKE DOOR 15" WIDE X 18" HIGH BOTTOM HINGED HAND OPERATED, SILENT, SELF-CLOSING AND LATCHING, STAINLESS U.L. 1- 1/2 HR. "B" LABEL, 250° MAX TEMPERATURE RISE WITH CYLINDER LOCK KEYED ALIKE WITH INTERLOCKS.			7
		INTAKE DOOR WIDE X HIGH SIDE HINGED HAND OPERATED, STAINLESS STEEL PIANO HINGE ON HAND SIDE, SILENT, SELF-CLOSING AND LATCHING, STAINLESS U.L. 1-1/2 HR "B" LABEL, WITH CYL. LOCK KEYED ALIKE.			
3	1	ACCESS DOOR 15" WIDE X 15" HIGH SIDE HINGED HAND OPERATED, STAINLESS STEEL PIANO HINGE ON RIGHT HAND SIDE, STAINLESS STEEL U.L. 1- 1/2 HR. "B" LABEL, 250° MAX TEMPERATURE RISE, WITH CYLINDER LOCK KEYED ALIKE.			1
		THRU WALL DOOR WIDE X HIGH HINGED SELF-CLOSING AND LATCHING, STAINLESS STEEL PIANO HINGE ON HAND SIDE, SILENT, STAINLESS STEEL U.L. 1-1/2 HR. "B" LABEL, WITH BOTTOM SLEEVE PROJECTING 3" BEYOND BACK OF WALL. READY FOR INSTALLATION BY MASON OR DRYWALL CONTRACTOR.			
4	7	ELECTRIC INTERLOCKS 120 V 60 HZ PROVIDED SO THAT ONLY ONE INTAKE DOOR CAN BE OPENED AT A TIME, WITH ILLUMINATED IN-USE LIGHT, PUSH BUTTON, & ACCESS DOOR.			7
		BACK-DRAFT BAFFLES <input type="checkbox"/> 1" FLEXIBLE RUBBER <input type="checkbox"/>			
5	7	STAINLESS STEEL DOOR FRAME TRIM (OPTIONAL) 20 GA STAINLESS STEEL MOLDING SCREW-FASTENED TO FRAME. <input checked="" type="checkbox"/> EMBOSSED RUBBISH			7
6	1	DISCHARGE DOOR CENTURY TYPE D-HS HORIZONTAL ROLLING DOOR, 165° F. FUSIBLE LINK HOLD OPEN, INSULATED "B" LABEL CONSTRUCTION.			1
		DISCHARGE DOOR CENTURY TYPE D-TH WIDE X HIGH TOP HINGED STAINLESS STEEL DOOR, U.L. 1- 1/2 HR "B" LABEL WITH 2" I.P.S. FLOOR DRAIN FOR CONNECTION BY OTHERS.			
7	1	VENT CENTURY CHUTE TYPE G 24" DIA. X 48" HIGH 16 GA ALUMINUM WITH COMBINATION BIRD SCREEN/SPARK ARRESTOR.			1
		VENT DIA. X HIGH GALVANIZED, WITH RAIN CAP, ROOF JACK DIA. VENT PIPE AND TOP CAP ON TOP OF CHUTE STACK.			
8	8	CHUTE SUPPORT 1-1/2 X 1-1/2 X 1/8 ANGLE STRUCTURAL FRAME TO SUPPORT EACH FLOOR OF CHUTE, 4 CLIPS WELDED TO CHUTE TUBE, CONNECT WITH STRUCTURAL FRAME.			8
9	32	STRUCTURAL FRAME EQUIPPED WITH <input type="checkbox"/> GROMMETS <input type="checkbox"/> FLOOR CLOSURE PLATES <input type="checkbox"/> MASON TYPE N NEOPRENE MOUNT <input type="checkbox"/> 1/2" NEOPRENE ISOLATORS 3" X 3" <input checked="" type="checkbox"/> MASON ND PADS			0
10	1	FLUSHING SPRAY HEAD 3/4" I.P.S., FLUSHING SPRAY HEAD INSTALLED IN SPRAY HEAD CHAMBER ABOVE AND ON THE LEFT SIDE OF INTAKE DOORS, LOCATED ON 7TH FLOORS READY FOR CONNECTION BY PLUMBER.			1
11	4	SPRINKLERS 1/2" I.P.S. 165° FUSIBLE LINKED AUTOMATIC, INSTALLED IN SPRAY HEAD CHAMBER ABOVE AND ON THE RIGHT SIDE OF INTAKE DOOR, LOCATED ON 1ST, 3RD, 5TH, 7TH FLOORS, READY FOR CONNECTION BY PLUMBER.			4
		AUTOMATIC ON-OFF SPRINKLERS LOCATED ON FLOORS, SPRINKLER OPENS AT 165° F., RE-CLOSES AUTOMATICALLY.			
12	1	DISINFECTING AND SANITIZING UNIT PROVIDED AS SHOWN ON CHUTE ELEVATION, VACUUM BREAKER AND VALVE SUPPLIED BY OTHERS.			1
13	LOT	SOUND DEADENING <input checked="" type="checkbox"/> FACTORY SPRAY COAT OF SOUND DAMPENER (BLACK) <input type="checkbox"/> DAUBERT 3680 V-DAMP SOUND DAMPENER (WHITE)			LOT
14	7	DOOR INSTALLATION <input type="checkbox"/> MASONRY WALL WALL THICKNESS <input checked="" type="checkbox"/> DRYWALL 5-1/4" WALL THICKNESS <input type="checkbox"/> WALL THICKNESS			7
15	1	HEAT SENSOR, SMOKE DETECTOR AND MANUAL SWITCH FOR INTERLOCK SYSTEM.			1
16	1	DOUBLE OFFSET AND SPECIAL INTAKE IN VENT SECTION.			1

GENERAL NOTES
OPENINGS TO BE ACCESSIBLE AND FREE OF OBSTRUCTION PRIOR TO INSTALLATION.
PARTITIONS AROUND CHUTES TO BE ERECTED AFTER CHUTES ARE INSTALLED.
DRYWALL CAVITY SHAFTWALL TO BE ERECTED IN ACCORDANCE WITH INSTALLATION DRAWING NO C-44100.
SEE SHEET OF
WALLS TO BE ERECTED SO INTAKE DOOR FRAMES ARE SQUARE & FLUSH WITH FINISH WALL.
STRAIGHT SECTIONS MAY BE FINISHED MECHANICALLY LOCK SEAMED OR CONTINUOUS BUTT WELDED.

Century CHUTE & SUPPLY (815) 467-7921
105 INDUSTRIAL DR. MINOOKA, IL. 60447

B	PER RELEASE DOCS	11-17-10	CHILDRENS HOSPITAL ORANGE CO - TRASH	SCALE	NONE	DRAWN BY	DAVE
A	ADD VENT OFFSET	11-05-10	ORANGE, CA	DATE	11-17-09	CHECKED BY	
	PDF SENT VIA EMAIL	11-17-09		W.O. #	16050T	DWG. #	1 OF 1
REV	DESCRIPTION	DATE	CHUTE SYSTEMS				

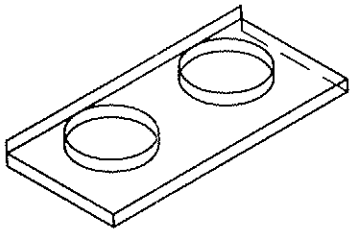
250° TEMPERATURE
RISE DOORS



THROAT DIMENSIONS:
1ST: 23-1/4"
2ND-7TH: 20-1/4"

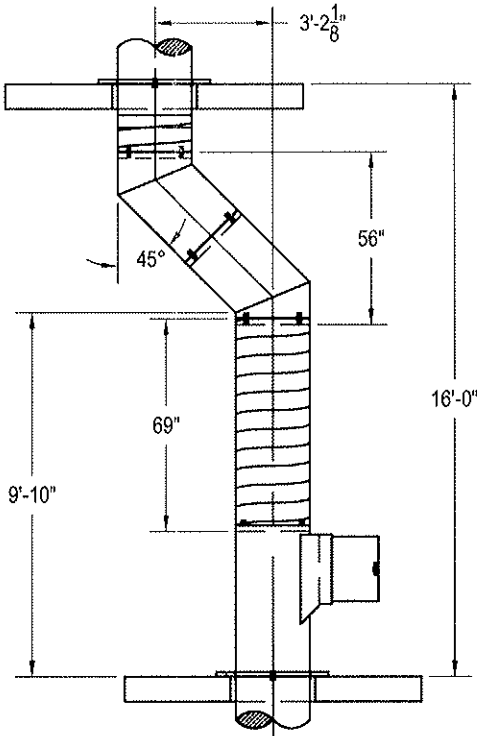
CONFIRM:

FLOOR HEIGHT
WALL THICKNESS
THROAT LENGTH
FLOOR SUPPORT
HOPPER THROAT LENGTH
DOOR SIZE AND SWING



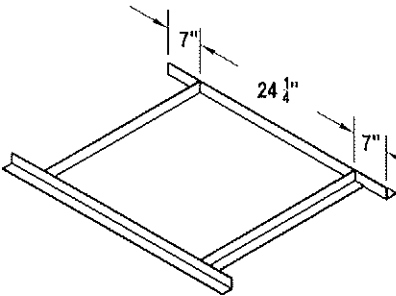
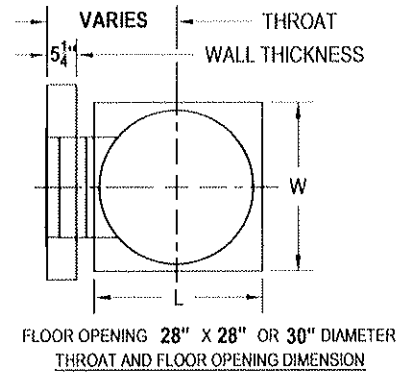
FLASHING DETAIL:

SHARED FLASHING - 87-1/2" X 42" X 4" (3)
SIDES DOWN, (1) SIDE UP - 5% PITCH
DOWN - SEE SEPARATE DRAWING FOR
ADDITIONAL DETAIL

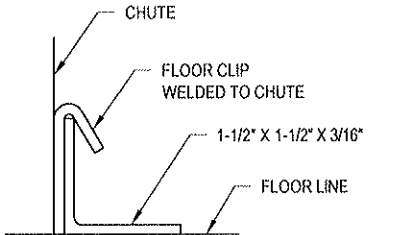


VENT OFFSET:

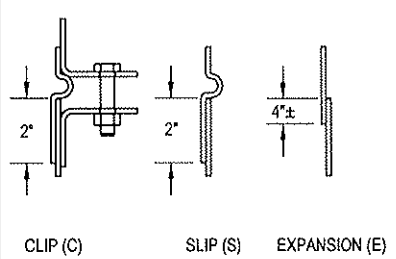
56" VERTICAL, 45° VENT OFFSET
WITH SPIRAL INSTALLED BELOW



STRUCTURAL FRAME



FLOOR CLIP DETAIL



TYPICAL CHUTE CONNECTIONS

ITEM		QTY		MATERIAL LISTING				TOTAL
CHUTE				DESCRIPTION				
1	1	TRASH CHUTE	24"	DIA.	FABRICATED OF	16	GA ALUMINIZED STEEL	1
		LINEN CHUTE	24"	DIA.	FABRICATED OF	16	GA ALUMINIZED STEEL	1
		INTAKE DOOR		WIDE X	HIGH	BOTTOM HINGED	OPERATED, SILENT, SELF-CLOSING AND LATCHING, STAINLESS U.L. 1-1/2 HR. 'B' LABEL, WITH CYLINDER LOCK KEYED ALIKE.	
2	7	INTAKE DOOR	21"	WIDE X	21"	HIGH	SIDE HINGED HAND OPERATED, STAINLESS STEEL PIANO HINGE ON RIGHT HAND SIDE, SILENT, SELF-CLOSING AND LATCHING, STAINLESS U.L. 1-1/2 HR 'B' LABEL, 250° MAX TEMPERATURE RISE, WITH CYL. LOCK KEYED ALIKE WITH INTERLOCKS.	7
		ACCESS DOOR		WIDE X	HIGH	SIDE HINGED HAND OPERATED, STAINLESS STEEL PIANO HINGE ON	HAND SIDE, STAINLESS STEEL U.L. 1-1/2 HR. 'B' LABEL, WITH CYLINDER LOCK KEYED ALIKE.	
		THRU WALL DOOR		WIDE X	HIGH	HINGED SELF-CLOSING AND LATCHING, STAINLESS STEEL PIANO HINGE ON	HAND SIDE, SILENT, STAINLESS STEEL U.L. 1-1/2 HR. 'B' LABEL, WITH BOTTOM SLEEVE PROJECTING 3" BEYOND BACK OF WALL. READY FOR INSTALLATION BY MASON OR DRYWALL CONTRACTOR.	
3	7	ELECTRIC INTERLOCKS	120 V 60 HZ	PROVIDED SO THAT ONLY ONE INTAKE DOOR CAN BE OPENED AT A TIME, WITH ILLUMINATED IN-USE LIGHT, PUSH BUTTON, & ACCESS DOOR.				7
		BACK-DRAFT BAFFLES						
4	7	STAINLESS STEEL DOOR FRAME TRIM (OPTIONAL)	20 GA	STAINLESS STEEL MOLDING				7
		SCREW-FASTENED TO FRAME.						
		DISCHARGE DOOR CENTURY TYPE D-HS						
		HORIZONTAL ROLLING DOOR, 165° F. FUSIBLE LINK HOLD OPEN, INSULATED 'B' LABEL CONSTRUCTION.						
5	1	DISCHARGE DOOR CENTURY TYPE D-TH	24"	WIDE X	30"	HIGH	TOP HINGED STAINLESS STEEL DOOR, U.L. 1-1/2 HR 'B' LABEL, 250° MAX TEMPERATURE RISE WITH 2" I.P.S. FLOOR DRAIN FOR CONNECTION BY OTHERS.	1
6	1	VENT CENTURY CHUTE TYPE G	24"	DIA. X	48"	HIGH	16 GA ALUMINUM WITH COMBINATION BIRD SCREEN/SPARK ARRESTOR.	1
		VENT		DIA. X		HIGH	GALVANIZED, WITH RAIN CAP, ROOF JACK, DIA. VENT PIPE AND TOP CAP ON TOP OF CHUTE STACK.	
7	8	CHUTE SUPPORT	1-1/2" X 1-1/2" X 3/8"	ANGLE	STRUCTURAL FRAME TO SUPPORT EACH FLOOR OF CHUTE, 4 CLIPS WELDED TO CHUTE TUBE, CONNECT WITH STRUCTURAL FRAME.			8
		STRUCTURAL FRAME EQUIPPED WITH						
8	1	FLUSHING SPRAY HEAD	3/4" I.P.S.	FLUSHING SPRAY HEAD INSTALLED IN SPRAY HEAD CHAMBER ABOVE AND ON THE LEFT SIDE OF INTAKE DOORS, LOCATED ON 7TH				1
9	4	SPRINKLERS	1/2" I.P.S.	165° FUSIBLE LINKED AUTOMATIC, INSTALLED IN SPRAY HEAD CHAMBER ABOVE AND ON THE RIGHT SIDE OF INTAKE DOOR, LOCATED ON 1ST, 3RD, 5TH, 7TH				4
		AUTOMATIC ON-OFF SPRINKLERS LOCATED ON FLOORS, SPRINKLER OPENS AT 165° F., RE-CLOSES AUTOMATICALLY.						
		DISINFECTING AND SANITIZING UNIT PROVIDED AS SHOWN ON CHUTE ELEVATION, VACUUM BREAKER AND VALVE SUPPLIED BY OTHERS.						
		SOUND DEADENING						
10	7	DOOR INSTALLATION						7
11	1	HEAT SENSOR, SMOKE DETECTOR AND MANUAL SWITCH FOR INTERLOCK SYSTEM.						1
12	1	DOUBLE OFFSET AND SPECIAL INTAKE IN VENT SECTION.						1

GENERAL NOTES

OPENINGS TO BE ACCESSIBLE AND FREE OF OBSTRUCTION PRIOR TO INSTALLATION.
PARTITIONS AROUND CHUTES TO BE ERECTED AFTER CHUTES ARE INSTALLED.
DRYWALL CAVITY SHAFTWALL TO BE ERECTED IN ACCORDANCE WITH INSTALLATION DRAWING NO C-44100.
SEE SHEET OF
WALLS TO BE ERECTED SO INTAKE DOOR FRAMES ARE SQUARE & FLUSH WITH FINISH WALL.
STRAIGHT SECTIONS MAY BE FINISHED MECHANICALLY LOCK SEAMED OR CONTINUOUS BUTT WELDED.

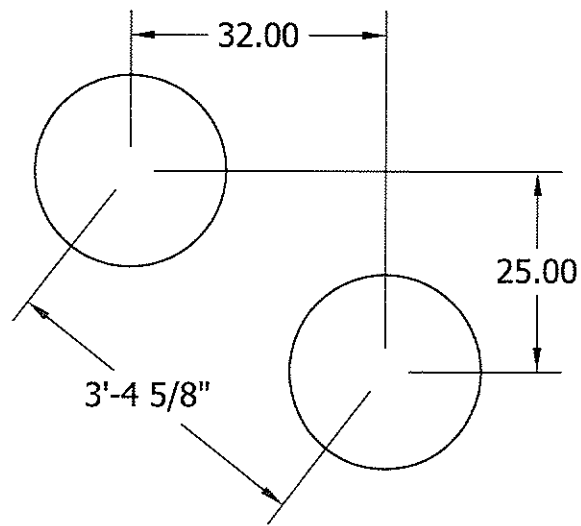
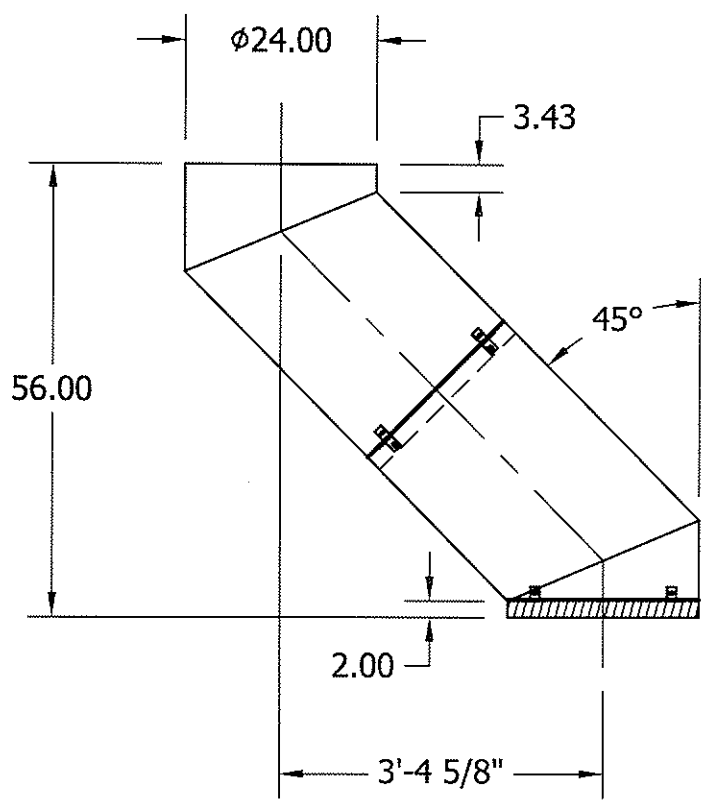
Century

CHUTE & SUPPLY (815) 467-7921

105 INDUSTRIAL DR.

MINOOKA, IL. 60447

B	PER RELEASE DOCS	11-17-10	CHILDRENS HOSPITAL ORANGE CO - LINEN	SCALE	NONE	DRAWN BY	DAVE
A	ADD VENT OFFSET	11-05-10	ORANGE, CA	DATE	11-17-09	CHECKED BY	
	PDF SENT VIA EMAIL	11-17-09		W.O.#	16050L	DWG.#	1 OF 1
REV	DESCRIPTION	DATE	CHUTE SYSTEMS				



ORIGINAL VENT OFFSET SUPPLIED WAS 56" TALL
NEW OFFSET AS SHOWN IS THE SAME OVERALL HEIGHT
TO FIT INTO EXISTING SPACE BASED ON 11/17/2010
RELEASE DIMENSIONS

MATERIAL: 24" CHUTE 16 GA A/S	<i>Century</i> CHUTE & SUPPLY 105 INDUSTRIAL DR. MINOOKA, IL. 60447		DWG BY: DAVE CHK'D BY:		NAME: CHILDREN'S HOSPITAL TRASH CHUTE VENT OFFSET	
			DATE: 07-25-11			
QUANTITY: 1 EACH	UNLESS OTHERWISE INDICATED, DIMENSIONS ARE IN INCHES AND TOLERANCES ARE AS FOLLOWS: XX= ± .015 XXX= ± .005 L= ±1/2° BREAK ALL SHARP EDGES PROPERTY OF CENTURY CHUTE DO NOT DUPLICATE WITHOUT PERMISSION		SHEET 1 OF 1			
SCALE: 1/2" = 1'-0"			REV 0	DRAWING # CCS-11-1201-0		A