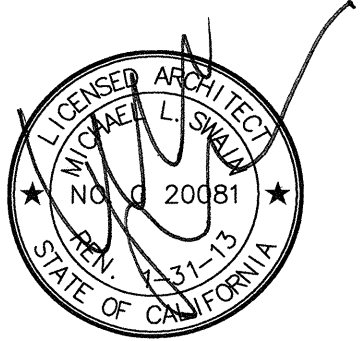


FKP Architects

ARCHITECT OF RECORD
Paul C. Gloriot



REVISIONS

03/01/11 CO #134

APPROVAL

Office of Statewide Health
Planning & Development (OSHPD)
REVIEWED IN ACCORDANCE WITH
THE REQUIREMENTS OF T24, CCR
APPROVED
JUL 08 2011
CHANGE ORDER # 134
INSTRUCTION BULLETIN
DEFERRED APPROVAL #
ADDENDUM

PROJECT NAME

CHILDREN'S HOSPITAL
OF ORANGE COUNTY

455 S. Main St.
Orange, CA 92668-3874

TOWER II

RECEIVED
July 12 2011
McCARTHY



PROJECT NUMBER

12011.00
Increment #7

OSHPD - PROJECT NUMBER

IL 072072-30

ISSUE

OSHPD PERMIT

DATE

01/27/2010

SCALE

DRAWING TITLE

ARCHITECTURAL
INFORMATION

DRAWING NUMBER

A0.1

Building Envelope Criteria:

Climate Zone: 8

Above Grade Window & Door Glazed Area:

	Vision Glass	Secondary Glass	Total Glass Area
North	4,458 S.F.	2,307 S.F.	6,765 S.F.
South	9,133 S.F.	7,973 S.F.	17,106 S.F.
West	4,254 S.F.	8,045 S.F.	12,299 S.F.
East	9,280 S.F.	14,193 S.F.	23,473 S.F.
Above Grade (Wall Area Other than Glass)	Project Total Above Grade (Wall Area)		
North	16,732 S.F.		23,497 S.F.
South	20,524 S.F.		37,830 S.F.
West	21,419 S.F.		35,609 S.F.
East	12,176 S.F.		33,718 S.F.

Roof surface: 76,849 S.F.

Moisture Control:

A. Horizontal surfaces below grade to be "Rubber Asphalt Sheet" waterproofing system.
B. Vertical surfaces below grade to be Composit Sheet" waterproofing system.

Building Envelope Design / Specification Requirements:

Above Grade Walls: R-13 (minimum)
Non Glazed Doors: 0.11 U - 1 factor - provided R-11 minimum
Window and Glass Doors: .40 shell; U = .77 - provide U = .31 - .33
Roof Assembly: R-11 (minimum)
Floor Over Unconditioned Space: R-4 (minimum)
Slab on Grade: R-0

E3 ENERGY CODE REVIEW

A. Calculations are indicated per floor on the life safety plans AC drawing series.
B. Travel distances indicated on life safety plans.

D3 MEANS OF EGRESS

A. GROSS BUILDING AREA

BASEMENT LEVEL TOTAL G.S.F.=	77,023 S.F.
INCREMENT #13	7,594 S.F.
INTERIOR BUILDOUT	64,429 S.F.
LEVEL 1 TOTAL G.S.F.=	70,048 S.F.
SHELL SPACE	6,653 S.F.
INTERIOR BUILDOUT	63,395 S.F.
LEVEL 2 TOTAL G.S.F.=	65,743 S.F.
SHELL SPACE	6,448 S.F.
OUTDOOR SPACE	6,471 S.F.
INTERIOR BUILDOUT	52,824 S.F.
LEVEL 3 TOTAL G.S.F.=	67,908 S.F.
SHELL SPACE	2,922 S.F.
INTERIOR BUILDOUT	64,986 S.F.
LEVEL 4 TOTAL G.S.F.=	55,610 S.F.
SHELL SPACE	956 S.F.
INTERIOR BUILDOUT	22,215 S.F.
LEVEL 5 TOTAL G.S.F.=	29,945 S.F.
SHELL SPACE	0 S.F.
INTERIOR BUILDOUT	29,945 S.F.
LEVEL 6 TOTAL G.S.F.=	29,333 S.F.
SHELL SPACE	23,709 S.F.
INTERIOR BUILDOUT	5,624 S.F.
LEVEL 7 TOTAL G.S.F.=	29,257 S.F.
SHELL SPACE	22,419 S.F.
INTERIOR BUILDOUT	6,838 S.F.
ROOF/LEVEL 8/PH1 G.S.F.=	29,130 S.F.
HELISTOP/PH2 G.S.F.=	7,397 S.F.
PH3 G.S.F.=	1,991 S.F.
TOTAL B.G.S.F.=	463,385 S.F.
(EXCLUDES COURTYARD AREAS)	

EXTERIOR ROOFTOP COURTYARD AREAS

LEVEL 2 EXTERIOR COURTYARD= 6,471 S.F.

B. See Sheet A0.2 for Code Summary and OSHPD Requirements.

The intent of the drawings and specifications is to reconstruct the hospital building in accordance with California Building Standards Code, Title 24, California Code of regulations. Should any condition develop not covered by the approved plans and specifications wherein the finished work not comply with Title 24, California Code of Regulations, a change order detailing and specifying the required work shall be submitted and approved by OSHPD before proceeding with the work.

Reference: CCR Title 24, Part 1, Section 7-125(b)(2)

Alcohol-based hand rubs classified as Class I or II liquids shall comply with 2007 CFC 3405.5 and 3406.5.1.

C3 PROJECT INFO

ROOF- Penthouse - ULF P725 - 1 1/2 hour
ROOF- Tower/ Pancake - ULF5701 - 2 hour

FLOOR- Tower/Pancake - ULF0916 - 2 hour

COLUMNS- Tower/Pancake - ULF0772 - 3 hour

EXTERIOR WALLS- Exterior walls (1hr to 4hr) - ULF0419 - with plaster exterior and insulation (non-bearing wall)
Exterior walls (2hr) - ULF0415 - between basements (non-bearing wall)

INTERIOR WALLS- Interior walls (1hr to 4hr) - ULF0419 - with insulation (non-bearing wall)

SHAFT WALLS- Shaft (1hr to 2hr) - ULF0438 or #U497 - with insulation

CHASE WALLS- Chase (1hr to 2hr) - ULF0420 - with insulation

B3 FIRE RESISTANT DESIGNS

*FVC - FIRE VALVE CABINET @ HORIZONTAL EXITS

*EC - FIRE EXTINGUISHER CABINET NO GREATER THAN 75 FEET TO NEAREST (MAX 150 FEET APART IN CORRIDOR);

EXIT - DISCHARGE POINT FROM FLOOR

200'-0" - DISTANCE BETWEEN EXIT STAIRS OR MAXIMUM EGRESS DISTANCE

A3 LIFE SAFETY PLAN LEGEND

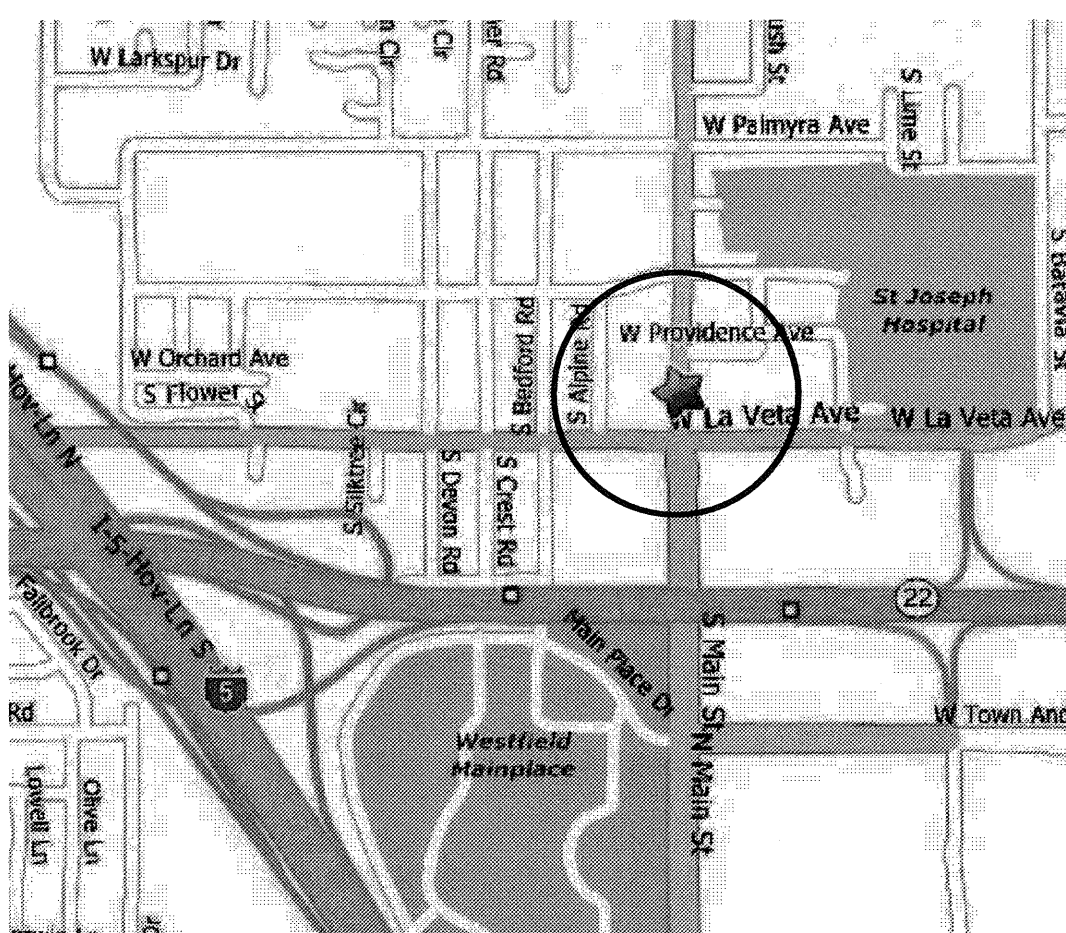
A1 OSHPD INCREMENT PACKAGES & CITY SUBMITTALS

E6	E5	E4	E3	E2	E1
D6	D5	D4	D3	D2	D1
C6	C5	C4	C3	C2	C1
B6	B5	B4	B3	B2	B1
A6	A5	A4	A3	A2	A1

THE COORDINATE REFERENCE REMAINS
CONSTANT THROUGHOUT EACH SHEET.

D5 DETAIL REFERENCE CODE

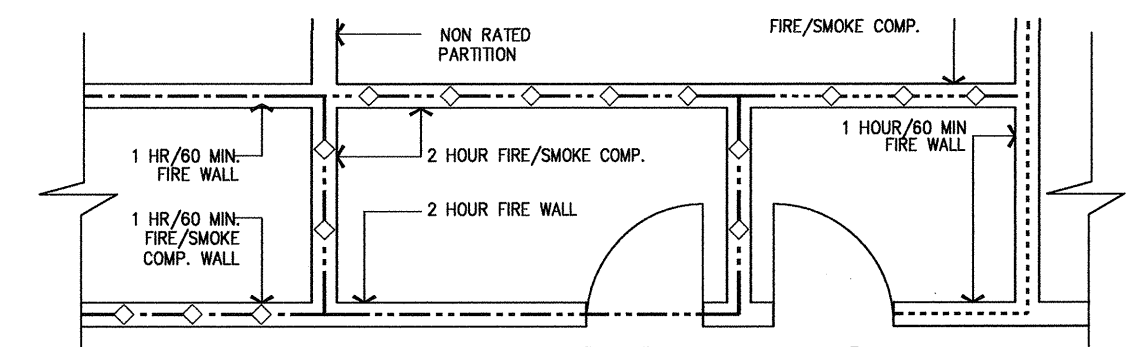
D4 PROJECT LOCATION



C5 AREA MAP

A1	SECTION/DETAIL REFERENCE
A2.3	DOOR TAG
10	WINDOW TAG
13	LIGHT TAG
CUT LINE	CUT LINE
CENTERLINE	CENTERLINE
A	COLUMN GRID (NEW)
4	COLUMN GRID (EXISTING)
2	PLAN DETAIL REFERENCE
A-13	ROOM NAME
1001	ROOM NUMBER/NAME
M1005	EQUIPMENT NUMBER
10/A3.1	EXTERIOR/ INTERIOR ELEVATION REFERENCE
15/A7.1	SECTION/DETAIL REFERENCE
601.0	FINISHED GRADE/ROOF ELEV.
3	NOTE TO SHEET REFERENCE
EQ8090	EQUIPMENT NOTE REFERENCE
4.35	PARTITION TYPE - SEE GENERAL NOTES TO PARTITION TYPES FOR ADDITIONAL INFORMATION
+	REFERENCE POINT
+	REVISION SYMBOL
---	MATCH LINE

A5 REFERENCE SYMBOLS



EXAMPLE - FIRE/SMOKE RATING

- TYPICAL CORRIDOR WALL [1 HOUR WALL/DOORS SMOKE-RATED/NON-RATED WINDOWS LIMITED IN SIZE(25% OF WALL)] CBC 407.3.
- ONE HOUR FIRE RATED WALL (OCCUPANCY SEPARATION) WITH 60 MIN. DOORS. CBC 508.
- ONE HOUR FIRE/SMOKE RATED WALL (OCCUPANCY SEPARATION) WITH 60 MIN. DOORS. CBC 702.
- TWO HOUR FIRE RATED WALL (SHAFT ENCLOSURE, OCCUPANCY SEPARATION & HORIZONTAL EXIT) WITH 90 MIN. DOORS. CBC 508, 707 & 1022.
- TWO HOUR FIRE/SMOKE RATED WALL (SHAFT ENCLOSURE/SMOKE COMPARTMENT) WITH 90 MIN. DOORS. CBC 404.4 & 707.
- 3 HOUR RATED WALL (OCCUPANCY SEPARATION) 180 MIN. DOORS. CBC 715.
- 3 HOUR FIRE/SMOKE RATED WALL (OCCUPANCY SEPARATION/SMOKE COMPARTMENT) 180 MIN. DOORS. CBC 404.4 & 715.
- 4 HOUR RATED WALL (OCCUPANCY SEPARATION) 180 MIN. DOORS.

C4 FIRE & SMOKE LEGEND

ACoustic MATERIAL
BLOCKING - CONTINUOUS
BLOCKING/SHIMS
BRICK
CONCRETE
CONCRETE MASONRY UNIT
FIBER CANT/COMP. FILLER
GLAZING - SMALL SCALE
GLAZING - LG. SCALE
GYPsum BOARD
INSULATION - BATT/BLANKET
INSULATION - RIGID OR SEMI-RIGID
INSULATION - FIRESAFING
INSULATING FILL/INSUL. CONC.
MARBLE / STONE
PLASTER ON METAL LATH
PLYWOOD
SHEATHING
STEEL - LG. SCALE
WOOD - FIN. GRADE & TRIM

A4 MATERIALS LEGEND