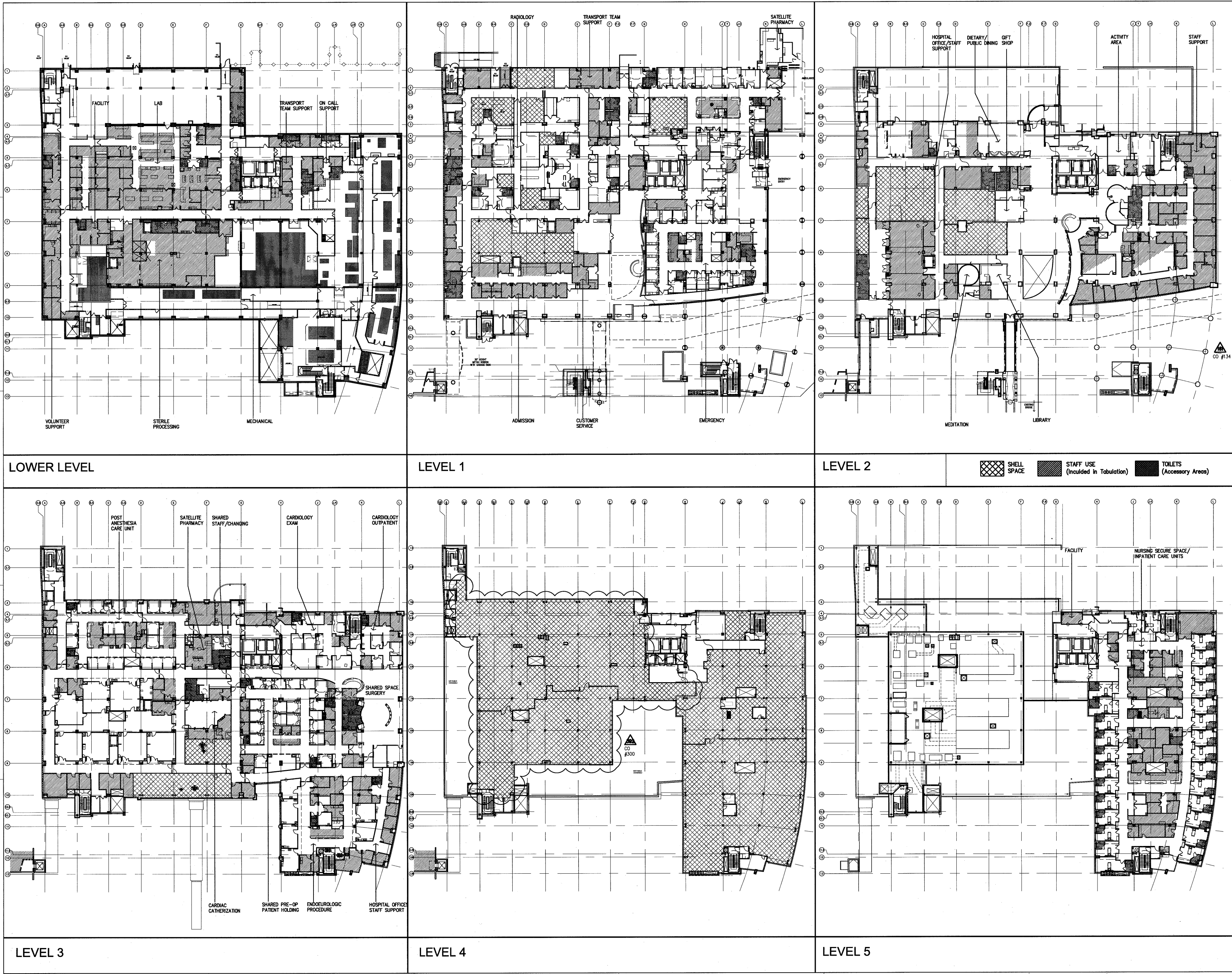


N:\0000\06102 CHOC TOWER 2 SHELL BUILDING\VP CONTRACTED PROJECTS\PROJECT INCREMENTS\INR\_007\_TENANT IMPROVEMENT\OSHPD PERMIT (CONSTRUCTION DOCUMENTS)\06002.dwg VALJA PLUMBING FIXTURE CALCULATIONS.dwg  
12/2/2011  
G:\0000\06102 CHOC TOWER 2 SHELL BUILDING\VP CONTRACTED PROJECTS\PROJECT INCREMENTS\INR\_007\_TENANT IMPROVEMENT\OSHPD PERMIT (CONSTRUCTION DOCUMENTS)\06002.dwg



**FKP Architects**

ARCHITECT OF RECORD  
Paul C. Glorid

CHANGES ON THESE DRAWINGS DO NOT CONSTITUTE A CHANGE ORDER. CHANGES TO BE MADE TO THESE DRAWINGS MUST BE MADE BY A CHANGE ORDER. CHANGES TO BE MADE TO THESE DRAWINGS MUST BE MADE BY A CHANGE ORDER.

REVISIONS

NO.	DATE	DESCRIPTION
1	03/01/11	CO #134
2	02/13/11	CO #300

APPROVAL

Office of Statewide Health Planning & Development  
REVIEWED IN ACCORDANCE WITH THE REQUIREMENTS OF TMA, CCR

CHANGE ORDER # 202  
INSTRUCTION BULLETIN  
DEFERRED APPROVAL  
DO NOT USE

PROJECT NAME: TAD 2012-02398  
CHILDREN'S HOSPITAL OF ORANGE COUNTY  
455 S. Main St.  
Orange, CA 92668-3874

TOWER II

**CHOC**  
HOSPITAL

PROJECT NUMBER  
12011.00  
Increment #7

OSHPD - PROJECT NUMBER  
IL 072072-30

ISSUE  
OSHPD PERMIT

DATE  
01/27/2010

SCALE  
1/32" = 1'-0"

DRAWING TITLE  
PLUMBING FIXTURE CALCULATIONS

DRAWING NUMBER  
A0.3A