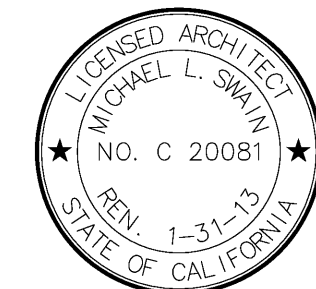


FKP Architects

ARCHITECT OF RECORD

Paul C. Gloriot

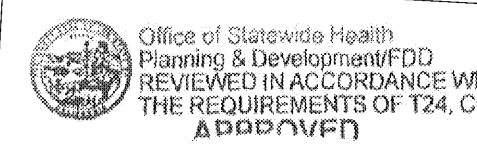


Changes on these drawings do not consist of material alterations to approved drawings and do not require a change order.  
OSHPD review ACO  
OSHPD review FLSO  
OSHPD review DSE

REVISIONS

1/8"	03/01/11	CO #134
1/8"	03/15/12	ASI #188

APPROVAL



PROJECT NAME

CHILDREN'S HOSPITAL  
OF ORANGE COUNTY

455 S. Main St.  
Orange, CA 92668-3874

TOWER II



PROJECT NUMBER

12011.00  
Increment #7

OSHPD - PROJECT NUMBER  
IL 072072-30

ISSUE  
OSHPD PERMIT

DATE  
01/27/2010

SCALE

3/8" = 1'-0"

DRAWING TITLE

DRAWING NUMBER

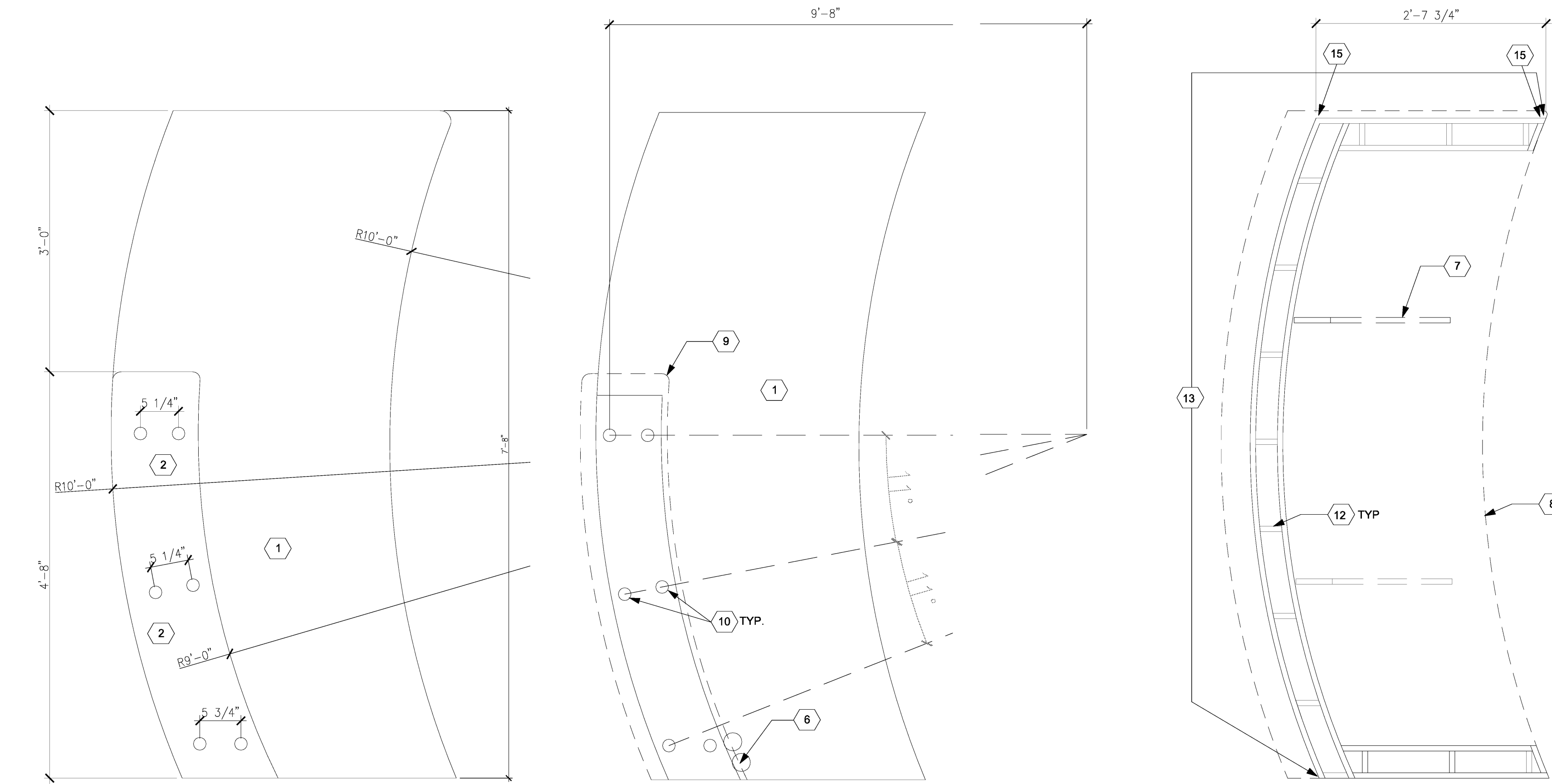
A10.1.2

CO #134

1. SOLID SURFACE COUNTER, 1/2" THICK OVER 2 LAYERS OF 3/8" TREATED PLYWOOD SUBSTRATE. 1 1/2" BULLNOSE EDGING ALL ADEGES. SEE SHEET IA5.2A.
2. 1" BULLNOSE GLASS COUNTER, ETCHED BOTTOM, POLISHED TOP AND BULLNOSES PROVIDE 1/4" DIAMETER HOLES FOR STANDOFF SUPPORTS. SEE IA5.2A.
3. 3/4" TREATED PLYWOOD SUBSTRATE WITH WOOD VENEER FINISH ON ALL EXPOSED SURFACES. SEE IA5.2A.
4. 1/8" STAINLESS STEEL BASE, FINISH #4 GLUED TO TREATED PLYWOOD SUBSTRATE 3/4" THICK, TREATED. FASTEN TO WOOD BLOCKING WITH #12 FLAT HEAD WOOD.
5. CONTINUOUS 2 X 6 TREATED WOOD BLOCKING, ANCHOR TO SLAB WITH 0.145" DIAMETER, X 1" EMBED RAM SET 1500 SERIES POWDER ACTUATED FASTENERS @ 18" O.C. SEE E3/A9.0 INC. #7.
6. PLASTIC GROMMET, 2-1/2", BLACK. SEE IA5.2A FOR LOCATION.
7. 3/4" TREATED PLYWOOD SUPPORT, ALL EXPOSED SURFACES VENEER FINISH. SEE IA5.2.
8. LINE OF COUNTERTOP ABOVE.
9. 1 1/2" RADIUS CORNERS.
10. STAINLESS STEEL STANDOFF, DOUG MOCKETT MPB10/CAP3 WITH 2" SCREW CONNECTOR, 1 1/2" HIGH, 1/8" DIAMETER CONNECTOR.
11. RUBBER BASE ON INTERIOR OF DESK. SEE INTERIORS.
12. PLYWOOD STUD SUPPORTS @ EVERY 12" O.C.
13. 1/8" X 1/8" HORIZONTAL STAINLESS STEEL REVEAL.
14. 1/8" X 1/8" VERTICAL STAINLESS STEEL REVEAL.
15. 1/8" X 1/8" VERTICAL STAINLESS STEEL REVEAL IN CORNER.
16. TWO LAYERS OF 3/4" TREATED PLYWOOD SUBSTRATE WITH WOOD VENEER FINISH ON ALL EXPOSED SURFACES. SEE IA5.2A.
17. DRILLED HOLES WITH METAL SHELF INSERTS.
18. PLYWOOD BASE, 3/4" THICK, TREATED. FASTEN TO WOOD BLOCKING WITH #12 FLAT HEAD WOOD SCREWS, COUNTERSUNK.
19. SCHEDULED BASE.
20. ADJUSTABLE SHELVES, SEE REFERENCED CABINET MODULE FOR QUANTITY OF SHELVES.
21. DRAWER AND DOOR PULLS.
22. NOT USED.
23. NOT USED.
24. 1/4" REVEAL AT WOOD PANELS.
25. SCHEDULED PARTITION.
26. PLYWOOD, 1/2", PANELS WITH WOOD VENEER ALL EXPOSED SURFACES. SEE INTERIORS FOR FINISH DESIGNATION.
27. NOT USED.
28. WOOD DOOR FRAME, SEE DOOR SCHEDULE FOR DOOR DESIGNATION AND HARDWARE.
29. MORTISED SOSS HINGE.
30. SCHEDULED DOOR, WITH APPLIED VENEER FINISH, SEE INTERIORS.
31. 1/2" WOOD BLOCKING WITH VENEER ON EXPOSED SURFACES. SEE INTERIORS FOR FINISH DESIGNATION.
32. 1/2" S.S. REVEAL.

ELEVATION DETAIL

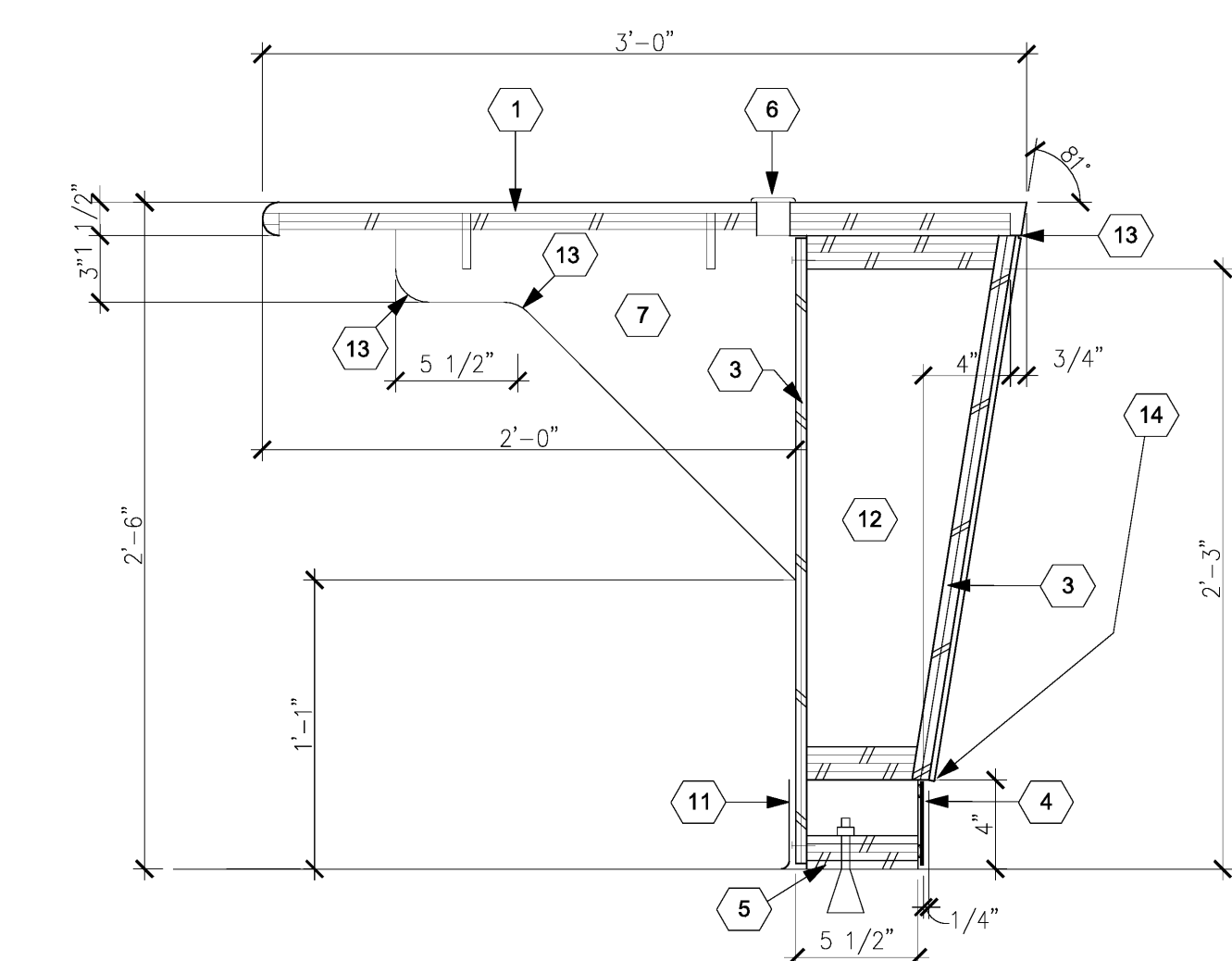
## E6 CEO OFFICE - WOOD VENEER WALL DETAIL AT ROOM #2.113.20



### C2A CEO OFFICE- WOOD VENEER WALL SECTION

### C2B CEO OFFICE- WOOD VENEER WALL SECTION

## D1 KEYED NOTES TO SHEET

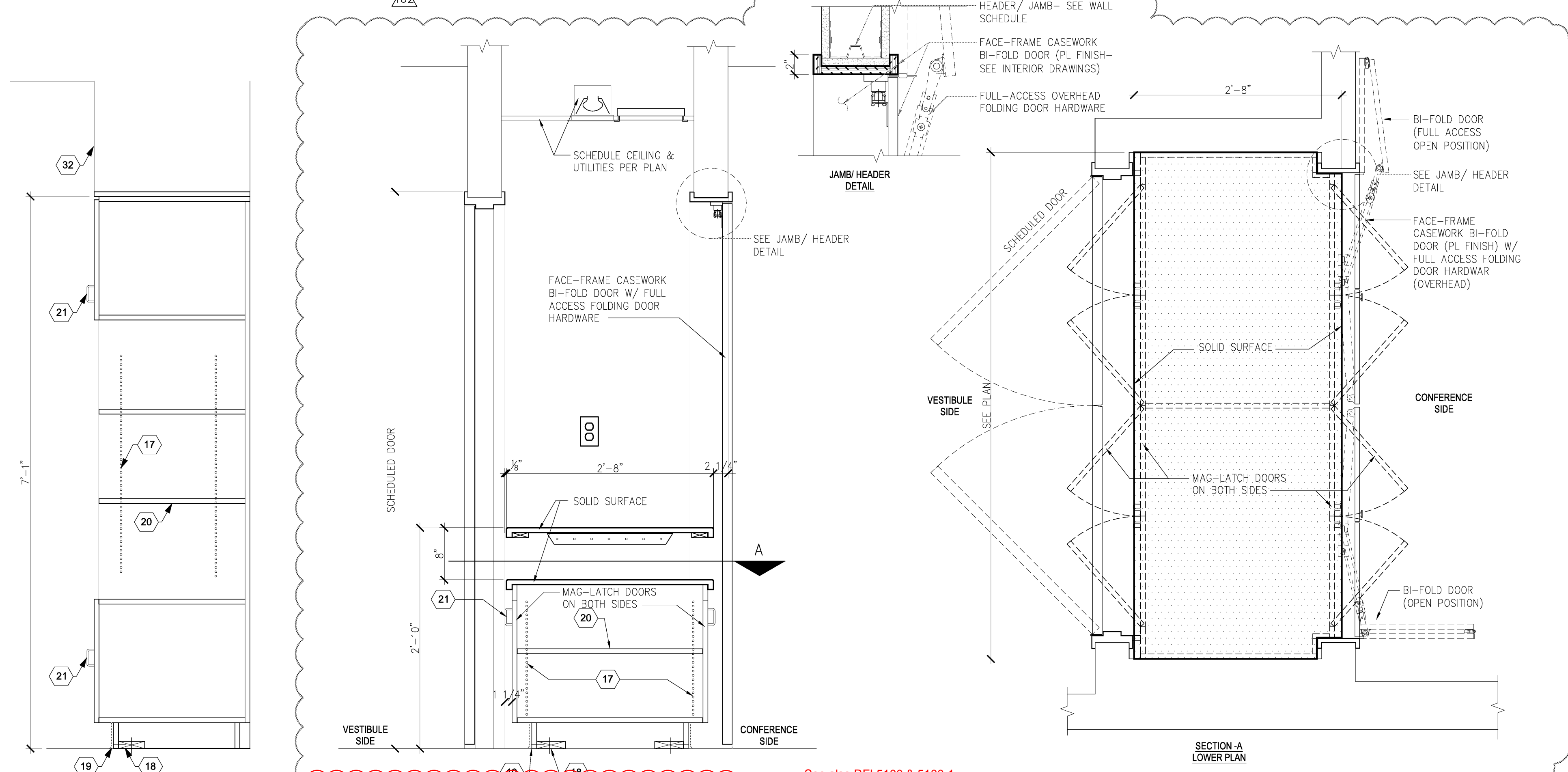


### C6 RECEPTION DESK - ABOVE TRANSACTION TOP

### C5 RECEPTION DESK- ABOVE COUNTER TOP

### C3 RECEPTION DESK- BELOW COUNTER TOP

### C1 RECEPTION DESK

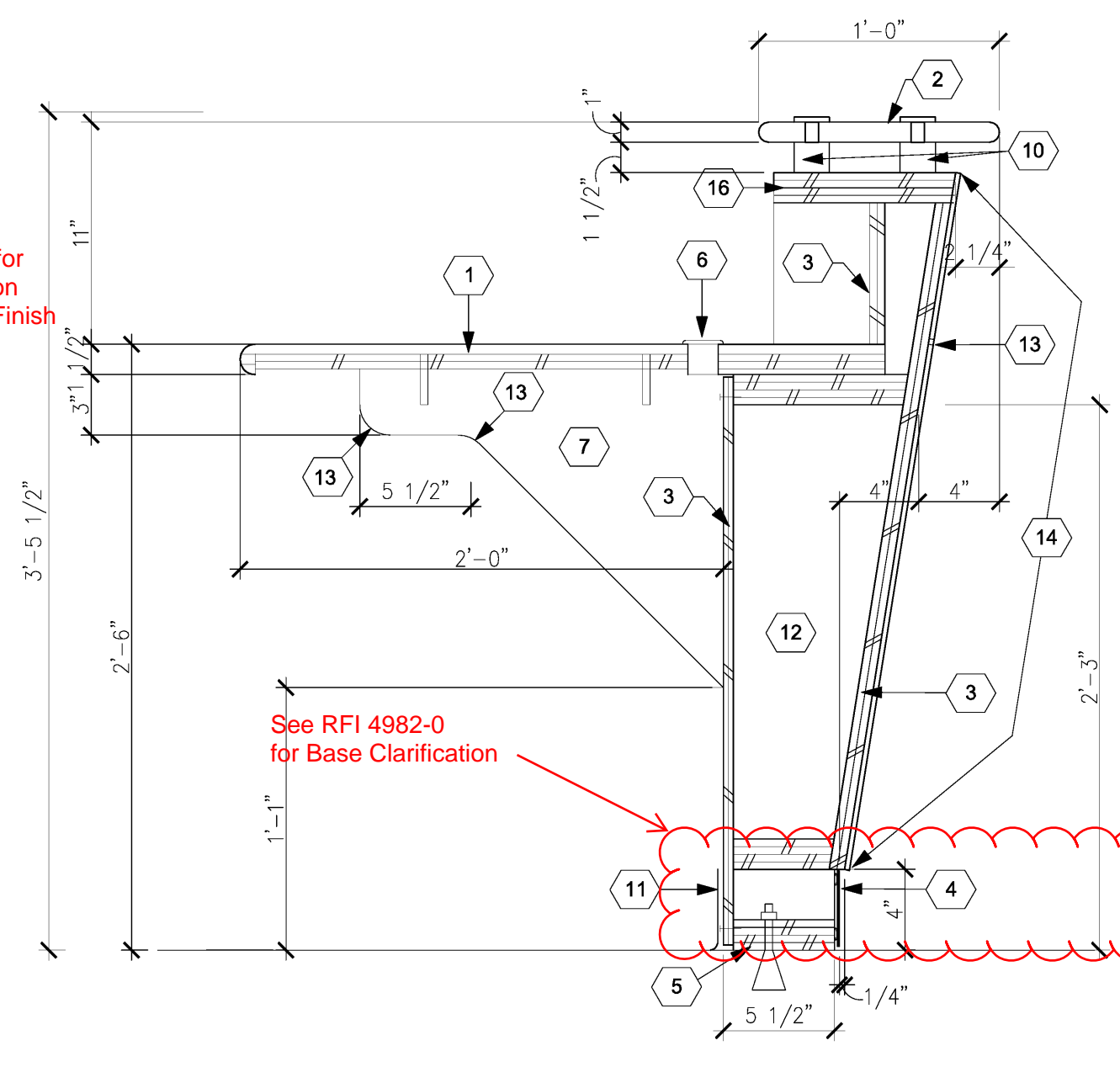


### A5 CABINET SECTION

### A4 PASS THRU SECTION

### A3 ENLARGED RECEPTION PLAN RM#2.113.20

### A1 RECEPTION DESK



DRAWING NUMBER

A10.1.2

CO #134