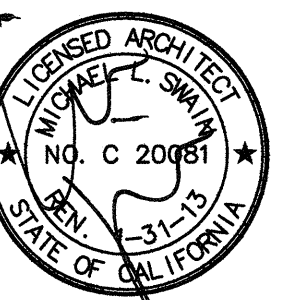


FKP Architects

ARCHITECT OF RECORD
Paul C. Gloriod

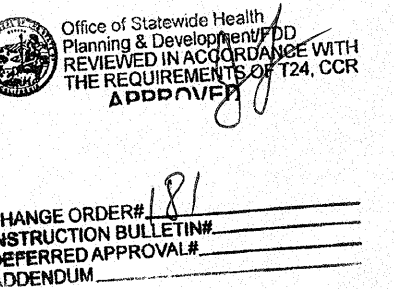


Changes on these drawings do not consist of
materially altered changes to approved drawings
and don't require a change order.
OSHPD review ACO _____
OSHPD review FLSO _____
OSHPD review DSE _____

REVISIONS

23A 08/07/11 CO #181

APPROVAL



PROJECT NAME
**CHILDREN'S HOSPITAL
OF ORANGE COUNTY**
455 S. Main St.
Orange, CA 92668-3874

TOWER II RECEIVED
June 08 2011
McCarthy



PROJECT NUMBER
**12011.00
Increment #7**

OSHPD - PROJECT NUMBER
IL 072072-30

ISSUE
OSHPD PERMIT

DATE
01/27/2010

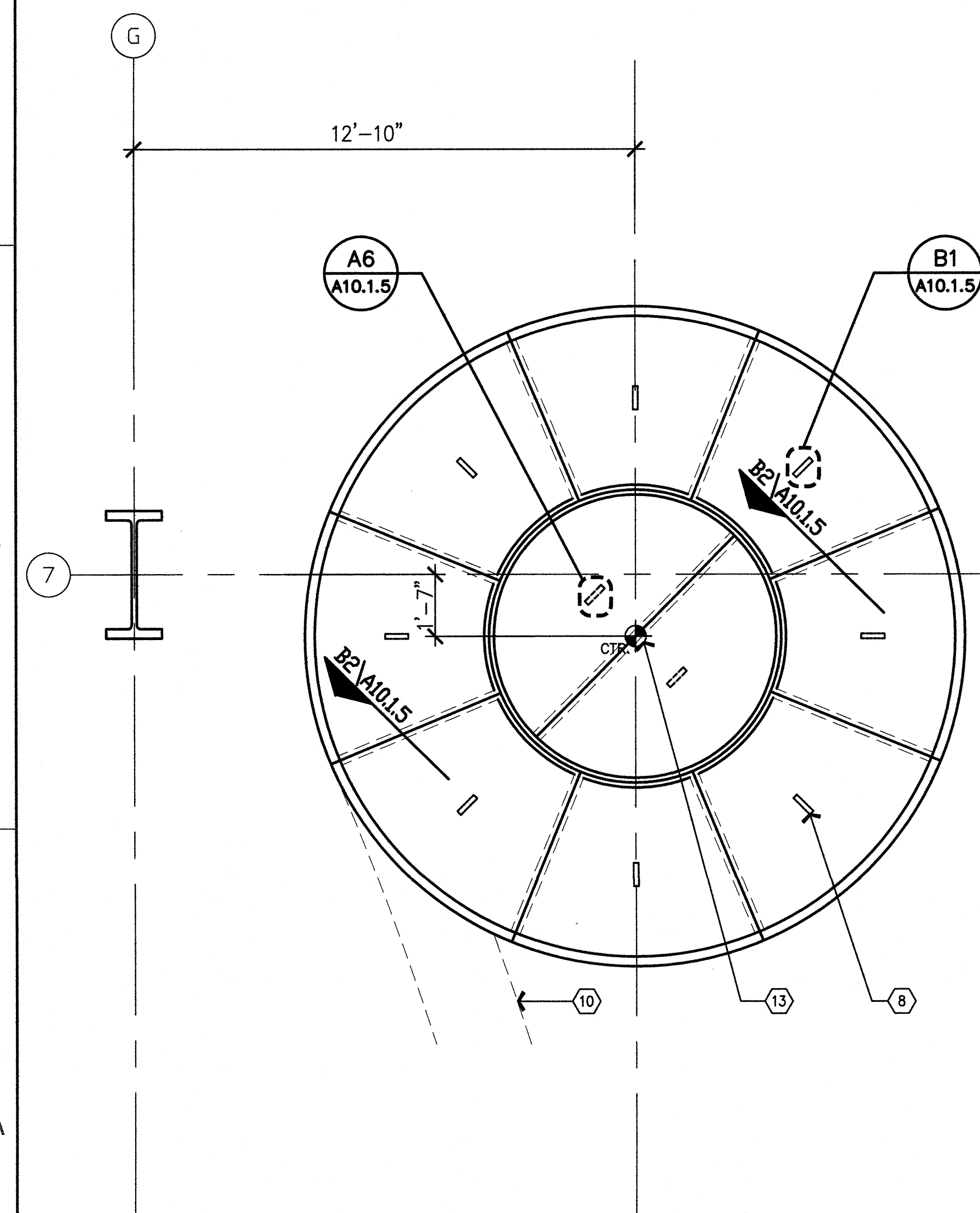
SCALE

1/8" = 1' - 0"

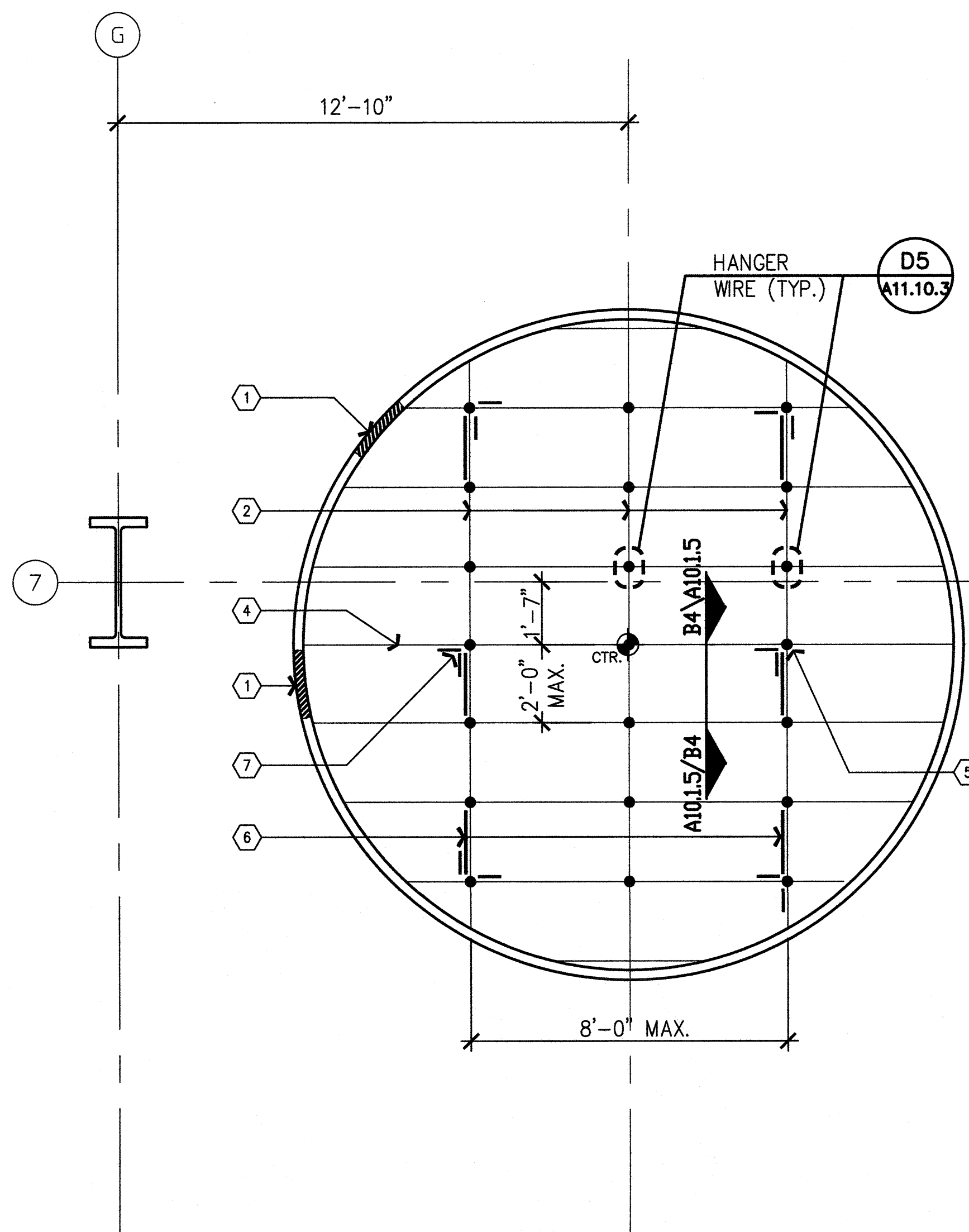
DRAWING TITLE
**LEVEL 2
FEATURE WALL RCP**

DRAWING NUMBER

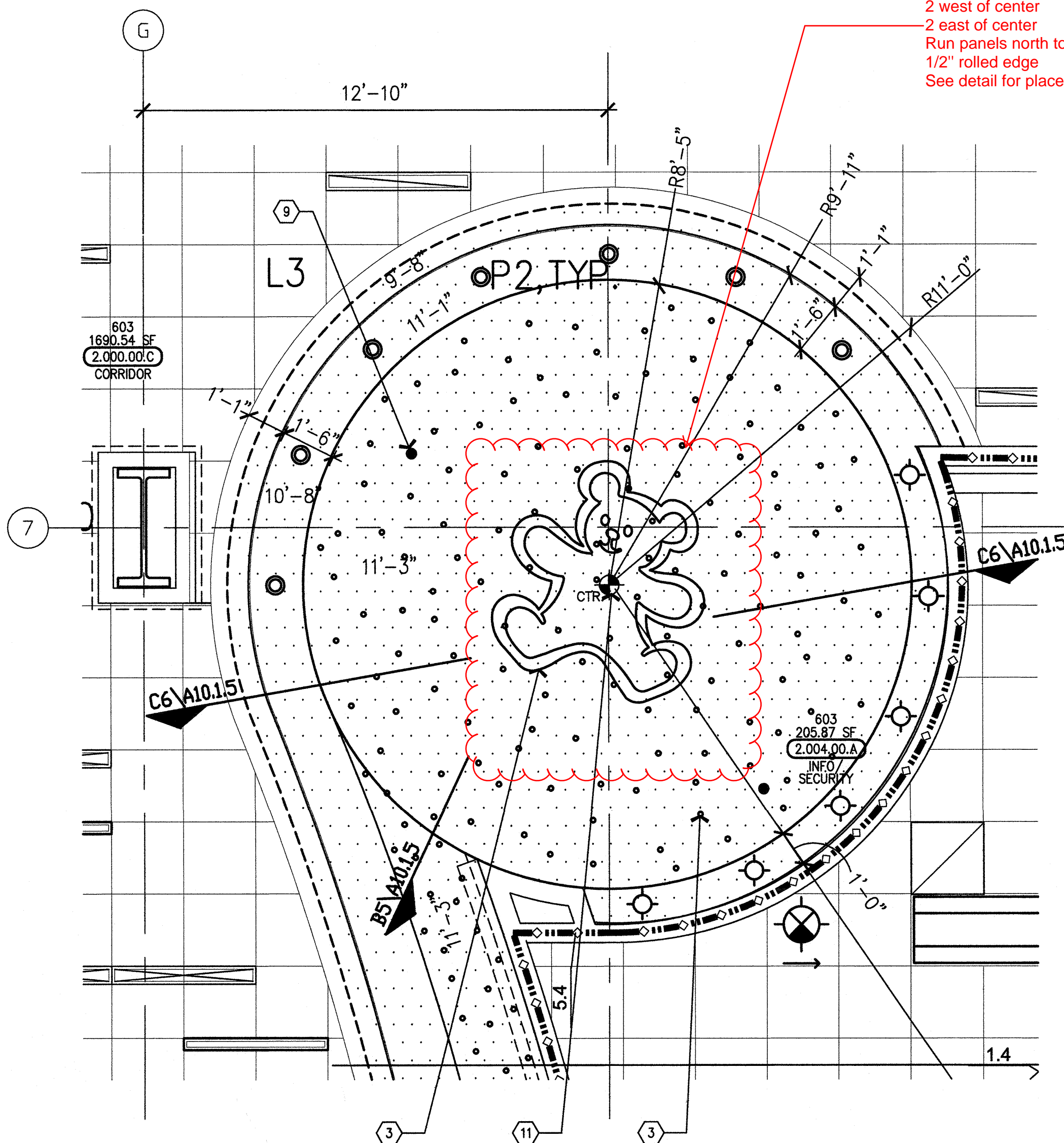
A10.1.4



A6 GRC PANEL LAYOUT
3/8" = 1'-0"



A4 JOIST LAYOUT
3/8" = 1'-0"



A2 ENLARGED CEILING PLAN AT DOMED CEILING
3/8" = 1'-0"

1. Provide 19" x 24" MIN. unobstructed Access area thru framing
2. 2" x 12GA strap w/ #10 SMS @ each joist (Top & Bott.) & 1 #10 SMS at perimeter cont. Curve strap top & bott. each ends.
3. Special lighting, CHOC logo, fiber optic to be coordinated by contractor & final layout approved by arch.
4. 400S162-54 @ 24" O.C.
5. 2 1/2" Stud hanger (Typ.) - Where braces occurs - Total of (6)
6. Blocking as shown - Total of (6)
7. 25" x 16 GA 2 way brace - Total of (6) location Typical.
8. 1 1/2" x 8" ORC imbed (Typ.)
9. Sprinkler head escutcheon, to be painted to match dark blue (GC-2).
10. Dashed line indicate light cove, dome intersection.
11. Center point, coordinate with floor and casework
12. Not used
13. Center point, coordinate with floor and casework.

Note:
Refer to detail A3/A11.6 for metal stud framing/bracing connections to concrete over metal deck.

A1 Notes to Sheet
N.T.S.

\\MSA-COFFICE\CADDSEK\0600\0602 CHOC TOWER 2 SHELL BUILDING\PP CONTRACTED PROJECTS\PROJECT INCREMENTS\WOR_#17_TENANT IMPROVEMENT\OSHPD PERMIT (CONSTRUCTION DOCUMENTS)\0602_04_V10.1.4.DWG
6/6/2011
RULA