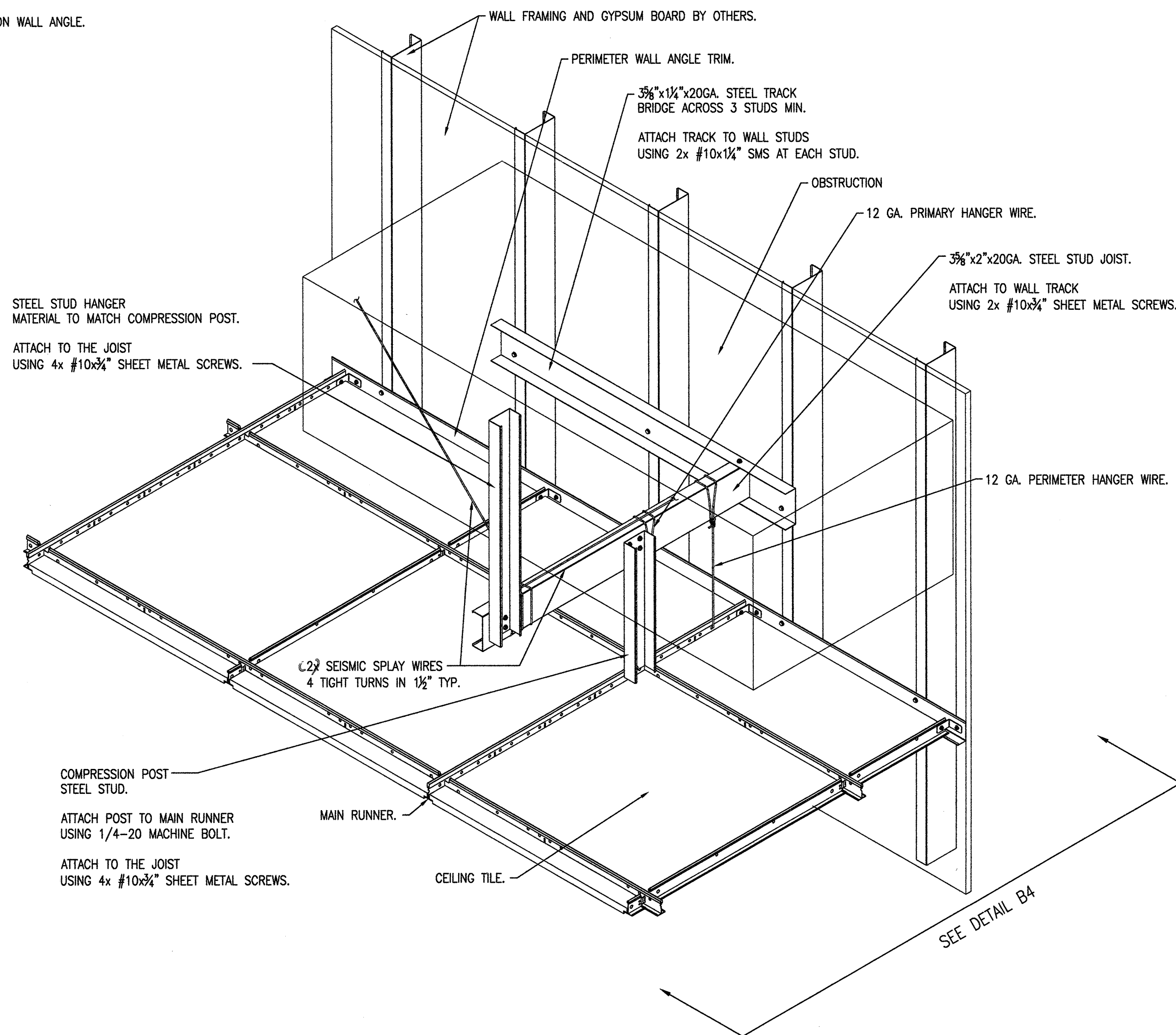


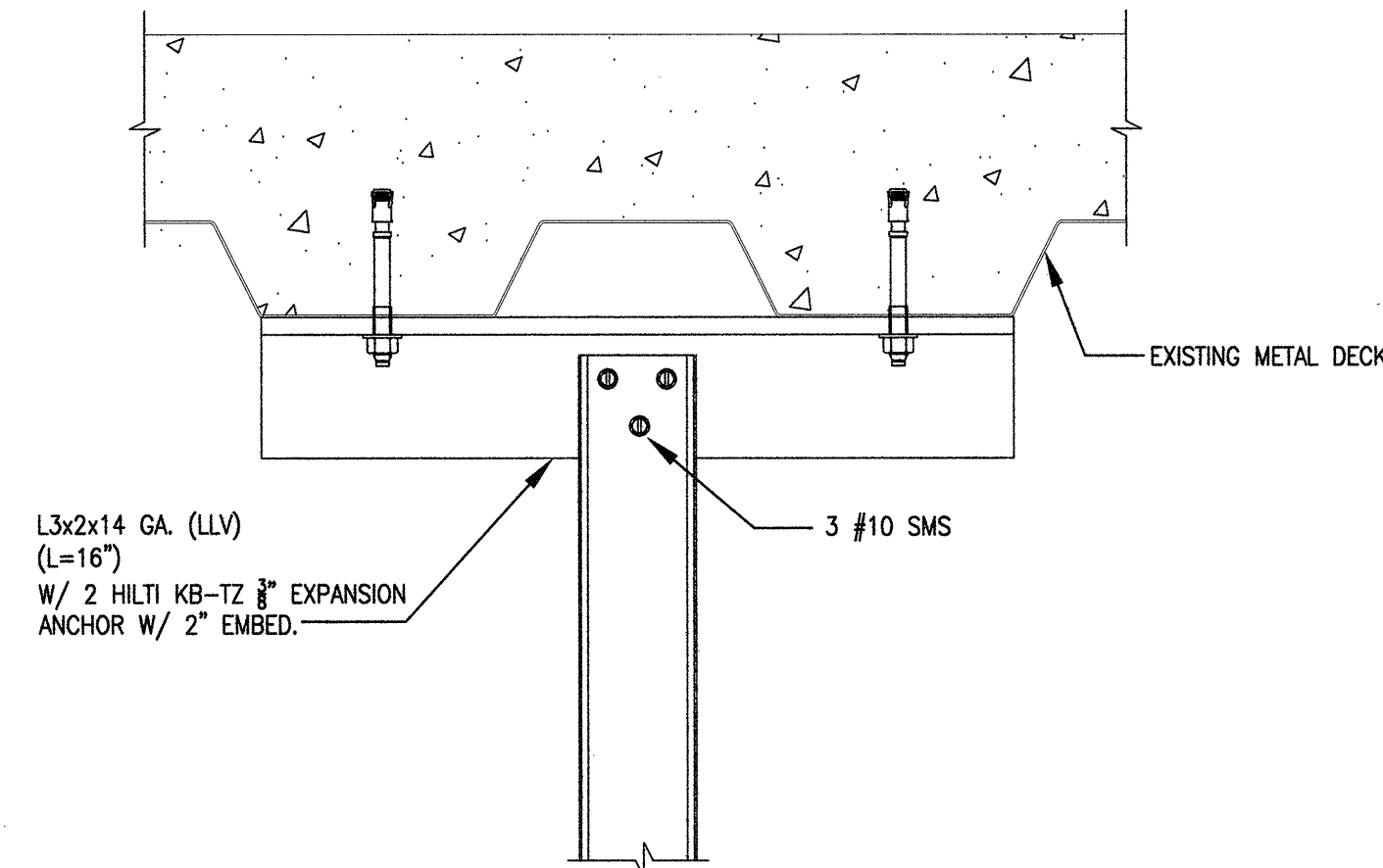
NOTE #1  
ALL WIRE CONNECTIONS TO THE JOIST ARE SADDLE TIED.

NOTE #2  
GRID HELD UP SO REGULAR TILES SIT FLUSH ON WALL ANGLE.

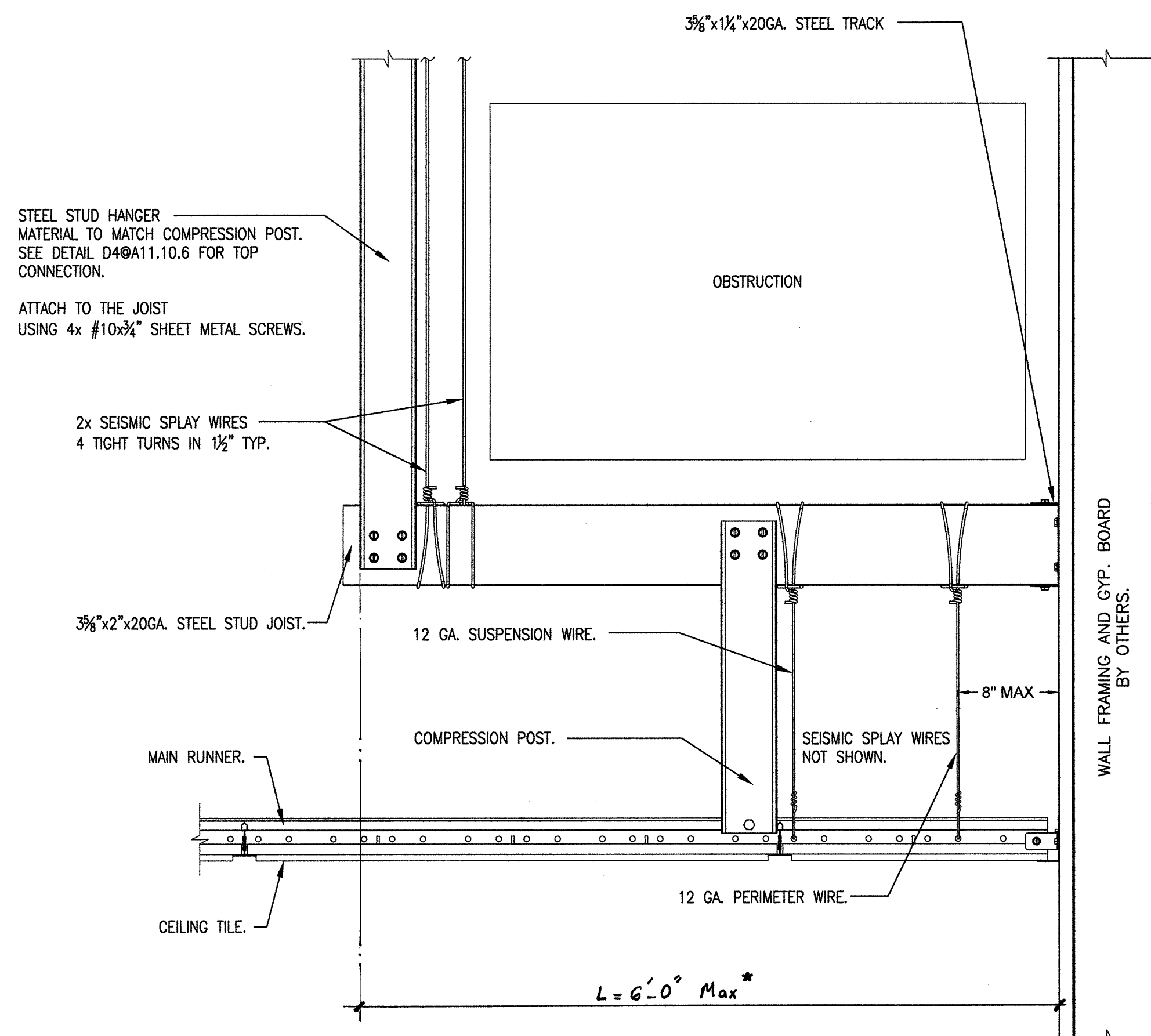
NOTE #3  
SEISMIC SPLAY WIRES NOT SHOWN.



**C6 T-BAR CEILING WITH TEGULAR TILE CORRIDOR INSTALLATION - SEISMIC BRACE**

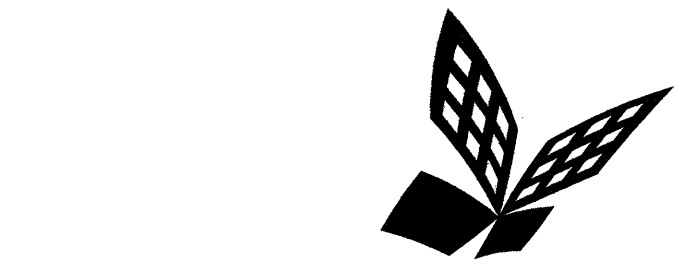


**D4 STEEL STUD HANGER TOP CONNECTION**



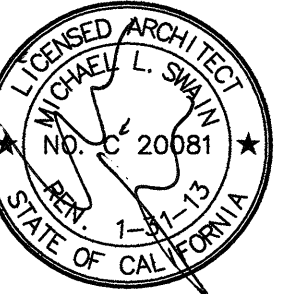
Note: Provide Box Stud where L > 6'-0", up to 10'-0" Max

**B4 SECTION**



FKP Architects

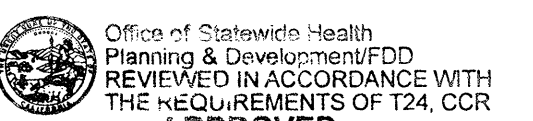
ARCHITECT OF RECORD  
Paul C. Gloriod



REVISIONS

173 02/23/11 CO#147

APPROVAL



MAR 02 2011

CHANGE ORDER# CO#147  
INSTRUCTION BULLETIN  
DEFERRED APPROVAL  
ADDENDUM

PROJECT NAME

CHILDREN'S HOSPITAL  
OF ORANGE COUNTY  
455 S. Main St.  
Orange, CA 92668-3874

TOWER II



PROJECT NUMBER

12011.00  
Increment #7

OSHPD - PROJECT NUMBER

IL 072072-30

ISSUE

OSHPD PERMIT

DATE

01/27/2010

SCALE

N.T.S.

DRAWING TITLE

CEILING DETAILS

DRAWING NUMBER

A11.10.6

