

FKP Architects

ARCHITECT OF RECORD

Paul C. Gloriod

FOR INFORMATION ONLY

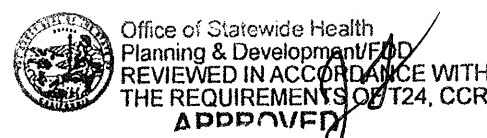


Changes on these drawings do not consist of  
materially altered changes to approved drawings  
and don't require a change order.  
OSHPD review ACO \_\_\_\_\_  
OSHPD review FLSO \_\_\_\_\_  
OSHPD review DSE \_\_\_\_\_

REVISIONS

11/ 08/22/11 COR247

APPROVAL



CHANGE ORDER# 247  
INSTRUCTION BULLETIN#  
DEFERRED APPROVAL  
ADDENDUM

PROJECT NAME

CHILDREN'S HOSPITAL  
OF ORANGE COUNTY

455 S. Main St.  
Orange, CA 92668-3874

RECEIVED  
AUG 23 2011  
TOWER II McCARTHY



PROJECT NUMBER

12011.00  
Increment #7

OSHPD - PROJECT NUMBER

IL 072072-30

ISSUE

OSHPD PERMIT

DATE

01/27/2010

SCALE

N.T.S.

DRAWING TITLE

MISCELLANEOUS  
PARTITIONS

DRAWING NUMBER

A11.3.2.1



E

D

C

B

A

D6 NOT USED

D5 NOT USED

D4 NOT USED

D3 NOT USED

D1 NOT USED

B6 NOT USED

B5 NOT USED

B4 NOT USED

B3 NOT USED

B2 NOT USED

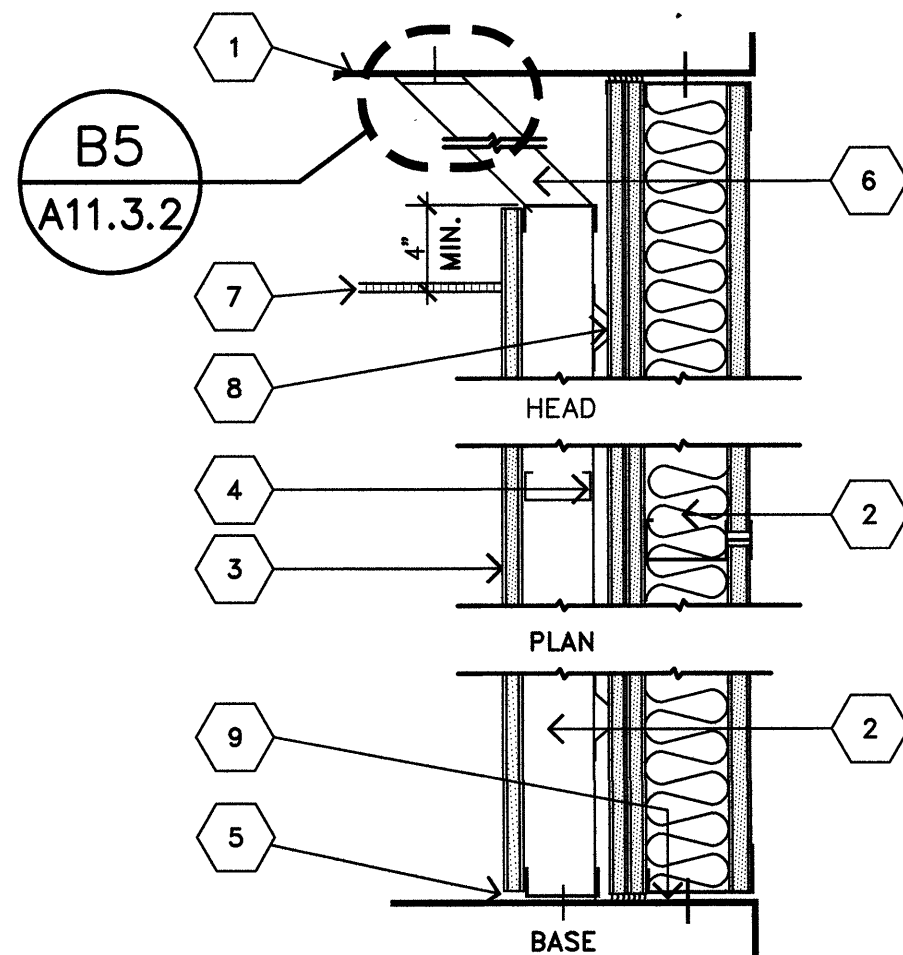
A6 NOT USED

A5 NOT USED

A4 NOT USED

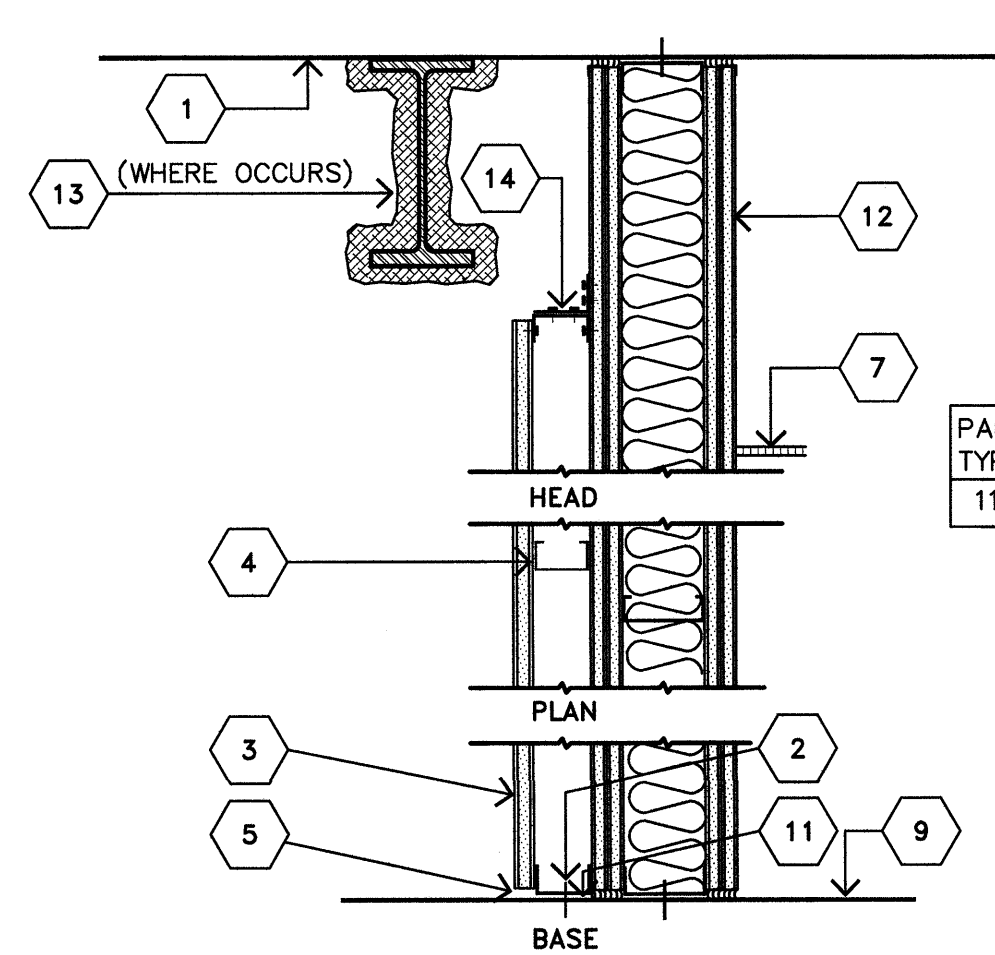
A3 FURRING PARTITION AT SHAFT WALL

A2 FURRING PARTITION AT 2-HR



DRYWALL FURRING

1. UNDERSIDE OF STRUCT. DECK.
2. PROVIDE (SEE GEN. NOTE #36/A11.3) HILT. XU 157 X 1" P.D.F. @ 24" O.C.
3. GYPSUM BOARD, 5/8" THICK. ON SIDE A. SEE GEN. NOTES TO PARTITION TYPES.
4. METAL STUD @ 16" O.C.
5. HOLD GYPSUM BOARD 1/8" MIN. ABOVE FLOOR BUT NOT MORE THAN 3/8". REMOVE SHIMS.
6. BRACE PARTITION TO STRUCT. 4" STUDS 16GA, 4'-0" O.C. MAX.
7. CLING FINISH AND HEIGHT. SEE REFLECTED CEILING PLAN.
8. METAL FURRING CHANNEL, CONTINUOUS AT 24 IN. O.C.
9. FLOOR SLAB.



DRYWALL FURRING

1. UNDERSIDE OF STRUCT. DECK.
2. PROVIDE (SEE GEN. NOTE #36/A11.3) HILT. XU 157 X 1" P.D.F. @ 24" O.C.
3. GYPSUM BOARD, 5/8" THICK. ON SIDE A. SEE GEN. NOTES TO PARTITION TYPES.
4. 2 1/2" METAL STUD @ 16" O.C. FOR SIZE SEE CHART ABOVE.
5. HOLD GYPSUM BOARD 1/8" MIN. ABOVE FLOOR BUT NOT MORE THAN 3/8". REMOVE SHIMS.
6. NOT USED
7. CEILING FINISH AND HEIGHT. SEE REFLECTED CEILING PLAN.
8. NOT USED
9. FLOOR SLAB.
10. NOT USED
11. PROVIDE (SEE GEN. NOTE #36/A11.3) HILT. XU 157 X 1" POWER DRIVEN FASTENER TO ANCHOR STUD TRACK TO BUILDING STRUCTURE @ 24" O.C.
12. 2-HR WALL PER DET. A3/A11.3
13. STRUCTURAL STEEL BEAM/FIREPROOFING
14. 2" X 2" X 16GA ANGLE W/ 3 #10 SMS @ EACH STUD AND TO TOP TRACK W/ 3 #10 SMS @ 16 O.C.

PART TYPE	STUD SIZE
11.2	2 1/2"