

E

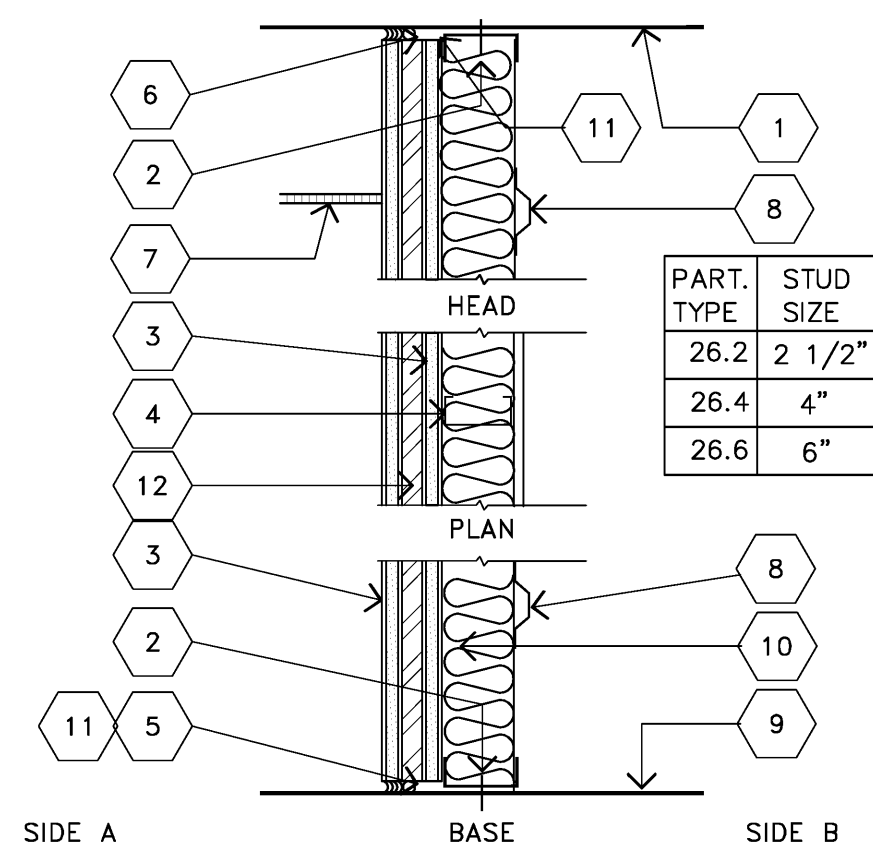
D

C

B

A

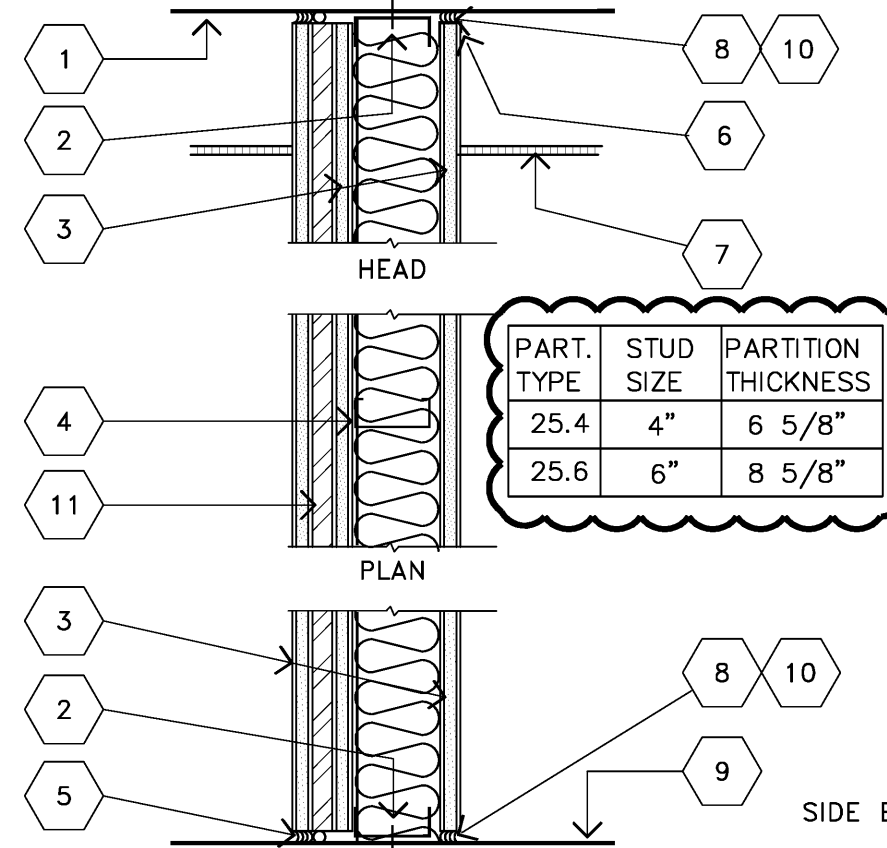
A6



DRYWALL FURRING

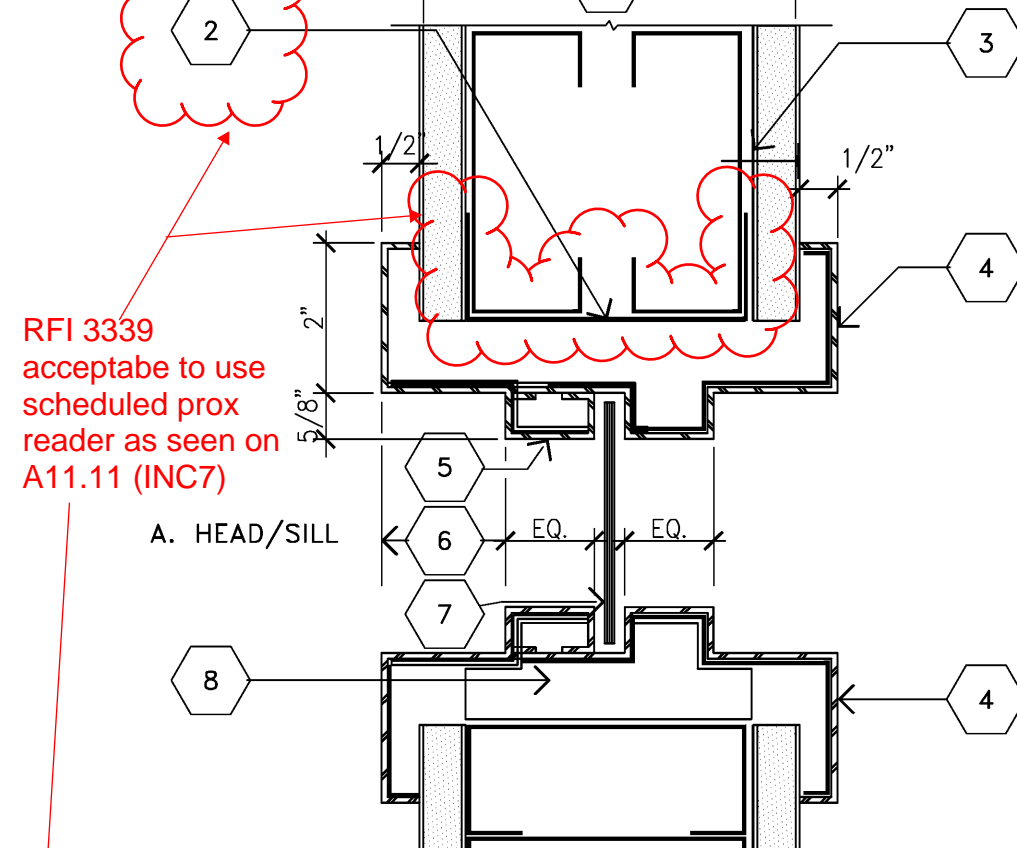
- UNDERSIDE OF STRUCT. DECK. PROVIDE (SEE GEN. NOTE #36/A11.3) HILTI XU157 X 1" POWER DRIVEN FASTENER TO ANCHOR STUD TRACK TO BUILDING STRUCTURE @ 24" O.C. GYPSUM BOARD, 5/8" THICK. ON SIDE A. SEE GEN. NOTES TO PARTITION TYPES.
- METAL STUD @ 16" O.C. FOR SIZE SEE CHART ABOVE. HOLD GYPSUM BOARD 1/8" MIN. ABOVE FLOOR BUT NOT MORE THAN 3/8". REMOVE SHIMS.
- CASING BEAD AT ALL ABUTTING CONDITIONS WHERE JOINT WILL REMAIN VISIBLE. SEE REFLECTED CEILING PLANS.
- METAL FURRING CHANNEL, CONTINUOUS AT 24" O.C. FLOOR SLAB. 48".
- SOUND INSULATION AND PERIMETER ACOUSTICAL SEALANT WHEN NOTED ON PARTITION TYPE WITH A "S" SUFFIX.
- PLYWOOD 3/4" FIRE RATED.

RFI 1965.1



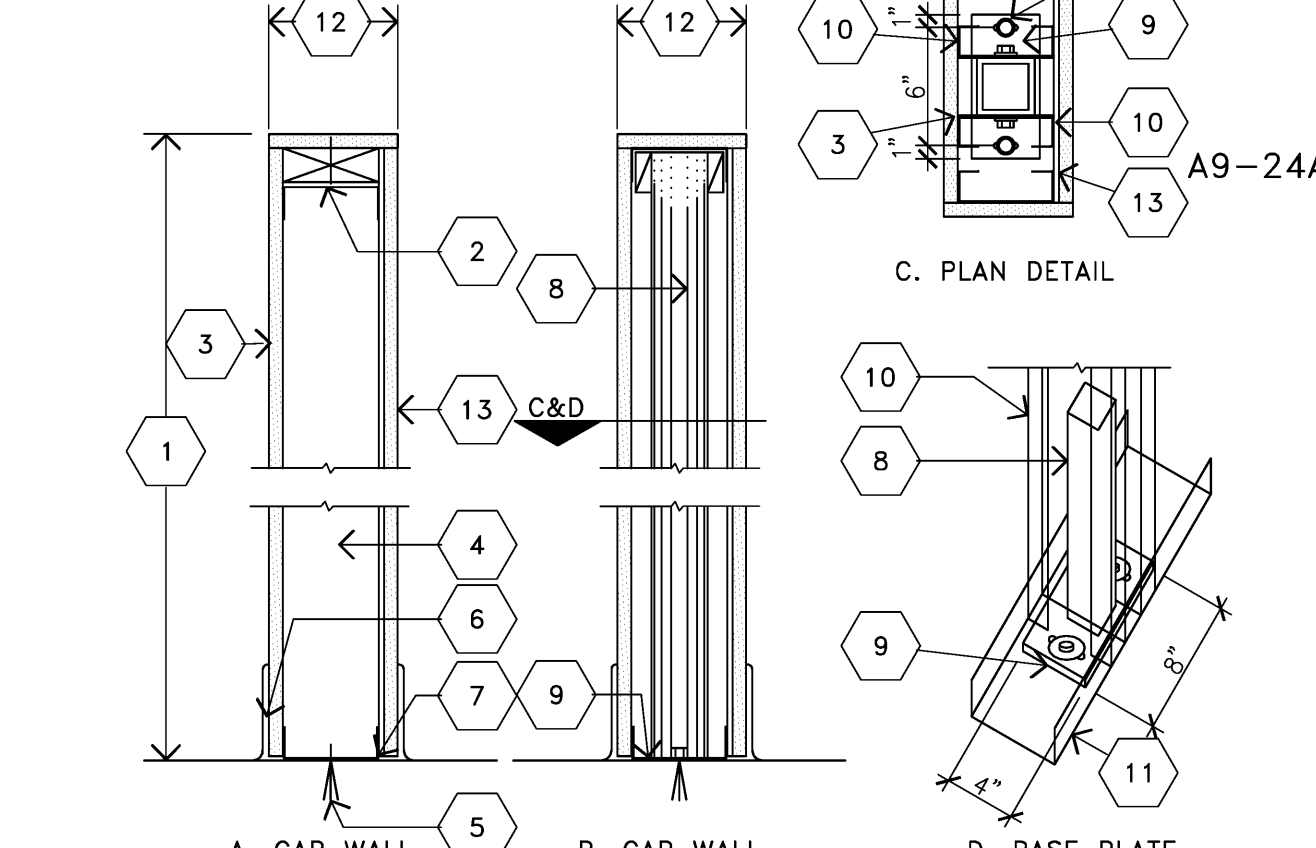
DRYWALL PARTITION

- UNDERSIDE OF STRUCT. DECK. PROVIDE (SEE GEN. NOTE #36/A11.3) HILTI XU157 X 1" POWER DRIVEN FASTENER TO ANCHOR STUD TRACK TO BUILDING STRUCTURE @ 24" O.C. GYPSUM BOARD.
- METAL STUD @ 16" O.C. FOR SIZE SEE CHART ABOVE. HOLD GYPSUM BOARD 1/8" MIN. ABOVE FLOOR BUT NOT MORE THAN 3/8". REMOVE SHIMS.
- CASING BEAD AT ALL ABUTTING CONDITIONS WHERE JOINT WILL REMAIN VISIBLE.
- CEILING FINISH AND HEIGHT. SEE REFLECTED CEILING PLANS. AT FIRE RATED PARTITION PROVIDE U.L. RATED JOINT ASSEMBLY MATCHING RATING OF WALL.
- FLOOR SLAB.
- SOUND INSULATION AND PERIMETER ACOUSTICAL SEALANT WHEN NOTED ON PARTITION TYPE WITH A "S" SUFFIX.
- PLYWOOD 3/4" FIRE RATED.



LEAD LINED METAL WINDOW FRAME

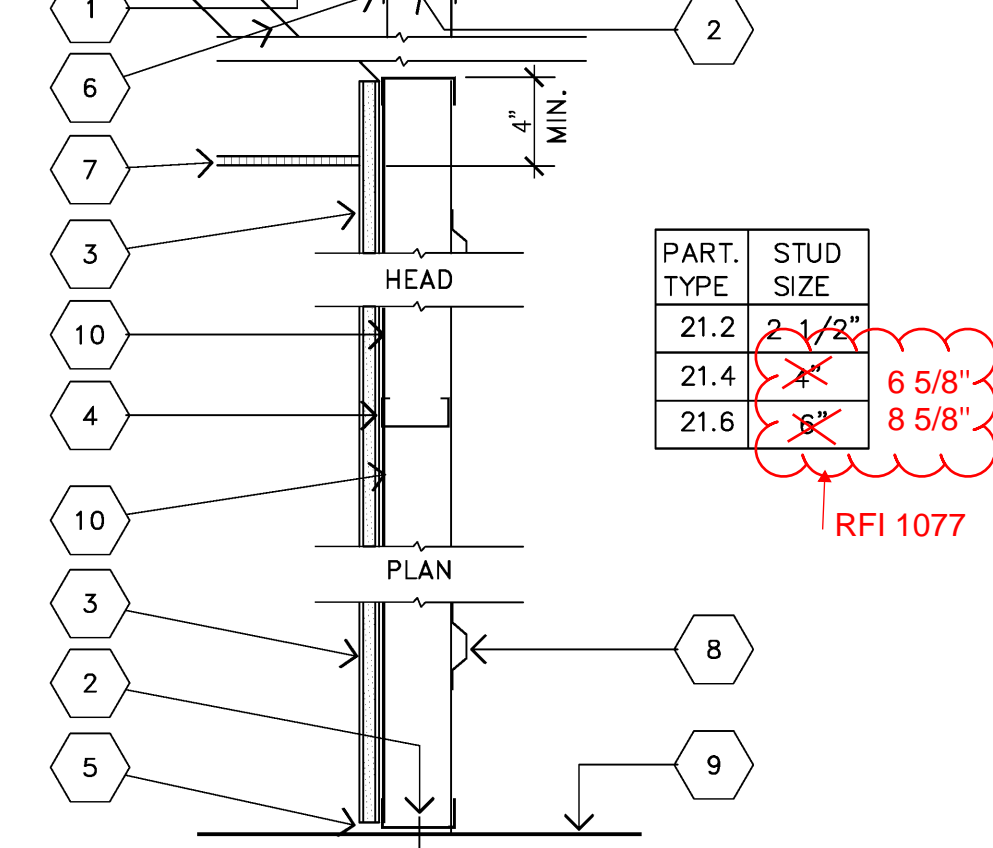
- SCHEDULED PARTITION TYPE. SEE PLANS AND GENERAL NOTES TO PARTITION TYPES.
- RUNNER TRACK @ HEAD, SECURE TO VERT. STUDS AT JAMBS. LEAD LINED GYPSUM BOARD. SEE PARTITION TYPE.
- LEAD LINED HOLLOW METAL FRAME. LEAD LINING TO MATCH PARTITION CONSTRUCTION.
- HOLLOW METAL STOP.
- EQUAL FRAME RABBITS 1 3/4" NOM. UNLESS OTHERWISE NOTED.
- SCHEDULED LEAD GLASS, MATCH EQUIVALENT LEAD CONTENT OF ADJACENT PARTITION; GLASS THICKNESS VARIES.
- JAMB ANCHORS SUPPLIED BY FRAME MFG.



CAP WALL - LEAD LINED

- CAP WALL- UNFINISHED HEIGHT 1'-0" UNLESS NOTED ON PLANS.
- RUNNER TRACK, 16 GAUGE.
- GYPSUM BOARD, 5/8" THICK.
- 4" METAL STUDS 16" O.C.
- PROVIDE (SEE GEN. NOTE #36/A11.3) HILTI XU157 X 1" P.D.F. @ 24 O.C.
- SCHEDULED BASE FINISH. HOLD GYP. BD. 1/4" OFF FLOOR.
- TS 2 1/2" X 2 1/2" X 3/16".
- EQUAL FRAME RABBITS 1 3/4" NOM. UNLESS OTHERWISE NOTED.
- METAL STUDS.
- RUNNER TRACK, CONTIN. BELOW BASE PLATE.
- PARTITION WIDTH AS NOTED IN PARTITION TYPE.
- LEAD LINED GYPSUM BOARD, INSTALL WITH LINING AGAINST SUPPORTS. AT PANEL JOINTS PROVIDE 1-1/2" WIDE LEAD BACKING STRIP FULL HEIGHT OF LEAD LINED GYPSUM PANELS.
- 5/8" DIAMETER THRU BOLT.

NOTE: SEE STRUCTURE (INCREMENT #5) FOR MEMBER SIZES AND CONNECTIONS.



DRYWALL PARTITION

- UNDERSIDE OF STRUCT. DECK. PROVIDE (SEE GEN. NOTE #36/A11.3) HILTI XU157 X 1" POWER DRIVEN FASTENER TO ANCHOR STUD TRACK TO BUILDING STRUCTURE @ 24" O.C.
- LEAD LINED GYPSUM BOARD, INSTALL WITH LINING AGAINST SUPPORTS. AT PANEL JOINTS PROVIDE 1-1/2" WIDE LEAD BACKING STRIP FULL HT. OF LEAD LINED GYPSUM PANELS.
- METAL STUD @ 16" O.C. FOR SIZE SEE CHART ABOVE. HOLD GYPSUM BOARD 1/8" MIN. ABOVE FLOOR BUT NOT MORE THAN 3/8". REMOVE SHIMS.
- BRACE PARTITION TO STRUCT. BY EITHER EXTENDING ALL STUDS TO DECK OR BY MEANS OF DIAGONAL BRACES ON ALT. SIDES (WHERE CLEARANCE PERMITS) ON 4 FT. CENTERS MAX.
- ANY REQ'D. CEILING & HT. METAL FURRING CHANNEL, CONTINUOUS AT 24 IN. O.C. FLOOR SLAB/ PARTITION BASE.
- LEAD LINED GYPSUM BOARD, INSTALL WITH LINING AGAINST SUPPORTS AT PANEL JOINTS PROVIDE 1 1/2" WIDE LEAD BACKING STRIP FULL HT. OF LEAD LINED GYPSUM PANELS.
- FOR BRACING AND TOP CONNECTION SEE DETAILS B5 AND B6 ON SHEET A11.3.2

RFI 1965.1
RFI 1965
USE D6/A11.1

RFI 694
All power driven fasteners size is .157 diameter 1" min long

REVISIONS

NO.	DATE	DESCRIPTION
1	03/11/10	CHANGE ORDER #17
2	05/28/10	ASI #08

APPROVAL

PROJECT NAME
CHILDREN'S HOSPITAL OF ORANGE COUNTY
455 S. Main St.
Orange, CA 92668-3874

TOWER II



PROJECT NUMBER
12011.00 Increment #7

OSHPD - PROJECT NUMBER
IL 072072-30

ISSUE
OSHPD PERMIT

DATE
01/27/2010

SCALE

N.T.S.

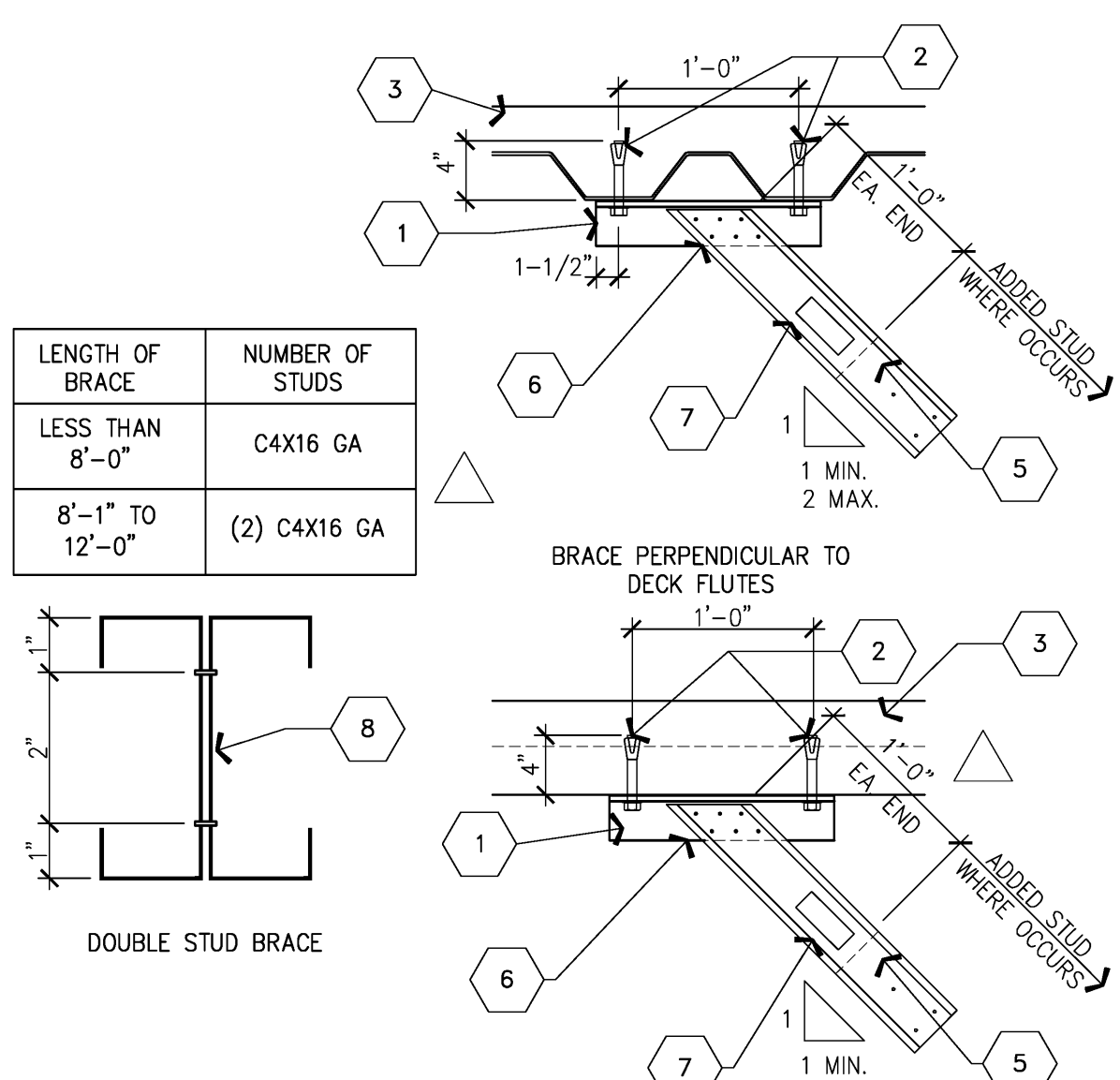
DRAWING TITLE

MISCELLANEOUS PARTITIONS

DRAWING NUMBER

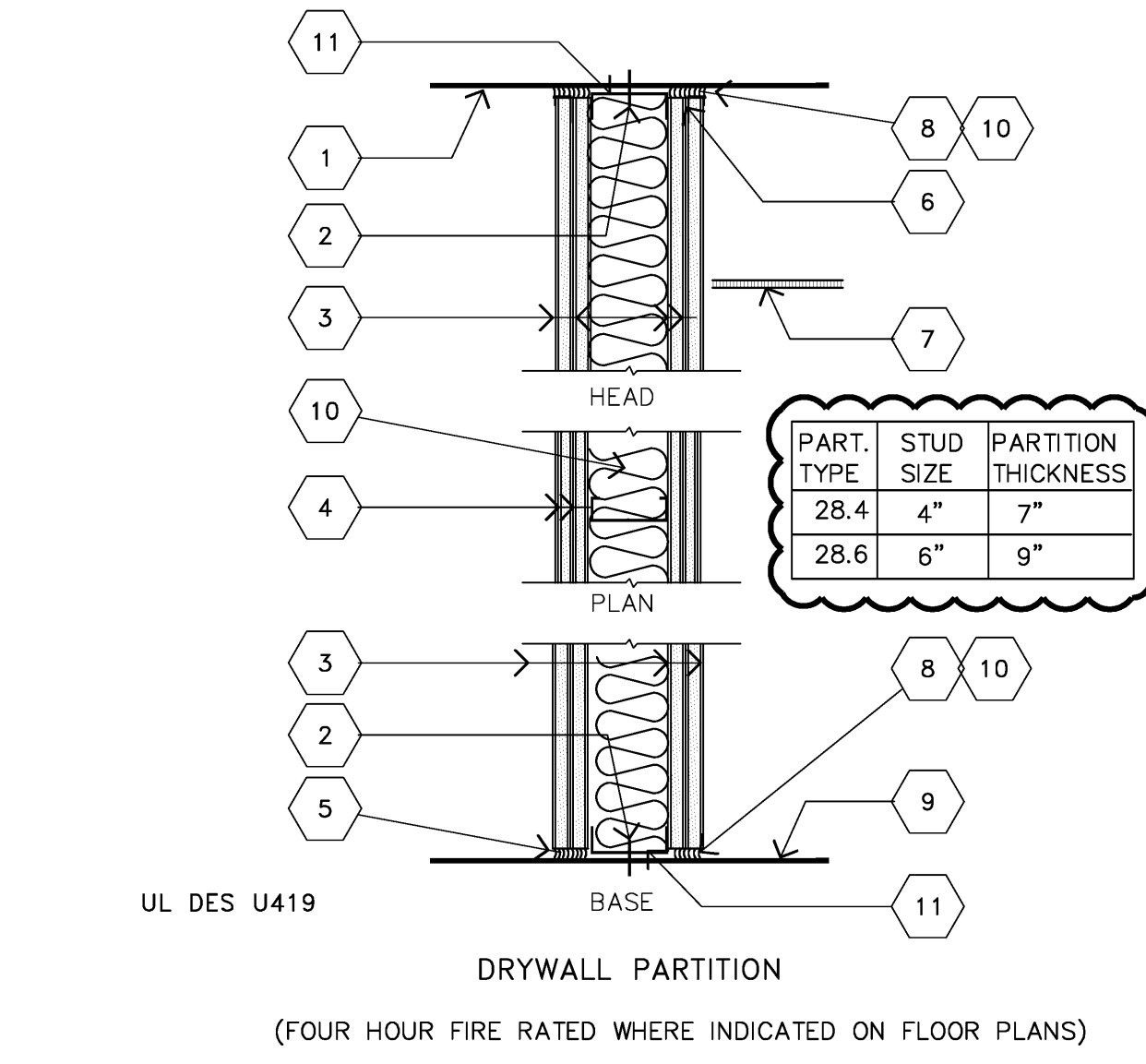
A11.3.2

PARTITION TO STRUCTURE TYPE 25



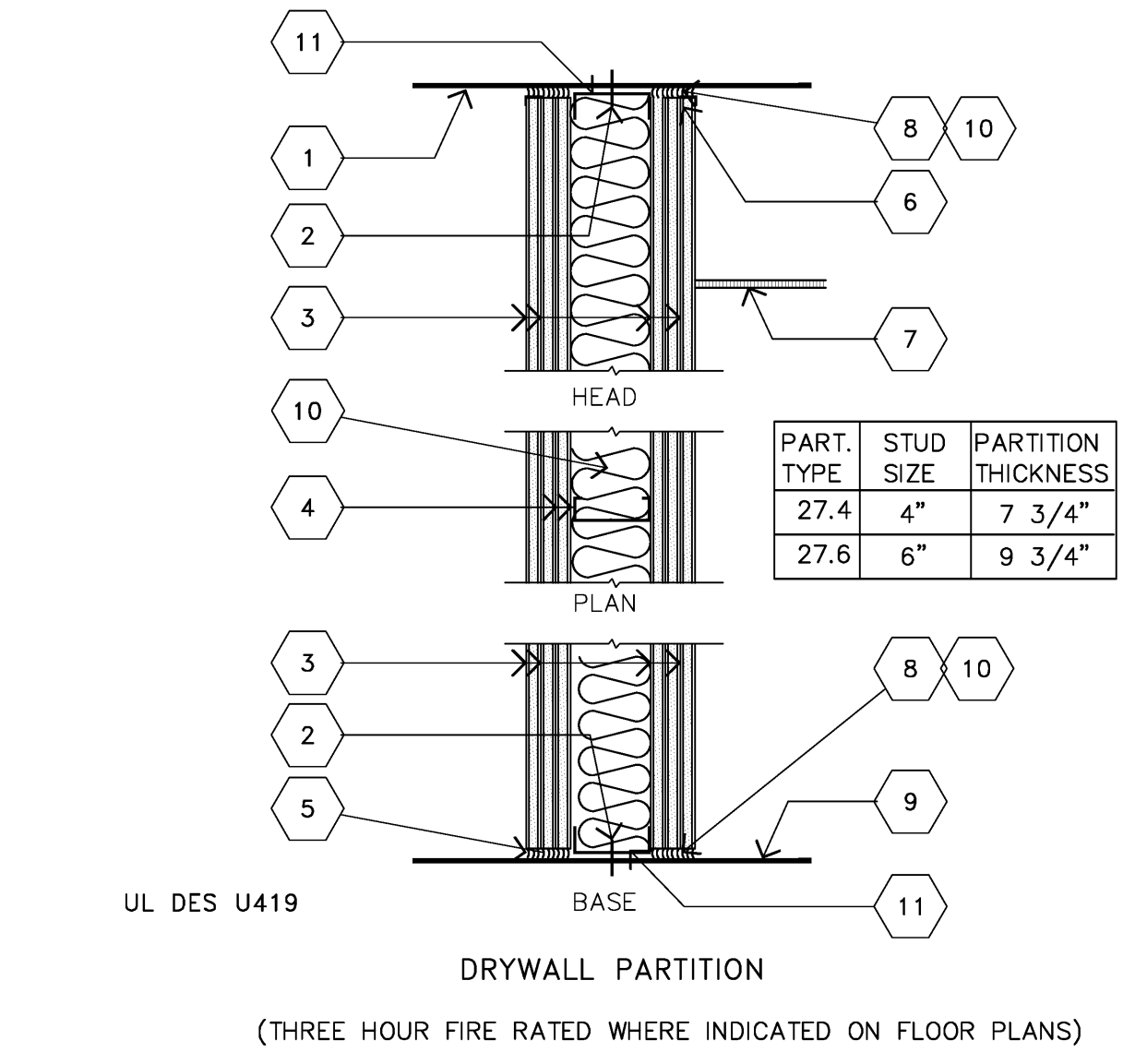
- 1/11 3" X 3" X 3/16" STEEL ANGLE.
- (2) 1/2" HILTI KB7Z A.B. EXPANSION BOLTS WITH 4" EMBED.
- FLOOR SLAB METAL DECK.
- NOT USED.
- BRACE AND CONNECTION SAME AS FOR PERPENDICULAR TO DECK AND FLUTES.
- 6--#10 S.M.S. @ 1-1/4" APART MIN.
- BRACE AT 48" O.C. MAX. SEE WALL SECTION FOR LOCATION.
- 2 STUDS WITH #10 @ 12" O.C. STAGGERED 2 EACH END.

PARTITION TO STRUCTURE TYPE 28



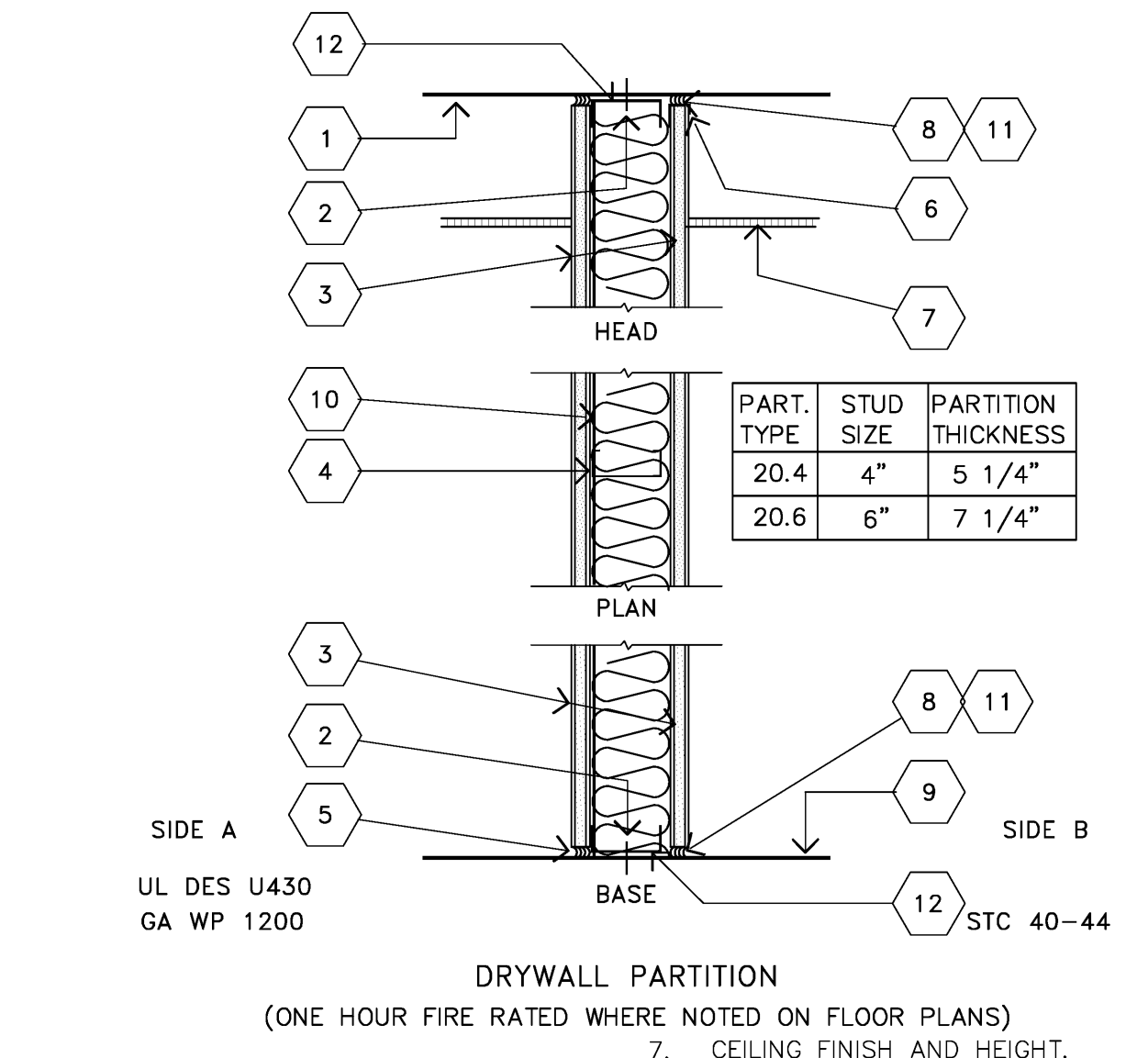
- UNDERSIDE OF STRUCT. DECK. PROVIDE (SEE GEN. NOTE #36/A11.3) HILTI XU157 X 1" POWER DRIVEN FASTENER TO ANCHOR STUD TRACK TO BUILDING STRUCTURE @ 24" O.C. GYPSUM BOARD, 5/8" THICK. SEE GEN. NOTES TO PARTITION TYPES.
- METAL STUD @ 16" O.C. FOR SIZE SEE CHART ABOVE.
- HOLD GYPSUM BOARD 1/8" MIN. ABOVE FLOOR BUT NOT MORE THAN 3/8". REMOVE SHIMS.
- CASING BEAD AT ALL ABUTTING CONDITIONS WHERE JOINT WILL REMAIN VISIBLE.
- CEILING FINISH AND HEIGHT. SEE REFLECTED CEILING PLANS. AT FIRE RATED PARTITIONS PROVIDE U.L. RATED JOINT ASSEMBLY MATCHING RATING OF WALL.
- FLOOR SLAB.
- SOUND INSULATION AND PERIMETER ACOUSTICAL SEALANT WHEN NOTED ON PARTITION TYPE WITH A "S" SUFFIX.
- SEE DETAIL B4/A11.3.1 FOR HEAD OF WALL AND BASE OF WALL DETAIL.

PARTITION TO STRUCTURE TYPE 27



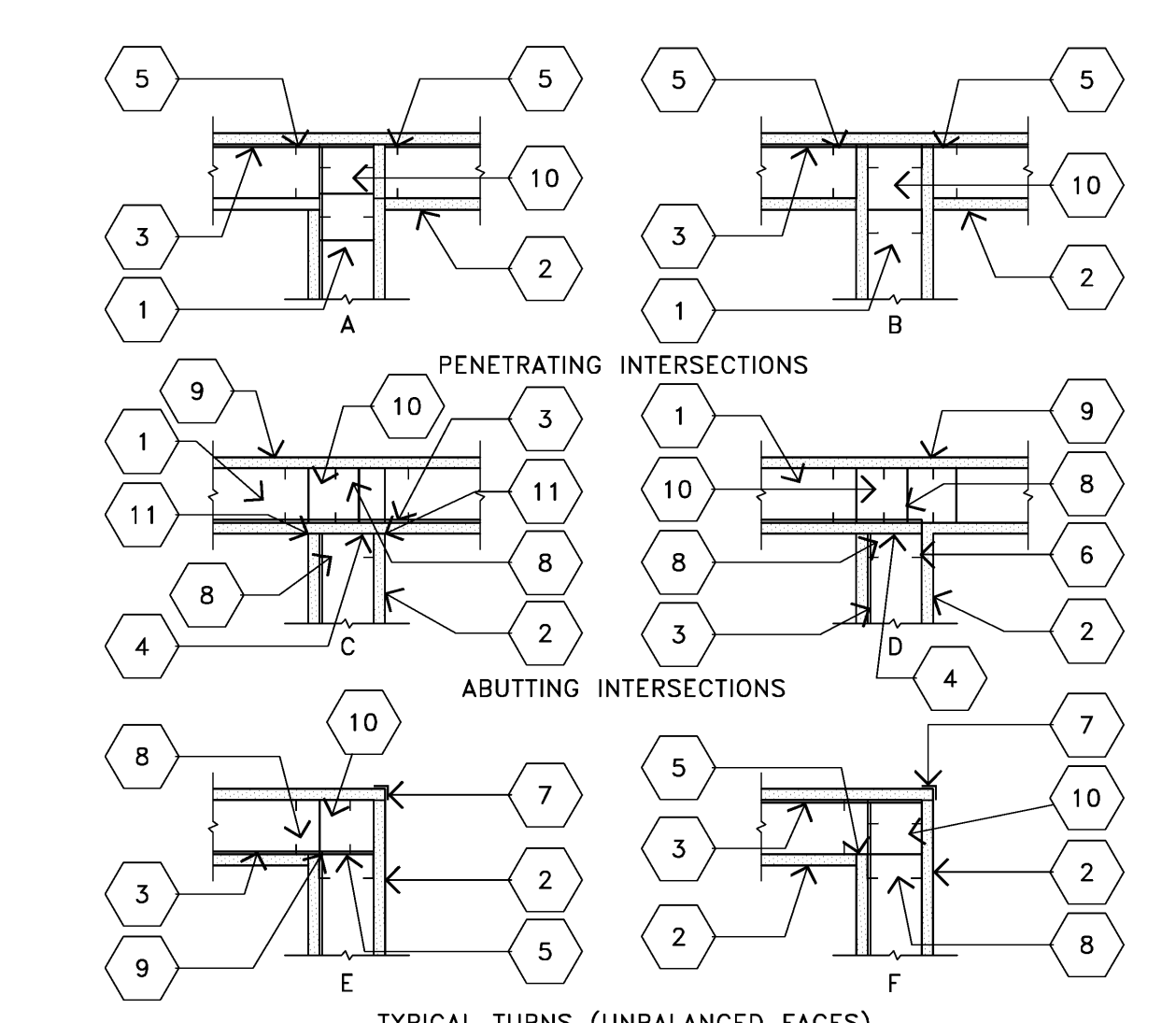
- UNDERSIDE OF STRUCT. DECK. PROVIDE (SEE GEN. NOTE #36/A11.3) HILTI XU157 X 1" POWER DRIVEN FASTENER TO ANCHOR STUD TRACK TO BUILDING STRUCTURE @ 24" O.C. GYPSUM BOARD, 5/8" THICK. SEE GEN. NOTES TO PARTITION TYPES.
- METAL STUD @ 16" O.C. FOR SIZE SEE CHART ABOVE.
- HOLD GYPSUM BOARD 1/8" MIN. ABOVE FLOOR BUT NOT MORE THAN 3/8". REMOVE SHIMS.
- CASING BEAD AT ALL ABUTTING CONDITIONS WHERE JOINT WILL REMAIN VISIBLE.
- CEILING FINISH AND HEIGHT. SEE REFLECTED CEILING PLANS. AT FIRE RATED PARTITIONS PROVIDE U.L. RATED JOINT ASSEMBLY MATCHING RATING OF WALL.
- FLOOR SLAB.
- SOUND INSULATION AND PERIMETER ACOUSTICAL SEALANT WHEN NOTED ON PARTITION TYPE WITH A "S" SUFFIX.
- SEE DETAIL B4/A11.3.1 FOR HEAD OF WALL AND BASE OF WALL DETAIL.

LEAD LINED PARTITION TYPE 20



- UNDERSIDE OF STRUCT. DECK. PROVIDE (SEE GEN. NOTE #36/A11.3) HILTI XU157 X 1" POWER DRIVEN FASTENER TO ANCHOR STUD TRACK TO BUILDING STRUCTURE @ 24" O.C.
- GYPSUM BOARD, 5/8" THICK.
- METAL STUD @ 16" O.C. FOR SIZE SEE CHART ABOVE.
- HOLD GYPSUM BOARD 1/8" MIN. ABOVE FLOOR BUT NOT MORE THAN 3/8". REMOVE SHIMS.
- CASING BEAD AT ALL ABUTTING CONDITIONS WHERE JOINT WILL REMAIN VISIBLE.
- CEILING FINISH AND HEIGHT. SEE REFLECTED CEILING PLANS. AT FIRE RATED PARTITION PROVIDE U.L. RATED JOINT ASSEMBLY MATCHING RATING OF WALL.
- FLOOR SLAB.
- LEAD LINED GYPSUM BOARD INSTALL WITH LINING AGAINST SUPPORTS AT PANEL JOINTS PROVIDE 1 1/2" WIDE LEAD BACKING STRIP FULL HT. OF LEAD LINED GYPSUM PANELS.
- SOUND INSULATION AND PERIMETER ACOUSTICAL SEALANT WHEN NOTED ON PARTITION TYPE WITH A "S" SUFFIX.
- SEE DETAIL B4/A11.3.1 FOR HEAD OF WALL AND BASE OF WALL DETAIL.

TYPICAL STUD BRACING (SLIP TRACK)



- STUD HEADER AND SILL CONT. AT PARTITION HEAD AND BASE.
- GYPSUM BOARD - SEE CODE TO PARTITION TYPES FOR REQUIREMENTS.
- PARTITION BASE LAYER OR LEAD LINING AT ALL PARTITION INTERSECTIONS REGARDLESS OF NORMAL STUD SPACING.
- AT ABUTTING INTERSECTIONS SECURE STUDS TO HEAD AND SILL TRACK AND TO ABUTTING PARTITION FRAMING.
- AT ALL PARTITION INTERSECTIONS, SECURE STUDS TO BOTH TRACKS AND TO INTERSECTING PARTITION FRAMING.
- SEE PARTITION TYPES FOR STUD SIZE AND SPACING.
- DRYWALL ACCESSORY. CORNER BEAD REQUIRED AT ALL OUTSIDE CORNERS.
- LOCATE A WALL STUD AT THIS LOCATION AT ALL PARTITION INTERSECTIONS REGARDLESS OF NORMAL STUD SPACING.
- FIRE RATED PARTITIONS - RUN GYPSUM BOARD CONTINUOUS. PAST PARTITION INTERSECTIONS AT ALL FIRE RATED AND SMOKE BARRIER PARTITIONS.
- STUD SPACER/NAILER.
- SOUND SEALANT AT NOISE BARRIER PARTITIONS.

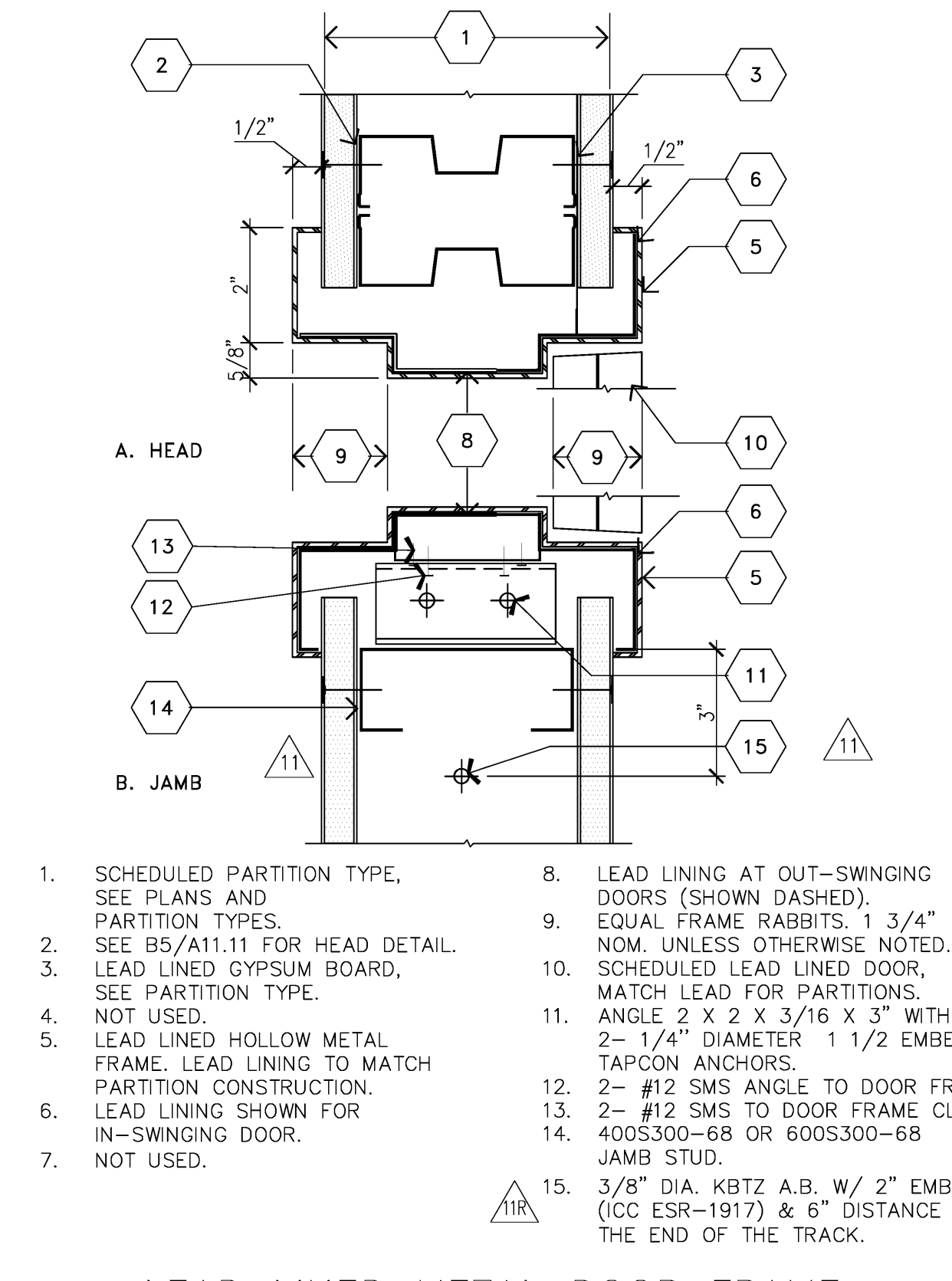
LEAD PARTITION INTERSECTIONS

TYPICAL STUD BRACING

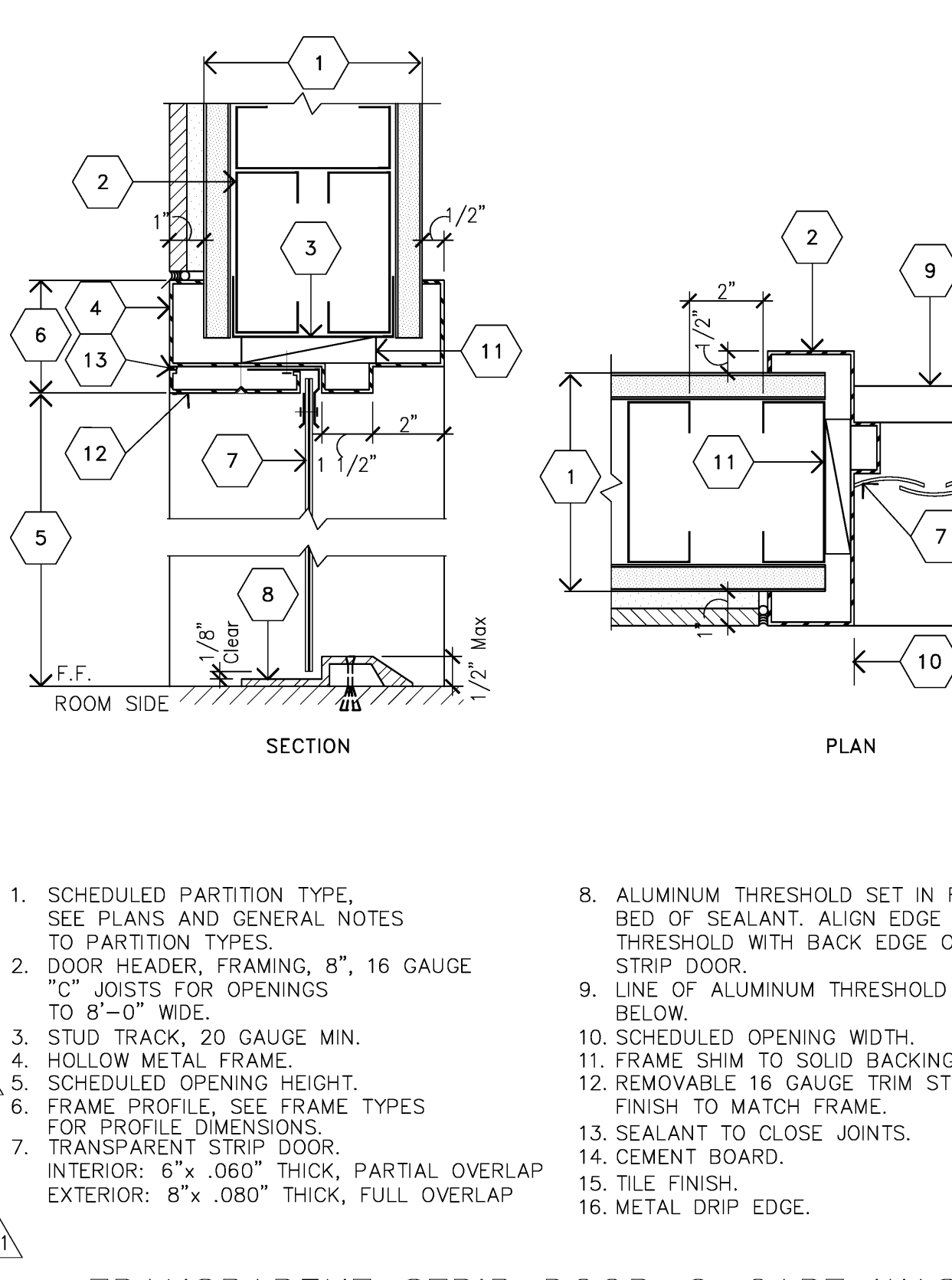


NOT USED

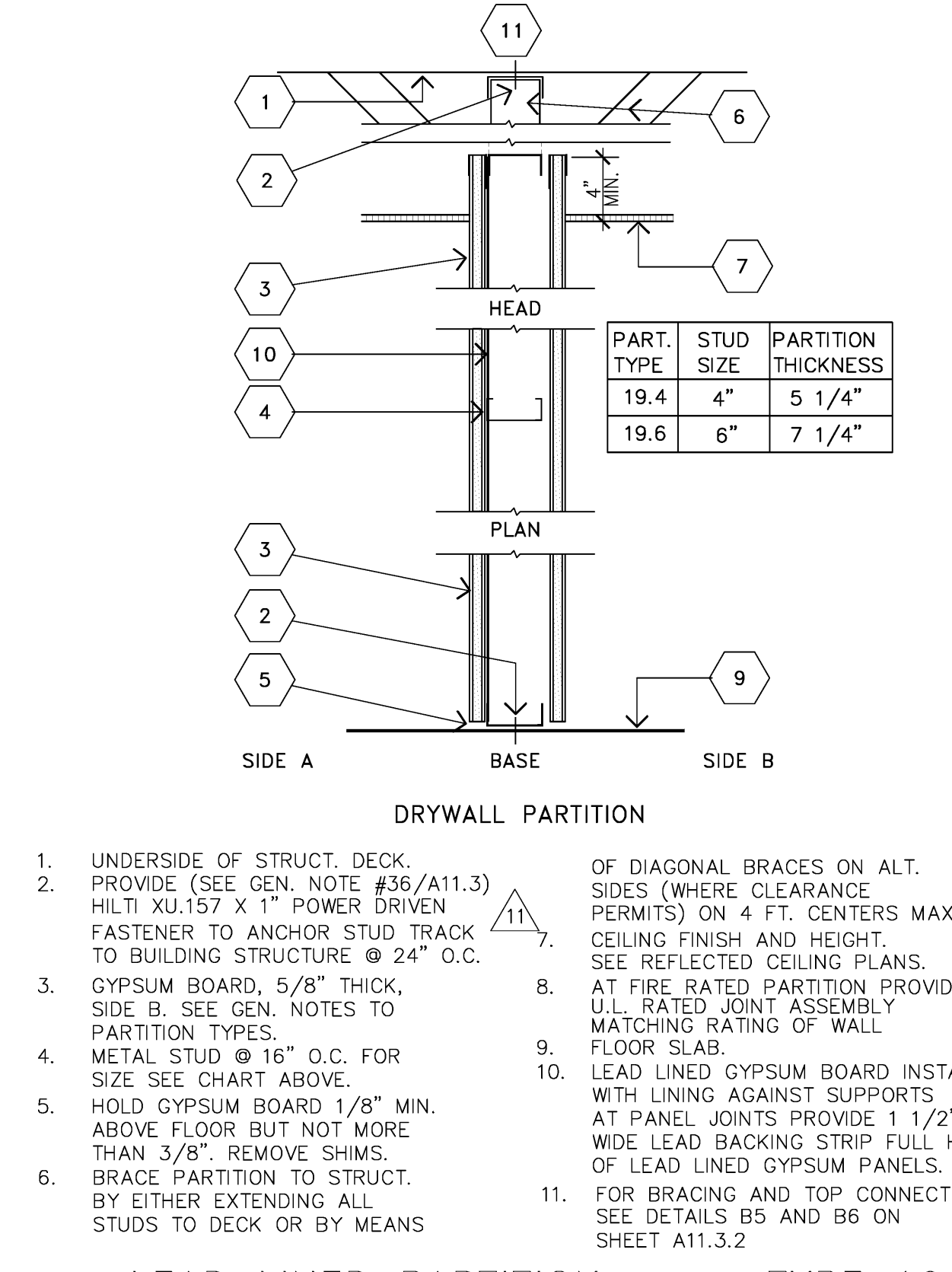
LEAD LINED METAL DOOR FRAME



TRANSPARENT STRIP DOOR @ CART WASH



LEAD LINED PARTITION TYPE 19



LEAD LINED PARTITION TYPE 19