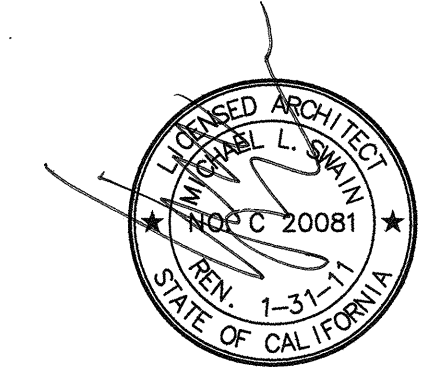


FKP Architects

ARCHITECT OF RECORD
Paul C. Glorford



REVISIONS	DATE	DESCRIPTION
02/05/10	INFORMATION BULLETIN #5	
05/19/10	CHANGE ORDER #25	

APPROVAL
Office of the Registrar
JUN 29 2010
25
CHANGE ORDER #25
INSTRUCTION BULLETIN
DEFERRED APPROVAL
APPROVED

PROJECT NAME
**CHILDREN'S HOSPITAL
OF ORANGE COUNTY**
455 S. Main St.
Orange, CA 92668-3874

TOWER II



PROJECT NUMBER
**12011.00
Increment #7**

OSHPD - PROJECT NUMBER
IL 072072-30

ISSUE
OSHPD PERMIT

DATE
01/27/2010

SCALE

N.T.S.
DRAWING TITLE

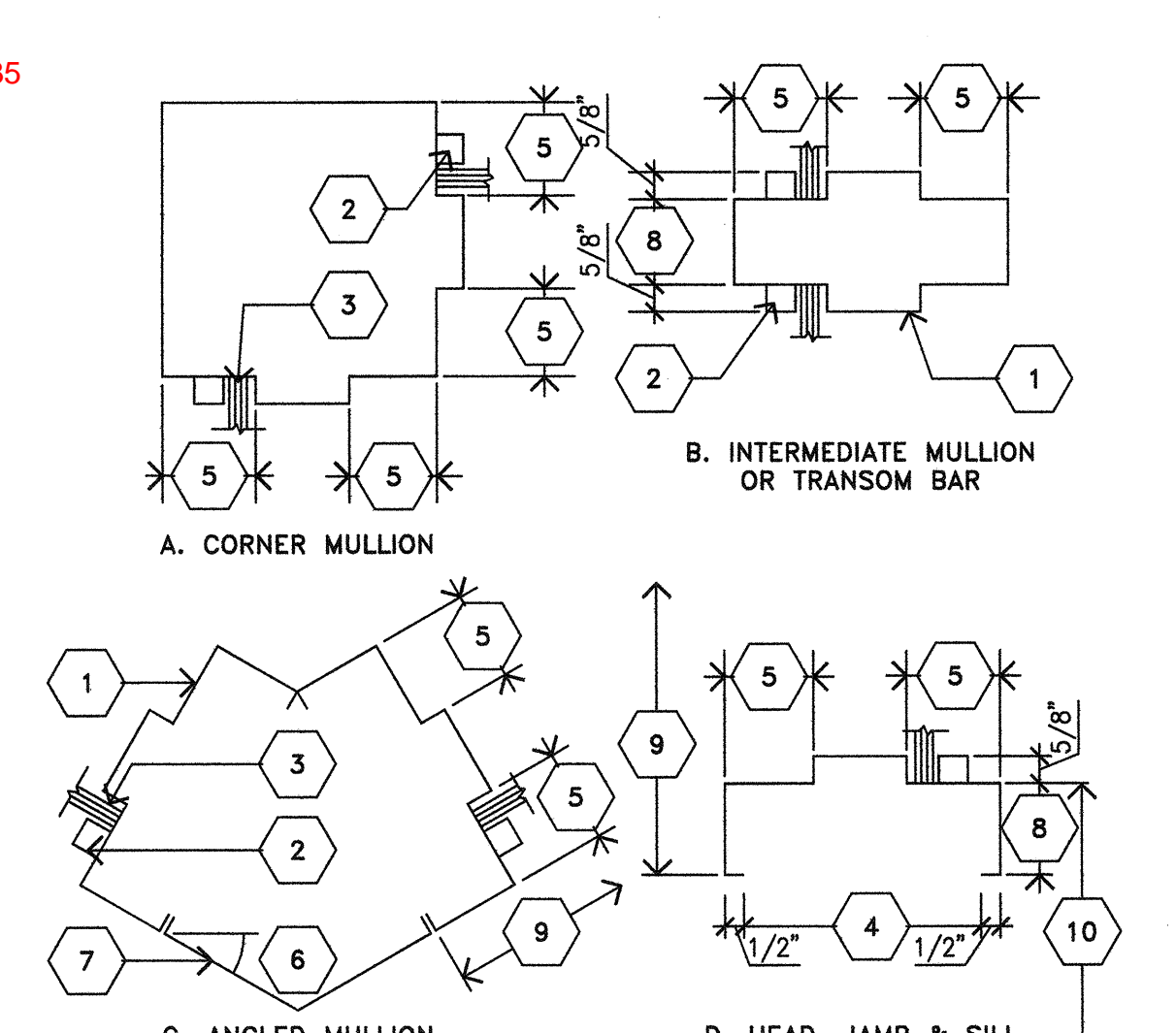
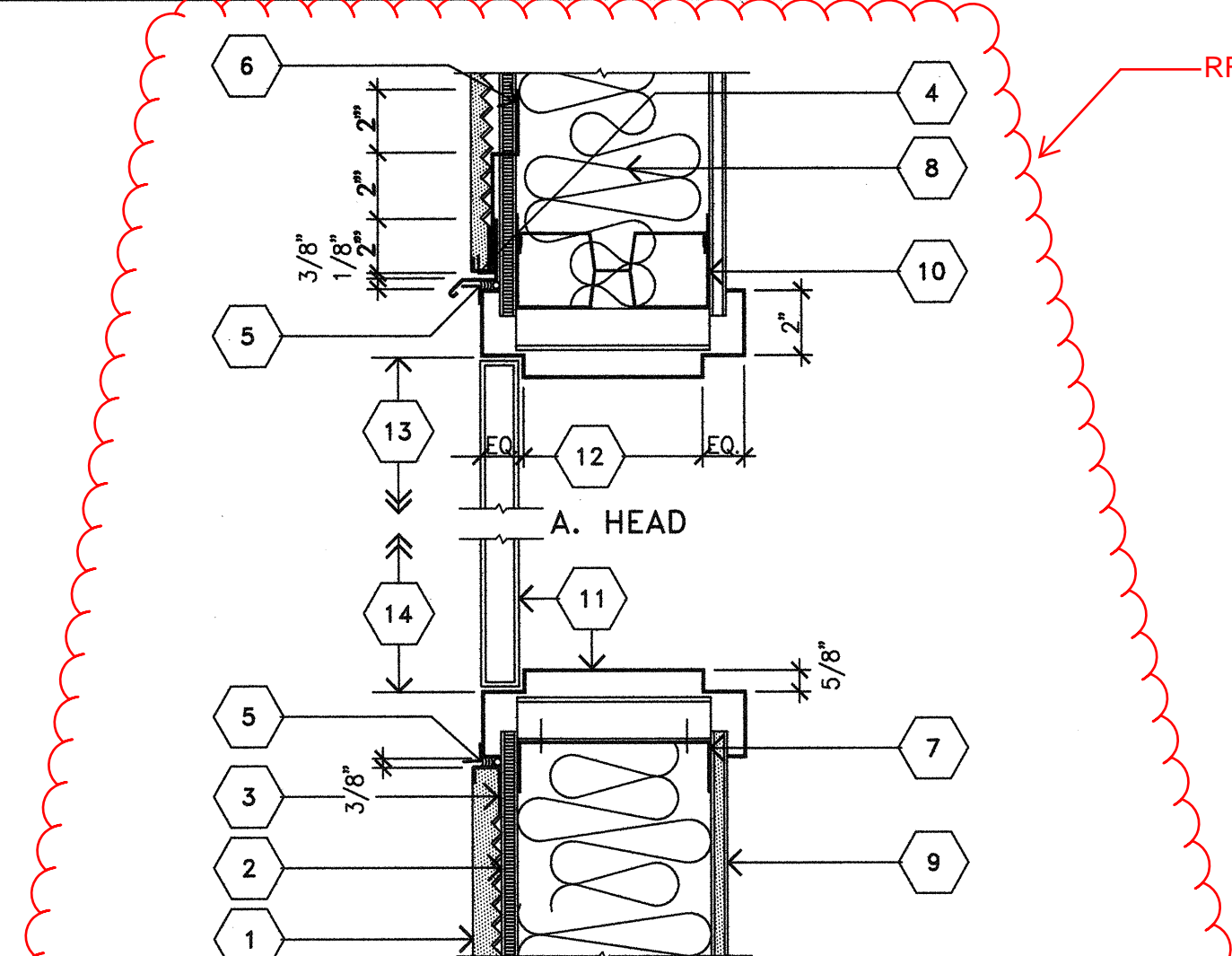
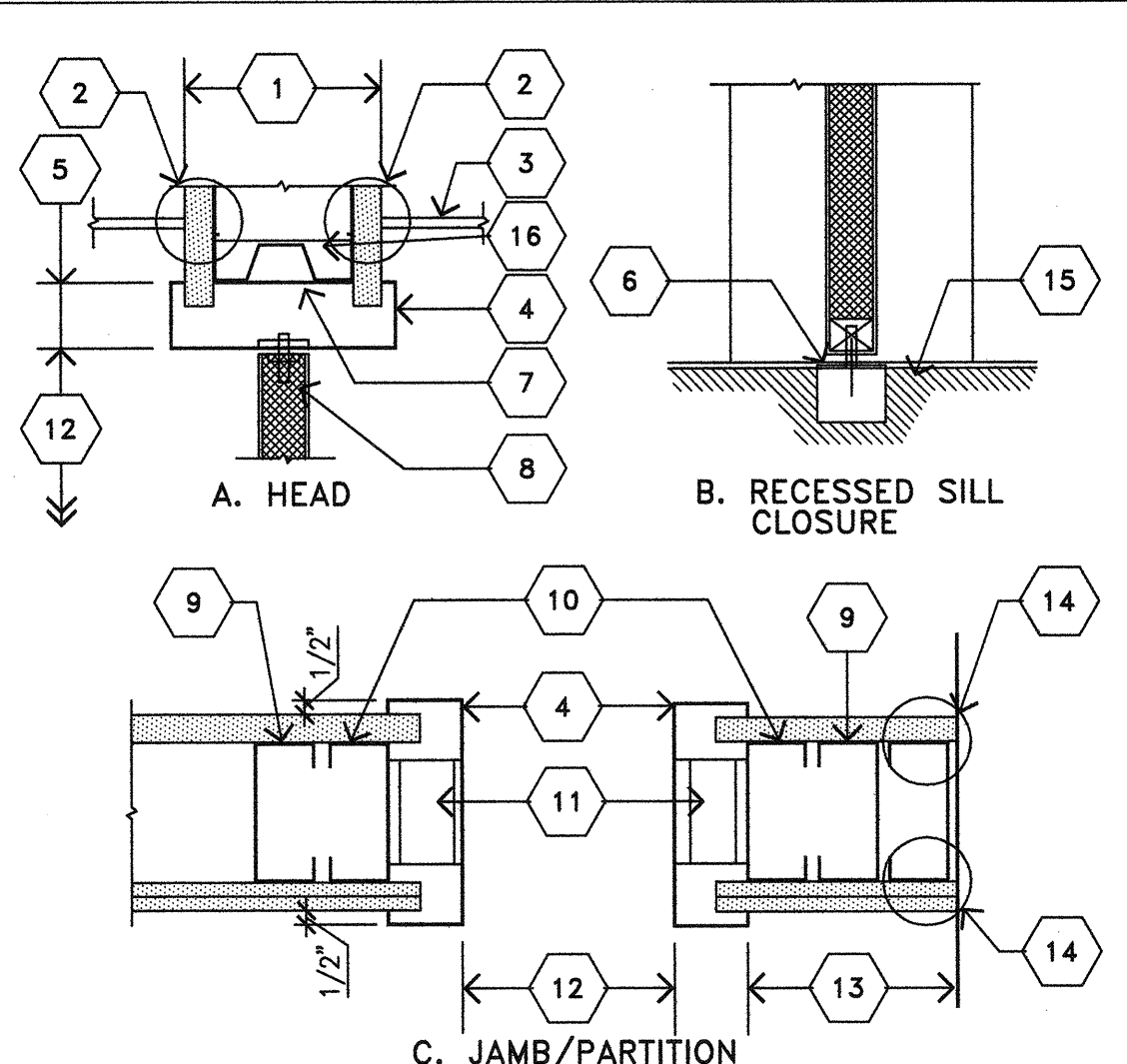
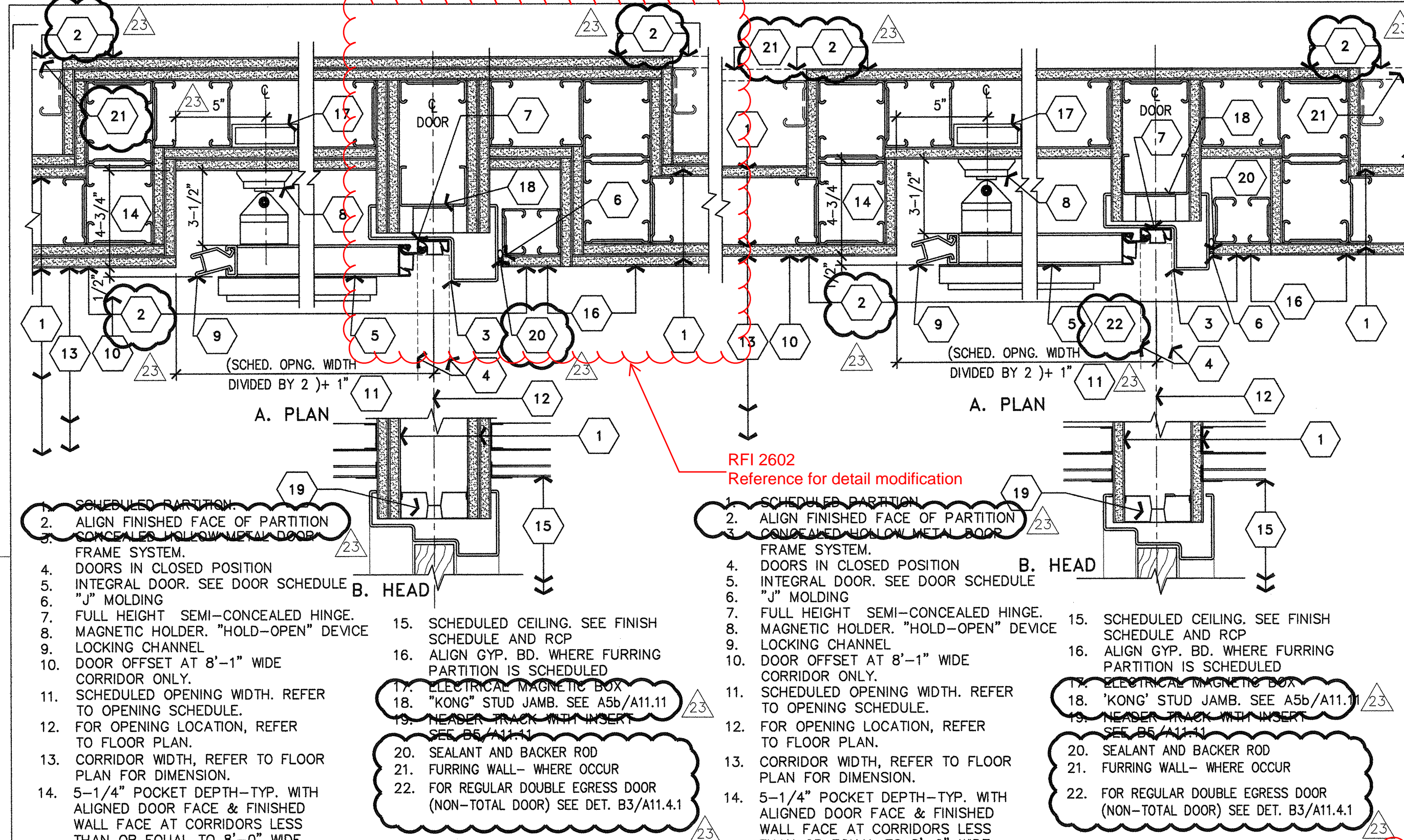
OPENING DETAILS

DRAWING NUMBER

A11.4

© 2009 FKP Architects, Inc. All rights reserved. No part of this document may be reproduced or utilized in any form without prior written authorization of FKP Architects, Inc.

RFI 2437
alternate connection of slamming stud at
no rated to rated connection



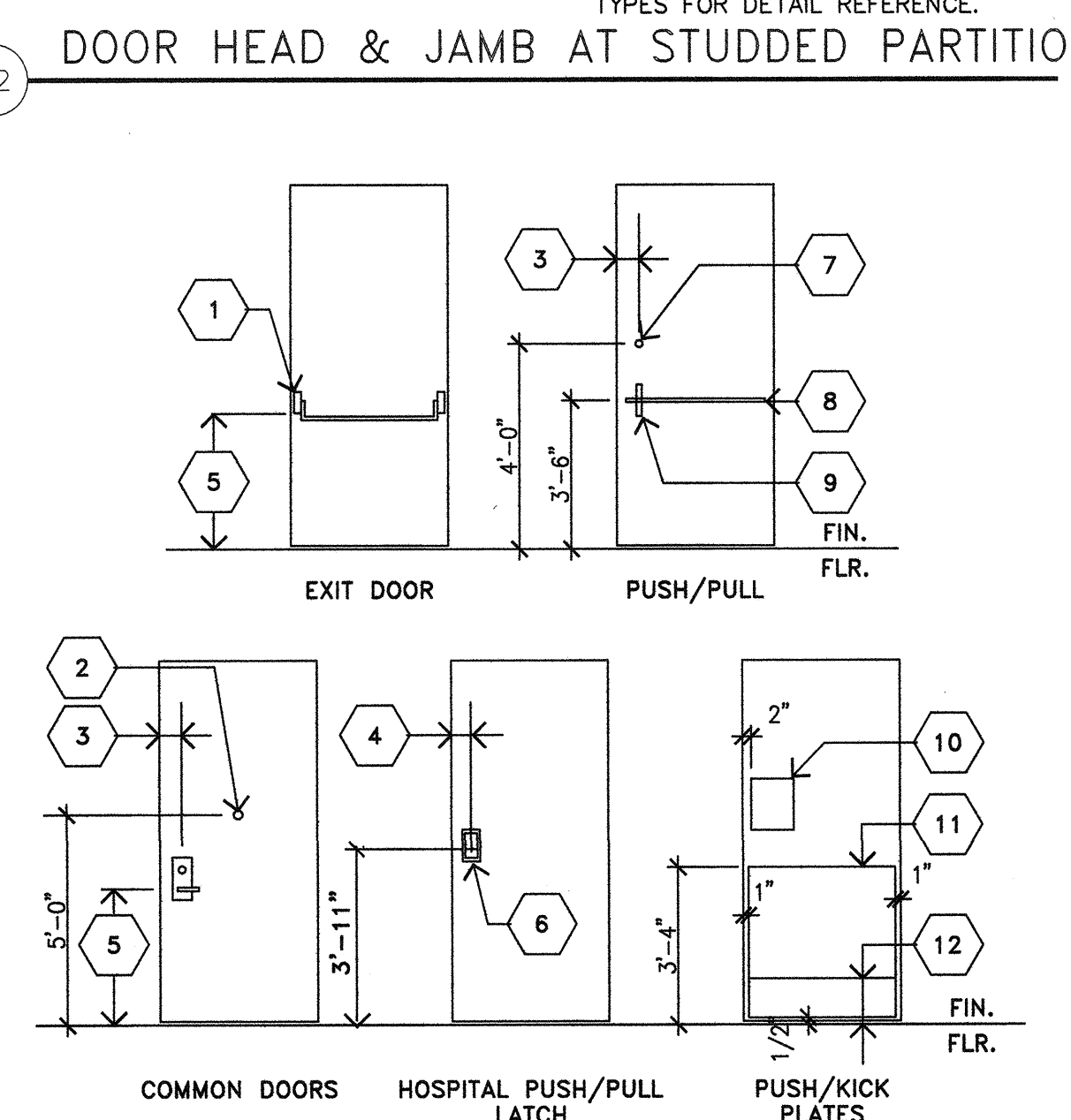
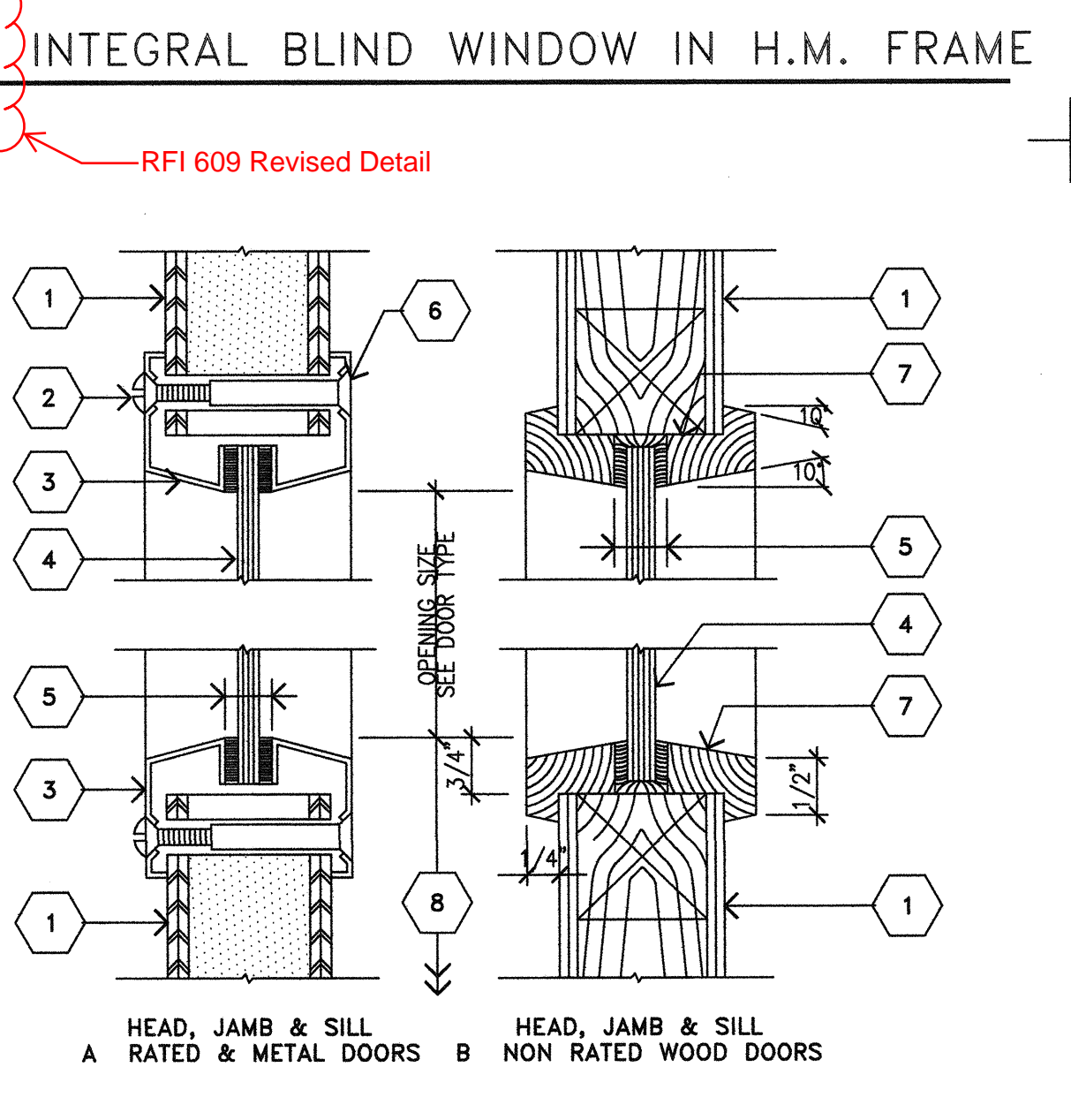
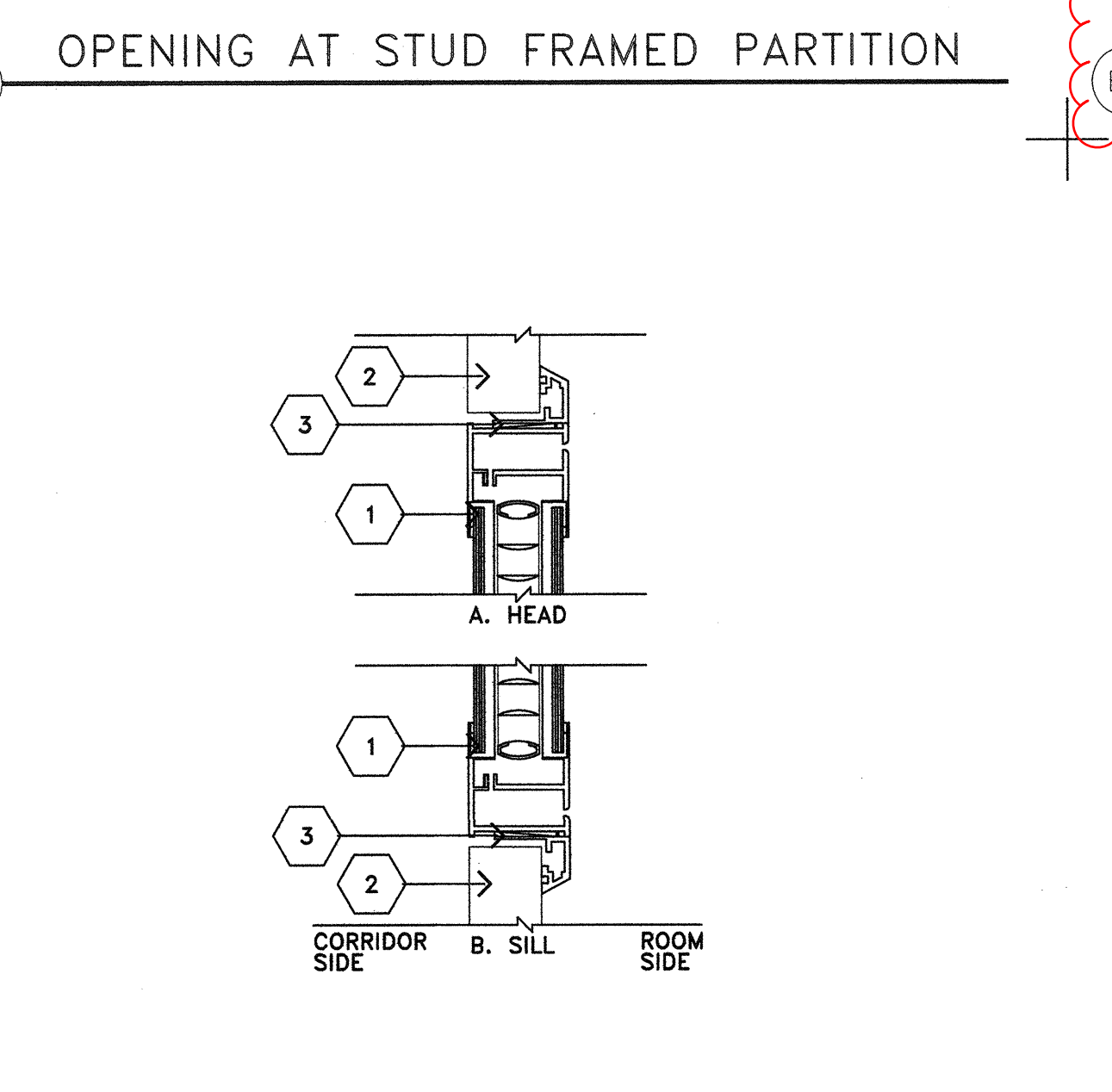
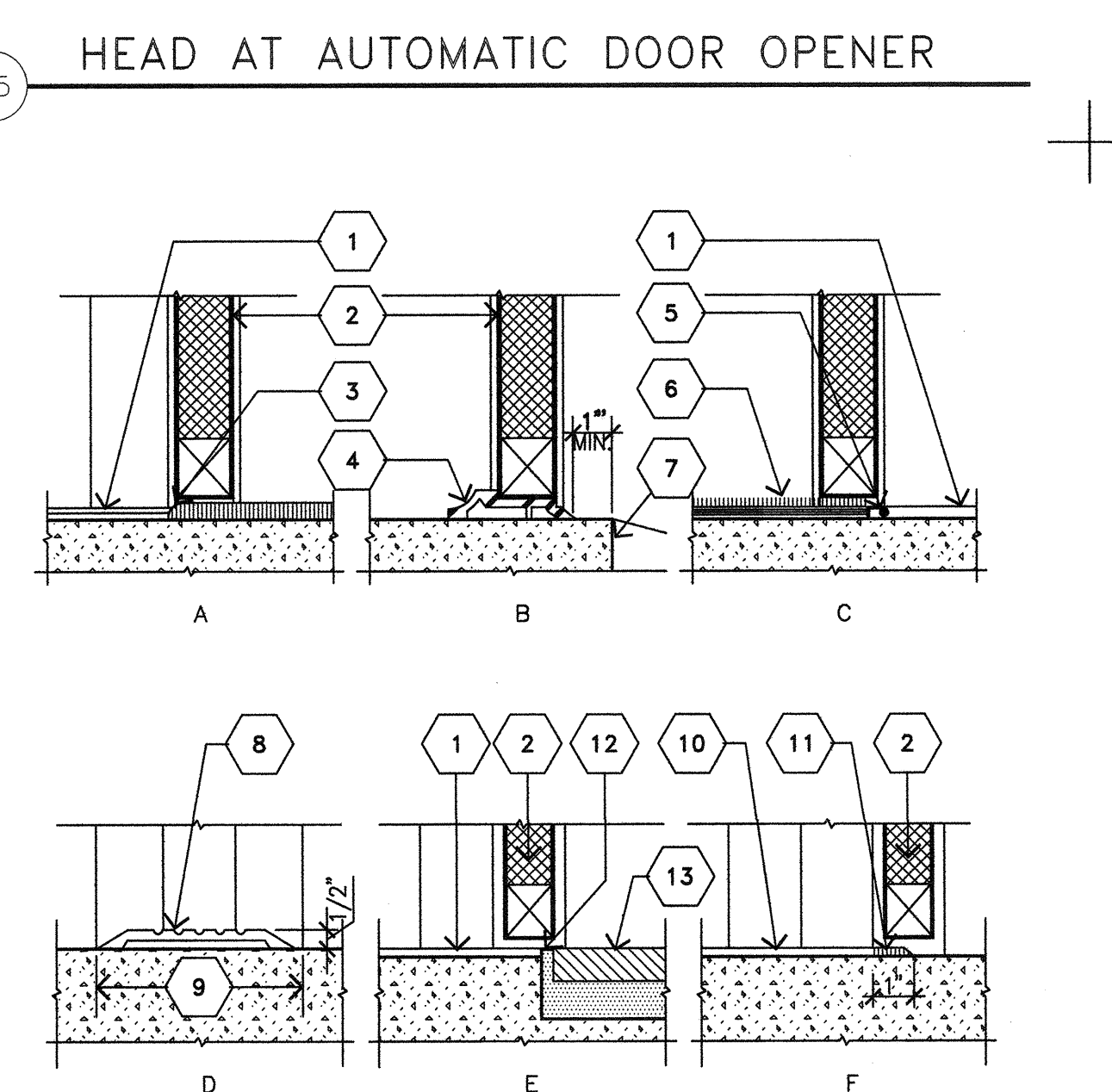
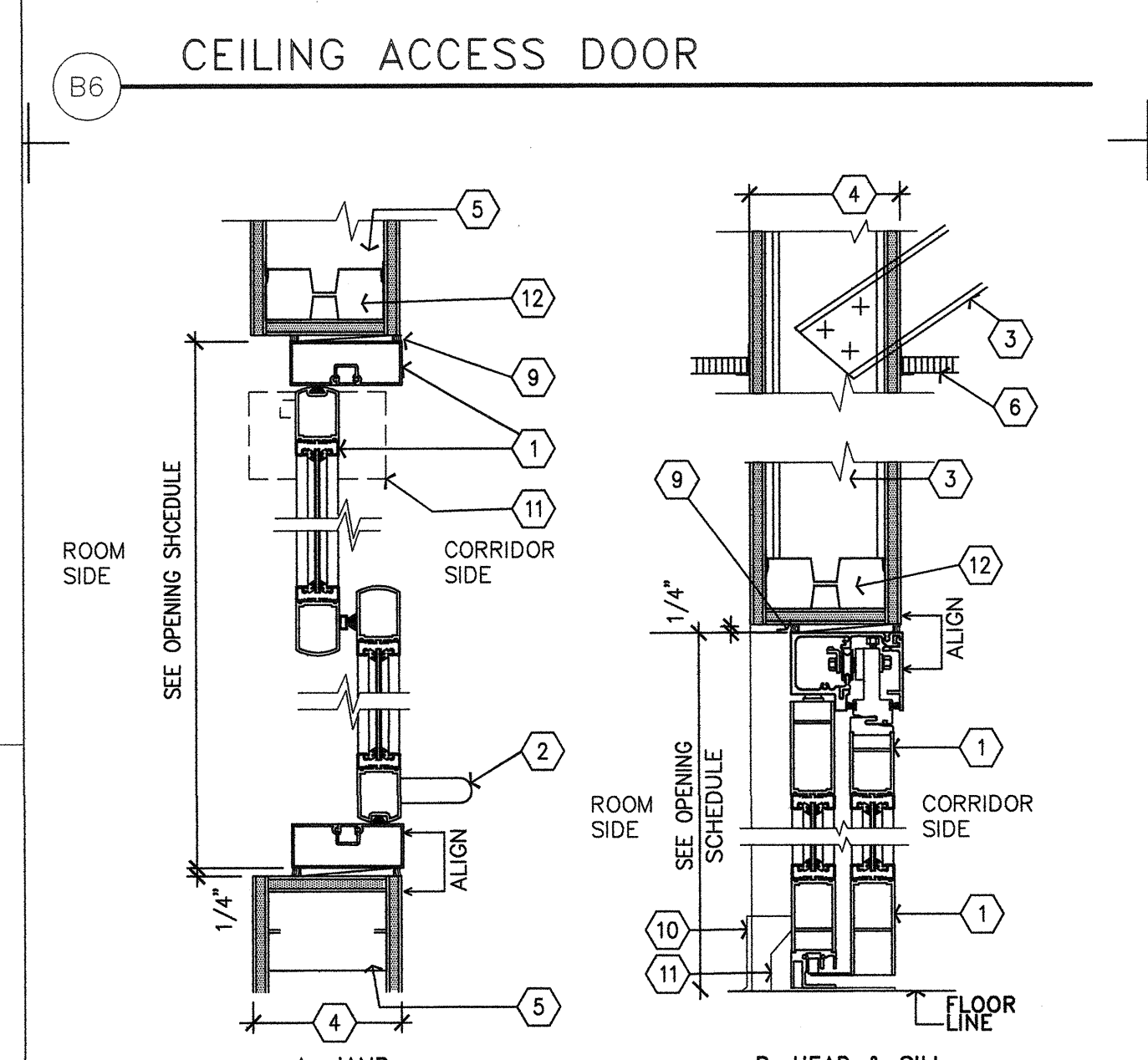
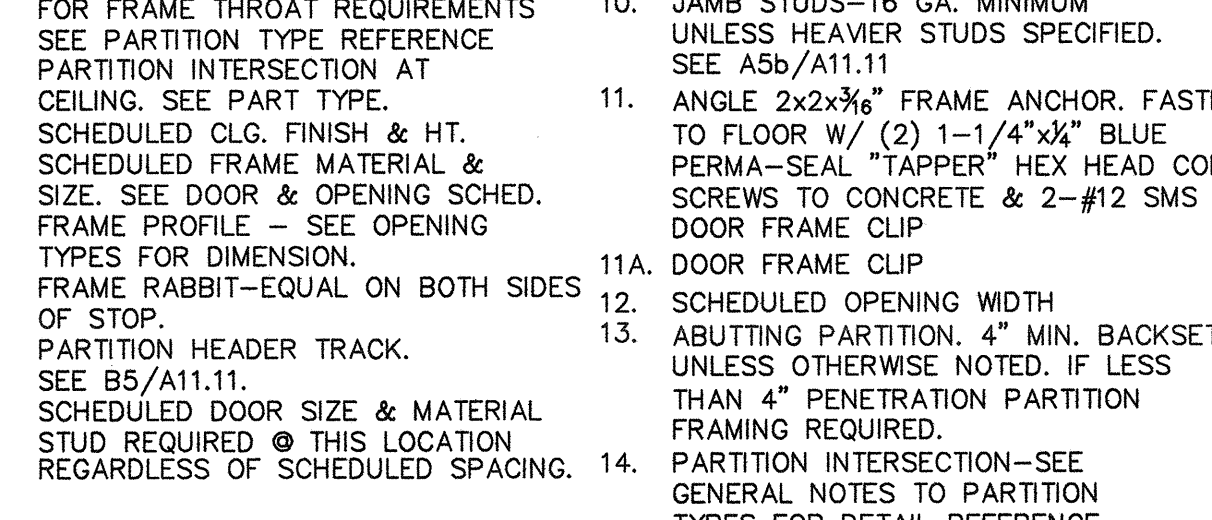
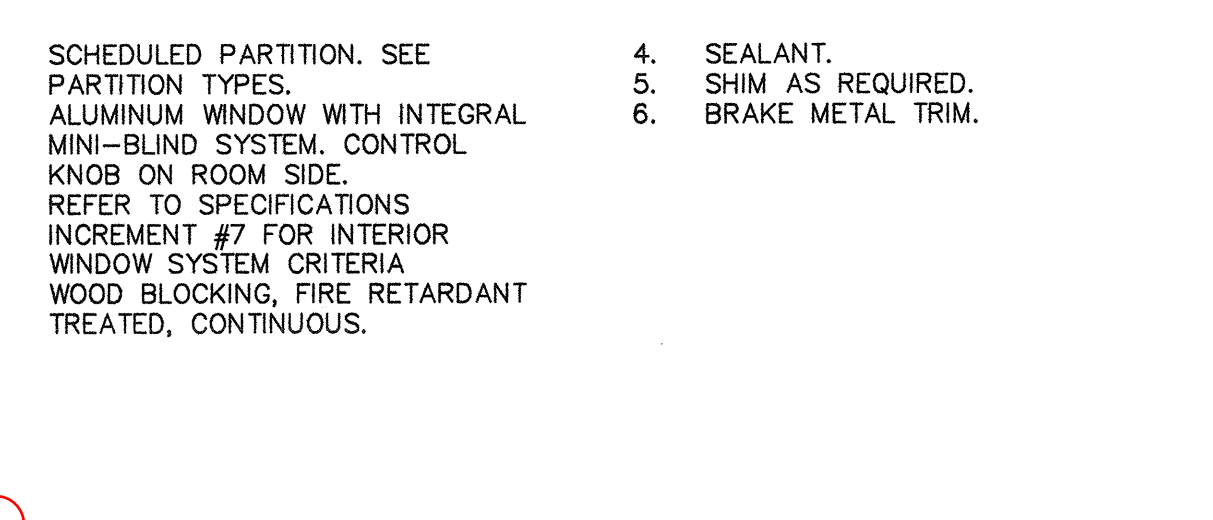
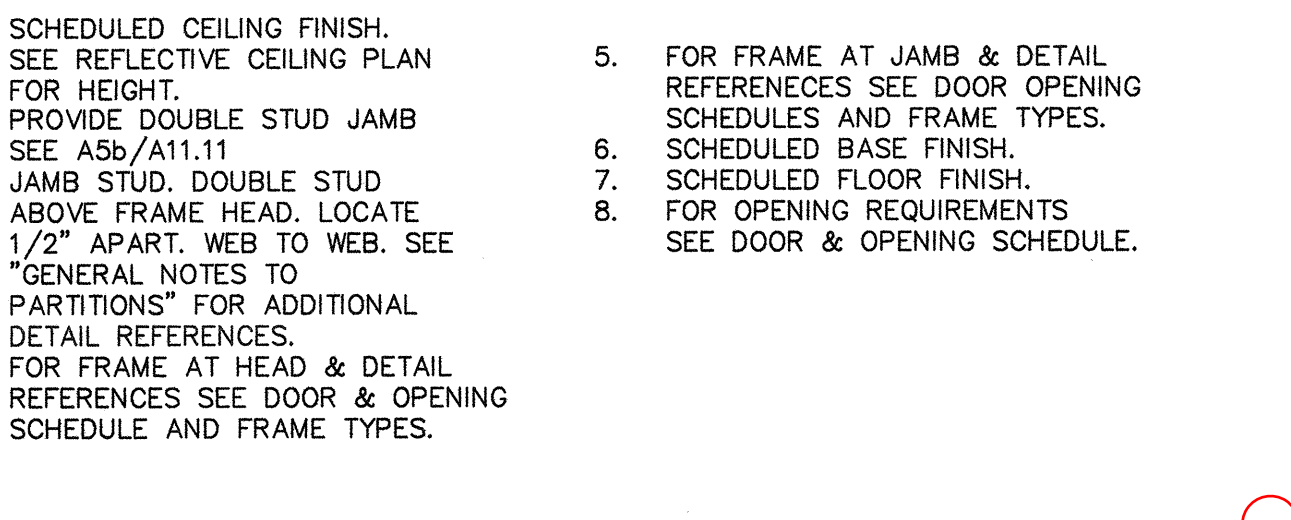
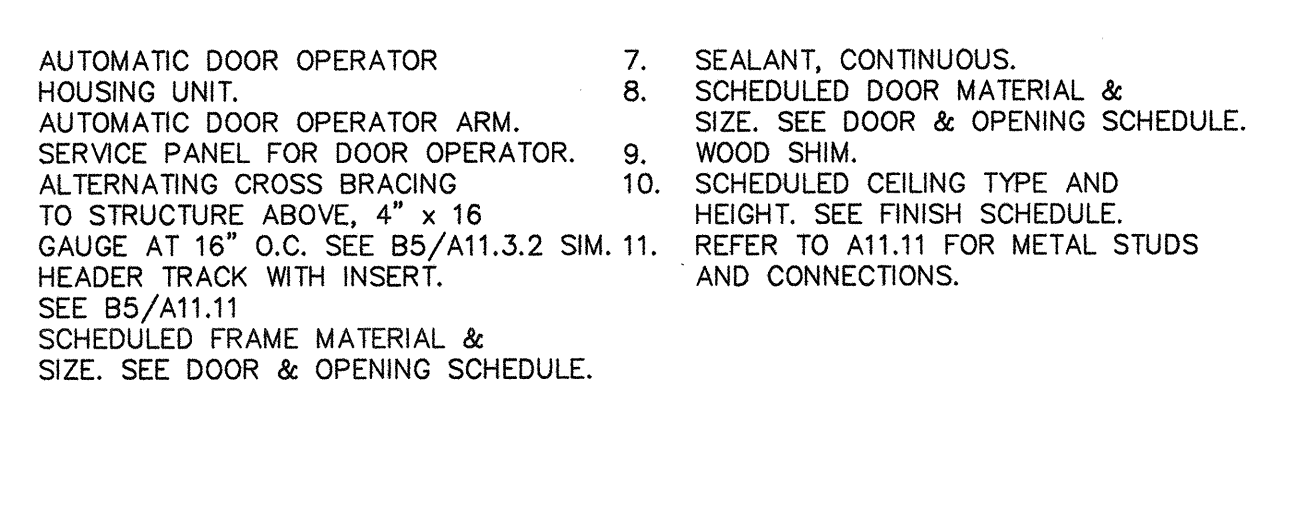
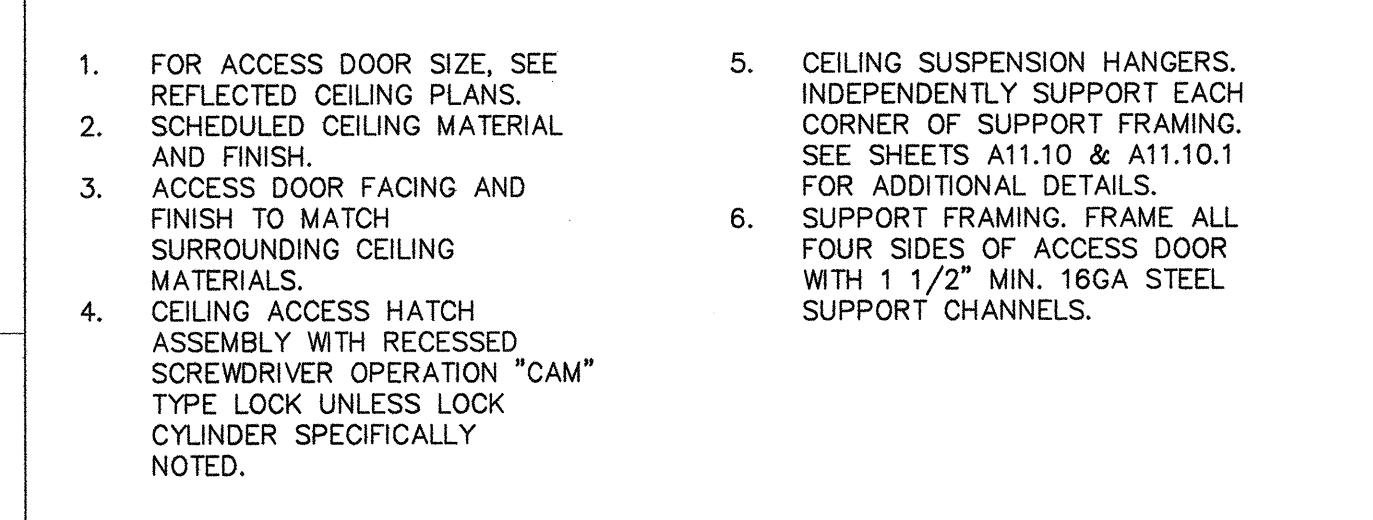
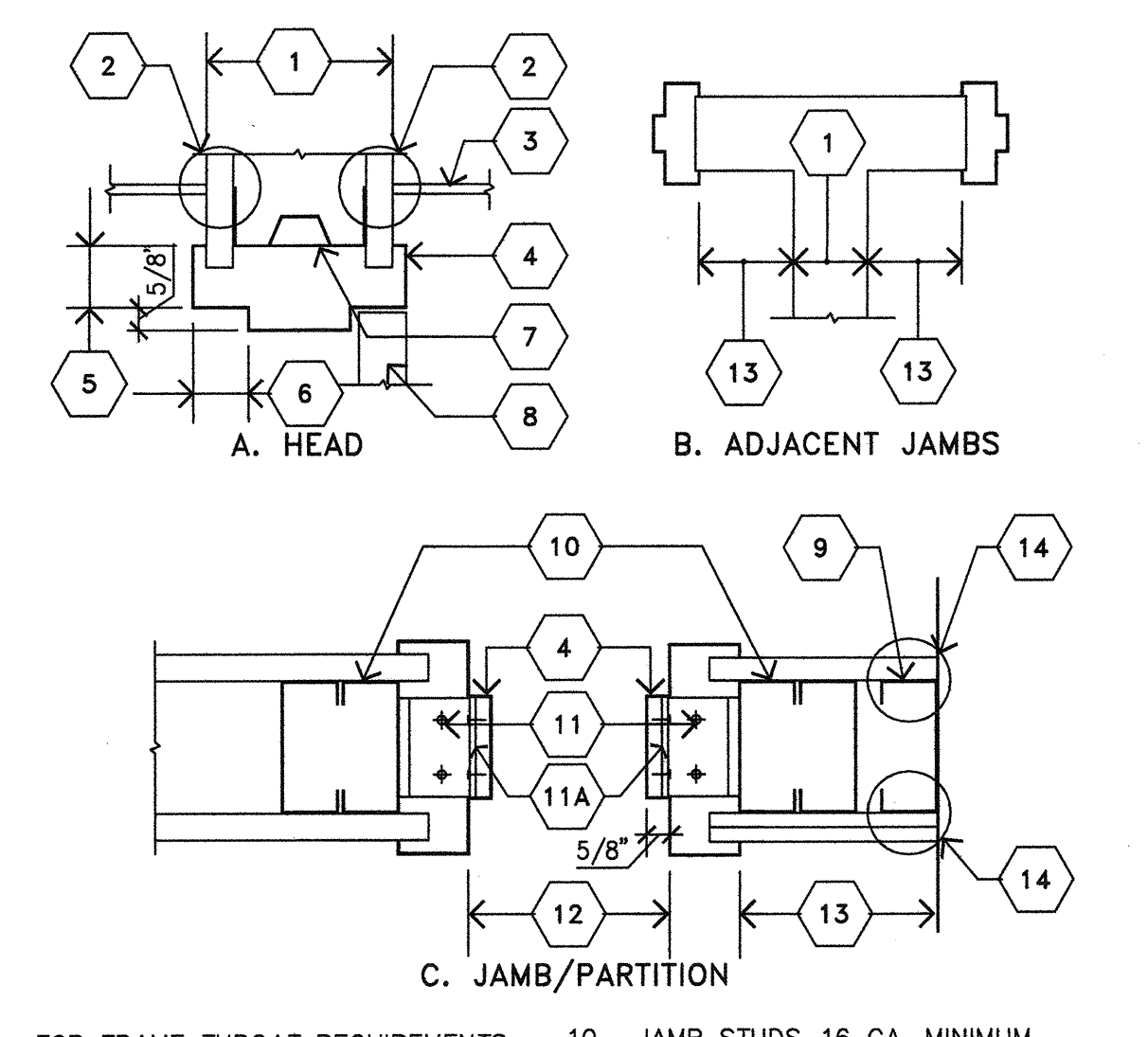
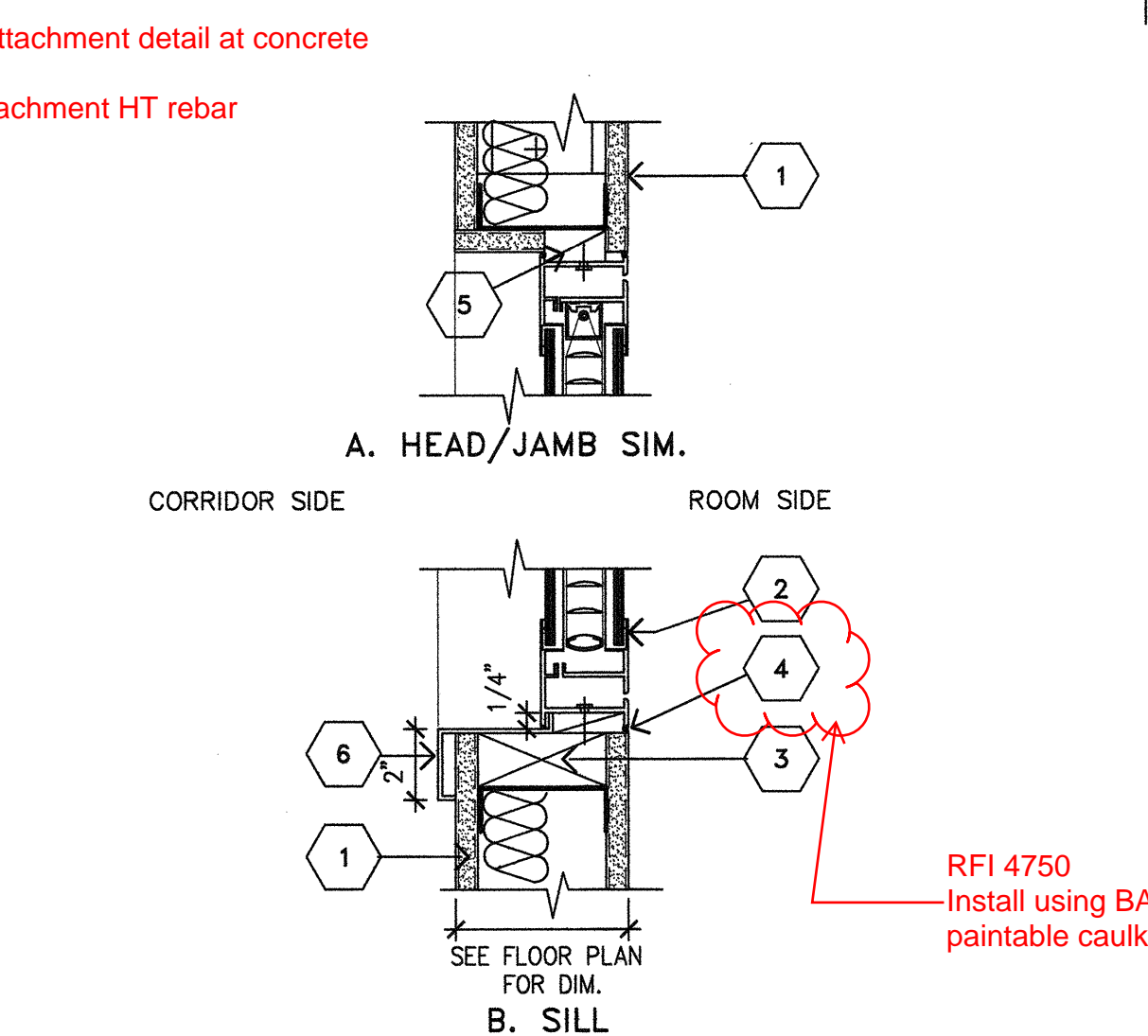
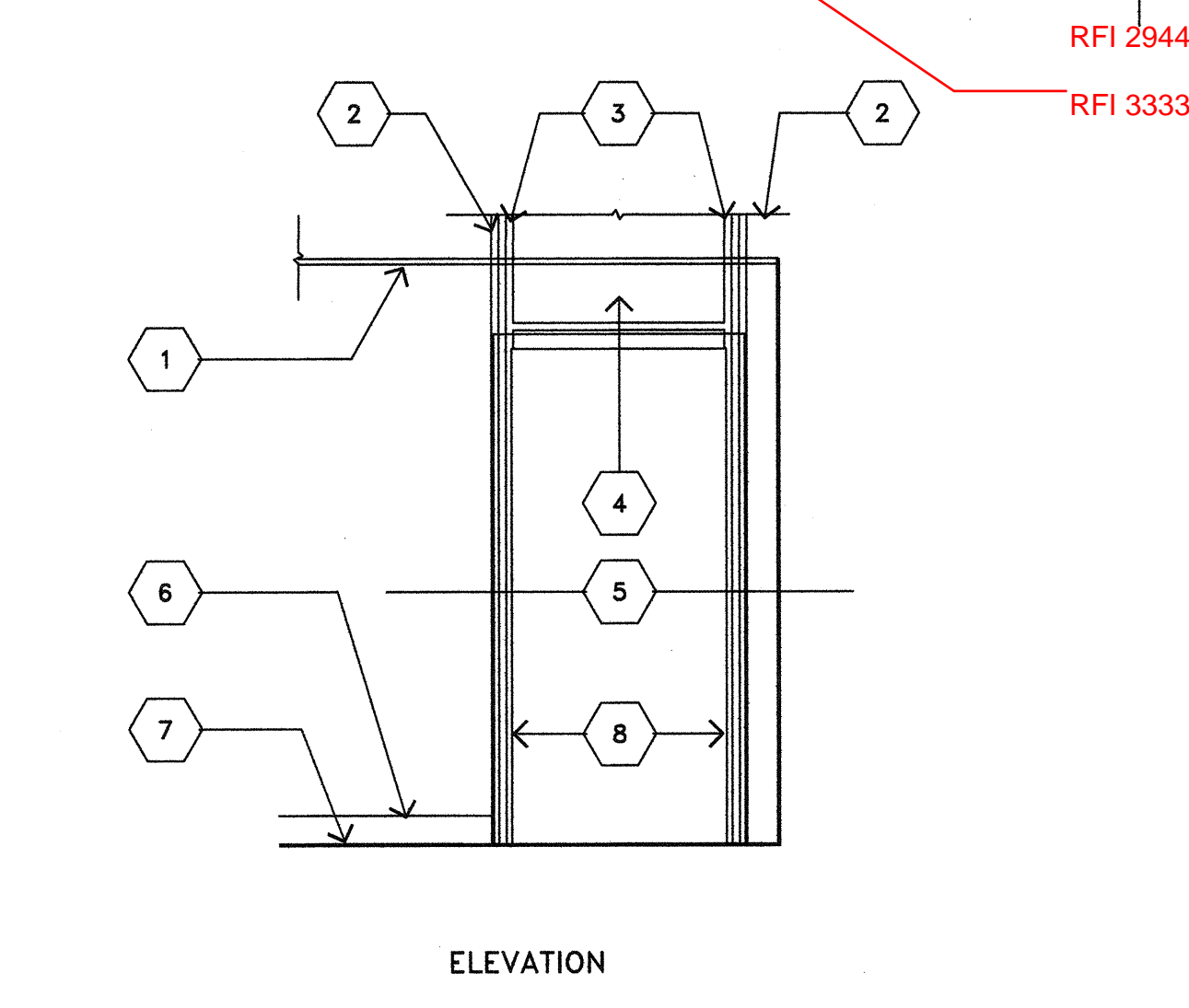
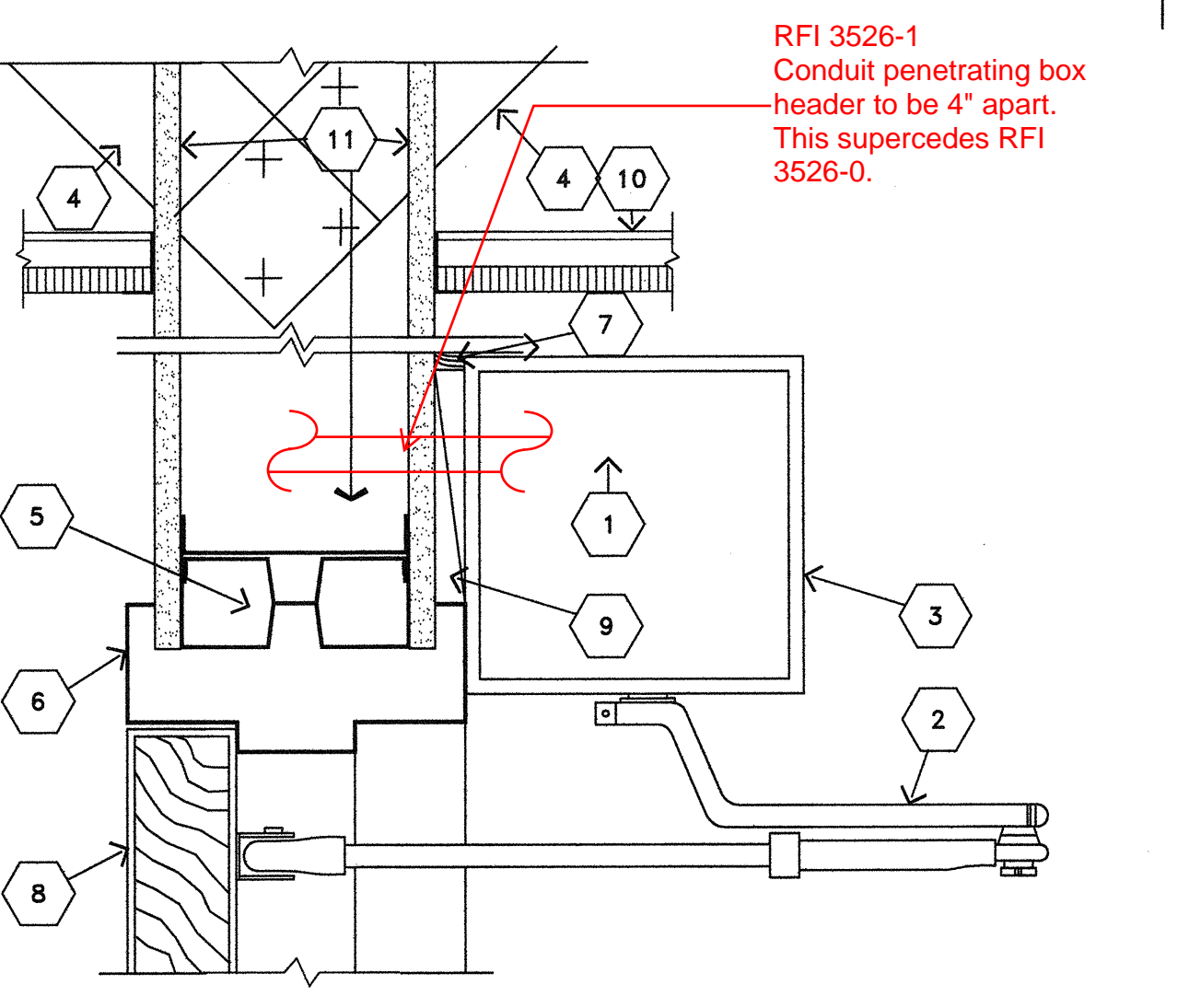
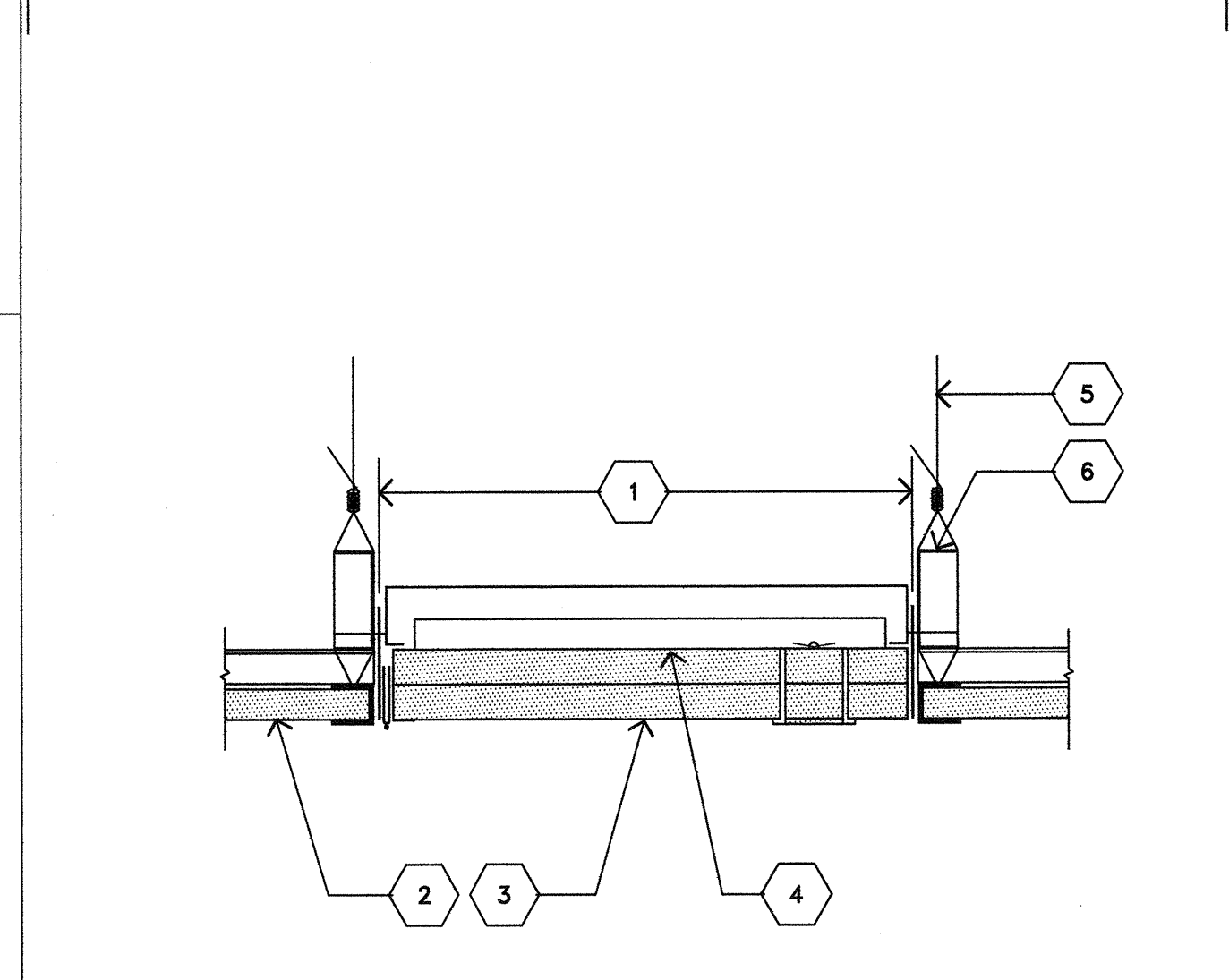
D6 DOUBLE EGRESS INTEGRATED DOOR (2 HOUR)

D5 DOUBLE EGRESS INTEGRATED DOOR (1 HOUR)

D4 DUAL ACTING HOLLOW METAL DOOR FRAME

D3 HOLLOW METAL FRAME AT PLASTER WALL

D2 HOLLOW METAL FRAME DETAILS-FIXED GLASS



A6 TRACKLESS BREAKAWAY SLIDING GLASS ICU DOOR

A5 DOOR SILLS

A4 INTEGRAL BLIND WINDOW IN DOOR

A3 DOOR GLAZING STOPS

A2 DOOR HARDWARE MTG. HTS.

\\MSA-005\B\CA\SERVER\6000\6002\CHOC TOWER 2 SHELL BUILDING\VP CONTRACTED PROJECTS\PROJECT INCREMENTS\INC. #7_TOWER IMPROVEMENT\OSHPD PERMIT (CONSTRUCTION DOCUMENTS)\00412_C01#4 & AS#8 (RFI RESPONSES)\A11.4.DWG
6/7/2010
ROWLD