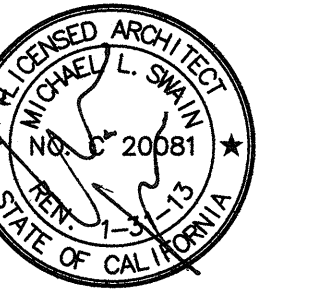


FKP Architects

ARCHITECT OF RECORD  
Paul C. Gloriot



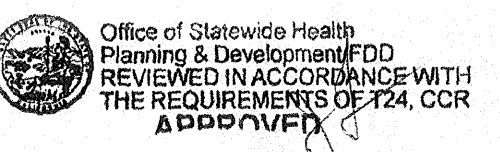
Changes on these drawings do not consist of  
materially altered changes to approved drawings  
and don't require a change order.  
OSHPD review ACO  
OSHPD review FLSO  
OSHPD review DSE

REVISIONS

317	08/22/11	CO#247
329	09/19/11	CHANGE ORDER #257
389	12/23/11	AS#131
371	10/26/11	CO#289
338	02/06/12	CO#328

OSHPD/FDD-Field Tracking	
Project	PAD: 2010-0204
ACO	ACO: 2010-0204
Architect	(A) ACO (X) Ruler
Electrical	(A) ACO (X) Ruler
Structural	(A) ACO (X) Ruler
FLSO	(A) ACO (X) Ruler
Fire/Life Safety	(A) ACO (X) Ruler

APPROVAL



CHANGE ORDER #257  
INSTRUCTION BULLETIN  
DEFERRED APPROVAL  
10/26/11

PROJECT NAME

**CHILDREN'S HOSPITAL  
OF ORANGE COUNTY**  
455 S. Main St.  
Orange, CA 92668-3874

TOWER II



PROJECT NUMBER

**12011.00  
Increment #7**

OSHPD - PROJECT NUMBER

**IL 072072-30**

ISSUE

**OSHPD PERMIT**

DATE

**01/27/2010**

SCALE

N.T.S.

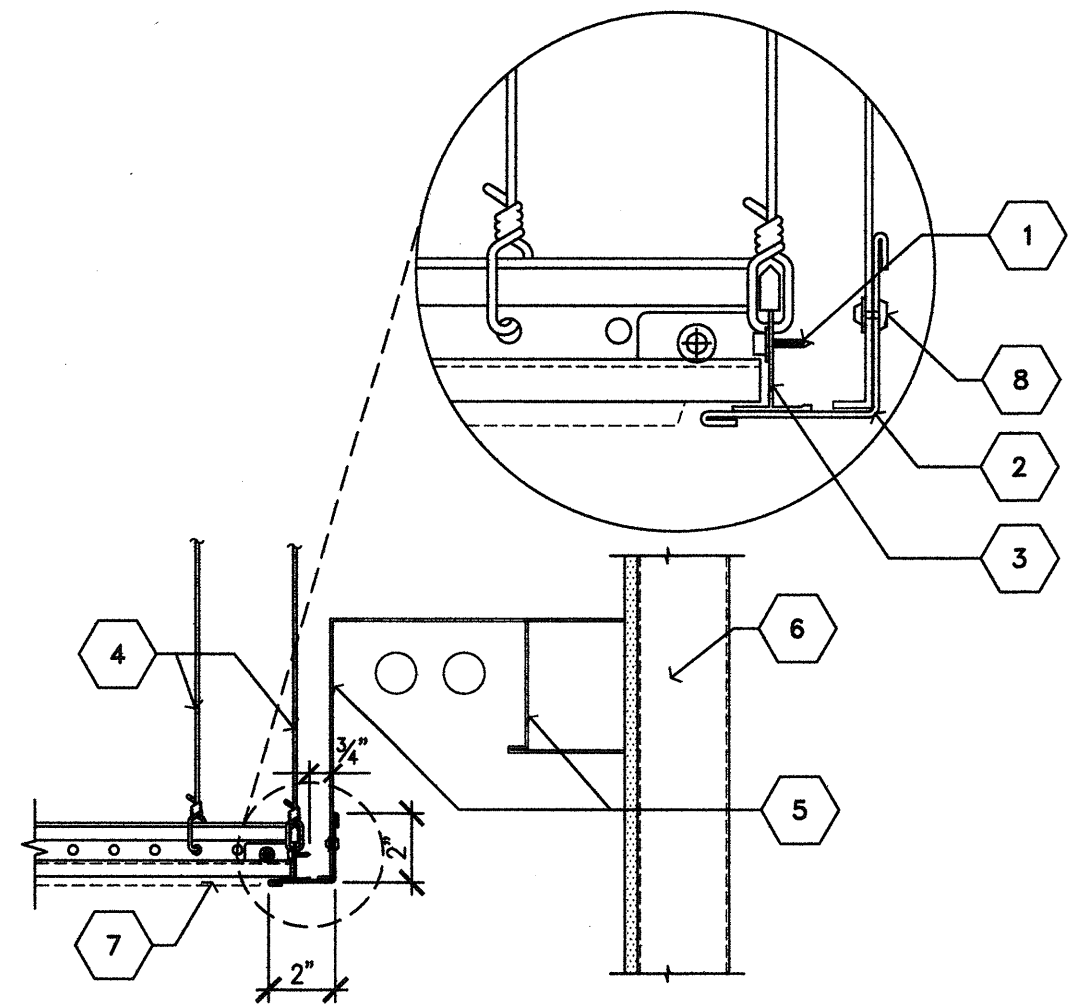
DRAWING TITLE

**INTERIOR SEISMIC  
DETAILS AND MISC.  
DETAILS**

DRAWING NUMBER

**A11.6.1**

317  
CO#247

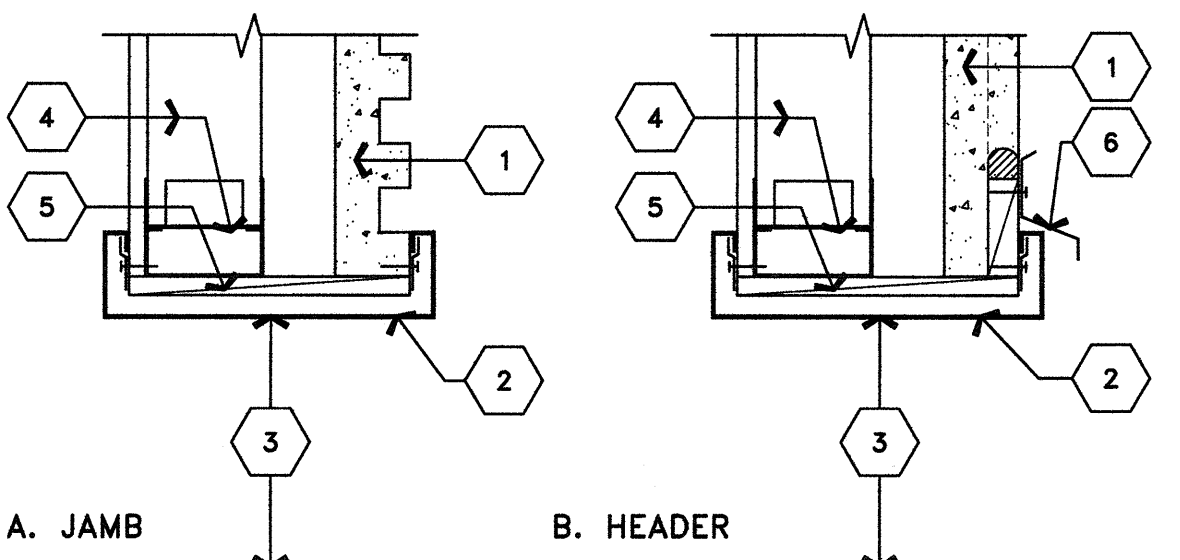


1. ATTACHED EACH GRID RUNNER  
END TO THE SLIP MAIN USING A  
3/4"x20 GA STEEL ATTACHMENT  
ANGLE AND #8x2" SHEET METAL  
SCREWS.
2. 2"x2" WALL ANGLE W/ HEMMED  
EDGES & PREFINISHED
3. 1/4" SLIP MAIN RUNNER
4. 12 GA. PERIMETER WIRE WITH 3  
TIGHT TURNS IN 1 1/2" BOTH ENDS  
OF WIRE TYPICAL
5. LINEAR FIXTURE
6. SCHEDULED PARTITION
7. SCHEDULED CEILING FINISH. SEE  
REFLECTIVE CEILING PLAN FOR  
HEIGHT.
8. POP RIVET @ 24" O.C.

**T-BAR CEILING WITH TEGULAR TILE INSTALLATION  
AT LINEAR FIXTURE ALONG CORRIDOR**

338  
CO#328

317  
CO#289



- A. JAMB**
1. (E) GFR WALL PANEL SYSTEM.  
SEE D1/S6.40 FOR STRUCTURAL  
OPENING DETAIL.
  2. METAL CASING- SNAP-ON  
SYSTEM. PAINT
  3. OPENING
  4. SEE A1, B1, B2/S6.40 FOR STUD  
TO PANEL CONNECTION DETAIL
  5. SPACING BLOCK
- B. HEADER**
6. METAL DRIP/ DRAIN AT  
OVERHEAD OPENING. PROVIDE  
SPACER IN BETWEEN GFR  
GROOVES AND CAULKING.

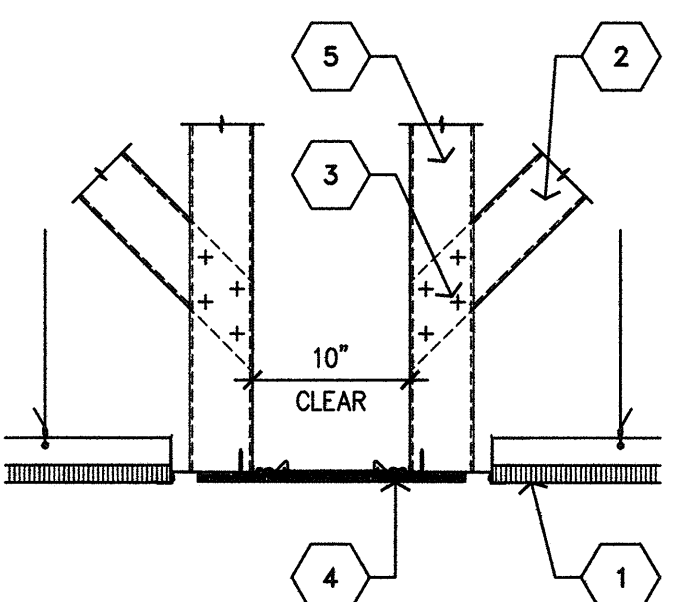
**SECTION DET. AT NORTH TOWER EXTERIOR WALL  
OPENING**

RFI 5436

**A. HANDRAIL ATTACHMENT  
AT CONCRETE PAD**

1. PIPE HANDRAIL BALUSTER, 1 1/2" O.D.  
MAX.
2. CONCRETE PAD.
3. STEEL IMBED ANGLE, 3"x3"x1/4" W/  
MIN (3) 1/2"x4" HEADED NELSON  
STUDS.
4. 1/4" THICK KNIFE PLATE WELDED TO  
STEEL IMBED ANCHOR. NOTCH  
BALUSTER AND WELD FULL LENGTH  
OF NOTCH EACH SIDE.
5. STRUCTURAL CONCRETE AND METAL  
DECK
6. 1 1/2"x6" DEEP CORE.
7. FULLY GROUT PIPE HANDRAIL  
BALUSTER.
8. CONCRETE RAMP

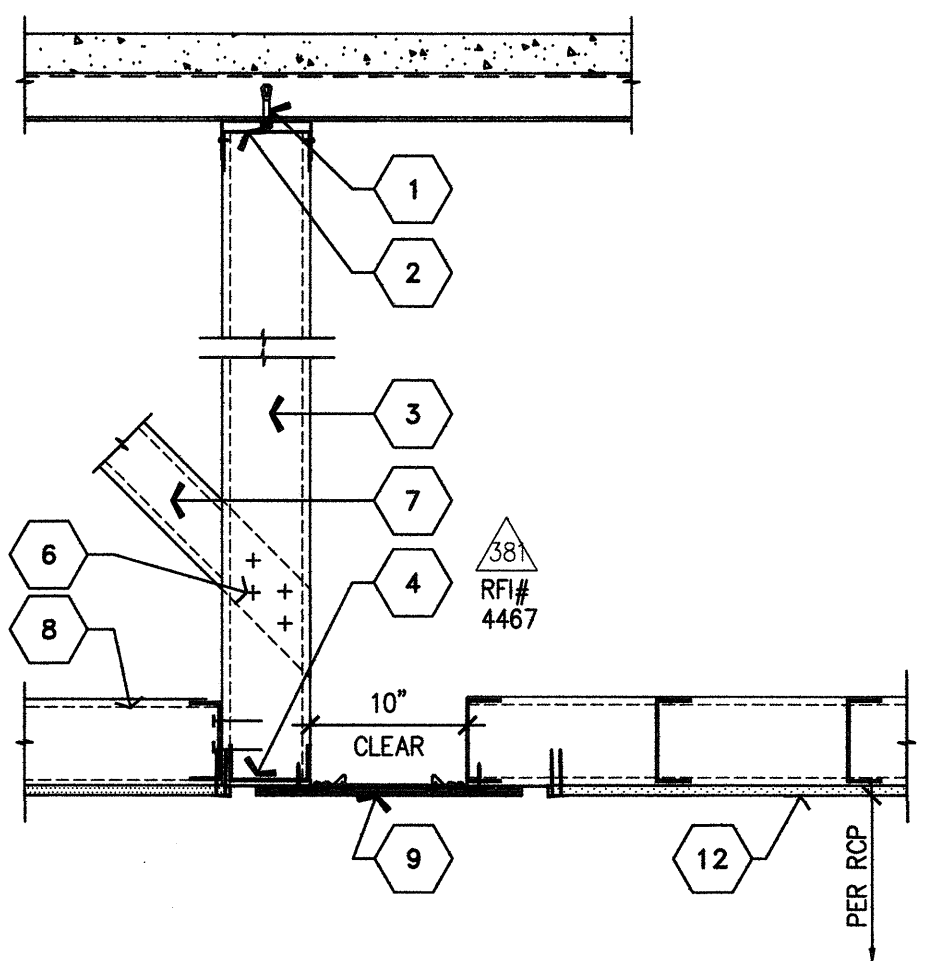
389  
AS#131



1. SCHEDULED CEILING FINISH. SEE  
REFLECTIVE CEILING PLAN FOR  
HEIGHT.
2. DIAGONAL BRACING TO DECK AT  
48" STAGGERED CENTERS MAX.
3. (4) #8 SMS.
4. 10" CEILING EXPANSION JOINT  
ASSEMBLY. FOR WIDTH SEE CEILING  
PLANS. ALIGN WITH INTERSECTING  
WALL EXPANSION JOINTS WHERE  
INDICATED. CONTINUOUS, WITH NO  
INTERMEDIATE JOINTS.
5. 400S162-54 STUD AT 16" O.C.

**SECTION DET. AT CEILING EXPANSION JOINT**

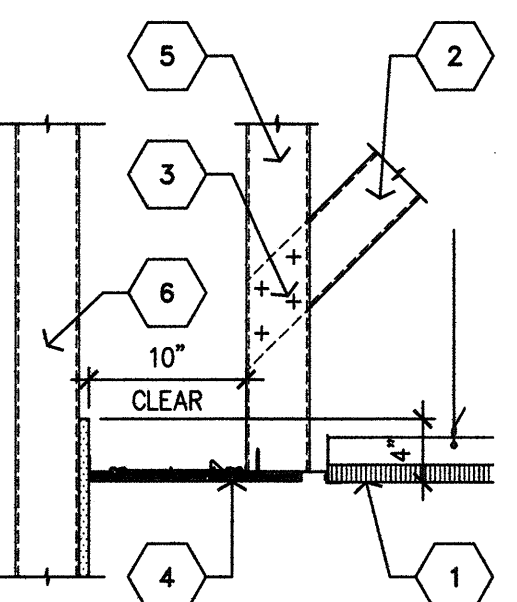
389  
RFI# 4467



1. 1/2" HILTI KBTZ EXPANSION BOLT  
@ 48" O.C.
2. 4" SLIP TRACK CONT.
3. 400S162-54 STUD AT 16" O.C.
4. 400T125-54 CONT STUD TRACK
5. 250S162-54 BRACE
6. 4- #10 SMS STUD
7. DIAGONAL BRACING TO DECK AT  
48" STAGGERED CENTERS MAX.
8. 250S137-54 SOFFIT STUD AT 16" O.C.
9. 10" CEILING EXPANSION JOINT  
ASSEMBLY. VINYL FACED, FOR  
WIDTH SEE CEILING PLANS. ALIGN  
WITH INTERSECTING WALL  
EXPANSION JOINTS WHERE  
INDICATED. CONTINUOUS, WITH  
NO INTERMEDIATE JOINTS.
10. NOT USED
11. NOT USED
12. SCHEDULED CEILING FINISH.  
SEE FINISH PLAN. AND SEE  
REFLECTIVE CEILING PLAN  
FOR HEIGHT.

**SECTION DET. AT CEILING EXPANSION JOINT**

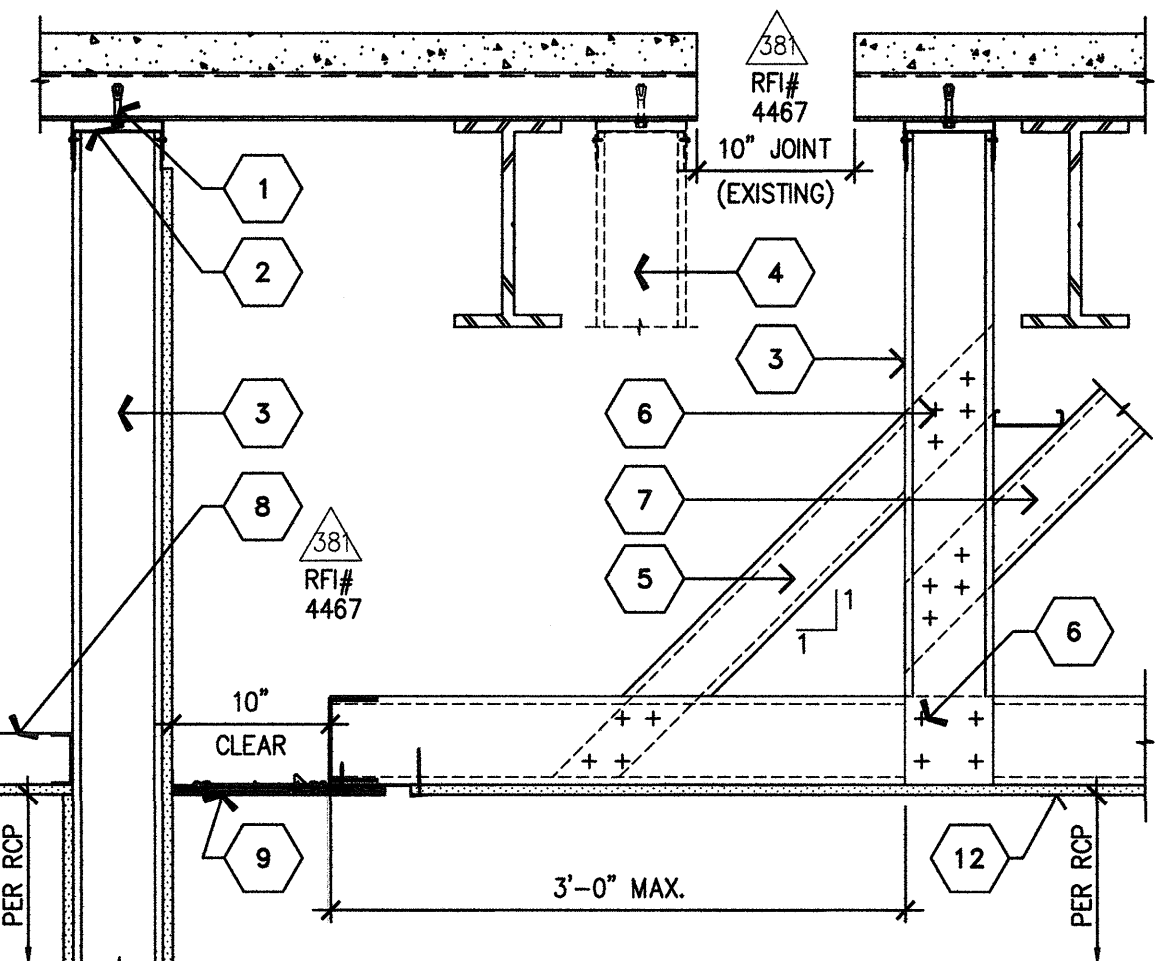
389  
RFI# 4467



1. SCHEDULED CEILING FINISH. SEE  
REFLECTIVE CEILING PLAN FOR  
HEIGHT.
2. DIAGONAL BRACING TO DECK AT  
48" STAGGERED CENTERS MAX.
3. (4) #8 SMS.
4. 10" CEILING EXPANSION JOINT  
ASSEMBLY. FOR WIDTH SEE CEILING  
PLANS. ALIGN WITH INTERSECTING  
WALL EXPANSION JOINTS WHERE  
INDICATED. CONTINUOUS, WITH NO  
INTERMEDIATE JOINTS.
5. 400S162-54 STUD AT 16" O.C.

**SECTION DET. AT CEILING EXPANSION JOINT**

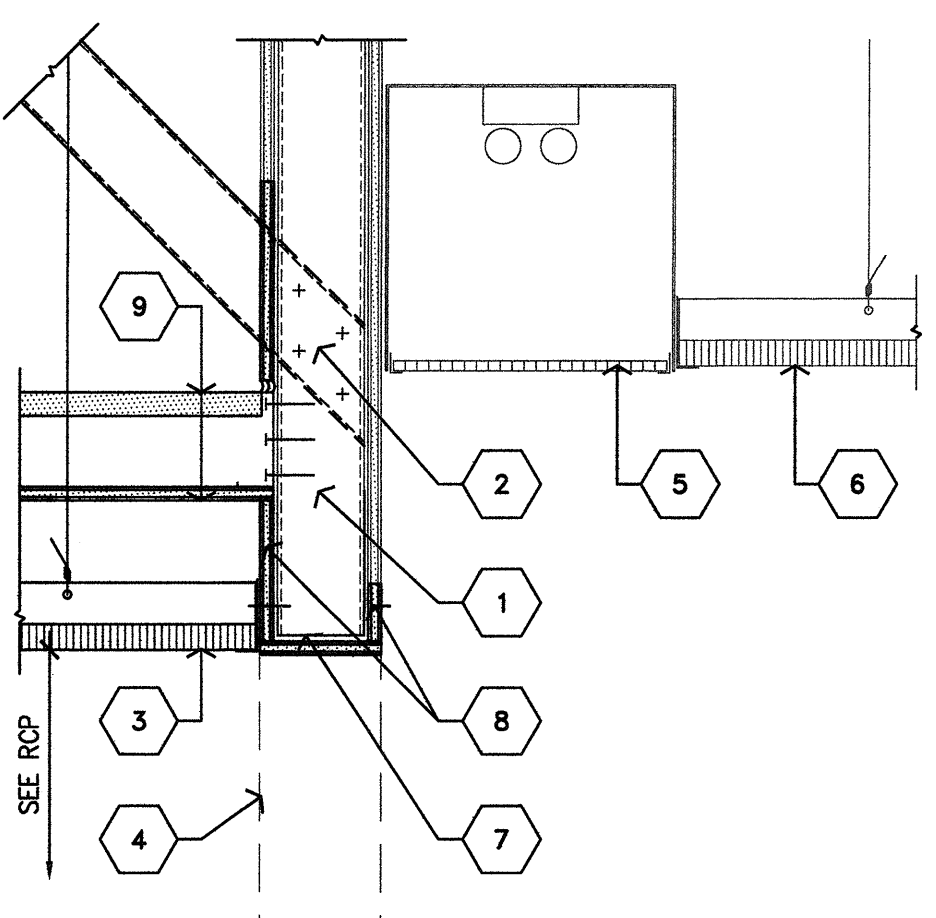
389  
RFI# 4467



1. 1/2" HILTI KBTZ EXPANSION BOLT  
@ 48" O.C.
2. 4" SLIP TRACK CONT.
3. 400S162-54 STUD AT 16" O.C.
4. STUD BEYOND
5. 250S162-54 BRACE
6. 4- #10 SMS STUD
7. DIAGONAL BRACING TO DECK AT  
48" STAGGERED CENTERS MAX.
8. 250S137-54 SOFFIT STUD AT 16" O.C.
9. 10" CEILING EXPANSION JOINT  
ASSEMBLY. FOR WIDTH SEE  
CEILING PLANS. ALIGN WITH  
INTERSECTING WALL EXPANSION  
JOINTS WHERE INDICATED.  
CONTINUOUS, WITH NO  
INTERMEDIATE JOINTS.
10. NOT USED
11. NOT USED
12. SCHEDULED CEILING FINISH.  
SEE FINISH PLAN. AND SEE  
REFLECTIVE CEILING PLAN  
FOR HEIGHT.

**SECTION DET. AT CARDIAC RM. #1.070.30**

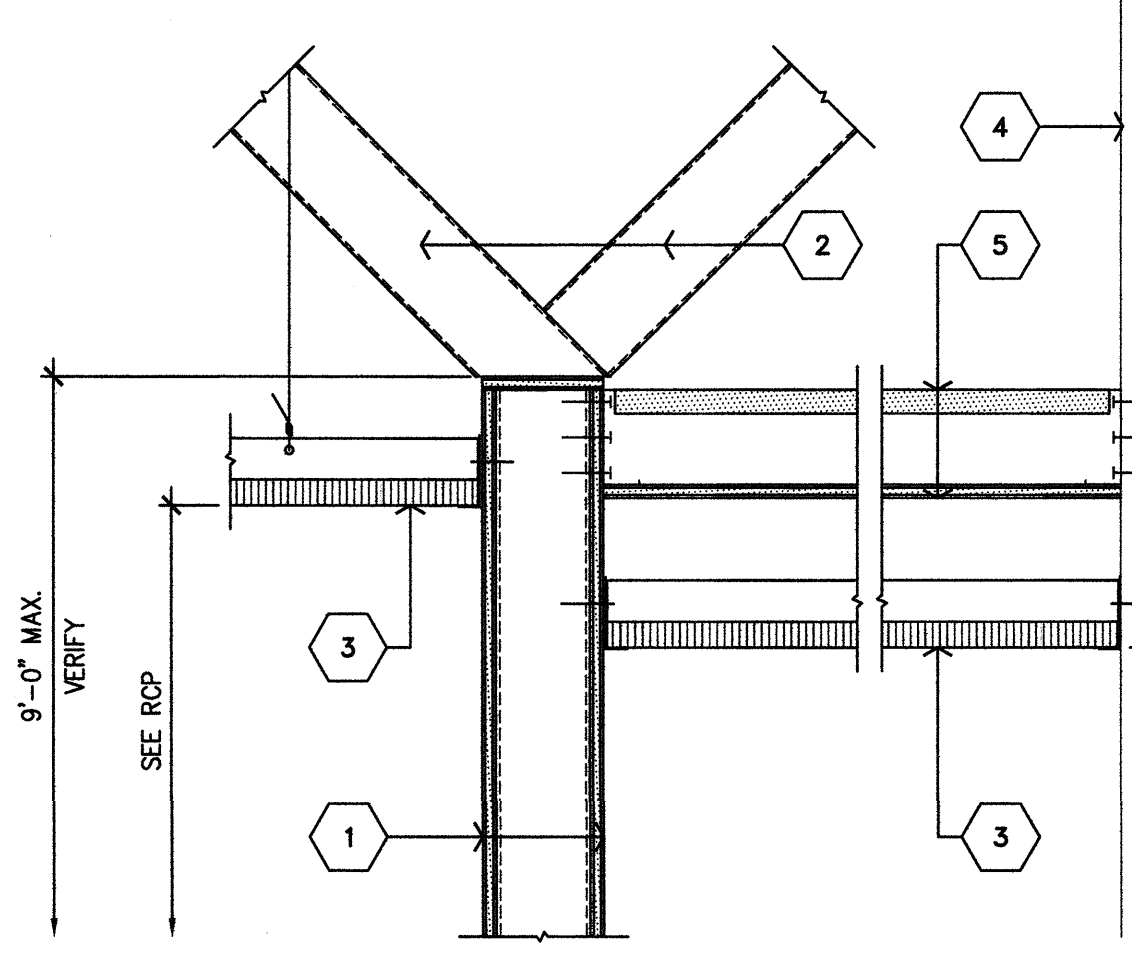
389  
RFI# 4467



1. EXISTING 1-HOUR RATED WALL TO  
REMAIN
2. 400S162-54 STUD BRACE AT 48"  
O.C. MAX. FASTEN TO EXISTING  
STUD WITH (4) #8 SMS AT EACH  
BRACE
3. SCHEDULED CEILING. SEE RCP.
4. REMOVE LOWER SECTION OF  
EXISTING WALL TO ALIGN SOFFIT  
WITH SCHEDULED CEILING.
5. EXISTING COVE LIGHT TO REMAIN.
6. EXISTING CEILING TO REMAIN
7. INSTALL NEW TRACK TO EXISTING  
STUD FRAMING
8. REMOVE EXISTING GYPSUM BOARD  
AS REQUIRED TO INSTALL NEW  
TRACK AND BRACE.
9. HORIZONTAL 1-HOUR CONSTRUCTION  
PER NER-258

**FURDOWN AT REMOVED WALL**

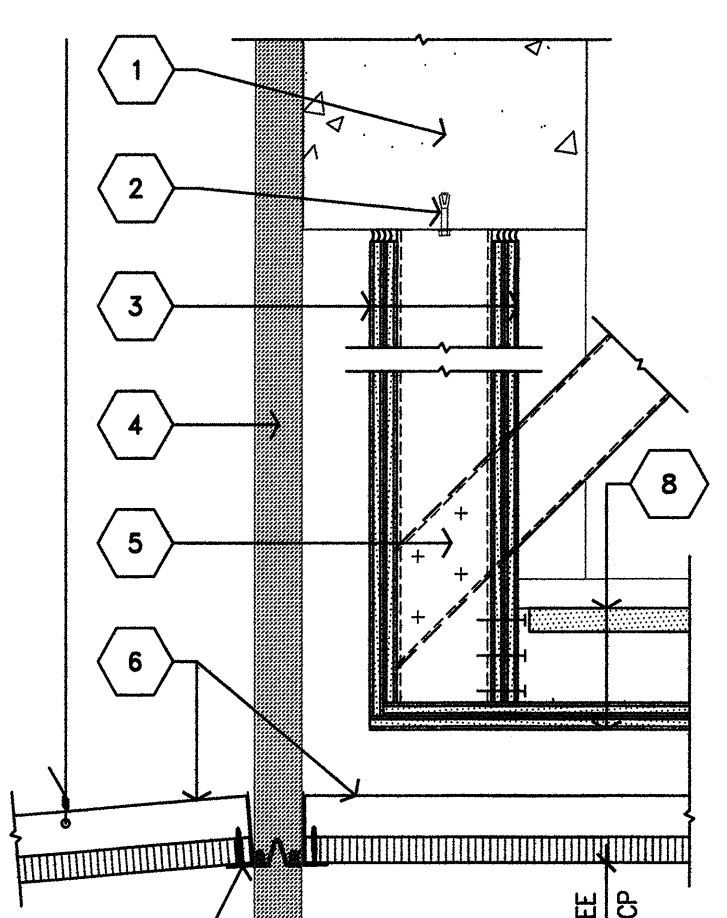
389  
RFI# 4467



1. 1-HOUR PARTITION PER DETAIL  
D2/A11.3
2. 400S162-54 STUD BRACE AT 48"  
O.C. MAX - ALTERNATE.
3. SCHEDULED CEILING. SEE RCP.
4. EXISTING FULL-HEIGHT PARTITION  
TO REMAIN.
5. HORIZONTAL 1-HOUR TUNNEL  
CONSTRUCTION PER NER-258

**PARTITION AT 1-HOUR TUNNEL**

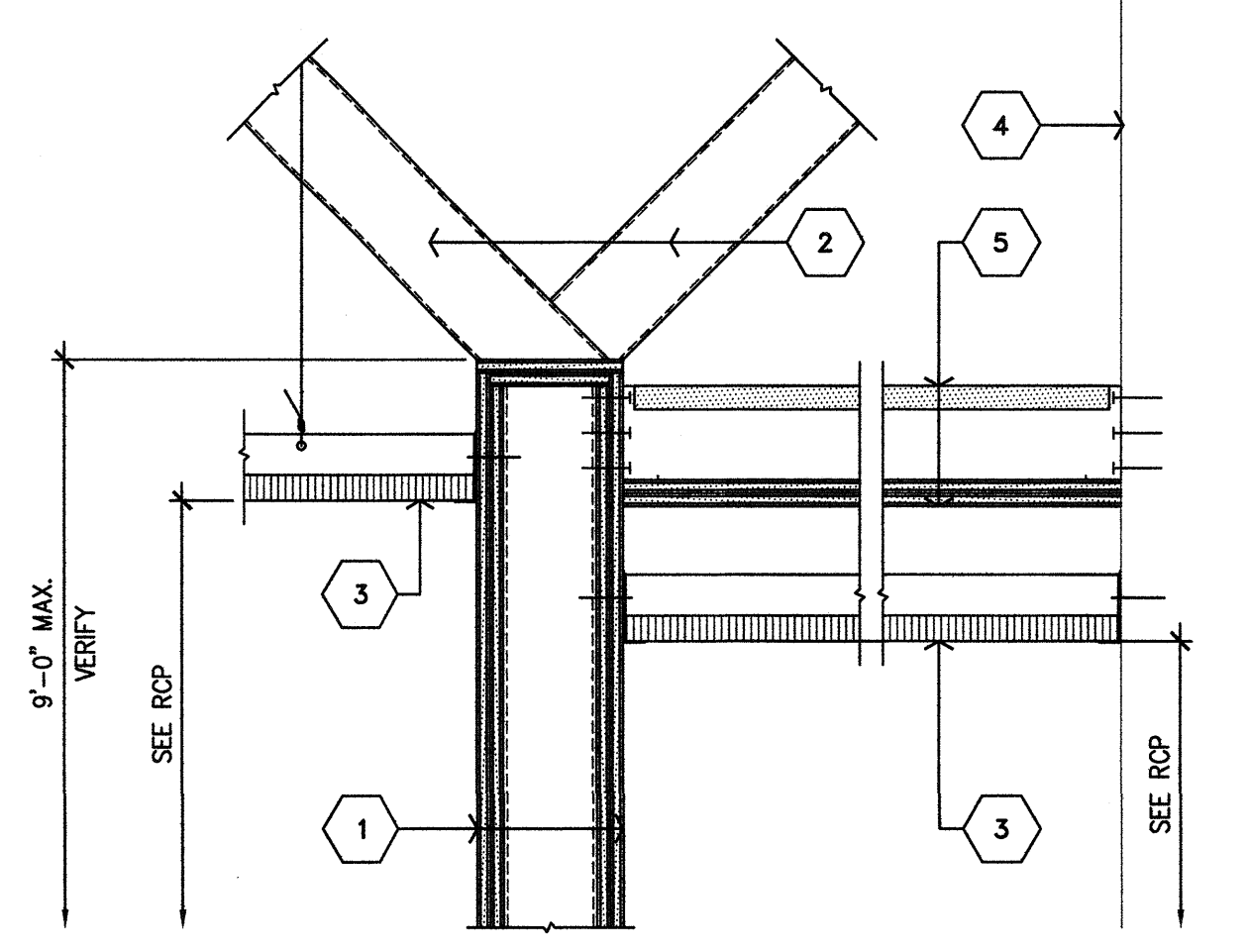
389  
RFI# 4467



1. EXISTING CONCRETE WALL
2. 1/2" HILTI KBTZ EXPANSION BOLT @  
48" O.C.
3. 2-HOUR PARTITION PER DETAIL  
A3/A11.3
4. VERTICAL EXPANSION JOINT COVER  
AT WALL BEYOND.
5. 400S162-54 STUD BRACE AT 48"  
O.C. MAX. FASTEN TO STUD WITH  
(4) #8 SMS AT EACH BRACE.
6. SCHEDULED CEILING. SEE RCP.
7. 2" CEILING EXPANSION JOINT  
ASSEMBLY. VINYL FACED, FOR  
WIDTH SEE CEILING PLANS. ALIGN  
WITH INTERSECTING WALL  
EXPANSION JOINTS WHERE  
INDICATED. CONTINUOUS, WITH NO  
INTERMEDIATE JOINTS.
8. HORIZONTAL 2-HOUR  
CONSTRUCTION PER NER-258

**SECTION DETAIL AT CEILING E.J.**

389  
RFI# 4467



1. 2-HOUR PARTITION PER DETAIL  
A3/A11.3
2. 400S162-54 STUD BRACE AT 48"  
O.C. MAX - ALTERNATE.
3. SCHEDULED CEILING. SEE RCP.
4. FULL-HEIGHT 2-HOUR RATED  
PARTITION
5. HORIZONTAL 2-HOUR TUNNEL  
CONSTRUCTION PER NER-258

**PARTITION AT 2-HOUR TUNNEL**

389  
RFI# 4467

NOTE: FOR CONNECTION DETAIL AT FLOOR SLAB, SEE A3/A11.6.  
ALL STUD FRAMING TO BE 16 GA. MIN.

NOTE: FOR CONNECTION DETAIL AT FLOOR SLAB, SEE A3/A11.6.  
ALL STUD FRAMING TO BE 16 GA. MIN.

NOTE: FOR CONNECTION DETAIL OF BRACE AT FLOOR SLAB SEE A3/A11.6.  
ALL STUD FRAMING TO BE 16 GA. MINIMUM.

NOTE: FOR CONNECTION DETAIL OF BRACE AT FLOOR SLAB SEE A3/A11.6.  
ALL STUD FRAMING TO BE 16 GA. MINIMUM.

NOTE: FOR CONNECTION DETAIL OF BRACE AT FLOOR SLAB SEE A3/A11.6.  
ALL STUD FRAMING TO BE 16 GA. MINIMUM.

NOTE: FOR CONNECTION DETAIL OF BRACE AT FLOOR SLAB SEE A3/A11.6.  
ALL STUD FRAMING TO BE 16 GA. MINIMUM.