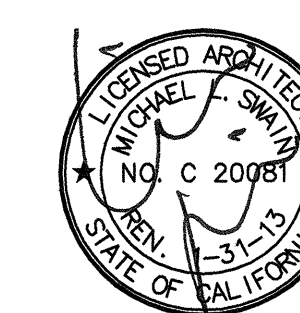


ARCHITECT OF RECORD
Paul C. Gloriod



Changes on these drawings do not consist of materially altered changes to approved drawings and don't require a change order.

OSHPD review ACO _____

OSHPD review FLSO _____

OSHPD review DSF _____

44	05/28/10	ASI #08
335	09/28/11	CO#262

Office of Statewide Health
Planning & Development/FDD
REVIEWED IN ACCORDANCE
THE REQUIREMENTS OF T24,
APPROVED

..... PAD-2011-0063

PROJECT NAME Hope 6 11/12/11

**CHILDREN'S HOSPITAL
OF ORANGE COUNTY**

455 S. Main St.
Orange, CA 92868-3874

TOWER II RECEIVED
OCTOBER 13, 2011
McCARTHY



PROJECT NUMBER

12011.00
Increment #7

OSHPD - PROJECT NUMBER
IL 072072-30

ISSUE
OSHPD PERMIT

DATE 01/27/2010

SCALE _____

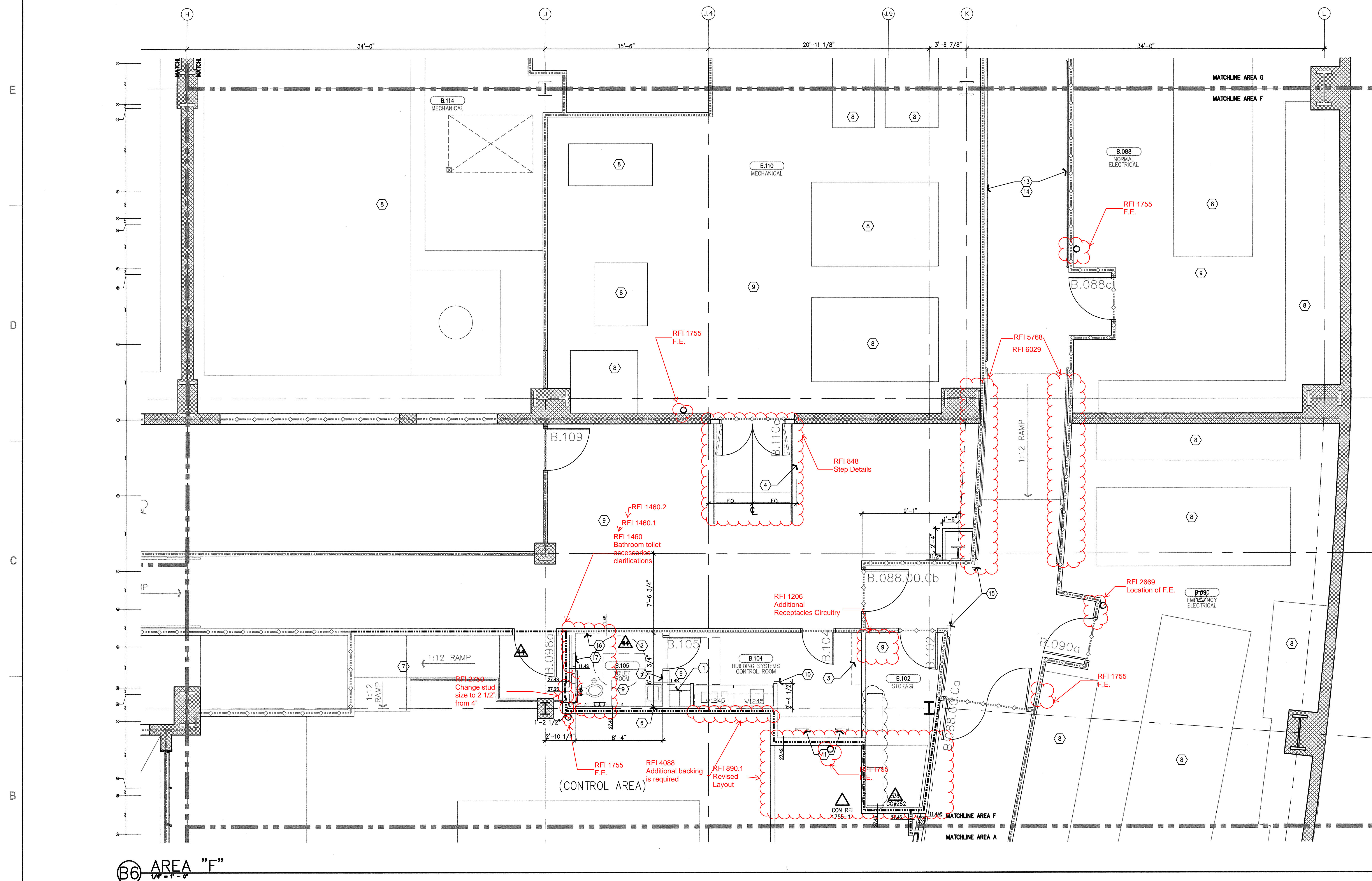
1/4"-1'-0"

DRAWING TITLE

LOWER LEVEL ENLARGED
PLAN AREA - F

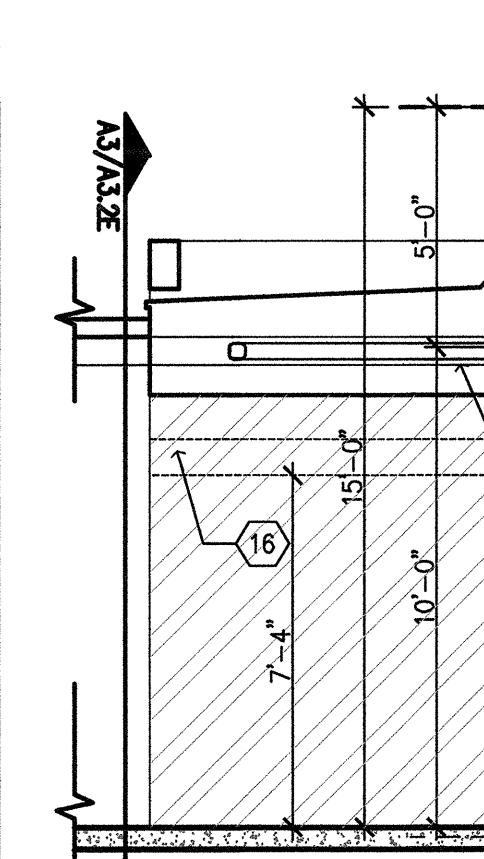
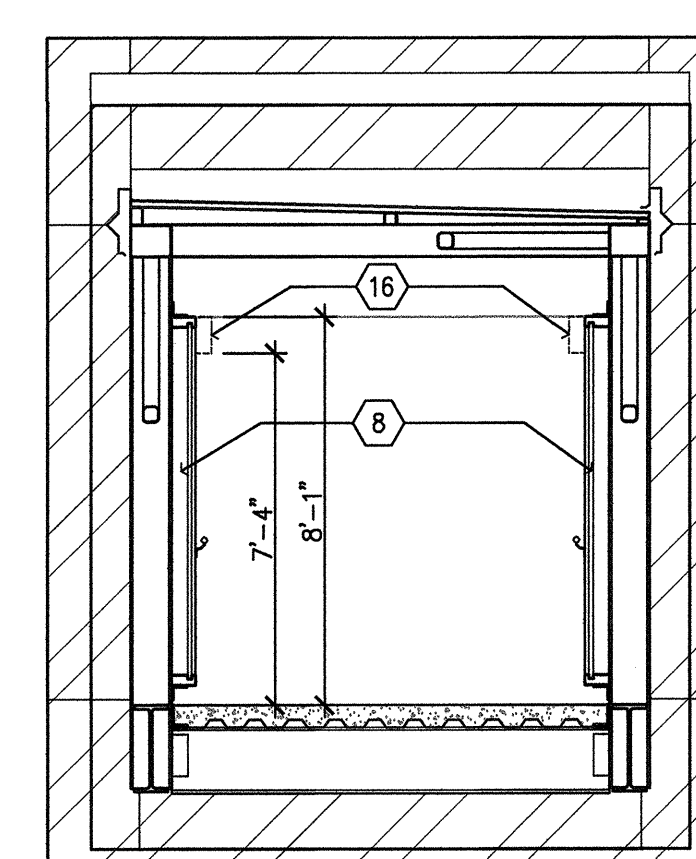
DRAWING NUMBER

A3.0F



- 1. Personal effects storage units, 2 high, type C. See A4/11.8.
- 2. Accessible toilet room. See typical plan detail B3/11.8.
- 3. Building/system alarm panels, Vol. increment, See MEP and Low Voltage plans.
- 4. Bullder rail. See Increment 6, B3/11.5, Vol. 2B for stair and rail.
- 5. Soap dispenser, wall mounted, OFCI.
- 6. Paper towel dispenser, wall mounted, OFCI.
- 7. Air purifier. See Increment 6, B3/11.5, Vol. 2B for requirements.
- 8. Housekeeping cart, see OFCI and Increment 6 for requirements.
- 9. For dimensions and partition types, see Increment 6, Vol. 2A and 2B
- 10. Toilet room, high impact plastic to 4'-0" A.F.F. See Detail B4/11.8.
- 11. Provide ground on counter top.
- 12. Not Used.
- 13. Bumper rail. See detail B4/11.8.
- 14. Handrail/crossrail. See detail B4/11.8.
- 15. Corner guard. Stainless steel to 4'-0" A.F.F.
- 16. Robe hook. See D6/11.7 for mounting height.
- 17. Toilet room mirror. See A5/11.7 for mounting height location.

- A. Information shown or referenced on enlarged and/or 1/4" scale drawings will generally not be shown on the smaller scale drawings.
- B. Partition types are scheduled on plans by number. See the "General Notes" section of the Division 05/2.1 and Partition Types on Sheet A1/1.1, A1/1.3, and A1/1.3.2 for the definition of partition type references.
- C. Field coordinate all field routed pipe, conduit runs, etc., with locations of recessed lighting and equipment. In the event of a conflict, accessory locations take precedence.
- D. Close all joints between plumbing fixtures/accessories and dissimilar materials w/epoxide (i.e. between sinks and countertop), toilet fixtures and accessories to wall etc.
- E. Cabinet numbers noted on enlarged plans refer to Cabinet component numbers, fixtures, accessories, etc. that are identified or elevated on Sheet A3.0 unless specific detail references are keyed.
- F. Plan dimensions - refer to B2/A1/1.1 (General Notes).
- G. For vertical mounting heights of shower accessories. See Detail D6/A1/1.7.
- H. For vertical mounting heights of towel toilet stall accessories. See Detail A4/A1/1.7.
- I. For vertical mounting heights of accessible toilet stall accessories. See Detail A4/A1/1.7.
- J. For vertical mounting heights of typical restroom accessories. See Detail B6/A1/1.7.
- K. For vertical mounting heights of accessible accessories at restrooms. See Detail A4/A1/1.7.
- L. For equipment not identified on plan, see Equipment drawings and workbook-Increment #7. Vol. 2E.
- M.1 or partial enlarged plan at junior closets. See Detail A3/A1/1.1.
- N. Public/handicapped restroom graphics will be furnished and installed by the Owner's graphics supplier.
- O. Standard equipment wall mounting heights, see detail A2/A1/1.9.
- P. Medical equipment wall mounting heights, see details A4/A1/1.5, D3/A1/1.9 & Q0.02-Increment #7. Vol. 2E.
- Q. Fire Protection equipment Wall Mounting Heights, see detail D2/A1/1.9.
- R. Communication equipment Wall Mounting Heights, see detail A3/A1/1.9.
- S. Equipment mounting heights at Counter tops, see detail D3/A1/1.9.
- T. Equipment mounting heights at wall, see detail A4/A1/1.9.
- U. A minimum head clearance of 8'-0" must be maintained at all points in stairways including stair and landing framing.
- V. Equipment mounting heights are all identified, refer to ED drawing series-Increment #7. Vol. 2E and Equipment workbook. Specific items requiring structural support are cross referenced to structural support details via matrix shown on the Equipment workbook.
- W. Elevator hoist way entrance frames to have an embossed stainless steel graphic plaque with floor edge and wall edge markings for the blind.
- X. Conforms to governing Accessibility codes and standards.
- Y. All stair floor landings to receive stencil painted, semi-gloss enamel floor landing finish with floor edge and wall edge markings for the blind.
- Z. Scheduled wall color unless a graphic plaque is specifically detailed or noted.
1. Elevator Equipment wall mounting heights, see detail A6/A1/1.9 and B3/A1/1.9.
2. Floors, Frames, Sidelights and Windows. See Door Series. See also 101 series A6A. Provide wall blocking/backing for items weighing 20 lbs or less. See A6/A1/1.31.
- 3A. For personal effects storage unit types and sizes see A4/A1/1.8.
4. For typical equipment backing support, see A4/A1/1.9.
5. For equipment backing support, see A4/A1/1.9.
6. For boundaries of alternates and phasing, see the A-P drawing.
- 7E. Provide 3" grommet, unless otherwise noted at 3" - 0" O.C. maximum, field located at all electrical components of Nurses stations and Reception desks.
- 8F. For vertical mounting heights of service accessories. See Detail A3/A1/1.7-Increment #7. Vol. 2E.
- 9G. Provide access outside the Patient Room counter tops to serve as inspection



	S	T		U
	R	Q		
K		L	P	N
J		H		M
				G
D		E		F
C		B		A

A1 KEY PLAN

(A6) NOTES TO SHEET

A2 GENERAL NOTES