

FKP Architects

ARCHITECT OF RECORD
Paul C. Gloriot

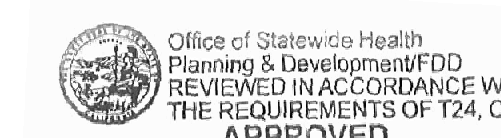


Changes on these drawings do not consist of materially altered changes to approved drawings and don't require a change order.
OSHPD review ACO
OSHPD review FLSO
OSHPD review DSE

REVISIONS

44	05/28/10	ASI #08
23	05/10/10	CO #25
13	12/01/10	ASI #48
18	03/28/10	CO #174
48	06/07/10	CO #193
16	03/01/11	CO #134
78	03/15/12	ASI #188
85	04/04/12	ASI #196

APPROVAL



CHANGE ORDER
INSTRUCTION BULLETIN
DEFERRED APPROVAL #
(OPTIONAL)

PROJECT NAME

CHILDREN'S HOSPITAL
OF ORANGE COUNTY

455 S. Main St.
Orange, CA 92668-3874

TOWER II



PROJECT NUMBER

12011.00
Increment #7

OSHPD - PROJECT NUMBER

IL 072072-30

ISSUE

OSHPD PERMIT

DATE

01/27/2010

SCALE

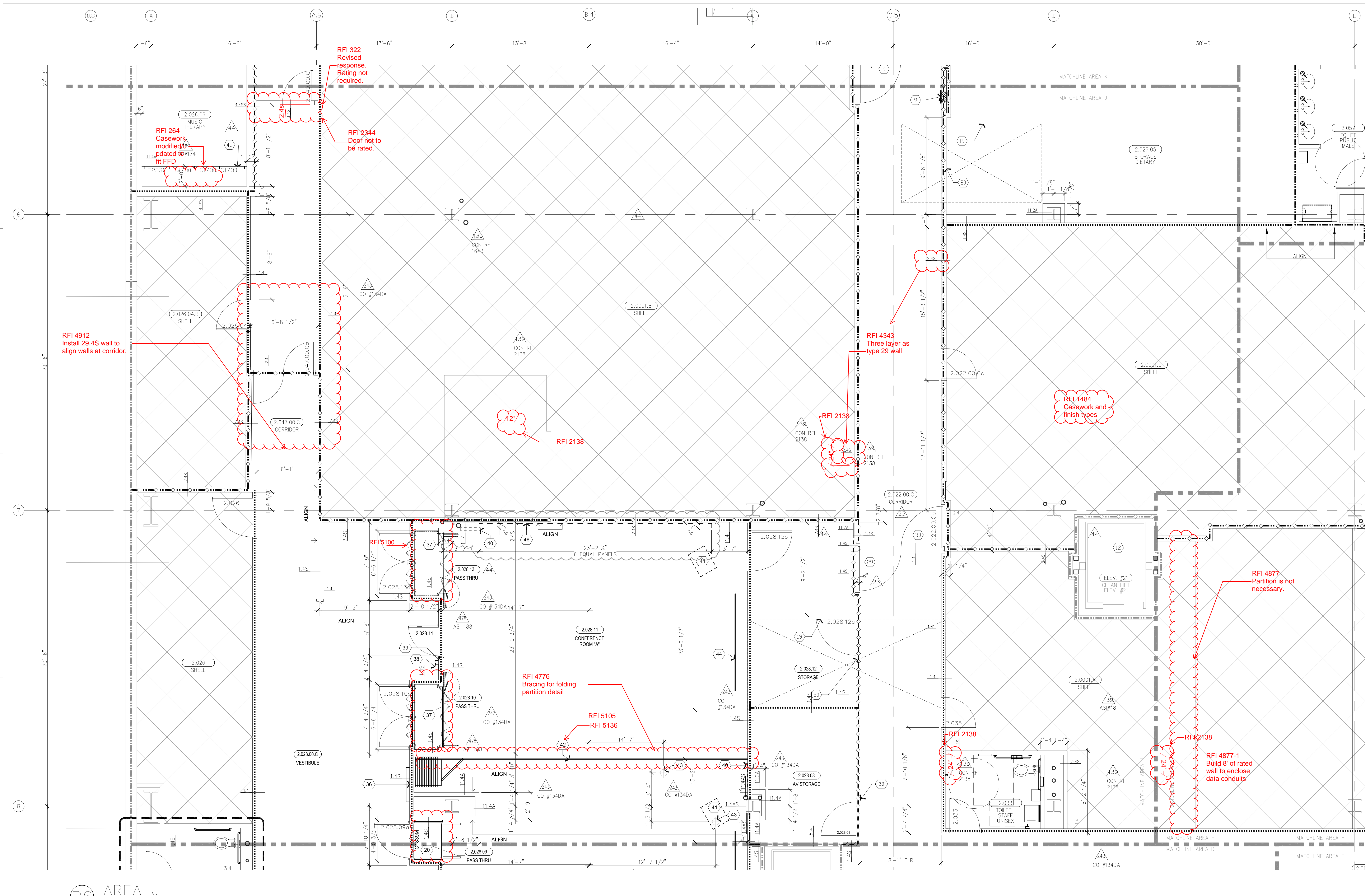
1/4" = 1' - 0"

DRAWING TITLE

LEVEL 2 ENLARGED PLAN
AREA - J

DRAWING NUMBER

A3.2J



B6 AREA J
1/4" = 1' - 0"

1. Accessible toilet room. See typical plan detail B3/A11.7.
2. Pans, cabinet, pc, keyboard, monitor and mouse, wall mounted. See Structural detail A1/S3.6 similar.
3. Wall talker/writing wall, 5' wide. See Audio Visual drawings. See Structural detail B4/S3.5 similar.
4. Mirror, full length of counter, from top of splash to 7'-0" A.F.F.
5. TV monitor, wall mounted. See A5/S3.5.
6. Personal effects storage units, type C, 2 high, 36 total units, plastic laminate finish. See referenced elevation.
7. Fully recessed paper towel and trash receptacle. See B6/A11.7.
8. Solid surface countertop. See A2/A11.7 for detail.
9. Fire extinguisher and fire valve cabinet, wall recessed, point to match adjacent wall, typical. See B2/A11.8 for detail.
10. Personal effects storage units, type C, 2 high, 24 total units, plastic laminate finish. See referenced elevation.
11. Align finished face of partition.
12. For construction requirements this area, see Increment #6, Vol. 2A & 2B.
13. Not used.
14. Paper towel dispenser, wall mounted, OFC, see Equipment drawings and workbook.
15. Soap dispenser, wall mounted, OFC, see Equipment drawings and workbook.
16. TV monitor and DVD player unit, wall mounted. See Equipment drawings and workbook. See A5/S3.5 and D1/S3.6.
17. Not used.
18. Divider, two layer 3/4" plywood, with 4" radius return, floor supported, extend 24" above countertop, plastic laminate.
19. Outline of mechanical shaft above, terminates above ceiling. See Reflected Ceiling Plan.
20. Terminate wall at bottom of shaft enclosure.
21. Equipment item. See Equipment drawings and workbook, typical.
22. Shower seat. See detail D5/A11.7.
23. Shower rod. For shower curtain see interiors.
24. Accessible shower, see detail D3/A11.7.
25. Towel bar, 24"W, mounted at 5'-4" A.F.F.
26. Towel rack, 24"W, mounted at 4'-6" A.F.F.
27. Robe hook, mounted at 4'-6" A.F.F.
28. Floor box.
29. Integrated double door, wall recessed. See D3/A11.4.2.
30. Integrated double door, wall recessed. See D2/A11.4.2.
31. Modified countertop to 25 1/2" deep for entire cabinet length. Detail C5A/A9.0.
32. Not used.
33. Not used.
34. Not used. CO #134DA
35. Not used.
36. TV monitor, wall mounted at 6'-0" A.F.F. to center. See Equipment and workbook, for blocking/support, see vol. 3b, increment 7.
37. Pass thru with double sided casework.
38. Wall mounted phone. See Telecom.
39. Card reader. See Security and Electrical.
40. Charting station, see equipment drawings and workbook. see A4/S3.2.
41. Lectern. See Telecom.
42. Accordion partition track, ceiling mounted. See details A6/B6/A11.4.1.
43. Core. See Electrical and Refer to ASI #46.
44. Projection screen, recessed ceiling. See Detail D3/A11.6 and Telecom.
45. Lockable cabinet at AV rack per detail C1/A9.0.
46. Hold Fabric Wrapped Panels 2" from edge of wall devices.

- A. Information shown or referenced on enlarged and/or 1/4" scale drawings will generally not be shown on the smaller scale drawings.
- B. Partition types are scheduled on plans by number. See the "General Notes to Partition Types" on B2/A11.3 and Partition Types on Sheet A11.3, A11.3.1, and A11.3.2 for the definition of partition type references.
- C. Field coordinate all field routed pipe, conduit runs, etc., with locations of recessed accessories and equipment. In the event of a conflict, accessory locations take precedence.
- D. Close all joints between plumbing fixtures/accessories and dissimilar materials w/sealant (i.e. between sinks and countertops, toilet fixtures and accessories to wall, etc.).
- E. Cabinet numbers noted on enlarged plans refer to Cabinet component numbers, fixtures, accessories, etc., that are defined or elevated on Sheet A9.0 unless specific detail references are keyed.
- F. Plan dimensions - refer to B2/A11.3 (General Notes).
- G. For vertical mounting heights of shower accessories, see Detail D6/A11.7.
- H. For vertical mounting heights of typical toilet stall accessories, see Detail A4/A11.7.
- I. For vertical mounting heights of accessible toilet stall accessories, see Detail A5/A11.7.
- J. For vertical mounting heights of typical restroom accessories, see Detail B6/A11.7.
- K. For vertical mounting heights of accessible accessories at restrooms, see Detail A6/A11.7.
- L. For equipment not identified on plan, see Equipment drawings and workbook-increment #7, Vol. 2E.
- M. For partial enlarged plan at Janitor closets, see Detail A3/A11.7.
- N. Public/handicapped restroom graphics will be furnished and installed by the Owner's graphics supplier.
- O. Standard equipment wall mounting heights, see detail A2/A11.9.
- P. Medical equipment wall mounting heights, see details A4/A11.9, D3/A11.9 & Q0.02-Increment #7, Vol. 2E.
- Q. Fire Protection equipment wall Mounting Heights, see detail D2/A11.9.
- R. Communication equipment wall Mounting Heights, see detail A3/A11.9.
- S. Equipment mounting heights at Countertops, see detail D3/A11.9.
- T. Equipment mounting heights at Desks, see detail A4/A11.9.
- U. A minimum head clearance of 6'-8" must be maintained at all points in stairways including stair and landing framing.
- V. For all dashed in equipment not identified, refer to EQ drawing series-increment #7, Vol. 2E and Equipment workbook. Specific items requiring structural support are cross referenced to structural support details via matrix shown on the Equipment drawings-increment #7, Vol. 2F.
- W. All elevator hold way entrance frames to have an embossed stainless steel graphic plaque with the floor landing number and Standard Braille markings for the blind. Conform to governing Accessibility codes and standards.
- X. All stair floor landings to receive stencil painted, semi-gloss enamel floor landing numerals 12" high adjacent to the door at 5'-0" AFF in a contrasting color to the scheduled wall color unless a graphic plaque is specifically detailed or noted.
- Y. Elevator equipment wall mounting heights, see detail A6/A11.9 and B3/A11.9.
- Z. Doors, Frames, Sidelites and Windows (See Door Schedule). See A11 sheet series.
- AA. Provide wall blocking/backing for items weighing 20lbs or less. See A6/A11.3.1.
- BB. For personal effects storage unit types and sizes see A4/A11.8.
- CC. For typical equipment backing support, see A4/S11-Increment #5.
- DD. For boundaries of alternates and phasing, see the AP drawing series.
- EE. Provide 3" grommet, unless otherwise noted at 3'-0" O.C. maximum, field located at all electrical components of Nurses stations and Reception desks.
- FF. For vertical mounting heights of service accessories, see Detail A3/A11.7-Increment #7, Vol. 2E.
- GG. Provide access panels below the Patient Room countertops to serve as inspection ports for the Patient Room bathtubs.

GENERAL NOTES

KEY PLAN

