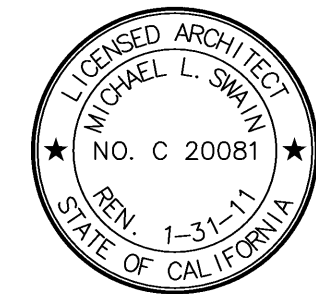


FKP Architects

ARCHITECT OF RECORD
Paul C. Gloriot



1. Fire extinguisher cabinet. See detail B2/A11.8.
2. Shell space for future expansion.
3. Electric drinking fountain, bi-level. See Plumbing, see D2/A11.8.
4. Not used.
5. For construction requirements this are, see Increment 6, Vol. 2A & 2B.
6. 30" x 48" refuge space.
7. 2-way communication system and signage.

D2 NOTES TO SHEET

- A. Information shown or referenced on enlarged and/or 1/4" scale drawings will generally not be shown on the smaller scale drawings.
- B. Partition types are scheduled on plans by number. See the "General Notes to Partition Types" on B2/A11.3 and Partition Types on Sheet A11.3, A11.3.1, and A11.3.2 for the definition of partition type references.
- C. Field coordinate all field routed pipe, conduit runs, etc., with locations of recessed accessories and equipment. In the event of a conflict, accessory locations take precedence.
- D. Close all joints between plumbing fixtures/accessories and dissimilar materials w/sealant (i.e. between sinks and countertops, toilet fixtures and accessories to wall, etc.).
- E. Cabinet numbers noted on enlarged plans refer to Cabinet component numbers, fixtures, accessories, etc. that are defined or elevated on Sheet A5.0 unless specific.
- F. Plan dimensions - refer to B2/A11.3 (General Notes).
- G. For vertical mounting heights of door hardware, see Detail D6/A11.7.
- H. For vertical mounting heights of typical toilet stall accessories, see Detail A4/A11.7.
- I. For vertical mounting heights of accessible toilet stall accessories, see Detail A5/A11.7.
- J. For vertical mounting heights of typical restroom accessories, see Detail B6/A11.7.
- K. For vertical mounting heights of accessible accessories at restrooms, see Detail A6/A11.7.
- L. For equipment not identified on plan, see Equipment drawings and workbook-Increment #7, Vol. 2E.
- M. For partial enlarged plan at junior closets, see Detail A3/A11.7.
- N. Public/handicapped restroom graphics will be furnished and installed by the Owner's graphics supplier.
- O. Standard equipment wall mounting heights, see detail A2/A11.9.
- P. Medical equipment wall mounting heights, see details A4/A11.9, D3/A11.9 & Q0.02-Increment #7, Vol. 2E.
- Q. Fire Protection equipment wall mounting heights, see detail D2/A11.9.
- R. Communication equipment wall mounting heights, see detail A3/A11.9.
- S. Equipment mounting heights at Countertops, see detail D3/A11.9.
- T. Equipment mounting heights at Desks, see detail A4/A11.9.
- U. A minimum head clearance of 6'-8" must be maintained at all points in stairways including stair and landing framing.
- V. For all dashed in equipment not identified, refer to E0 drawing series-Increment #7, Vol. 2E and Equipment workbook. Specific items requiring structural support are cross referenced to structural support details via matrix shown on the Equipment drawings-Increment #7, Vol. 2E.
- W. All elevator hoist way entrance frames to have an embossed stainless steel graphic plaque with the floor landing number and Standard Braille markings for the blind. Conform to governing Accessibility codes and standards.
- X. All star floor landings to receive stencil pointed, semi-gloss enamel floor landing numerals 12" high adjacent to the door at 5'-0" AFF in a contrasting color to the scheduled wall color unless a graphic plaque is specifically detailed or noted.
- Y. Elevator Equipment Wall Mounting Heights, see detail A6/A11.9 and B3/A11.9.
- Z. Doors, Frames, Sidelites and Windows (See Door Schedule). See A11 sheet series.
- AA. Provide wall blocking/backing for items weighing 20lbs or less. See A6/A11.3.1.
- BB. For personal effects storage unit types and sizes see A4/A11.8.
- CC. For typical equipment backing support, see A4/S1.1-Increment #5.
- DD. For boundaries of alternates and phasing, see the AP drawing series.
- EE. Provide 3" grammet, unless otherwise noted at 3'-0" O.C. maximum, field located at all electrical components at Nurses stations and Reception desks.
- FF. For vertical mounting heights of service accessories, see Detail A3/A11.
- GG. Provide access panels below the Patient Room countertops to serve as inspection ports for the Patient Room bathtubs.

REVISIONS

REVISIONS	DATE	DESCRIPTION
44	02/05/10	INFORMATION BULLETIN #5
	05/28/10	ASI #08

APPROVAL

PROJECT NAME

CHILDREN'S HOSPIT.
OF ORANGE COUNT'

455 S. Main St.
Orange, CA 92868-3874

TOWER II



PROJECT NUMBER

12011.00
Increment #7

OSHPD - PROJECT NUMBER

IL 072072-30

ISSUE

OSHPD PERMIT

DATE

01/27/2010

SCALE

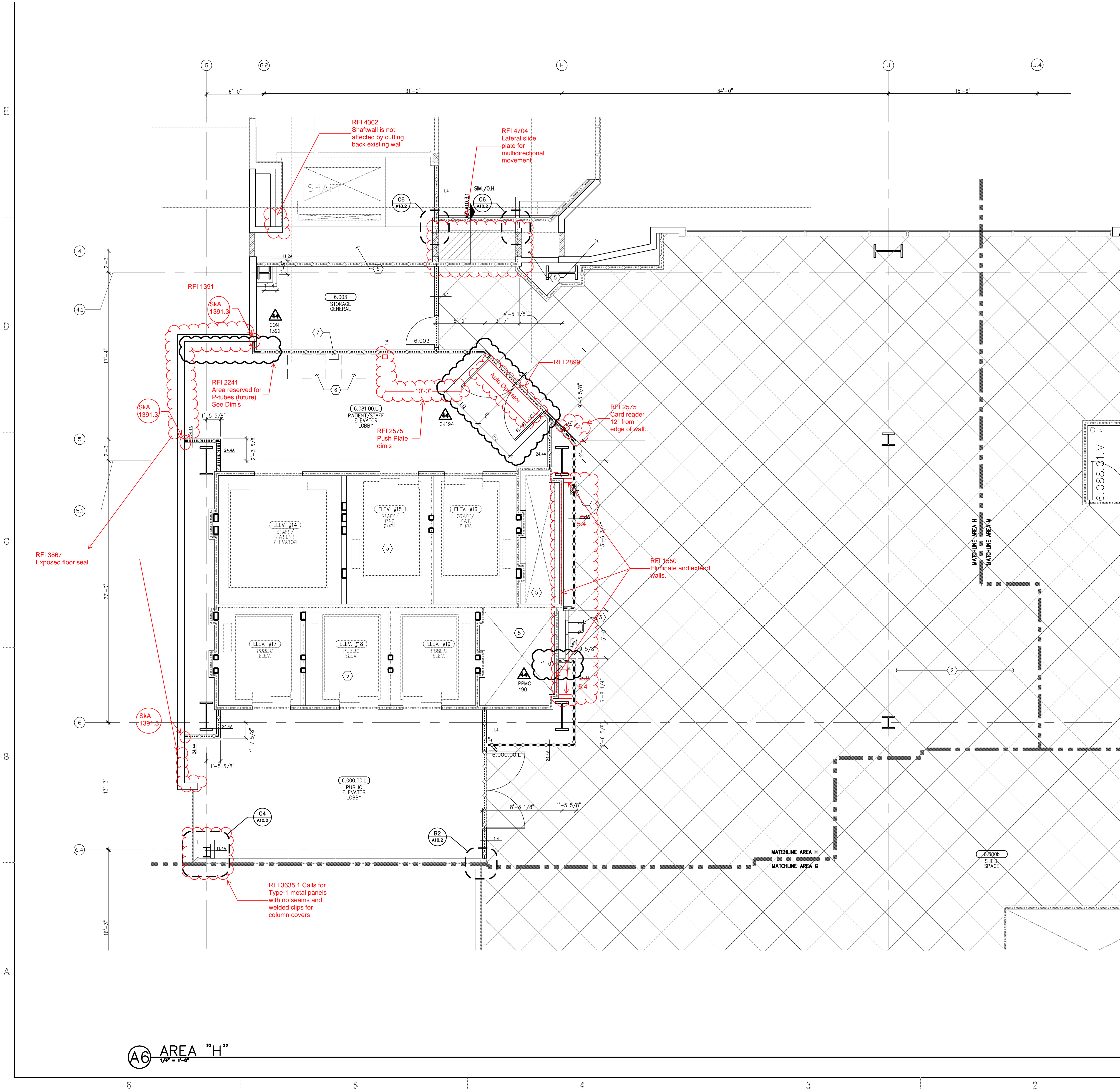
1/4" = 1' - 0"

DRAWING TITLE

LEVEL 6 ENLARGED PLAN
AREA - H

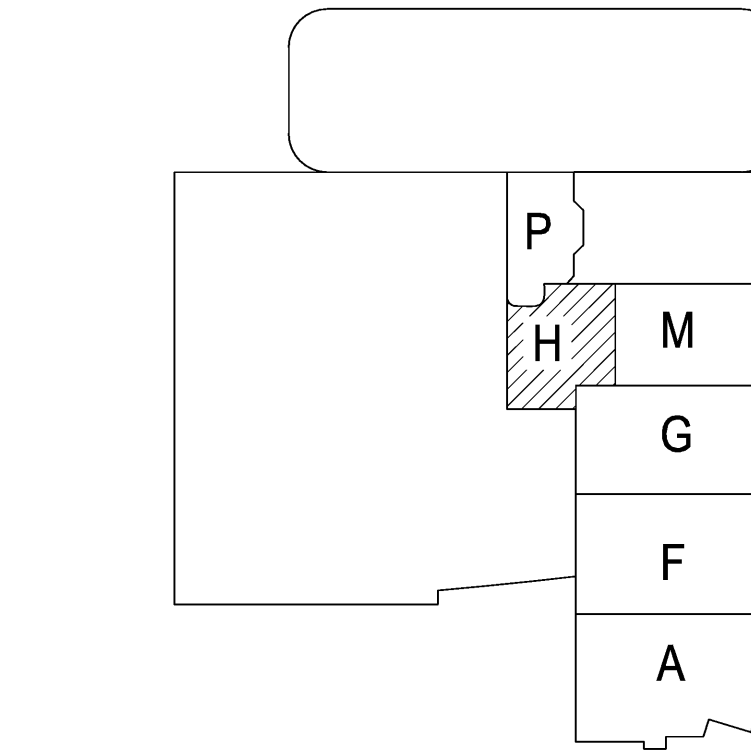
DRAWING NUMBER

A3.6H



A6 AREA "H"
1/4" = 1'-0"

B2 GENERAL NOTES



A1 KEY PLAN