
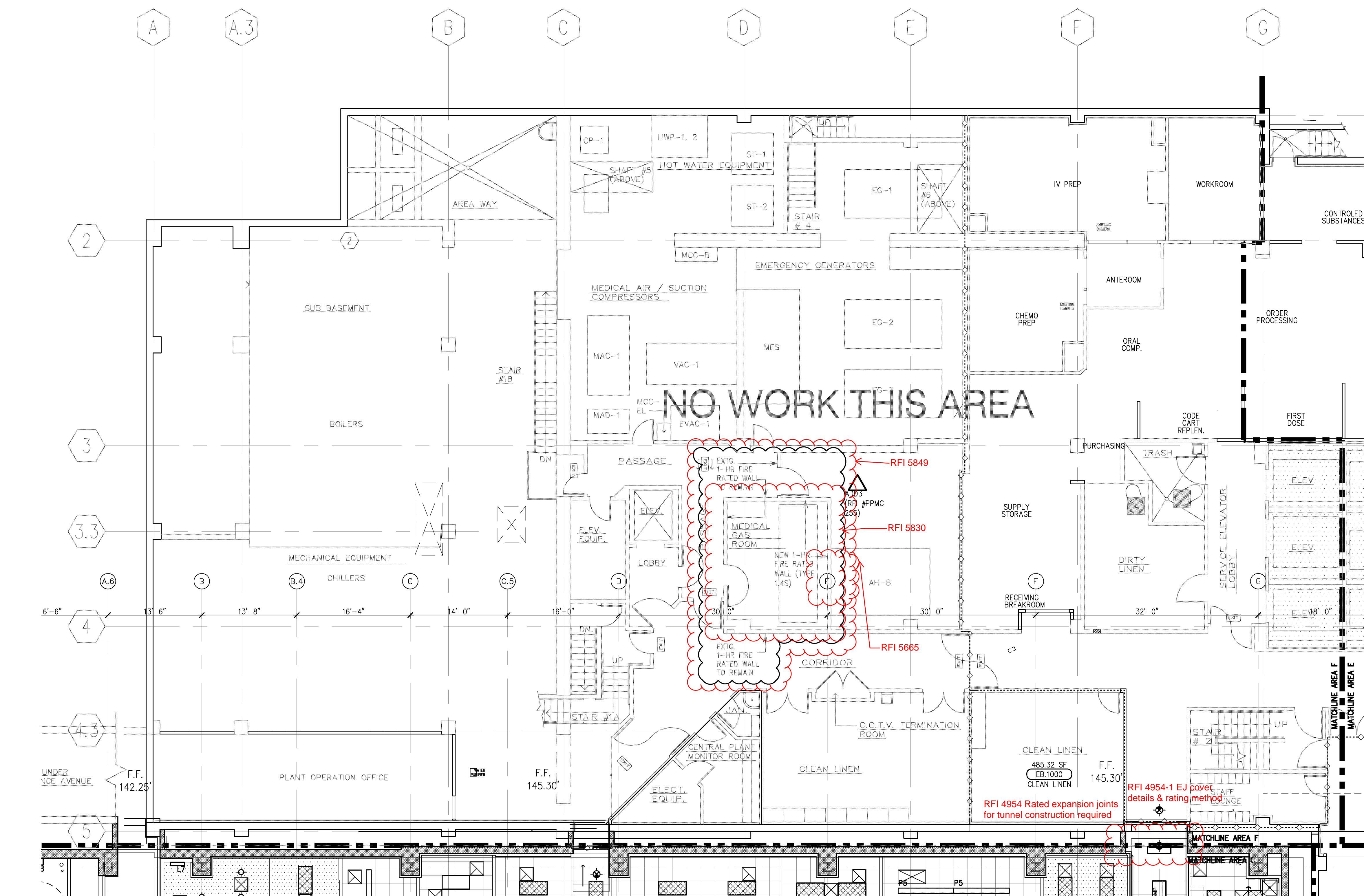
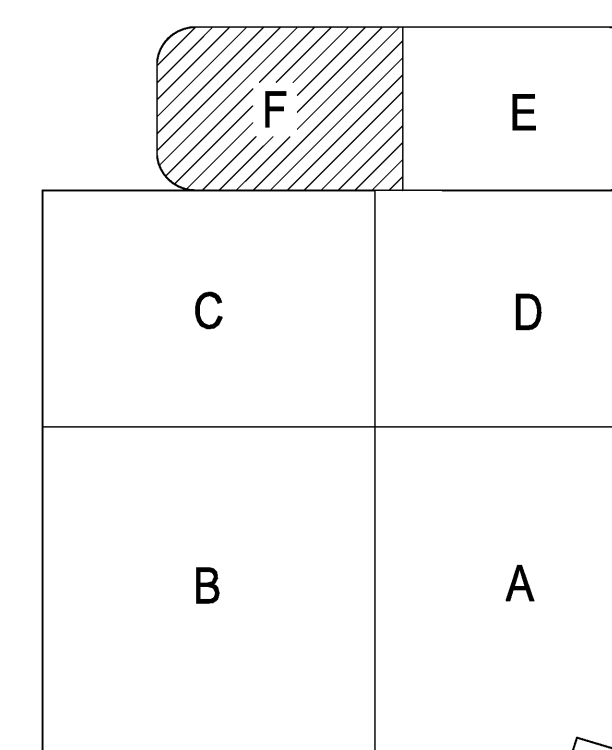




- A. REFER TO "FINISH SCHEDULE" FOR FURTHER DEFINITION OF CEILING MATERIALS AND FINISHES.
- B. CEILING HEIGHT WILL TYPICALLY BE [9'-0"] UNLESS OTHERWISE NOTED ON THE REFLECTED CEILING PLAN.
- C. LOCATE ALL CEILING MOUNTED SMOKE DETECTORS AND SPEAKERS IN THE CENTER OF FULL PANELS AT LAY-IN CEILINGS.
- D. LOCATE ALL SPRINKLER HEADS IN THE CENTER OF FULL PANELS AT LAY-IN CEILINGS. AT CYSPOND BOARD CEILINGS, SYMMETRICALLY SPACE HEADS AND CENTER ON LIGHT ROWS WHERE AREA LIMITATIONS PERMIT.
- E. REFER TO MEP DRAWINGS FOR LOCATIONS OF ALL CEILING PANELS IN TOILETS. UNLESS NOTED OR DETAILED OTHERWISE ACCESS PANELS IN TOILETS AND BACK OF HOUSE SPACES WITH DRYWALL OR PLASTER CLINGS ARE TO BE PAINTED TO MATCH THE MASTER OF DRYWALL OR PLASTER. CEILING PANELS IN AUTOBODY AND BODY HOLDING AREAS ARE TO BE STAINLESS STEEL.
- F. FOR SEISMIC BRACING AND ANCHORAGE REQUIREMENTS FOR SUSPENDED ACQUISITION CEILING, SEE:  **DASS** C-100.
- G. FOR SEISMIC BRACING AND ANCHORAGE REQUIREMENTS FOR SUSPENDED CYSPOND BOARD CEILINGS SEE DETAIL: AS/AT/1.6.
- H. CYSPOND BOARD CEILING PANELS SHALL NOT BE LOWER THAN 8" A.F.F.
- I. ALL CEILING MOUNTED ITEMS WITH EIGHT TIGAS IDENTIFIED ON EQUIPMENT SERIES SHEETS ARE CROSSED REFERENCE TO STRUCTURAL SUPPORT DETAILS VARYING DOWN ON EQUIPMENT SERIES SHEETS.
- J. FOR ALL LAY IN CEILING PANELS ARRANGE CEILINGS TO NOT HAVE LESS THAN 4" CEILING TILE UNLESS OTHERWISE NOTED.
- K. SYSTEMS OF 12" WIDE TIE IN ACQUISITION CENTER OF ACQUISITION CEILING GRID SYSTEM TO MEET SEISMIC REQUIREMENTS.



NO WORK THIS AREA

RFI 4954 Rated expansion joints for tunnel construction required

A6 AREA F
1/8" = 1'-0"