

FKP Architects

ARCHITECT OF RECORD  
Paul C. Gloriot



Changes on these drawings do not constitute a change order.  
OSHPD review ACO  
OSHPD review FLSO  
OSHPD review DSE

REVISIONS

44	05/28/10	ASI #08
71	08/06/10	CO #61
205	03/01/11	ASI #72
209	03/10/11	ASI #74
39	11/15/11	CO #299
605	09/26/12	ASI #262

APPROVAL



CHANGE ORDER/INSTRUCTION BULLETIN/DEFERRED APPROVAL/ORDINANCE

PROJECT NAME

CHILDREN'S HOSPITAL  
OF ORANGE COUNTY

455 S. Main St.  
Orange, CA 92668-3874

TOWER II



PROJECT NUMBER

12011.00  
Increment #7

OSHPD - PROJECT NUMBER  
IL 072072-30

ISSUE  
OSHPD PERMIT

DATE  
01/27/2010

SCALE  
1/8" = 1' - 0"

DRAWING TITLE

DRAWING NUMBER

A4.3A

- LASER - IN USE LIGHT
- EXIT LIGHT FIXTURE
- RECESSED COMPACT FLUORESCENT DOWN LIGHT
- RECESSED COMPACT FLUORESCENT DIRECTIONAL SPOT LIGHT
- RECESSED LED DOWN LIGHT, WALL WASH TRIM, JUNO
- WALL MOUNTED LIGHT FIXTURE
- RECESSED COMPACT FLUORESCENT DOWN LIGHT WITH DIMMER
- RECESSED EXAM LIGHT, W/ WALL MOUNTED CONTROLS
- LOUIE LIGHTING, SD-888 RECESSED LIGHT
- RECESSED FIXTURE, P-8900, PRUDENTIAL LIGHTING
- LOUIS POULSEN, COLLAGE PENDANT
- PENDANT FIXTURE, QUEENY DOWN II, BRUCK
- BOYD, 9955 ARCHETYPE PENDANT, DIMMING SATIN NICKEL
- BOYD, 10217 CATAACS PENDANT (30"), DIMMING SATIN NICKEL
- CORELITE, VERTECH 218 4' SUSPENDED DIRECT/INDIRECT LINEAR FIXTURE
- BOA CALO SWING SPOT, BRUCK, WITH V/A TRACK, BRUCK
- BRUCK LEDRA DISPLAY TRACK AND SPOT LIGHT
- COLOR KINETICS, ICOLOR FLEX SL, TRACK MOUNTING
- COLOR KINETICS, ICOLOR FLEX SL, STRING LIGHT
- INDIRECT COVE FIXTURE, P-59, PRUDENTIAL LIGHTING
- PERIMETER WALL WASHER W/ ACRYLIC LENS, FOCUS I, FOCAL POINT
- LED COVE LIGHT
- FLUORESCENT COVE LIGHT
- FLUORESCENT WITH FLUSH LENS, AVENUE b, FOCAL POINT
- EUREKA C49169 LIGHT FIXTURE
- CEILING MOUNTED NURSE CALL INDICATOR
- 4" x 2" FLUORESCENT WALL MOUNTED LIGHT FIXTURE
- RECESSED FLUORESCENT LIGHT FIXTURE
- 1' x 4' FLUORESCENT WALL MOUNTED LIGHT FIXTURE
- 1' x 4' FLUORESCENT UTILITY LIGHT FIXTURE
- SURFACE MOUNTED LED LIGHT
- 2' x 4' FLUORESCENT LIGHT FIXTURE WITH PARABOLIC LENS
- 2' x 4' FLUORESCENT LIGHT FIXTURE DIRECT/INDIRECT
- 2' x 4' FLUORESCENT LIGHT FIXTURE WITH PRISMATIC LENS
- MULTI FUNCTION PATIENT LIGHT FIXTURE
- SQUARE MECHANICAL GRILLES
- LINEAR MECHANICAL GRILLES
- PLASTER CEILING
- METAL PANEL SOFFIT
- GYPSPUM BOARD CEILING
- OVERHEAD CABLE TRAY - SEE T5.13A FOR DETAIL
- 2' x 2' SUSPENDED ACOUSTICAL TILE

C1 Legend

- A. REFER TO "FINISH SCHEDULE" FOR FURTHER DEFINITION OF CEILING MATERIALS AND FINISHES.
- B. CEILING HEIGHT WILL TYPICALLY BE [9'-0"], UNLESS OTHERWISE NOTED ON THE REFLECTED CEILING PLAN.
- C. LOCATE ALL CEILING MOUNTED SMOKE DETECTORS AND SPEAKERS IN THE CENTER OF FULL PANELS AT LAY-IN CEILINGS.
- D. LOCATE ALL SPRINKLER HEADS IN THE CENTER OF FULL PANELS AT LAY-IN CEILINGS. AT GYPSUM BOARD CEILINGS, SYMMETRICALLY SPACE HEADS AND CENTER ON LIGHT ROWS WHERE AREA LIMITATIONS PERMIT.
- E. REFER TO MEP DOCUMENTS FOR LOCATIONS OF CEILING ACCESS PANELS. UNLESS NOTED OR DETAIL OTHERWISE ACCESS PANELS IN TOILETS AND BACK OF HOUSE SPACES WITH DRYWALL OR PLASTER CEILINGS ARE TO BE PAINTED METAL. PLASTER OR DRYWALL CEILINGS WITH ACCESS PANELS IN AUTOPSY AND BODY HOLDING AREAS ARE TO BE STAINLESS STEEL.
- F. FOR SEISMIC BRACING AND ANCHORAGE REQUIREMENTS FOR SUSPENDED ACOUSTICAL CEILINGS, SEE SHEET A11.10.
- G. FOR SEISMIC BRACING AND ANCHORAGE REQUIREMENTS FOR SUSPENDED GYPSUM BOARD CEILINGS SEE SHEET A11.10.1.
- H. GYPSUM BOARD FURROWED HEADERS WILL NOT BE LOWER THAN 8" A.F.F.
- I. ALL CEILING MOUNTED ITEMS WITH EQUIPMENT TAGS IDENTIFIED ON EQUIPMENT SERIES SHEETS ARE CROSSED REFERENCE TO STRUCTURAL SUPPORT DETAILS VIA MATRIX SHOWN ON EQUIPMENT DRAWINGS.
- J. FOR ALL LAY IN CEILING PANELS ARRANGE CEILINGS TO NOT HAVE LESS THAN 1/2" CEILING HOLE UNLESS OTHERWISE NOTED.
- K. PROVIDE 2" WIDE TRIM AT ALL PERIMETER OF ACOUSTICAL CEILING GRID SYSTEM TO MEET SEISMIC REQUIREMENTS.
- L. IN THE EVENT OF A CONFLICT BETWEEN REFLECTED PLANS AND FINISH SCHEDULES, THE REQUIREMENTS OF TABLE 1224.1 CBC 2007 PART 2 SHALL GOVERN.
- M. FOR O.R. DIFFUSER ARRAY, PROVIDE 2x4 SUSPENSION SYS. W/ GASKETS (GORDON INC. : GC-15); HOLD DOWN CLIPS; ALUMINUM PANELS (USG: PANZ 2x4 (SMOOTH) SQUARE EDGE LAY-IN.

B2 Enlarged Plan

1/4" = 1'-0"

1. No ceiling, exposed to structure.
2. Align finished face of furr-down with finished face of partition.
3. Align centerline of fixture with centerline of bed. See plan.
4. Shift enclosure above ceiling, see Section B6/A11.3.1.
5. See room 3.106.06 for typical notes.
6. Articulating arm with exam light and monitor, ceiling mounted, see Equipment and Detail A2/5.3 for mounting.
7. Ceiling mounted retractable hose drop for medical gasses and utilities, ceiling mounted, see similar Detail A1/S3.5 similar. See Equipment, Plumbing, and Electrical.
8. Concealed projection screen, see Detail D3/A11.6.
9. Drop down projector, see Detail D3/A11.6. See Equipment drawings and workbook.
10. Tracking board, see Equipment drawings and workbook. See Det. B4/S5 for structural mount detail.
11. Diffuser above light cove
12. Beam soffit at 11'-0" AFF

A2 Notes To Sheet

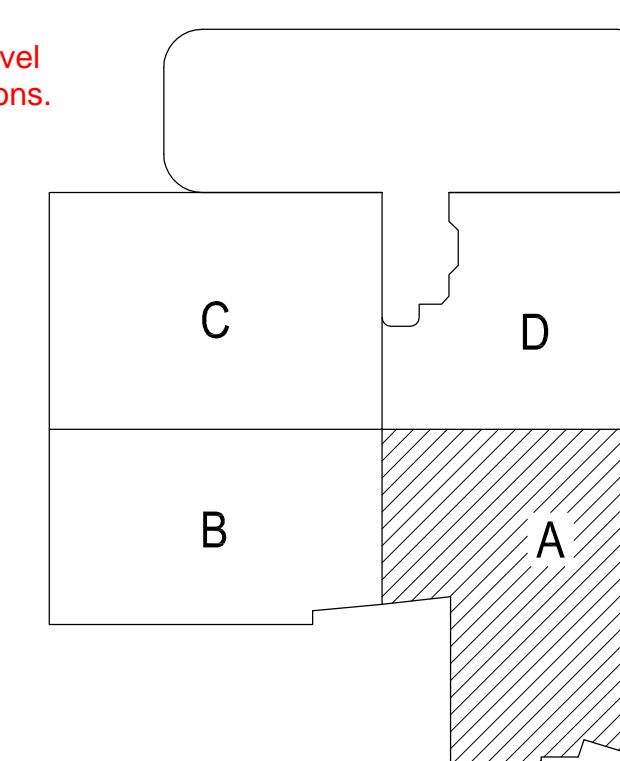
N.T.S.

B1 General Notes

N.T.S.

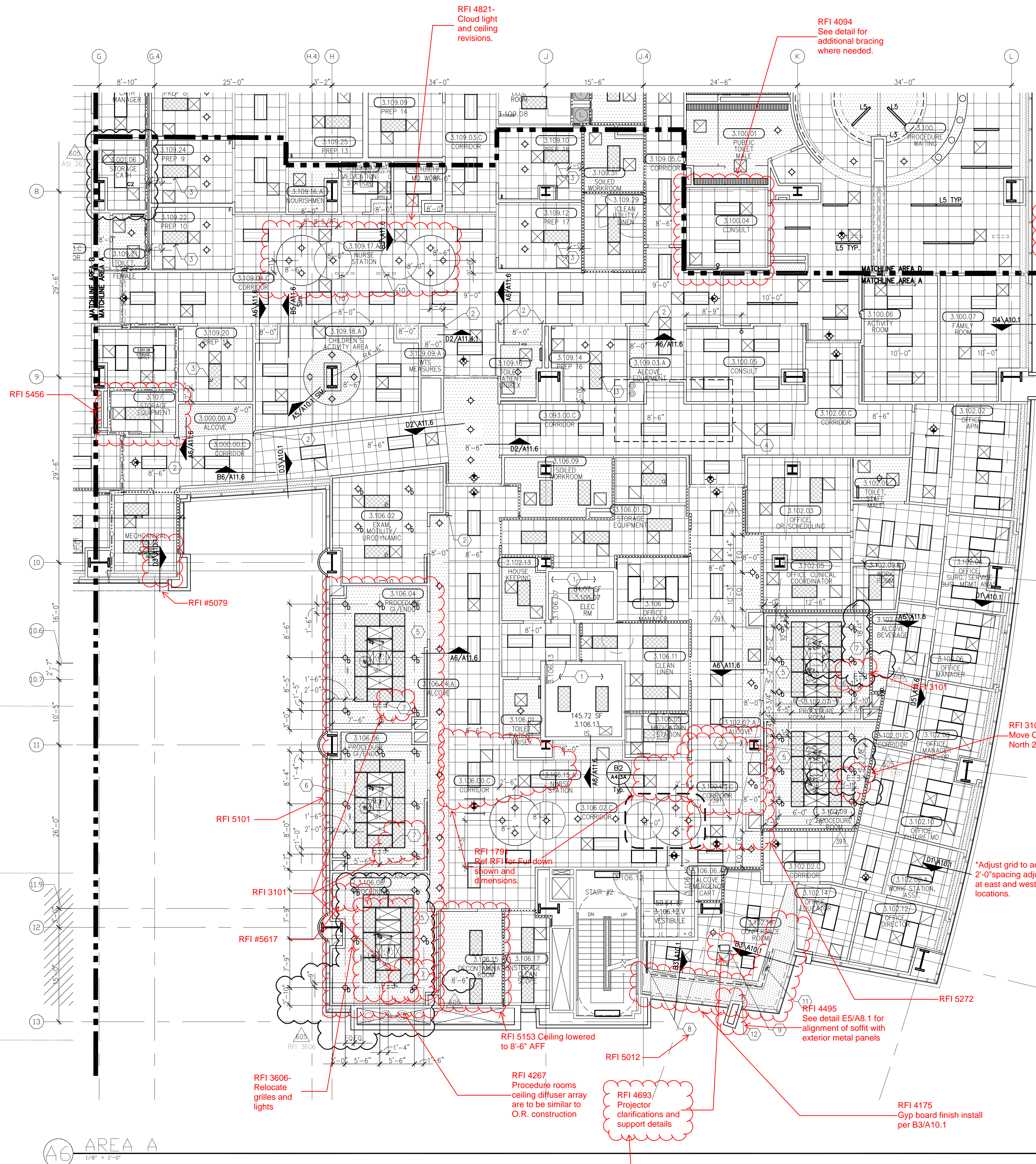
RFI #4587  
Revised RCP's for Level  
3 access panel locations.

RFI #5471  
3rd floor RCP  
coordination.



A1 KEY PLAN

N.T.S.



A6 AREA A  
1/8" = 1'-0"