

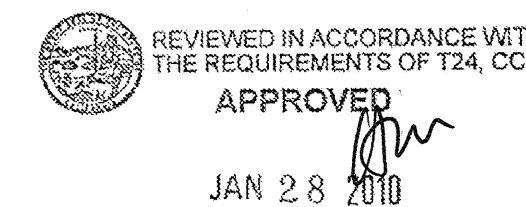
FKP Architects

ARCHITECT OF RECORD
Paul C. Gloriod



REVISIONS

APPROVAL



Office of Statewide Health
Planning & Development
FACILITIES DEVELOPMENT DIVISION

PROJECT NAME

CHILDREN'S HOSPITAL
OF ORANGE COUNTY

455 S. Main St.
Orange, CA 92668-3874

TOWER II



PROJECT NUMBER

12011.00
Increment #7

OSHPD - PROJECT NUMBER
IL 072072-30

ISSUE
OSHPD PERMIT

DATE
01/27/2010

SCALE

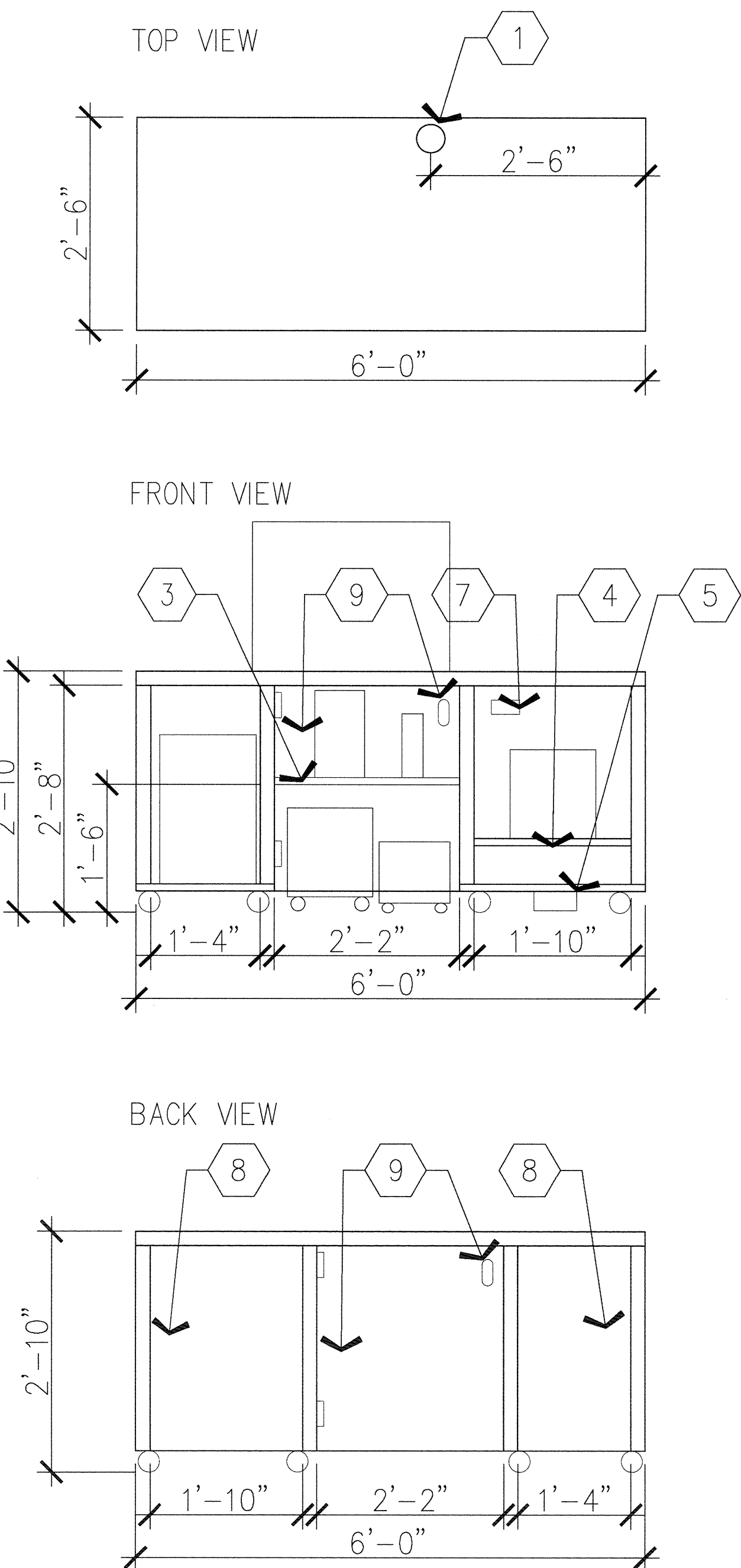
3/4" = 1'-0"
DRAWING TITLE

LOWER LEVEL INTERIOR
ELEVATIONS

DRAWING NUMBER

A9.0B

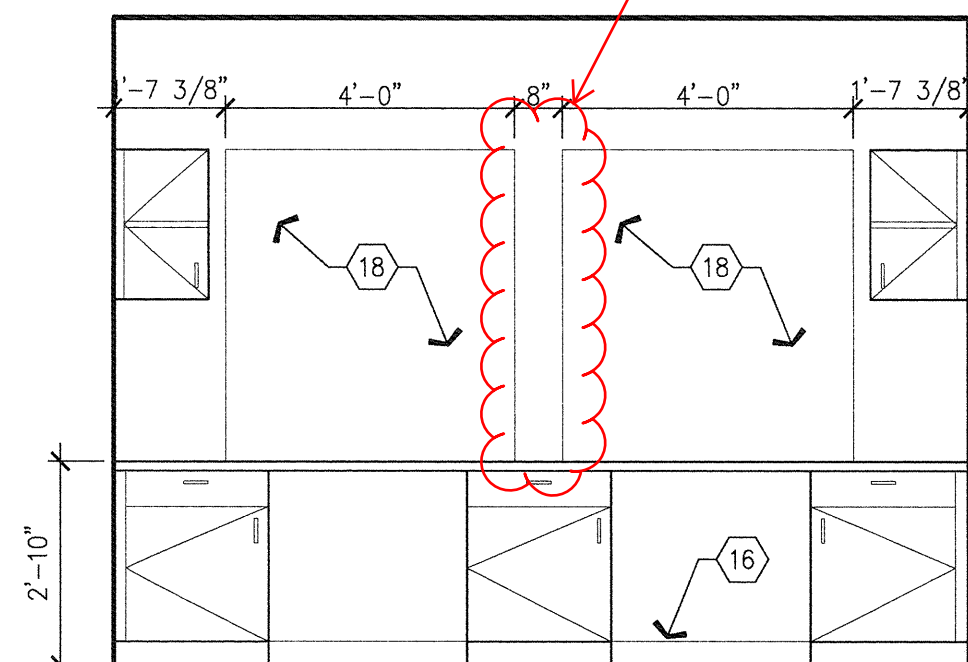
1. 4" diameter grommet for wiring/tubing.
2. 3" diameter grommet for wiring/tubing.
3. Pull out shelf, 26"W x 24"D.
4. Pull out shelf, 22"W x 24"D.
5. Location of floor drain, 3" clearance required.
6. Monitors on movable arms.
7. Provide phone and LIS data connection jack.
8. Removable back.
9. Door, 28"W x 32"H.
10. Vented back, 9"W x 18"H.
11. 100 Voltage electrical box with 2 outlets.
12. Shelf, 26"x24"x1".
13. 2" Countertop, must be able to support 350lbs.
14. 2" Side supports, must be able to support 350lbs.
15. Approximately 2" wheels, 6-9 total as needed, must be able to support 350lbs.
16. Scheduled base.
17. Transaction counter.
18. Open to other side.
19. Closure panel, sloped with Plastic Laminate finish.
20. Shoe space. See detail A6/A10.3
21. Personal effects storage units, Type "C". See detail A4/A11.8
22. This unit provide accessible unit. See detail A4/A11.8
23. Bench H.C. Compliant.



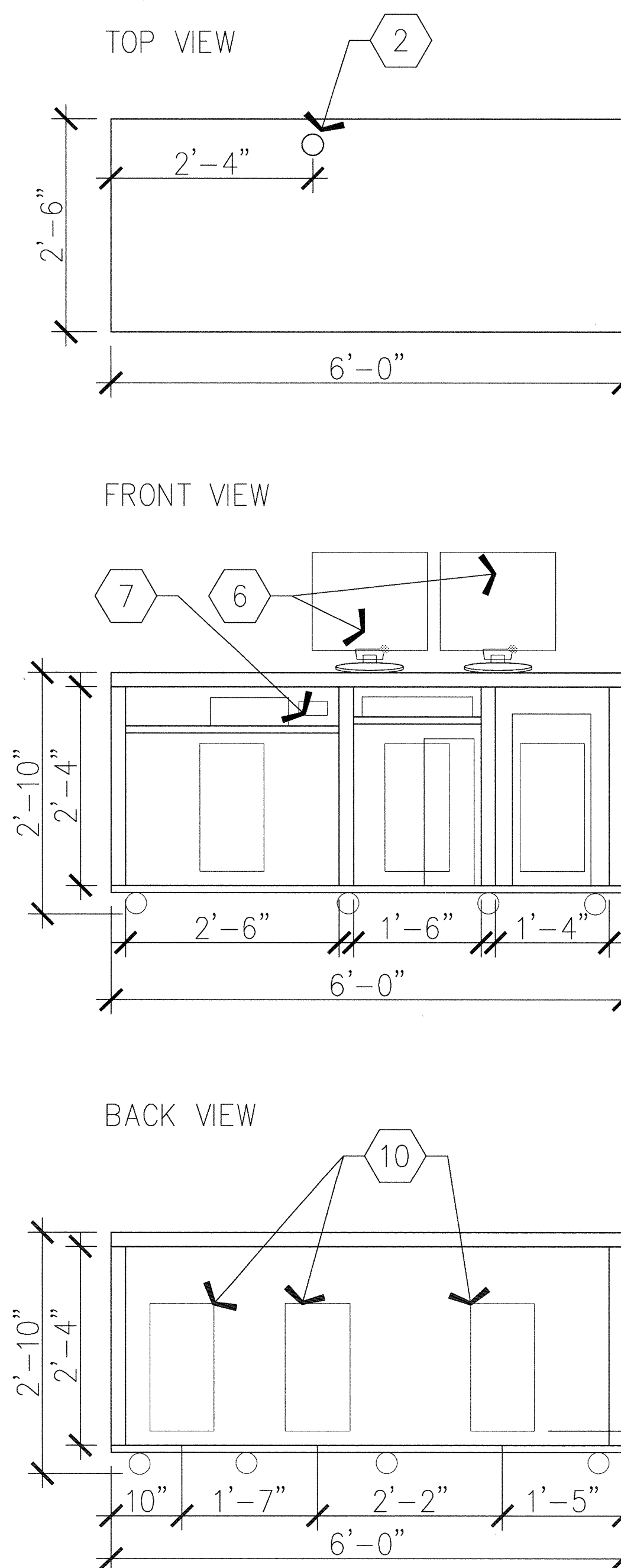
C6 CORE LAB - CART #1
3/4" = 1'-0"

RFI 1227

RFI 3633: Delete
center wall and keep
one opening

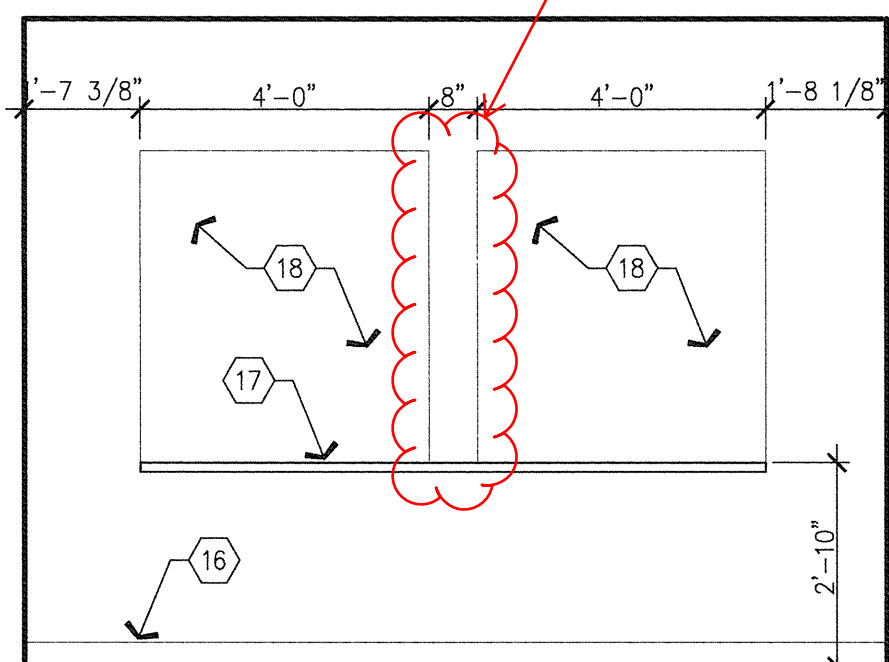


B6 PHLEBOTOMY RECEPTION
3/8" = 1'-0"

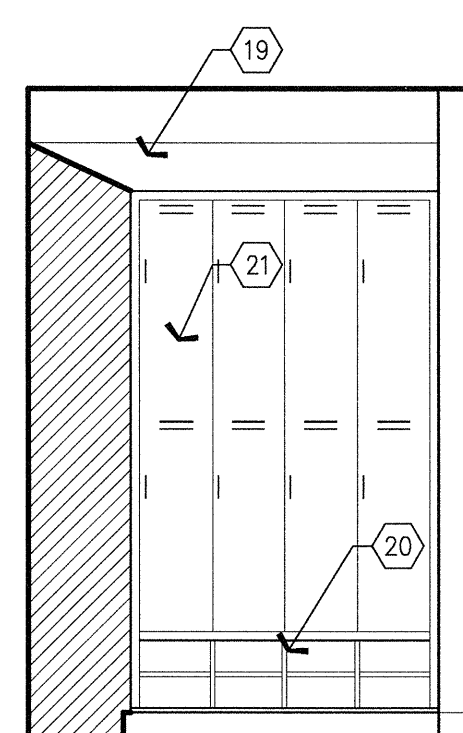


C4 CORE LAB - CART #2
3/4" = 1'-0"

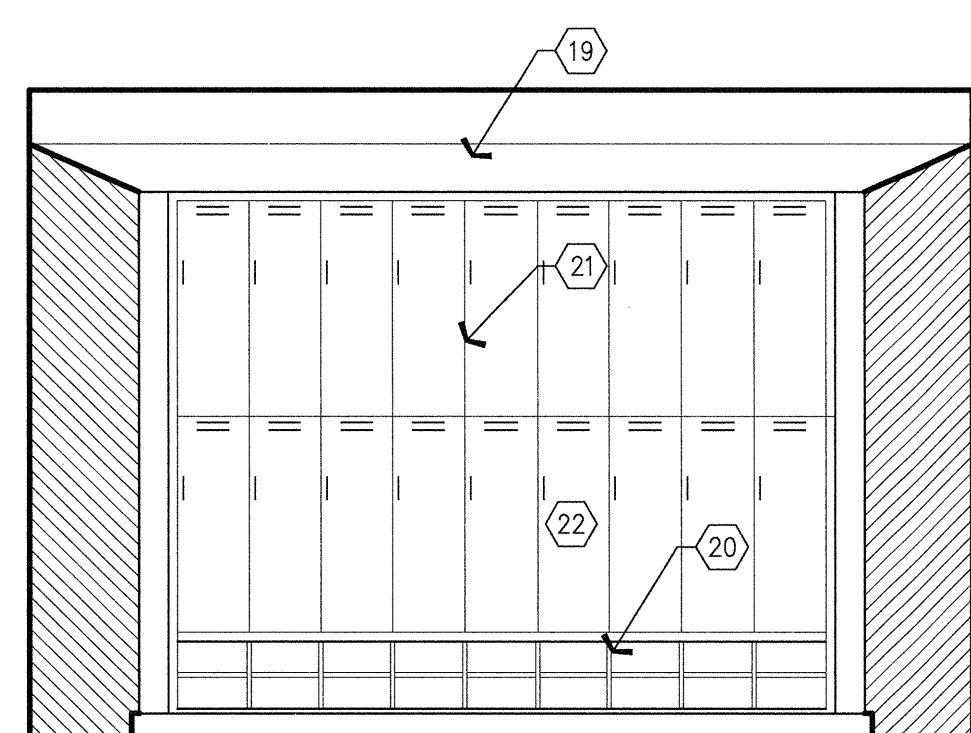
RFI 3633: Delete
center wall and keep
one opening



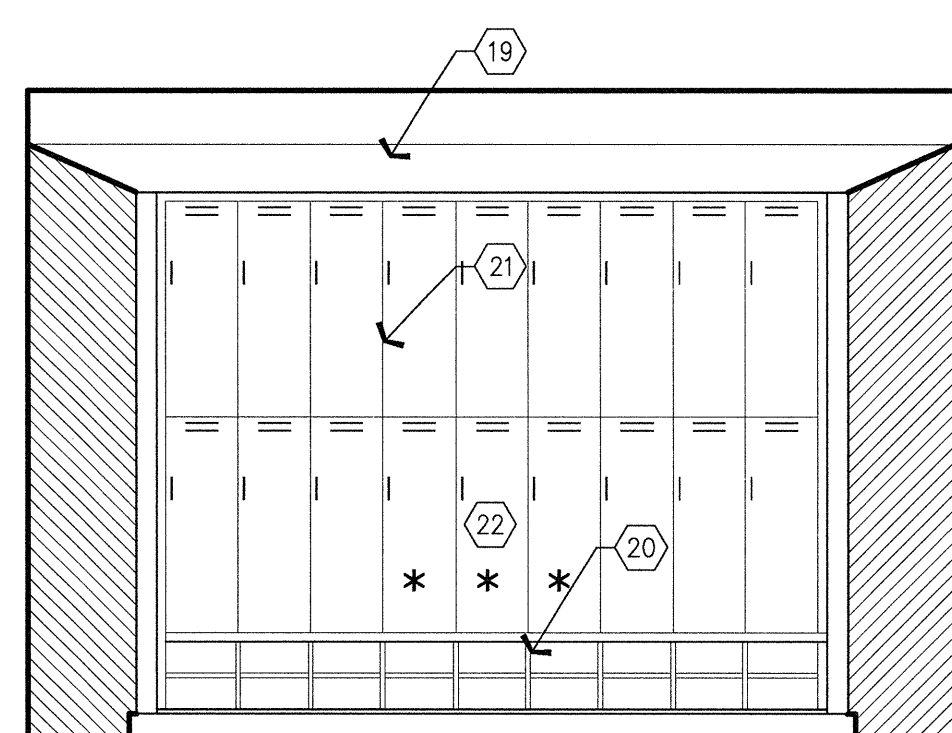
B5 PHLEBOTOMY WAITING
3/8" = 1'-0"



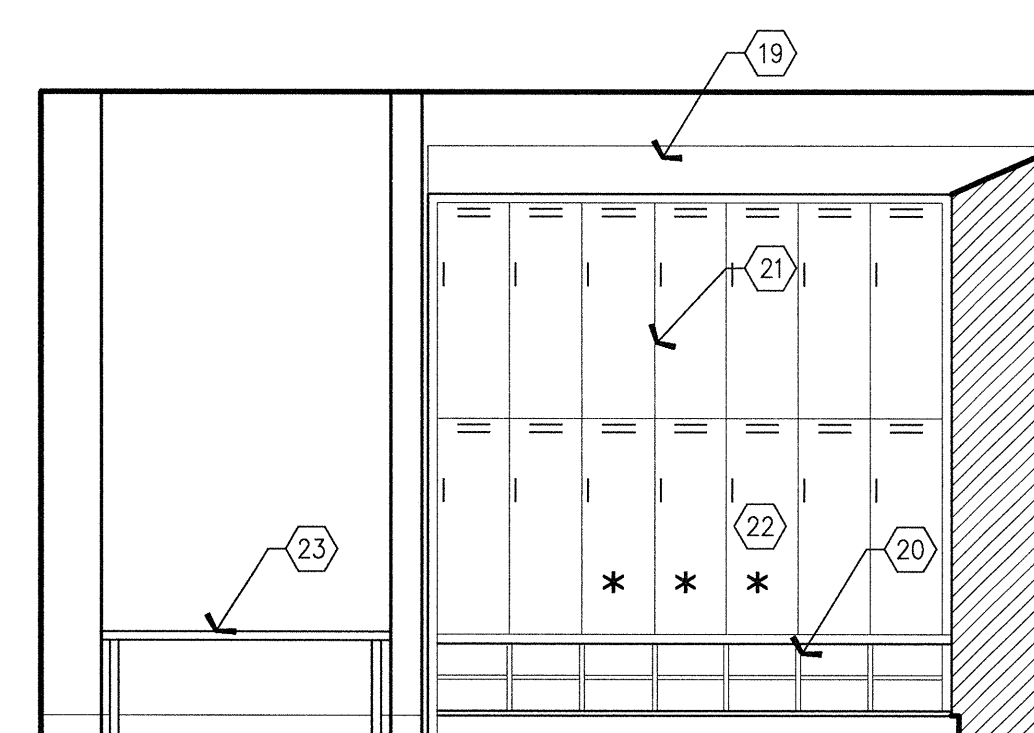
A5 LOCKERS ELEVATION
3/8" = 1'-0"



A4 LOCKERS ELEVATION
3/8" = 1'-0"



A3 LOCKERS ELEVATION
3/8" = 1'-0"



A2 LOCKERS ELEVATION
3/8" = 1'-0"

B1 NOTES TO SHEET
3/8" = 1'-0"

A1 GENERAL NOTES