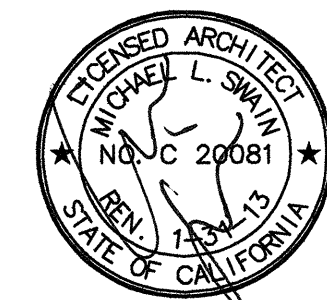


FKP Architects

ARCHITECT OF RECORD
Paul C. Gloriod

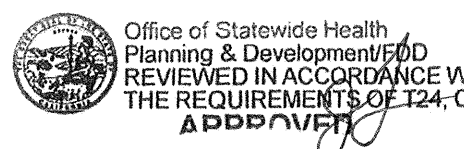


Changes on these drawings do not consist of
materially altered changes to approved drawings
and don't require a change order.
OSHPD review ACO
OSHPD review FLSO
OSHPD review DSE

REVISIONS

50A 04/17/12 CHANGE ORDER #360

APPROVAL



CHANGE ORDER 360
INSTRUCTION BULLETIN
DEFERRED APPROVAL
ADDENDUM

PROJECT NAME Y&P 2012-0431

CHILDREN'S HOSPITAL
OF ORANGE COUNTY

455 S. Main St.
Orange, CA 92668-3874

TOWER II



PROJECT NUMBER

12011.00
Increment #7

OSHPD - PROJECT NUMBER
IL 072072-30

ISSUE
OSHPD PERMIT

DATE

01/27/2010

SCALE

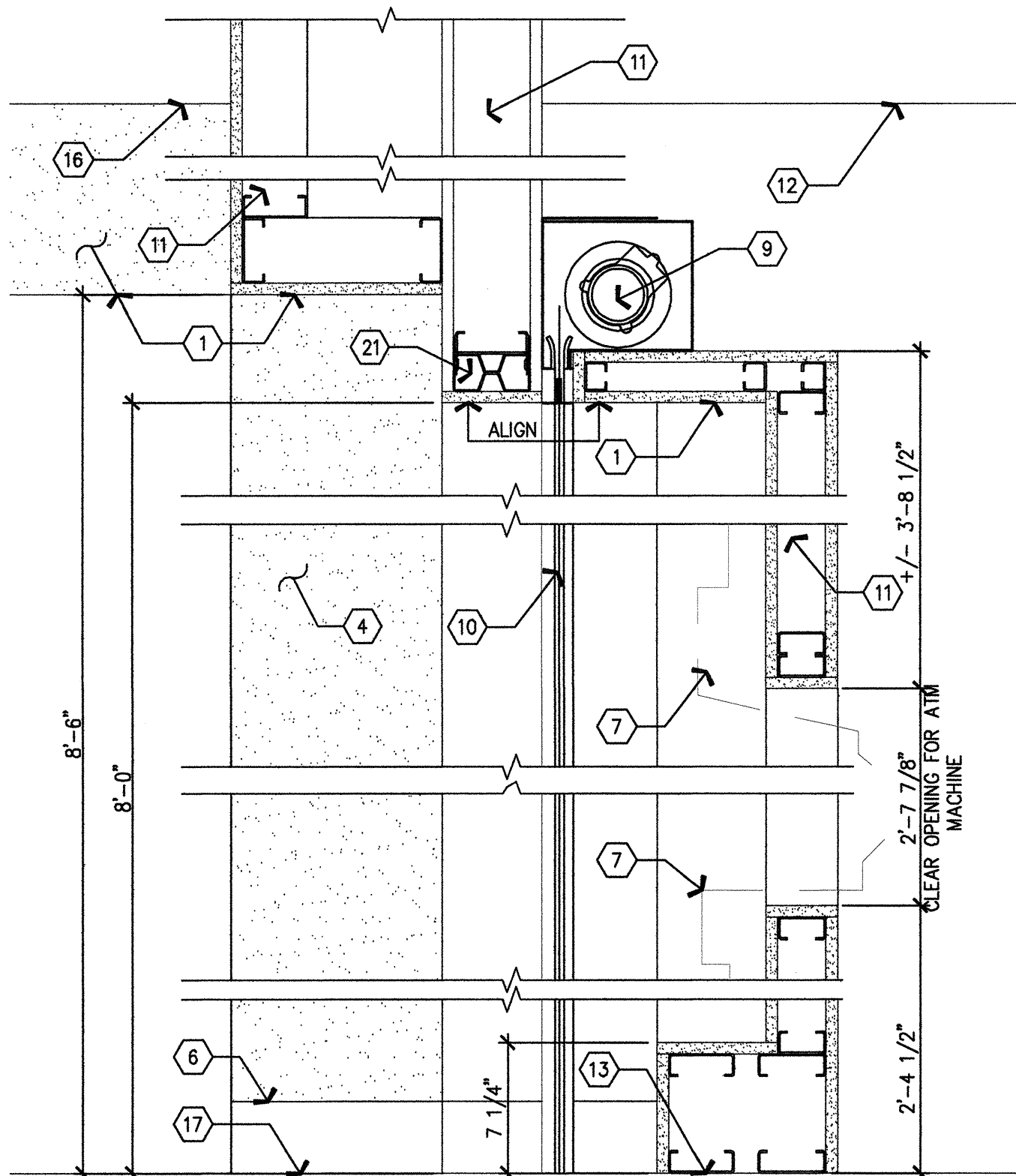
3/8 = 1'-0"

DRAWING TITLE

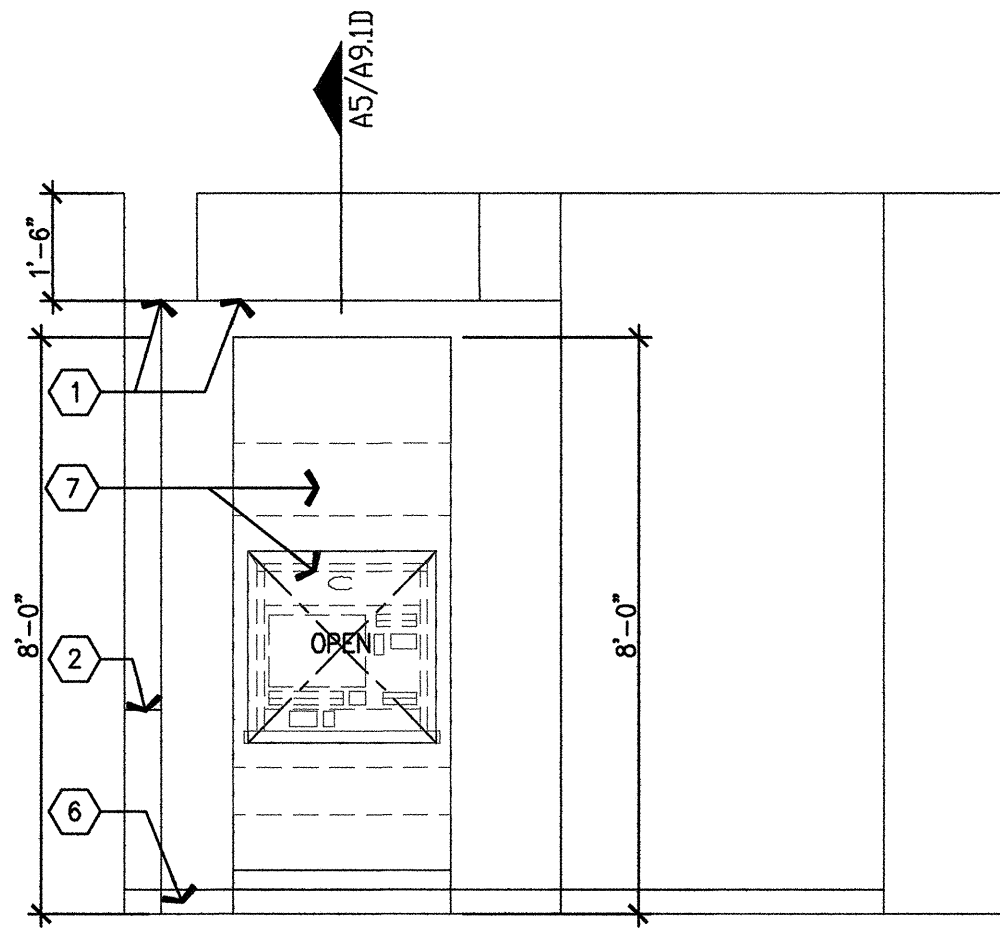
FIRST FLOOR INTERIOR
ELEVATIONS

DRAWING NUMBER

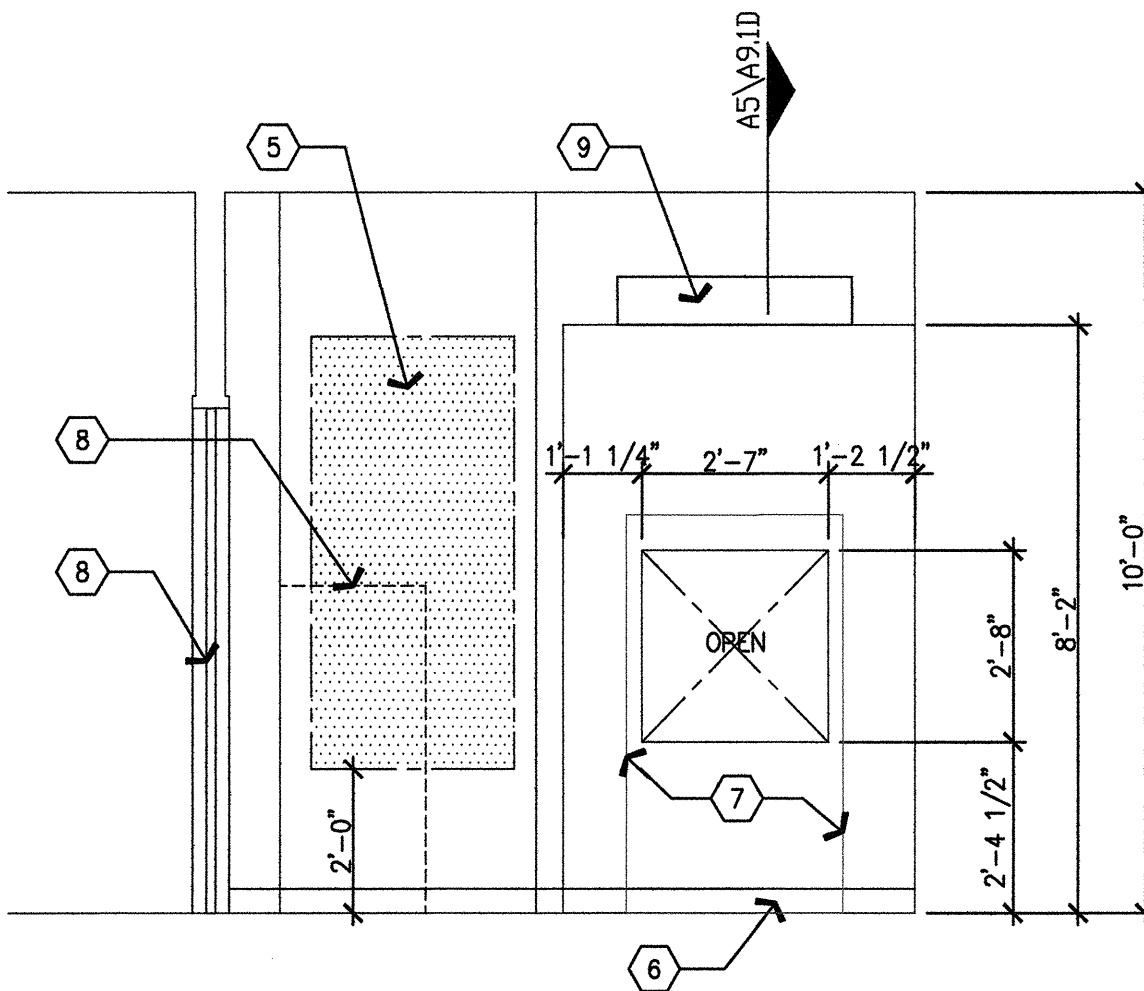
A9.1D



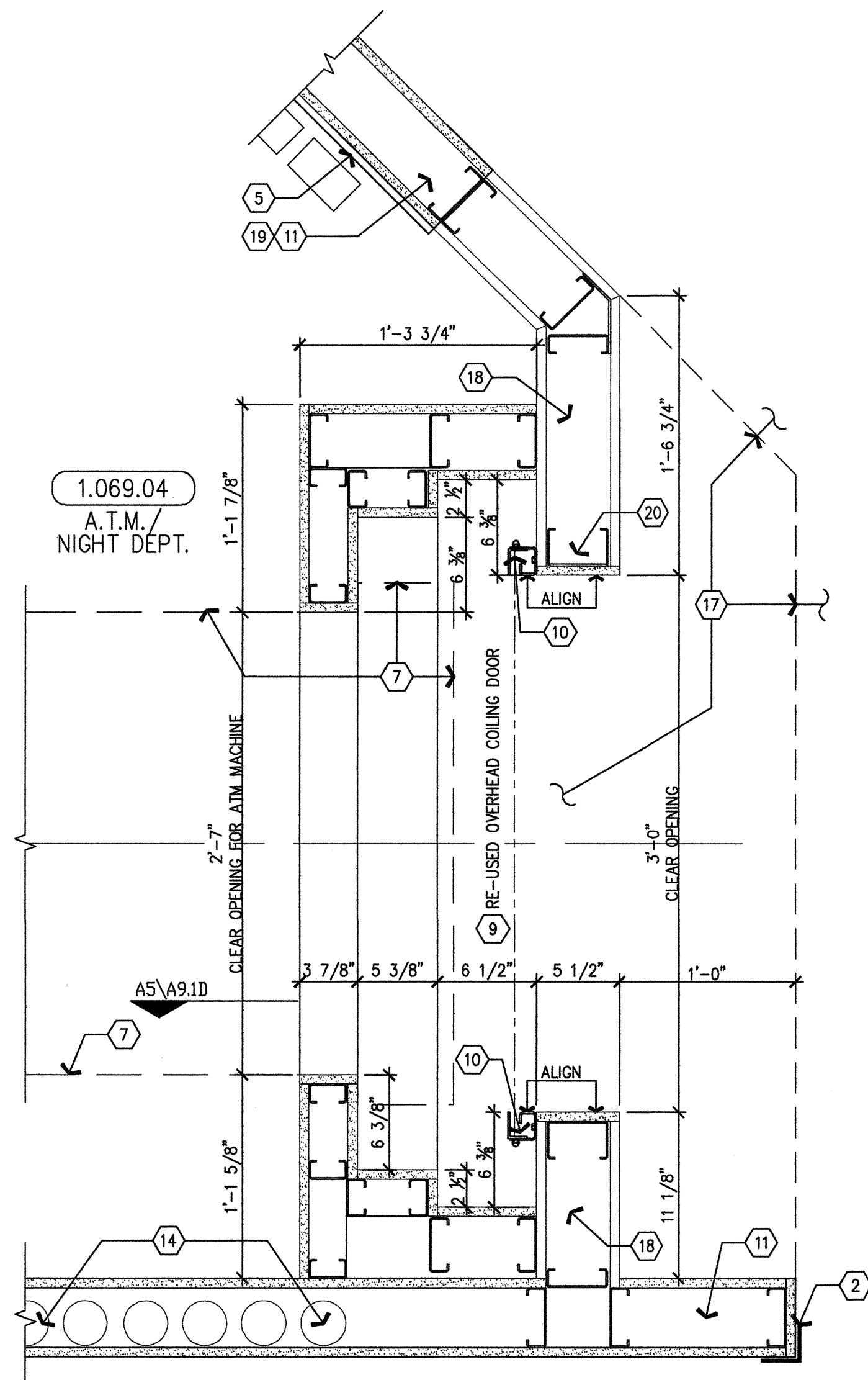
A5 ATM MACHINE SECTION



A4 ATM MACHINE ELEVATION



A3 ATM MACHINE ROOM ELEVATION



A2 ATM MACHINE- FLOOR LAYOUT

1. Soffit, gypsum ceiling board- painted PT-1.
2. Corner guard, wall mounted. See B4/A11.8 for detail.
3. Handrail/bumper roll, wall mounted. See B4/A11.8 for detail.
4. Face of wing wall at beyond.
5. 4'x8' fire treated plywood backing board (for power/data/phone). Provide backing plate top and bottom per detail A6/A11.3.1.
6. Scheduled base.
7. ATM Machine.
8. Scheduled door.
9. Existing fire-rated overhead ceiling door (to be reused). Tied to fire alarm via smoke detector, auto reset.
10. Existing shutter rail (to be re-used), recessed.
11. Schedule partition- see floor plan.
12. Schedule ceiling- see RCP.
13. For connection detail at floor slab, see B3/A11.3.1 and B5/B6/A11.3.2.
14. Existing domestic hot/ cold water lines and medical gas lines to remain.
15. Existing night drop safe to remain.
16. Patch, repair and prepare existing ceiling where damage occur for new paint to match existing.
17. Patch, repair and prepare existing flooring for new floor finish to match existing at this area and adjacent areas where damage occur.
18. Part of existing wall to remain- patch, repair and prepare for new point finish.
19. In-fill existing ATM opening- see floor plan.
20. Kong Stud- see A5C/A11.11
21. Pro-X header- see B5/A11.11

A1 NOTES TO SHEET