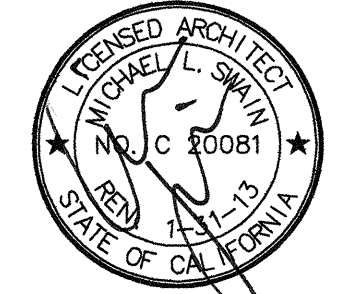


FKP Architects

ARCHITECT OF RECORD
Paul C. Gloriot



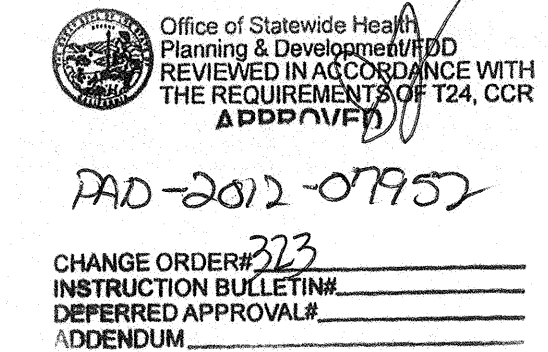
Changes on these drawings do not consist of
materially altered changes to approved drawings
and don't require a change order.
OSHPD review ACO
OSHPD review FLSO
OSHPD review DSE

REVISIONS

44	05/28/10	ASI #08
43	10/25/10	CO #87
42	04/28/12	CO #323

RFI 2505
Headwall
configuration

APPROVAL



PROJECT NAME
**CHILDREN'S HOSPITAL
OF ORANGE COUNTY**
455 S. Main St.
Orange, CA 92668-3874

TOWER II



PROJECT NUMBER
**12011.00
Increment #7**

OSHPD - PROJECT NUMBER
IL 072072-30

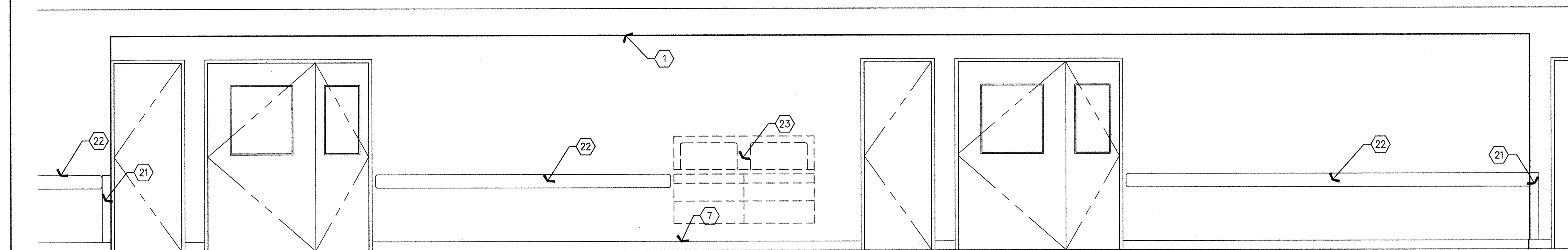
ISSUE
OSHPD PERMIT

DATE
01/27/2010

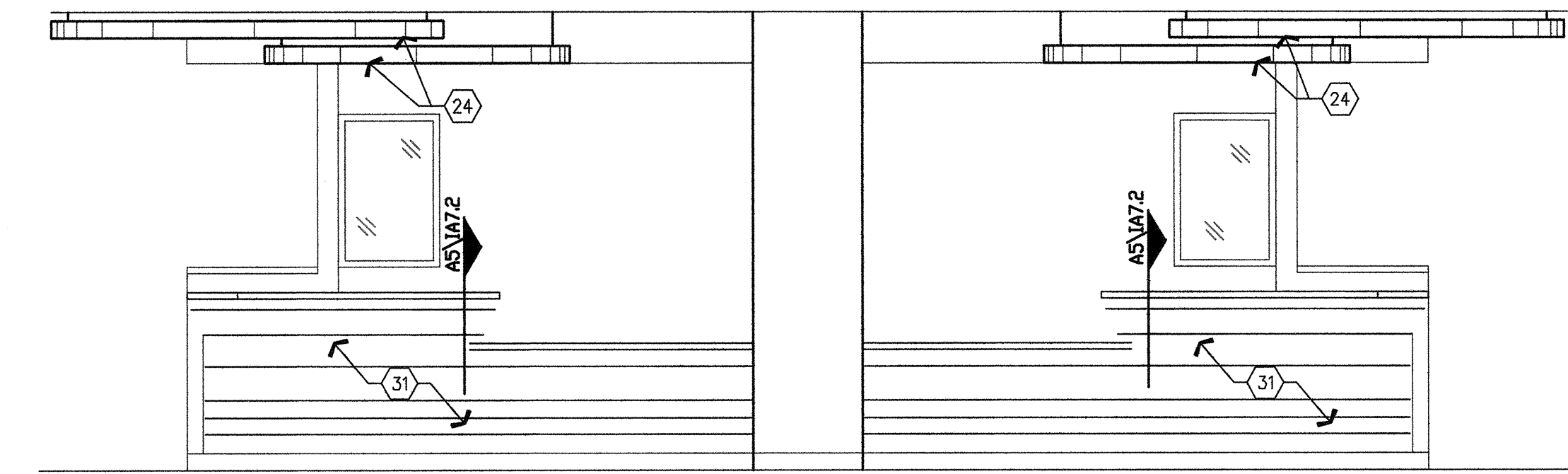
SCALE
3/8" = 1' - 0"
DRAWING TITLE

DRAWING NUMBER

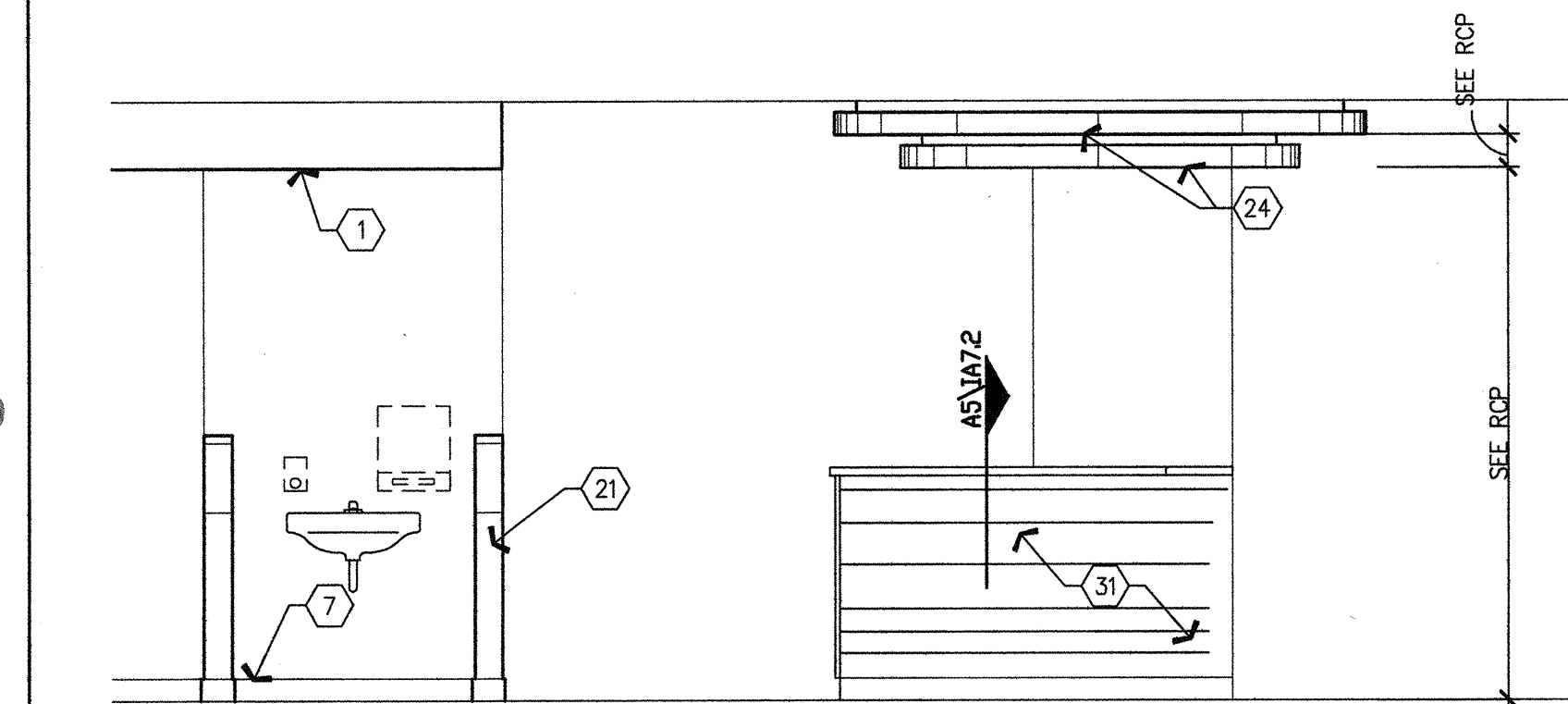
A9.3B



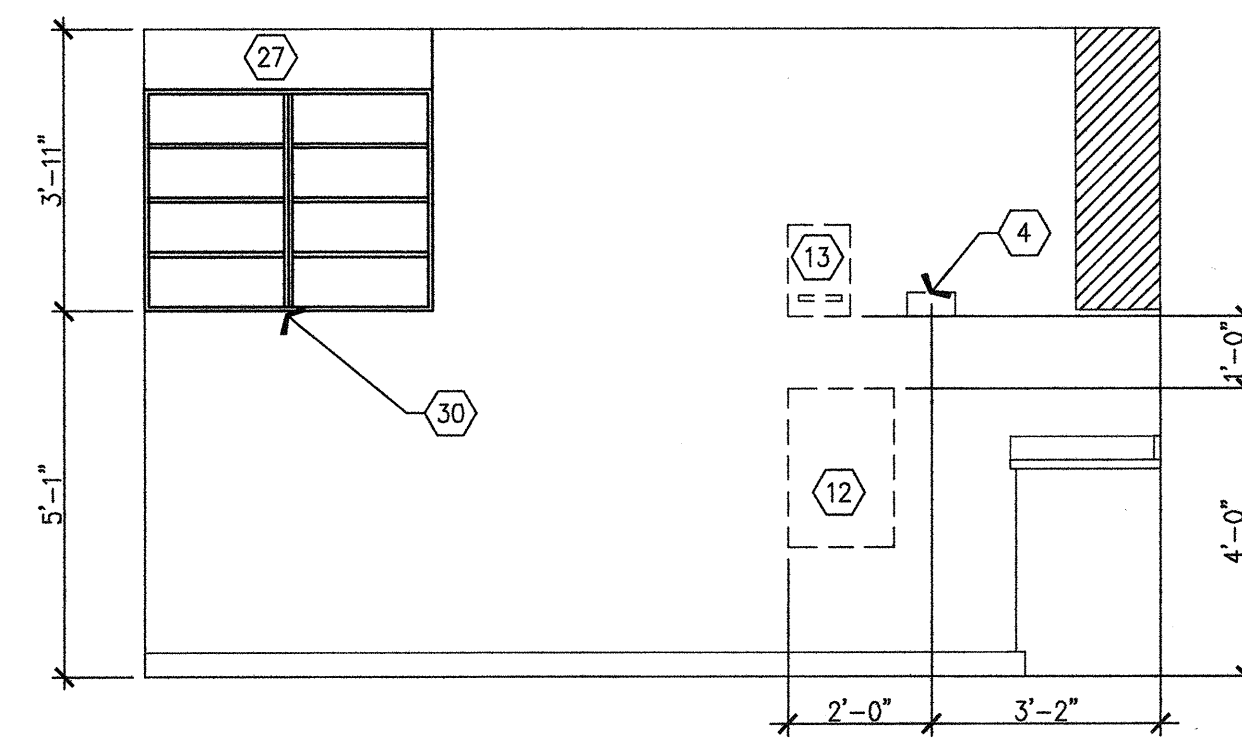
E6 ALCOVE (3.001.37.A) SOUTH WALL
36' x 1'-0"



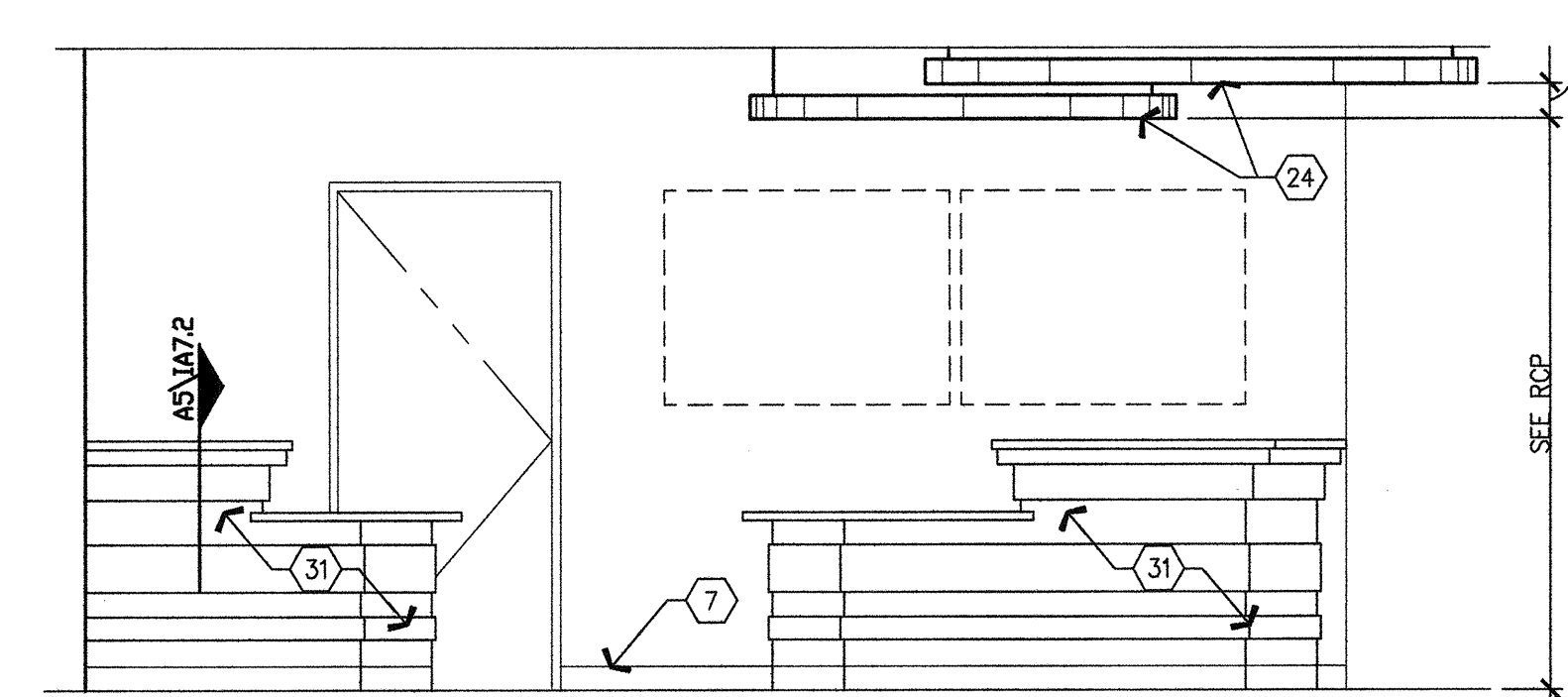
E2 NURSE STATION (3.046.12.A-11.A) EAST SIDE
36' x 1'-0"



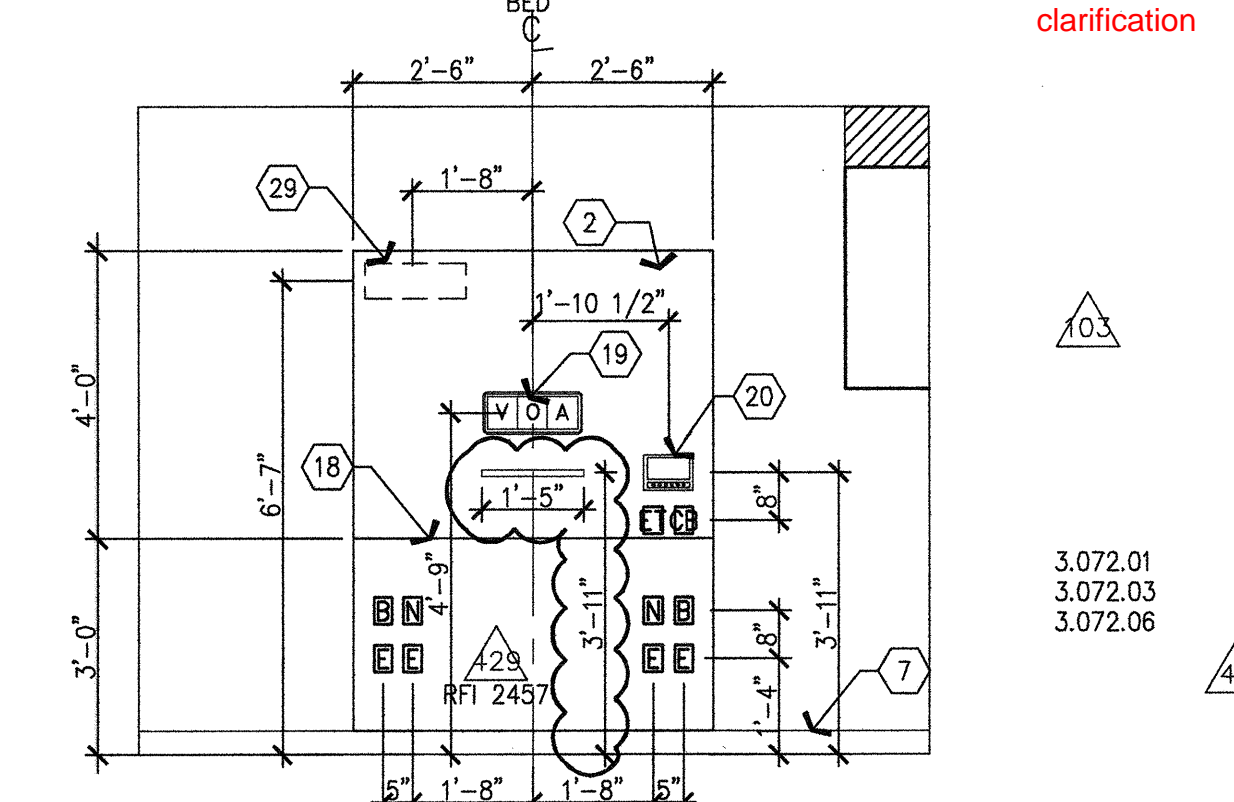
D6 NURSE STATION (3.046.09.A) NORTH SIDE
36' x 1'-0"



D4 ECHO EXAM (3.072.01) SIDEWALL
36' x 1'-0"



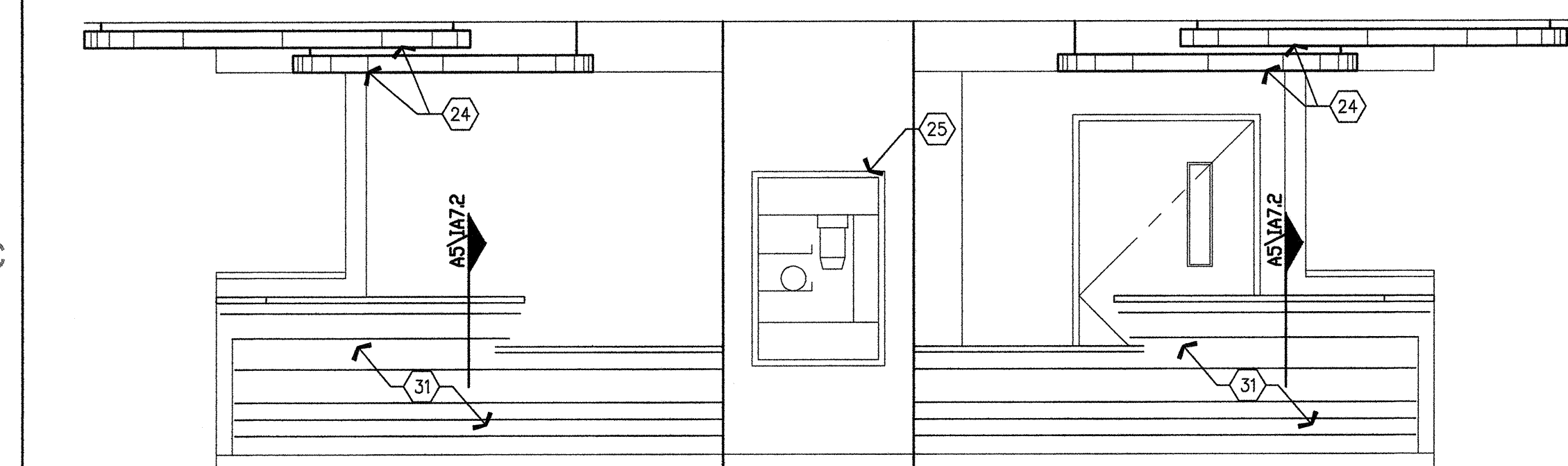
D3 OR CONTROL (3.001.45.A) EAST SIDE
36' x 1'-0"



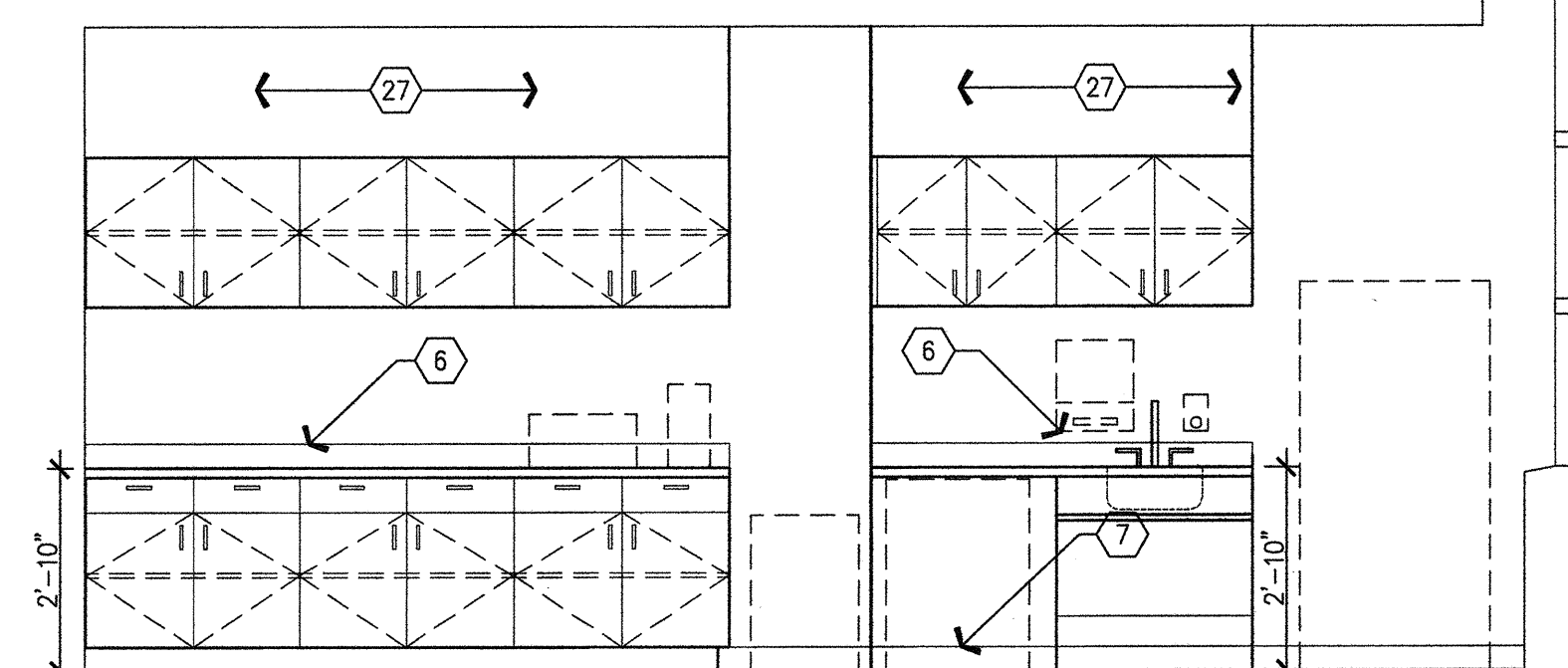
D1 TYPICAL ECHO EXAM HEADWALL
36' x 1'-0"

RFI 2457
ERS rail
clarification

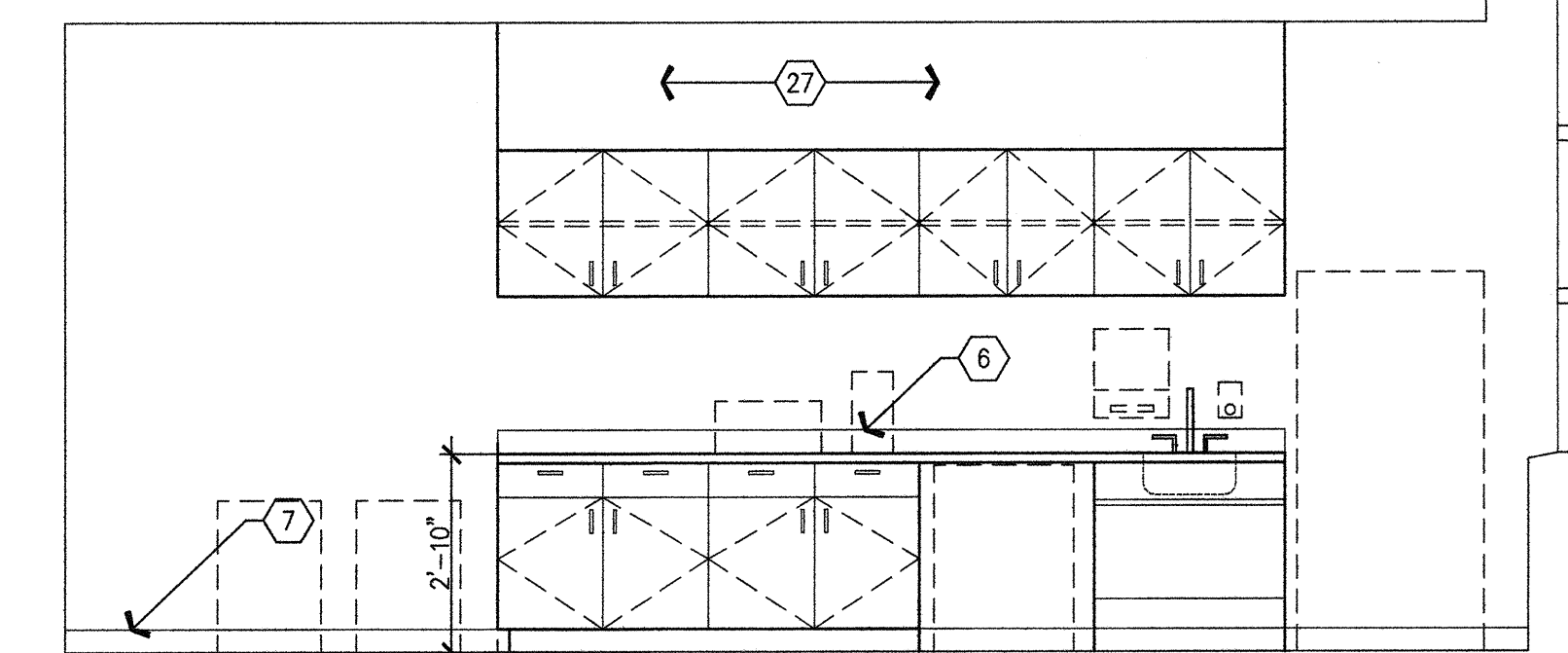
RFI 2962
Patient headwall
constructed at 1 1/4"
from face of drywall to
face of p-lam



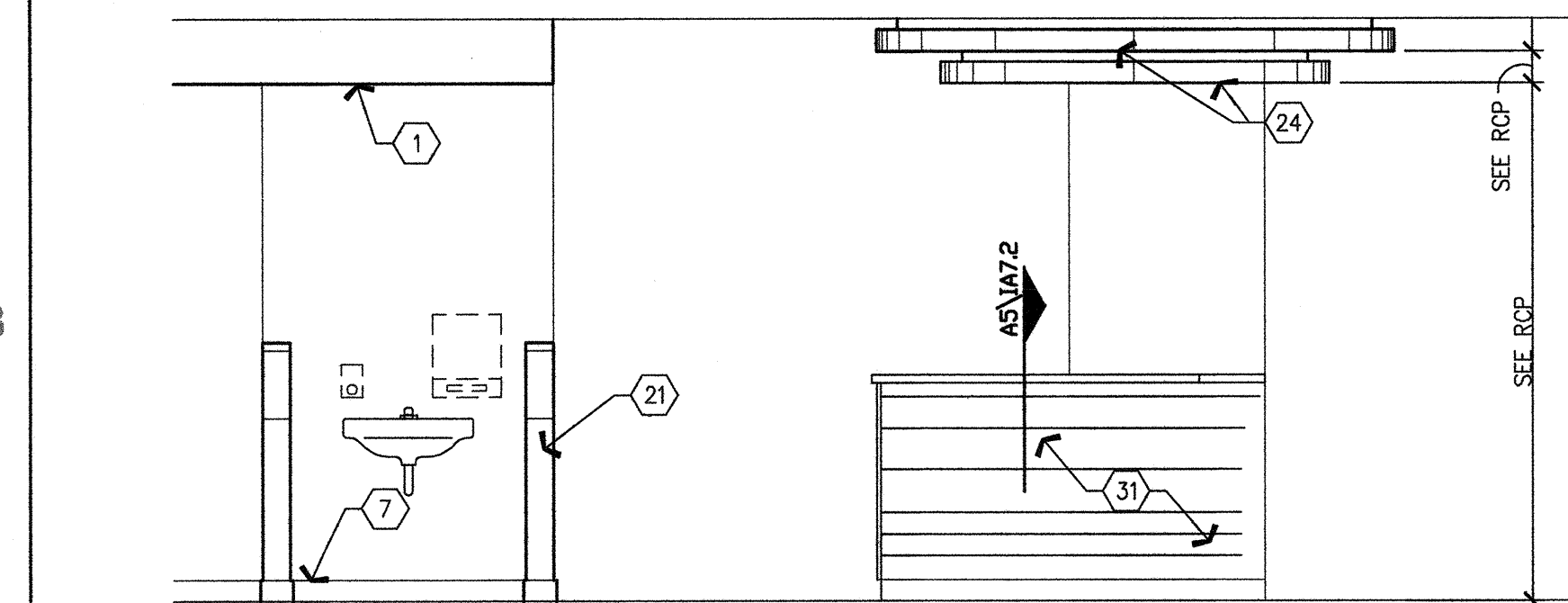
C6 NURSE STATION (3.046.08.A) WEST SIDE
36' x 1'-0"



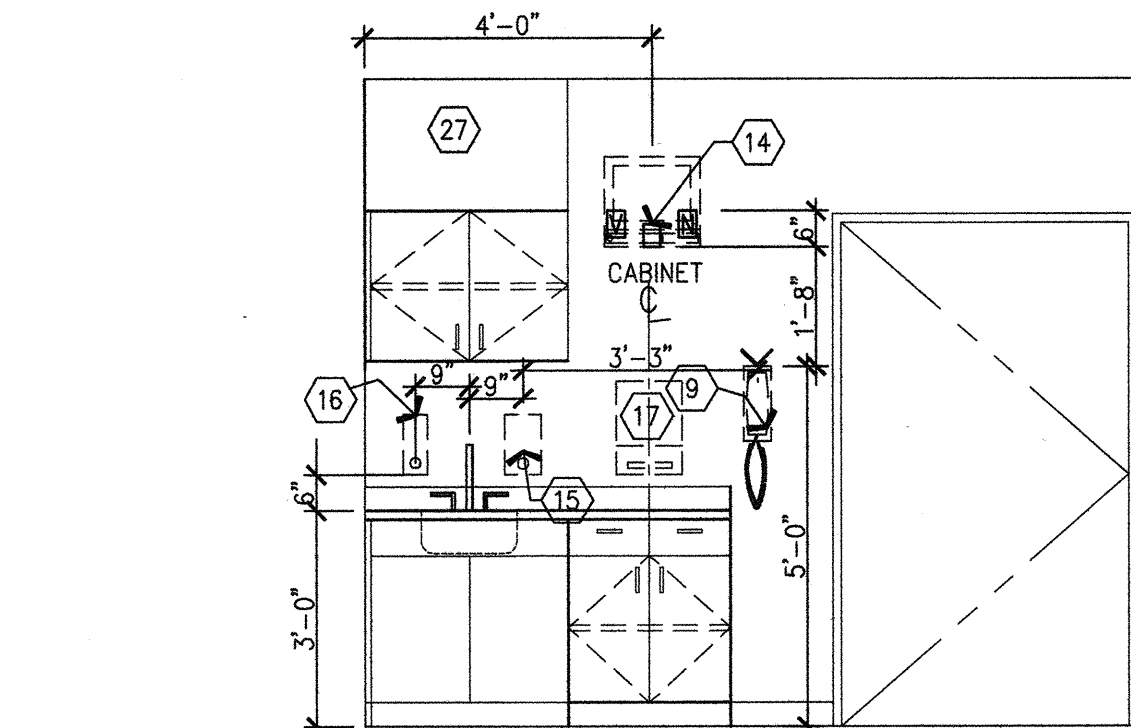
C4 STAFF LOUNGE (3.001.50) W. WALL
36' x 1'-0"



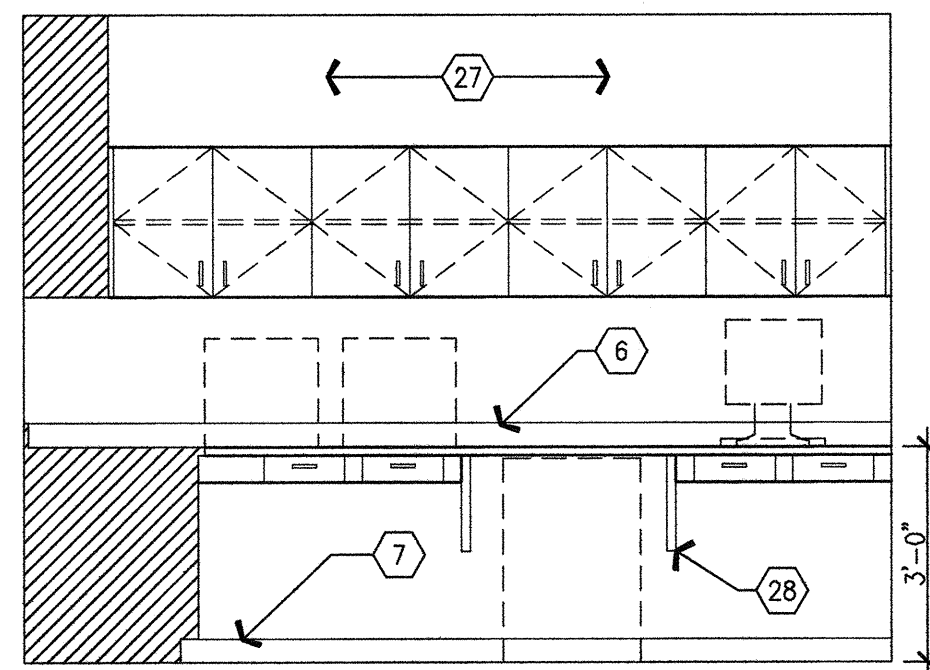
C2 LOUNGE (3.001.52) WEST WALL
36' x 1'-0"



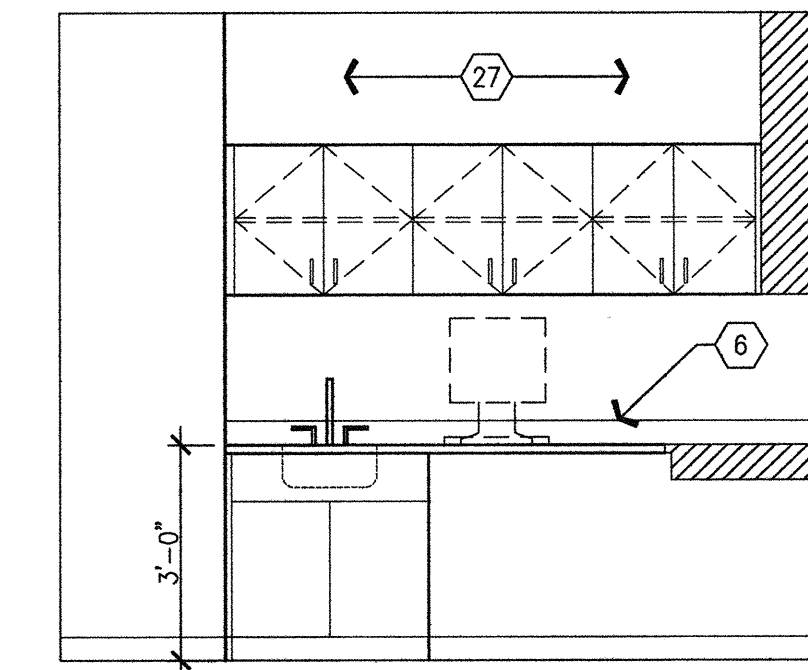
B6 NURSE STATION (3.046.11.A) SOUTH SIDE
36' x 1'-0"



B5 ECHO EXAM (3.072.01) BACKWALL
36' x 1'-0"

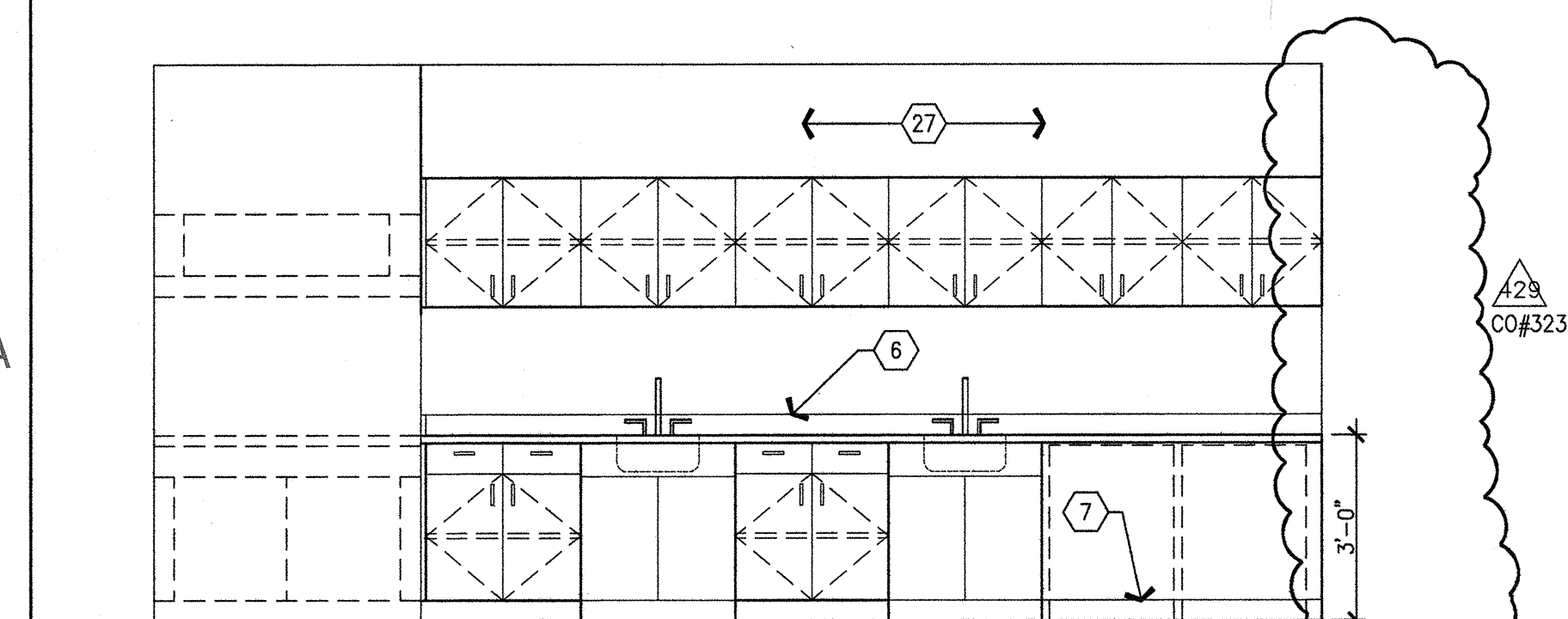


B4 POINT OF CARE (3.046.01) W. WALL
36' x 1'-0"

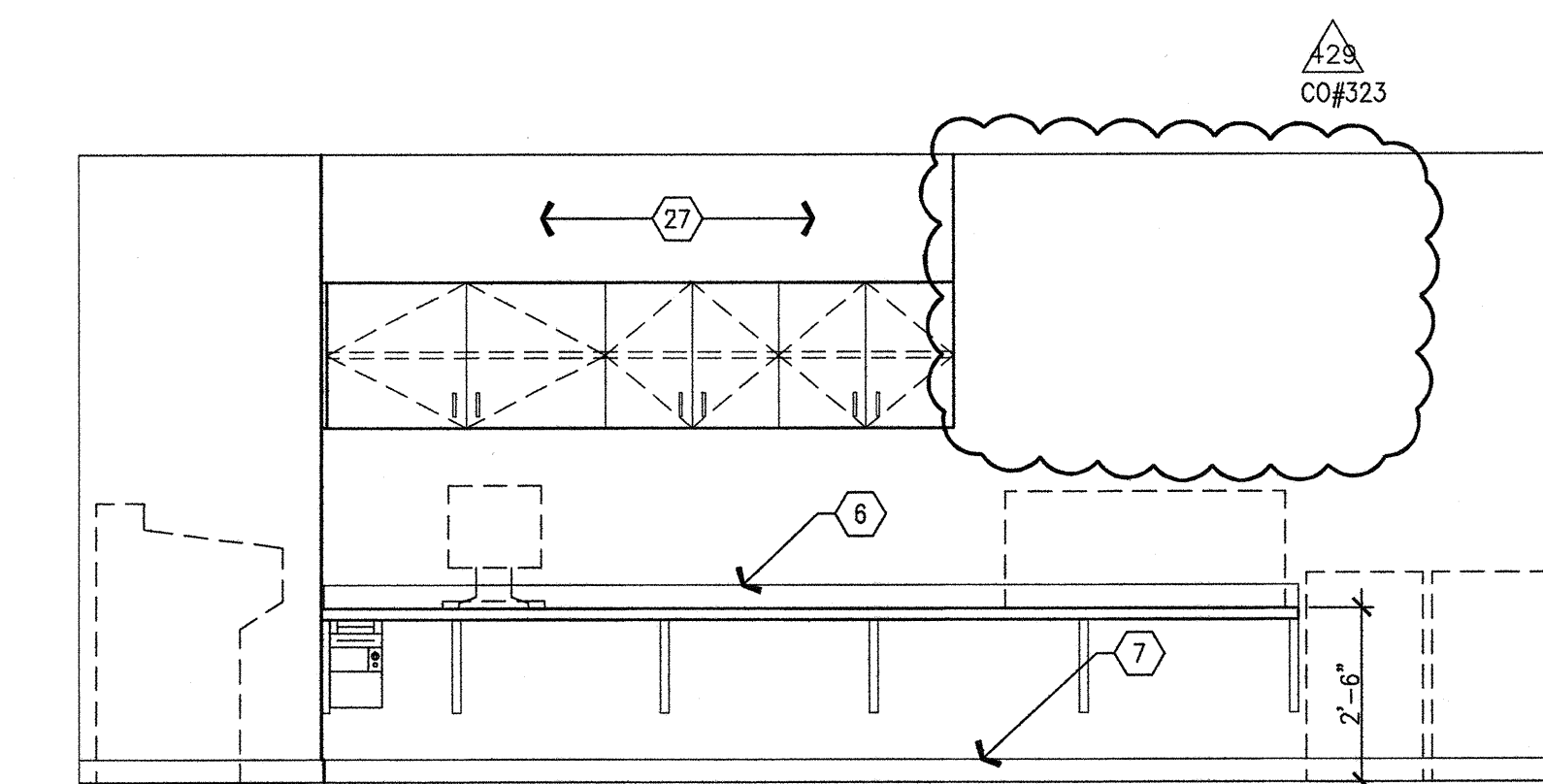


B3 POINT OF CARE (3.046.01) S. WALL
36' x 1'-0"

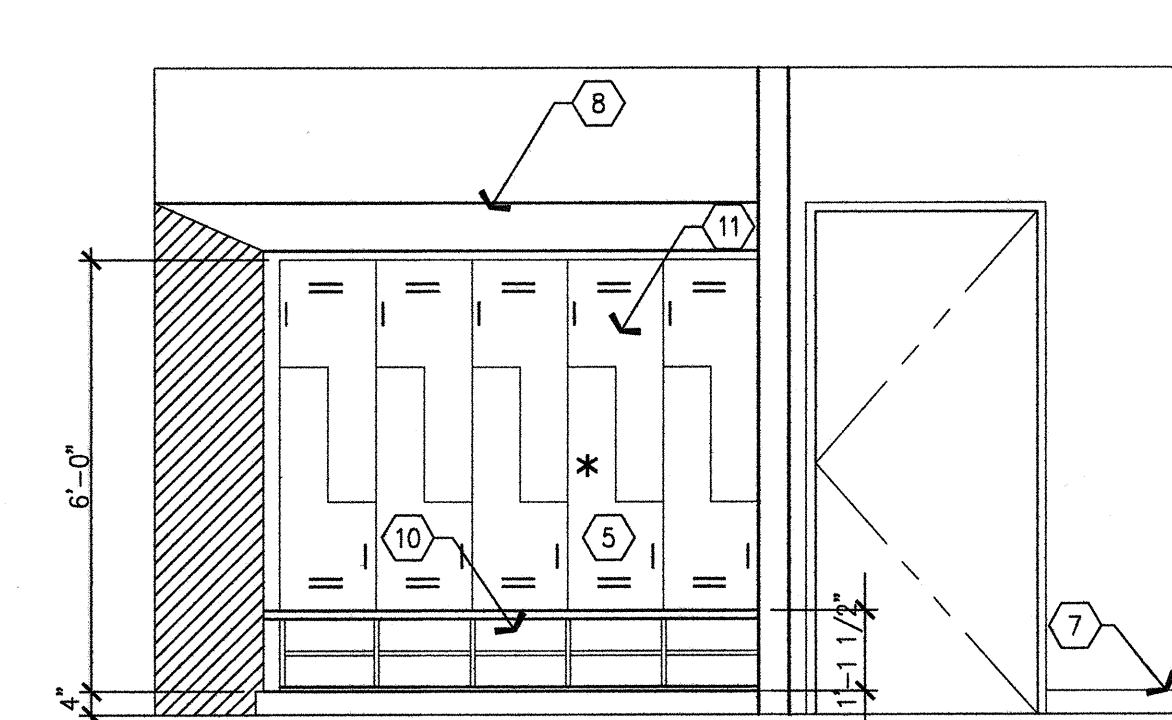
1. Gypsum board, furr down.
2. Wall panel, 1/2" fire-resistant plywood, plastic laminate finish. Finish all exposed faces and edges.
3. Physiological monitor bracket, wall mounted, provide bracing. See Equipment drawings.
4. Nurse call room status, see Telecom drawings.
5. This unit provide accessible unit.
6. Backsplash, to match counter top.
7. Scheduled base.
8. Closure panel, sloped with plastic laminate finish.
9. Wall mounted phone, see Telecom drawings.
10. Shoe space, see detail A5/A10.3.
11. Personal effects storage units, type F, typical for all staff lockers. See A4/A11.8.
12. Sharps container, see Equipment drawings.
13. Glove dispenser, see Equipment drawings.
14. TV/DVD bracket, wall mounted, provide bracing. See Telecom/Equipment drawings. See A2 & D4/A3.4 Volume 2E.
15. Soap dispenser, see Equipment drawings.
16. Alcohol gel dispenser, see Equipment drawings.
17. Paper towel dispenser, see Equipment drawings.
18. 1/4" x 1/4" reveal, paint black.
19. Medical gases, see Plumbing drawings.
20. Nurse call, see Telecom drawings.
21. Corner guard, wall mounted. See B4/A11.8 for detail.
22. Handrail/crutchrail, wall mounted. See B4/A11.8 for detail.
23. Scrub sink. See Plumbing drawings.
24. Accent clouds, suspended, see detail on A10.1.
25. Pneumatic tube station.
26. Not used.
27. Closure panel & soffit, plastic laminate finish. Finish to match wall cabinets.
28. Countertop support, wall mounted. See E1/A9.0.
29. Code blue timer. See telecom drawings.
30. Probe holder, OFO, wall-mounted below upper cabinet. Provide blocking see A5/A11.3.1.
31. Nurse Station Desk. See Tenant Improvement (Interior Finish), Increment #7, Volume 2D.



A6 FROZEN SECTION (3.001.41) EAST WALL
36' x 1'-0"



A4 FROZEN SECTION (3.001.41) WEST WALL
36' x 1'-0"



A3 MALE TOILET (3.001.48) TYP. LOCKERS
36' x 1'-0"

B1 NOTES TO SHEET

A1 GENERAL NOTES

A. Finish and Equipment references can be located in the following documents:
1. Equipment drawings and workbook documents - Inc. #7, Vol. 2E.
2. Tenant Improvement (Interior Finish) Inc. #7, Vol. 2D.