

FKP Architects

ARCHITECT OF RECORD
Paul C. Gloriot

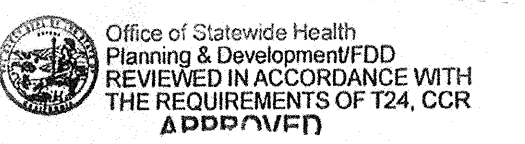


Changes on these drawings do not consist of
materially altered changes to approved drawings
and don't require a change order.
OSHPD review ACO
OSHPD review FLSO
OSHPD review DSE

REVISIONS

4A	05/28/10	ASI #08
4B	10/06/10	ASI #27
10A	10/25/10	CO #87
10B	10/29/10	CO #93
10C	05/28/11	CO #170
28A	07/18/11	CO #226

APPROVAL



CHANGE ORDER # C-4226
INSTRUCTION BULLETIN
DEFERRED APPROVAL
ADDENDUM

PROJECT NAME
**CHILDREN'S HOSPITAL
OF ORANGE COUNTY**
455 S. Main St.
Orange, CA 92668-3874

RECEIVED
**TOWER II August 08 2011
McCarthy**



PROJECT NUMBER

**12011.00
Increment #7**

OSHPD - PROJECT NUMBER
IL 072072-30

ISSUE
OSHPD PERMIT

DATE
01/27/2010

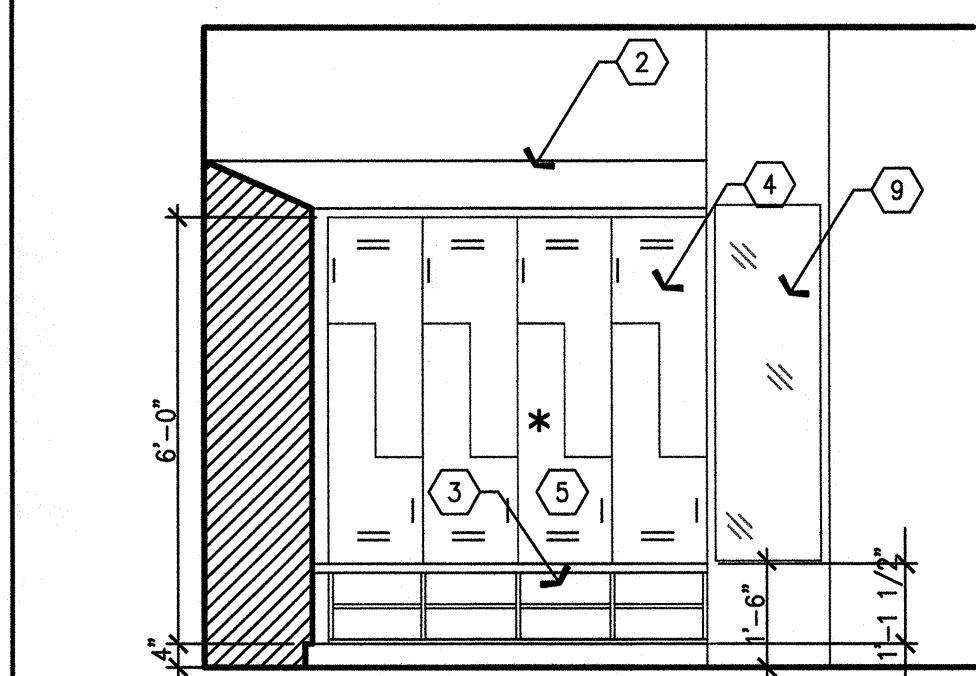
SCALE

3/8"=1'-0"
DRAWING TITLE

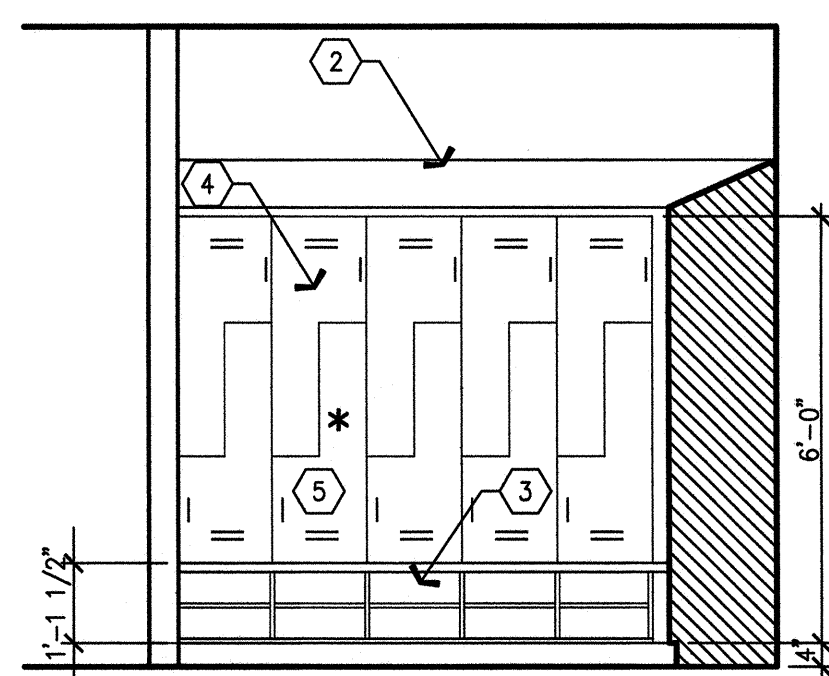
**THIRD FLOOR INTERIOR
ELEVATIONS**

DRAWING NUMBER

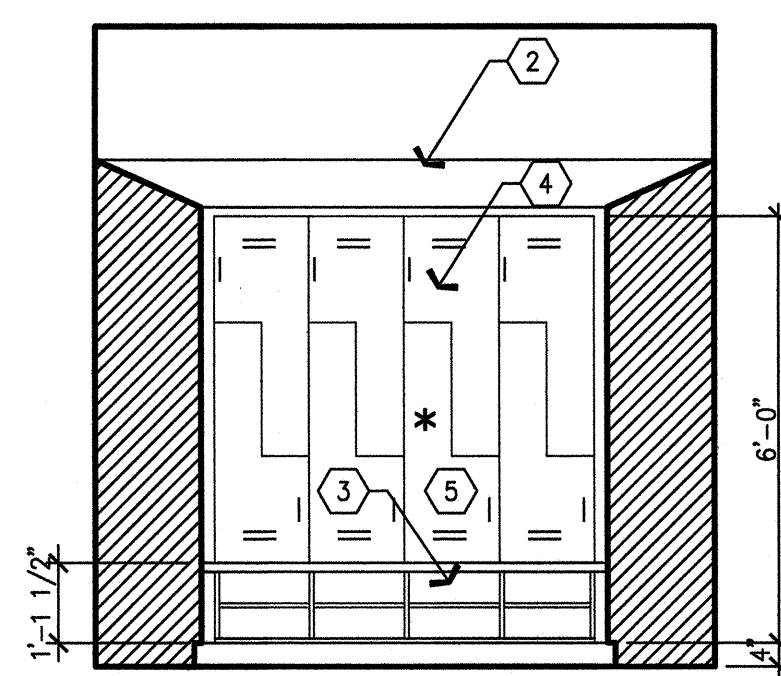
A9.3D



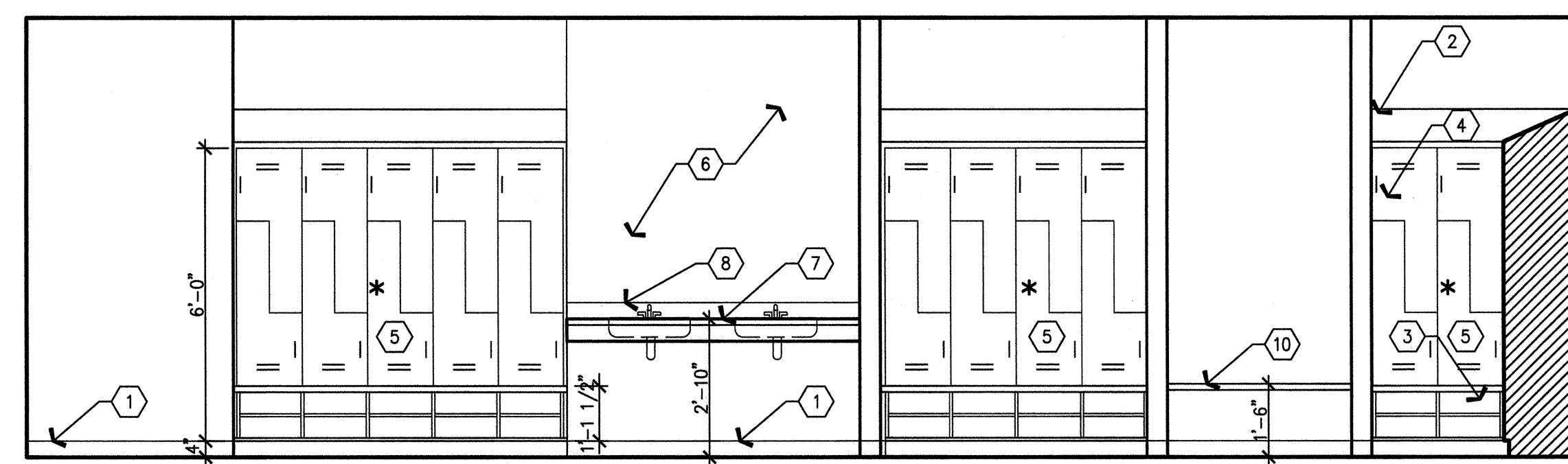
E6 LOCKERS ELEVATION
3/8" = 1'-0"



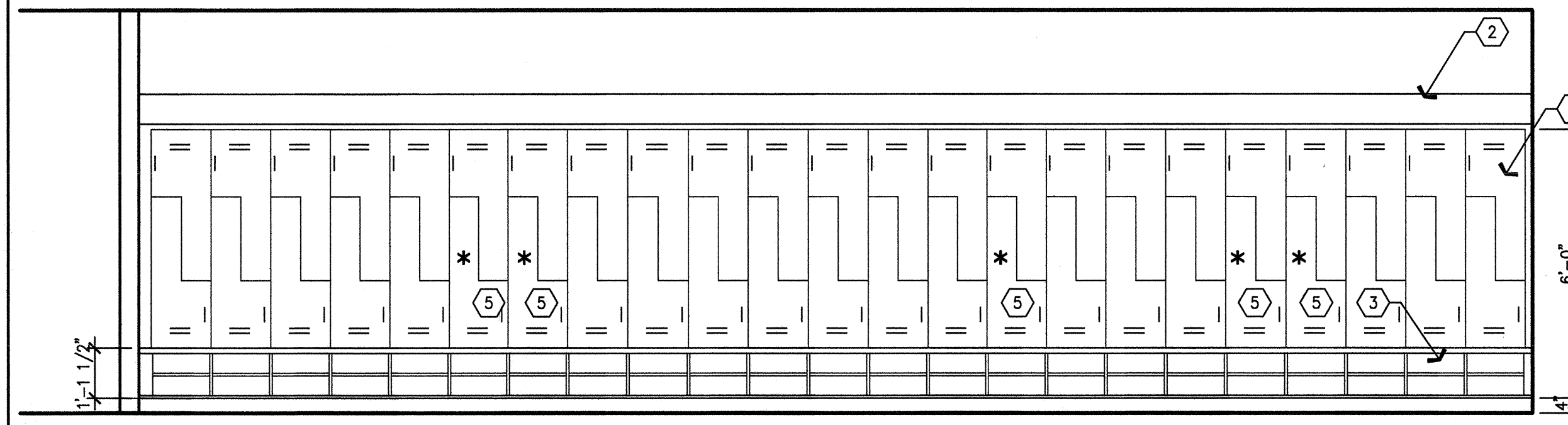
E5 LOCKERS ELEVATION
3/8" = 1'-0"



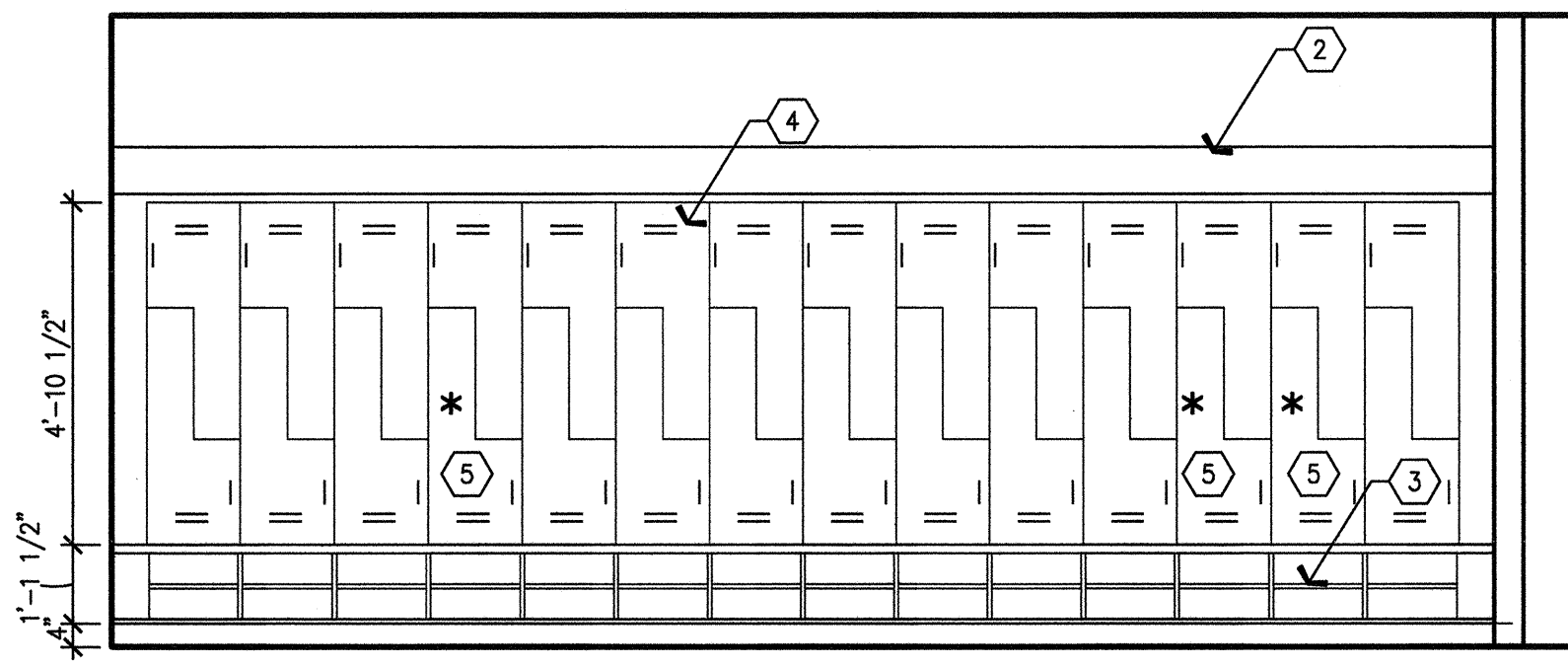
E4 LOCKERS ELEVATION
3/8" = 1'-0"



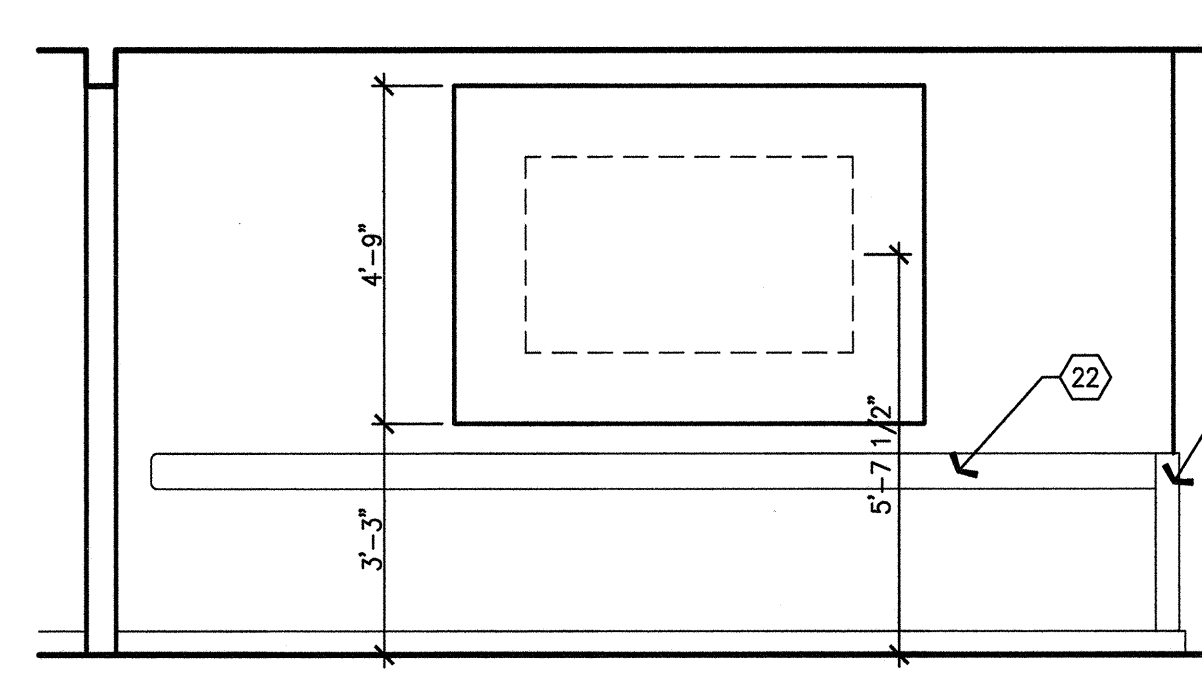
E3 LOCKERS ELEVATION
3/8" = 1'-0"



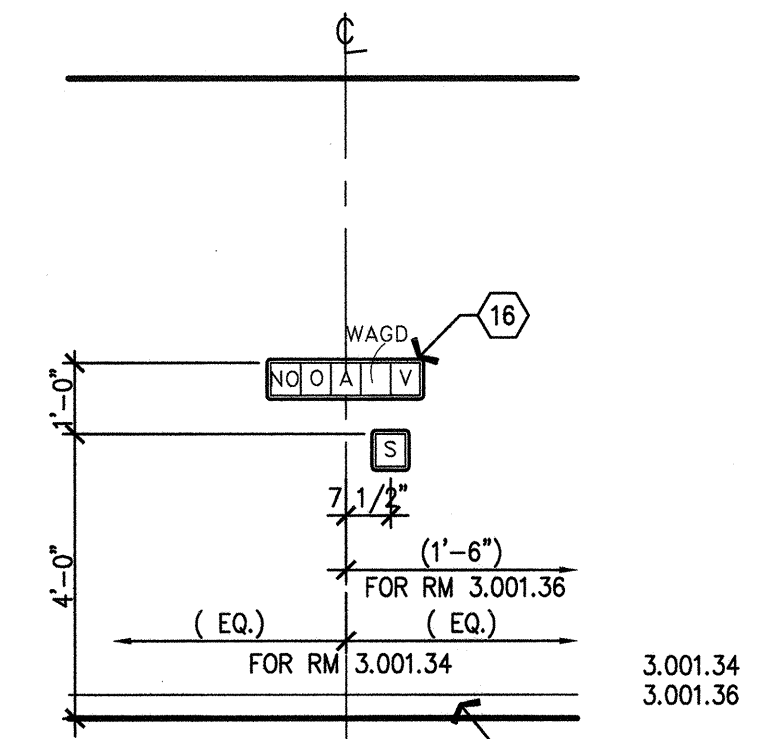
D6 LOCKERS ELEVATION
3/8" = 1'-0"



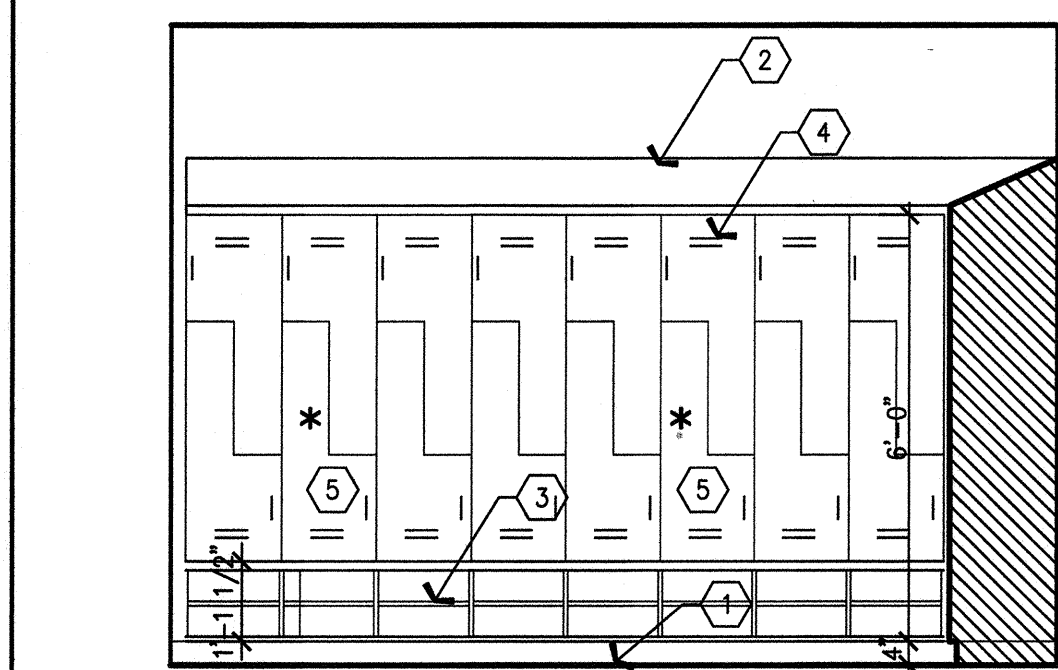
D3 LOCKERS ELEVATION
3/8" = 1'-0"



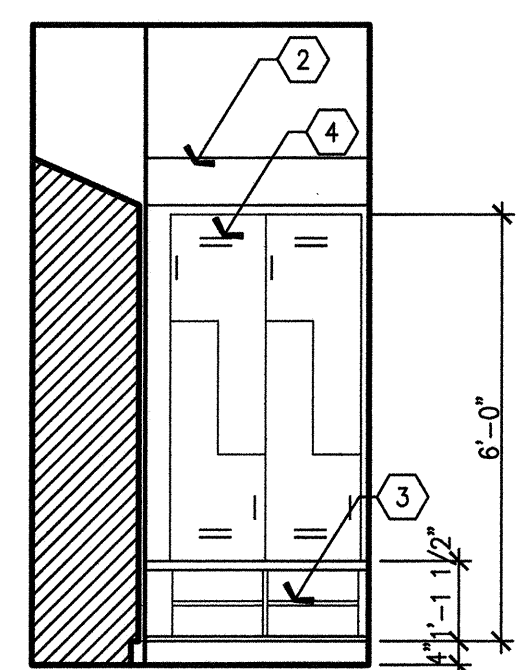
D2 CORRIDOR (3.001.01.C)
3/8" = 1'-0"



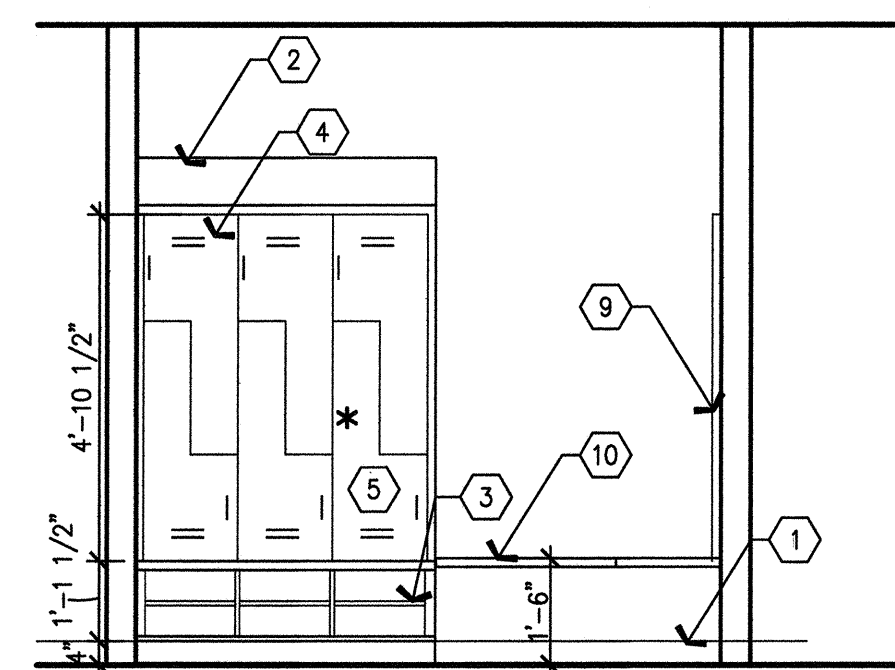
**D1 ANESTHESIA EQUIP. &
WORK ROOMS**
3/8" = 1'-0"



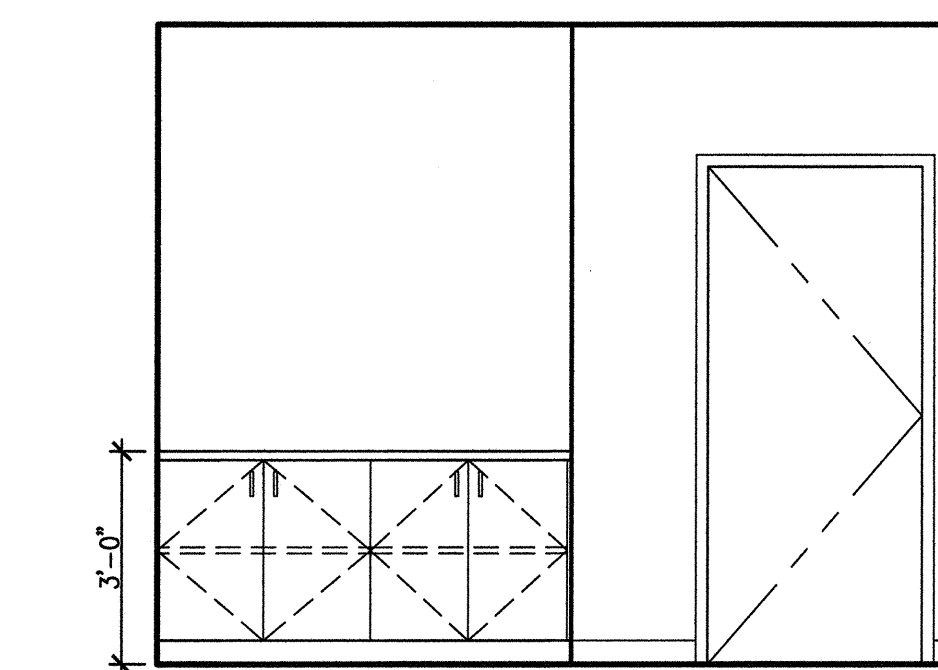
C6 LOCKERS ELEVATION
3/8" = 1'-0"



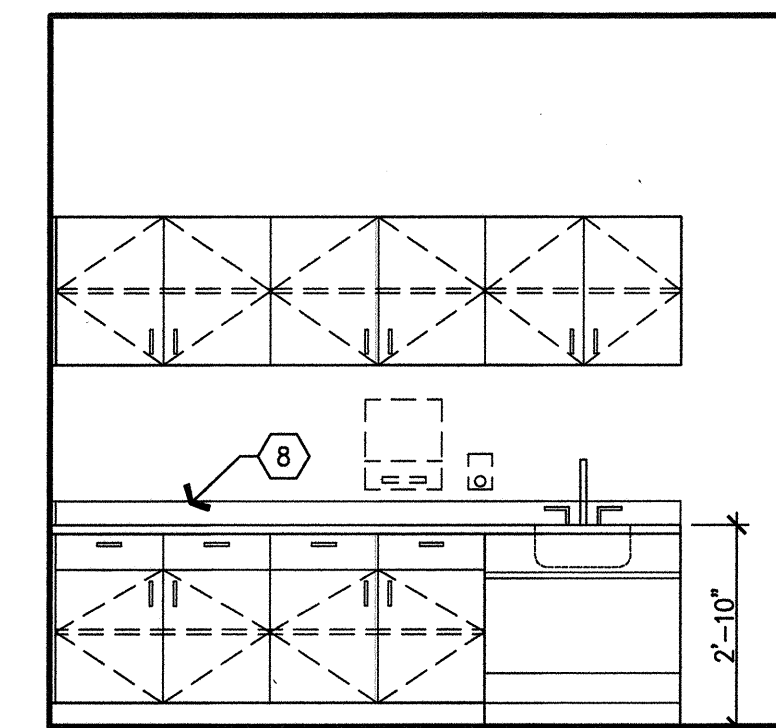
C5 LOCKERS ELEVATION
3/8" = 1'-0"



C4 LOCKERS ELEVATION
3/8" = 1'-0"



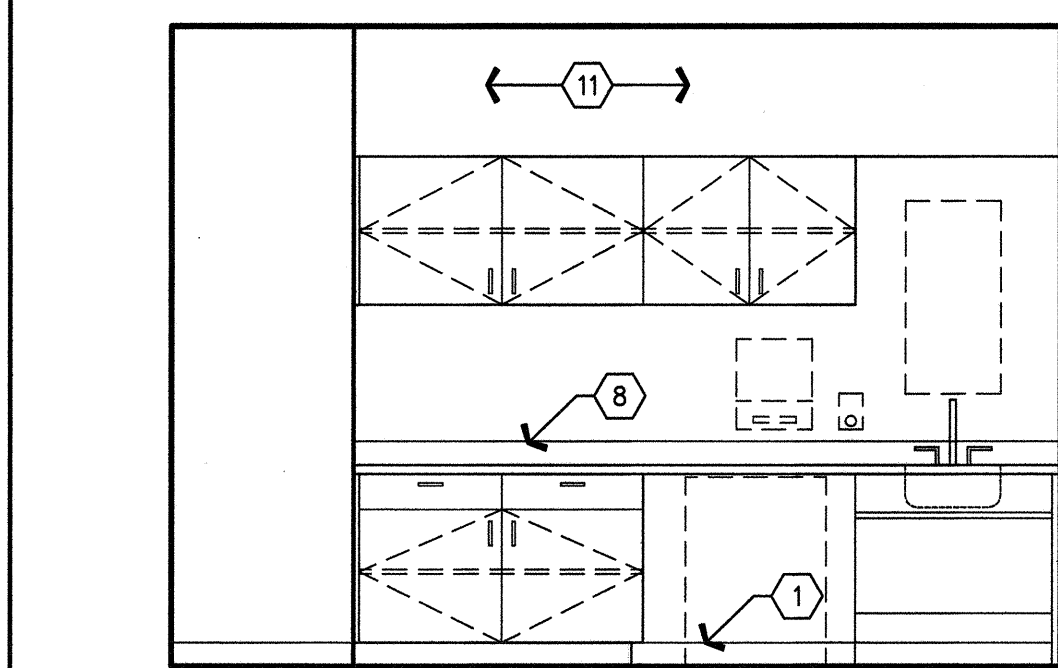
C3 CONFERENCE ROOM (3.102.16)
3/8" = 1'-0"



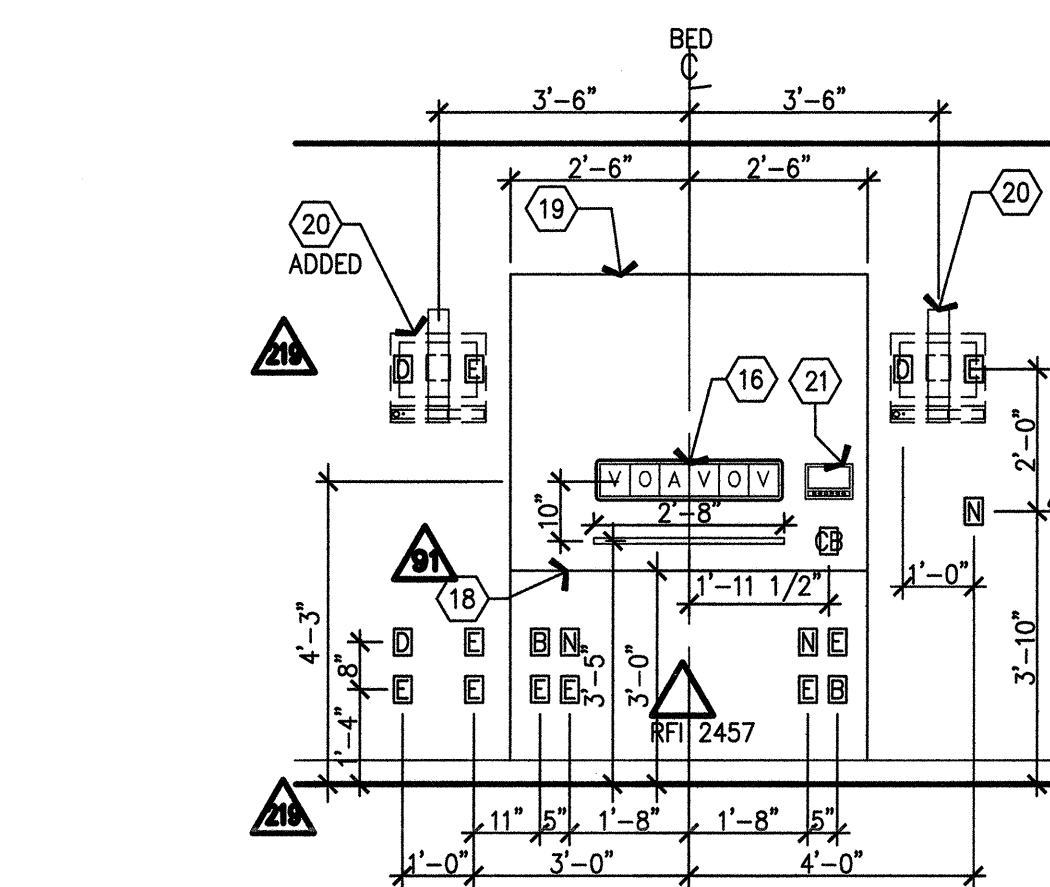
C2 FAMILY ROOM (3.100.07)
3/8" = 1'-0"

C1 GENERAL NOTES

- Scheduled base.
- Closure panel, sloped with plastic laminate finish.
- Shoe space. See detail A6/A10.3.
- Personal effects storage units, type F, typical for all staff lockers. See A4/A11.8.
- This unit provide accessible unit. See A4/A11.8.
- Mirror. Full width of counter, from top of splash to 7'-0" A.F.F. See A3/A11.7.1, for anchorage details.
- Solid surface material counter top.
- Backsplash, to match counter top.
- 18" x 60" Full-length mirror. H.C. compliant. Mount bottom of mirror at 18" A.F.F. See A3/A11.7.1 for similar anchorage detail.
- Bench. H.C. compliant. See B2/A11.7
- Closure panel & soffit.
- Exhaust grille, wall mounted. See Mechanical drawings.
- 2"x4" grout.
- Stainless steel counter top.
- Casework, power coated metal.
- Medical gas outlet. See Plumbing drawings.
- Sink with eye wash. See Plumbing drawings.
- 1/4" x 1/4" reveal, paint block.
- Wall panel, 1/2" fire resistant plywood, plastic laminate finish. Finish all exposed faces and edges.
- Physiological monitor bracket, wall mounted, provide bracing. See Equipment drawings.
- Nurse call, see Telecom drawings, Volume 6B.
- Grommet, see General notes on Sheet A9.0.
- Sharps container, see Equipment drawings.
- Glove dispenser, see Equipment drawings.
- Reception Desk. See Tenant Improvement (Interior Finish), Increment #7, Volume 20.
- ERS Rails.
- Wall mounted equipment for backing detail see A6/A11.3.1.



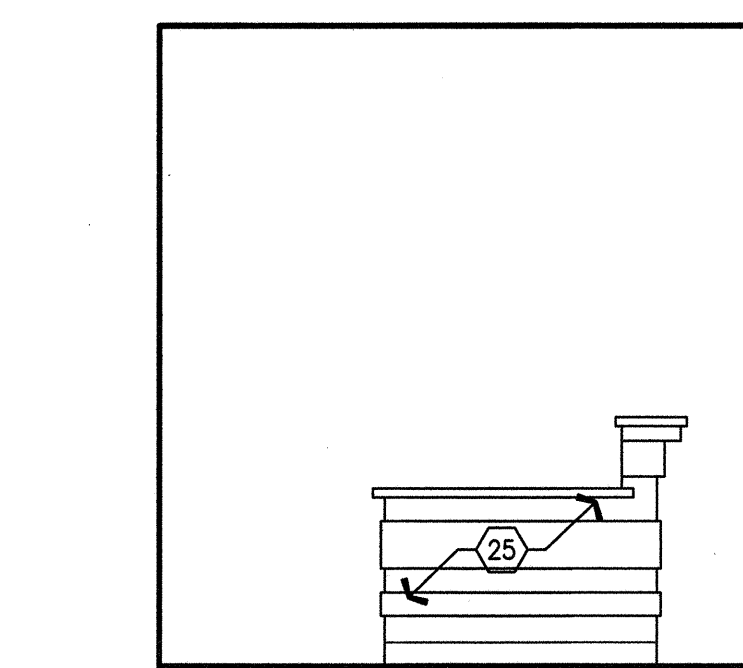
B6 NOURISHMENT (3.046.09) WEST WALL
3/8" = 1'-0"



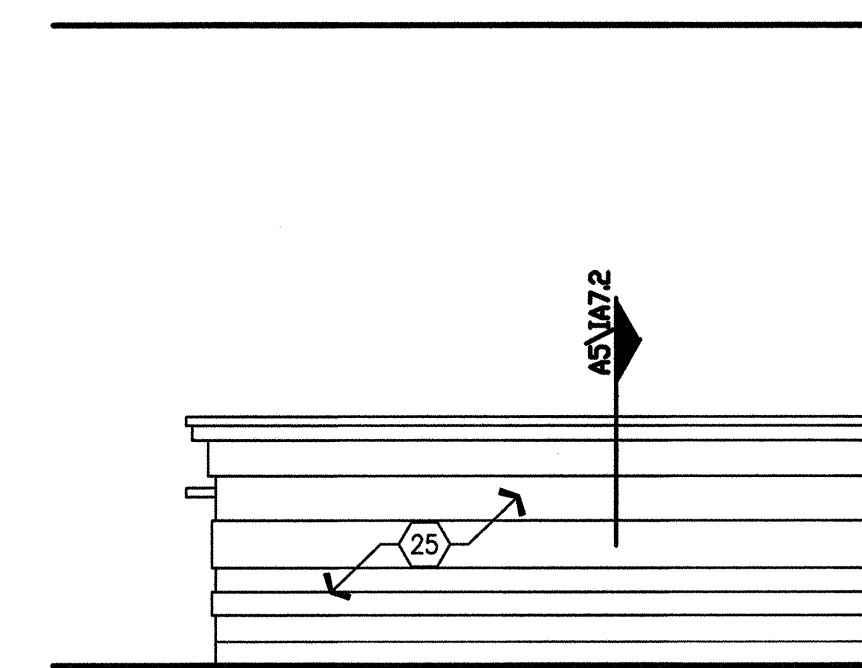
B5 PACU (3.046.00.D) HEADWALL
3/8" = 1'-0"

RFI 2505
Headwall
configuration

(3.046.00.A) SIM. RFI 2485
(3.046.00.C) SIM. Charting station
(3.046.00.D) SIM. equipment type
(3.046.00.F) SIM. and location
(3.046.00.G) SIM.
(3.046.00.H) SIM.
(3.046.00.R) SIM. RFI 2457 ERS
(3.046.00.S) SIM. rail clarification
(3.046.00.P) SIM.
(3.046.00.M) SIM.
(3.046.00.N) SIM.



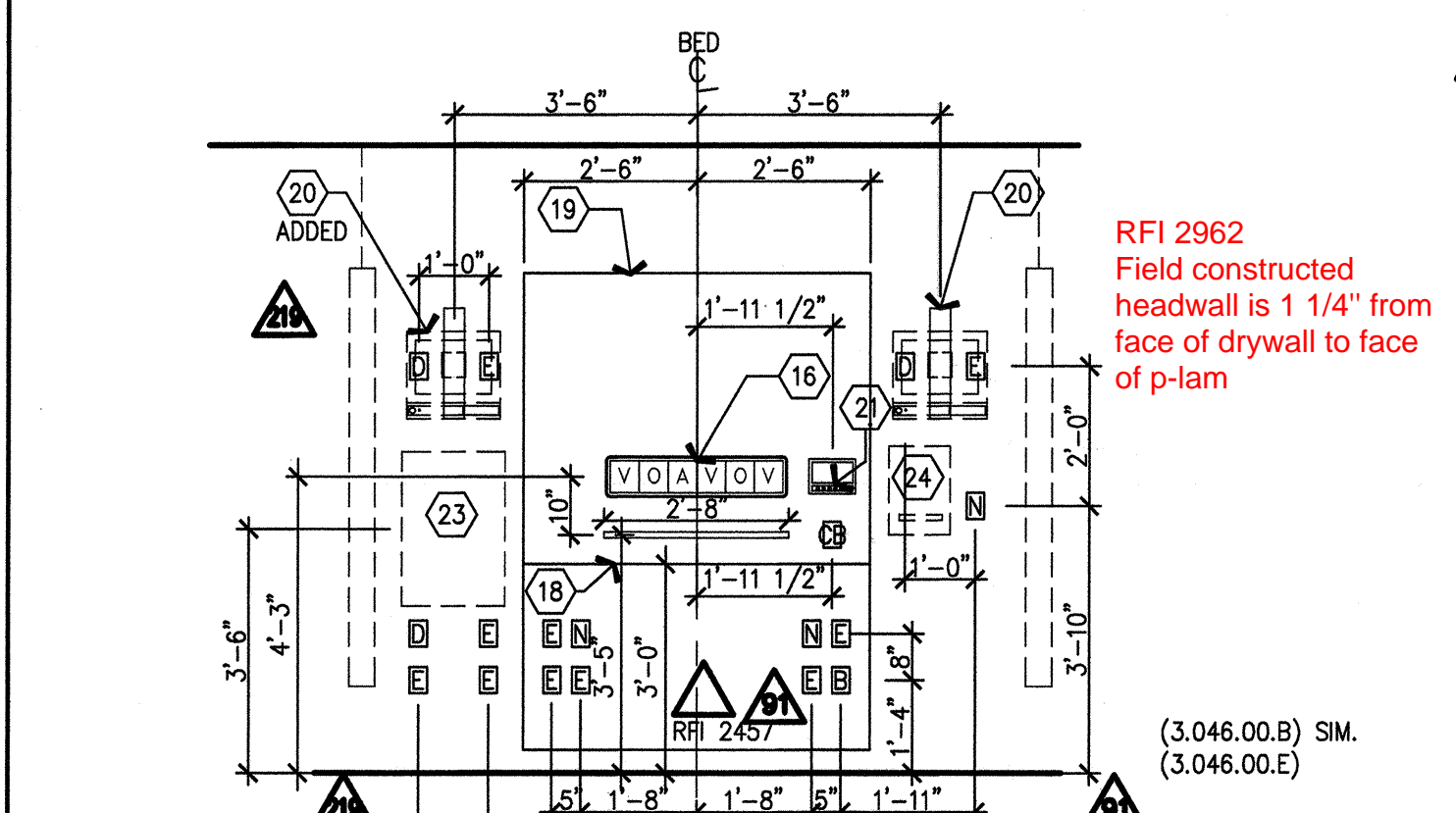
B3 RECEPTION (3.072.00.A)
3/8" = 1'-0"



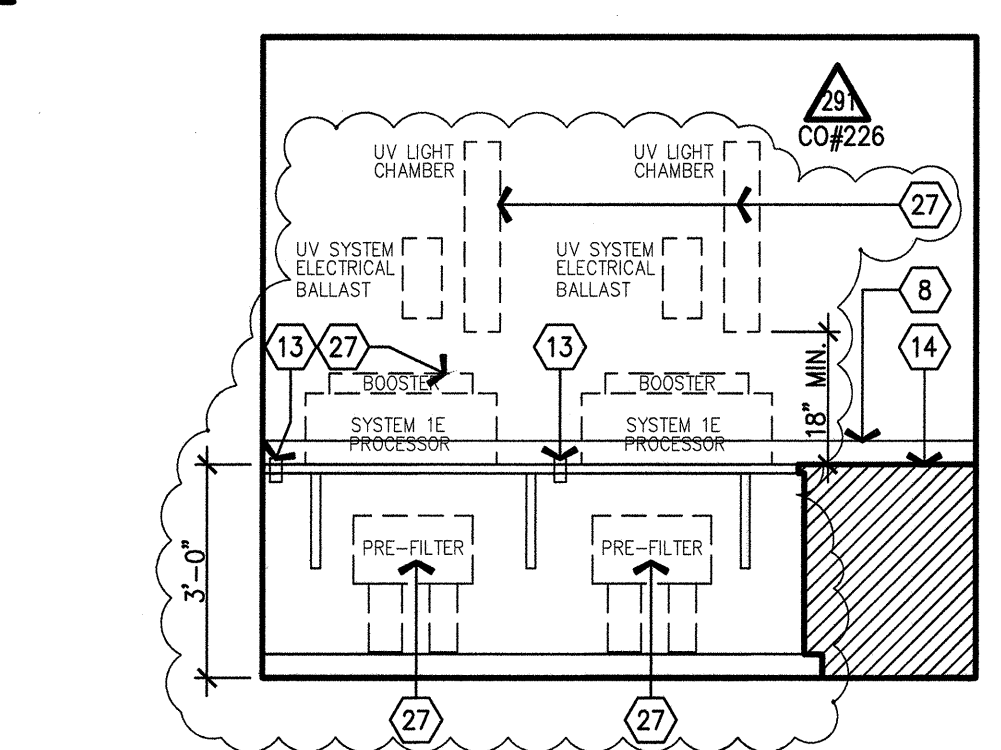
B2 RECEPTION (3.072.00.A)
3/8" = 1'-0"

B1 NOTES TO SHEET

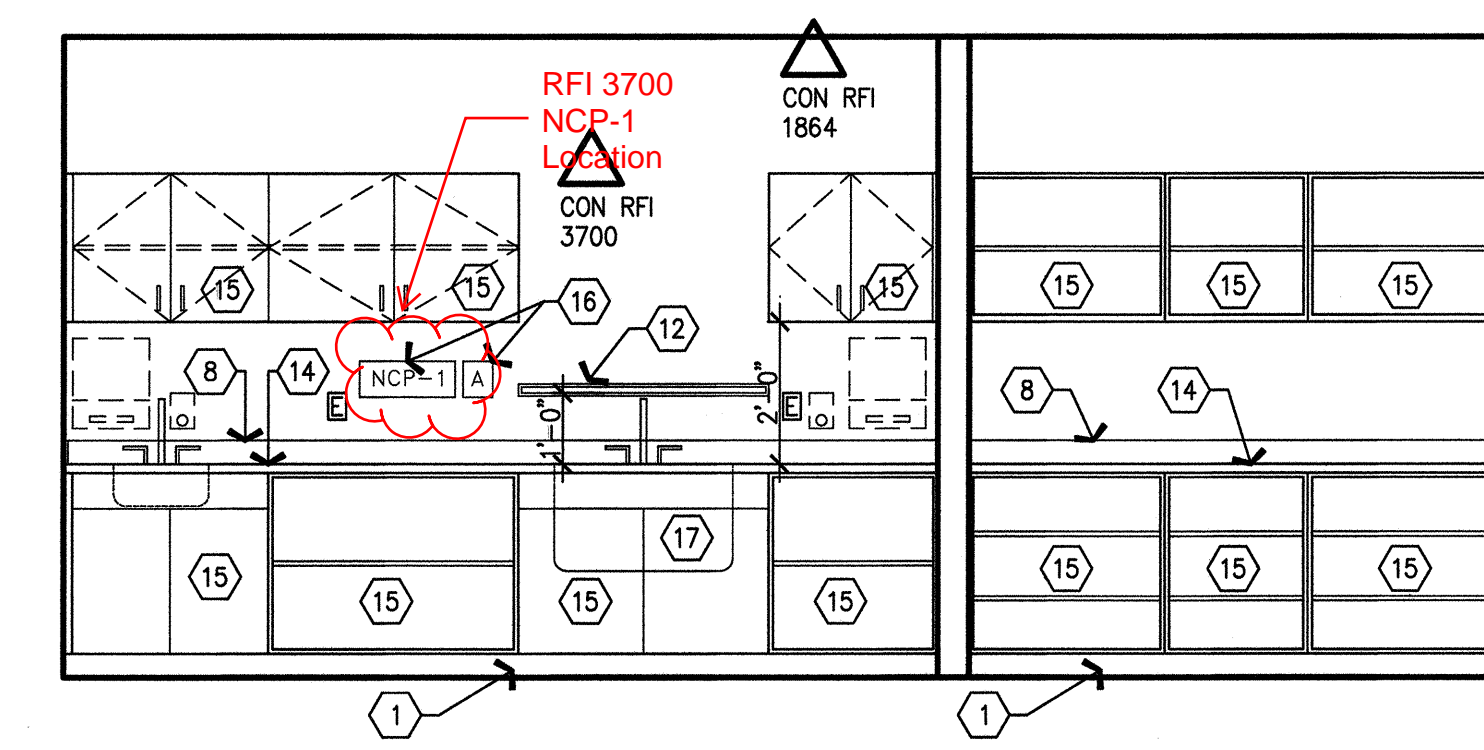
L	LIGHTING	V	VACUUM	TV	TV
D	DATA	S	SLIDE	E	EMERGENCY POWER
N	NORMAL POWER	A	AIR	N	NURSE CALL CONNECTOR
T	THERMOSTAT	ET	TIMER SWITCH	NC	CB
P	PHONE	O	OXYGEN	B	1 1/4" CONDUIT
CB	CODE BLUE				ERS RAILS



A6 PACU (3.046.00E) HEADWALL
3/8" = 1'-0"



A5 DECONTAMINATION ROOM (3.106.15) SOUTH WALL
3/8" = 1'-0"



A3 SUB-STERILE (3.001.32) & CLEAN UTILITY ROOM (3.001.30)
3/8" = 1'-0"

A1 LEGEND