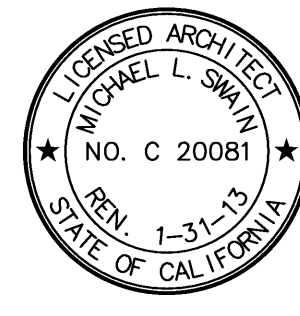


FKP Architects

ARCHITECT OF RECORD
Paul C. Gloriot

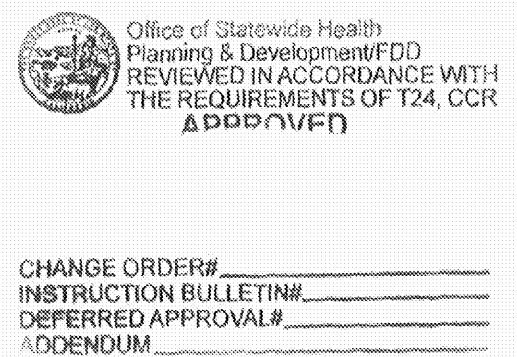


Changes on these drawings do not consist of
materially altered changes to approved drawings
and don't require a change order.
OSHPD review ACO _____
OSHPD review FLSO _____
OSHPD review DSE _____

REVISIONS

103	10/25/10	CHANGE ORDER #87
38	12/23/11	ASI#131

APPROVAL



PROJECT NAME

CHILDREN'S HOSPITAL
OF ORANGE COUNTY

455 S. Main St.
Orange, CA 92668-3874

TOWER II RECEIVED
Jan 23 2012
McCARTHY



PROJECT NUMBER

12011.00
Increment #7

OSHPD - PROJECT NUMBER

IL 072072-30

ISSUE

OSHPD PERMIT

DATE

01/27/2010

SCALE

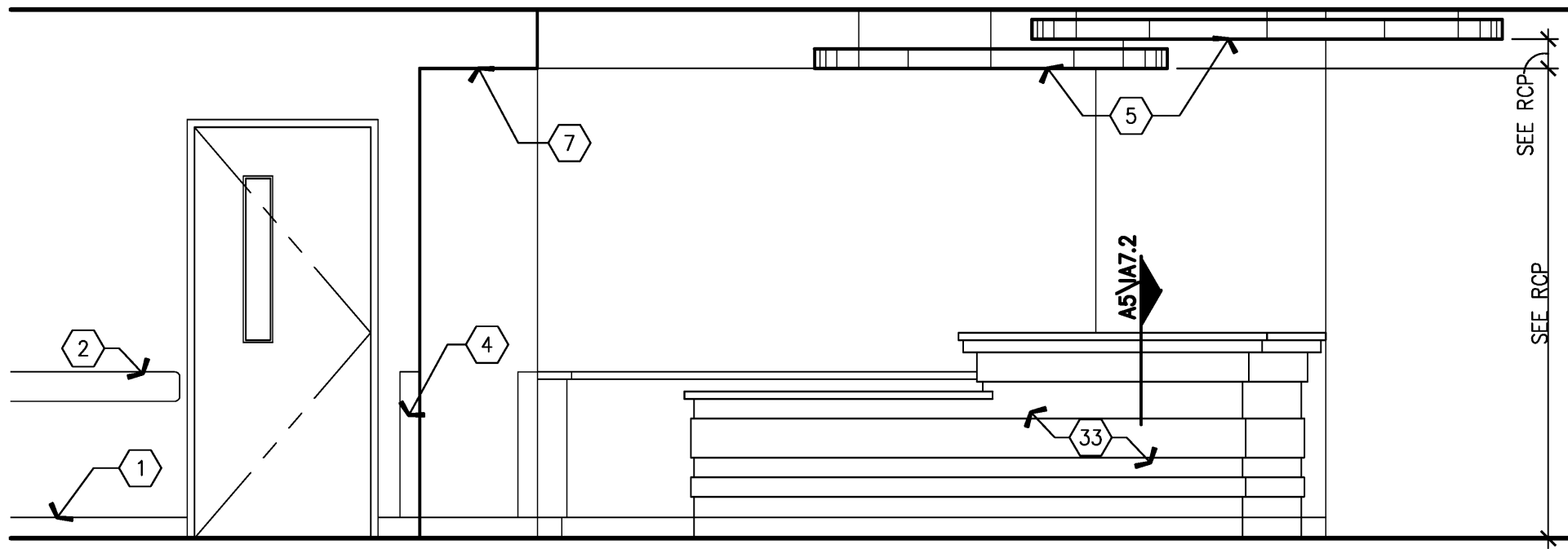
3/8" = 1'-0"

DRAWING TITLE

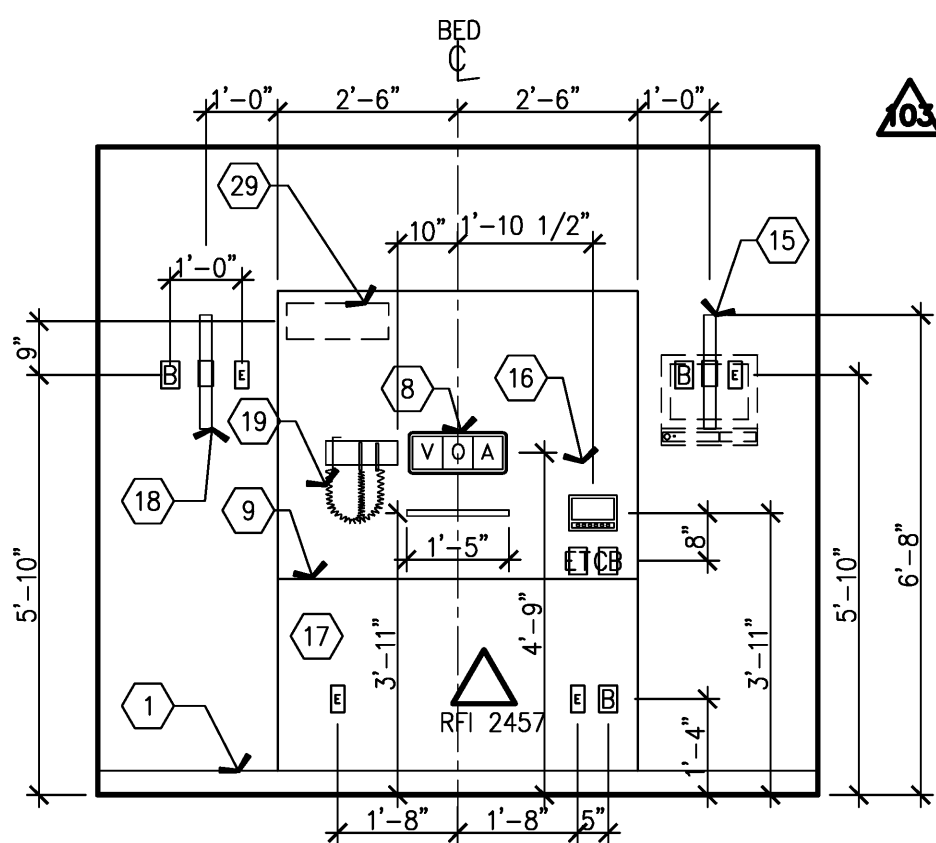
FIFTH FLOOR INTERIOR
ELEVATIONS

DRAWING NUMBER

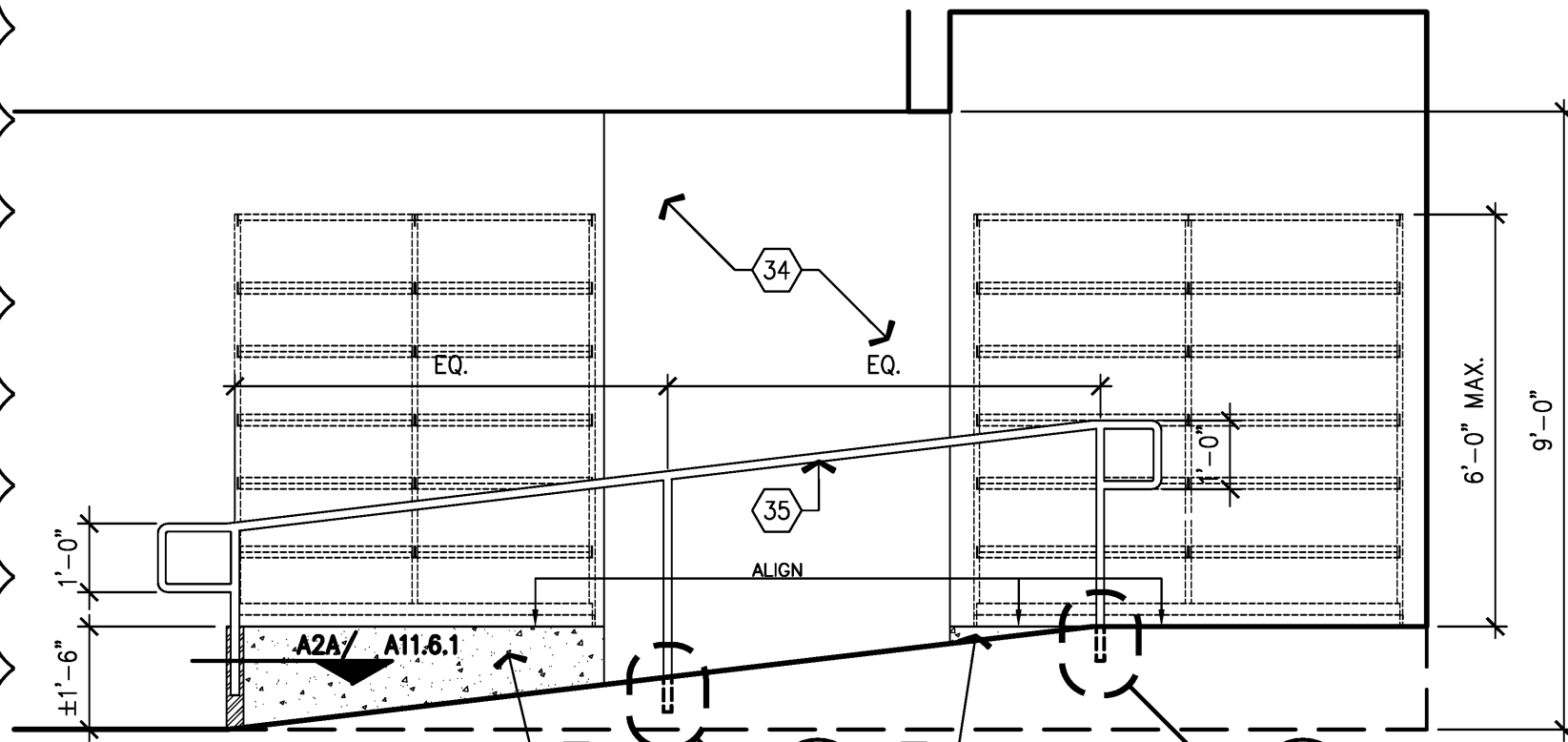
A9.5B



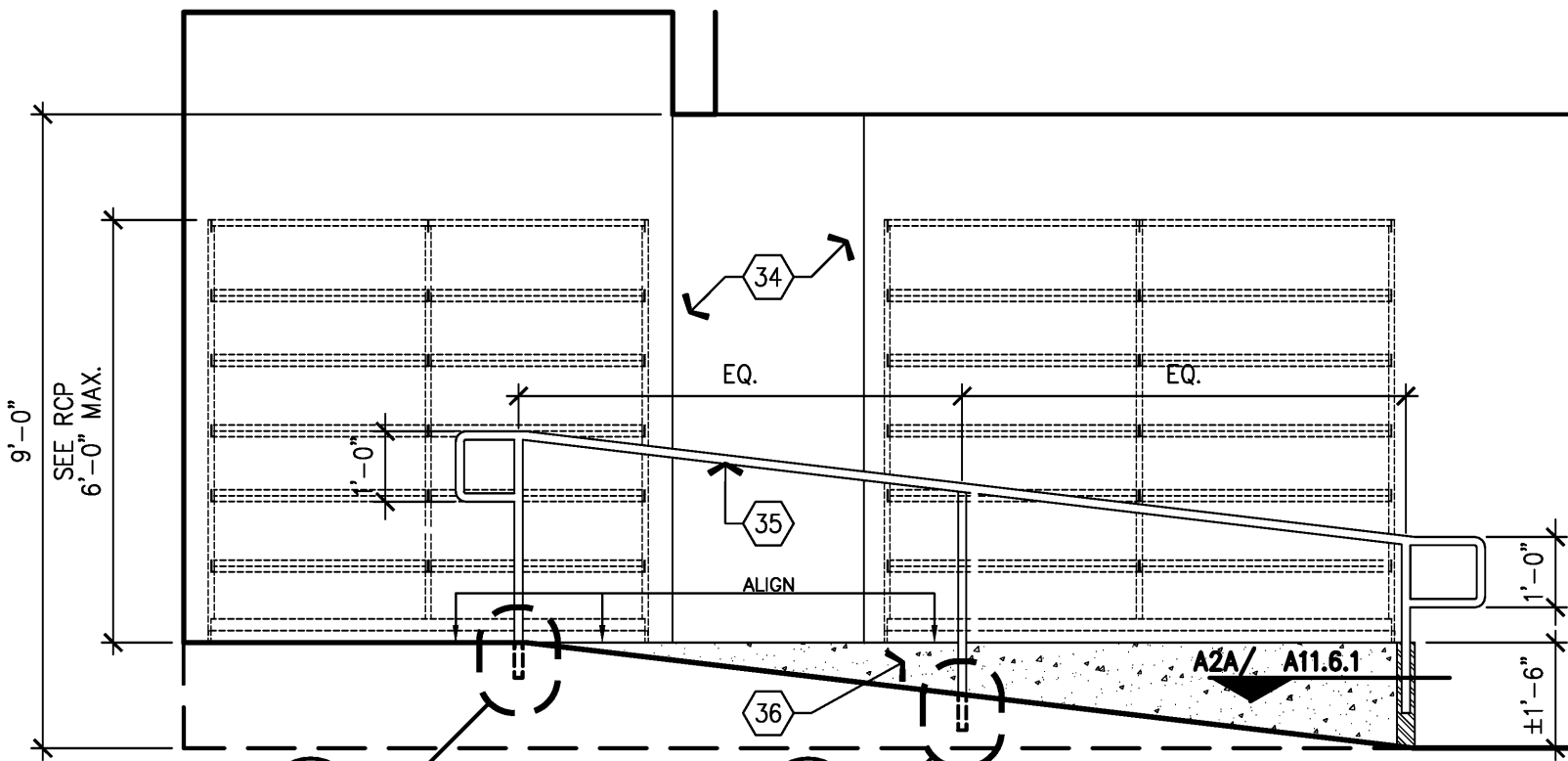
E6 NURSE STATION (5.091.00.A) EASE SIDE
3/8" = 1'-0"



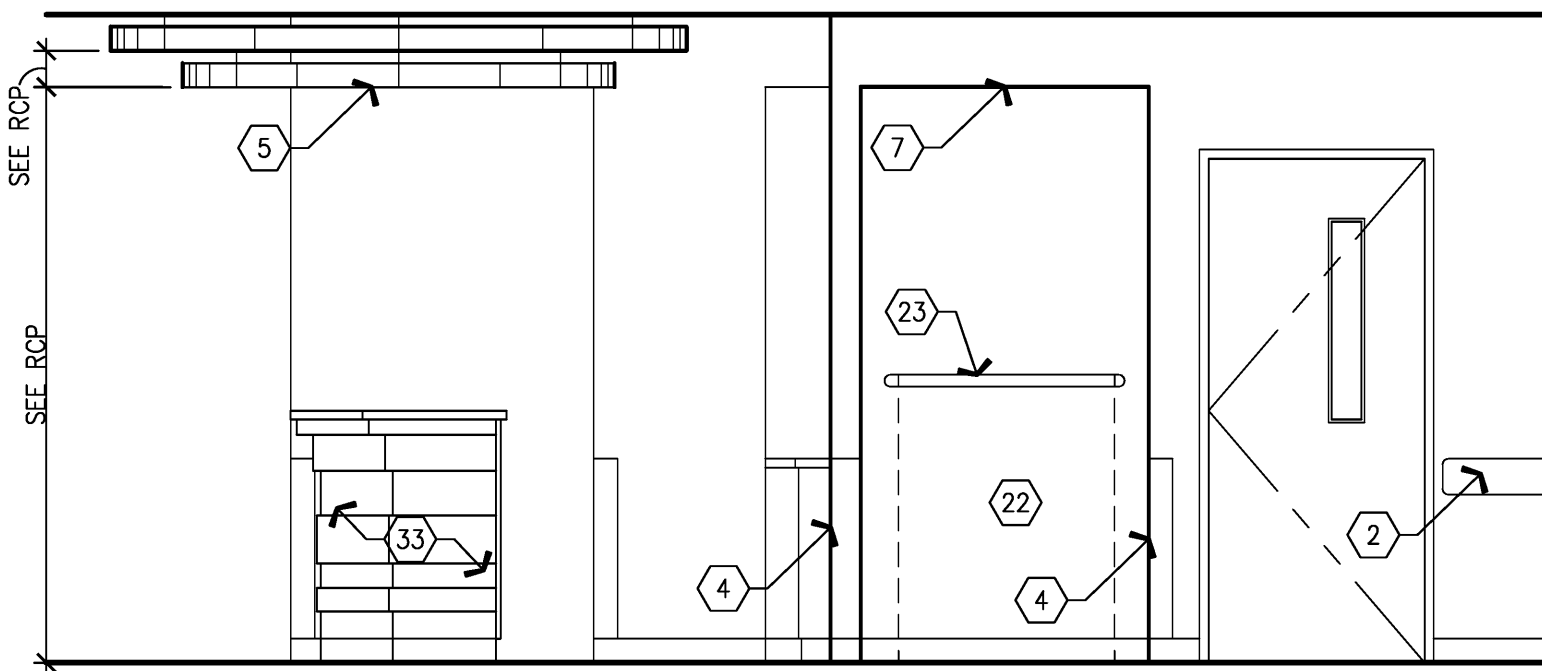
E5 EXAM ROOM (5.101.01)
3/8" = 1'-0"



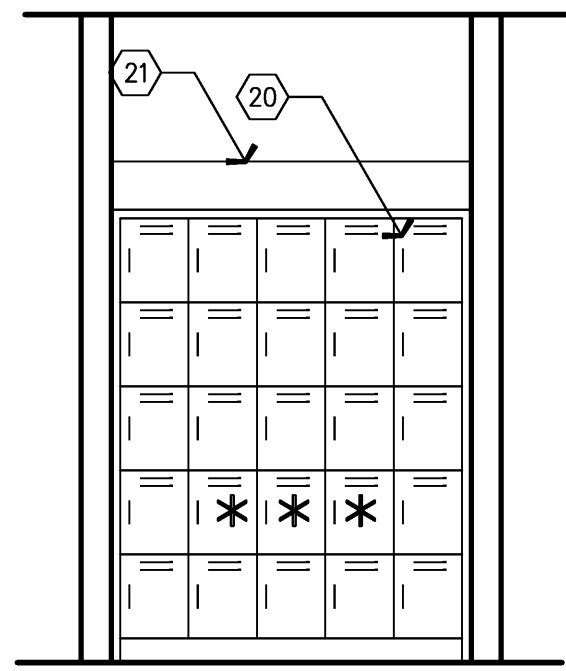
E3 STORAGE 5.081
3/8" = 1'-0"



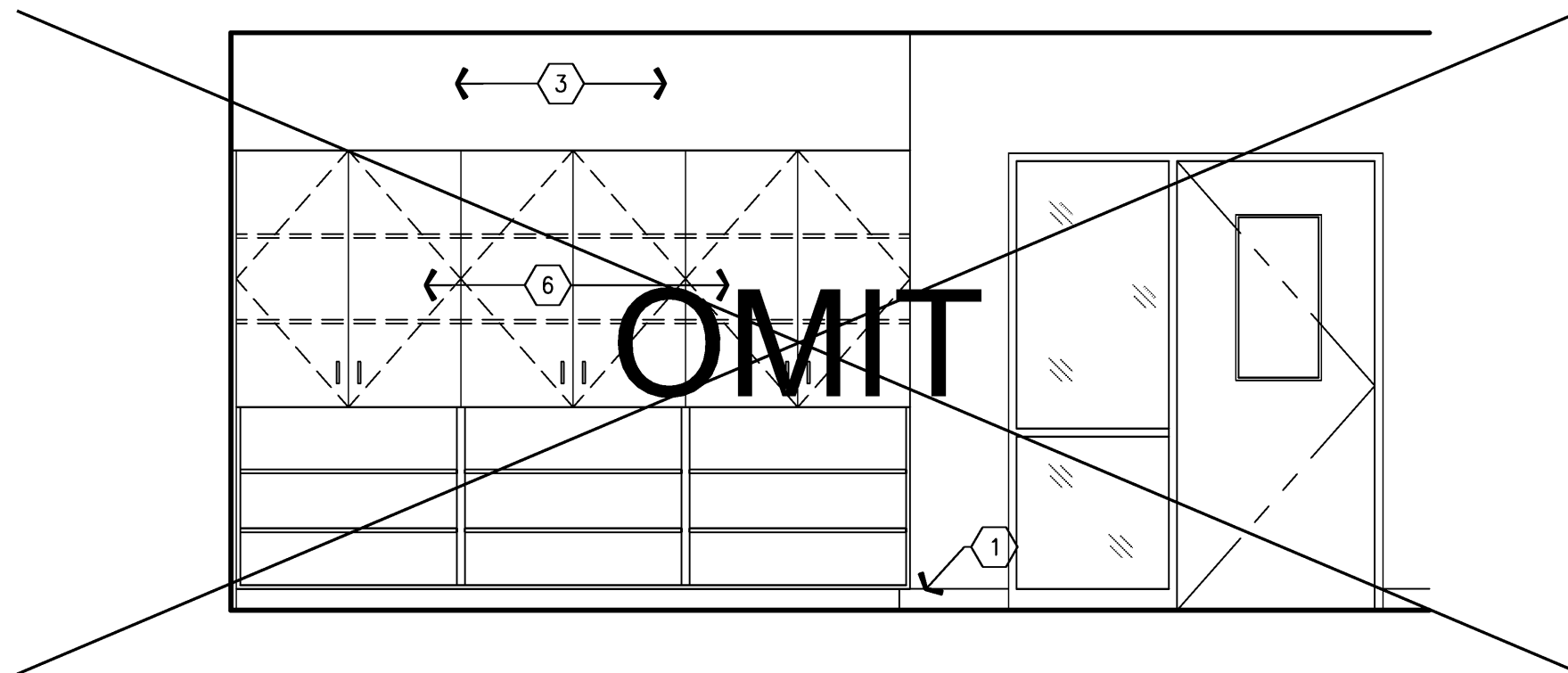
E2 STORAGE 5.081
3/8" = 1'-0"



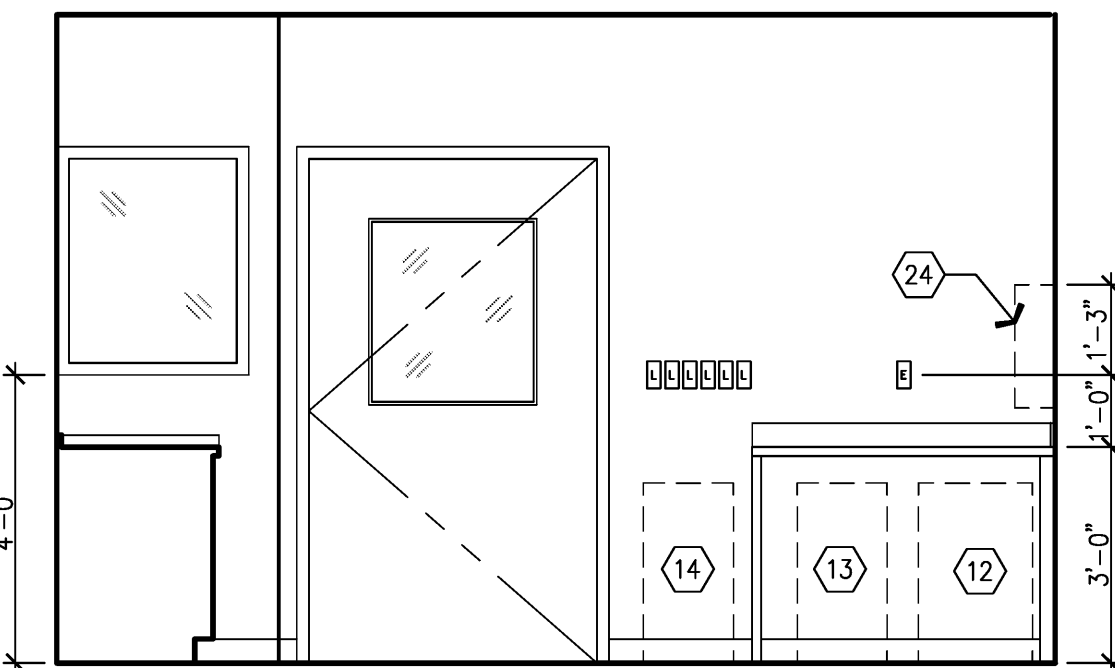
D6 NURSE STATION (5.091.00.A) NORTH SIDE
3/8" = 1'-0"



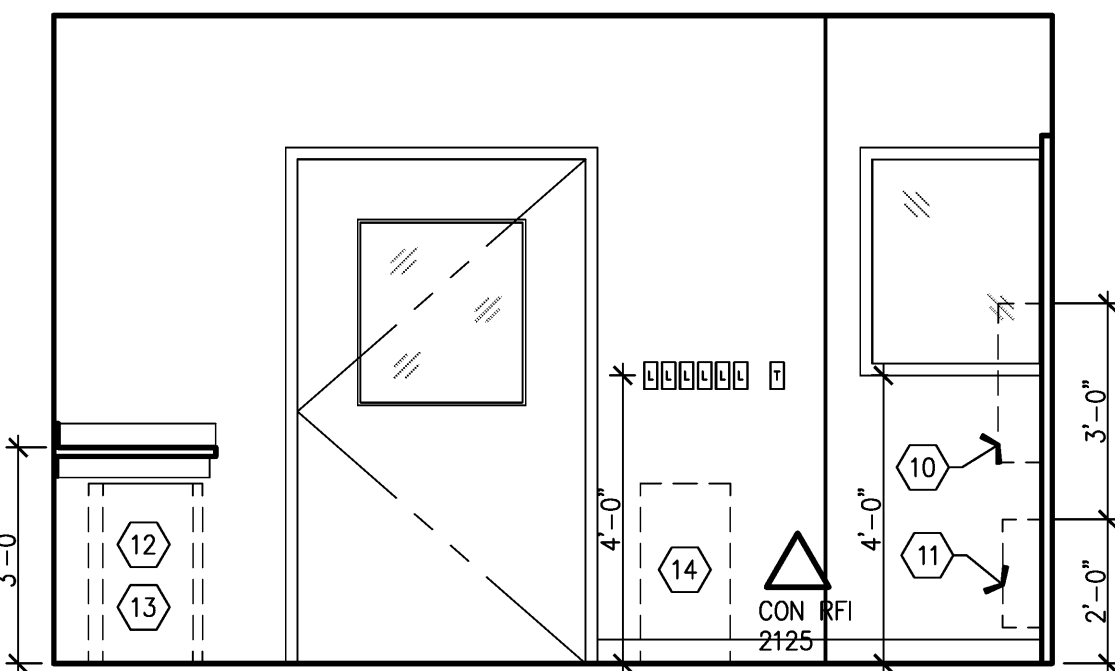
D5 STORAGE UNITS (5.08)
3/8" = 1'-0"



C6 FAMILY LOUNGE (5.082) SOUTH WALL
3/8" = 1'-0"



B6 TYPICAL PATIENT ROOM (5.122)
3/8" = 1'-0"



A6 TYPICAL PATIENT ROOM (5.124)
3/8" = 1'-0"

RFI 1824
Head wall to be PL-1

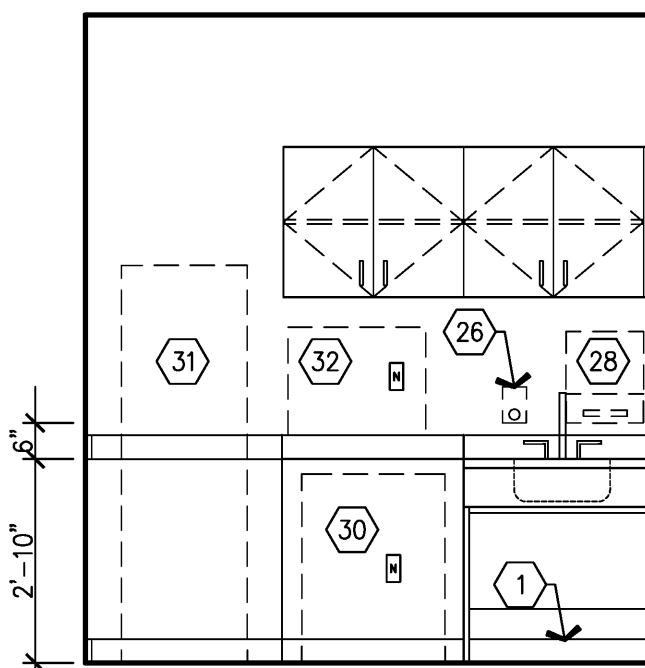
RFI 2505
Headwall configuration

RFI 2962
Field headwall 1 1/4" from face
of drywall to face of p-lam

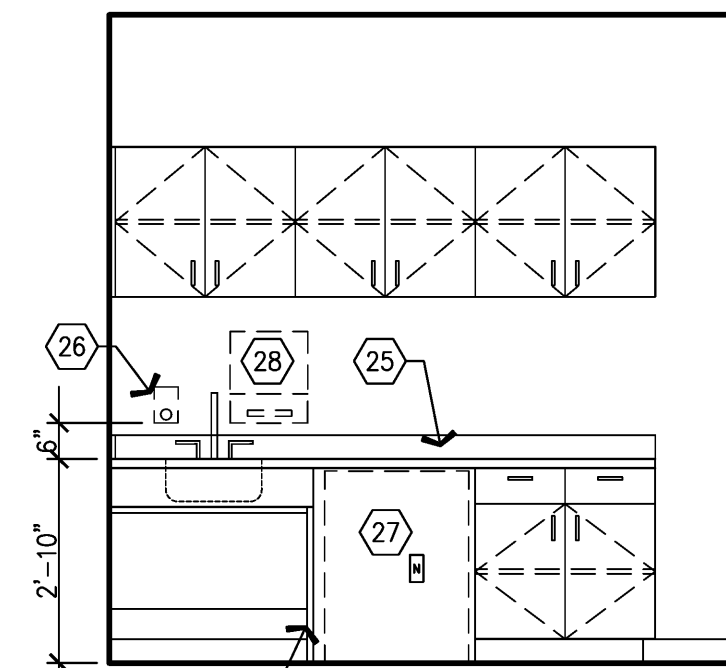
(25 TOTAL STORAGE UNITS, 3 ACCESSIBLE)

- A. Finish and Equipment references can be located in the following documents:
1. Equipment drawings and workbook documents - Inc. #7, Vol. 2E.
2. Tenant Improvement (Interior finish) Inc. #7, Vol. 2D.

C1 GENERAL NOTES



B3 ALCOVE (5.116.00.A)
3/8" = 1'-0"



B2 FAMILY LOUNGE (5.082)
3/8" = 1'-0"

L	LIGHTING	V	VACUUM
D	DATA	S	SLIDE
N	NORMAL POWER	A	AIR
T	THERMOSTAT	C	TIMER SWITCH
P	PHONE	O	OXYGEN
T	TV	NC CB	NURSE CALL & CODE BLUE
E	EMERGENCY POWER		

A2 LEGEND



ASI# 131

A1 NOTES TO SHEET

- Scheduled base.
- Handrail/crashrail. See B4/A11.8 for detail.
- Not used.
- Corner guard. See B4/A11.8 for detail.
- Accent clouds ceiling panel, suspended. See A3, A4, A5 & A6/A10.1.
- Not used.
- Gypsum board, furr down.
- Medical gases, see Plumbing.
- 1" reveal.
- Sharps container, see Equipment drawings and workbook.
- Pharm waste container, see Equipment drawings and workbook.
- Receptacle, see Equipment drawings and workbook.
- Hamper, see Equipment drawings and workbook.
- Bio-hazard waste receptacle, see Equipment drawings and workbook.
- Physiological monitor bracket, wall mounted. Provide bracing, see Equipment drawings.
- Nurse call.
- Wall panel, 1/2" fire-resistant plywood, plastic laminate finish. Finish all exposed faces and edges.
- TV monitor bracket, provide bracing.
- Diagnostic set, wall mounted. See Equipment drawings/workbook.
- Personal effects storage units. Type D.
- Closure panel, sloped with plastic laminate finish.
- Cart, see Equipment drawings and workbook.
- Sheet wall protection @ 48" A.F.F.
- P2 cabinet, see Equipment drawing and workbook.
- Backsplash.
- Soap dispenser, see Equipment drawings and workbook.
- Dishwasher, see Equipment drawings and workbook.
- Paper towel dispenser, see Equipment drawings and workbook.
- Style F end panel. See E1/A9.0.
- Refrigerator, under counter ADA compliant. See Equipment drawings & workbook.
- Ice maker/ Dispenser. See Equipment drawing & workbook.
- Coffee maker. See Equipment drawings and workbook.
- Nurse Station Desk. See Tenant Improvement (Interior Finish), Increment #7, Volume 2D.
- Scheduled partition.
- Handrail, galvanized steel, 1 1/2" O.D. max, painted.
- Concrete pad.