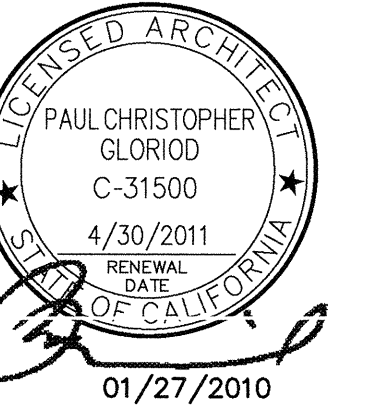


FKP Architects

ARCHITECT OF RECORD
Paul C. Gloriot



REVISIONS

APPROVAL



PROJECT NAME
**CHILDREN'S HOSPITAL
OF ORANGE COUNTY**
455 S. Main St.
Orange, CA 92668-3874

TOWER II



PROJECT NUMBER

**12011.00
Increment #7**

OSHPD - PROJECT NUMBER
IL 072072-30

ISSUE
OSHPD PERMIT

DATE

01/27/2010

SCALE

1/16" = 1'

DRAWING TITLE

**LEVEL 1 LIFE SAFETY
PLAN-A**

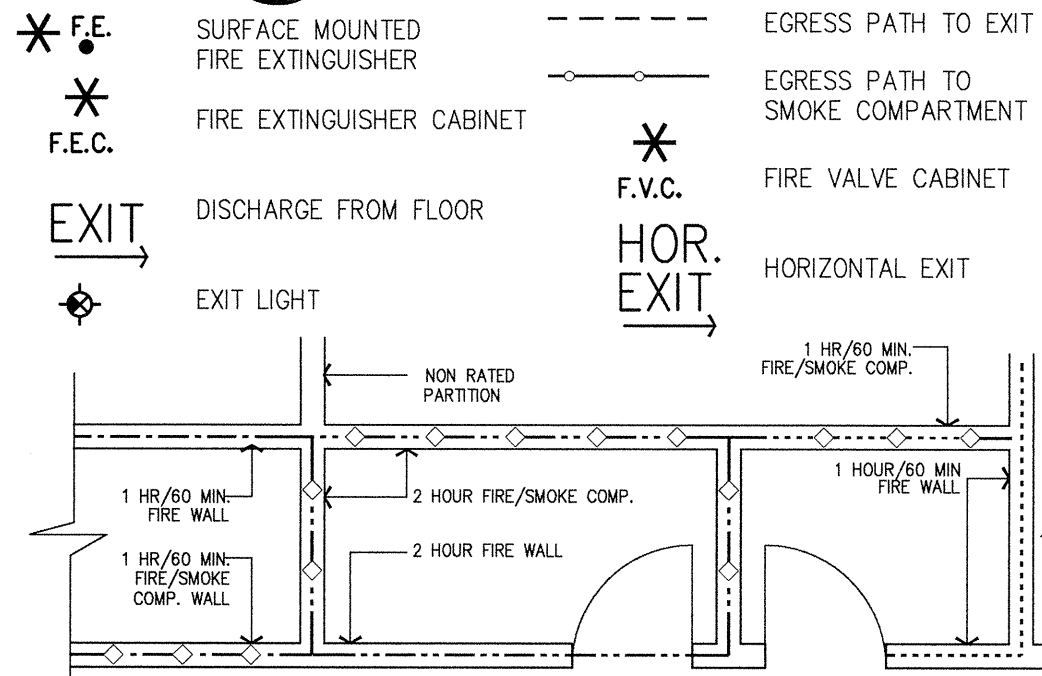
DRAWING NUMBER

AC2.1A

E2 NOTES TO SHEET

- INFORMATION SHOWN OR REFERENCED ON ENLARGED AND/OR 1/4" SCALE DRAWINGS WILL GENERALLY NOT BE SHOWN ON THE SMALLER SCALE DRAWINGS.
- PURPOSE OF THESE DRAWINGS: TO SHOW OVERALL BUILDING PLAN ORIENTATION, SMOKE COMPARTMENTS, SUITED AREAS, FIRE EXTINGUISHER CABINET LOCATIONS, PROPOSED GENERAL EXIT SIGNS FOR EGRESS ROUTING, EGRESS DISTANCES, WALKWAY CASE TO STAIRS OR HORIZONTAL EXIT, FIRE WALLS, OCCUPANT LOADING, EXIT CALCULATIONS AND AREAS OF REFUGE CALCULATIONS.
- FIRE/SMOKE GRAPHICS LEGEND IS THE SAME FOR ALL PLAN SHEETS IN THE SET. TYPICAL CORRIDOR WALL RATING INDICATES MINIMUM ONE HOUR CORRIDOR WALLS, UNLESS OTHERWISE NOTED TO BE HIGHER RATED RESTRICTIONS. ALL DOORS IN TYPICAL CORRIDORS ARE NOT RATED; ALL WINDOWS IN TYPICAL CORRIDORS ARE NOT RATED, BUT LIMITED TO 25% OF THE INTERIOR SPACE FACING THE CORRIDOR WALL.
- SHELLED SPACE IS NOT FOR HOSPITAL USE UNTIL PROPOSED LAYOUT IS REVIEWED AND APPROVED BY OSHPD.
- IT IS THE INTENT THAT MATERIALS LISTED IN FIRE RATED DESIGNS IN THE DRAWINGS MATCH THOSE PRODUCTS INCLUDED IN THE PROJECT MANUAL (SPECIFICATIONS). SUBMITTAL OF MANUFACTURER'S PRODUCTS LISTED IN THE FIRE RESISTANT RATING TEST, BUT NOT SPECIFIED IN THE PROJECT MANUAL, WILL BE SUBJECT TO REJECTION. THIS INCLUDES BUT IS NOT LIMITED TO ALTERNATE MANUFACTURERS LISTED IN U.L. BUILDING MATERIALS DIRECTORY OR SIMILAR LITERATURE.
- IN THE EVENT OF A CONFLICT IN EITHER PUBLISHED TEST DATA INCLUDED IN THE DOCUMENTS AND/OR THE PROJECT MANUAL (SPECIFICATIONS), PLEASE NOTIFY THE ARCHITECT PRIOR TO PREPARATION OF SUBMITTAL DOCUMENTS AND/OR PURCHASE OF MATERIALS OR FABRICATION. UNDER NO CIRCUMSTANCE WILL BUILDING PRODUCTS REQUIRED BY FIRE-RATED ASSEMBLIES BE ACCEPTED WITHOUT INDEPENDENT TEST RESULTS FROM NATIONALLY RECOGNIZED TESTING LABORATORIES OR MODEL BUILDING CODE ORGANIZATIONS, AS APPROVED BY OSHPD.
- SEE PARTITION TYPES AND REFERENCE DETAILS FOR SOUND TRANSMISSION CLASS AND/OR FIRE RESISTANCE REQUIREMENTS.

C2 GENERAL NOTES



EXAMPLE - FIRE/SMOKE RATING

- TYPICAL CORRIDOR WALL (1 HOUR WALL/DOORS SMOKE-RATED/NON-RATED WINDOWS LIMITED IN SIZE (25% OF WALL)) CBC 407.3.
- ONE HOUR FIRE RATED WALL (OCCUPANCY SEPARATION) WITH 60 MIN. DOORS. CBC 508.
- ONE HOUR FIRE/SMOKE RATED WALL (OCCUPANCY SEPARATION) WITH 60 MIN. DOORS. CBC 709.
- TWO HOUR FIRE RATED WALL (SHAFT ENCLOSURE, OCCUPANCY SEPARATION & HORIZONTAL EXIT) WITH 90 MIN. DOORS. CBC 508, 707 & 1022.
- TWO HOUR FIRE/SMOKE RATED WALL (SHAFT ENCLOSURE/SMOKE COMPARTMENT) WITH 90 MIN. DOORS. CBC 404.4 & 707.
- 3 HOUR RATED WALL (OCCUPANCY SEPARATION) 180 MIN. DOORS. CBC 715.
- 3 HOUR FIRE/SMOKE RATED WALL (OCCUPANCY SEPARATION/SMOKE COMPARTMENT) 180 MIN. DOORS. CBC 404.4 & 715.
- 4 HOUR RATED WALL (OCCUPANCY SEPARATION) 180 MIN. DOORS. CBC 715.
- SMOKE COMPARTMENT WALLS-ONE HOUR RATE WITH 60 MIN. DOORS. CBC 407.4, 709 & 715.
- DISCHARGE PATH TO PUBLIC WAY

Suites Shell Space

Finish Floor Elevation=143.30'

Area of refuge. (Rescue Assistance)
Code Requirement: 200 Occupants per one area of refuge. Level 1 773.6/200 = 3.9 min.

LEVEL 1 SMOKE COMPARTMENT AND EXITING CALCULATIONS:													
COMPARTMENTS & OCCUPANCY:	AREA (SF)	OCCUPANT TYPE	LOAD FACTOR SP/PERSON	OCCUPANTS	REQUIRED EXIT (IN)	WIDTH REQ. (IN)	WIDTH PROVIDED (IN)	EXITS					
A 1-2 OCC.	4,265	INPATIENT	240	17.8	HOR.=2	26.9	67	EXIT #2					
	1,183	WAITING	15	78.9									
	SUITE 1	7,538	INPATIENT	240						31.4			
		98	WAITING	15	6.5								
TOTAL		13,084		134.6									
B 3 OCC.	11,984	BUSINESS	100	119.8	HOR.=2	90.4	104	EXIT #1 (60)					
	1,545	WAITING	15	103.0									
	2,764	LOBBY	15	184.3									
		100	CONF.	15	6.7								
SUITE 2	2,826	BUSINESS	100	28.3	HOR.=2	90.4	104	EXIT #1 (60)	* HOR. EXIT				
SUITE 6	975	BUSINESS	100	9.8									
TOTAL		20,194		451.9									
C 1-2 OCC.	15,357	INPATIENT	240	64.0	HOR.=2	12.8	80	EXIT #3					
		WAITING	15	29.9									
		CONF.	15	18.1									
	TOTAL		15,357		64.0								
D 1-2 OCC.	7,179	INPATIENT	240	29.9	HOR.=2	24.6	46	EXIT #4					
	492	CONF.	15	30.8									
	271	WAIT	15	18.1									
SUITE 3	1,358	INPATIENT	240	5.7	HOR.=2	90.4	104	EXIT #1 (60)	EXIT #2 (44)				
SUITE 4	620	BUSINESS	240	2.6									
	8,644	INPATIENT	240	36.0									
TOTAL		18,534		123.1									
TOTAL		67,169		773.6	HOR.=2	154.7	297						

LEVEL 1 SMOKE COMPARTMENT REFUGE AREA CALCULATIONS:										
COMPARTMENTS & OCCUPANCY:		AREA (SF)	ADJOINING SMOKE COMP.(S)	OCCUPANT LOAD	REQ. SF PER OCCUP.	REQ. AGGREGATE AREA (SF)	AGGREGATE AREA PROVIDED (SF)			
A 1/2 OCC.	13,084	B	451.9	6	2,711	CORRIDORS	4,382			
			64	6	384					
					3,095					
B 3 OCC.	20,194	A	135	6	810	CORRIDORS	4,584			
			D	123	6					738
			C	64	6					384
			TOTAL							7,348
C 1/2 OCC.	15,357	A	135	6	810	CORRIDORS	4,090			
			D	123	6					738
			B	451.9	6					2,711
			TOTAL							7,693
D 1/2 OCC.	18,534	B	451.9	6	2,711	CORRIDORS	3,736			
			C	64	6					384
					3,095					

A4 LEVEL 1 LIFE SAFETY PLAN

A2 LEGEND

