

FKP Architects

ARCHITECT OF RECORD  
Paul C. Glorido

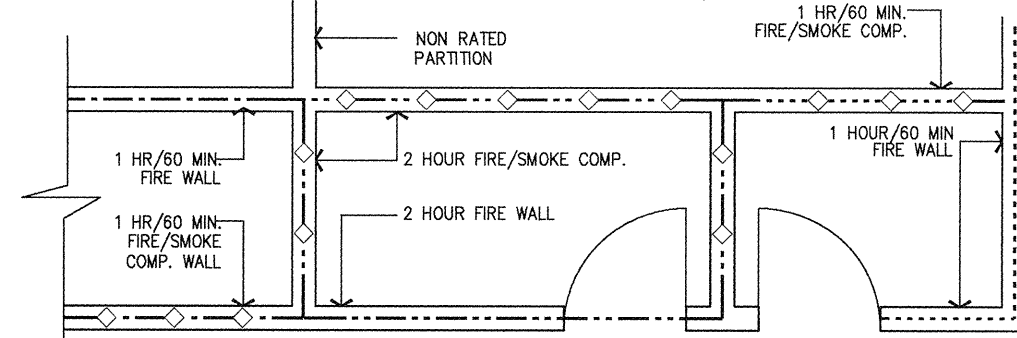


REVISIONS

- A. INFORMATION SHOWN OR REFERENCED ON ENLARGED AND/OR 1/4" SCALE DRAWINGS WILL GENERALLY NOT BE SHOWN ON THE SMALLER SCALE DRAWINGS.
- B. PURPOSE OF THESE DRAWINGS: TO SHOW OVERALL BUILDING PLAN ORIENTATION, SMOKE COMPARTMENTS, SUITED AREAS, FIRE EXTINGUISHER CABINET LOCATIONS, PROPOSED GENERAL EXIT SIGNS FOR EGRESS ROUTING, EGRESS DISTANCES, WALKWAYS TO STAIRS OR HORIZONTAL EXIT, FIRE WALLS, OCCUPANT LOADING EXIT CALCULATIONS AND AREAS OF REFUGE CALCULATIONS.
- C. FIRE/SMOKE GRAPHICS LEGEND IS THE SAME FOR ALL PLAN SHEETS IN THE SET. TYPICAL CORRIDOR WALL RATING INDICATES MINIMUM ONE HOUR CORRIDOR WALLS, UNLESS OTHER NOTED TO BE HIGHER RATED RESTRICTIONS. ALL DOORS IN TYPICAL CORRIDORS ARE NOT RATED; ALL WINDOWS IN TYPICAL CORRIDORS ARE NOT RATED, BUT LIMITED TO 25% OF THE INTERIOR SPACE FACING THE CORRIDOR WALL.
- D. SHELLED SPACE IS NOT FOR HOSPITAL USE UNTIL PROPOSED LAYOUT IS REVIEWED AND APPROVED BY OSHPD.
- E. IT IS THE INTENT THAT MATERIALS LISTED IN FIRE RATED DESIGNS IN THE DRAWINGS MATCH THOSE PRODUCTS INCLUDED IN THE PROJECT MANUAL (SPECIFICATIONS). SUBMITTAL OF MANUFACTURER'S PRODUCTS LISTED IN THE FIRE RESISTANT RATING TEST, BUT NOT SPECIFIED IN THE PROJECT MANUAL, WILL BE SUBJECT TO REJECTION. THIS INCLUDES BUT IS NOT LIMITED TO ALTERNATE MANUFACTURERS LISTED IN U.L. BUILDING MATERIALS DIRECTORY OR SIMILAR LITERATURE.
- F. IN THE EVENT OF A CONFLICT IN EITHER PUBLISHED TEST DATA INCLUDED IN THE DOCUMENTS AND/OR THE PROJECT MANUAL (SPECIFICATIONS), PLEASE NOTIFY THE ARCHITECT PRIOR TO PREPARATION OF SUBMITTAL DOCUMENTS AND/OR PURCHASE OF MATERIALS OR FABRICATION.
- G. UNDER NO CIRCUMSTANCE WILL BUILDING PRODUCTS REQUIRED BY FIRE-RATED ASSEMBLIES BE ACCEPTED WITHOUT INDEPENDENT TEST RESULTS FROM NATIONALLY RECOGNIZED TESTING LABORATORIES OR MODEL BUILDING CODE ORGANIZATIONS, AS APPROVED BY OSHPD.
- H. SEE PARTITION TYPES AND REFERENCE DETAILS FOR SOUND TRANSMISSION CLASS AND/OR FIRE RESISTANCE REQUIREMENTS.

## GENERAL NOTES

- FE SURFACE MOUNTED FIRE EXTINGUISHER
- FEC FIRE EXTINGUISHER CABINET
- EXIT DISCHARGE FROM FLOOR
- EXIT LIGHT
- EGRESS PATH TO EXIT
- EGRESS PATH TO SMOKE COMPARTMENT
- F.V.C. FIRE VALVE CABINET
- HOR. EXIT HORIZONTAL EXIT



### EXAMPLE - FIRE/SMOKE RATING

- TYPICAL CORRIDOR WALL [1 HOUR WALL/DOORS SMOKE-RATED/NON-RATED WINDOWS LIMITED IN SIZE(25% OF WALL)] CBC 407.3.
- ONE HOUR FIRE RATED WALL (OCCUPANCY SEPARATION) WITH 60 MIN. DOORS. CBC 508.
- ONE HOUR FIRE/SMOKE RATED WALL (OCCUPANCY SEPARATION) WITH 60 MIN. DOORS. CBC 709.
- TWO HOUR FIRE RATED WALL (SHAFT ENCLOSURE, OCCUPANCY SEPARATION & HORIZONTAL EXIT) WITH 90 MIN. DOORS. CBC 508, 707 & 1022.
- TWO HOUR FIRE/SMOKE RATED WALL (SHAFT ENCLOSURE/SMOKE COMPARTMENT) WITH 90 MIN. DOORS. CBC 404.4 & 707.
- 3 HOUR RATED WALL (OCCUPANCY SEPARATION) 180 MIN. DOORS. CBC 715.
- 3 HOUR FIRE/SMOKE RATED WALL (OCCUPANCY SEPARATION/SMOKE COMPARTMENT) 180 MIN. DOORS. CBC 404.4 & 715.
- 4 HOUR RATED WALL (OCCUPANCY SEPARATION) 180 MIN. DOORS. CBC 715.
- SMOKE COMPARTMENT WALLS-ONE HOUR RATE WITH 60 MIN. DOORS. CBC 407.4, 709 & 715.
- DISCHARGE PATH TO PUBLIC WAY

Suites Shell Space

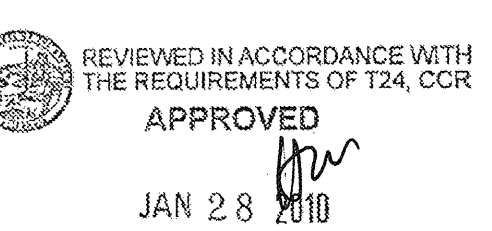
Area of refuge. (Rescue Assistance)  
Code Requirement: 200 Occupants per one area of refuge. Level 1 1,325.4/200 = 6.7 min.

### LEVEL 1 SMOKE COMPARTMENT AND EXITING CALCULATIONS:

COMPARTMENTS & OCCUPANCY	AREA (SF)	OCCUPANT TYPE	LOAD FACTOR (LBS/PSF)	OCCUPANTS	REQUIRED EXIT (IN)	WIDTH REQ (IN)	WIDTH PROVIDED (IN)	EXITS
A 1/2 OCC.	8,189	INPATIENT WAITING	240	34.1	HOR.=2	26.9	67	EXIT #2
SUITE 1	9,063	INPATIENT WAITING	240	37.2	98	6.5		
TOTAL	17,350			134.6				
B 9 OCC.	14,848	BUSINESS	100	148.5	HOR.=2	57.9	60	EXIT #1
SUITE 2	1,545	CONF.	15	103.0				
SUITE 6	2,836	BUSINESS	120	28.3				
SUITE 5	975	BUSINESS	100	9.8				
TOTAL	20,194			289.5				
D 1/2 OCC.	11,015	INPATIENT CONF.	240	45.9	HOR.=2	26.7	80	EXIT #4
SUITE 3	648	CONF.	15	43.2				
SUITE 4	1,358	INPATIENT	240	5.7				
SUITE 5	620	INPATIENT	240	2.6				
SUITE 6	8,644	INPATIENT	240	36.0				
TOTAL	22,285			133.4				
E 9 OCC.	5,990	WAIT/LOBBY	15	399.3	HOR.=2	109.5	126	EXIT #3 EXIT #5
SUITE 1	832	CONF./MTG	15	55.5				
SUITE 2	2,272	BUSINESS	100	92.75				
TOTAL	16,094			547.5				
F 9 OCC.	6,479	KITCHEN	200	32.4	HOR.=2	44.1	114	EXIT #6 EXIT #7
SUITE 1	4,862	BUSINESS	100	48.6				
SUITE 2	2,091	CONF./MTG	15	139.4				
TOTAL	13,432			220.4				
TOTAL	89,355			1,325.4	HOR.=2	265.1	447	

## LEGEND

APPROVAL



PROJECT NAME

CHILDREN'S HOSPITAL  
OF ORANGE COUNTY  
455 S. Main St.  
Orange, CA 92668-3874

TOWER II



PROJECT NUMBER

12011.00  
Increment #7

OSHPD - PROJECT NUMBER

IL 072072-30

ISSUE

OSHPD PERMIT

DATE

01/27/2010

SCALE

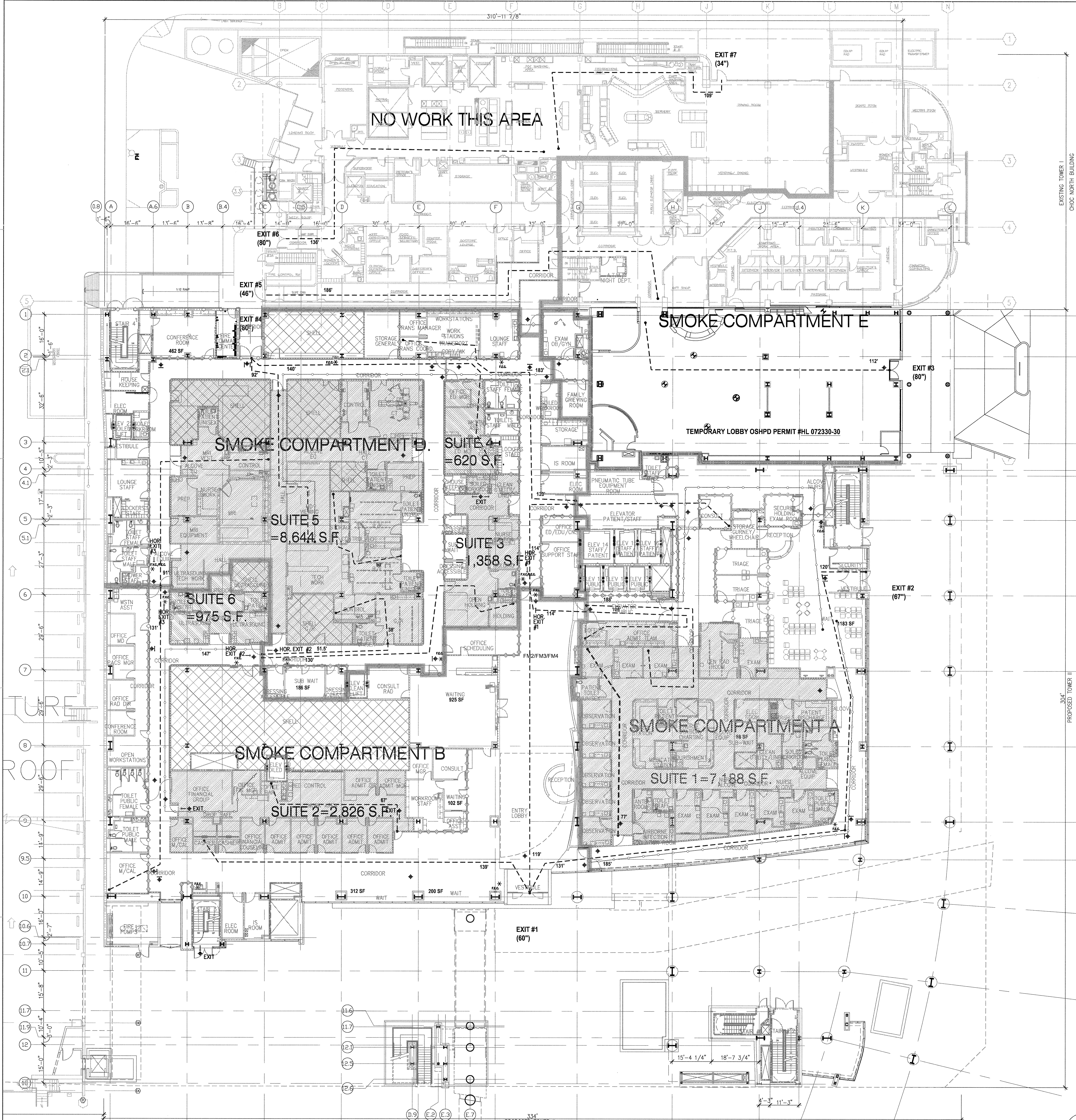
1/16" = 1' - 0"

DRAWING TITLE

LEVEL 1 LIFE SAFETY  
PLAN PHASE 1

DRAWING NUMBER

AC2.1PH1



## OVERALL LIFE SAFETY PLAN