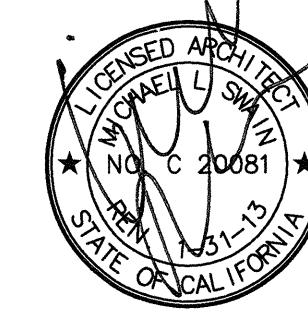


FKP Architects

ARCHITECT OF RECORD
Paul C. Glorid

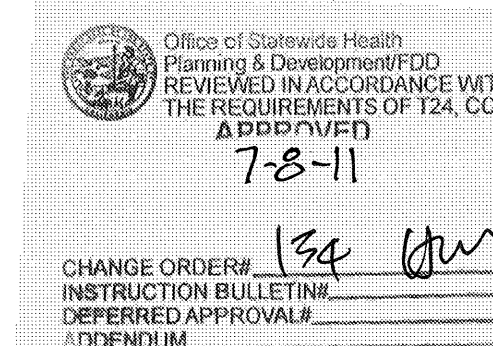


Changes on these drawings do not consist of
materially altered changes to approved drawings
and don't require a change order.
OSHPD review ADO
OSHPD review FLSO
OSHPD review DSE

REVISIONS

03/01/11 CO #134

APPROVAL



PROJECT NAME

CHILDREN'S HOSPITAL
OF ORANGE COUNTY

455 S. Main St.
Orange, CA 92668-3874

TOWER II RECEIVED
July 12 2011
McCarthy



PROJECT NUMBER

12011.00
Increment #7

OSHPD - PROJECT NUMBER
IL 072072-30

ISSUE
OSHPD PERMIT

DATE

01/27/2010

SCALE

1/16" = 1'-0"
DRAWING TITLE

LEVEL 2 LIFE SAFETY
PLAN-A

DRAWING NUMBER

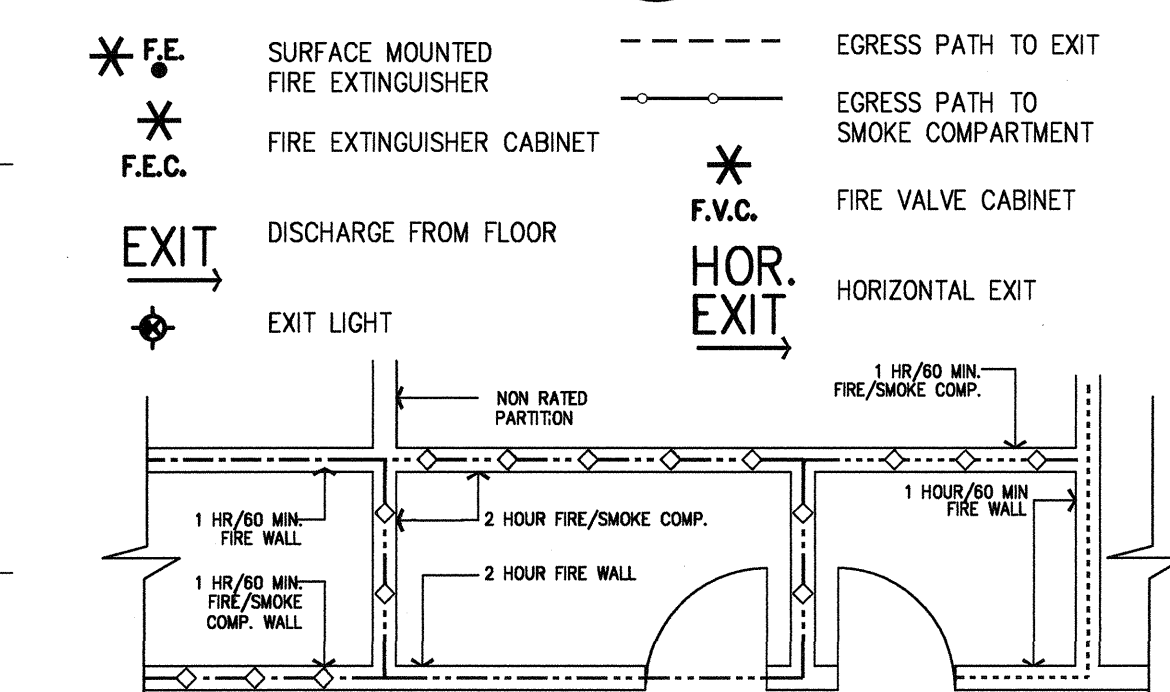
AC2.2A

1. Won door opening, 2 Hour Fire/Smoke.
2. Fire shutters to close opening to floor below. 1 1/2 Hour UL rated.
3. Open to below.
4. Won door opening, 2 Hour Fire/Smoke.
5. 12'x12' deck with benches.
6. 25'x25' deck.
7. 10'x5' deck with bench.
8. 6'-4"x7'-1" power walkway.
9. 6'x11' power walkway.
10. 33'x6' power walkway.
11. 118'-10"x6'-0" power walkway.
12. 6'-0"x11'-8" power walkway.
13. 6'-0"x15'-8" power walkway.
14. 10' high fence.
15. River rocks.
16. Le Veta Bridge is not a required egress component.
17. Powers.
18. Mat area, 16' diameter.
19. Mat area with CHOC logo, 23' diameter.
20. Landscaping, non-accessible. See Landscape drawings.

E1 NOTES TO SHEET

- A. INFORMATION SHOWN OR REFERENCED ON ENLARGED AND/OR 1/4" SCALE DRAWINGS WILL GENERALLY NOT BE SHOWN ON THE SMALLER SCALE DRAWINGS.
- B. PURPOSE OF THESE DRAWINGS: TO SHOW OVERALL BUILDING PLAN ORIENTATION, SMOKE COMPARTMENTS, SUITED AREAS, FIRE EXTINGUISHER CABINET LOCATIONS, PROPOSED GENERAL EXIT SIGNS FOR EGRESS ROUTING, EGRESS DISTANCES, WALKWAY CASE TO STAIRS OR HORIZONTAL EXIT, FIRE WALLS, OCCUPANT LOADING EXIT CALCULATIONS AND AREAS OF REFUGE CALCULATIONS.
- C. FIRE/SMOKE GRAPHICS LEGEND IS THE SAME FOR ALL PLAN SHEETS IN THE SET. TYPICAL CORRIDOR WALL RATING INDICATES MINIMUM ONE HOUR CORRIDOR WALLS, UNLESS OTHERWISE NOTED TO BE HIGHER RATED RESTRICTIONS. ALL DOORS IN TYPICAL CORRIDORS ARE NOT RATED. ALL WINDOWS IN TYPICAL CORRIDORS ARE NOT RATED, BUT LIMITED TO 25% OF THE INTERIOR SPACE FACING THE CORRIDOR WALL.
- D. SHELLED SPACE IS NOT FOR HOSPITAL USE UNTIL PROPOSED LAYOUT IS REVIEWED AND APPROVED BY OSHPD.
- E. IT IS THE INTENT THAT MATERIALS LISTED IN FIRE RATED DESIGNS IN THE DRAWINGS MATCH THOSE PRODUCTS INCLUDED IN THE PROJECT MANUAL (SPECIFICATIONS). SUBMITTAL OF MANUFACTURER'S PRODUCTS LISTED IN THE FIRE RESISTANT RATING TEST, BUT NOT SPECIFIED IN THE PROJECT MANUAL, WILL BE SUBJECT TO REJECTION. THIS INCLUDES BUT IS NOT LIMITED TO ALTERNATE MANUFACTURERS LISTED IN U.L. BUILDING MATERIALS DIRECTORY OR SIMILAR LITERATURE.
- F. IN THE EVENT OF A CONFLICT IN EITHER PUBLISHED TEST DATA INCLUDED IN THE DOCUMENTS AND/OR THE PROJECT MANUAL (SPECIFICATIONS), PLEASE NOTIFY THE ARCHITECT PRIOR TO PREPARATION OF SUBMITTAL DOCUMENTS AND/OR PURCHASE OF MATERIALS OR FABRICATION.
- G. UNDER NO CIRCUMSTANCE WILL BUILDING PRODUCTS REQUIRED BY FIRE-RATED ASSEMBLIES BE ACCEPTED WITHOUT INDEPENDENT TEST RESULTS FROM NATIONALLY RECOGNIZED TESTING LABORATORIES OR MODEL BUILDING CODE ORGANIZATIONS, AS APPROVED BY OSHPD.
- H. SEE PARTITION TYPES AND REFERENCE DETAILS FOR SOUND TRANSMISSION CLASS AND/OR FIRE RESISTANCE REQUIREMENTS.

D1 GENERAL NOTES



EXAMPLE - FIRE/SMOKE RATING

- TYPICAL CORRIDOR WALL [1 HOUR WALL/DOORS SMOKE-RATED/NON-RATED WINDOWS LIMITED IN SIZE(25% OF WALL)] CBC 407.3.
- ONE HOUR FIRE RATED WALL (OCCUPANCY SEPARATION) WITH 60 MIN. DOORS. CBC 508.
- ONE HOUR FIRE/SMOKE RATED WALL (OCCUPANCY SEPARATION) WITH 60 MIN. DOORS. CBC 709.
- TWO HOUR FIRE RATED WALL (SHAFT ENCLOSURE, OCCUPANCY SEPARATION & HORIZONTAL EXIT) WITH 90 MIN. DOORS. CBC 508, 707 & 1022.
- TWO HOUR FIRE/SMOKE RATED WALL (SHAFT ENCLOSURE/SMOKE COMPARTMENT) WITH 90 MIN. DOORS. CBC 404.4 & 707.
- 3 HOUR RATED WALL (OCCUPANCY SEPARATION) 180 MIN. DOORS. CBC 715.
- 3 HOUR FIRE/SMOKE RATED WALL (OCCUPANCY SEPARATION/SMOKE COMPARTMENT) 180 MIN. DOORS. CBC 404.4 & 715.
- 4 HOUR RATED WALL (OCCUPANCY SEPARATION) 180 MIN. DOORS. CBC 715.
- SMOKE COMPARTMENT WALLS-ONE HOUR RATE WITH 60 MIN. DOORS. CBC 407.4, 709 & 715.
- DISCHARGE PATH TO PUBLIC WAY

- Suites
- Shell Space
- Area of refuge. (Rescue Assistance)
Code Requirement: 200 Occupants per one area of refuge. Level 2 $1,054.3/200 = 5.3$ min.

LEVEL 2 SMOKE COMPARTMENT AND EXITING CALCULATIONS:									
FIRE COMP & OCC.	AREA (SF)	OCCUPANT TYPE	LOAD FACTOR	OCCUPANTS	REQUIRED EXIT (IN)	WIDTH REQ. (IN)	WIDTH PROVIDED (IN)	EXITS	
A	0	0	0	0	HOR.=2 VERT.=3	0	0	0	
B OCC.	17,916	BUSINESS	100	179.2	HOR.=2 VERT.=3	71.2	81	STAIR #3 (45), HOR. EXIT # (36) OF 60	
	2,172	CONF	15	144.8					
	813	LIBRARY	50	16.3		106.9	112.5	STAIR #3 (58.5), HOR. EXIT # (54) OF 60	
	640	MEDITATION	40	16				* HOR. EXITS=MAX. 1/2 REQ'D. EXITS-CBC 1022.1	
TOTAL	21,541			356.2					
C	4,967	INPATIENT	240	20.7	HOR.=2 VERT.=3	98.5	105	STAIR #1 (45), HOR. EXIT # (60) OF 60	
	1,418	ACTIVITY	15	94.5					
	325	CONF	15	21.7		147.7	155	STAIR #1 (57), HOR. EXIT # (60) OF 60	
	2,035	O.D. ACTIVITY	15	35.7				* HOR. EXITS=MAX. 1/2 REQ'D. EXITS-CBC 1022.1	
	10,184	BUSINESS	100	101.8					
	140	WAITING	15	9.3					
	1,014	BOARD ROOM	15	67.6					
	545	CONFERENCE	15	36.3					
SUITE 3	1,151	INPATIENT	240	4.8					
TOTAL	21,778			492.5				* HOR. EXITS=MAX. 2/3 REQ'D. EXITS-CBC 1022.1	
D	11,251	INPATIENT	240	46.7	HOR.=2 VERT.=3	86.6	102	STAIR #4 (45), HOR. EXIT # (52) OF 60	
	1,002	ACTIVITY	15	150.9					
	1,574	P. DINING	15	105.0		129.9	148	STAIR #4 (62), HOR. EXIT # (44), HOR. EXIT # (22) OF 60	
	1,811	KITCHEN	200	9.1					
	1,076	O.D. DINING	15	17.8					
	1,825	O.D. ACTIVITY	15	128.3					
SUITE 1	2,066	BUSINESS	100	20.6					
	65	WAIT	15	4.3					
SUITE 2	1,962	BUSINESS	100	19.6					
	57	WAIT	15	3.8					
TOTAL	18,683			432.9				* HOR. EXITS=MAX. 2/3 REQ'D. EXITS-CBC 1022.1	
TOTAL	62,003			1,282	HOR.=2 VERT.=3	288.3 384.5	288.0 418.5		

LOWER TWO SMOKE COMPARTMENT REFUGE AREA CALCULATIONS:									
COMPARTMENTS & OCCUPANCY:	AREA (SF)	ADJOINING SMOKE COMP. (SF)	OCCUPANT LOAD	REQ. SF PER OCCUP. (SF)	REQ. AGGREGATE SMOKE AREA (SF)	AGGREGATE SMOKE AREA PROVIDED (SF)			
A	21,541	-	492.5	6	2,955.0	9,315	CORRIDOR		
B OCC.	-	432.9	6	2,597.4	5,552.4	9,315	TOTAL		
C	21,778	-	356.2	6	2,137.2	5,027	CORRIDOR		
D OCC.	-	432.5	6	2,137.2	5,027	5,027	TOTAL		
E	18,683	-	356.2	6	2,137.2	2,453	CORRIDOR		
F OCC.	-	492.5	6	2,955.0	1,574	4,027	D. PUBLIC DINING		
TOTAL	-	-	-	-	5,092.2	5,027	TOTAL		

A1 LEGEND

A6 OVERALL LIFE SAFETY PLAN

\\MESA-OFFSITE\CADSERVER\06X0102.CHOC.TOWER.2.SHELL.BUILDING\FKP CONTRACTED PROJECTS\PROJECT INCREMENTS\WORK.007.TENANT IMPROVEMENT\OSHPD PERMIT (CONSTRUCTION DOCUMENTS)\06022A.DWG AC2.2A LEVEL 2 LIFE SAFETY PLAN-A.DWG
6/29/2011 3:07