

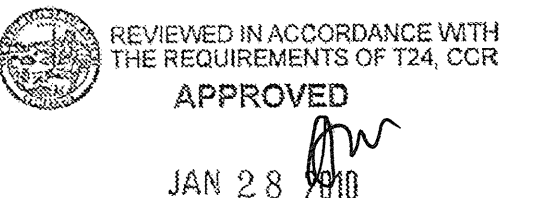
FKP Architects

ARCHITECT OF RECORD
Paul C. Glorid



REVISIONS

APPROVAL



Office of Statewide Health Planning & Development
FACILITIES DEVELOPMENT DIVISION

PROJECT NAME
CHILDREN'S HOSPITAL OF ORANGE COUNTY
455 S. Main St.
Orange, CA 92668-3874

TOWER II



PROJECT NUMBER

12011.00
Increment #7

OSHPD - PROJECT NUMBER
IL 072072-30

ISSUE
OSHPD PERMIT

DATE

01/27/2010

SCALE

1/16" = 1'-0"

DRAWING TITLE

LEVEL 3 LIFE SAFETY PLAN-B STORAGE AREAS

DRAWING NUMBER

AC2.3B

HOSPITAL GENERAL STORAGE TABULATION (2007 CBC 1224.14.2.12) FOR EXISTING NORTH TOWER. 208 TOTAL BEDS AT 20 SF PER BED = 4,160 SF TOTAL AREA REQUIRED, 1,799 SF PROVIDED.

LEVEL	ROOM NAME	ROOM NUMBER	AREA (SF)	TOTAL (SF)
LOWER	EXISTING STORAGE	LL.1	231	484
	EXISTING STORAGE	LL.2	253	
THREE	EXISTING STORAGE	3.1	109	352
	EXISTING STORAGE	3.2	145	
	EXISTING STORAGE	3.3	138	
FOUR	EXISTING STORAGE	4.1	197	346
	EXISTING STORAGE	4.2	149	
FIVE	EXISTING STORAGE	5.1	200	318
	EXISTING STORAGE	5.2	118	
SIX	EXISTING STORAGE	6.1	259	259
TOTAL				1,799

HOSPITAL GENERAL STORAGE TABULATION (2007 CBC 1224.14.2.12) FOR NEW TOWER EXPANSION. 176 TOTAL BEDS AT 20 SF PER BED = 3,520 SF TOTAL AREA REQUIRED, 5,892 SF PROVIDED.

LEVEL	ROOM NAME	ROOM NUMBER	AREA (SF)	TOTAL (SF)
LOWER	STORAGE GENERAL	8.071.08	154	885
	STORAGE GENERAL	8.036.01	296	
	STORAGE GENERAL	8.040.02	129	
	STORAGE GENERAL	8.034	103	
	STORAGE GENERAL	8.1000	203	
ONE	STORAGE GENERAL	1.070.04	250	250
	STORAGE GENERAL	2.004	305	
TWO	STORAGE GENERAL	2.037.04	100	741
	STORAGE GENERAL	2.037.09	110	
	STORAGE GENERAL	2.046	121	
	STORAGE GENERAL	2.018	105	
THREE	STORAGE GENERAL	3.065	232	1,261
	STORAGE GENERAL	3.065.A	207	
	STORAGE GENERAL	3.108	159	
	STORAGE GENERAL	3.001.22	215	
	STORAGE GENERAL	3.001.24	295	
	STORAGE GENERAL	3.001.26	153	
	STORAGE GENERAL	3.001.10	117	
FOUR	STORAGE GENERAL	4.052.01	65	925
	STORAGE GENERAL	4.120	189	
	STORAGE GENERAL	4.082	671	
	STORAGE GENERAL	5.081	197	
SIX	STORAGE GENERAL	6.003	189	472
	STORAGE GENERAL	6.120	283	
SEVEN	STORAGE GENERAL	7.001	430	708
	STORAGE GENERAL	7.020	278	
ROOF	STORAGE GENERAL	8.141	460	460
TOTAL				5,919

OVERALL HOSPITAL TOTAL	REQUIRED AREA (SF)	PROVIDED AREA (SF)
EXISTING NORTH TOWER 1	4,160	1,799
NEW TOWER II	3,520	5,919
OVERALL TOTAL	7,680	7,718

02 STORAGE TABULATION

LEVEL 3 SURGERY (ENDO) SOILED ROOM TABULATION (2007 CBC 1224.15.3.7):

NUMBER OF OPERATING ROOMS	SF PER OPERATING ROOM	TOTAL SF REQUIRED	ROOM NAME	ROOM NUMBER	AREA (SF)	TOTAL AREA PROVIDED (SF)
6	24	144	SOILED WORKROOM	3.106.09	150	150

LEVEL 3 SURGERY (ENDO) EQUIPMENT STORAGE TABULATION (2007 CBC 1224.15.3.10):

NUMBER OF OPERATING ROOMS	SF PER OPERATING ROOM	TOTAL SF REQUIRED	ROOM NAME	ROOM NUMBER	AREA (SF)	TOTAL AREA PROVIDED (SF)
6	50	300	STORAGE EQUIPT.	3.106.01.C	300	300

LEVEL 3 SURGERY SOILED WORKROOM TABULATION (2007 CBC 1224.15.3.7):

NUMBER OF OPERATING ROOMS	SF PER OPERATING ROOM	TOTAL SF REQUIRED	ROOM NAME	ROOM NUMBER	AREA (SF)	TOTAL AREA PROVIDED (SF)
9	24	216	SOILED WORKROOM	3.001.33	90	249
			SOILED HOLDING	3.001.26.B	159	

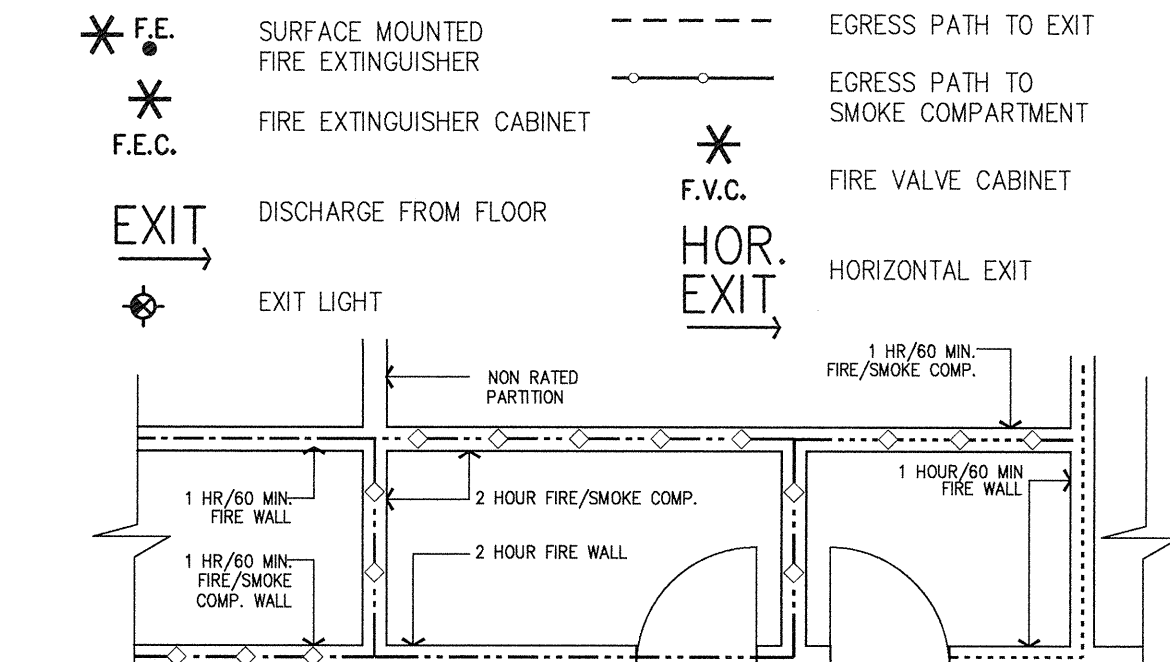
LEVEL 3 SURGERY EQUIPMENT STORAGE TABULATION (2007 CBC 1224.15.3.10):

NUMBER OF OPERATING ROOMS	SF PER OPERATING ROOM	TOTAL SF REQUIRED	ROOM NAME	ROOM NUMBER	AREA (SF)	TOTAL AREA PROVIDED (SF)
9	50	450	STORAGE EQUIPT.	3.001.26.C	452	452

C2 EQUIPMENT STORAGE TABULATION

SEE GENERAL NOTES ON SHEET AC2.3A

B2 GENERAL NOTES



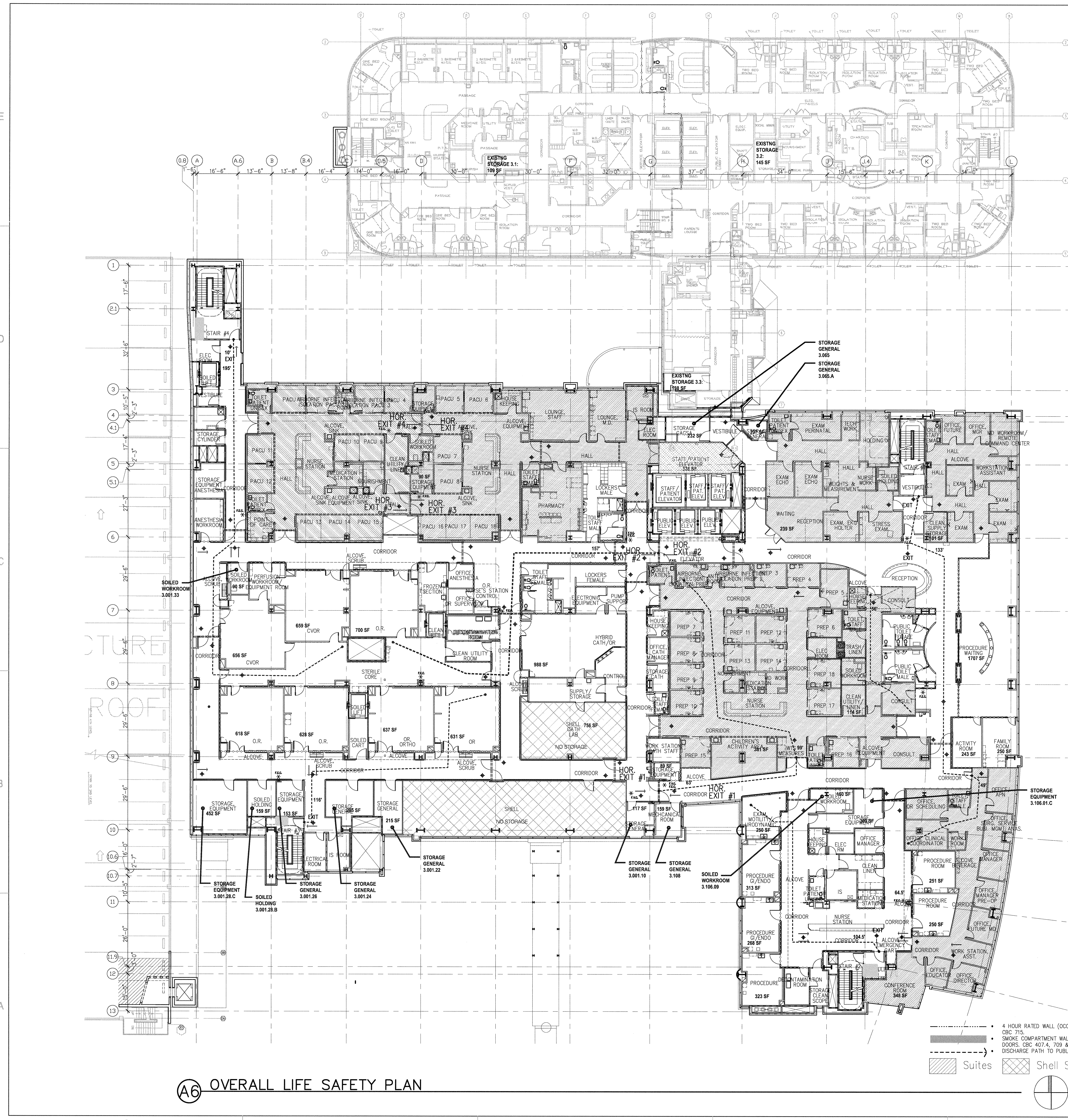
EXAMPLE - FIRE/SMOKE RATING

- TYPICAL CORRIDOR WALL (1 HOUR WALL/DOORS SMOKE-RATED/NON-RATED WINDOWS LIMITED IN SIZE(25% OF WALL)) CBC 407.3.
- ONE HOUR FIRE RATED WALL (OCCUPANCY SEPARATION) WITH 60 MIN. DOORS. CBC 508.
- ONE HOUR FIRE/SMOKE RATED WALL (OCCUPANCY SEPARATION) WITH 60 MIN. DOORS. CBC 709.
- TWO HOUR FIRE RATED WALL (SHAFT ENCLOSURE, OCCUPANCY SEPARATION & HORIZONTAL EXIT) WITH 90 MIN. DOORS. CBC 508, 707 & 1022.
- TWO HOUR FIRE/SMOKE RATED WALL (SHAFT ENCLOSURE/SMOKE COMPARTMENT) WITH 90 MIN. DOORS. CBC 404.4 & 707.
- 3 HOUR RATED WALL (OCCUPANCY SEPARATION) 180 MIN. DOORS. CBC 715.
- 3 HOUR FIRE/SMOKE RATED WALL (OCCUPANCY SEPARATION/SMOKE COMPARTMENT) 180 MIN. DOORS. CBC 404.4 & 715.

A2 LEGEND

- 4 HOUR RATED WALL (OCCUPANCY SEPARATION) 180 MIN. DOORS. CBC 715.
- SMOKE COMPARTMENT WALLS—ONE HOUR RATE WITH 60 MIN. DOORS. CBC 407.4, 709 & 715.
- DISCHARGE PATH TO PUBLIC WAY
- Suites
- Shell Space

A6 OVERALL LIFE SAFETY PLAN



© FKP/CHOC/12002-00/CHOC/SHEETS/ACTIVE/00/AC2_SERIES/AC2.3B_LEVEL_3_LIFE_SAFETY_PLAN-B.DWG
 1/22/2010
 A6/11A