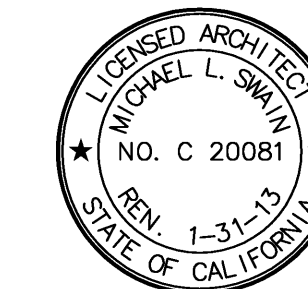


FKP Architects

ARCHITECT OF RECORD
Paul C. Gloriot

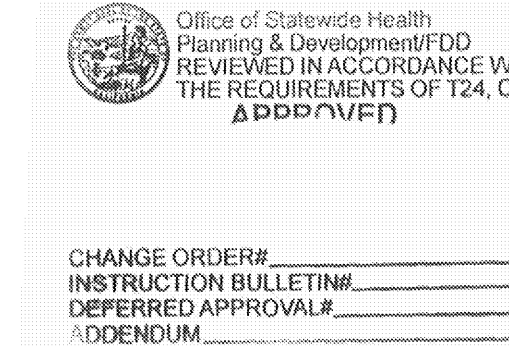


Changes on these drawings do not consist of
materially altered changes to approved drawings
and don't require a change order.
OSHPD review ACO
OSHPD review FLSO
OSHPD review DSE

REVISIONS

10/24/11 ASH115

APPROVAL



PROJECT NAME

CHILDREN'S HOSPITAL
OF ORANGE COUNTY

455 S. Main St.
Orange, CA 92668-3874

TOWER II RECEIVED
October 24 2011
McCARTHY



PROJECT NUMBER

12011.00
Increment #7

OSHPD - PROJECT NUMBER
IL 072072-30

ISSUE
OSHPD PERMIT

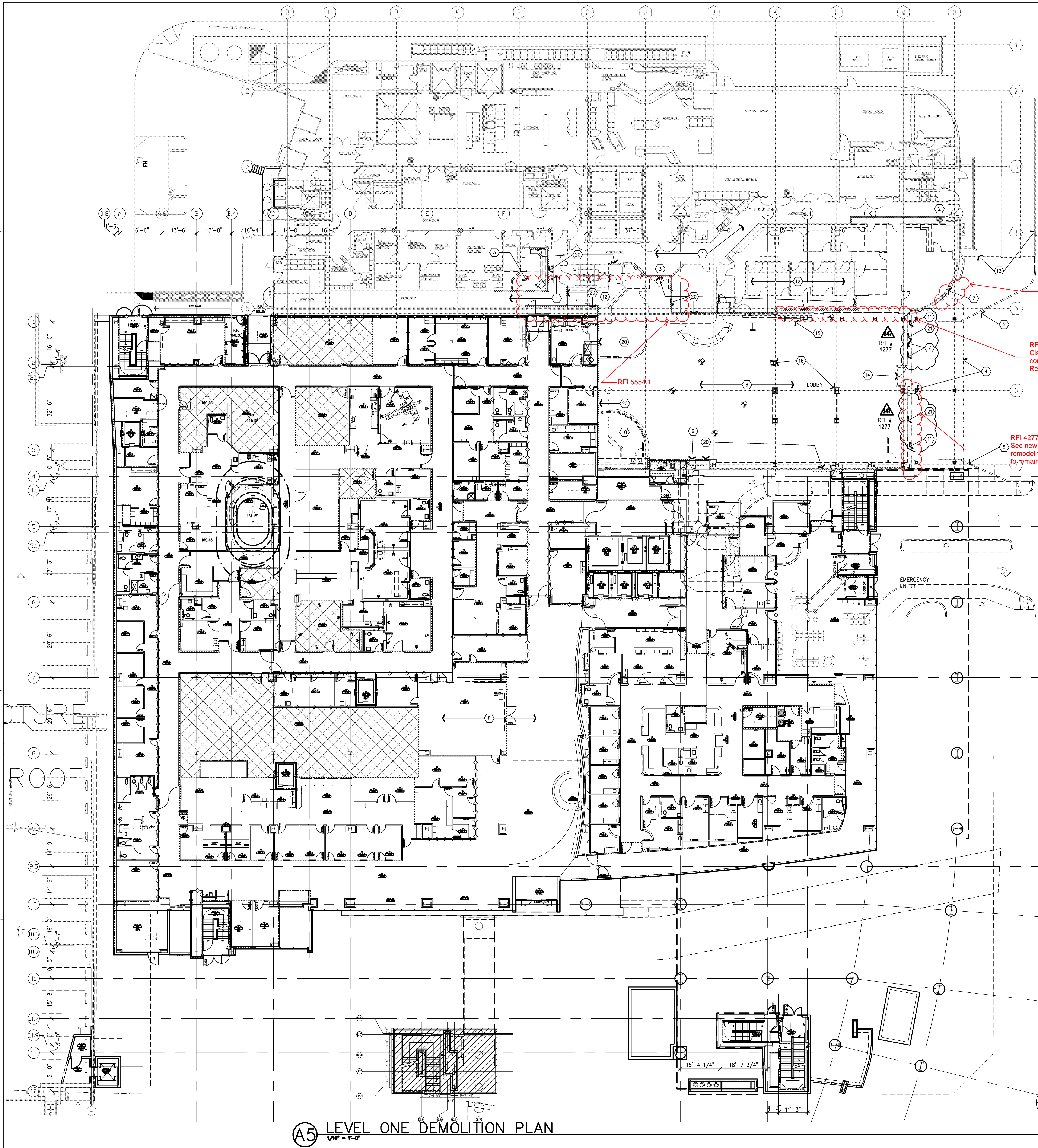
DATE
01/27/2010

SCALE
1/16" = 1'-0"

DRAWING TITLE
LEVEL ONE DEMO PLAN

DRAWING NUMBER

AD1.0



D1 LOWER LEVEL DEMOLITION PLAN
NORTH TOWER

C1 NOTES TO SHEET

B1 DEMOLITION NOTES

A1 LEGEND

- Exit passageway, clear and clean path to be maintained at all times.
- Maintain clear and clean path to designated exit at all times.
- Lobby entrance from North Tower to be closed during renovation.
- Canopy and structural frame (installed under Temporary Lobby permits) to remain. See exterior elevation for modifications.
- Portion of curb to be removed. See site plan in Increment #3A for new curb.
- Lobby shell to be demolished. Refer to MEP drawings for utilities.
- Remove glass and horizontal mullion at this location only.
- Remove all "radio" and "television" equipment to be done within this area.
- Door, frame and hardware to be salvaged.
- "Radio Laptop" broadcasting equipment/console to be removed, salvaged/re-installed in room no. 2.0075.00a, level 2, Tower II.
- Existing Exterior Finish to remain. Patch as needed. Point to match new tower plaster. Point Finish.
- Vacant Area. No work to be done within this area.
- Portion of curb and sidewalk to remain.
- Lobby door and hardware to remain. Verify condition and repair as needed.
- Remove telephone, counters and screen walls.
- Structural columns to remain. Remove column enclosure and replace "sprayed-on" fireproofing as required to adhere to required depth of fire proofing. Typical of all columns to remain.
- Remove walls, door, frame and hardware. Patch wall and floor.
- Remove all "radio" and "television" equipment to be done within this area.
- Mechanical equipment to be removed (dashed). See Mechanical and Electrical drawings.
- Coordinate location of new fire alarm in shop for new equipment. Fill and patch existing trenches not used with new equipment.
- Provide temporary partition type 1-45 or 24-45, 1-hour fire rated.
- Existing storefront to remain. Remove existing glazing at bottom half (only) of each storefront and replace with approved panel - type 7.

- A. Field verify all existing conditions and dimensions.
B. Demolition quantities are unspecified except where existing construction is graphically designated or noted to remain. Where partitions, ceilings, floors etc. are shown to be removed, demolition shall be inclusive of MEP services/utilities contained within, unless scheduled or noted to remain or be extended. For additional demolition and salvage requirements see Civil, Structural, Mechanical, Electrical and Plumbing Documents. See New Construction Document tie-ins to existing systems, services and materials to fully determine actual demolition limits.
C. The Owner reserves the right to retain the following salvage items, if so notified (and if not specifically incorporated or reused in this project). Carefully remove, tag, transport, and store in Owner designed storage space (on campus) the following items:
D. Should the Owner decline to accept and provide storage for any of the above, they shall be come property of the Contractor, and must be promptly removed from the site.
E. Remove all attachments found on partition faces and ceilings, and turn over to Owner, i.e. surface mounted toilet accessories, (soap dispensers) cubicle curtain tracks, TV wall mounting brackets, etc.
F. Removal of any antennas or computer and telephone cable and/or system boards must be coordinated and scheduled with the Owner.
G. Protect by appropriate means all existing construction, finishes, and equipment that is to remain. All damaged items/finishes must be repaired/restored to their original (PRE-DAMAGED) condition.
H. Demolition requiring air hammers or other loud noise generating equipment must be carefully coordinated and scheduled with the Owner. Working hours for such activity will be restricted.
I. All penetrations found in existing chases and fire-rated partitions or shafts, not specifically called out, must be patched/fire-sealed to meet the required fire assembly rating.
J. Where imbedded items or plumbing fixtures, etc. are removed, patch/repair the existing construction to remain to match and to maintain the structural and/or fire protection integrity of the floor or wall.
K. After removal of existing construction or finishes, patch or repair existing substrates remaining as required to receive the scheduled finish. Refer to new construction documents for additional information.
L. Carefully remove, tag, transport, and store in owner designated storage space (on campus) toolboxes, signage, and hardware and store in owner designated storage.

- CONSTRUCTION SEQUENCE SENSITIVE
INFILL PARTITION
TEMPORARY NOISE/DUST BARRIER, 1
HOUR FIRE-RATED AND 20 MINUTE
OPENINGS
-- OPENING TO REMAIN
-- PARTITION DEMO
-- PARTITION TO REMAIN
-- PARTITION/OPENING TO BE REMOVED
-- ITEM/AREA TO BE DEMOLISHED -
REMOVE BACK TO STRUCTURE TO LIMITS
INDICATED.

A5 LEVEL ONE DEMOLITION PLAN
1/16" = 1'-0"