

FKP Architects

ARCHITECT OF RECORD

Paul C. Gloriod

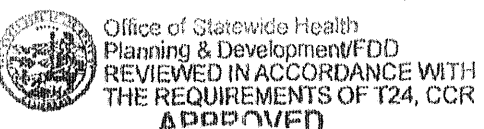


Changes on these drawings do not consist of materially altered changes to approved drawings and don't require a change order.
OSHPD review ACO _____
OSHPD review FLSO _____
OSHPD review DSE _____

REVISIONS

09/19/11 CHANGE ORDER #257

APPROVAL



CHANGE ORDER #257
INSTRUCTION BULLETIN
DEFERRED APPROVAL #
TODENAM

PROJECT NAME

CHILDREN'S HOSPITAL
OF ORANGE COUNTY

455 S. Main St.
Orange, CA 92868-3874

TOWER II RECEIVED
SEPT. 21 2011
McCARTHY



PROJECT NUMBER

12011.00
Increment #7

OSHPD - PROJECT NUMBER

IL 072072-30

ISSUE

OSHPD PERMIT

DATE

01/27/2010

SCALE

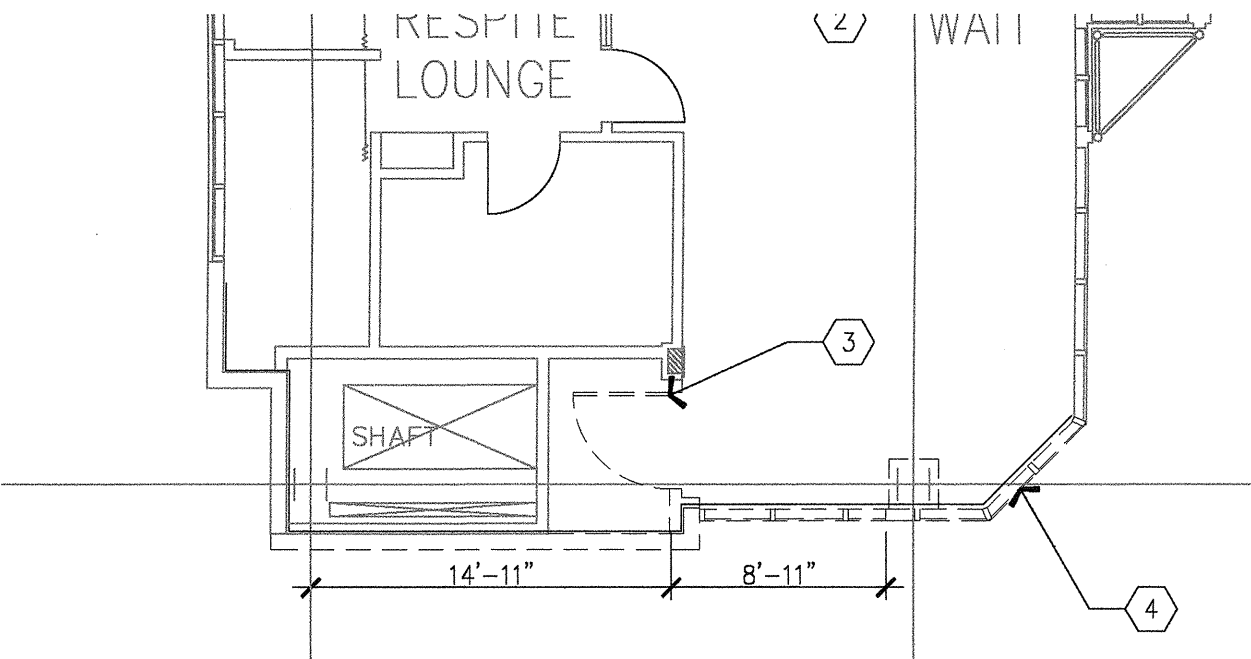
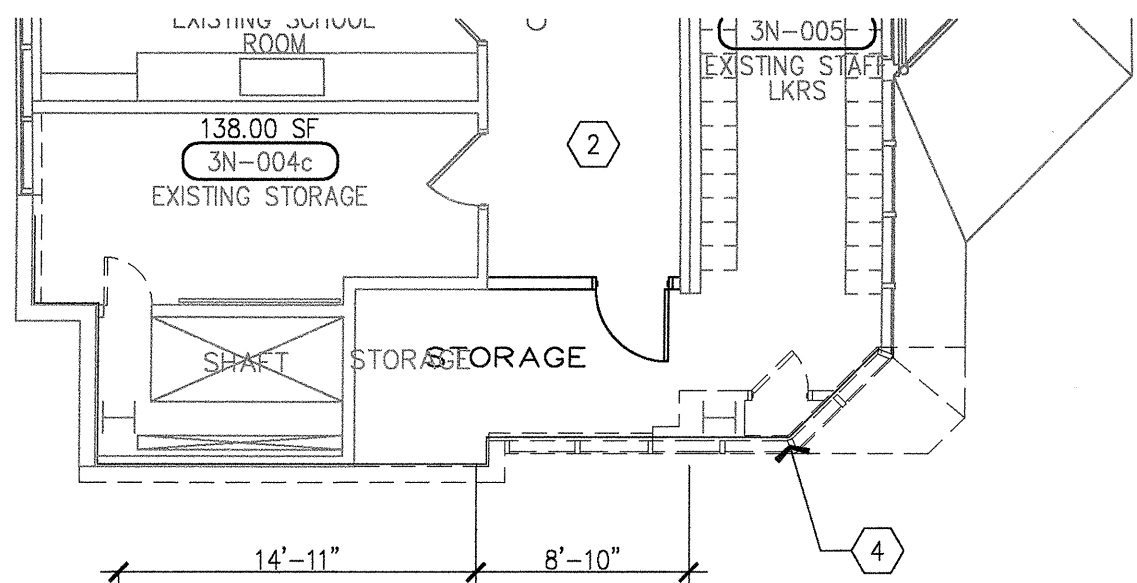
1/8" = 1'-0"

DRAWING TITLE

LOWER LEVEL- LEVEL
2-3-6 DEMO PLANS

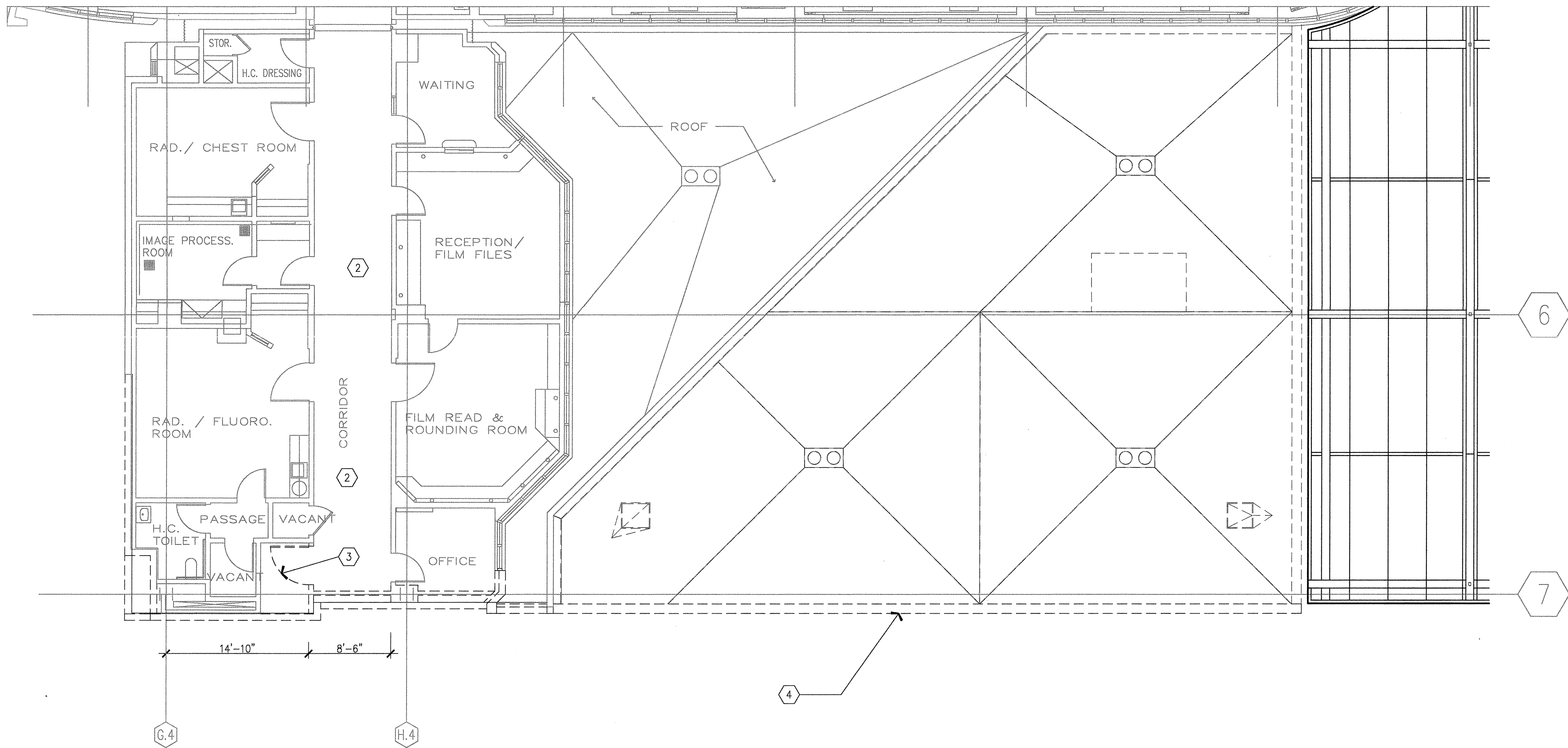
DRAWING NUMBER

AD1.1

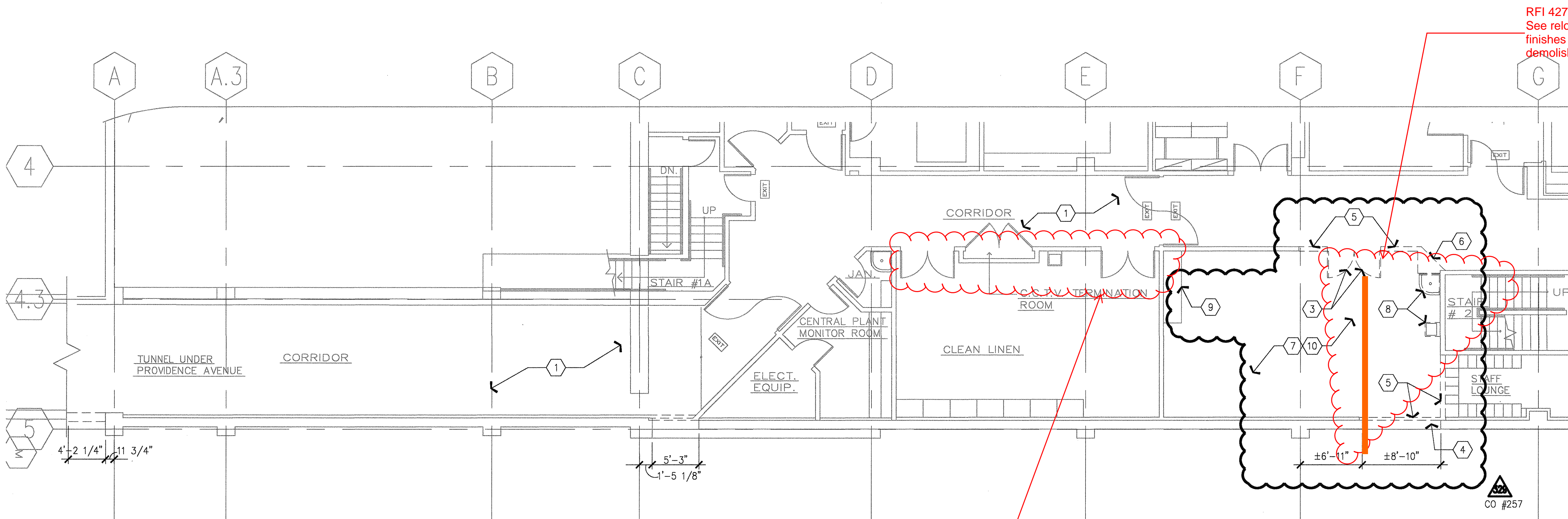


D6 LEVEL 3 DEMO
1/8" = 1'-0"

D4 LEVEL 6 DEMO
1/8" = 1'-0"



B6 LEVEL 2 DEMO
1/8" = 1'-0"



A6 LOWER LEVEL DEMO
1/8" = 1'-0"

RFI 4273
See relocation of
finishes and outlets for
demolished wall

1. Exit passageway, clear and clean path to be maintained at all times.
2. Maintain clear and clean path to designated exit at all times.
3. Door, frame and hardware to be salvaged.
4. Remove portion of the exterior wall. Refer to elevations for location.
5. Remove walls, door, frame & hardware as needed.
6. Remove and relocate existing convenience power outlet.
7. Remove existing suspended ceiling, grid, light fixtures and mechanical diffusers this room. Salvage and store fixtures and diffusers.
8. Remove existing plumbing fixtures.
9. Existing utility soffit to remain.
10. Remove flooring and prep for new finishes as required per manufacturer's requirements.

A3 NOTES TO SHEET
1/8" = 1'-0"

- CONSTRUCTION SEQUENCE SENSITIVE INFILL PARTITION
- TEMPORARY NOISE/DUST BARRIER
- OPENING TO REMAIN
- PARTITION DEMO
- PARTITION TO REMAIN
- PARTITION/OPENING TO BE REMOVED.
- ITEM/AREA TO BE DEMOLISHED — REMOVE BACK TO STRUCTURE TO LIMITS INDICATED.

A2 LEGEND

- A. Field verify all existing conditions and dimensions.
- B. Demolition quantities are unclassified except where existing construction is graphically designated or noted to remain. Where partitions, ceilings, doors etc. are shown to be removed, demolition shall be inclusive of MEP services/utilities contained within, unless scheduled or noted to remain or be extended. For additional demolition and salvage requirements see Civil, Structural, Mechanical, Electrical and Plumbing Documents. See New Construction Document tie-ins to existing systems, services and materials to fully determine actual demolition limits.
- C. The Owner reserves the right to retain the following salvage items, if so notified (and if not specifically incorporated or reused in this project). Carefully remove, tag, transport, and store in Owner designated storage space (on campus) the following items:
 - 1. All attachments found on partition faces and ceilings, and turn over to Owner, i.e. surface mounted toilet accessories, (soap dispensers) cubicle curtain tracks, TV wall mounting brackets, etc.
 - 2. Removal of any antennas or computer and telephone cable and/or system boards must be coordinated and scheduled with the Owner.
 - 3. Protect by appropriate means all existing construction, finishes, and equipment that is to remain. All damaged items/finishes must be repaired/restored to their original (PRE-DAMAGED) condition.
 - 4. Demolition requiring air hammers or other loud noise generating equipment must be carefully coordinated and scheduled with the Owner. Working hours for such activity will be restricted.
 - 5. All penetrations found in existing chases and fire-rated partitions or shafts, not specifically called out, must be patched/fire-sealed to meet the required fire assembly rating.
 - 6. Where imbedded items or plumbing fixtures, etc. are removed, patch/repair the existing construction to remain to match and to maintain the structural and/or fire protection integrity of the floor or wall.
 - 7. After removal of existing construction or finishes, patch or repair existing substrates remaining as required to receive the scheduled finish. Refer to new construction documents for additional information.
 - 8. Carefully remove, tag, transport, and store in Owner designated storage space (on campus) topiaries, signage, and hardscape and store in owner designated storage

A1 DEMOLITION NOTES

N: \00000\0002 CHOC TOWER 2 SHELL BUILDING\KP CONTRACTED PROJECTS\PROJECT INCREMENTS\WCR_#07_EVANT IMPROVEMENT\OSHPD PERMIT (CONSTRUCTION DOCUMENTS)\100692.DWG
9/16/2011 GEORGINA