

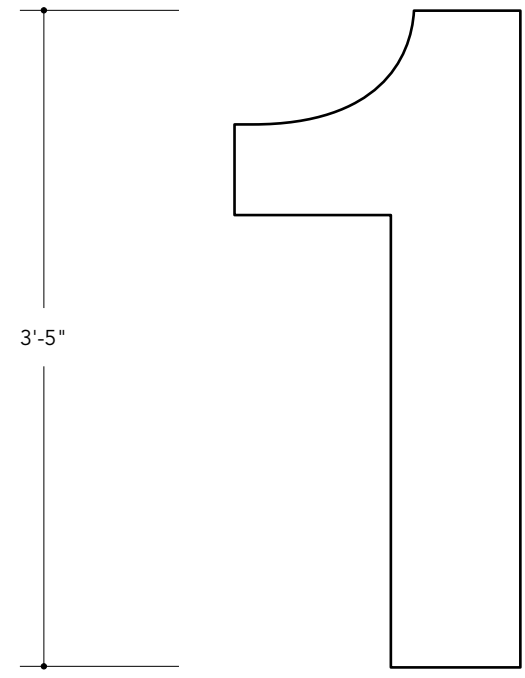
E

D

C

B

A



1 Level Identification
Scale: 1" = 1'-0" LID



2 Layouts
Scale: NTS LID



3FORM CHROMA
COBALT
LEVEL 1



3FORM CHROMA
ROSE
LEVEL 2



3FORM CHROMA
MARIGOLD 2 + GLOW 2
LEVEL 3



3FORM CHROMA
VITAMIN C + SEA
LEVEL 4



3FORM CHROMA
SURF 2
LEVEL 5



3FORM CHROMA
SASSY
LEVEL 6



3FORM CHROMA
BEWITCHED
LEVEL 6

LID: Level Identification

LIGHT SOURCE IS FLUORESCENT
OR LED - PROVIDE PRICING OPTIONS
FOR REVIEW

"UNEVEN" DECORATIVE WALL PANEL
WITH ACRYLIC "PUSH THROUGH" STYLE
FLOOR NUMBER

HARDWARE CATCH TO ALLOW
ACCESS TO REAR (CONCEALED)
BY OTHERS

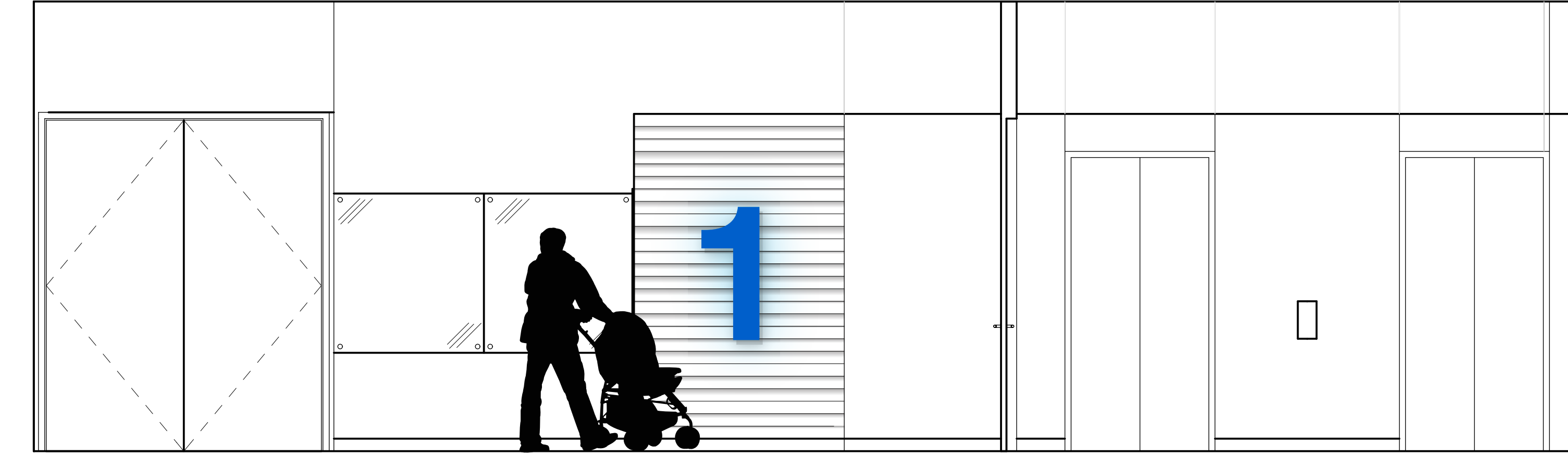
3FORM LEVEL NUMBERS PUSHES THROUGH
DECORATIVE WALL PANEL
(BY OTHERS) - COORDINATE WITH GC

LETTERFORM (NUMBER) IS TRANSLUCENT AND
FROSTED IN APPEARANCE

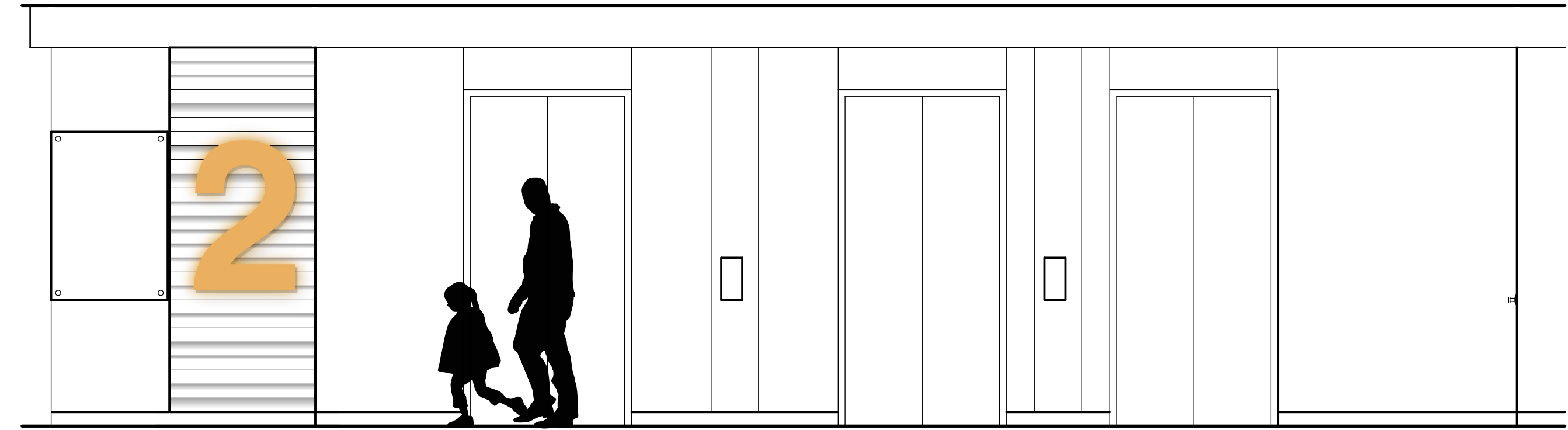
ILLUMINATION TO BE BRIGHT & EVEN
POWER TO LOCATION-BY GC

LIGHT SOURCE IS FLUORESCENT
OR LED (TBD) FABRICATOR TO PROVIDE
COST COMPARISON

3 Section
Scale: 1" = 1'-0" LID

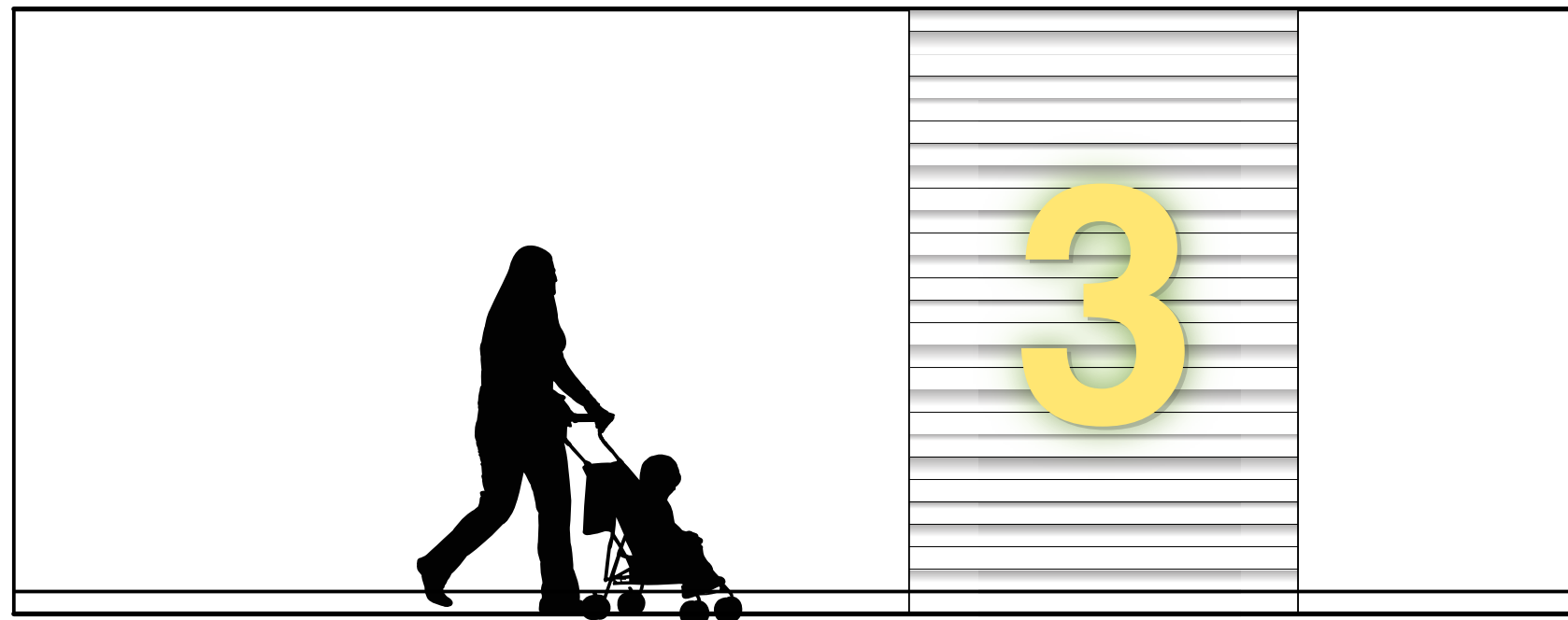


4 Elevation - Level 1
Scale: 3/8" = 1'-0" LID

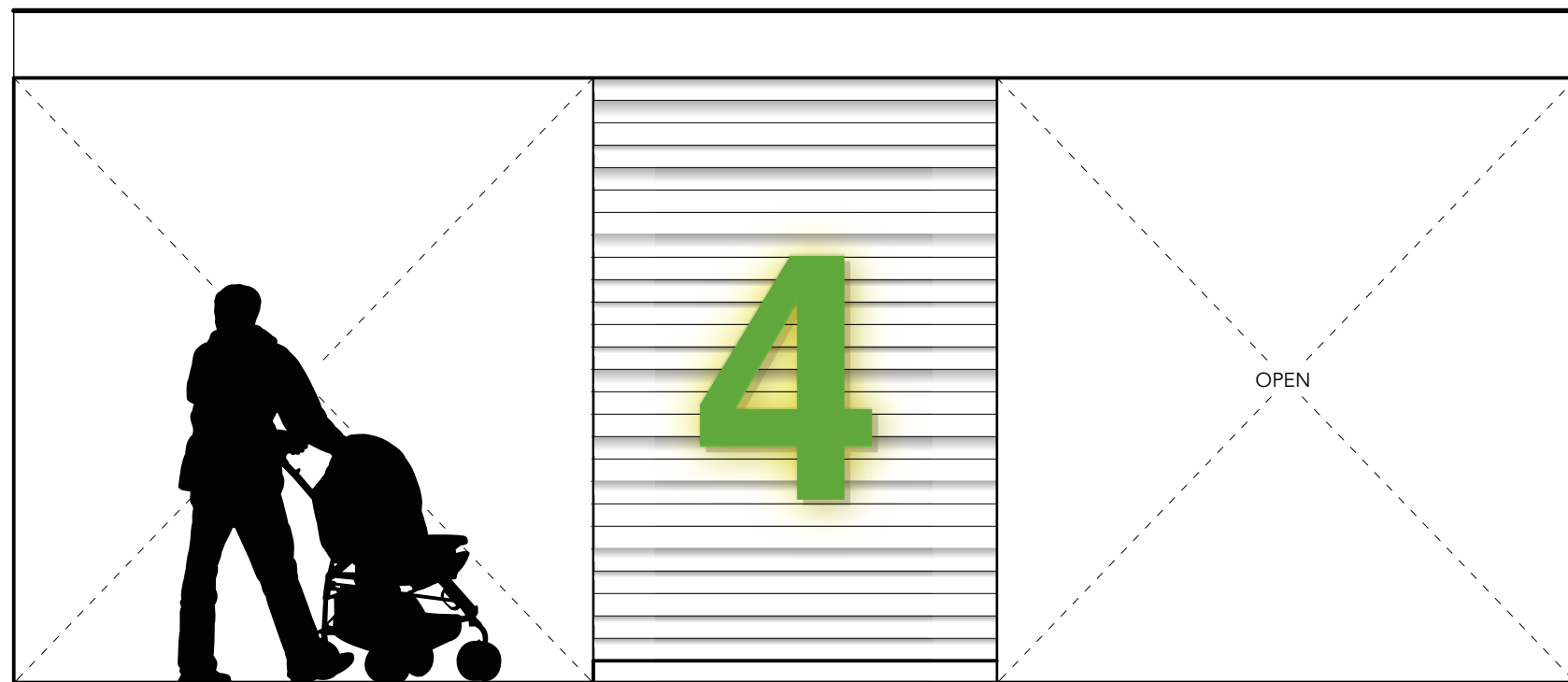


5 Elevation - Level 2
Scale: 3/8" = 1'-0" LID

LID: Level Identification

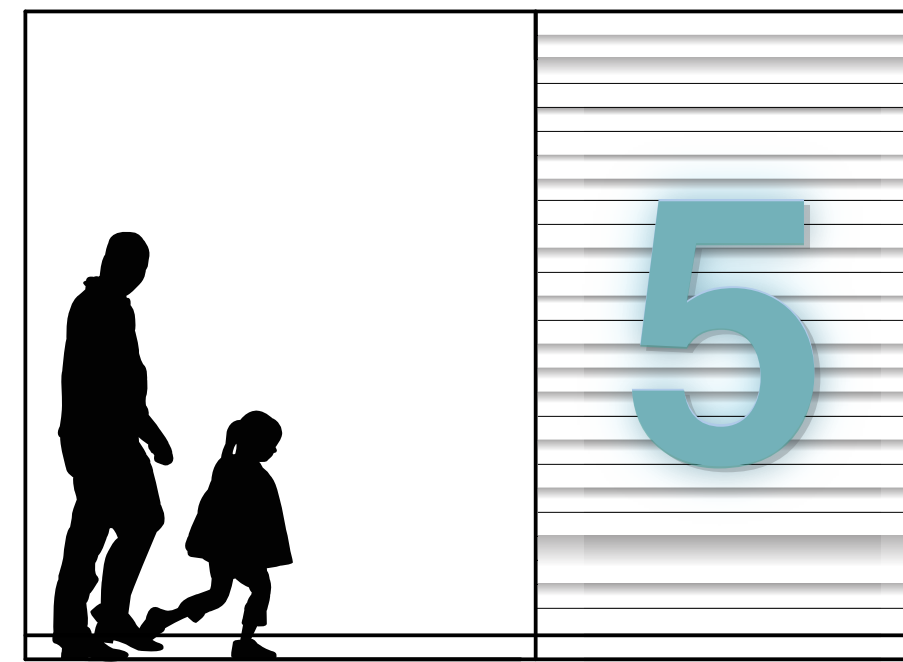


6 Elevation - Level 3
Scale: 3/8" = 1'-0" LID

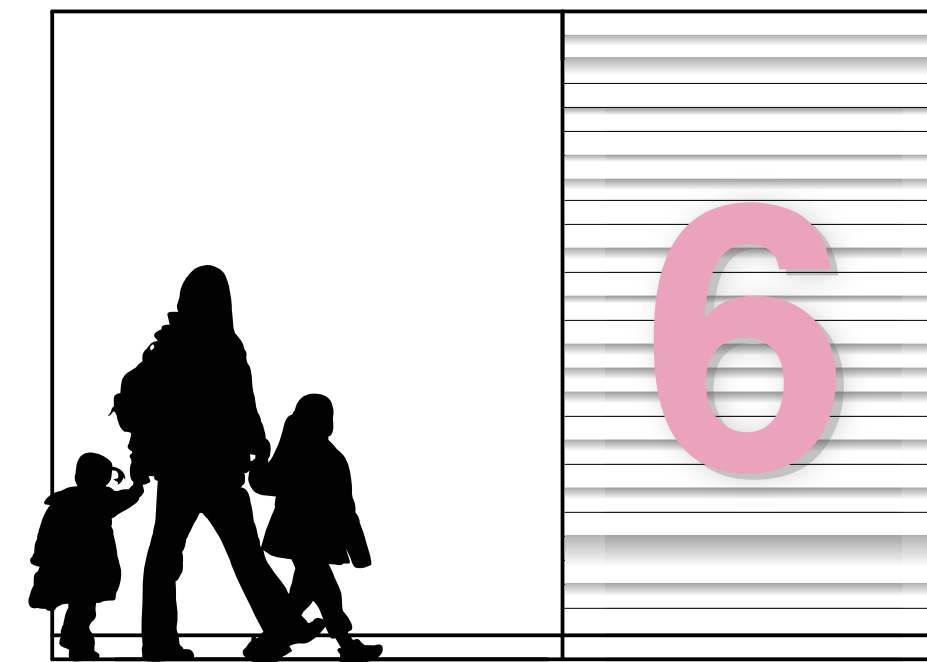


7 Elevation - Level 4
Scale: 3/8" = 1'-0" LID

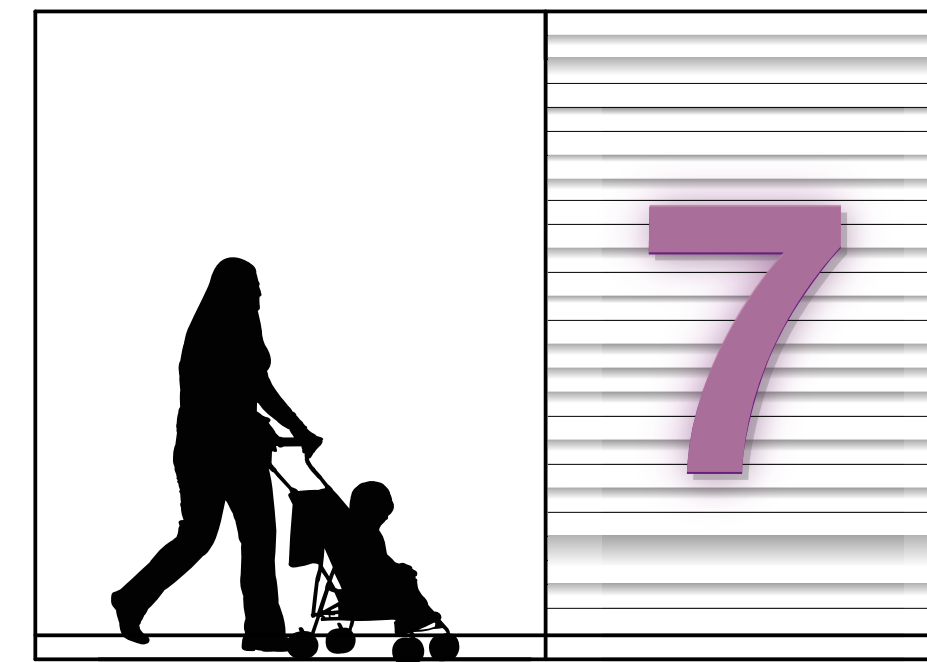
LID: Level Identification



8 Elevation - Level 5
Scale: 3/8" = 1'-0" LID

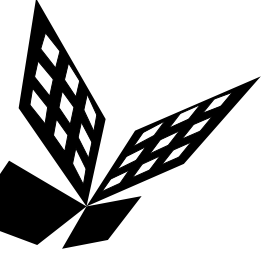


9 Elevation - Level 6
Scale: 3/8" = 1'-0" LID



10 Elevation - Level 7
Scale: 3/8" = 1'-0" LID

LID: Level Identification



FKP Architects

ARCHITECT OF RECORD

*Architect of Record signature line only; this drawing was not prepared under the direct supervision of the Architect of Record. The direct responsibility for preparation of this sheet lies with its corresponding professional stamp and signature. The signature of the Architect of Record in general responsible change of the project is provided as required by Title 24, Part 1, Section 7-115 (a).

ARCHITECT - PAUL C. GLORIOD

CONSULTANT



REVISIONS

△	08/31/09	ISSUED FOR FGMP
△	03/16/12	ASI #183

APPROVAL

PROJECT NAME

CHILDREN'S HOSPITAL
OF ORANGE COUNTY

455 S. Main St.
Orange, CA 92868-3874

TOWER II



PROJECT NUMBER

12011.00
Increment #7

OSHPO - PROJECT NUMBER
IL 072072-30

ISSUE

Issue for FGMP

DATE

08/31/2009

SCALE

AS NOTED

DRAWING TITLE

WAYFINDING GRAPHICS

DRAWING NUMBER

AGC14.0

6

5

4

3

2

1