

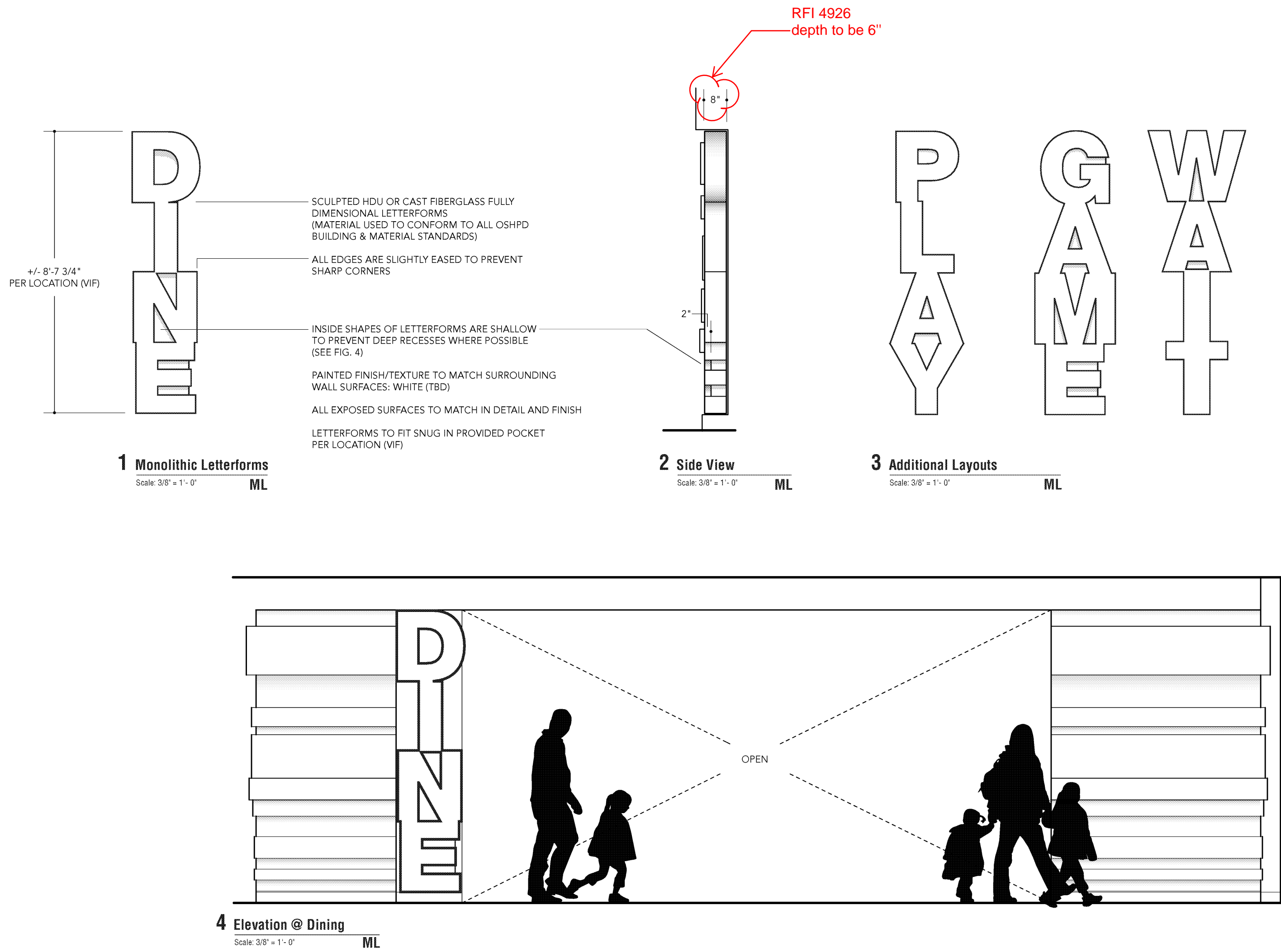
E

D

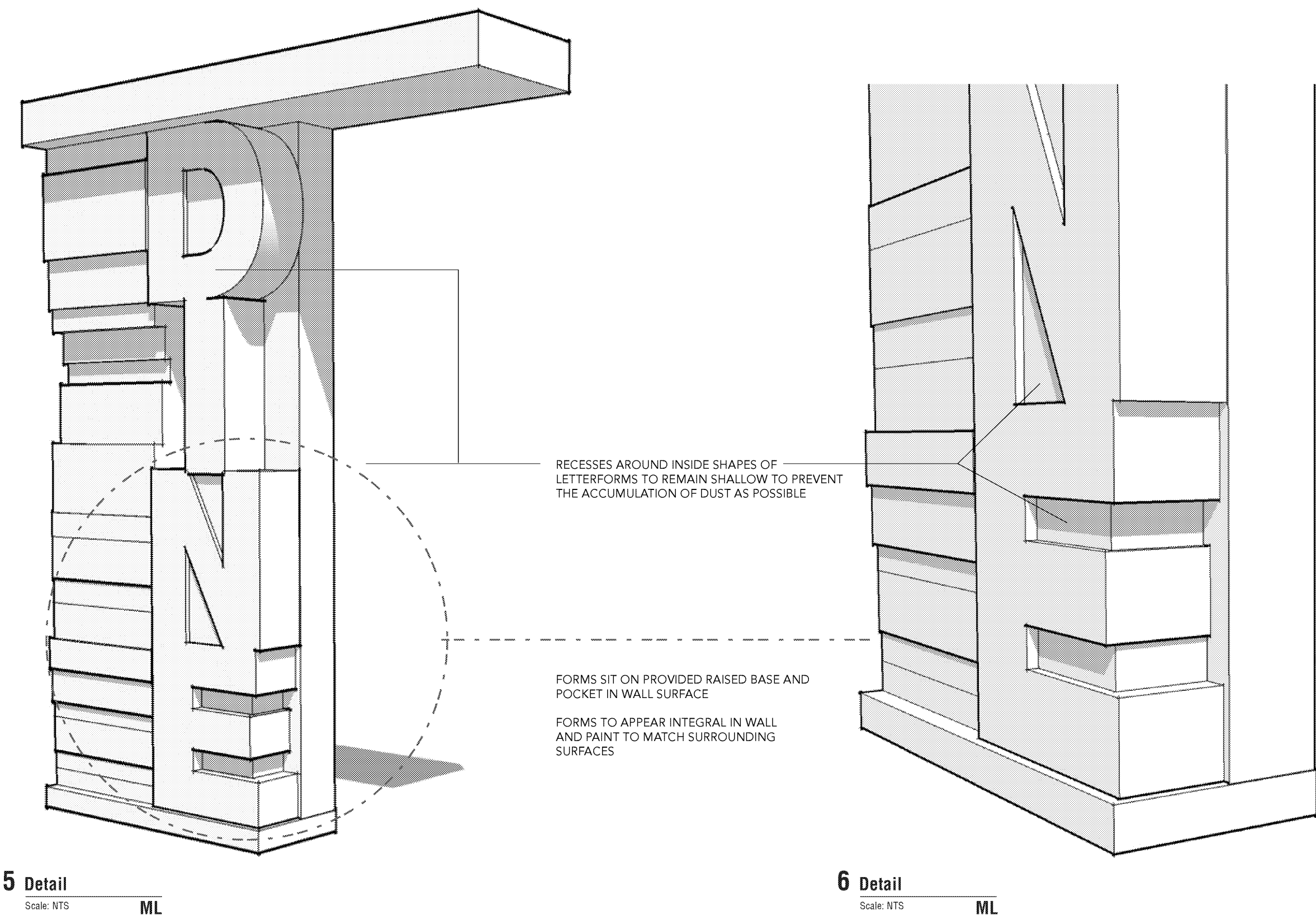
C

B

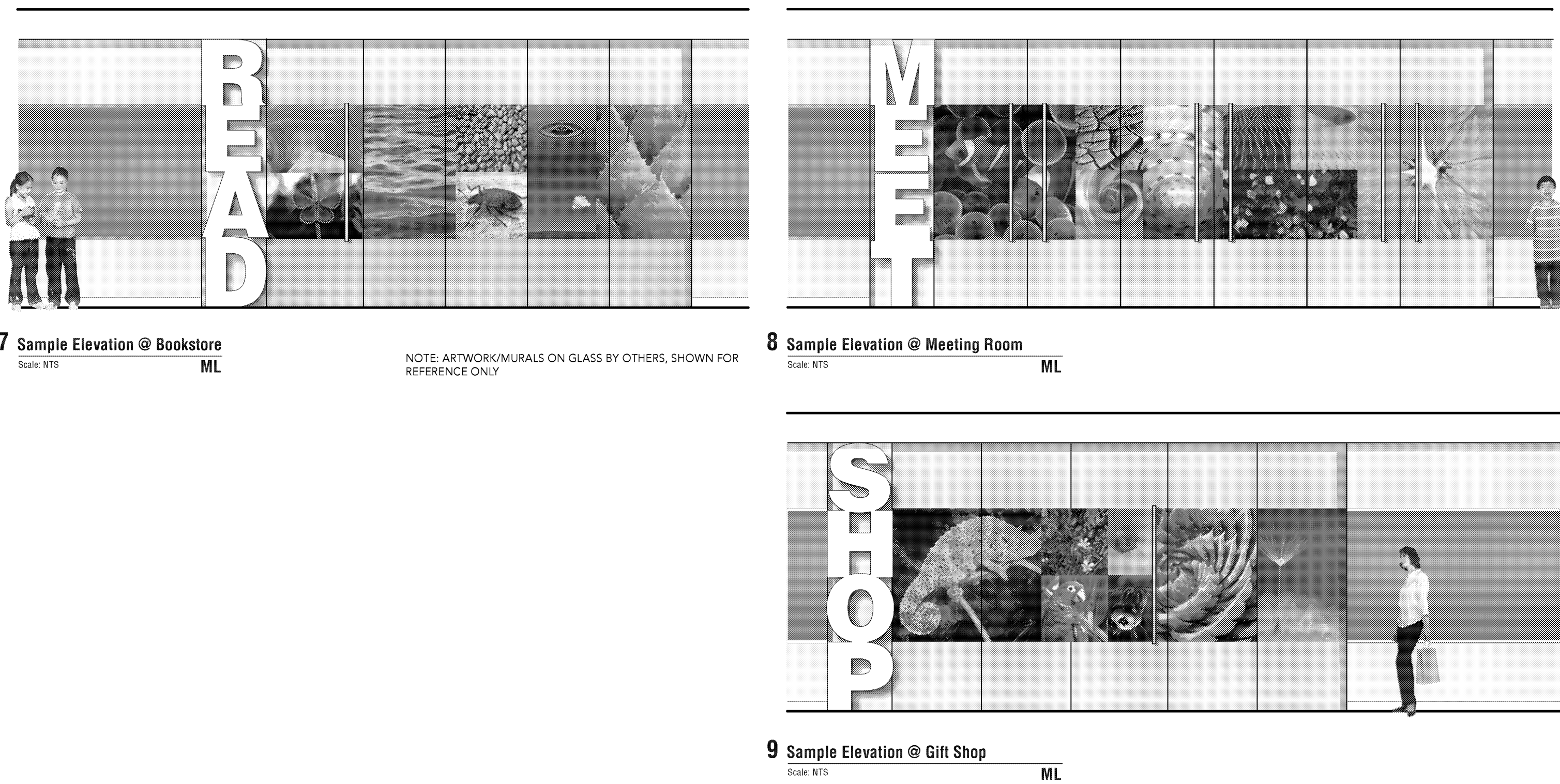
A



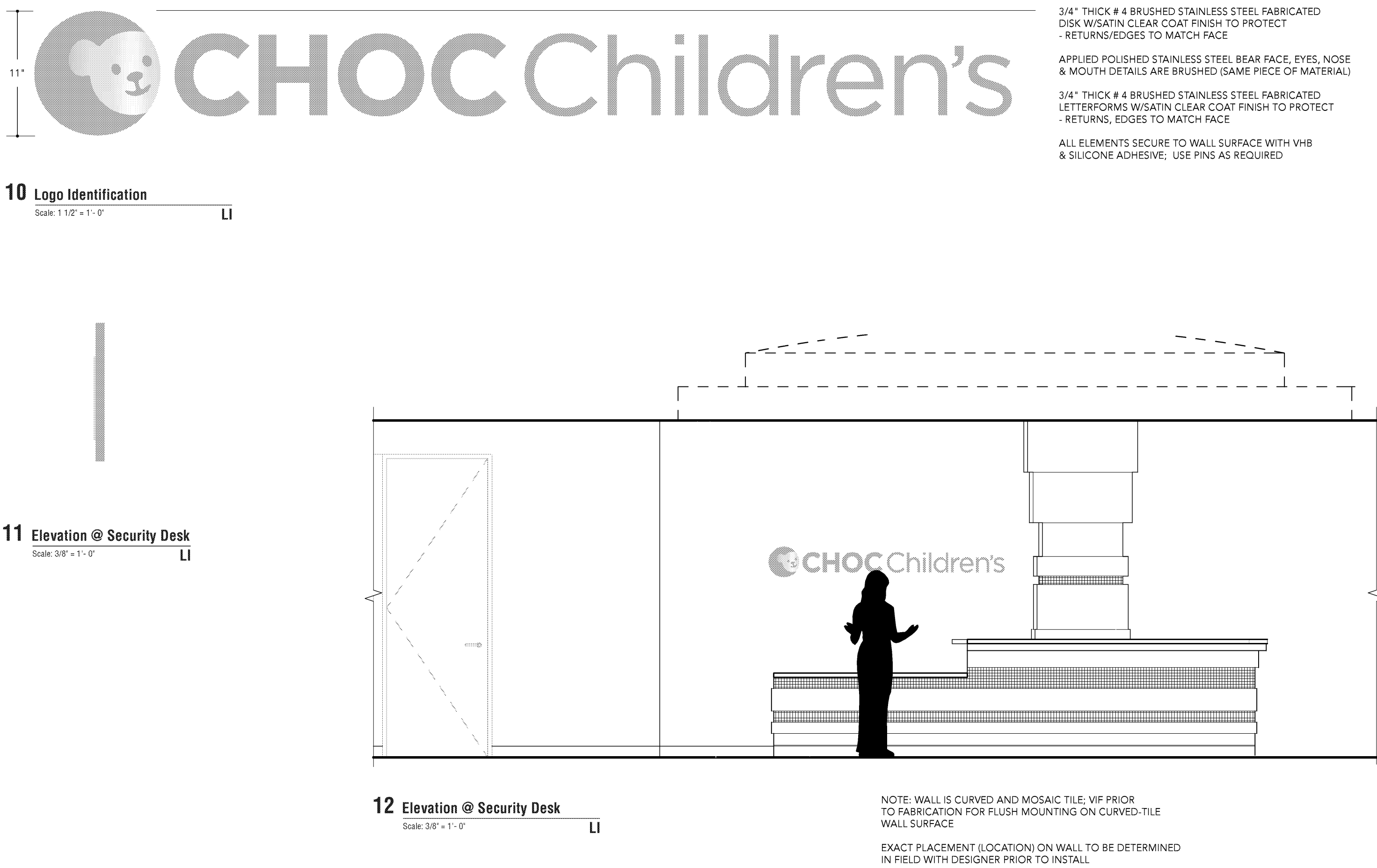
ML: Monolithic Letterforms



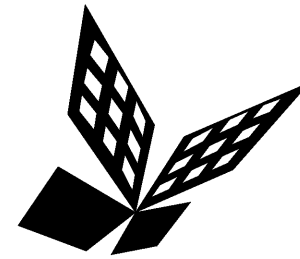
ML: Monolithic Letterforms



ML: Monolithic Letterforms



LI: Logo Identification



FKP Architects

ARCHITECT OF RECORD

*Architect of Record signature line only; this drawing was not prepared under the direct supervision of the Architect of Record. The direct responsibility for preparation of this sheet lies with its corresponding professional stamp and signature. The signature of the Architect of Record in general responsible change of the project is provided as required by Title 24, Part 1, Section 7-115 (a).

ARCHITECT - PAUL C. GLORIOD

CONSULTANT



REVISIONS

08/31/09 ISSUED FOR FGMP

APPROVAL

PROJECT NAME

CHILDREN'S HOSPITAL OF ORANGE COUNTY

455 S. Main St.
Orange, CA 92668-3874

TOWER II



PROJECT NUMBER

12011.00
Increment #7

OSHPD - PROJECT NUMBER
IL 072072-30

ISSUE

Issue for FGMP

DATE

08/31/2009

SCALE

AS NOTED

DRAWING TITLE

WAYFINDING GRAPHICS

DRAWING NUMBER

AGC15.0