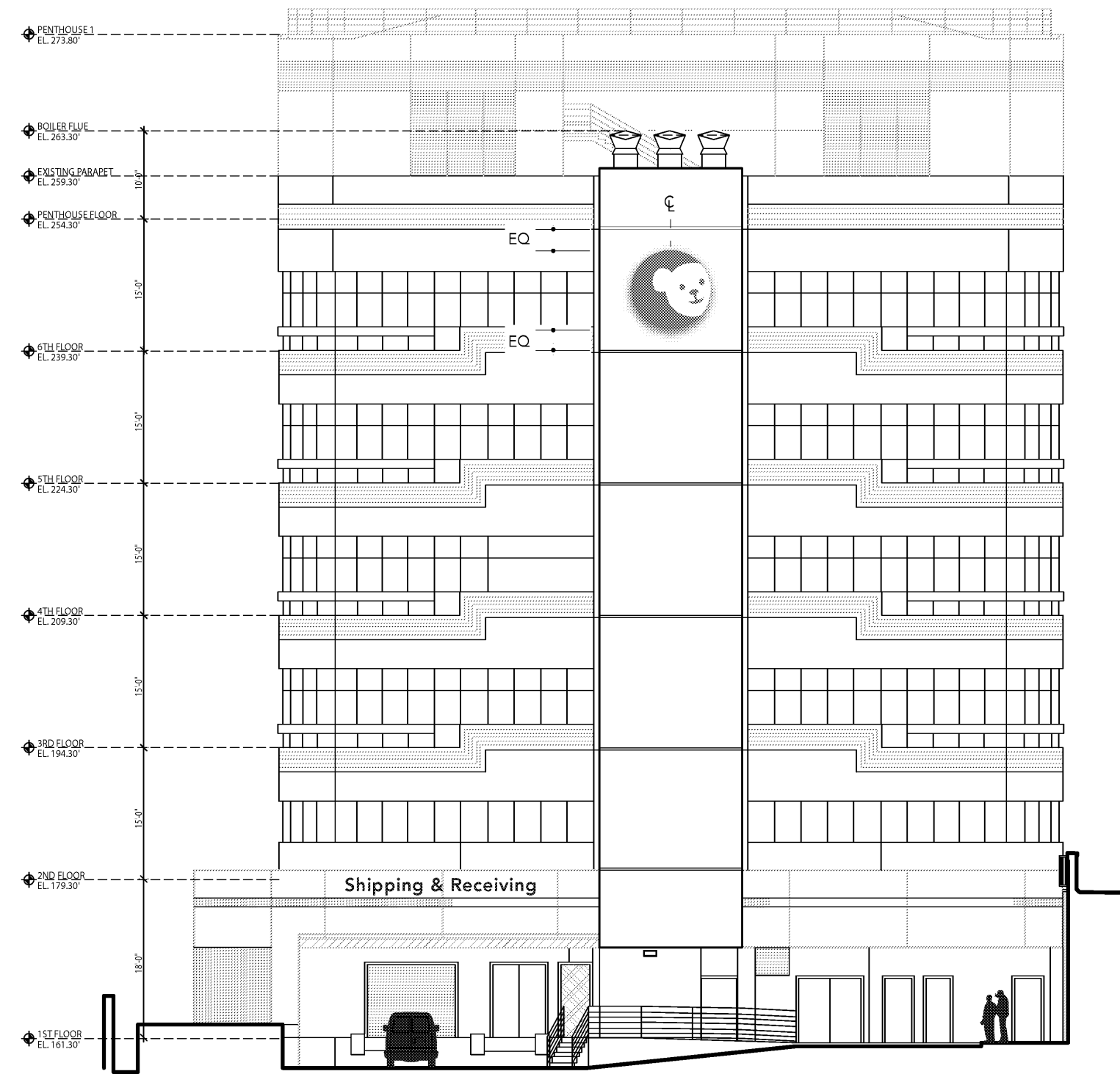


E

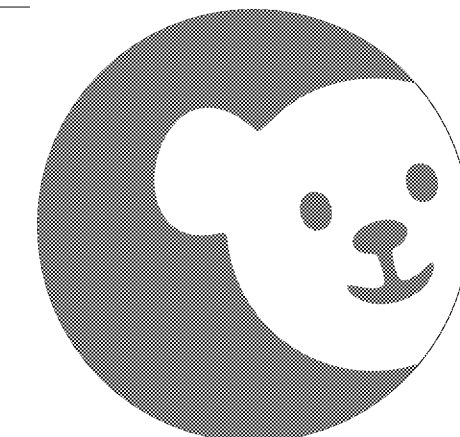
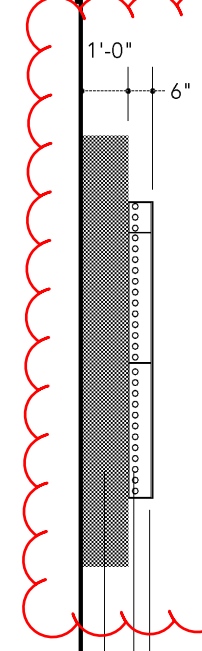
D



1 Logo Building Identification
Scale: 1/16" = 1'-0"
LBI

LBI: Logo Building Identification (Location 1)

RFI 5239 LBI-1 & 2 depth revised to 10" + 5 1/4"



3 Enlargement
Scale: 1/4" = 1'-0"
PBI

RFI 3374 - Sign LBI-1 fed from Circuit ILD-41
INTERNALLY ILLUMINATED FABRICATED ALUMINUM CABINET WITH WHITE ACRYLIC FACE AND APPLIED TRANSLUCENT VINYL "BEAR FACE"

"BEAR FACE" ILLUMINATES WHITE EVENLY WITH NO SHADOWS OR HOT SPOTS MOUTH, NOSE, AND EYES ILLUMINATE BLUE MATCHING 65% OF PMS 638

SLOAN LED GREAT WHITE 3 LED (OR APPROVED EQUAL) TO FOLLOW CONTOUR OF THE BEAR FACE TO EVENLY ILLUMINATE THE BLUE DISK FIELD

FABRICATED ALUMINUM BACKGROUND DISK PAINTS TO MATCH 65% OF PMS 638, MATTE

FABRICATOR TO PROVIDE COLOR SAMPLES FOR APPROVAL

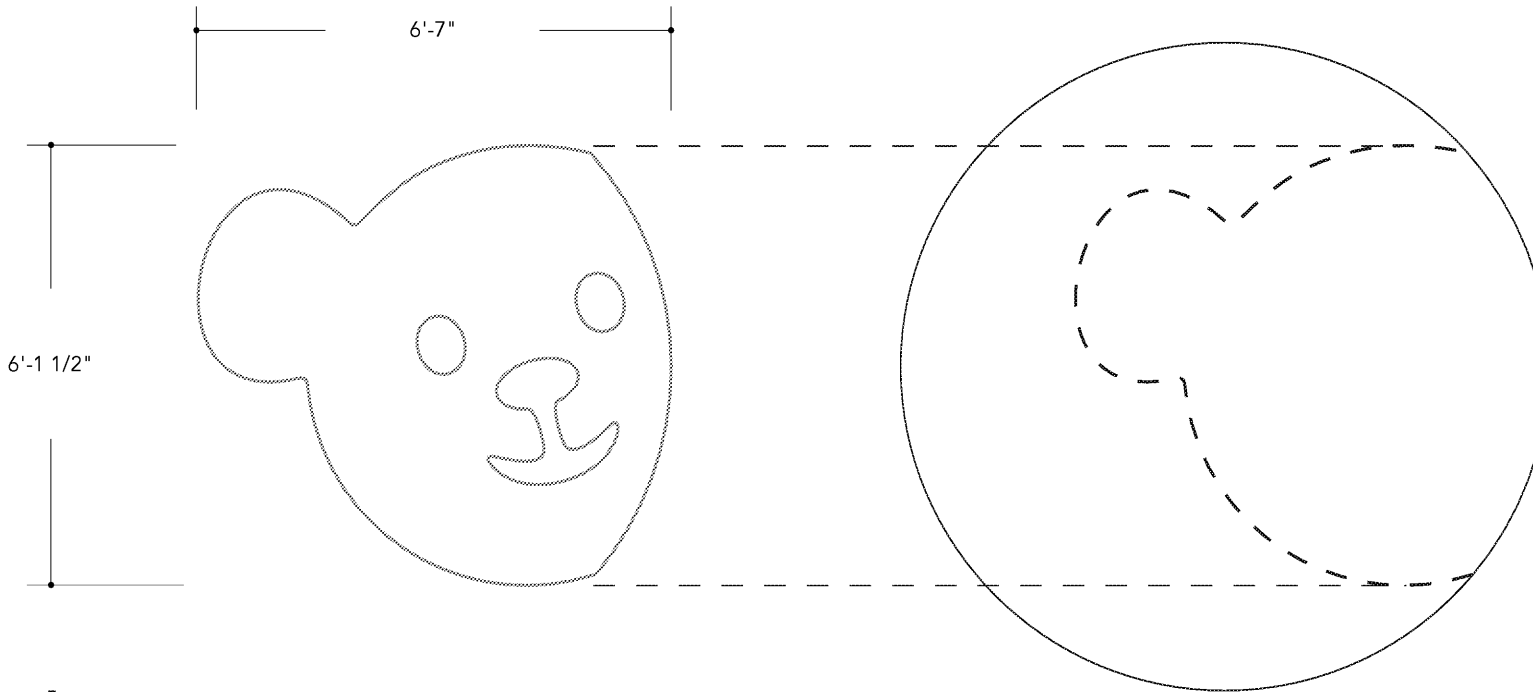
SIGN MOUNTS TO FACE OF BUILDING THRU WALL TO INTERNAL STRUCTURE, FOR BLOCKING AND ANCHORAGE, SEE STRUCTURAL

FABRICATOR TO PROVIDE DETAILED SHOP DRAWINGS STAMPED BY A LICENSED STRUCTURAL ENGINEER IN THE STATE OF CALIFORNIA DETAILING THE SIGN STRUCTURE, POWER REQUIREMENTS & APPROPRIATE ANCHORAGE

RE: ARCHITECTURE DRAWING A6.20

2 Side View
Scale: 1/8" = 1'-0"
LBI

LBI: Logo Building Identification (Location 1)



4 Front View
Scale: 3/8" = 1'-0"
LBI

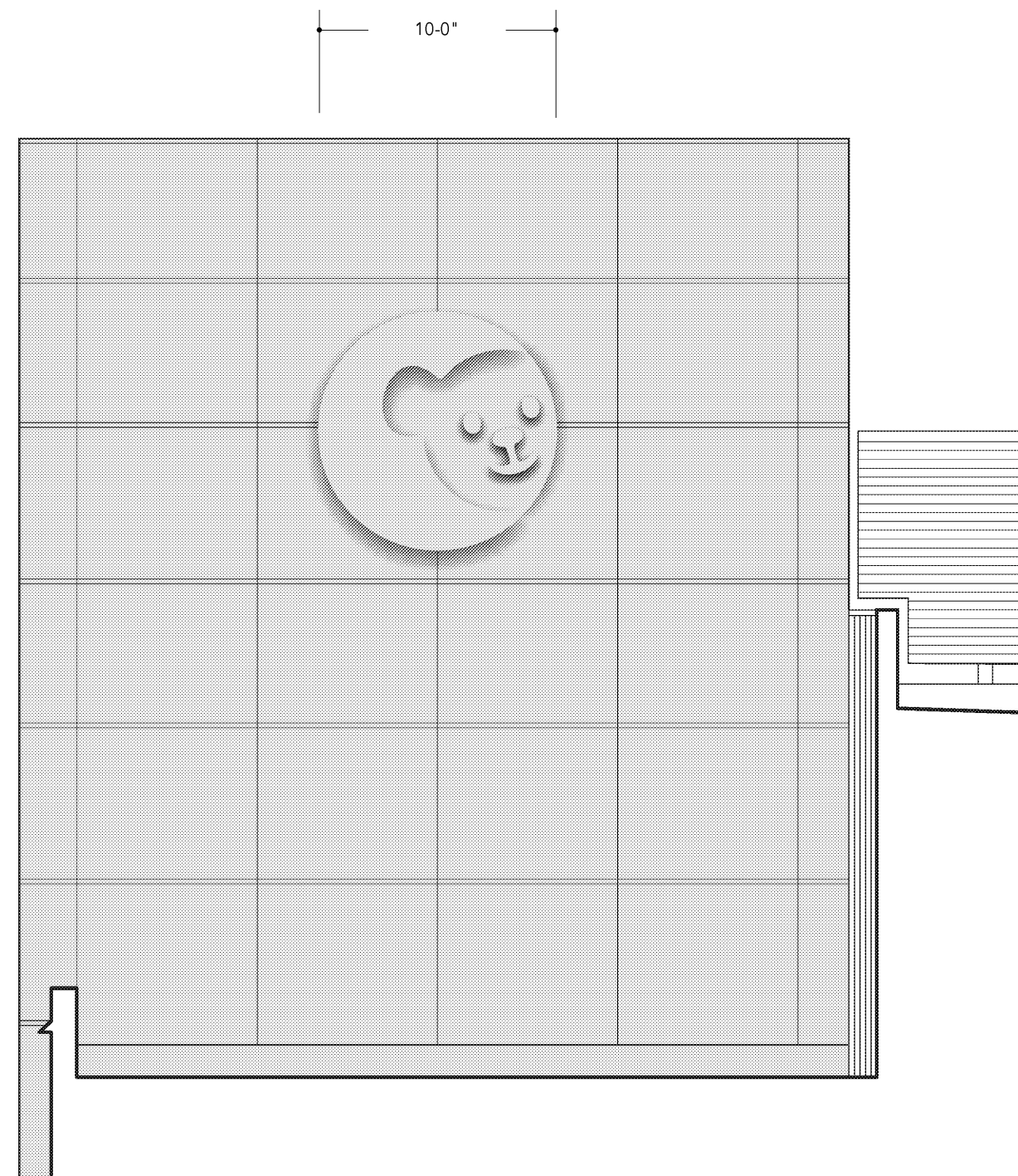
RFI 5130 Revised background color for LBI (location 1) and PBI (locations 1 & 2)

C

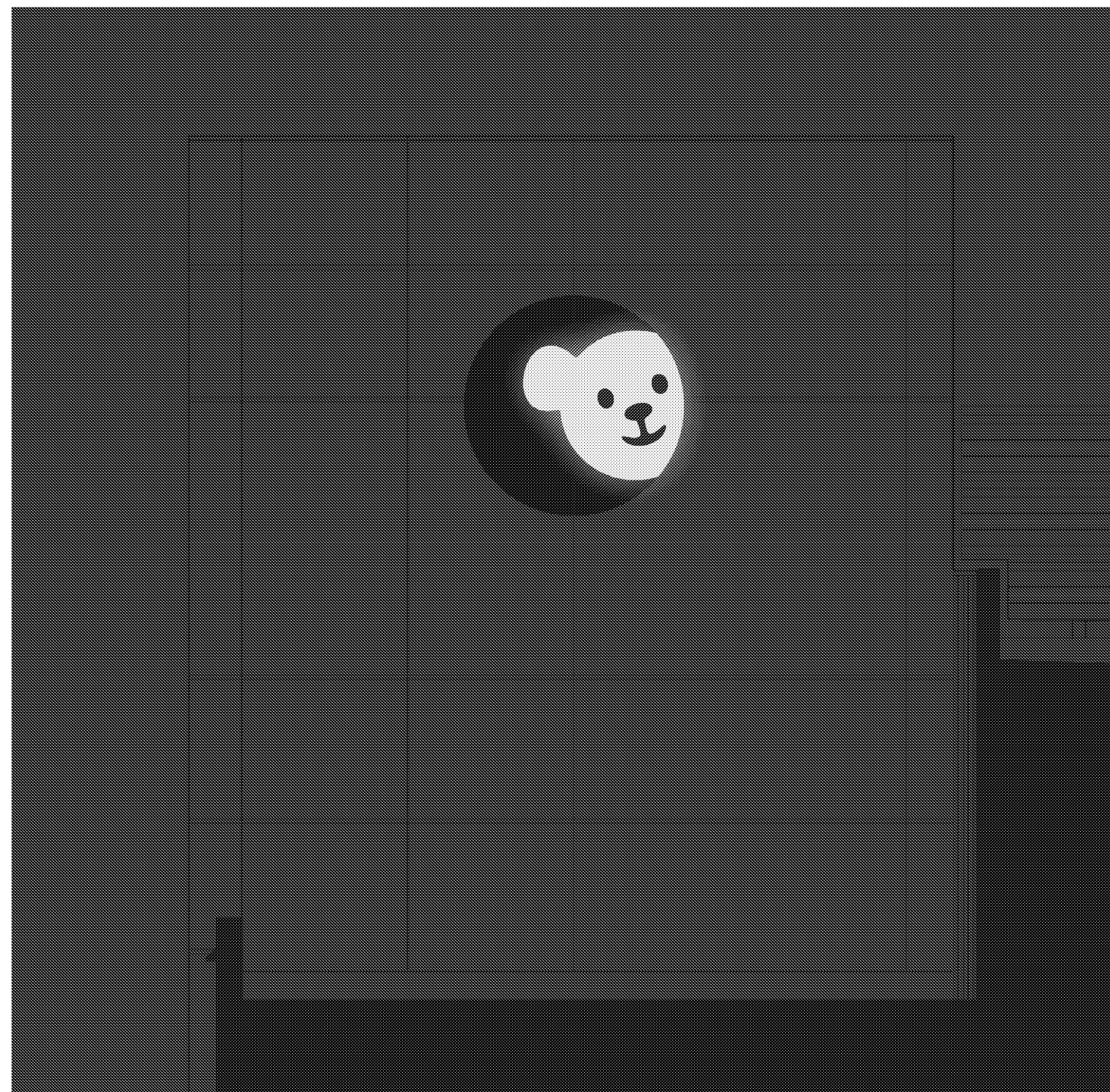
B

A

RFI 5824



5 South Elevation Building Identification: Day
Scale: 1/8" = 1'-0"
LBI

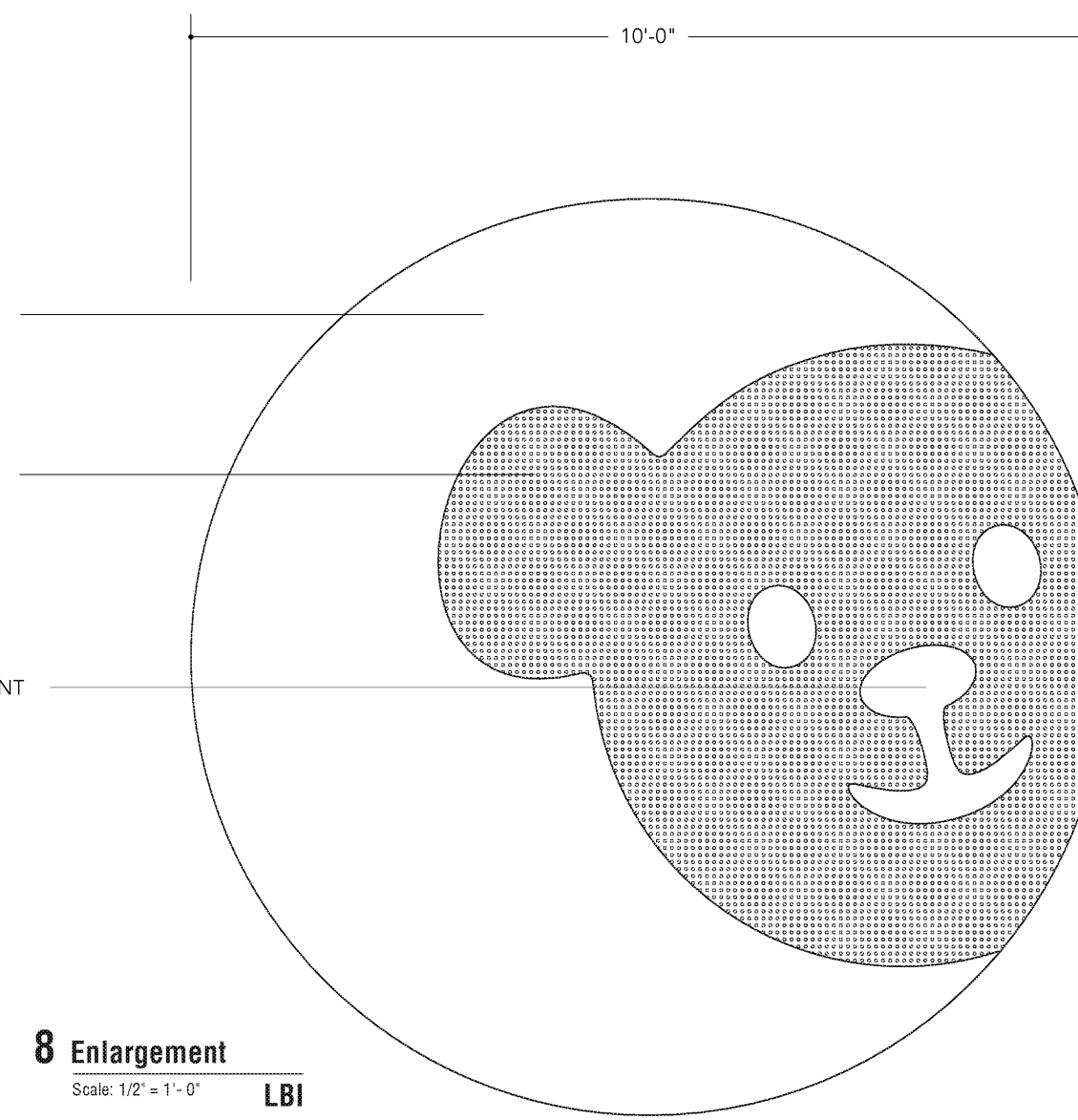
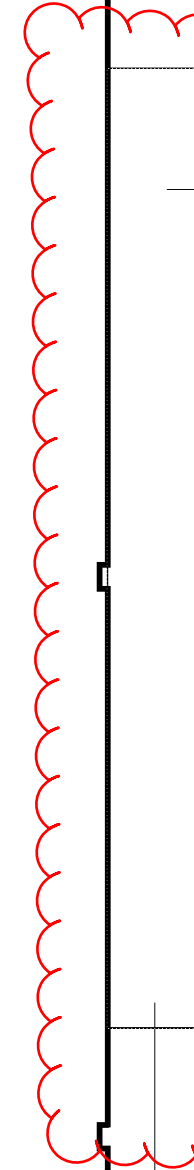


6 South Elevation Building Identification: Night
Scale: 1/8" = 1'-0"
LBI

LBI: Logo Building Identification (Location 2)

RFI 5256-2

RFI 5239 LBI-1 & 2 depth revised to 10" + 5 1/4"



8 Enlargement
Scale: 1/2" = 1'-0"
LBI

RFI 3374 - Sign LBI-1 fed from Circuit ILD-41

INTERNALLY ILLUMINATED FABRICATED ALUMINUM CABINET - FACE TO BE PERFORATED WITH WHITE ACRYLIC BACKER TO ILLUMINATE WHITE AT NIGHT
MOUTH/ NOSE, AND EYES TO BE 1/2" THICK ALUMINUM (PAINT TO MATCH WALL SURFACE) AND ARE APPLIED TO PERFORATED FACE

SLOAN LED GREAT WHITE 3 LED (OR APPROVED EQUAL) TO FOLLOW CONTOUR OF THE BEAR FACE TO EVENLY ILLUMINATE THE BACKGROUND DISK

FABRICATED ALUMINUM BACKGROUND DISK PAINTS TO MATCH WALL SURFACE (NON ILLUMINATED)
FABRICATOR TO PROVIDE COLOR SAMPLES FOR APPROVAL

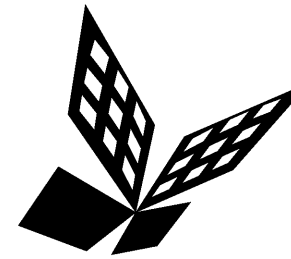
SIGN MOUNTS TO FACE OF BUILDING THRU WALL TO INTERNAL STRUCTURE, FOR BLOCKING AND ANCHORAGE, SEE STRUCTURAL

FABRICATOR TO PROVIDE DETAILED SHOP DRAWINGS STAMPED BY A LICENSED STRUCTURAL ENGINEER IN THE STATE OF CALIFORNIA DETAILING THE SIGN STRUCTURE, POWER REQUIREMENTS & APPROPRIATE ANCHORAGE

7 Side View
Scale: 1/2" = 1'-0"
LBI

LBI: Logo Building Identification (Location 2)

RFI 5256-2



FKP Architects

ARCHITECT OF RECORD

*Architect of Record signature line only; this drawing was not prepared under the direct supervision of the Architect of Record. The direct responsibility for preparation of this sheet lies with its corresponding professional stamp and signature. The signature of the Architect of Record in general responsible change of the project is provided as required by Title 24, Part 1, Section 7-115 (a).

ARCHITECT - PAUL C. GLORIOD

CONSULTANT



REVISIONS

10/15/10 ASI NO. 34

APPROVAL

PROJECT NAME

CHILDREN'S HOSPITAL OF ORANGE COUNTY

455 S. Main St.
Orange, CA 92868-3874

TOWER II



PROJECT NUMBER

12011.00
Increment #7

OSHPD - PROJECT NUMBER
IL 072072-30

ISSUE

Issue for FGMP

DATE

08/31/2009

SCALE

AS NOTED

DRAWING TITLE

EXTERIOR GRAPHICS

DRAWING NUMBER

AGC18.1