

FKP Architects

ARCHITECT OF RECORD

*Architect of Record signature line only; this drawing was not prepared under the direct supervision of the Architect of Record. The direct responsibility for preparation of this sheet lies with its corresponding professional stamp and signature. The signature of the Architect of Record in general responsible change of the project is provided as required by Title 24, Part 1, Section 7-115 (a).

ARCHITECT - PAUL C. GLORIOT

CONSULTANT



REVISIONS

△	08/31/09	ISSUED FOR FGMP
△	08/31/09	ISSUED FOR FGMP
△	09/04/12	ASI #253

APPROVAL

PROJECT NAME

CHILDREN'S HOSPITAL
OF ORANGE COUNTY

455 S. Main St.
Orange, CA 92868-3874

TOWER II



PROJECT NUMBER

12011.00
Increment #7

OSHPD - PROJECT NUMBER
IL 072072-30

ISSUE

Issue for FGMP

DATE

08/31/2009

SCALE

AS NOTED

DRAWING TITLE

GARAGE GRAPHICS

DRAWING NUMBER

AGC28.0

E

D

C

B

A



1 Overhead Directional
Scale: 3/4" = 1'-0"

HEAVY GAUGE STAINLESS STEEL CABLE'S
THROUGH HOLES IN BACKER PANEL

1/8" ALUMINUM PANEL PAINTS
MATTE BLACK WITH APPLIED REFLECTIVE
VINYL COPY

1/8" ALUMINUM UNDERSIZED BACKER;
PAINTS PMS COOL GRAY 11

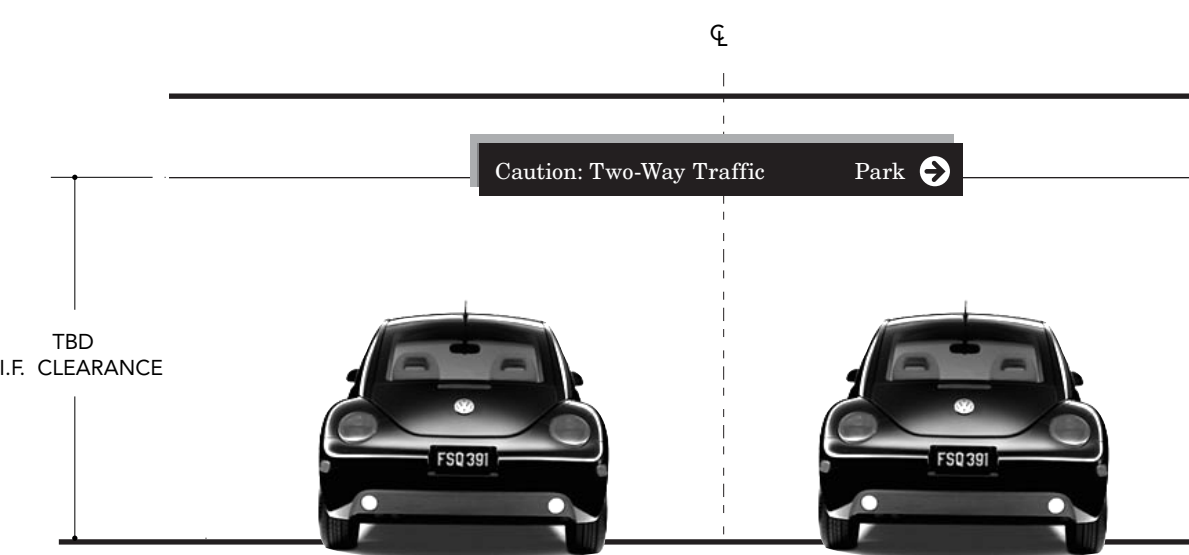
SIGN SECURED TO CONCRETE COLUMN
SURFACE WITH VHB AND SILICONE
ADHESIVE AS REQUIRED

3 Beam Mount Detail
Scale: 3" = 1'-0"

4 Cable Mount Detail
Scale: 3" = 1'-0"

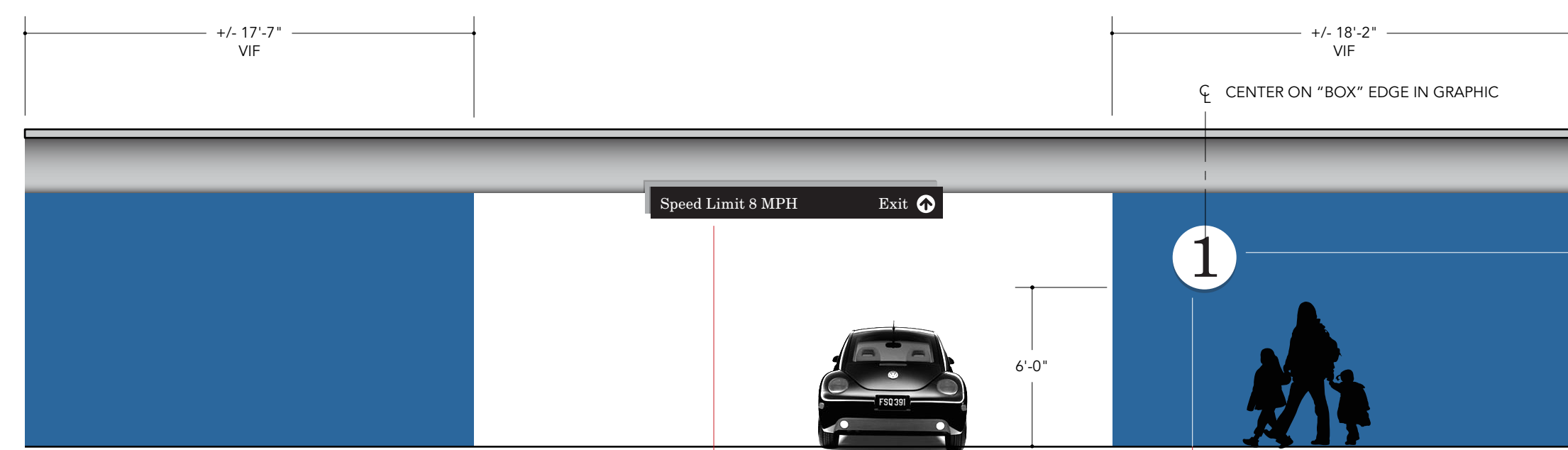


2 Additional Layout Samples
Scale: 3/4" = 1'-0"



5 Elevation: Overhead Directional
Scale: 3/4" = 1'-0"

OD: Overhead Directional



6 Location Elevation: Level 1 Typical Interior Wall
Scale: 3/16" = 1'-0"

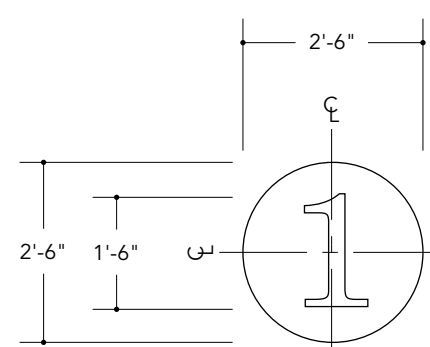
2" THICK FABRICATED ALUMINUM PAN
PAINTS MATTE WHITE WITH APPLIED
REFLECTIVE BLACK VINYL NUMBER

SIGN SECURES TO WALL SURFACE WITH MOUNTING
CLEAT AND SET SCREWS PAINTED TO MATCH

FOUR COLOR VINYL GRAPHIC APPLIED TO
WALL SURFACE. PREDOMINANT LEVEL COLOR TO
MATCH PAINT COLORS PER LEVEL

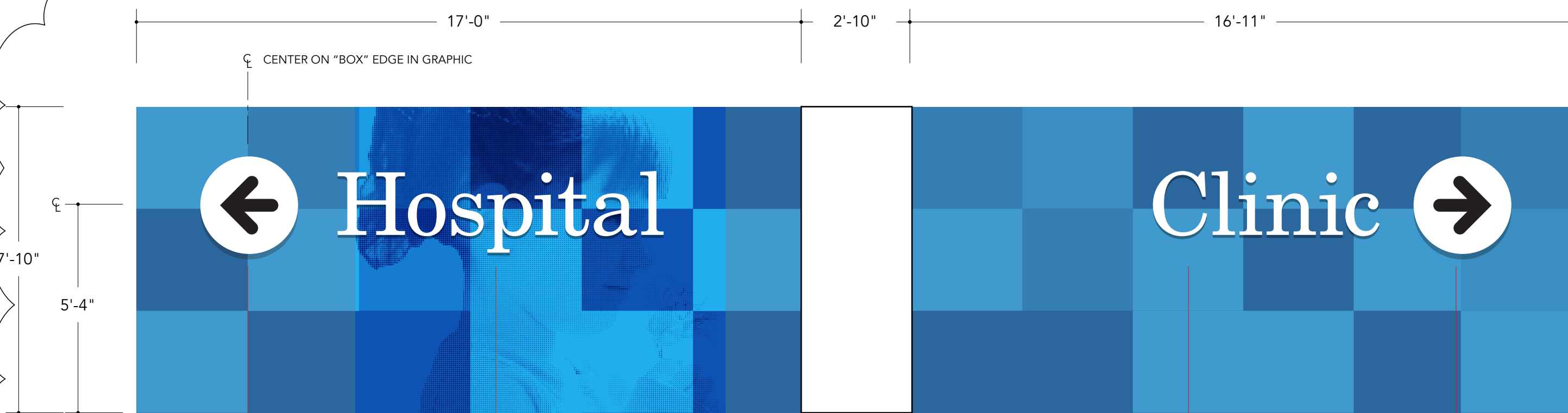
FINAL ART TO BE PROVIDED BY GRAPHIC DESIGNER

HALFTONE LEVEL ARTWORK TO CORRESPOND WITH
THE NUMBER OF CHILDREN ON EACH LEVEL



7 Elevation: Garage Level Disk
Scale: 3/8" = 1'-0"

WG: Wall Graphic, GLD: Garage Level Disk



8 Location Elevation: Level 1 Interior South Wall
Scale: 3/8" = 1'-0"

3/8" THICK ALUMINUM LETTERFORMS PAINT MATTE WHITE &
SECURE TO WALL SURFACE WITH VHB & SILICONE ADHESIVE AS REQUIRED

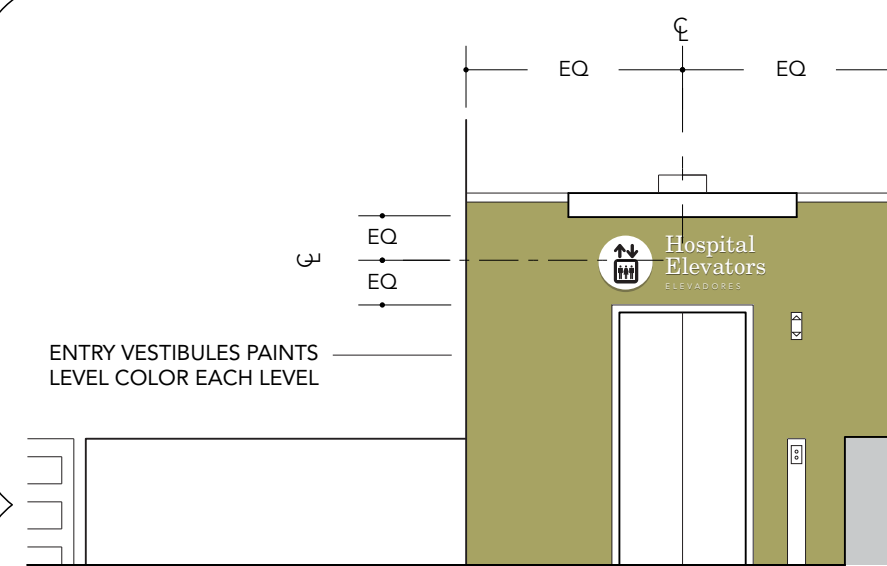
2" THICK FABRICATED ALUMINUM PAN PAINTS MATTE WHITE WITH
APPLIED REFLECTIVE BLACK VINYL NUMBER

SIGN SECURES TO WALL SURFACE WITH MOUNTING
CLEAT AND SET SCREWS PAINTED TO MATCH

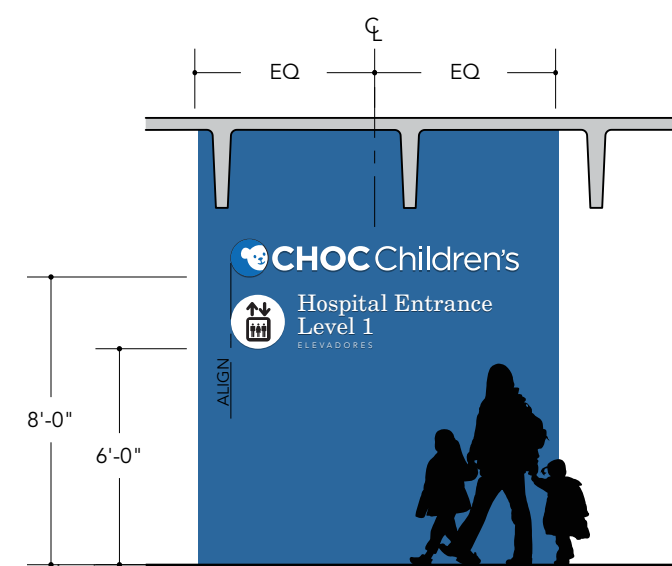


9 Elevation: Garage Level Disk & Garage Letters
Scale: 3/8" = 1'-0"

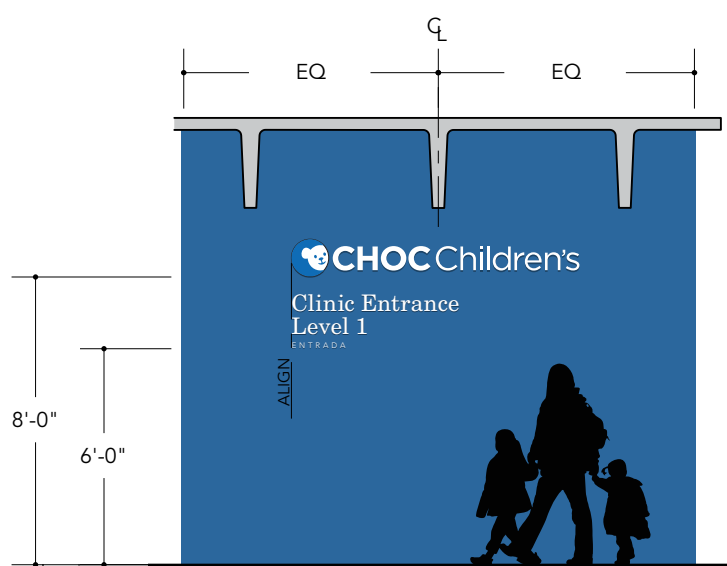
WG: Wall Graphic, GL: Garage Letters, GLD: Garage Level Disk



10 Level 4 Hospital Vestibule West Elevation
Scale: 3/16" = 1'-0"



11 Level 1 Hospital Vestibule South Elevation
Scale: 3/16" = 1'-0"



12 Level 1 Clinic Vestibule East Elevation
Scale: 3/16" = 1'-0"



13 Elevation: CHOC Logo
Scale: 3/4" = 1'-0"

3/8" THICK ALUMINUM LETTERFORMS PAINT MATTE WHITE &
SECURE TO WALL SURFACE WITH VHB & SILICONE ADHESIVE
AS REQUIRED



14 Elevation: Hospital Elevator Letters
Scale: 3/4" = 1'-0"



15 Elevation: Clinic Elevator Letters
Scale: 3/4" = 1'-0"

EL: Elevator Letters, CL: CHOC Logo