

FKP Architects

ARCHITECT OF RECORD

*Architect of Record signature line only; this drawing was not prepared under the direct supervision of the Architect of Record. The direct responsibility for preparation of this sheet lies with its corresponding professional stamp and signature. The signature of the Architect of Record in general responsible change of the project is provided as required by Title 24, Section 7-115 (a).

ARCHITECT - PAUL C. GLORIO

CONSULTANT



REVISIONS

11/11/11 ASI NO. 130

APPROVAL

PROJECT NAME

CHILDREN'S HOSPITAL
OF ORANGE COUNTY

455 S. Main St.
Orange, CA 92668-3874

TOWER II



PROJECT NUMBER

12011.00
Increment #7

OSHPD - PROJECT NUMBER
IL 072072-30

ISSUE

DATE

9/1/2011

SCALE

AS NOTED

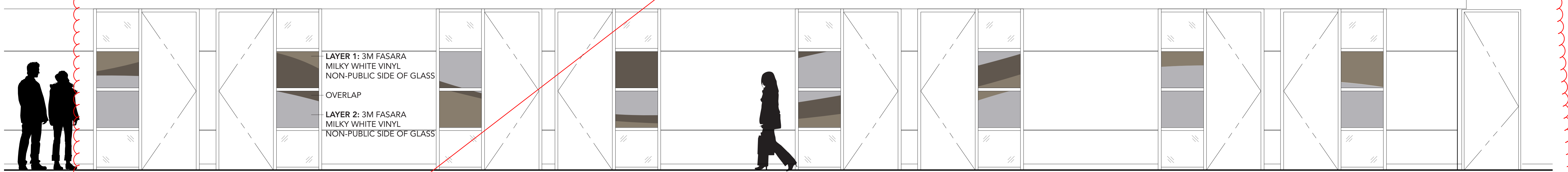
DRAWING TITLE

South Tower Art
Glass Program
Level 1

DRAWING NUMBER

AGCG1.0

E

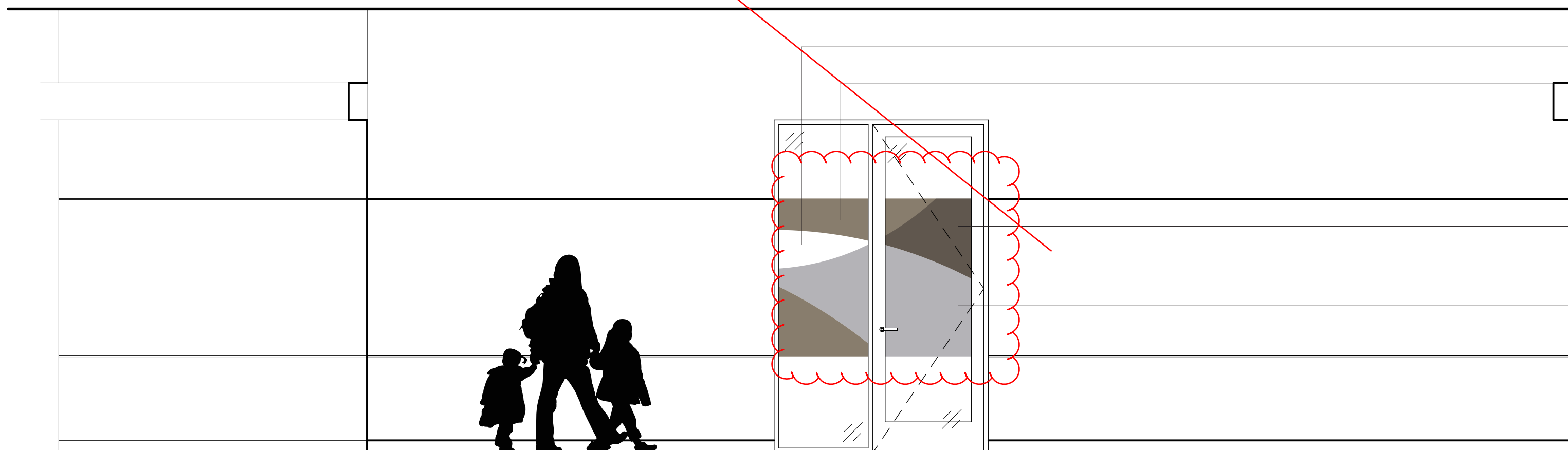


E5 Level 1 SW Corridor: E5/IA8.1
SCALE: 3/8" = 1'-0"

RFI 4879
Changes to
glass graphics
format

NOTE: SAMPLE REQUIRED FOR SUBMITTAL TO BE REVIEWED BY FORMATION FOR FINAL APPROVAL

D

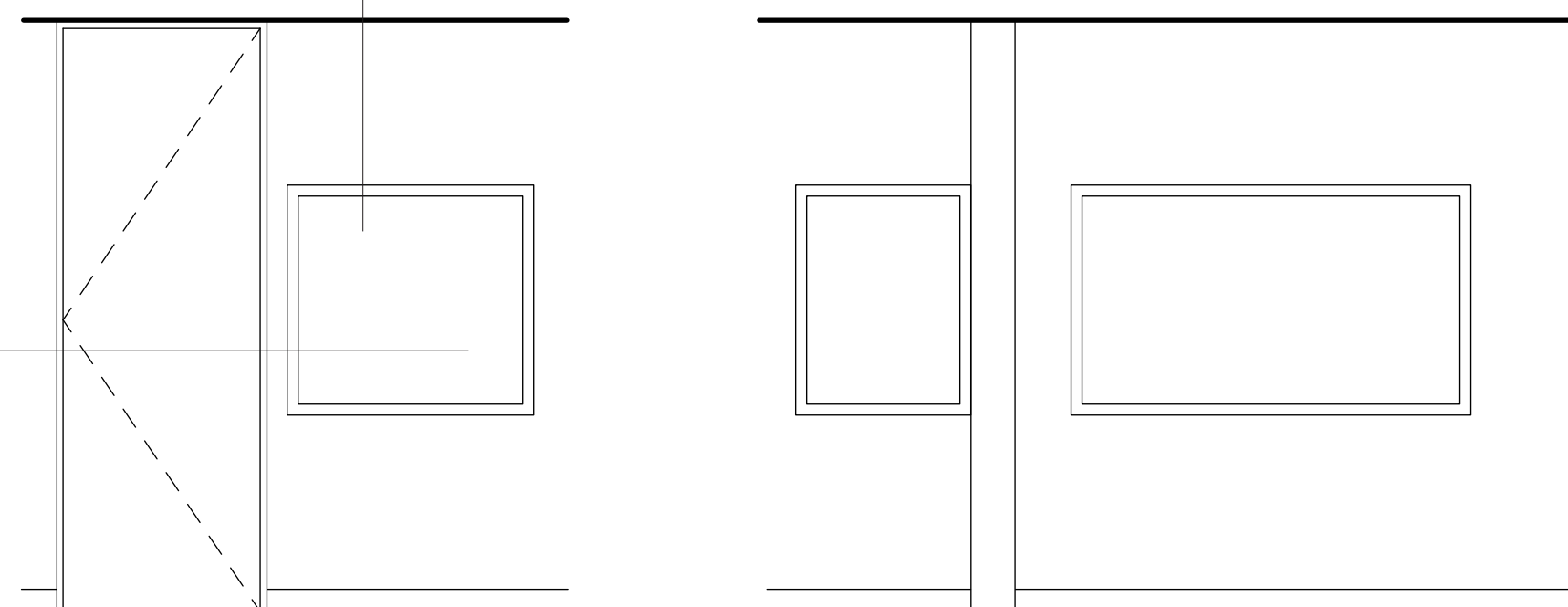


C4 Level 1 Lobby 1: C4/IA 8.1
SCALE: 3/8" = 1'-0"

OPEN
3LAYER 1: 3M FASARA
MILKY WHITE VINYL
NON-PUBLIC SIDE OF GLASS

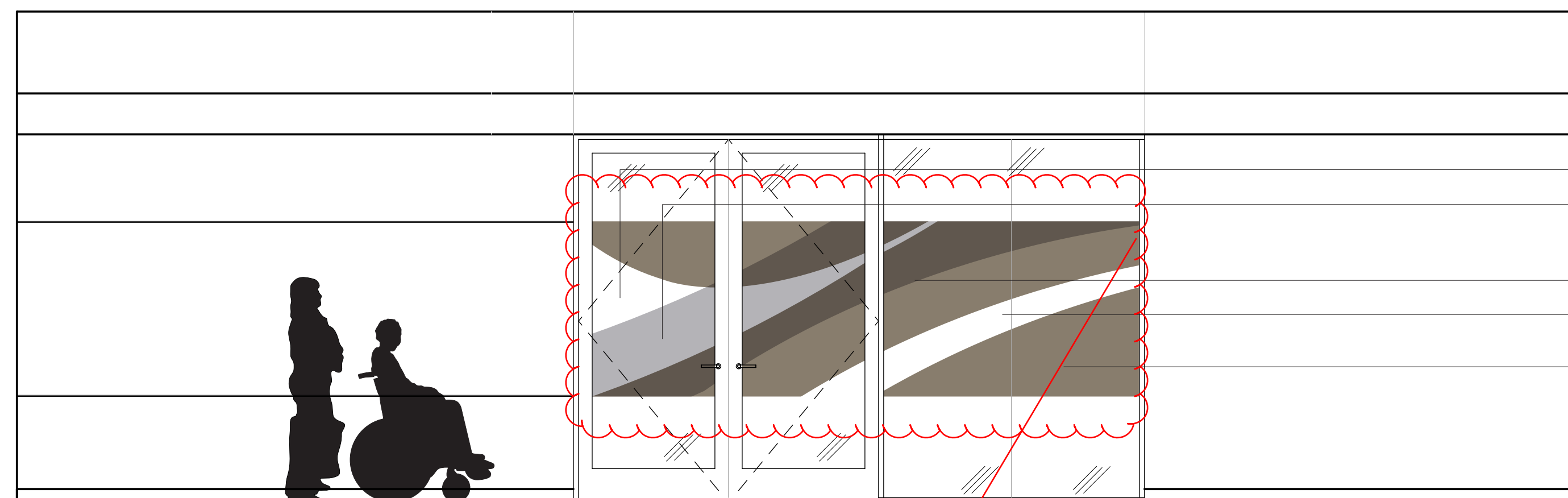
OVERLAP

LAYER 2: 3M FASARA
MILKY WHITE VINYL
NON-PUBLIC SIDE OF GLASS



F1 Level 1 Security Office: 1.070.54
SCALE: 3/8" = 1'-0"

C



B3 Level 1 Waiting 1: B3/IA 8.2
SCALE: 3/8" = 1'-0"

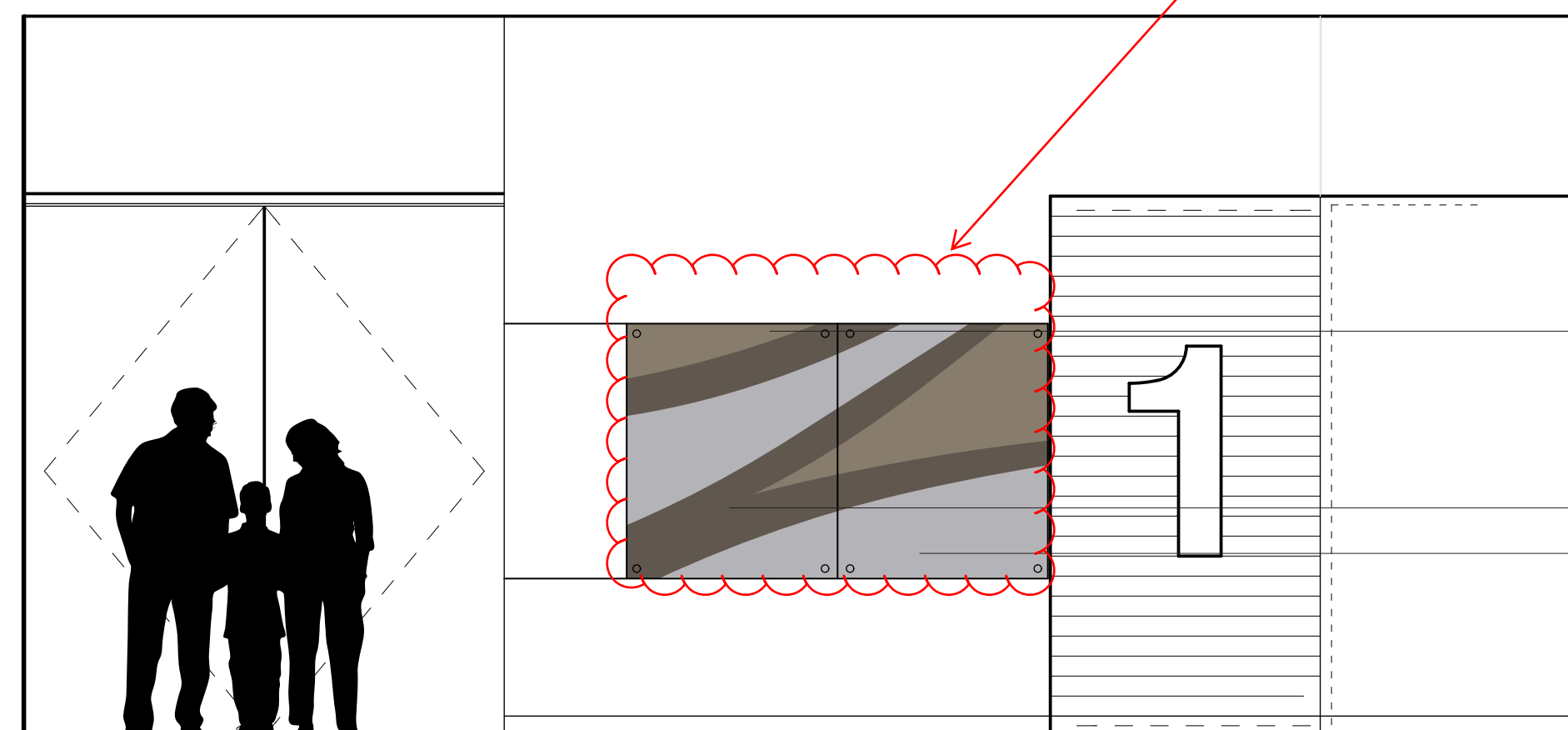
OPEN
LAYER 1: 3M FASARA
MILKY WHITE VINYL
NON-PUBLIC SIDE OF GLASS

OVERLAP

OPEN

LAYER 2: 3M FASARA
MILKY WHITE VINYL
NON-PUBLIC SIDE OF GLASS

B



A5 Level 1 Elevator Lobby: A5/IA 8.2
SCALE: 3/8" = 1'-0"

LAYER 1: 3M FASARA
MILKY WHITE VINYL
NON-PUBLIC SIDE OF GLASS

OVERLAP

LAYER 2: 3M FASARA
MILKY WHITE VINYL
NON-PUBLIC SIDE OF GLASS

A

