

FKP Architects

ARCHITECT OF RECORD

*Architect of Record signature line only; this drawing was not prepared under the direct supervision of the Architect of Record. The direct responsibility for preparation of this sheet lies with its corresponding professional stamp and signature. The signature of the Architect of Record in general responsible change of the project is provided as required by Title 24, Section 7-115 (a).

ARCHITECT - PAUL C. GLORIOT

CONSULTANT



REVISIONS

11/11/11 ASI NO. 130

APPROVAL

PROJECT NAME

CHILDREN'S HOSPITAL
OF ORANGE COUNTY

455 S. Main St.
Orange, CA 92668-3874

TOWER II



PROJECT NUMBER

12011.00
Increment #7

OSHPD - PROJECT NUMBER
IL 072072-30

ISSUE

DATE

9/1/2011

SCALE

AS NOTED

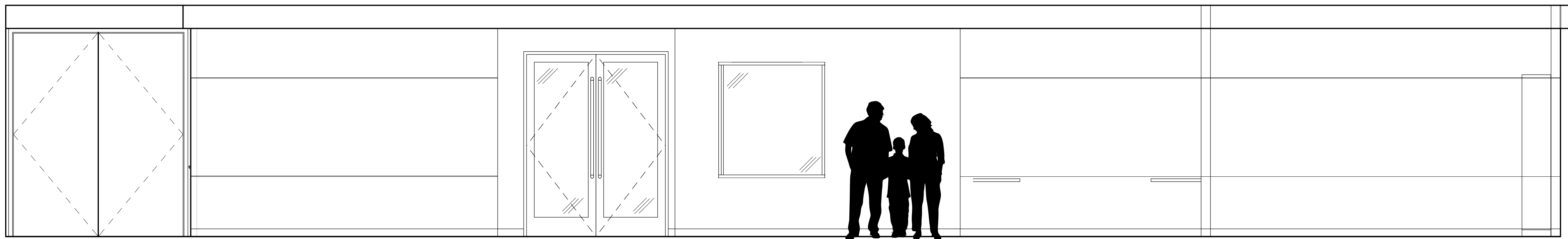
DRAWING TITLE

South Tower Art
Glass Program
Level 2

DRAWING NUMBER

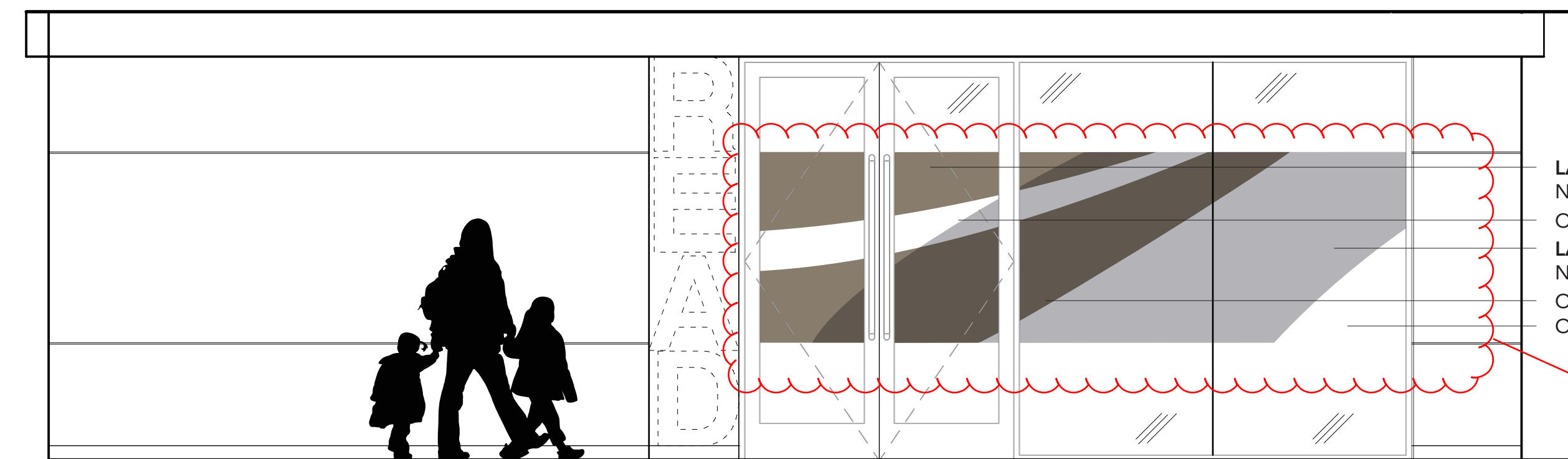
AGCG2.0

Formation recommends leaving Chapel glass without a graphic to allow view of art glass beyond.

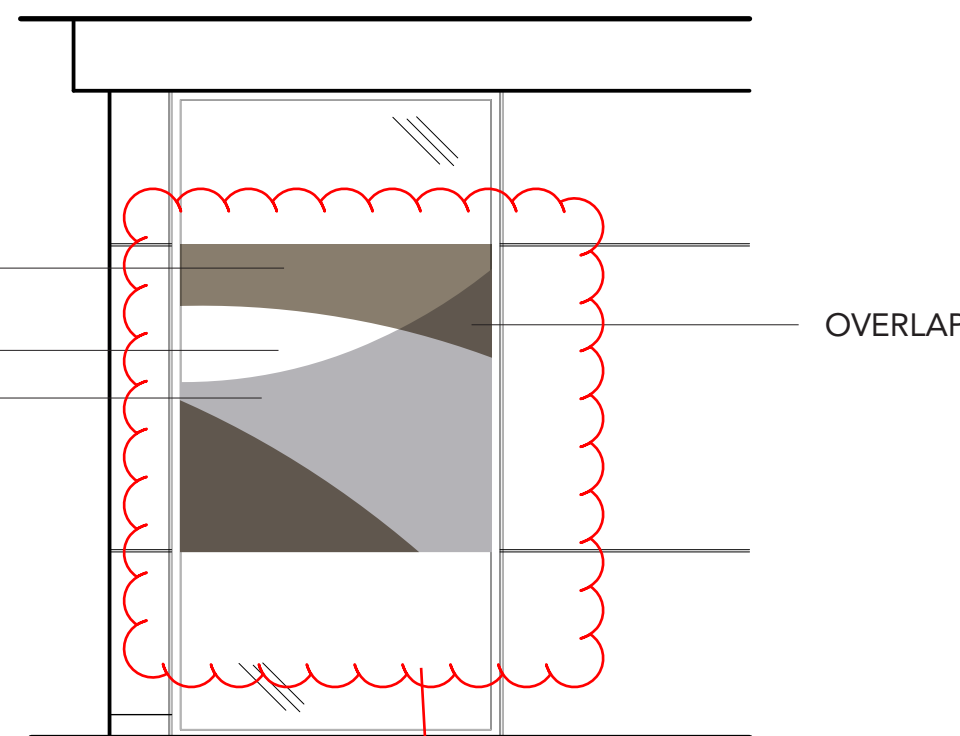


A6 Level 2 SW Corridor Meditation: A6/IA 8.6
SCALE: 3/8" = 1'-0"

NOTE: SAMPLE REQUIRED FOR SUBMITTAL TO BE REVIEWED BY FORMATION FOR FINAL APPROVAL

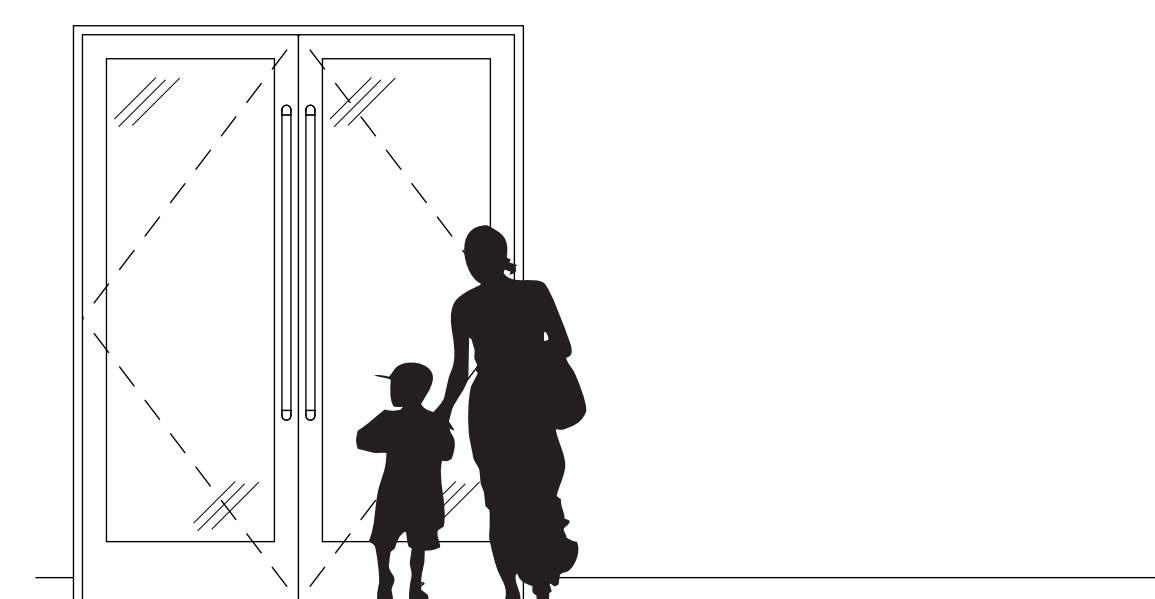


B6 Level 2 Family Services: B6/IA 8.4
SCALE: 3/8" = 1'-0"

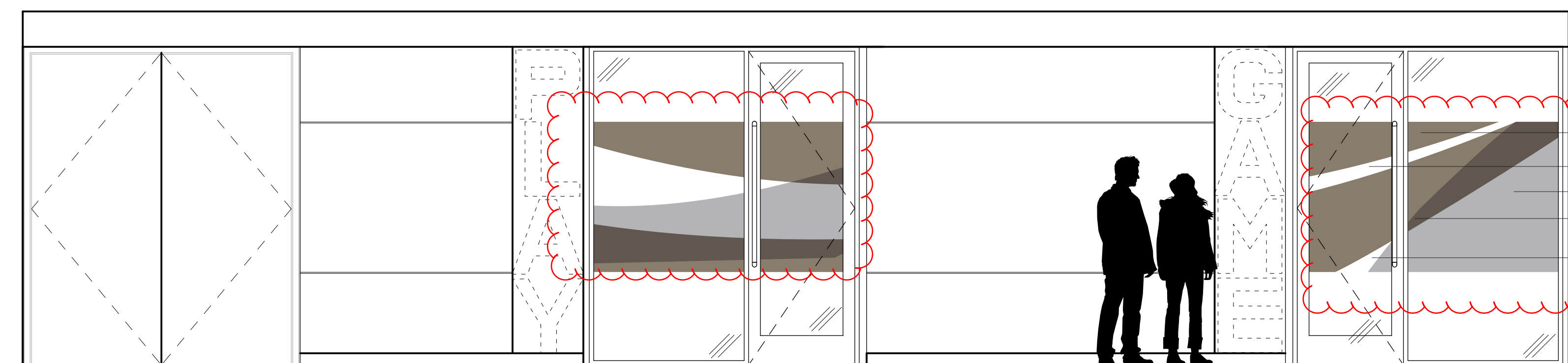


B7 Scheduled Opening 2.012.00Ac
SCALE: 3/8" = 1'-0"

Formation recommends leaving Vestibule door
glass without a graphic to allow view of donor feature beyond.



F1 Level 2 Vestibule: 2.160 (Entry From Parking Garage)
SCALE: 3/8" = 1'-0"



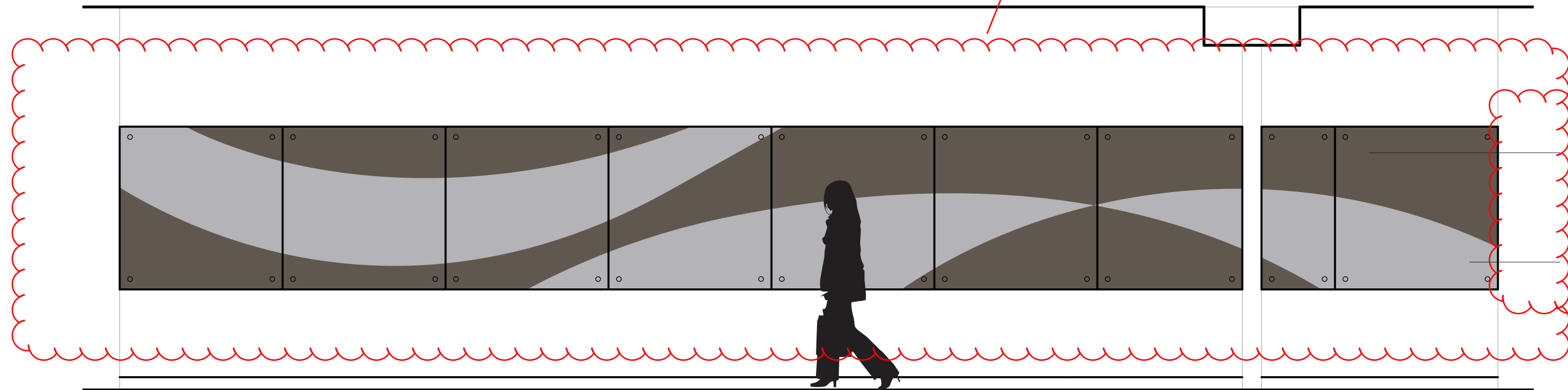
C4 Level 2 Teen Corridor: C4/IA 8.6
SCALE: 3/8" = 1'-0"

LAYER 1: 3M FASARA MILKY WHITE VINYL NON-PUBLIC SIDE OF GLASS
OPEN
LAYER 2: 3M FASARA MILKY WHITE VINYL NON-PUBLIC SIDE OF GLASS
OVERLAP
OPEN

RFI 4879
Changes made to glass
covering see architectural
notes

RFI 5845

LAYER 1: 3M FASARA
MILKY WHITE VINYL
NON-PUBLIC SIDE OF GLASS (OVERLAPPING)
LAYER 2: 3M FASARA
MILKY WHITE VINYL
NON-PUBLIC SIDE OF GLASS



D3 Level 2 Lobby 1: D3/IA 8.3
SCALE: 3/8" = 1'-0"

