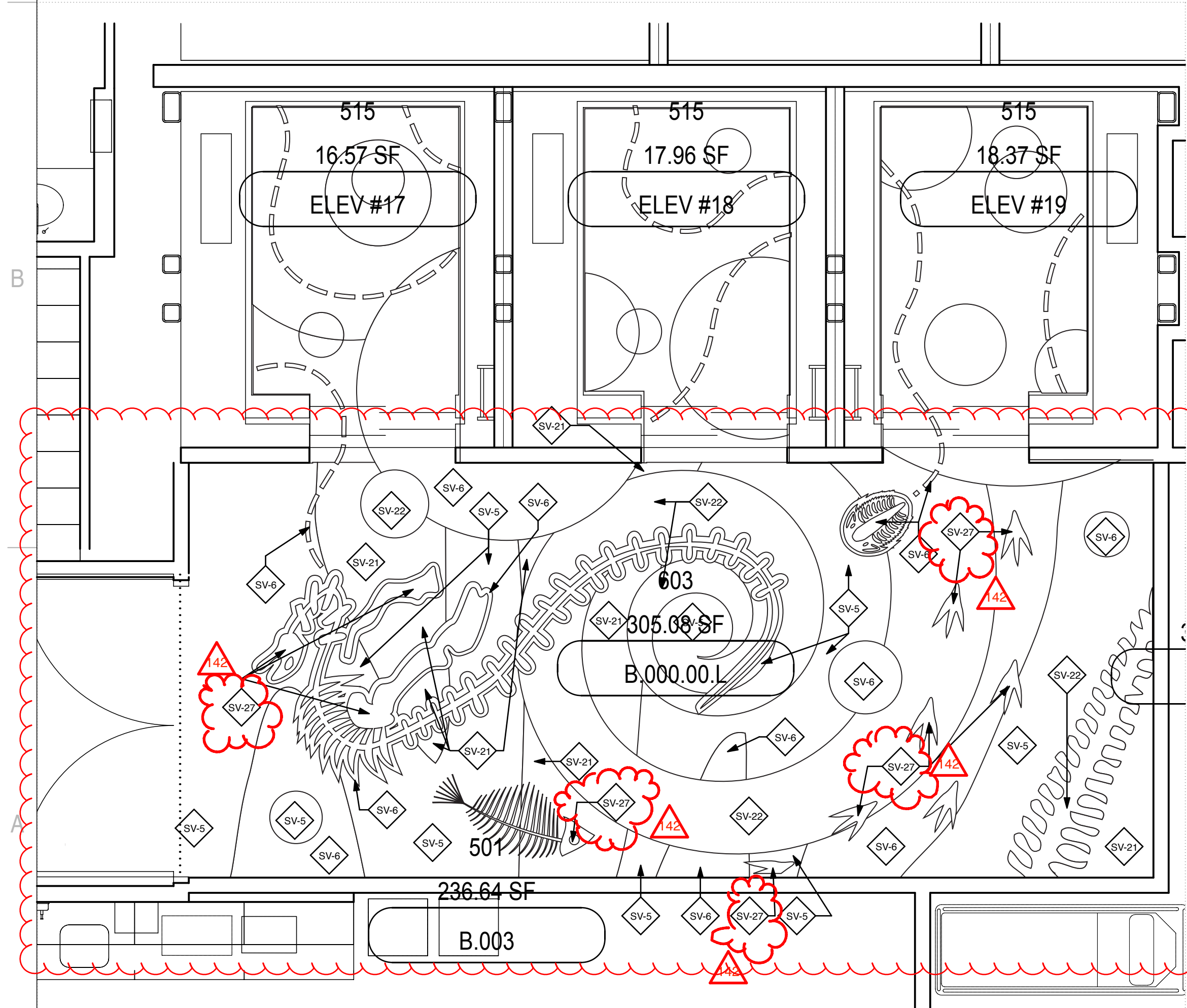


C6 Enlarged Finish Plan - Lv. 1
SCALE: 3/8" = 1'-0"



A6 Enlarged Finish Plan - Lower Level
SCALE: 3/8" = 1'-0"

General Notes

- REFER TO FINISH PLAN FOR ADDITION INFORMATION.
- TERRAZZO FLOOR TRANSITIONS BETWEEN VARIOUS COLOR AND SECTIONS ARE AS FOLLOWS:
 - TRANSITIONS BETWEEN LARGE COLOR FLOOR CURVES/ARCS ARE TO BE 1/4" THICK ZINC STRIPS.
 - TRANSITION AT CONTROL JOINTS ARE TO BE 1/8" THICK ZINC STRIPS.
 - TRANSITIONS AT CONTROL JOINTS ARE TO BE 1/16" THICK ZINC STRIPS.
 - TRANSITIONS BETWEEN TERRAZZO AND OTHER FLOOR MATERIALS ARE TO BE 1/8" THICK ZINC STRIPS.
- SMALL PIECES IN DESIGN NOT DESIGNATED WITH SPECIFIC FINISH CODE TO BE INSTALLED FROM RANDOM ASSORTMENT OF ALL SCHEDULED ACCENT COLOR SHEET VINYL.
- ALL PIECES OF SHEET VINYL IN PATTERNED AREA TO BE WATER JET CUT AND SEAMS TO BE CHEMICALLY BONDED.
- ENLARGED PLAN TO SHOW DETAIL IN FLOOR PATTERN ONLY. REFER TO IA SHEETS, CODE TO FINISHES AND ROOM FINISH SCHEDULE FOR INFORMATION REGARDING ALL OTHER FINISHES IN AREA.

RFI 5832

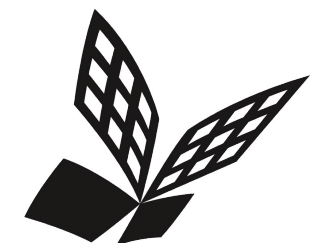
General Notes

-

NOTE: PROVIDE SHOP DRAWINGS OF ALL SHEET VINYL, CARPET, AND TERRAZZO FLOOR PATTERNS PRIOR TO ORDERING / FABRICATION AND INSTALLATION. PATTERNS ARE INTENDED TO BE "FREE-FORM" IN NATURE, AND HENCE CANNOT BE DIMENSIONED. CAD FILES WILL BE PROVIDED AS NECESSARY TO APPROPRIATELY MEET THE ABOVE REQUIREMENT.

Legend

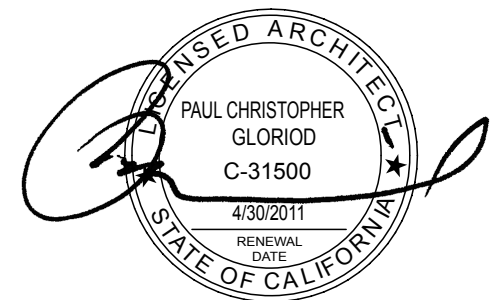
- FIN WALL FINISH
- FIN FLOOR FINISH



FKP Architects

ARCHITECT OF RECORD

Paul C. Gloriot



REVISIONS



1/31/2012 ASI 159
Delta 142

PROJECT NAME
**CHILDREN'S
HOSPITAL OF
ORANGE COUNTY**
455 S. Main St.
Orange, CA 92668-3874

TOWER II



PROJECT NUMBER

12011.00
Increment # 7

OSHPD - PROJECT NUMBER

IL 072072-30

ISSUE

ASI 159 Delta 142

DATE

1/31/2012

SCALE

As Noted

DRAWING TITLE

ENLARGED PLANS

DRAWING NUMBER

IA6.1