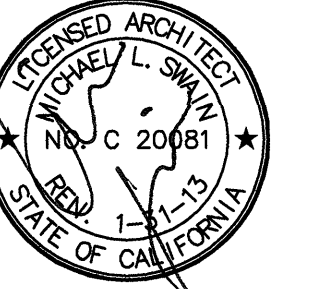


FKP Architects

ARCHITECT OF RECORD
Paul C. Gloriot

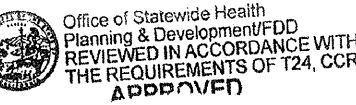


Changes on these drawings do not consist of
materially altered changes to approved drawings
and don't require a change order.
OSHPD review ACO
OSHPD review PLSC
OSHPD review DSE

REVISIONS

22 07/18/11 CO #178

APPROVAL



CHANGE ORDER
INSTRUCTION SHEET
DEPENDING APPROVALS
TECHNICAL

PROJECT NAME
**CHILDREN'S HOSPITAL
OF ORANGE COUNTY**
455 S. Main St.
Orange, CA 92668-3874

TOWER II
RECEIVED
July 20 2011
McCARTHY



PROJECT NUMBER
**12011.00
Increment #7**
OSHPD - PROJECT NUMBER
IL 072072-30

ISSUE
OSHPD PERMIT

DATE
01/27/2010
SCALE

AS NOTED
DRAWING TITLE

Level 1 Feature Wall
Profiles

DRAWING NUMBER

IA7.11

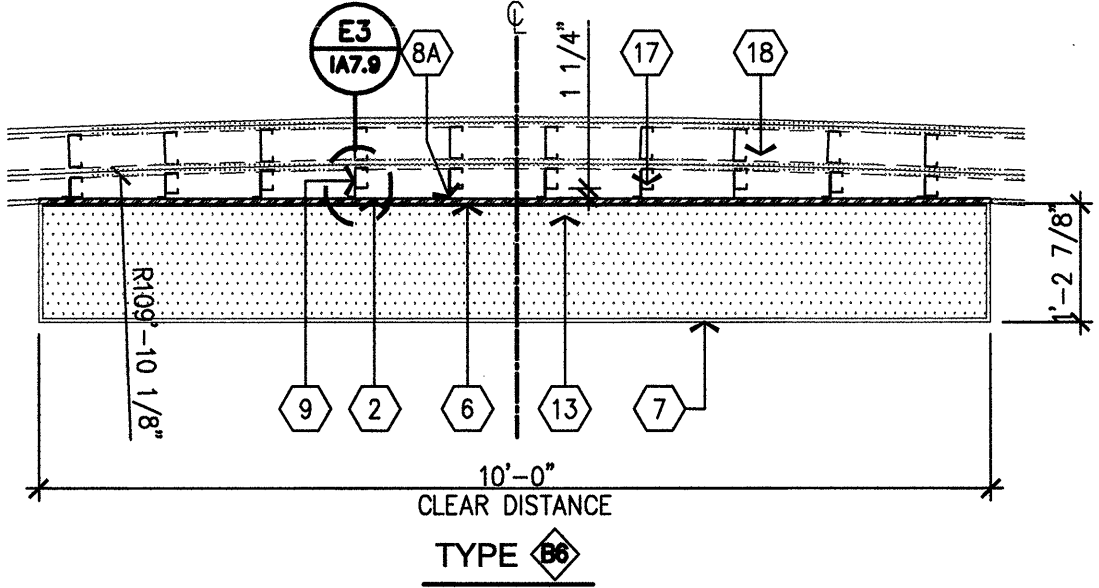
CO #178
FOR REFERENCE ONLY

RFI 5314: Feature Wall
to be painted PT-1

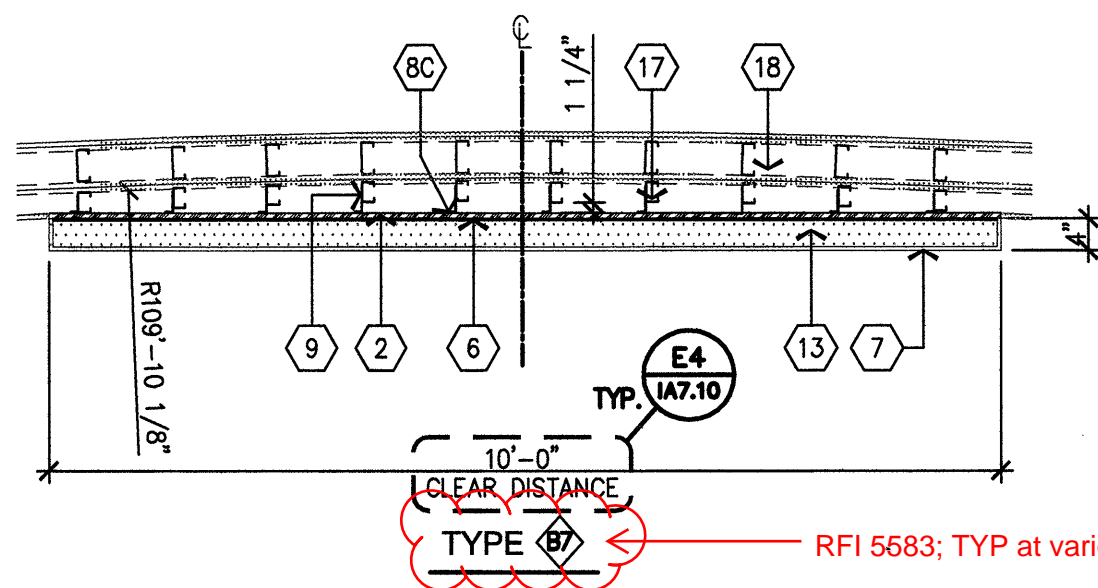
RFI 4424
27 regular corner bead to be installed
at 90 degree corners

E1 NOTES TO SHEET

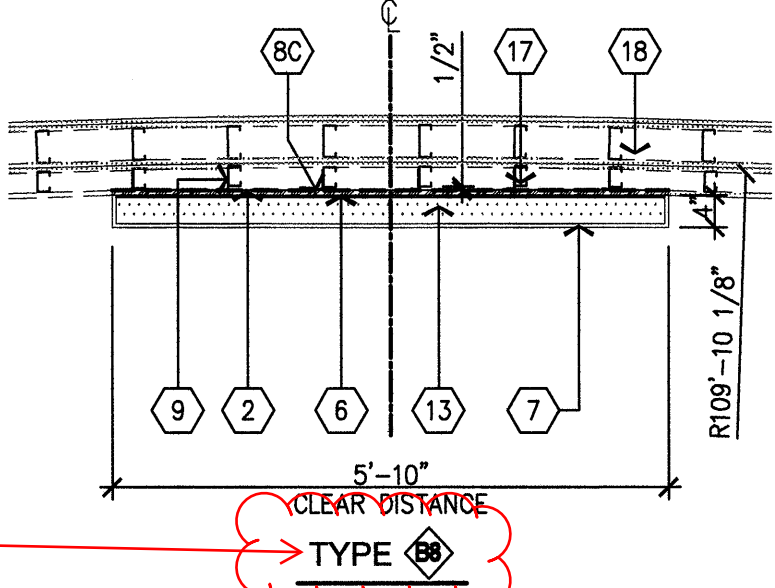
1. STAINLESS STEEL SURFACE MOUNTED BASE.
2. STRAIGHT SHEETROCK BEHIND LIGHT FIXTURE
3. PROVIDE (1) ADJUST. LAYER OF GYP. BD. OVER SOLED. LAYER ONE GYP.
4. PROVIDE (1) LAYER OF GYP. BD.
5. PROVIDE (2) LAYERS OF GYP. BD.
6. 1/4" REFLECTIVE PANEL FASTENS TO WALL BY OTHERS
7. 3 FORM LIGHT BOX
8. 16 GA BREAK METAL BACKING SHAPE:
A. 3 3/8" MAX. x 1 1/2" x 11 3/4"
B. 3 1/2" MAX. x 1 1/2" x 11 3/4"
C. 2 1/2" MAX. x 1 1/2" x 7 3/4"
D. 2 1/2" MAX. x 1 1/2" x 23 3/4"
9. 16 GA CLIP AT 12" O.C. - ONLY AT LIGHT BOX.
10. NOT USED
11. NOT USED
12. HAT CHANNEL
13. SP. LIGHT BOX (TYP.) - 4" MIN. DEPTH.
14. BACKING PLATE 16 GA. x 6" CONT. BACKING APPLIED TO GYPSUM BOARD-TYPICAL
15. 250T125-54 CONT. TRACK-TYP.
16. 400T125-54 CONT. TRACK-TYP.
17. 250S162-54 METAL STUDS @ 12" O.C.-TYP.
18. 400S162-54 METAL STUDS @ 12" O.C. W/ 2 LAYERS OF GYPSUM BOARD EACH SIDE
19. 125S162-54 METAL STUDS @ 12" O.C.-TYP.
20. PROVIDE 3/4" CONDUIT, 4 X 4 BOX @ EACH LIGHT BOX. CENTER CONDUIT ON EXIST. W/STUD AND RUN UP WALL TO 4" ABOVE TURNED WALL-TYPICAL.
21. CORNER BEADS "ULTRATIM OUTSIDE 90° BY NO-COAT - TYPICAL AT CORNERS



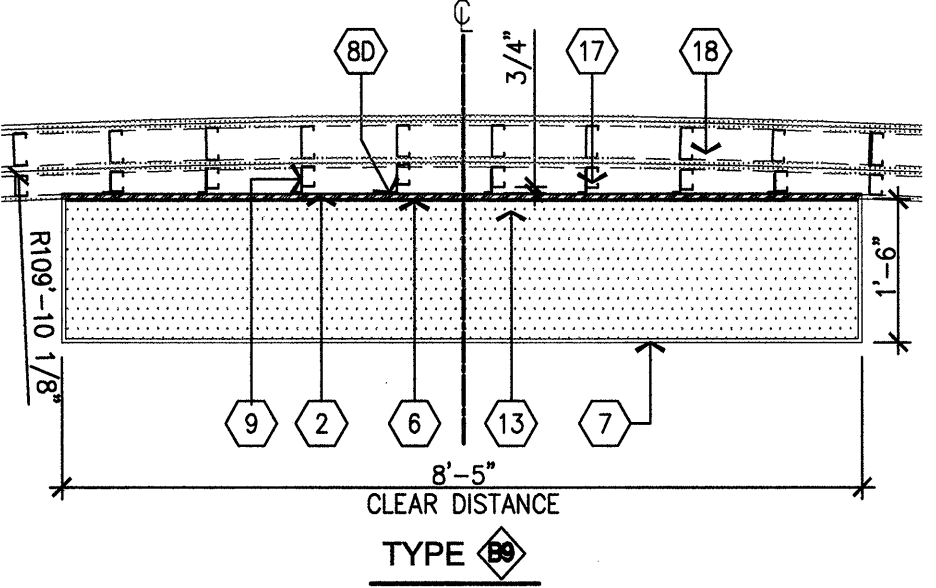
SECTION AT LIGHT FIXT.
SCALE: 1/2"=1'-0"



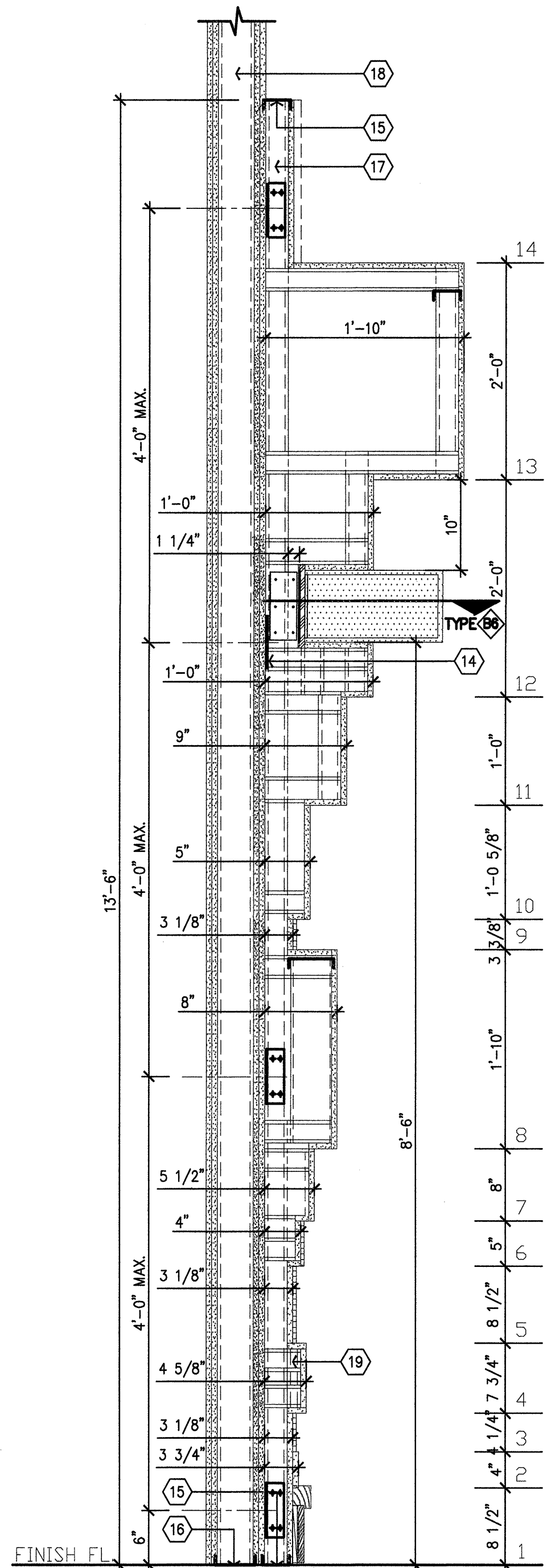
SECTION AT LIGHT FIXT.
SCALE: 1/2"=1'-0"



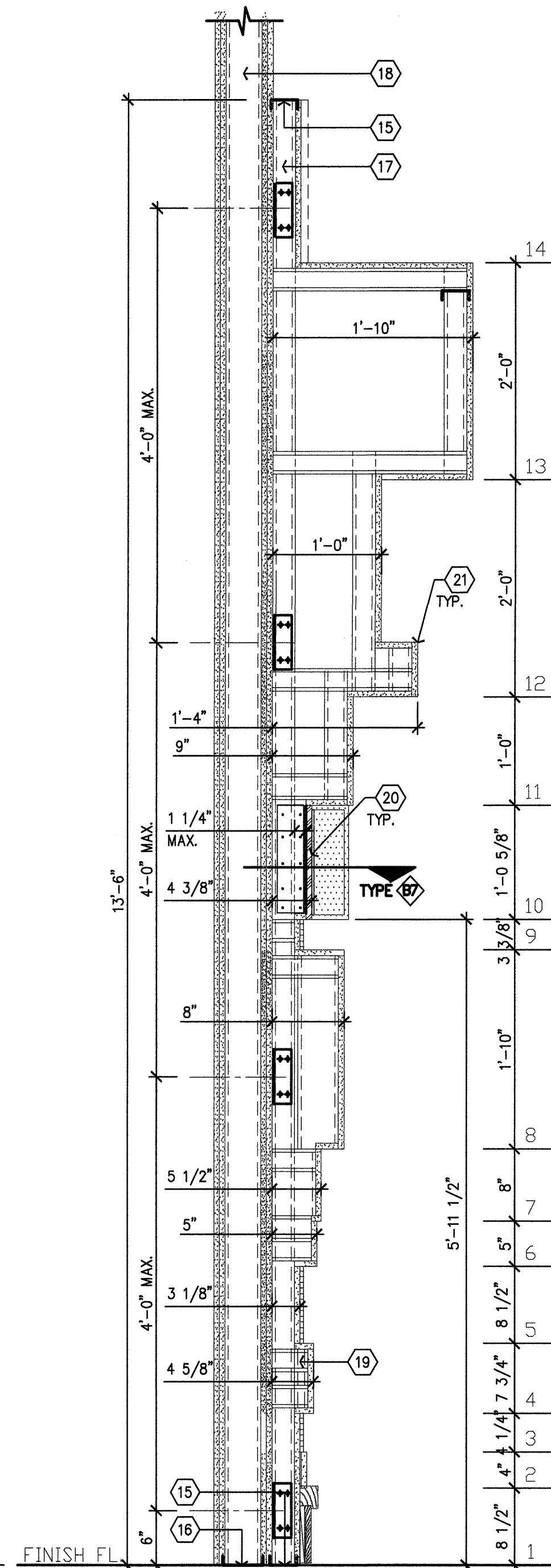
SECTION AT LIGHT FIXT.
SCALE: 1/2"=1'-0"



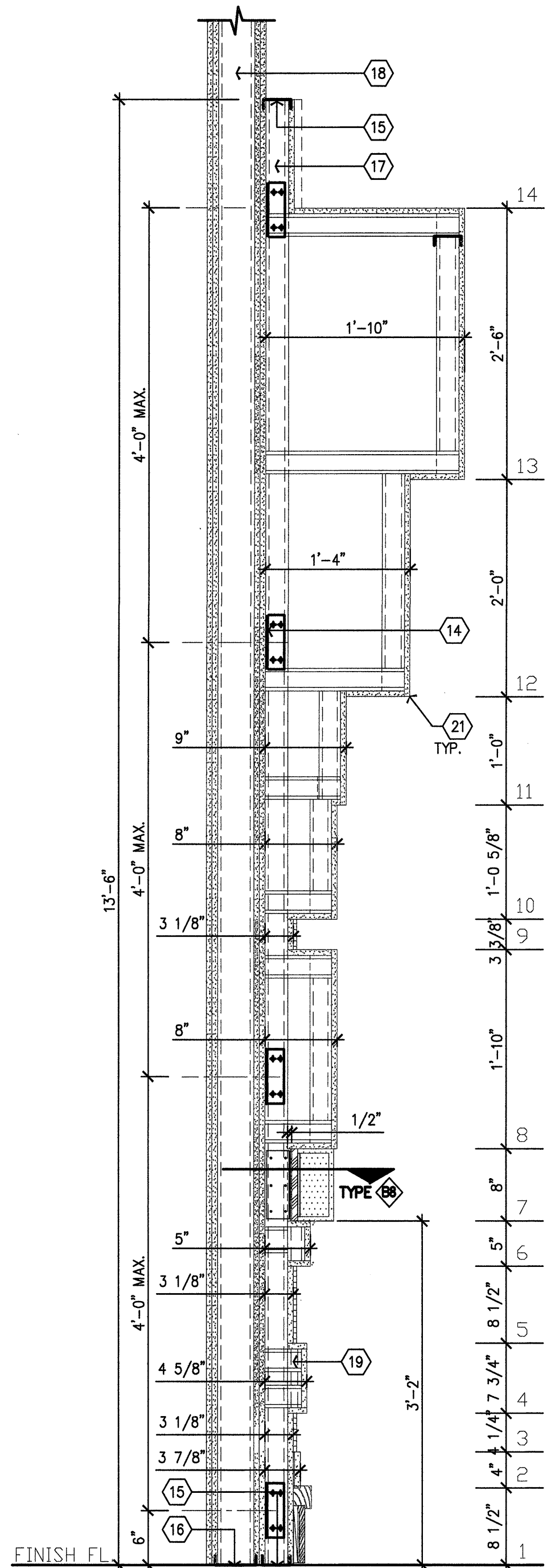
SECTION AT LIGHT FIXT.
SCALE: 1/2"=1'-0"



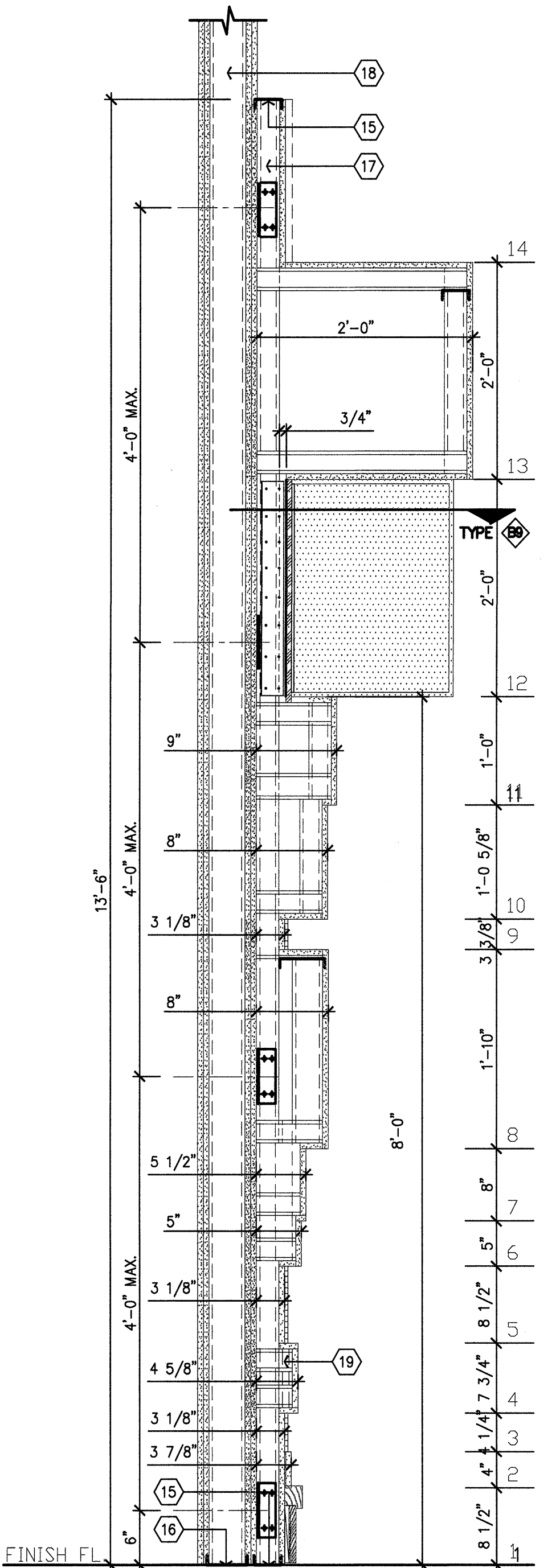
A6 PROFILE @ LIGHT BOX
SCALE: 1"=1'-0"



A5 PROFILE @ LIGHT BOX
SCALE: 1"=1'-0"



A4 PROFILE @ LIGHT BOX
SCALE: 1"=1'-0"



A3 PROFILE @ LIGHT BOX
SCALE: 1"=1'-0"

N:\06000\06102 CHOC TOWER 2 SHELL BUILDING\FCP CONTRACTED PROJECTS\PROJECT INCREMENTS\INCR. #07_TENANT IMPROVEMENT\OSHPD PERMIT (CONSTRUCTION DOCUMENTS)\06002_CO#7_A17.11.DWG
7/17/2011
RCL