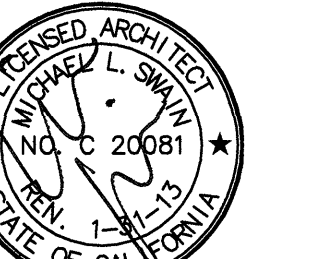


FKP Architects

ARCHITECT OF RECORD
Paul C. Gloriot

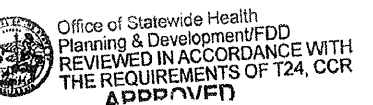


Changes on these drawings do not consist of materially altered changes to approved drawings and don't require a change order.
OSHPD review ACO
OSHPD review FLSO
OSHPD review DSE

REVISIONS

22A 07/18/11 CO #176

APPROVAL



CHANGE ORDER
INSTRUCTION BULLETIN
OFFERED APPROVAL
CONCURRENCE

PROJECT NAME
**CHILDREN'S HOSPITAL
OF ORANGE COUNTY**
455 S. Main St.
Orange, CA 92668-3874

TOWER II
RECEIVED
July 20 2011
McCarthy



PROJECT NUMBER
**12011.00
Increment #7**

OSHPD - PROJECT NUMBER
IL 072072-30

ISSUE
OSHPD PERMIT

DATE
01/27/2010

SCALE

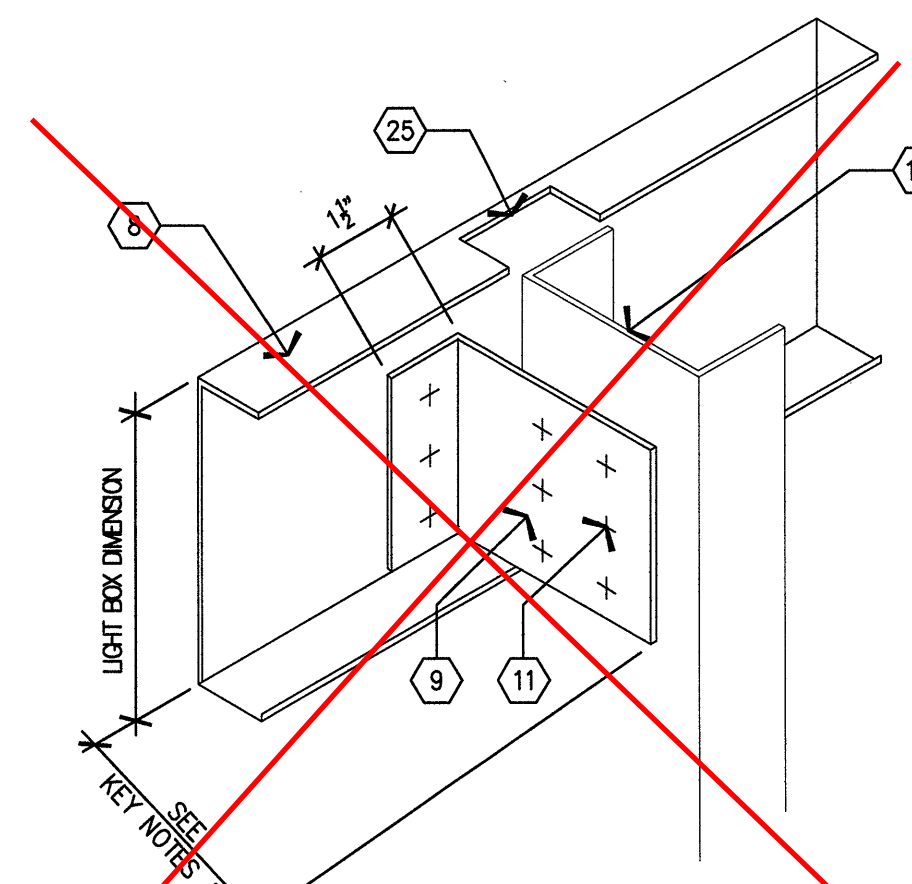
AS NOTED
DRAWING TITLE

Level 2 Feature Wall
Profiles

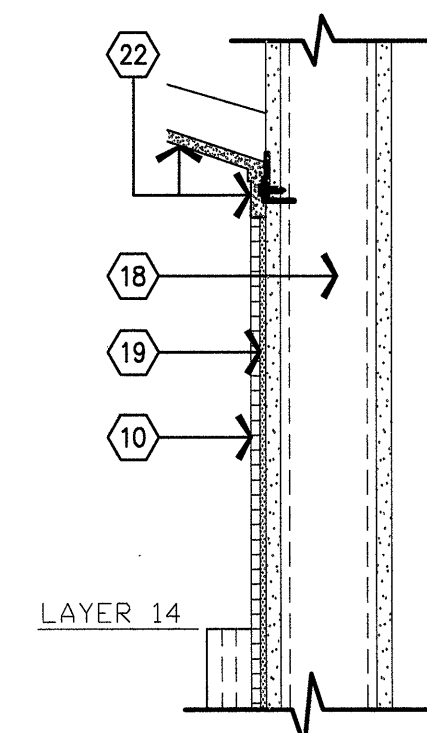
DRAWING NUMBER

IA7.9

FOR REFERENCE ONLY
CO #176



See RFI 4590.1 for Light
Box Attachment Info



1. (1) LAYER OF 5/8" GYP. BD. OVER LAYER 1 SUBSTRATE.
2. (2) LAYERS OF 5/8" GYP. BD. OVER LAYER 1 SUBSTRATE.
3. SCHED. WALL TILE ON LAYER 1 SUBSTRATE
4. PROVIDE (1) LAYER OF GYP. BD.
5. PROVIDE (2) LAYERS OF GYP. BD.
6. 1/4" REFLECTIVE PANEL. FASTENS TO WALL BY OTHERS
7. 3 FORM LIGHT BOX.
8. 16 GA BREAK METAL BACKING SHAPE:
A. 2 1/2" MAX. x 1 1/2" x 15 3/4"
B. 2 1/4" MAX. x 1 1/2" x 5 3/4"
C. 1 1/2" MAX. x 1 1/2" x 7 3/4"
D. 2 1/2" MAX. x 1 1/2" x 13 3/4"
E. 3 1/2" MAX. x 1 1/2" x 7 3/4"
F. 2 1/2" MAX. x 1 1/2" x 4 3/4"
G. 3 1/2" MAX. x 1 1/2" x 15 3/4"
H. 4 1/2" MAX. x 1 1/2" x 17 3/4"
I. 2 1/2" MAX. x 1 1/2" x 33 3/4"
J. 4 1/2" MAX. x 1 1/2" x 11 3/4"
9. 16 GA CLIP AT 12" O.C. - ONLY AT LIGHT BOX.
10. SCHED. WALL TILE
11. 4-#10 SMS MIN. EA. LEG SINGLE OR DOUBLE ROW
12. HAT CHANNEL
13. SP LIGHT BOX (TYP.) - 4" MIN. DEPTH
14. BACKING PLATE 16 GA. x 6" CONT. BACKING APPLIED TO GYPSUM BOARD-TYPICAL
15. 250125-54 CONT. TRACK-TYP.
16. 400125-54 CONT. TRACK-TYP.
17. 2505162-54 METAL STUDS @ 12" O.C.-TYP.
18. 4005162-54 METAL STUDS @ 12" O.C. W/ 2 LAYERS OF GYPSUM BOARD EACH SIDE
19. 1/2" Rock sheet.
20. 90 deg clip
21. Not used.
22. GRC DOME CEILING PANEL
23. STAINLESS STEEL SURFACE MOUNTED BASE.
24. STRAIGHT SHEETROCK BEHIND LIGHT FIXTURE
25. NOTCH AT WALL STUD WHERE REQUIRED.
26. DYE-BE TO ADJ. "W" CHART" BELOW
27. CORNER BEADS "ULTRAM" OUTSIDE 90° BY NO-COAT - TYPICAL AT CORNERS
28. 2505162-54 METAL STUDS @ 12" O.C.-TYP.
29. PROVIDE 3/4" CONDUIT, 4 X 4 BOX @ EACH LIGHT BOX. CENTER CONDUIT ON EACH LIGHT AND RUN UP WALL TO 6" ABOVE FURRED WALL - TYPICAL.

RFI 4424
27 regular corner bead to be installed
at 90 degree corners

RFI 5314: Feature Wall
to be painted PT-1

D1 NOTES TO SHEET

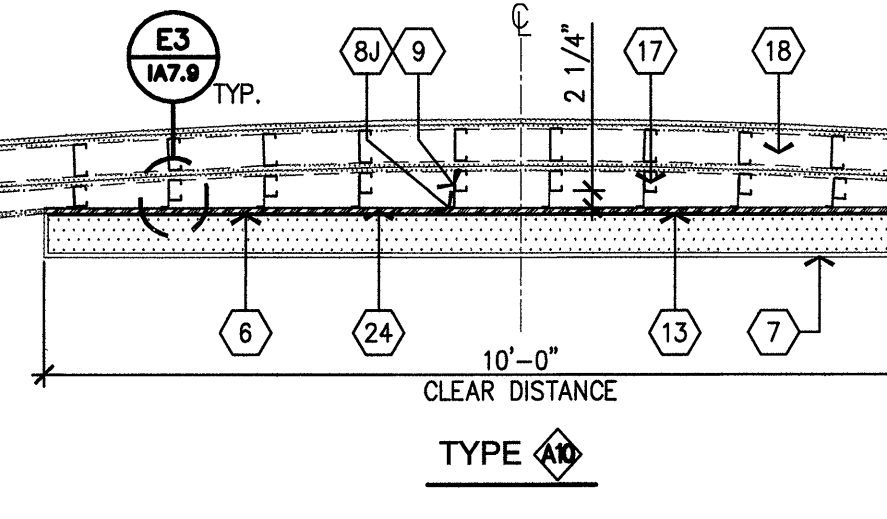
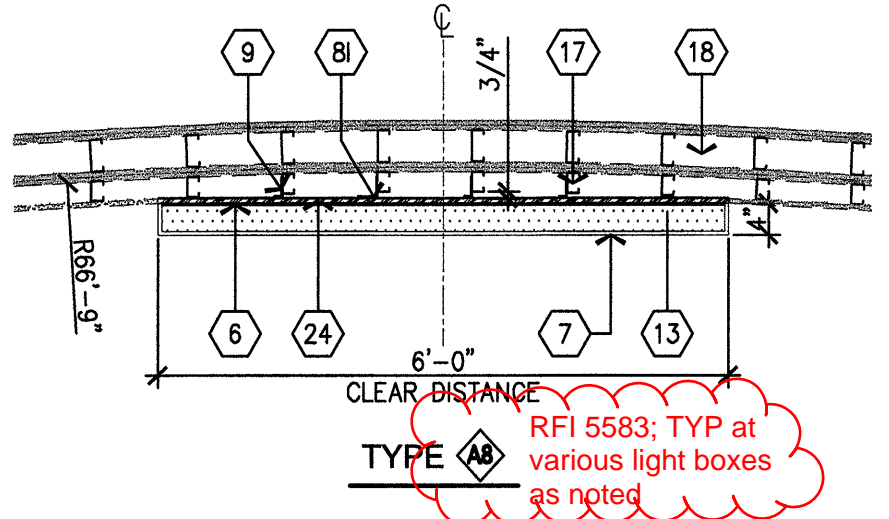
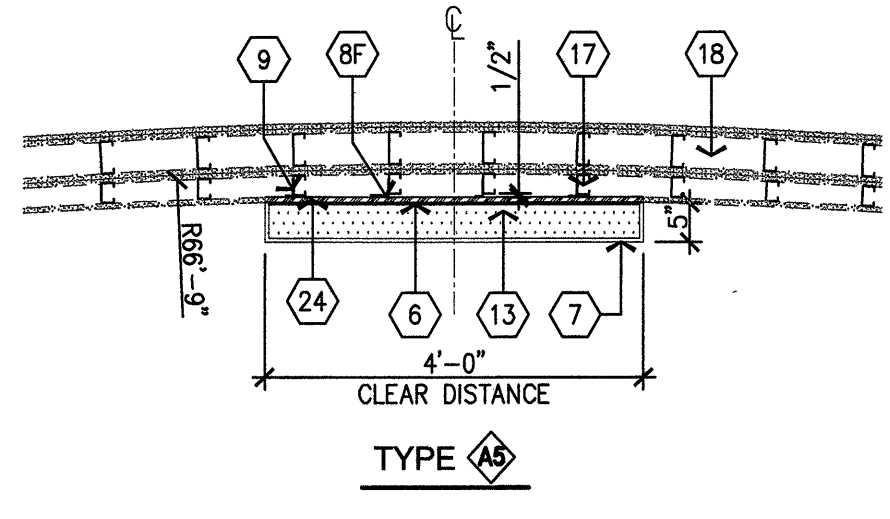
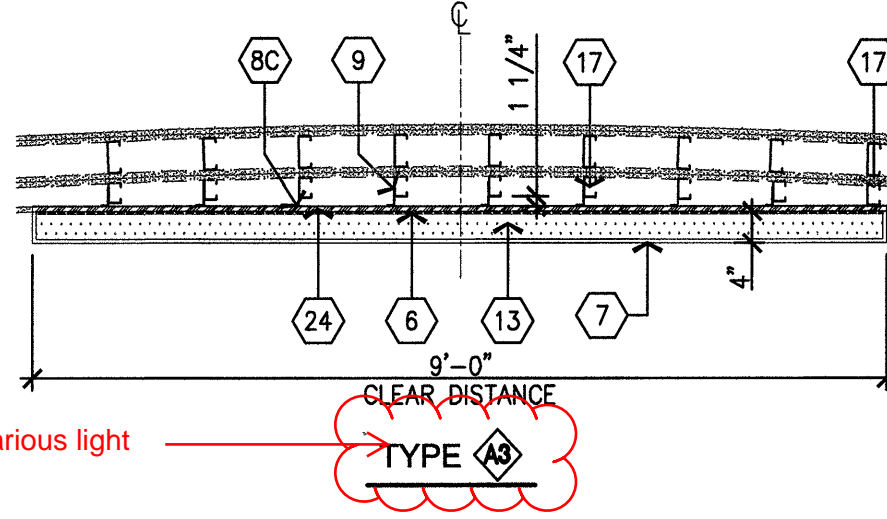
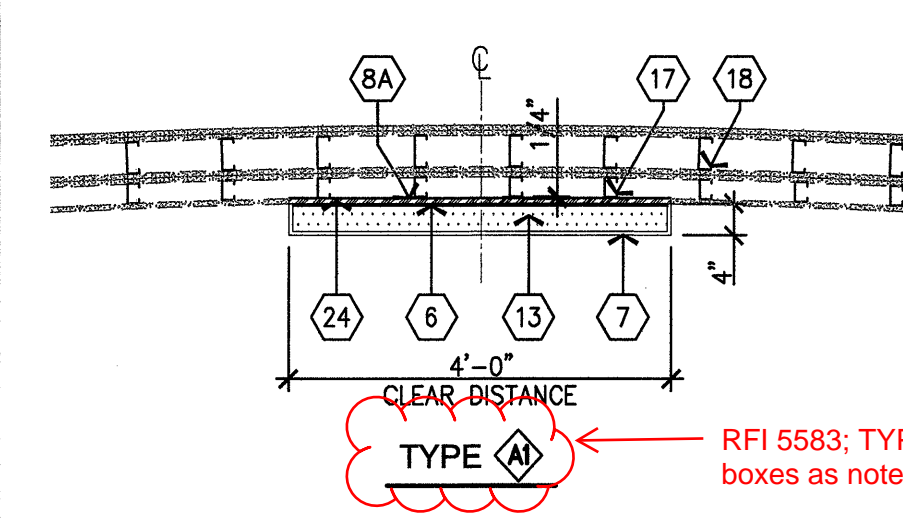
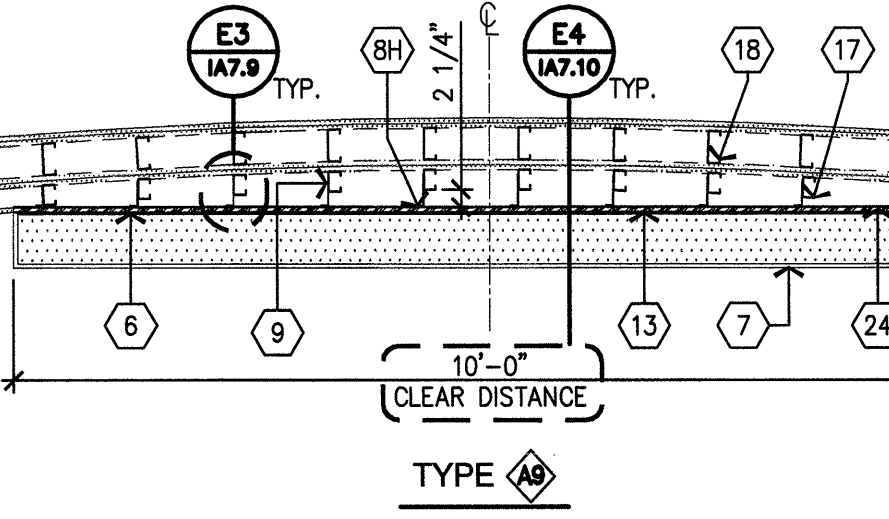
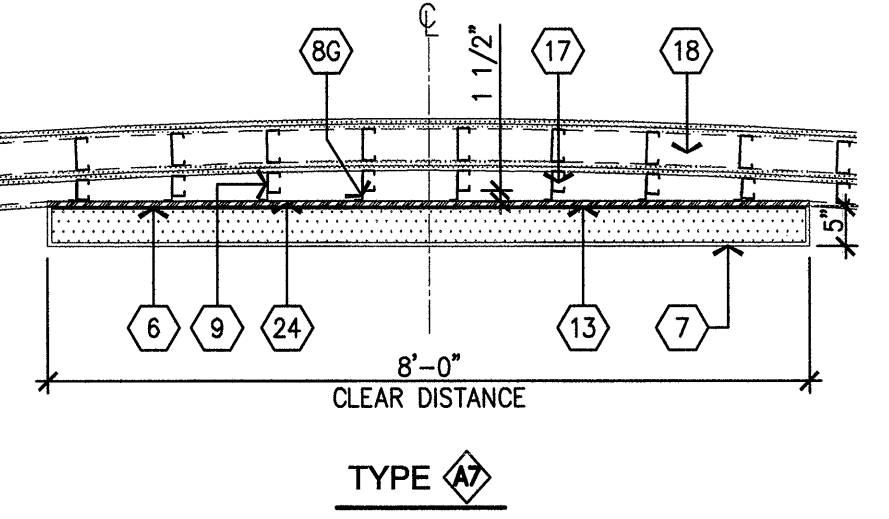
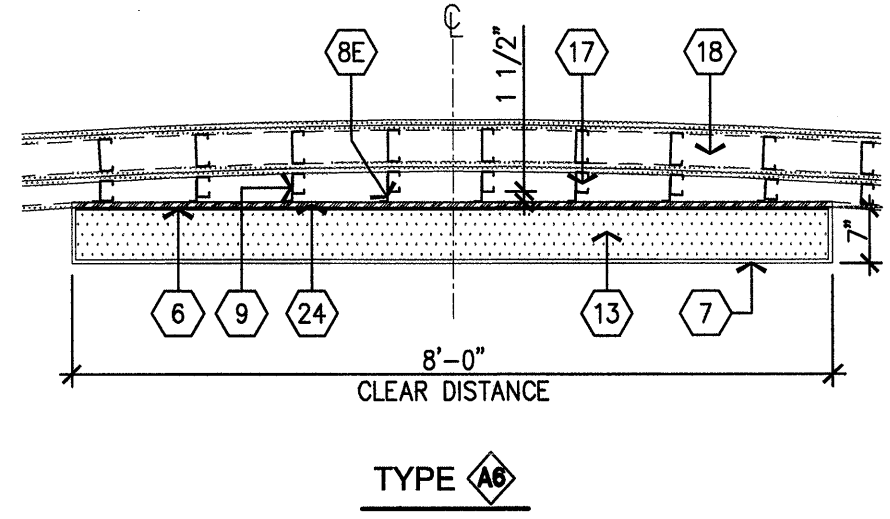
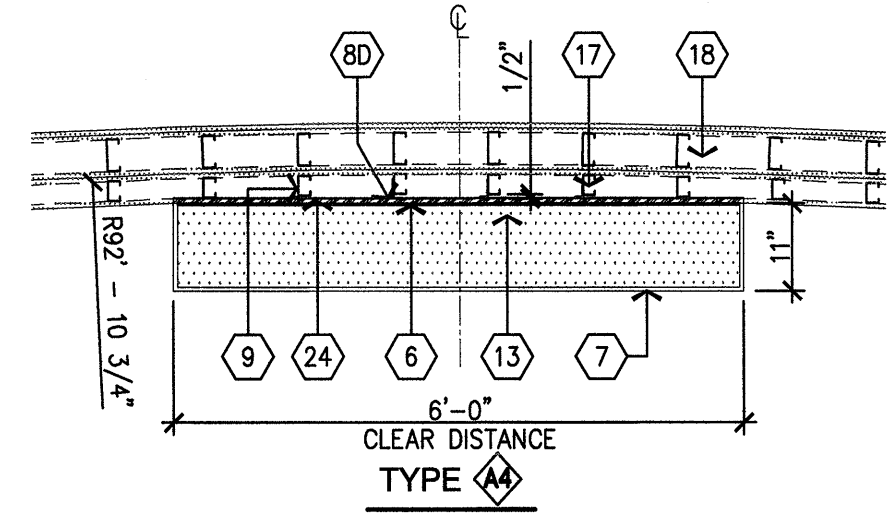
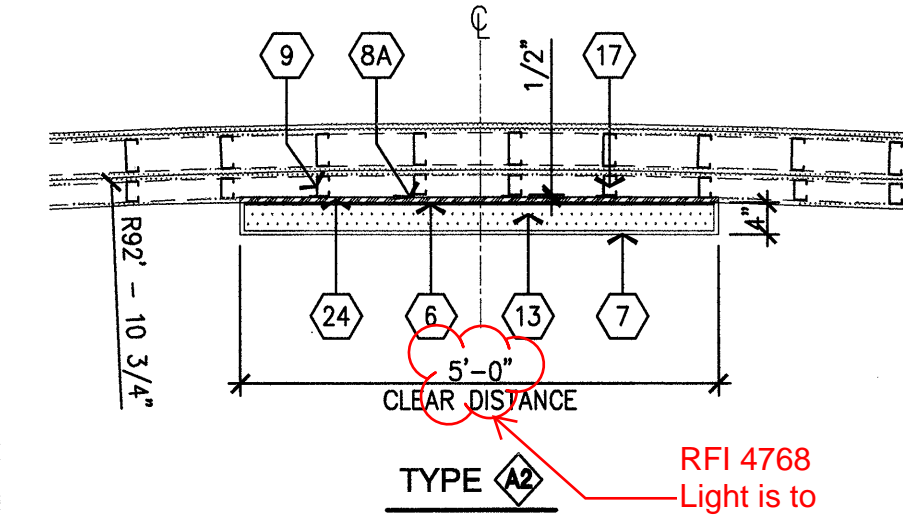
E6 NOT USED

E5 NOT USED

E4 NOT USED

E3 LIGHT BOX ATTACHMENT - TYPICAL
1-1/2" x 1-1/2"

E2 END CONDITION AT GRC DOME CLG.
1-1/2" x 1-1/2"



SECTION AT LIGHT FIXT.
SCALE: 1/2" = 1'-0"

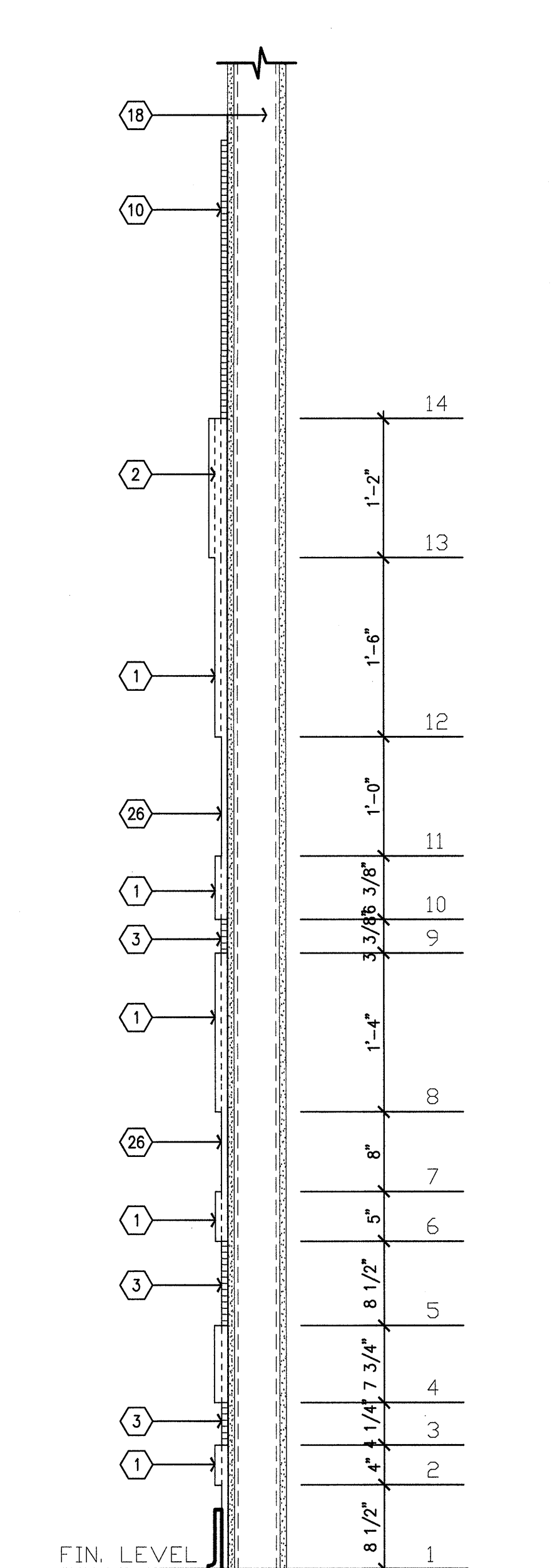
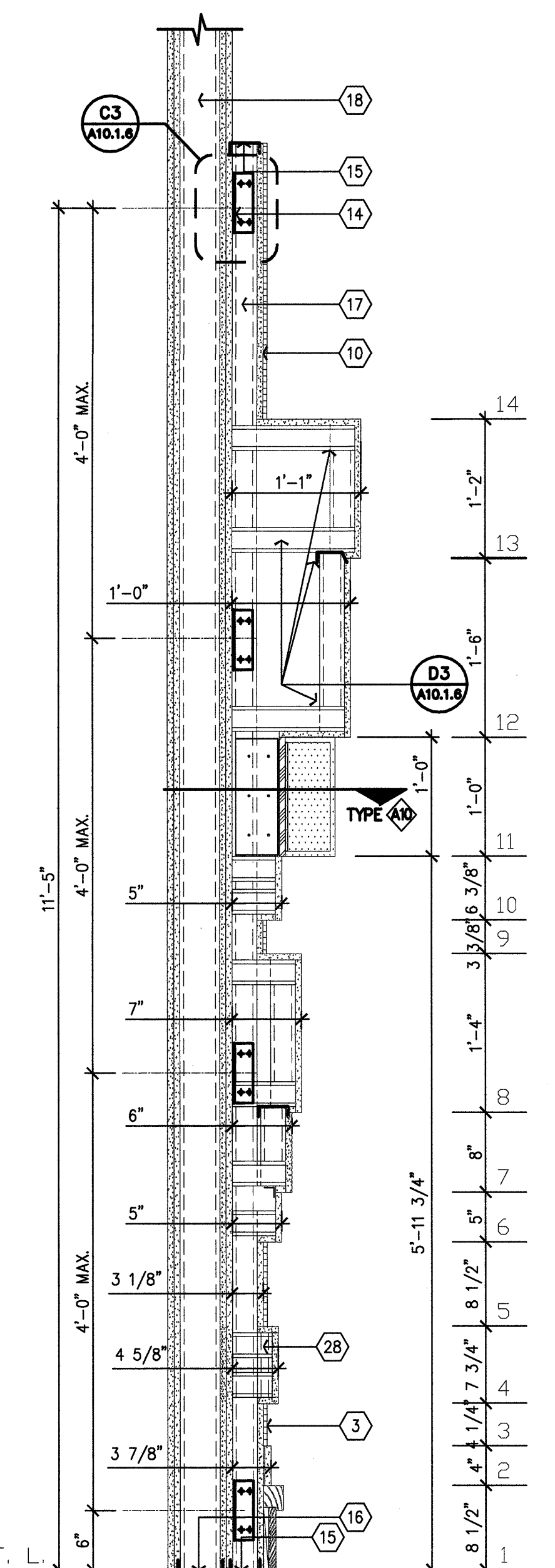
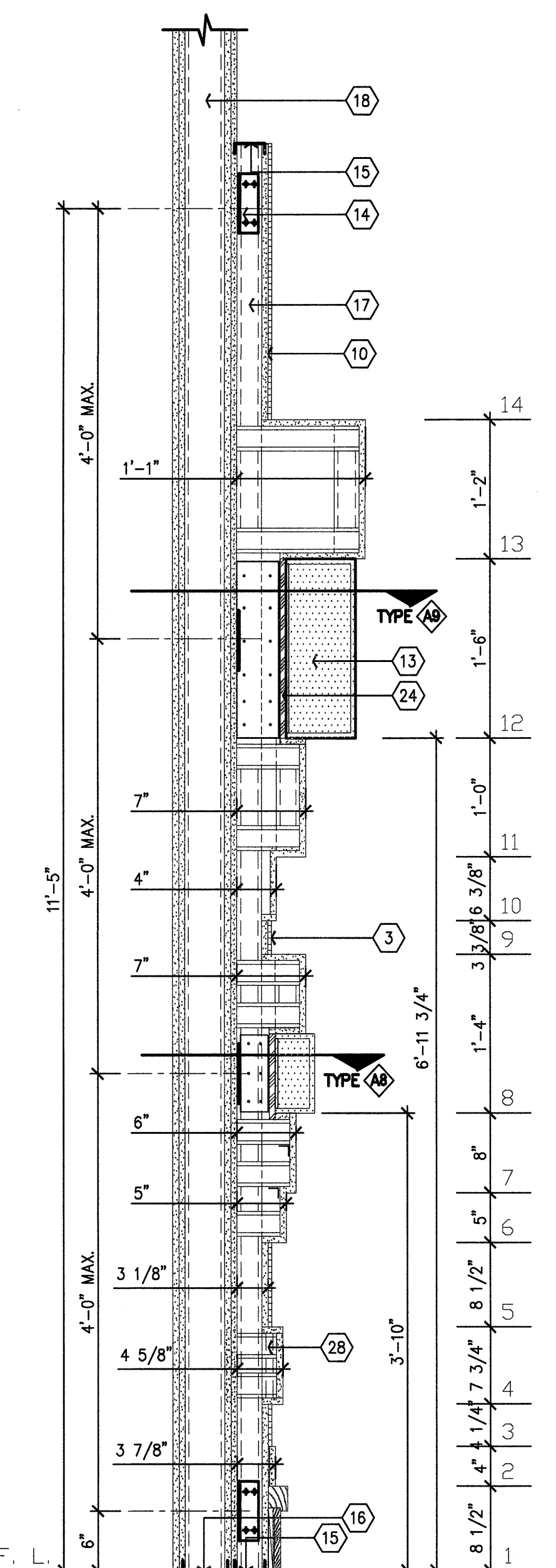
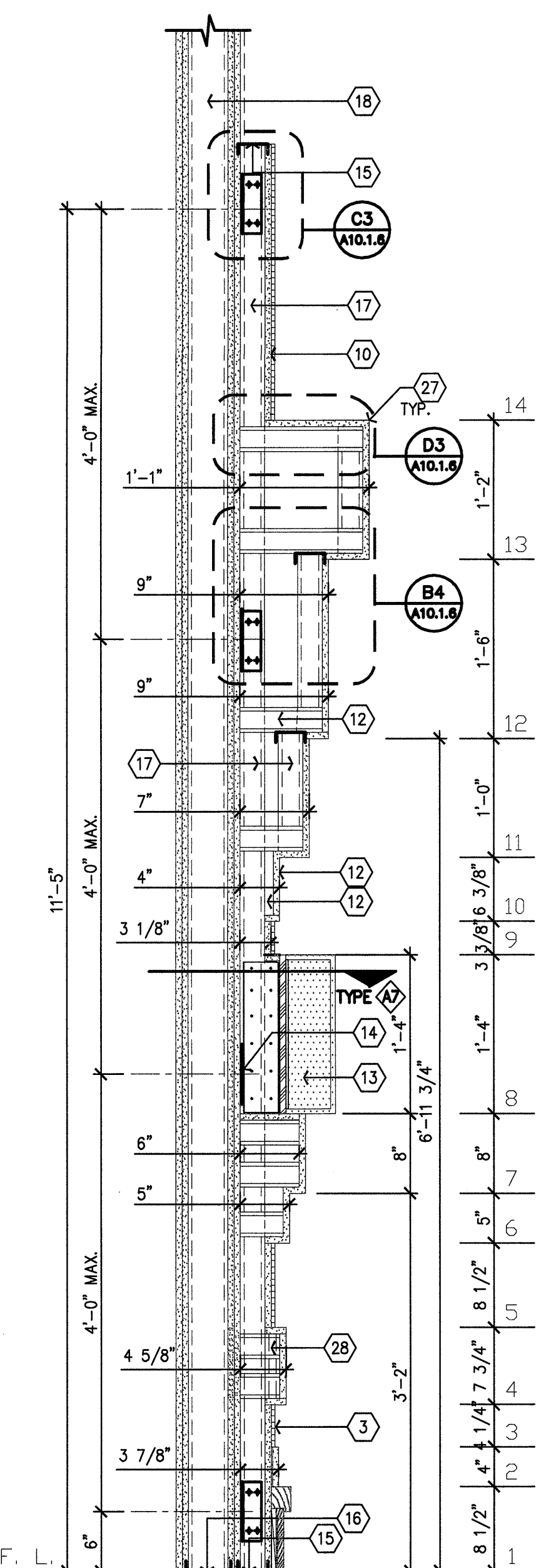
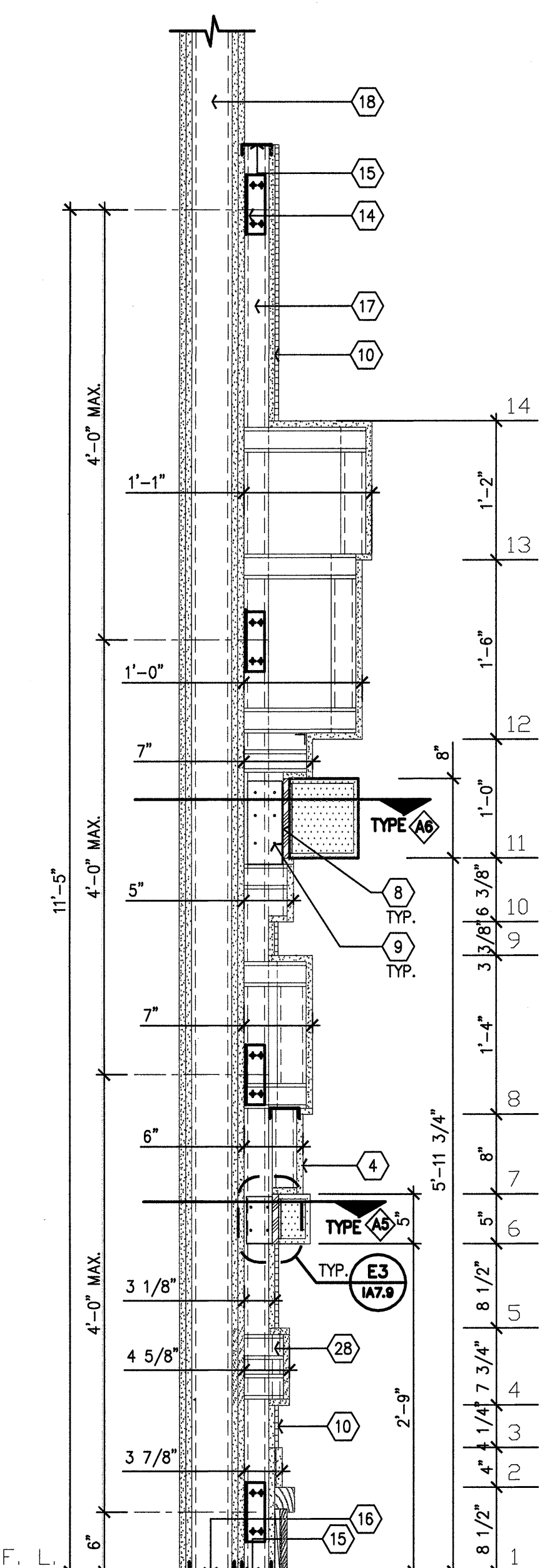
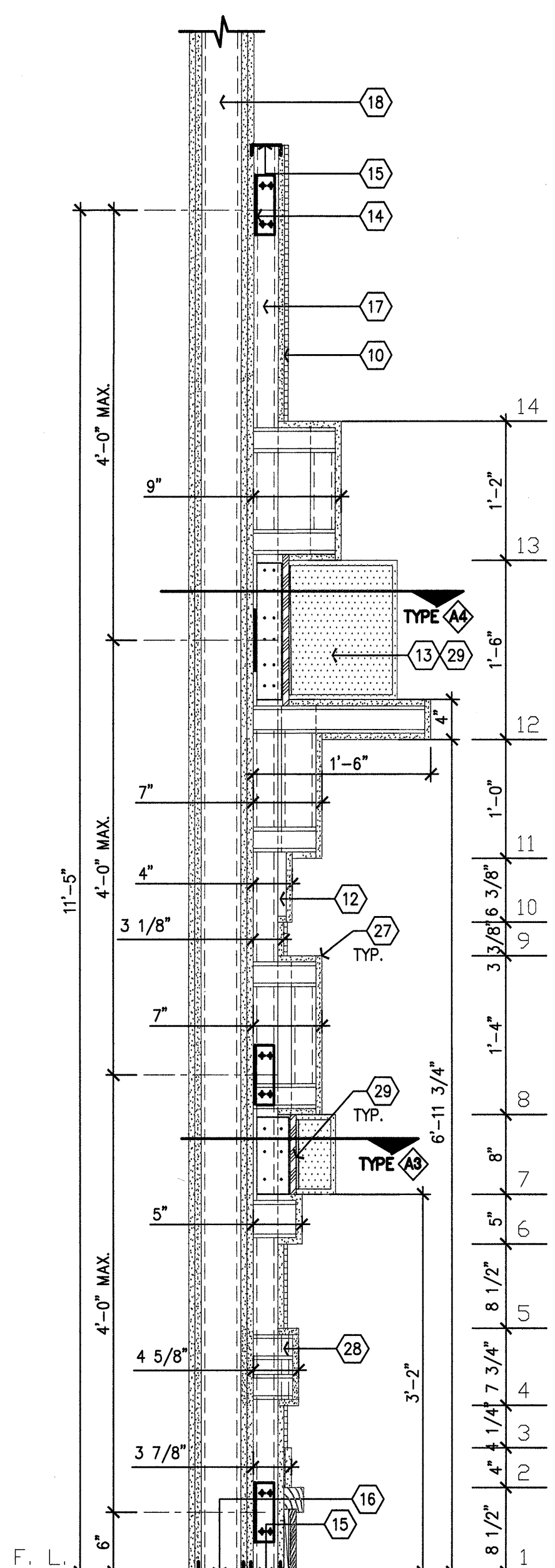
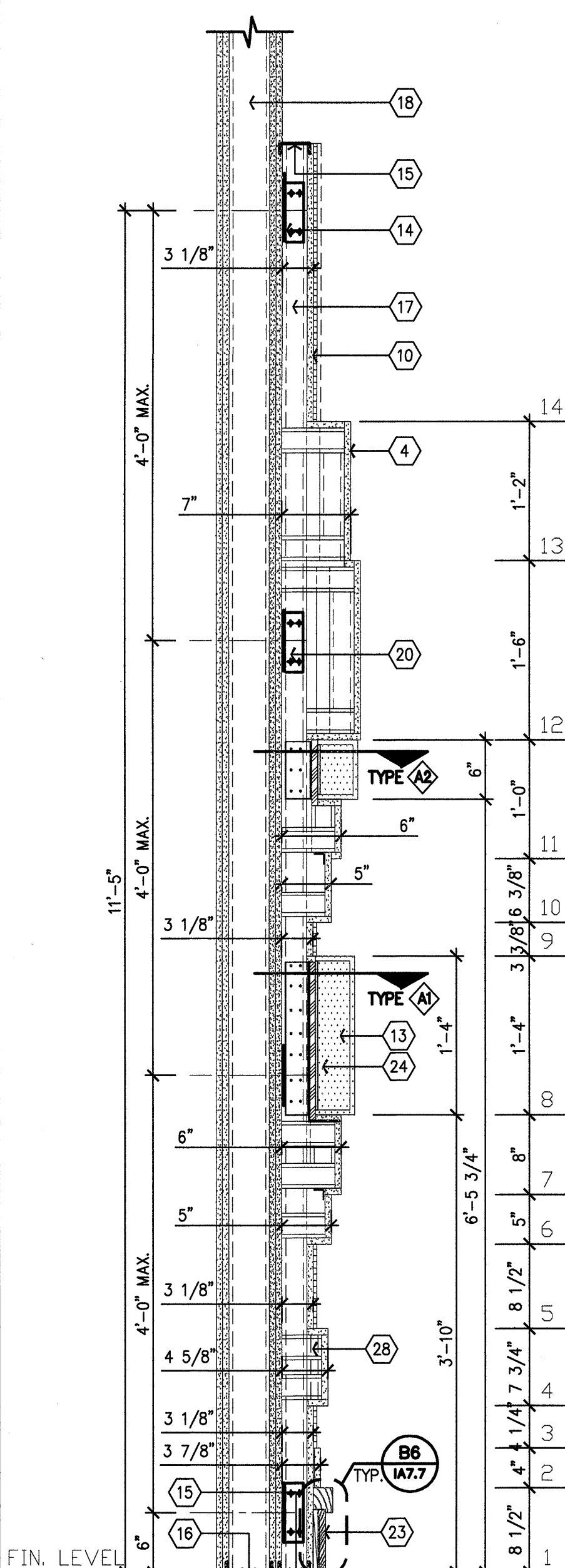
SECTION AT LIGHT FIXT.
SCALE: 1/2" = 1'-0"

SECTION AT LIGHT FIXT.
SCALE: 1/2" = 1'-0"

SECTION AT LIGHT FIXT.
SCALE: 1/2" = 1'-0"

SECTION AT LIGHT FIXT.
SCALE: 1/2" = 1'-0"

SECTION AT LIGHT FIXT.
SCALE: 1/2" = 1'-0"



A6 PROFILE @ LIGHT BOX
1" = 1'-0"

A5 PROFILE @ LIGHT BOX
1" = 1'-0"

A4 PROFILE @ LIGHT BOX
1" = 1'-0"

A3 PROFILE @ LIGHT BOX
1" = 1'-0"

A2 PROFILE @ LIGHT BOX
1" = 1'-0"

A1 PROFILE @ LIGHT BOX
1" = 1'-0"

C1 END CONDITION PROFILE
1" = 1'-0"

6

5

4

3

2

1

N:\0600\06102 CHOC TOWER 2 SHELL BUILDING\FC CONTRACTED PROJECTS\PROJECT INCREMENTS\INCR_#07_TENANT IMPROVEMENT\OSHPD PERMIT (CONSTRUCTION DOCUMENTS)\00602_CO#176.DWG
7/13/2011
RCL