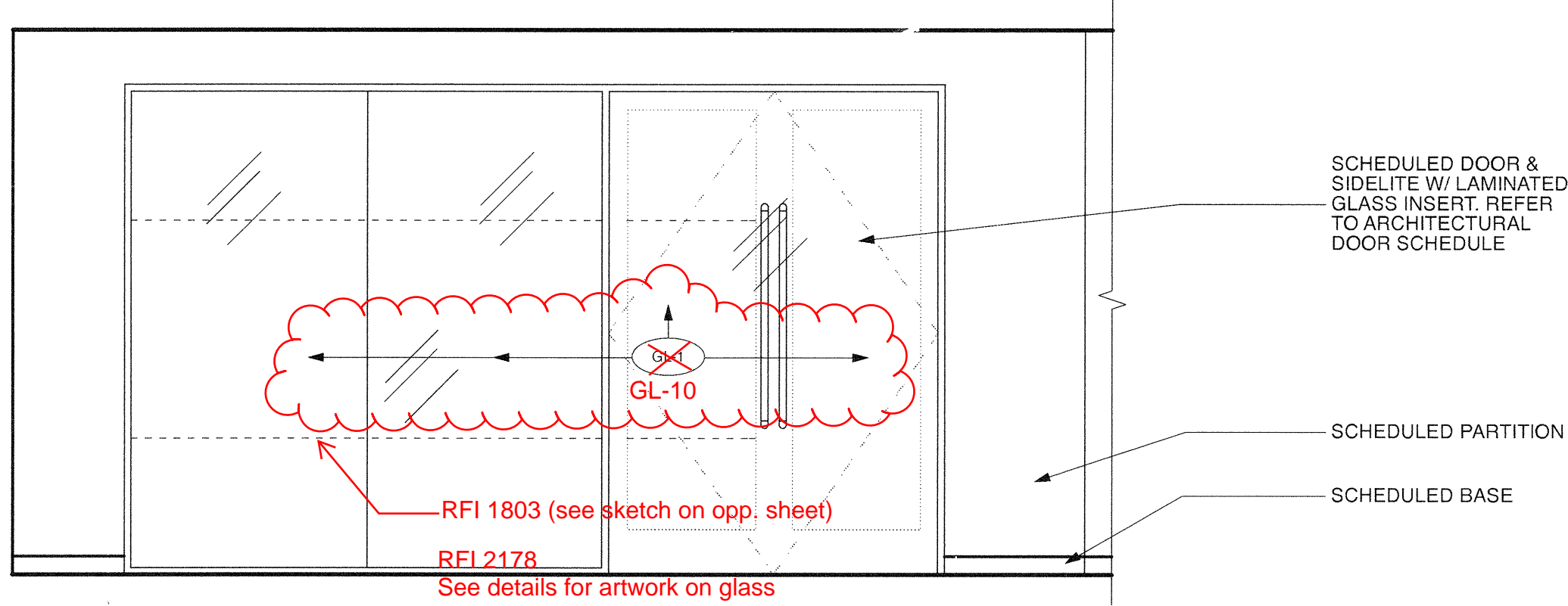
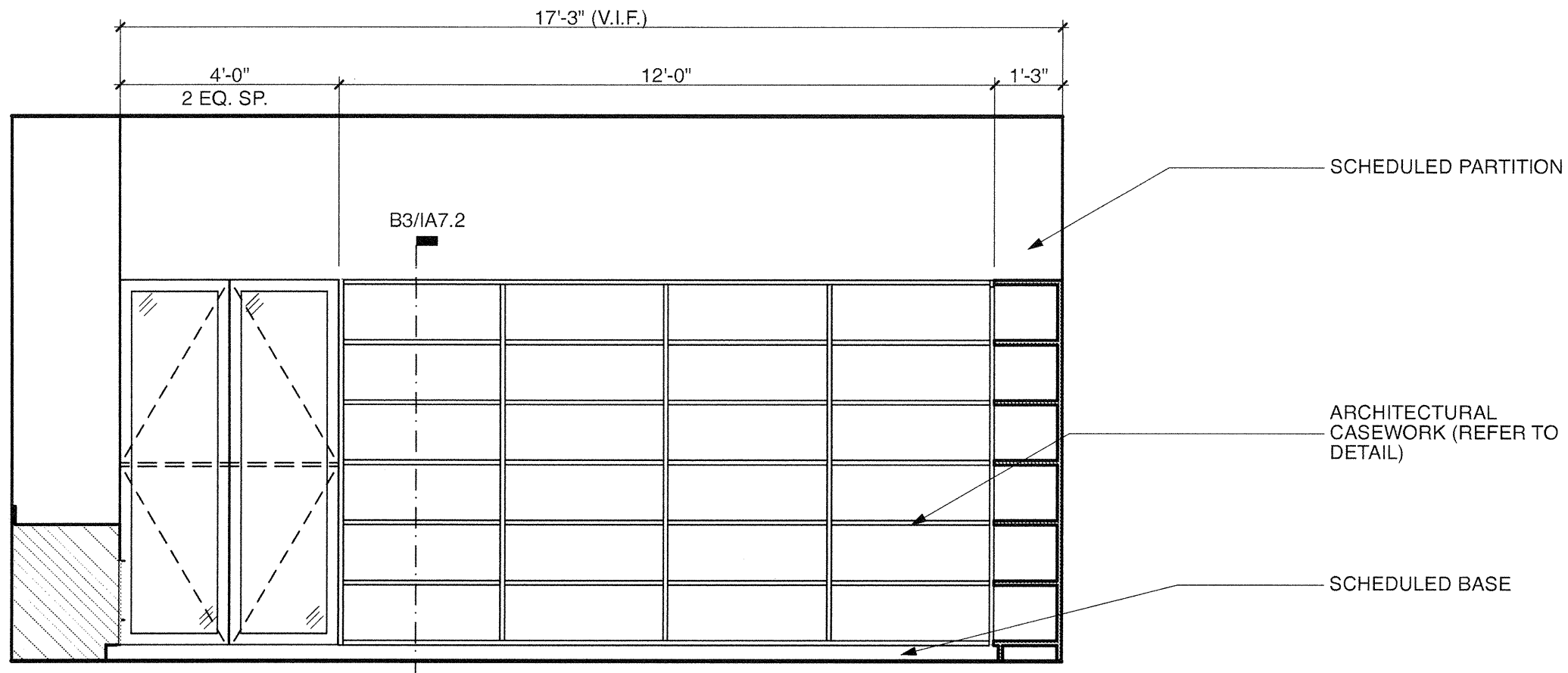


E

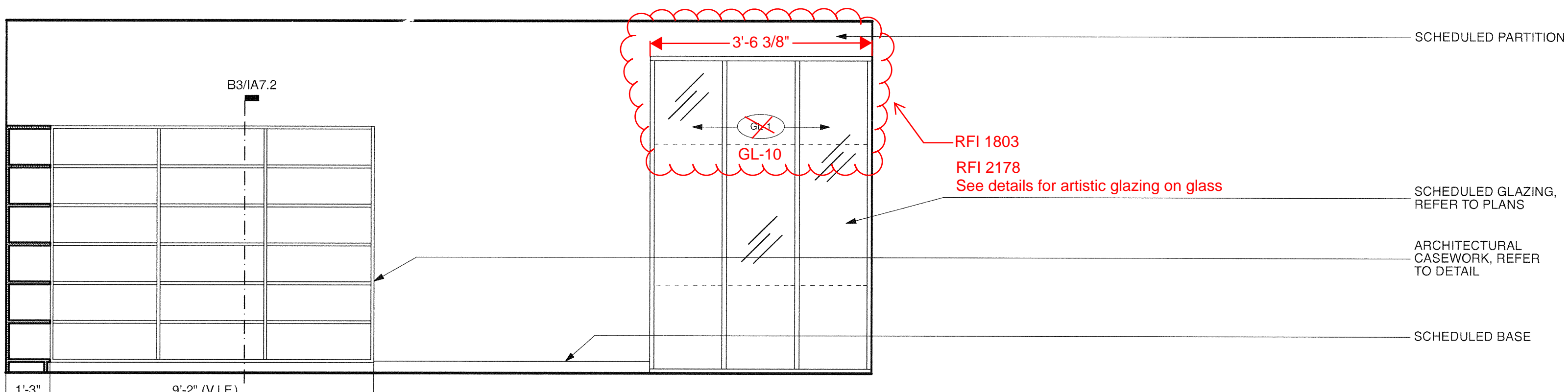


E5 Level 2 Family 2
SCALE: 3/8" = 1'-0"

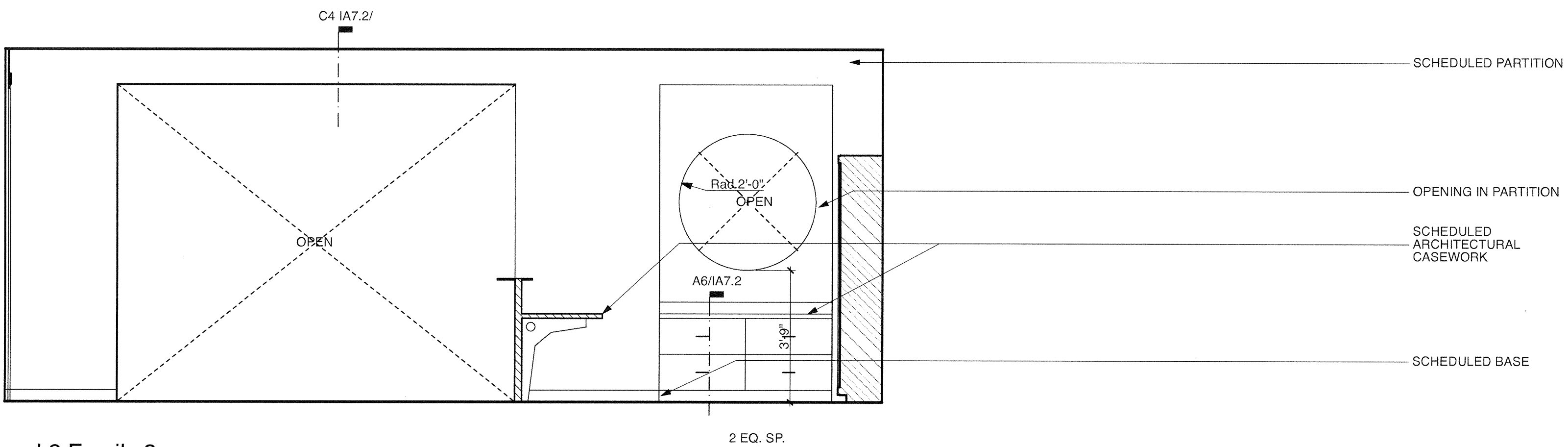


D5 Level 2 Family 4
SCALE: 3/8" = 1'-0"

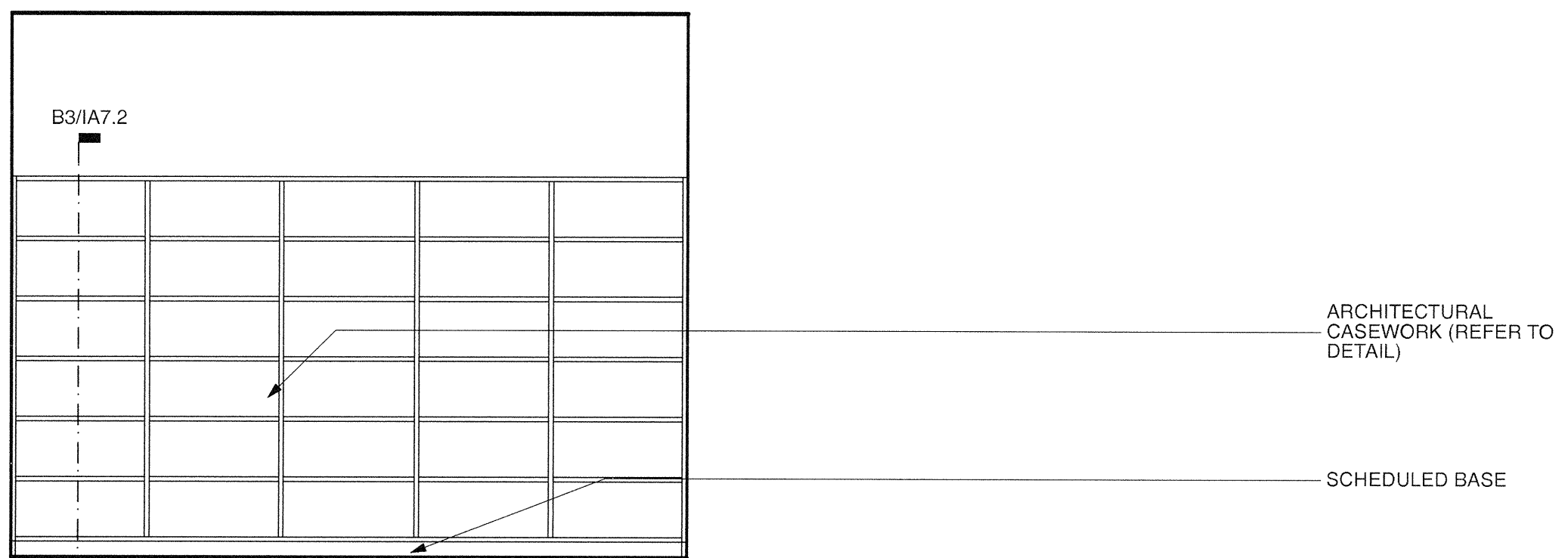
E3 Level 2 Family 1
SCALE: 3/8" = 1'-0"



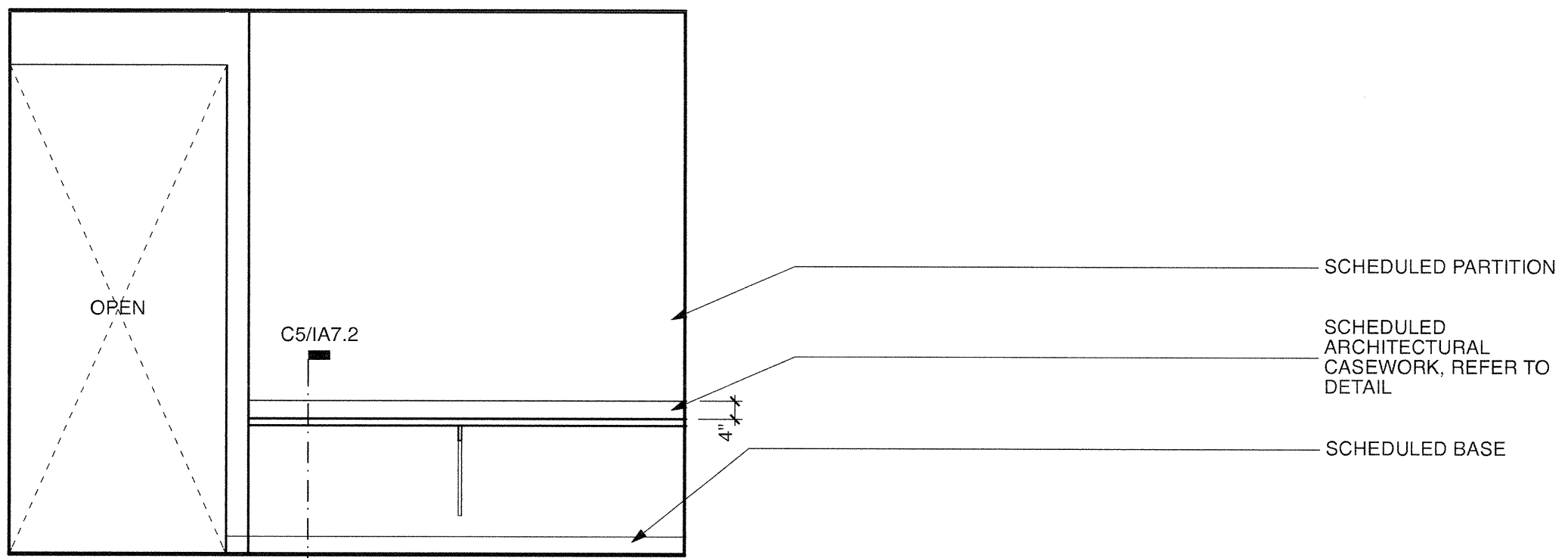
D3 Level 2 Family 3
SCALE: 3/8" = 1'-0"



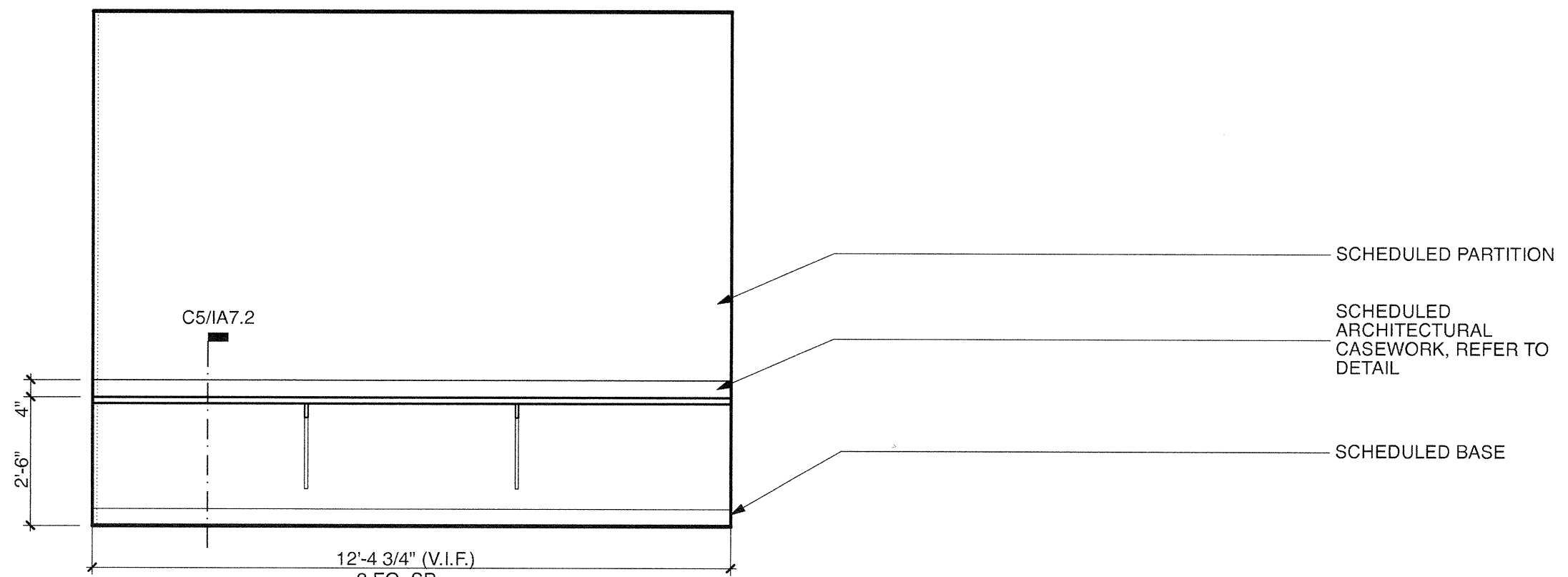
C2 Level 2 Family 7
SCALE: 3/8" = 1'-0"



B2 Level 2 Library Office 1
SCALE: 3/8" = 1'-0"



A2 Level 2 Library Office 2
SCALE: 3/8" = 1'-0"



D

C

B

A

6

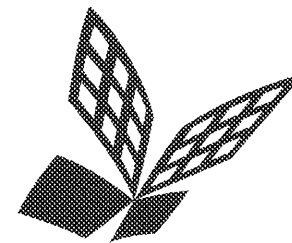
5

4

3

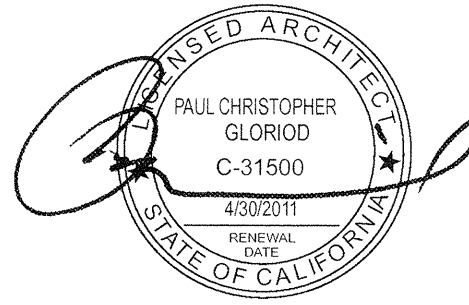
2

1



FKP Architects

ARCHITECT OF RECORD
Paul C. Gloriod



INVENTURE
DESIGN

REVISIONS

PROJECT NAME
CHILDREN'S
HOSPITAL OF
ORANGE COUNTY
455 S. Main St.
Orange, CA 92668-3874

TOWER II

CHOCSM
HOSPITAL

PROJECT NUMBER

12011.00
Increment # 7

OSHPD - PROJECT NUMBER

IL 072072-30

ISSUE

OSHPD Permit

DATE

01/27/2010

SCALE

As Noted

DRAWING TITLE

ELEVATIONS
LEVEL 2

DRAWING NUMBER

IA8.7