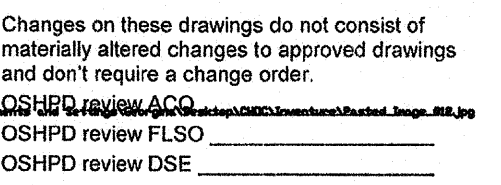


ARCHITECT OF RECORD
Paul C. Gloriod



	02/04/11	ASI #58
	06/08/11	CO #97

Office of Statewide Health
Planning & Development/FDD
REVIEWED IN ACCORDANCE WITH
THE REQUIREMENTS OF T24, CCR
APPROVED

6/7/11
 CHANGE ORDER# 97
 INSTRUCTION BULLETIN# _____
 DEFERRED APPROVAL# _____
 ADDENDUM _____

TOWER II

RECEIVED
June 08 2011
McCARTHY



12011.00
Increment #7

OSHPD - PROJECT NUMBER
IL 072072-30

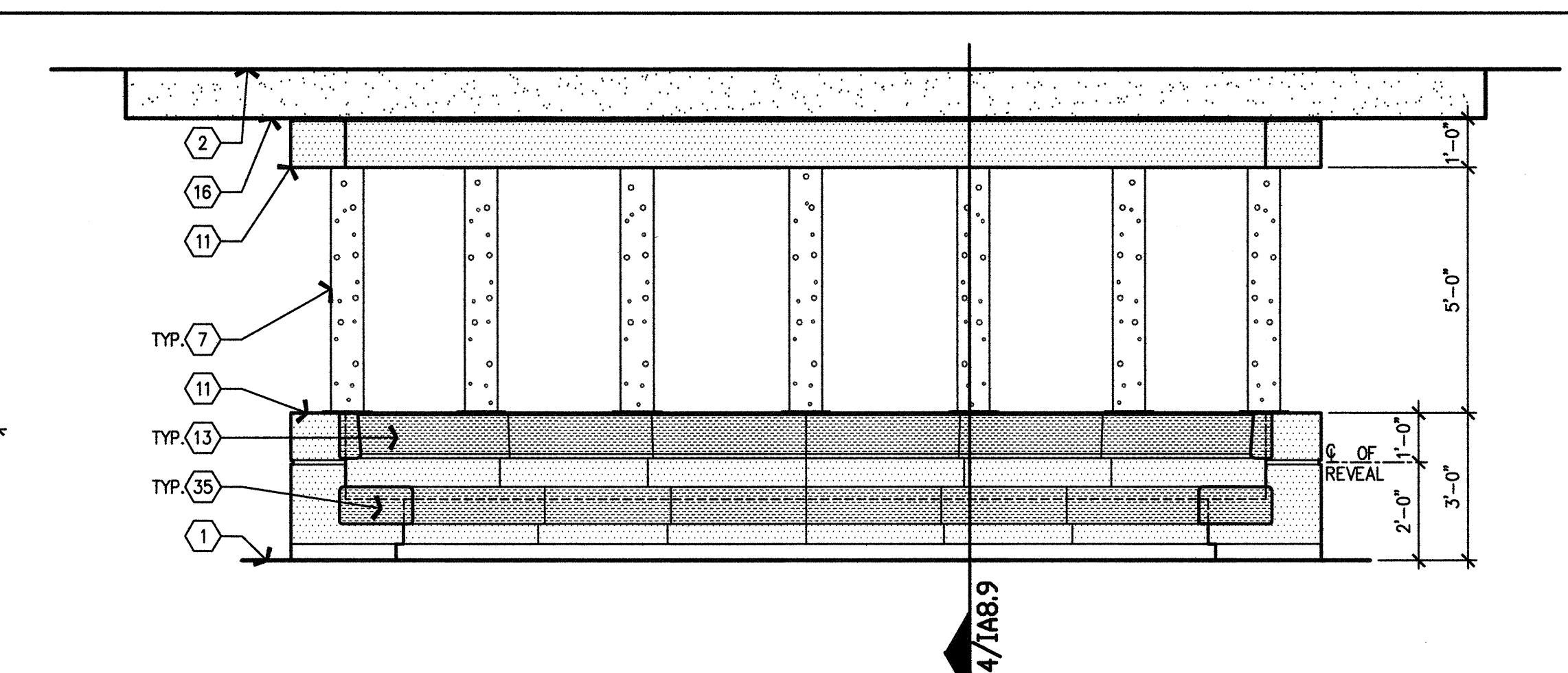
ISSUE
OSHPD PERMIT

DATE 01/27/2010

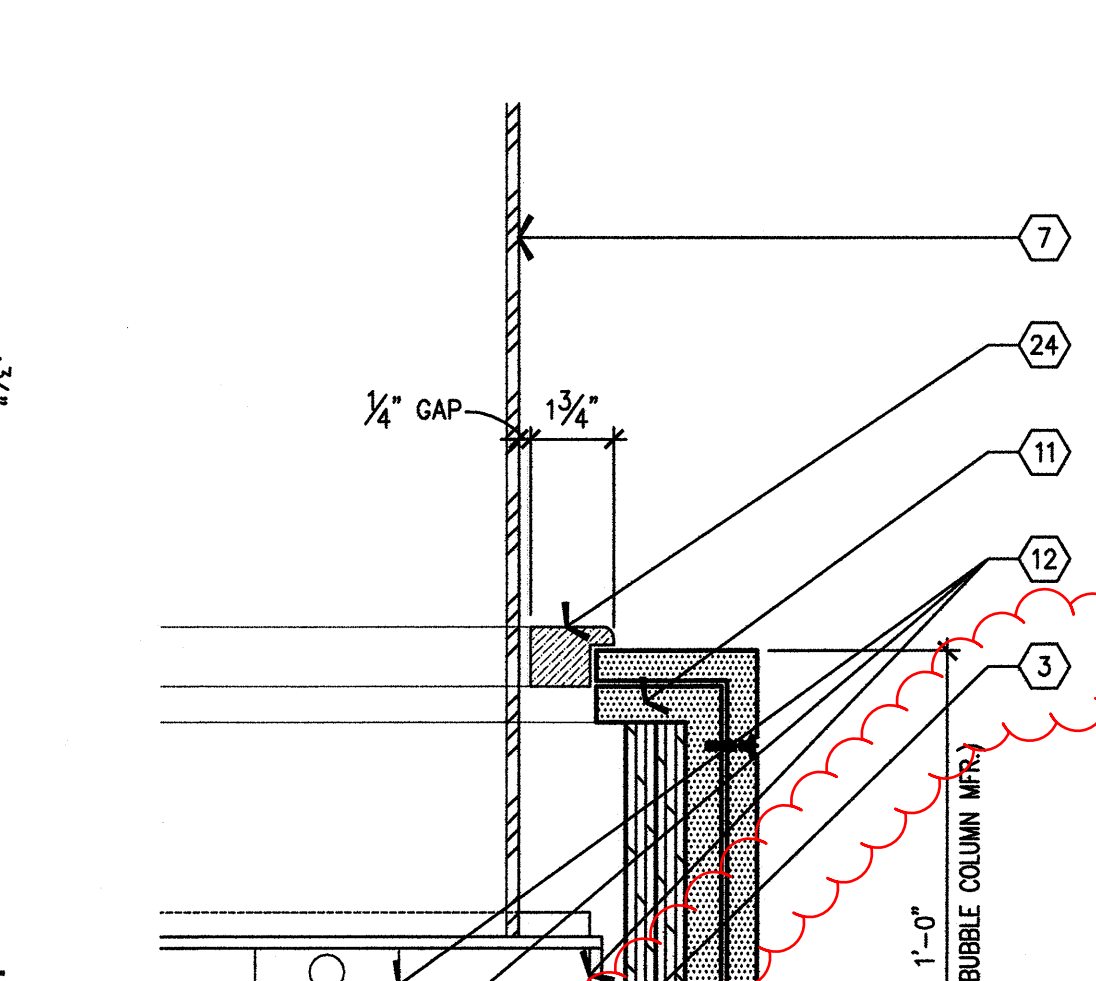
VARIES
DRAWING TITLE

INTERIOR SECTION DETAIL

IA8.9  ASTM#58
CO#97



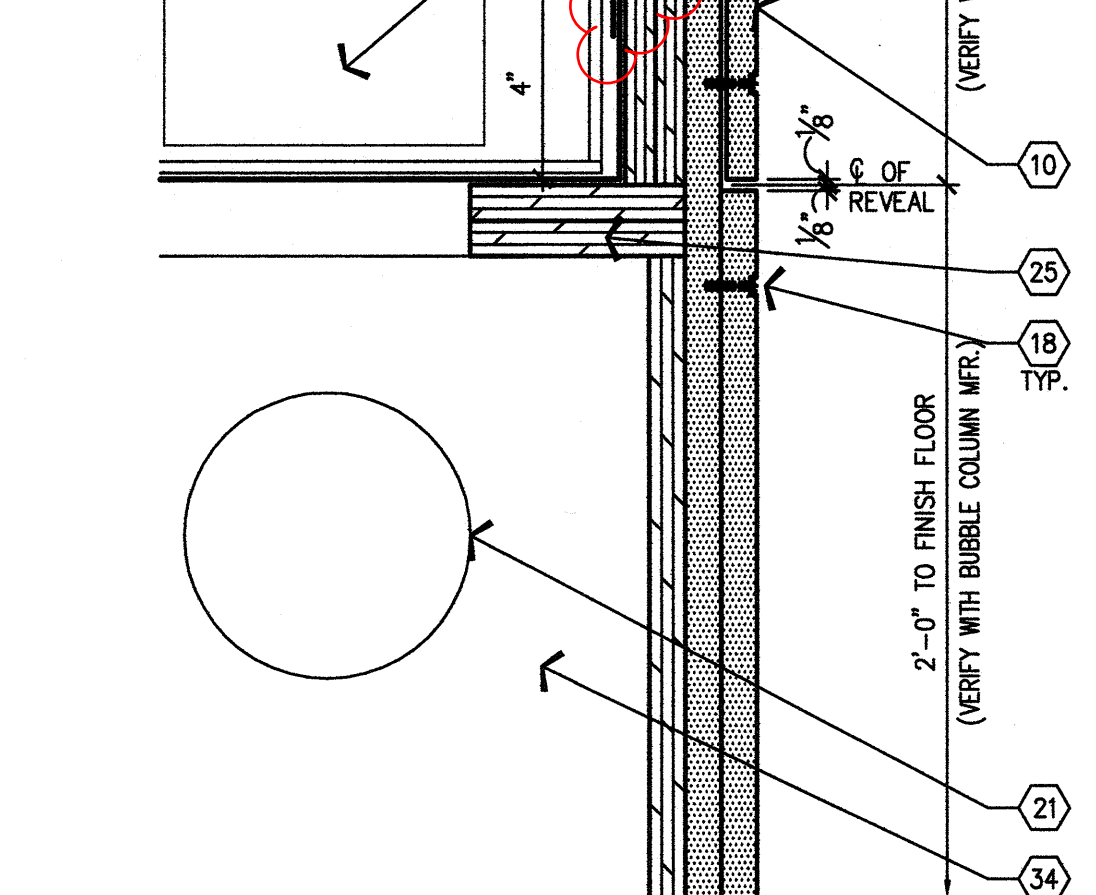
BUBBLE COLUMNS & SEATING - ELEVATION



Architectural section drawing of a building facade. The drawing shows a cross-section of a wall and roof assembly. Key features include:

- Dimensions:**
 - Overall height: 5'-0"
 - Overall width: 12'-0"
 - Section cut dimensions: 2'-0", 1'-0", 3'-0"
- Callouts and Labels:**
 - 8**: Callout to a horizontal structural member.
 - NOTE: ACCESS PANELS SHOWN REMOVED THIS AREA TO SHOW INTERIOR STRUCTURE**: Text pointing to a section of the wall.
 - 2**, **16**, **11**, **9**, **7**, **11**, **10**, **22**, **1**: Various callouts to different components of the facade assembly.
 - B4 IAB.9**: Callout to a vertical structural member.
 - B6 IAB.9 TYP.**: Callout to a circular feature, likely a door or window.
- Structural Details:**
 - Roof structure with trusses and rafters.
 - Wall structure with vertical studs and horizontal members.
 - Foundation and floor slab.

C2 BUBBLE COLUMNS & SEATING - ELEVATION



BENCH SEAT

NOTE: ALL PLASTIC LAMINATE TO BE PL-1 - REFER TO FINISH SCHEDULE FOR SPECIFICATION

NOTE: ALL SEAT/BACK CUSHIONS TO CONFORM TO CLASS-A FIRE RATING REQUIREMENTS

3'-1"

1'-6"

1'-7"

250

15°

15°

15°

15°

15°

96"

CTR.

D2/IA8.9

28 TYP.

10 TYP.

7

11

19

13

20

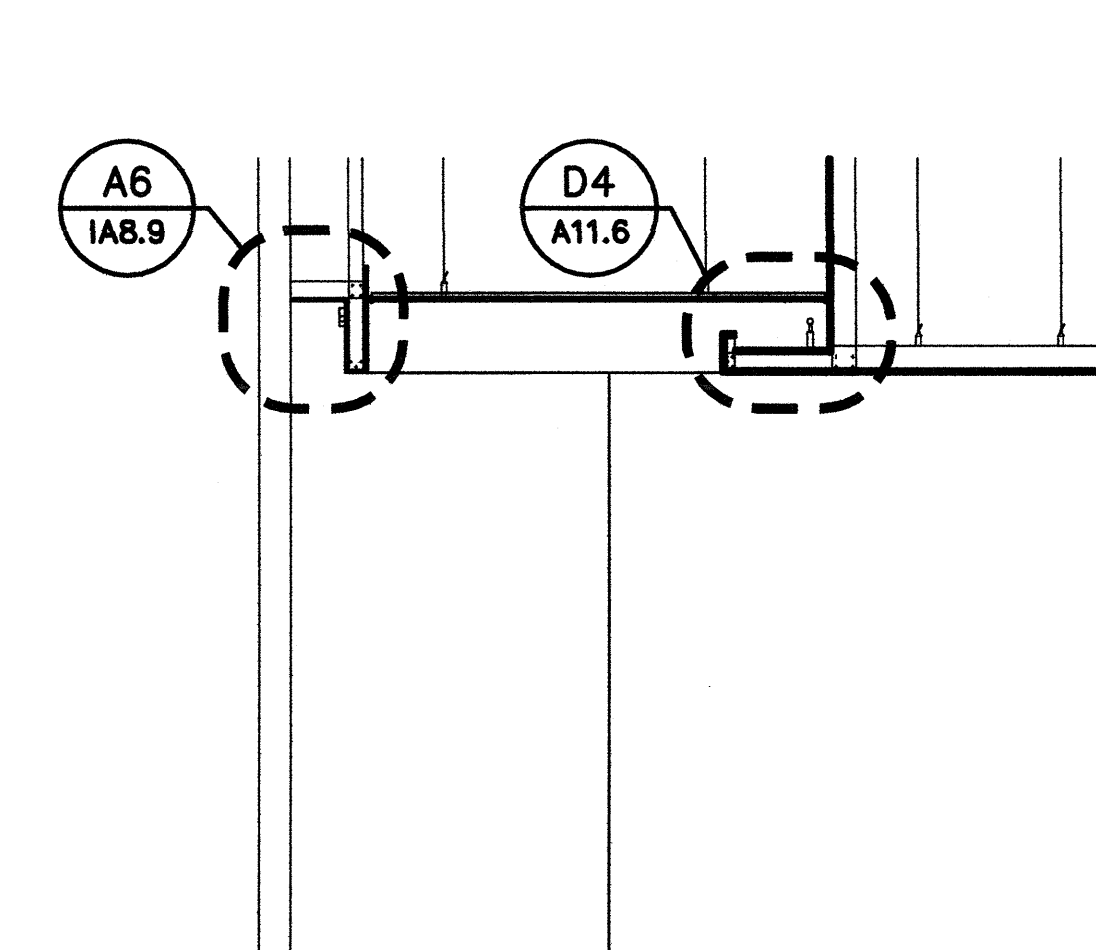
R10'-11 3/8"

R14'-0 3/8"

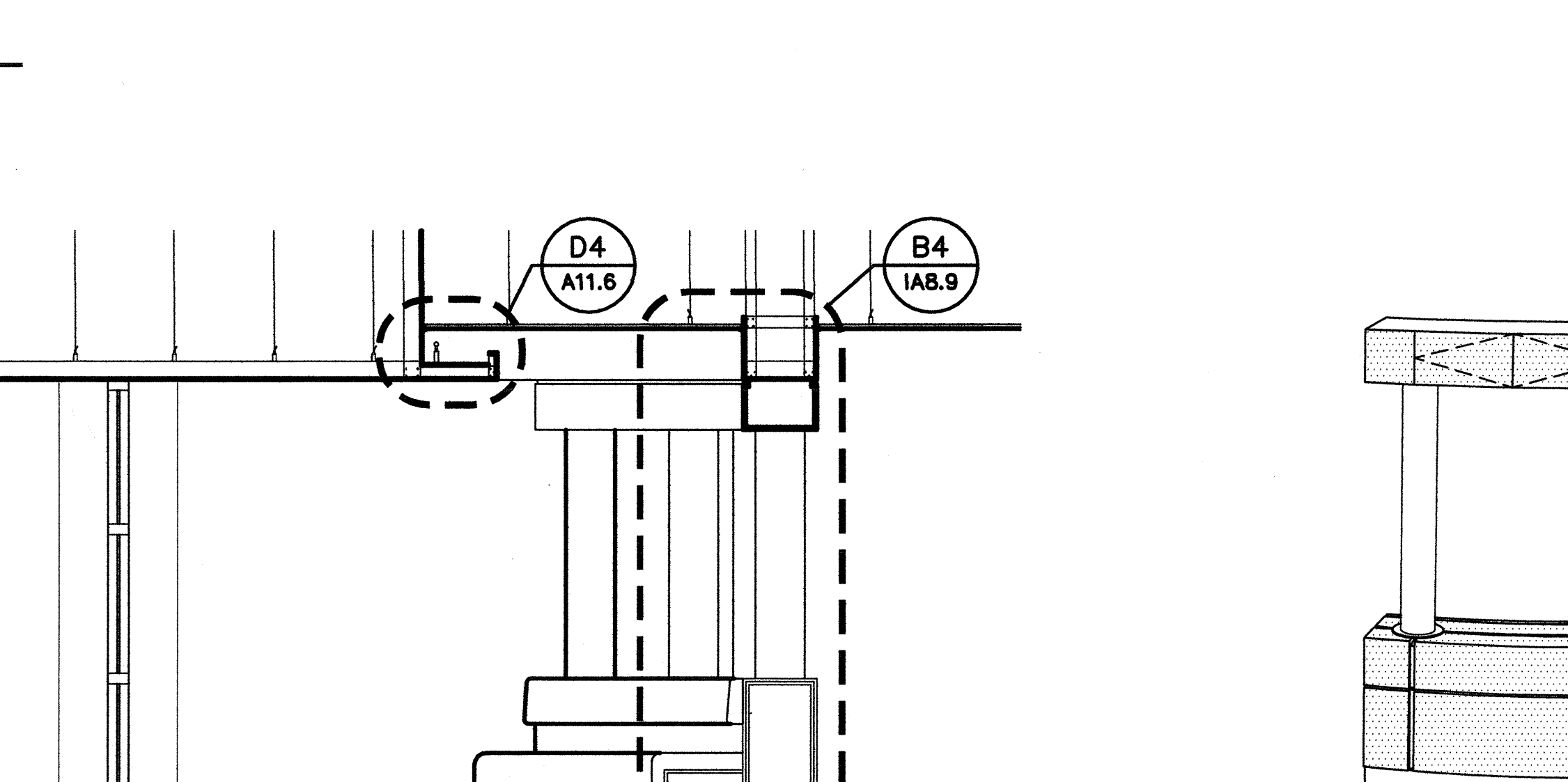
C6/IA8.9 TYP.

C2/IA8.9

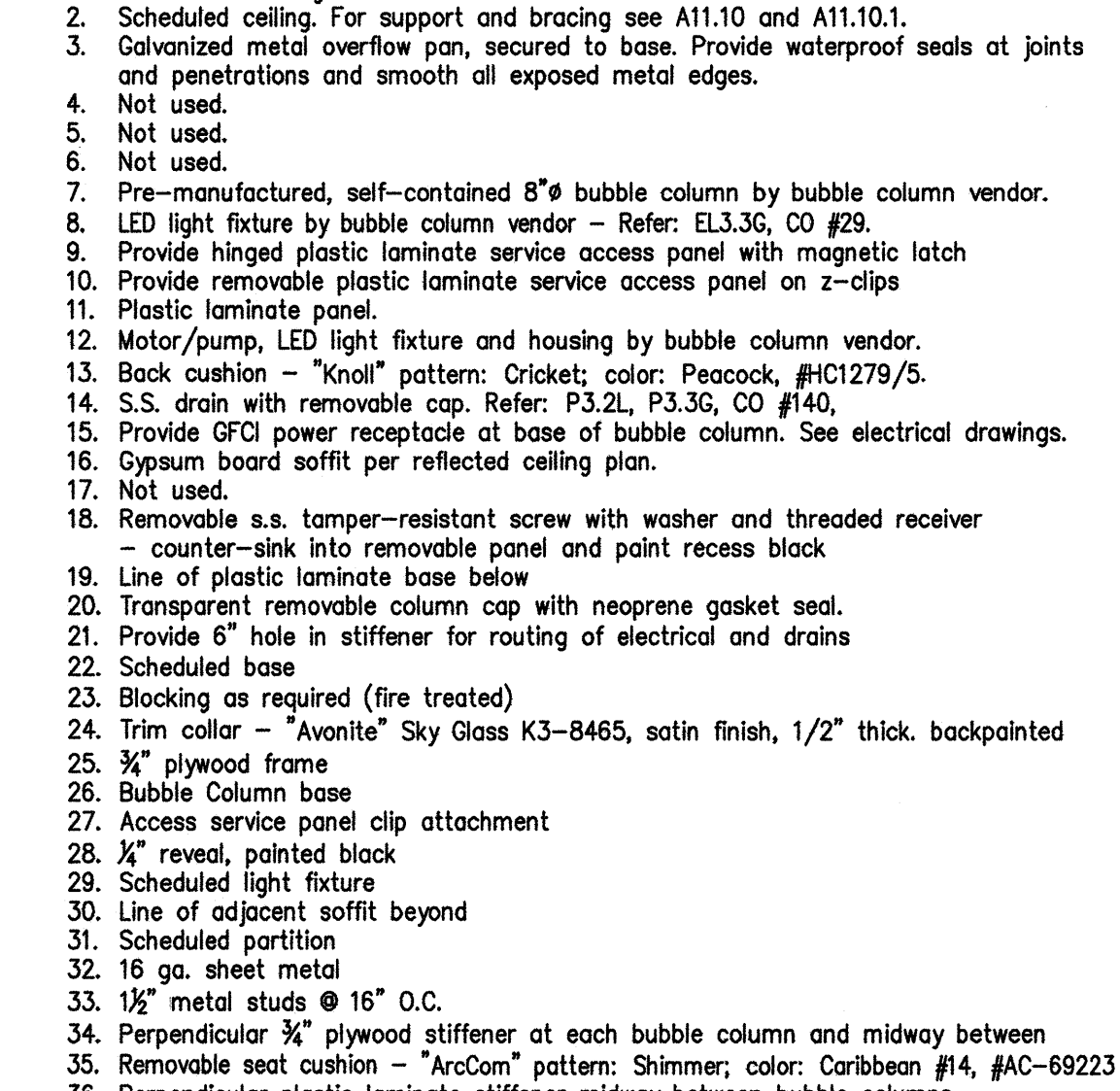
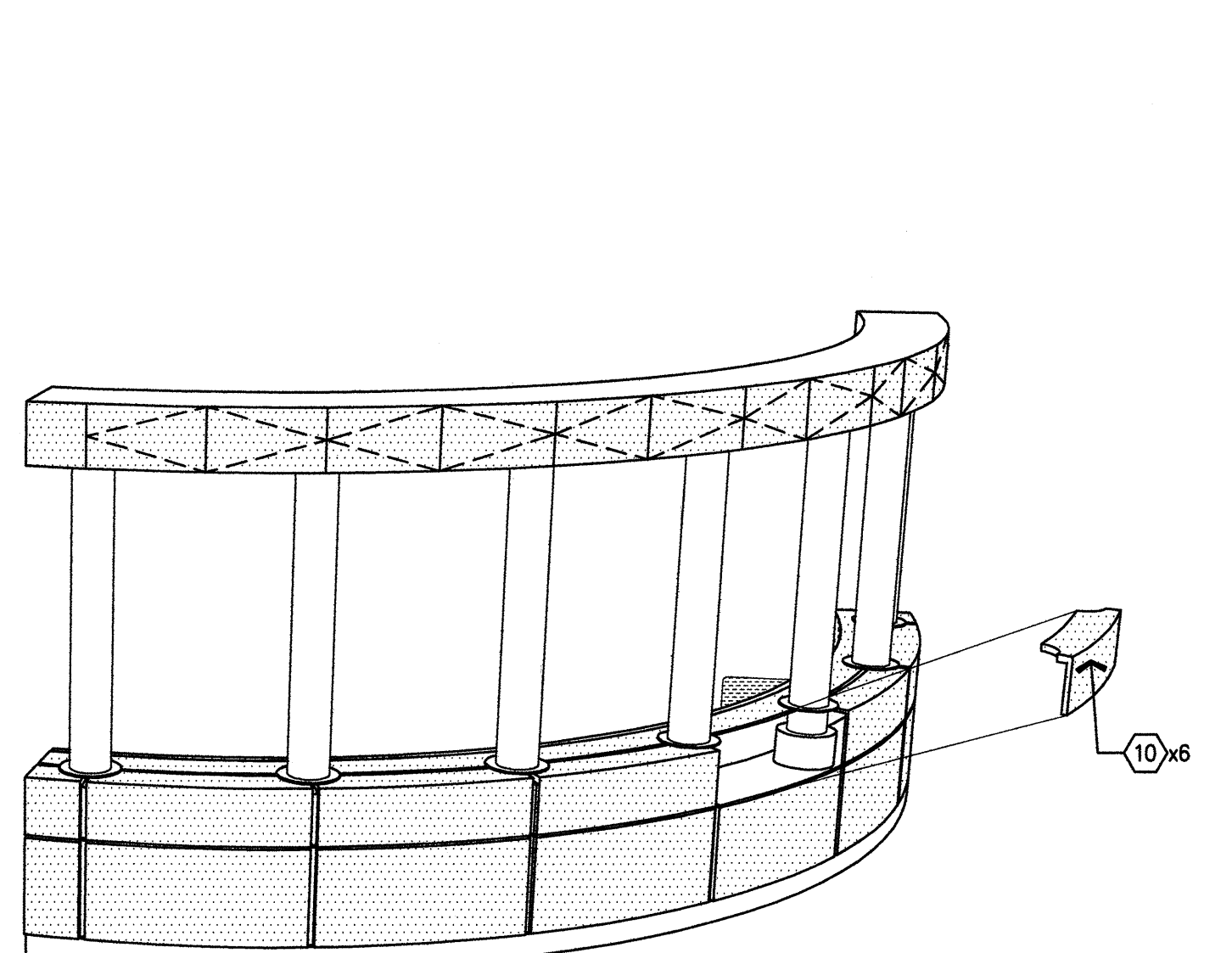
B2 BUBBLE COLUMNS & SEATING - PLAN



(P4) BUBBLE COLUMNS & SEATING - ENLARGED SECTION



(A6) ENLARGED DETAIL (A5) SECTION AT PROCEDURE WAITING



38. #10 RHWS at 12" O.C. Typical
39. 1/2" dia Hilti KBTZ expansion anchors, 2" min embedment

NOTES TO SHEET

1. Scheduled flooring.
2. Scheduled ceiling. For support and bracing see A11.10 and A11.10.1.
3. Galvanized metal overflow pan, secured to base. Provide waterproof seals at joints and penetrations and smooth all exposed metal edges.
4. Not used.
5. Not used.
6. Not used.
7. Pre-manufactured, self-contained 8" bubble column by bubble column vendor.
8. LED light fixture by bubble column vendor - Refer: E1.3.36, CO #29.
9. Provide hinged plastic laminate service access panel with magnetic latch
10. Provide removable plastic laminate service access panel on 2-dips
11. Plastic laminate panel
12. Motor/pump, LED light fixture and housing by bubble column vendor.
13. Back cushion - "Knoll" panel: Oricket; color: Peacock; #C1279/5.
14. U.S. drain with movable cap. Refer: F3.2L, P3.36, CO #140.
15. Provide GFO power receptacle at base of bubble column. See electrical drawings.
16. Gypsum board split per reflected ceiling plan.
17. Not used.
18. Removable s.s. tamper-resistant scum with washer and threaded receiver - counter-sink into removable panel and paint recess black
19. Line of plastic laminate base below
20. Transparent removable column cap with neoprene gasket seal.
21. Provide 6" hole in stiffener for routing of electrical and drains
22. Scheduled base
23. Blocking as required (fire treated)
24. Trim collar - "Avonite" Sky Gloss K3-8465, satin finish, 1/2" thick, backpainted
25. 3/4" plywood frame
26. Bubble Column base
27. Access service panel clip attachment
28. 1/4" reveal, painted black
29. Scheduled light fixture
30. Line of adjacent soffit beyond
31. Scheduled partition
32. 1/8" g. sheet metal
33. 1/2" metal studs @ 16" O.C.
34. Perpendicular 3/4" plywood stiffener at each bubble column and midway between
35. Removable scum cushion - "ArcCon" panel: Shimmer; color: Caribbean #1, RAC-69223
36. Perpendicular plastic laminate stiffener midway between bubble columns.
37. 2x4 RHHS at 16" O.C. Typical
38. 2x4 RHHS at 12" O.C. Typical
39. 1/2" dia. Hilti KBZT expansion anchors, 2" min embedment @ 16" O.C. between column