

FKP Architects

ARCHITECT OF RECORD

*Architect of Record signature line only; this drawing was not prepared under the direct supervision of the Architect of Record. The direct responsibility for preparation of this sheet lies with its corresponding professional stamp and signature. The signature of the Architect of Record in general responsible charge of the project is provided as required by Title 24, Part 9, Section 7-115 (a).

ARCHITECT - PAUL C. GLORIOD

Changes on these drawings do not consist of materially altered changes to approved drawings and don't require a change order.
OSHPD review ACO
OSHPD review FLSO
OSHPD review DSE

CONSULTANT

T M A D
TAYLOR
& GAINES

• STRUCTURAL
• MECHANICAL
• ELECTRICAL
• CIVIL

320 North Halstead Street, Suite 200
Pasadena, California 91107
Phone: 626.351.8881
Fax: 626.351.5319
Project No. 4206.075



REVISIONS

Refer to sheet S0 for revisions not noted

11/17/10	OSHPD Change Order 101
05/30/12	OSHPD Change Order 364

RFI 2573 Clarify Dim.

APPROVAL

PRO 2012-05257
REVIEWED IN ACCORDANCE WITH
THE REQUIREMENTS OF T24, CCR
APPROVED

5-30-12
Date
Office of Statewide Health
Planning & Development
FACILITIES DEVELOPMENT DIVISION

PROJECT NAME

CHILDREN'S HOSPITAL
OF ORANGE COUNTY

455 S. Main St.
Orange, CA 92668-3874

TOWER II



PROJECT NUMBER

12011.00
Increment #7

OSHPD - PROJECT NUMBER
IL 072072-30

ISSUE

OSHPD Permit

DATE

01/28/2010

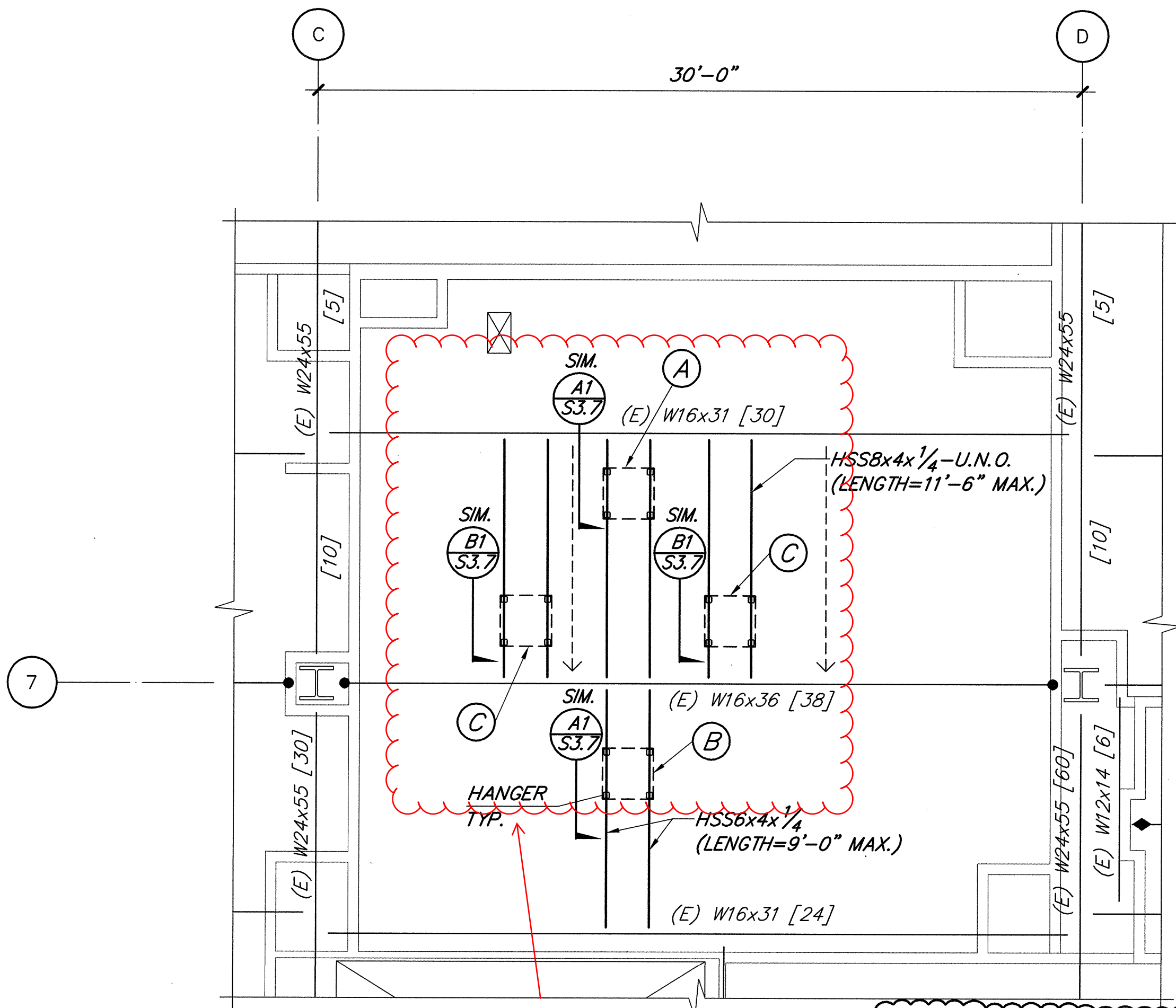
SCALE

DRAWING TITLE

PLANS

DRAWING NUMBER

S2.2

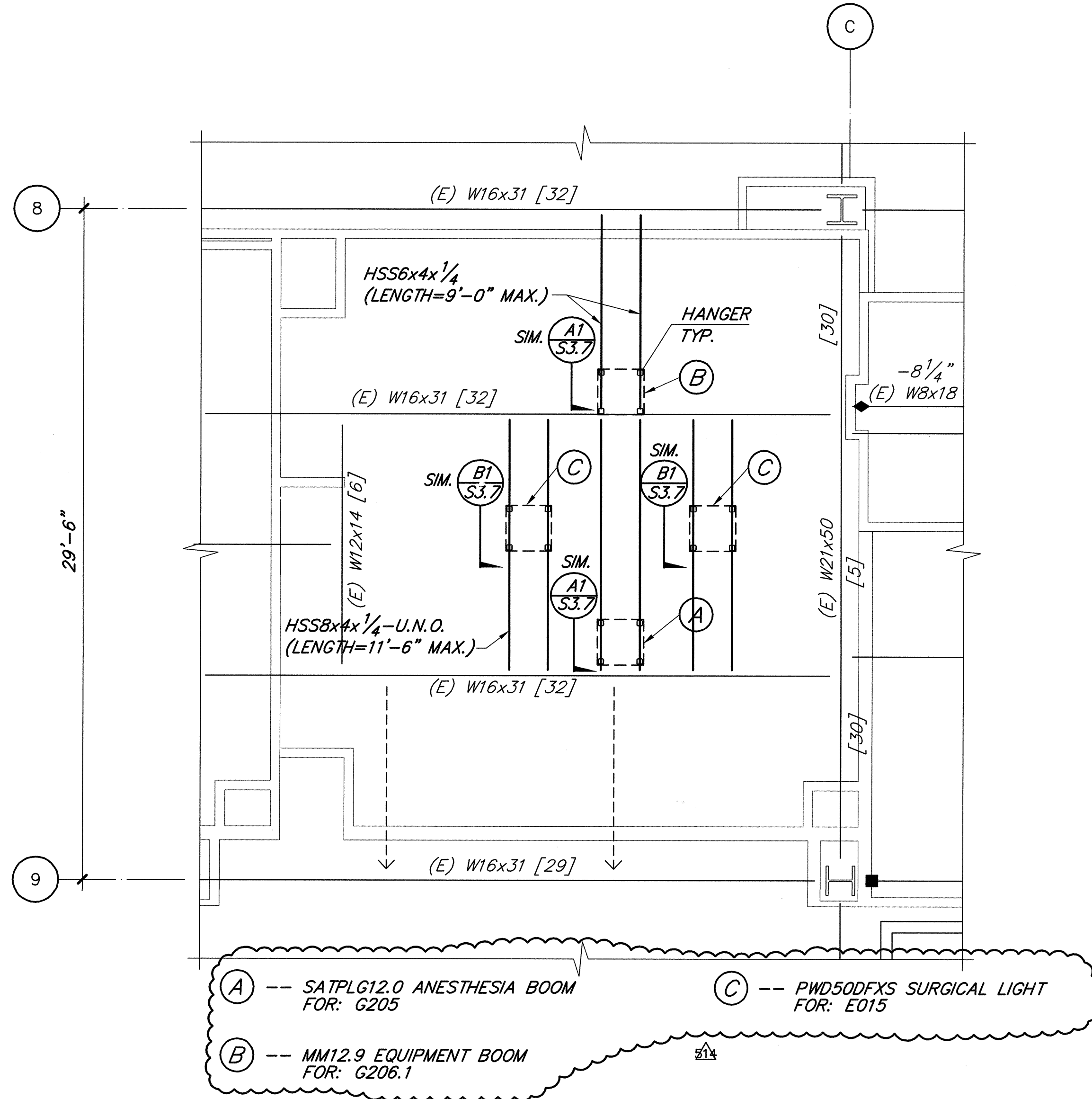


RFI 2858 Equipment tube steel support is in conflict w/ electrical floor box fireproofing above. Ref. RFI maintaining Req'd fireproofing

- (A) -- SATPLG12.0 ANESTHESIA BOOM FOR: G205
(B) -- MM12.9 EQUIPMENT BOOM FOR: G206.1
(C) -- PWD50DFXS SURGICAL LIGHT FOR: E015

PARTIAL PLAN - EQUIPMENT SUPPORTS AT ROOM 3.001.39 O.R.

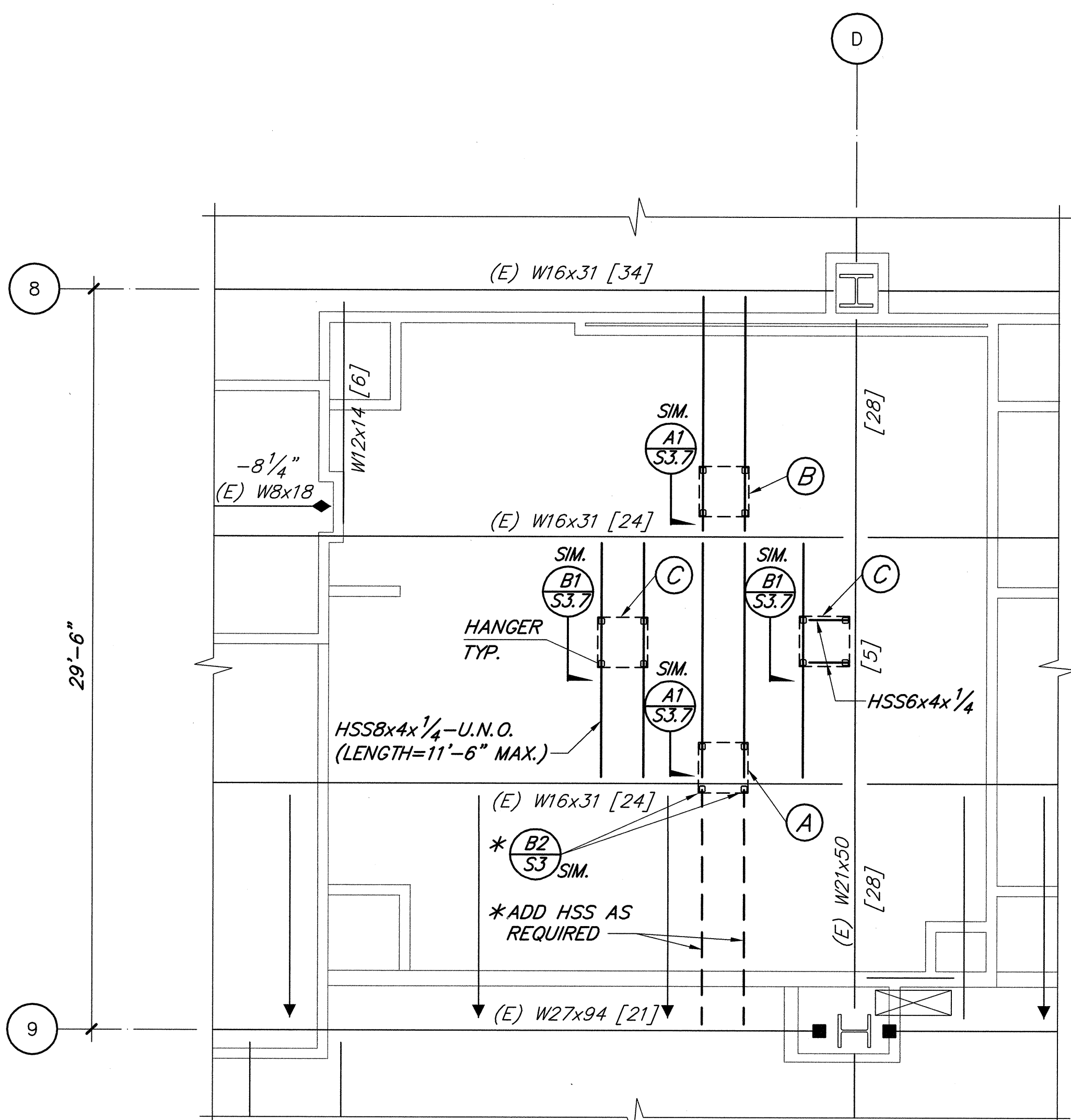
1/4" C4



- (A) -- SATPLG12.0 ANESTHESIA BOOM FOR: G205
(B) -- MM12.9 EQUIPMENT BOOM FOR: G206.1
(C) -- PWD50DFXS SURGICAL LIGHT FOR: E015

PARTIAL PLAN - EQUIPMENT SUPPORTS AT ROOM 3.001.25 O.R.

1/4" C1

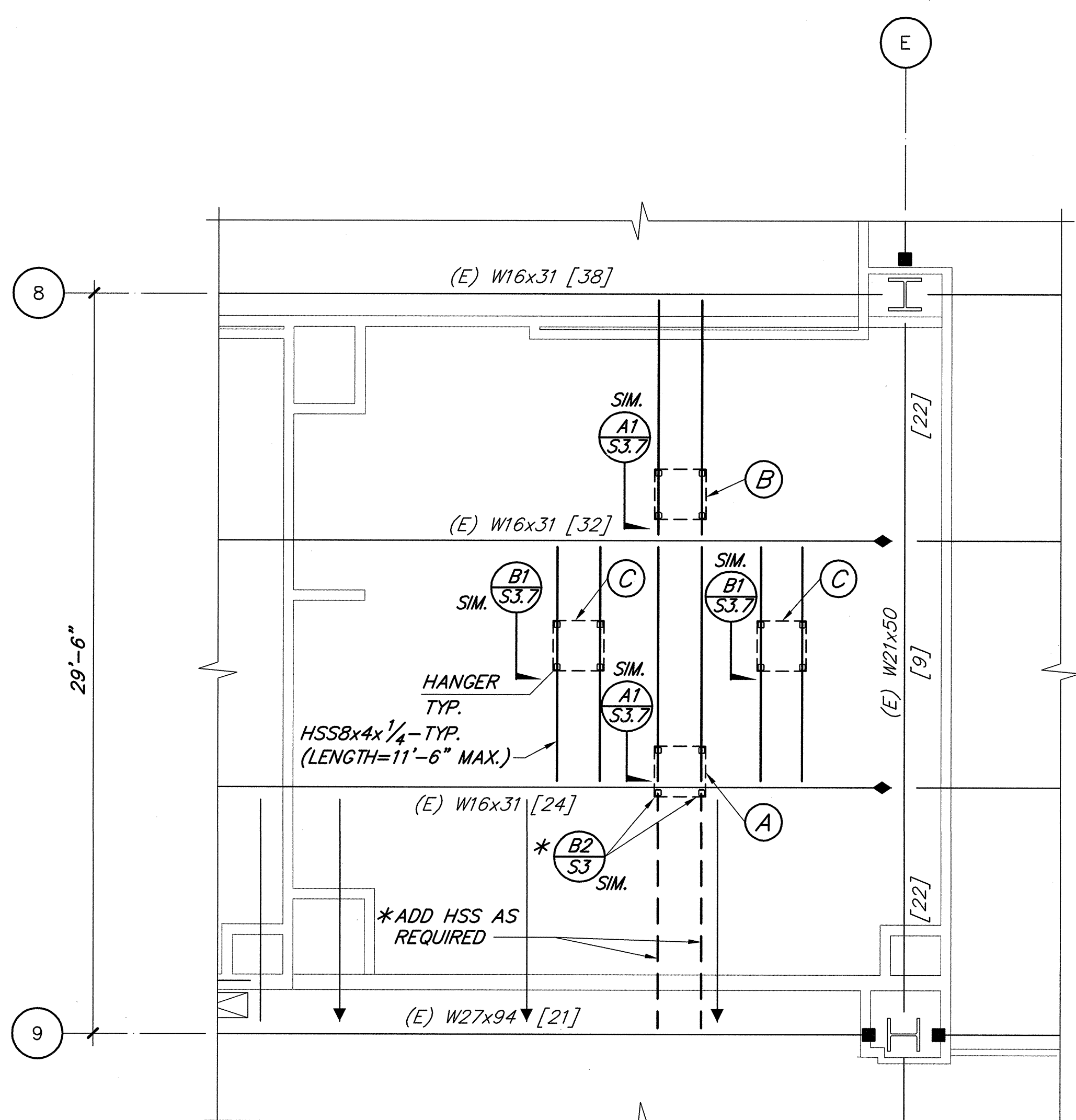


- (A) -- SATPLG12.0 ANESTHESIA BOOM FOR: G205
(B) -- MM12.9 EQUIPMENT BOOM FOR: G206.1
(C) -- PWD50DFXS SURGICAL LIGHT FOR: E015

*NOTE:
ADDITIONAL HSS MIGHT BE ADDED IF HANGER INSTALLATION EXCEEDS DETAIL (B2) LIMITATIONS.

PARTIAL PLAN - EQUIPMENT SUPPORTS AT ROOMS 3.001.21 O.R. ORTHO

1/4" A4



- (A) -- SATPLG12.0 ANESTHESIA BOOM FOR: G205
(B) -- MM12.9 EQUIPMENT BOOM FOR: G206.1
(C) -- PWD50DFXS SURGICAL LIGHT FOR: E015

*NOTE:
ADDITIONAL HSS MIGHT BE ADDED IF HANGER INSTALLATION EXCEEDS DETAIL (B2) LIMITATIONS.

PARTIAL PLAN - EQUIPMENT SUPPORTS AT ROOM 3.001.19 O.R.

1/4" A1