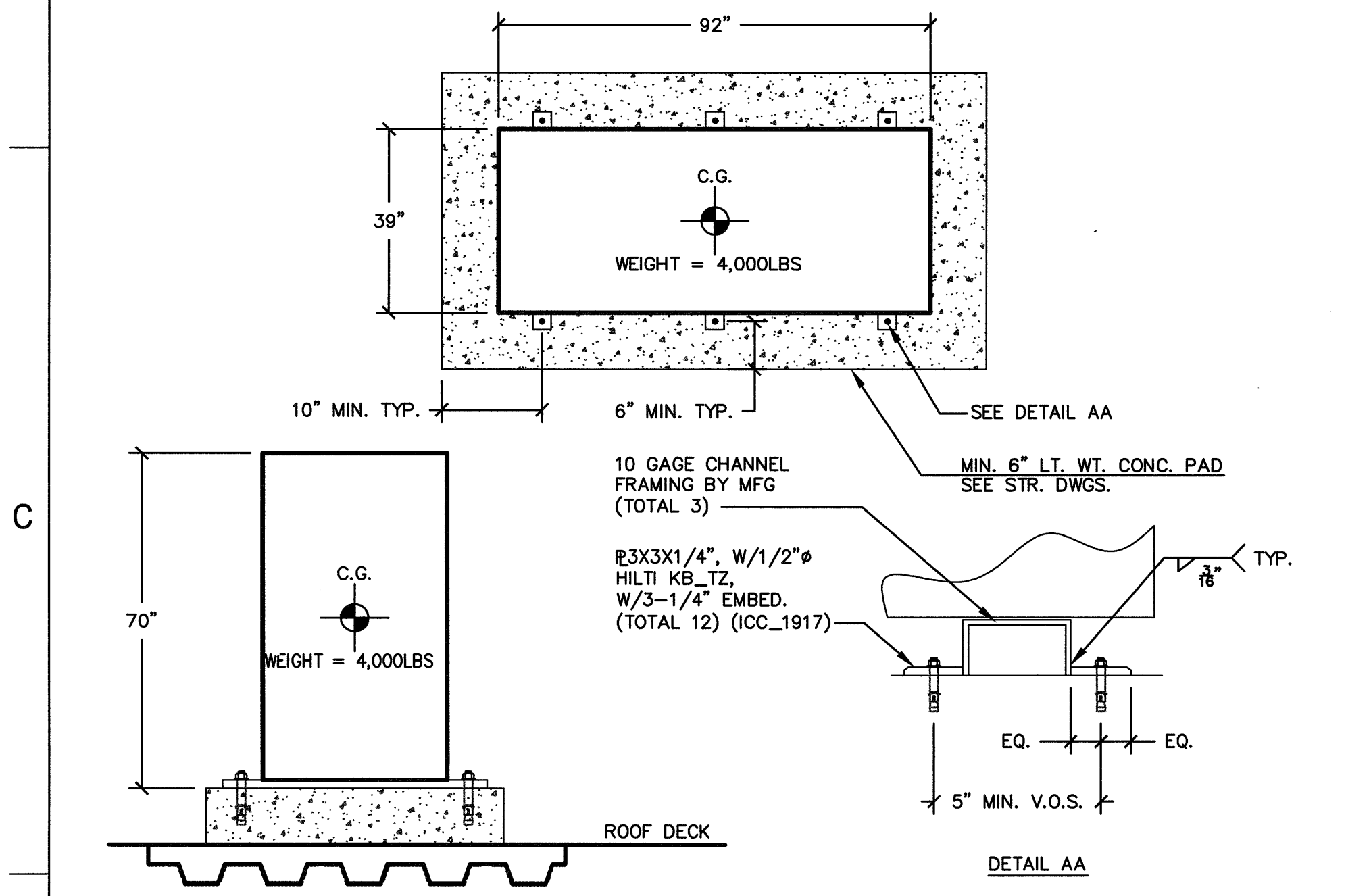


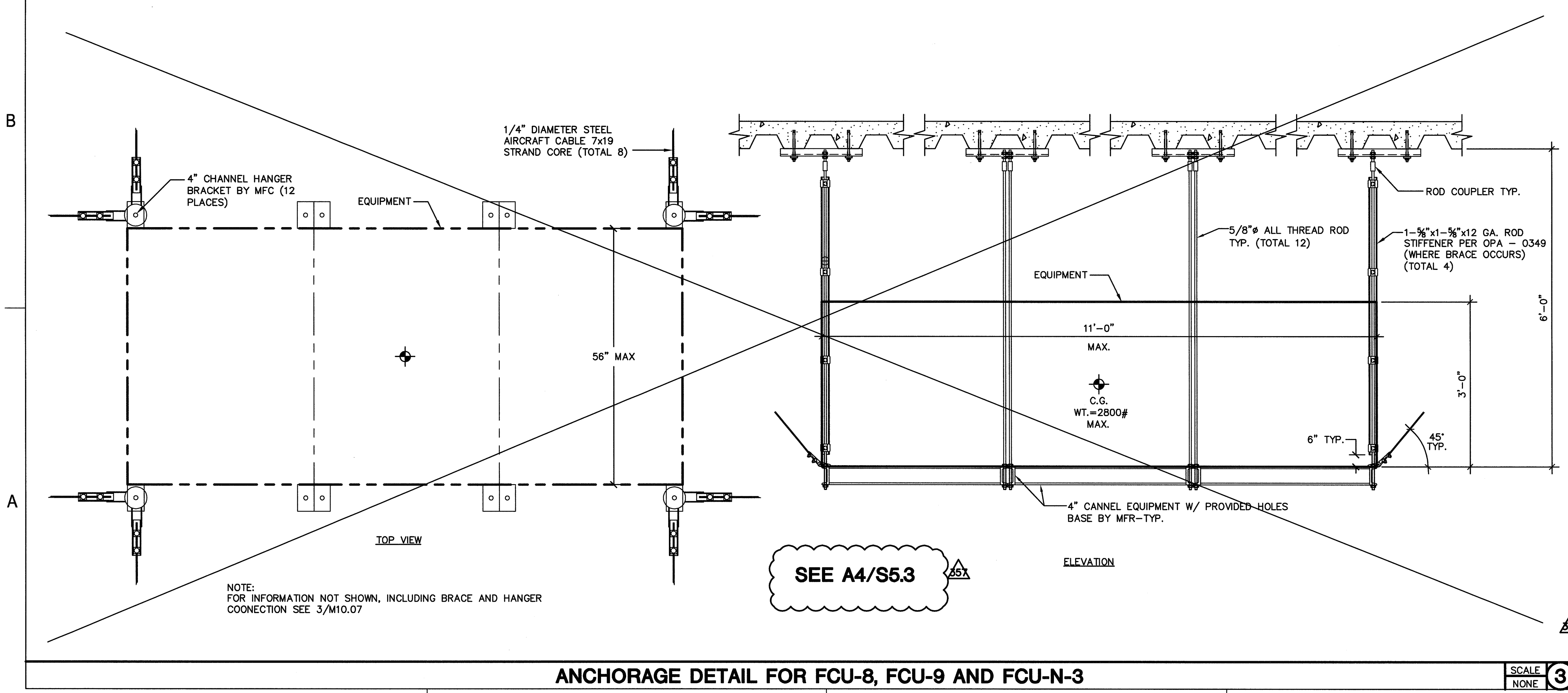
MRI CHILLER ANCHORAGE DETAIL

SCALE: NONE 4



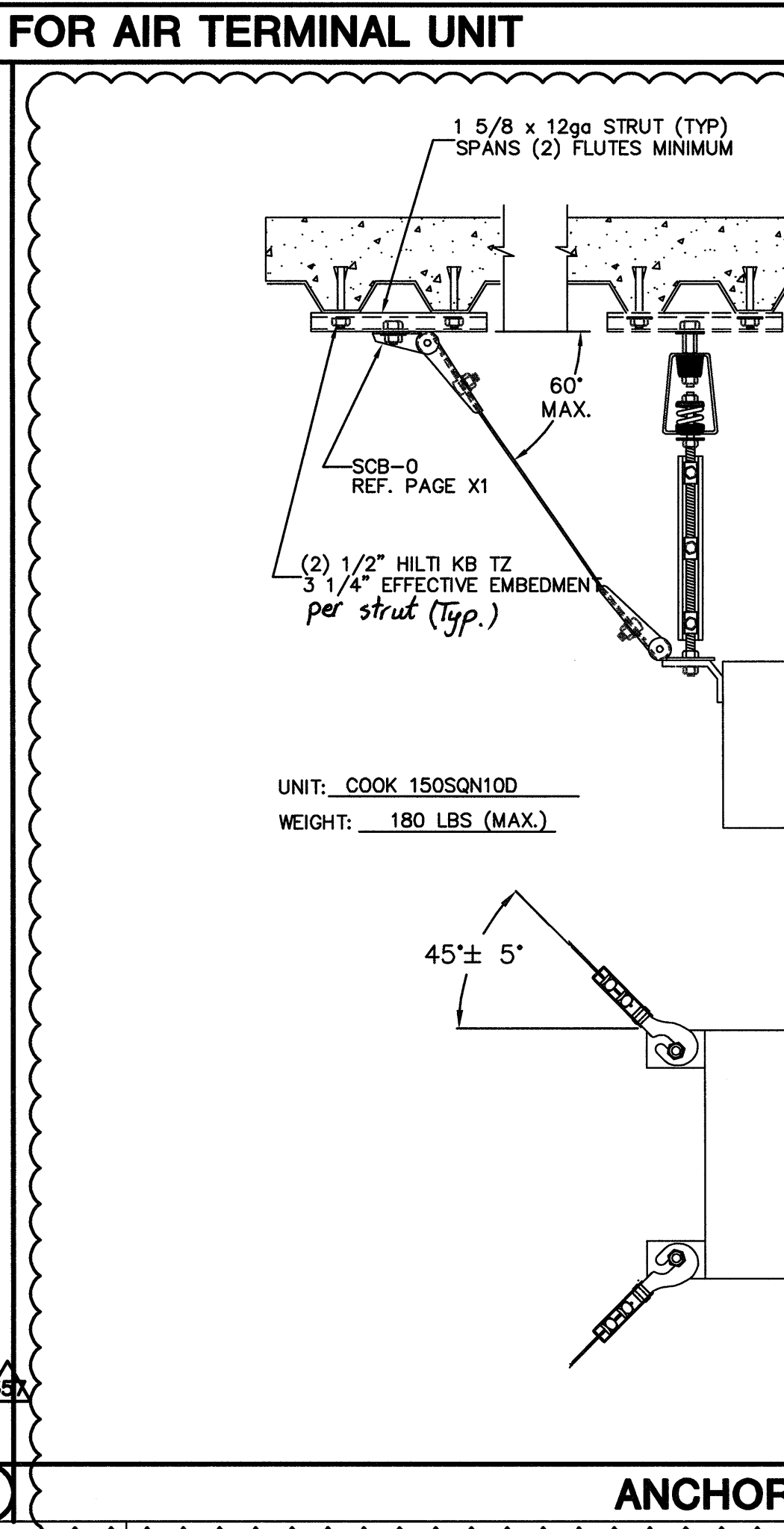
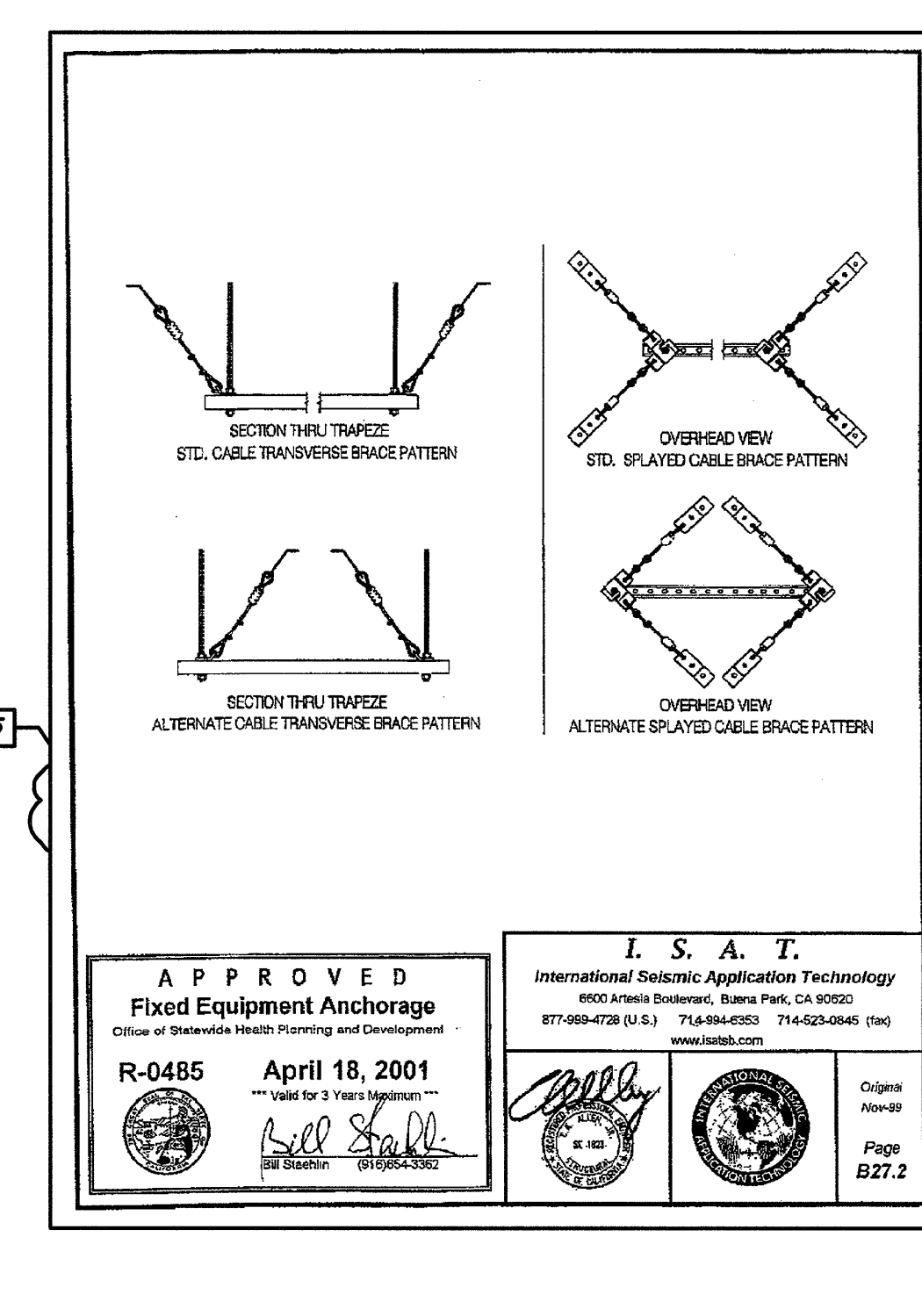
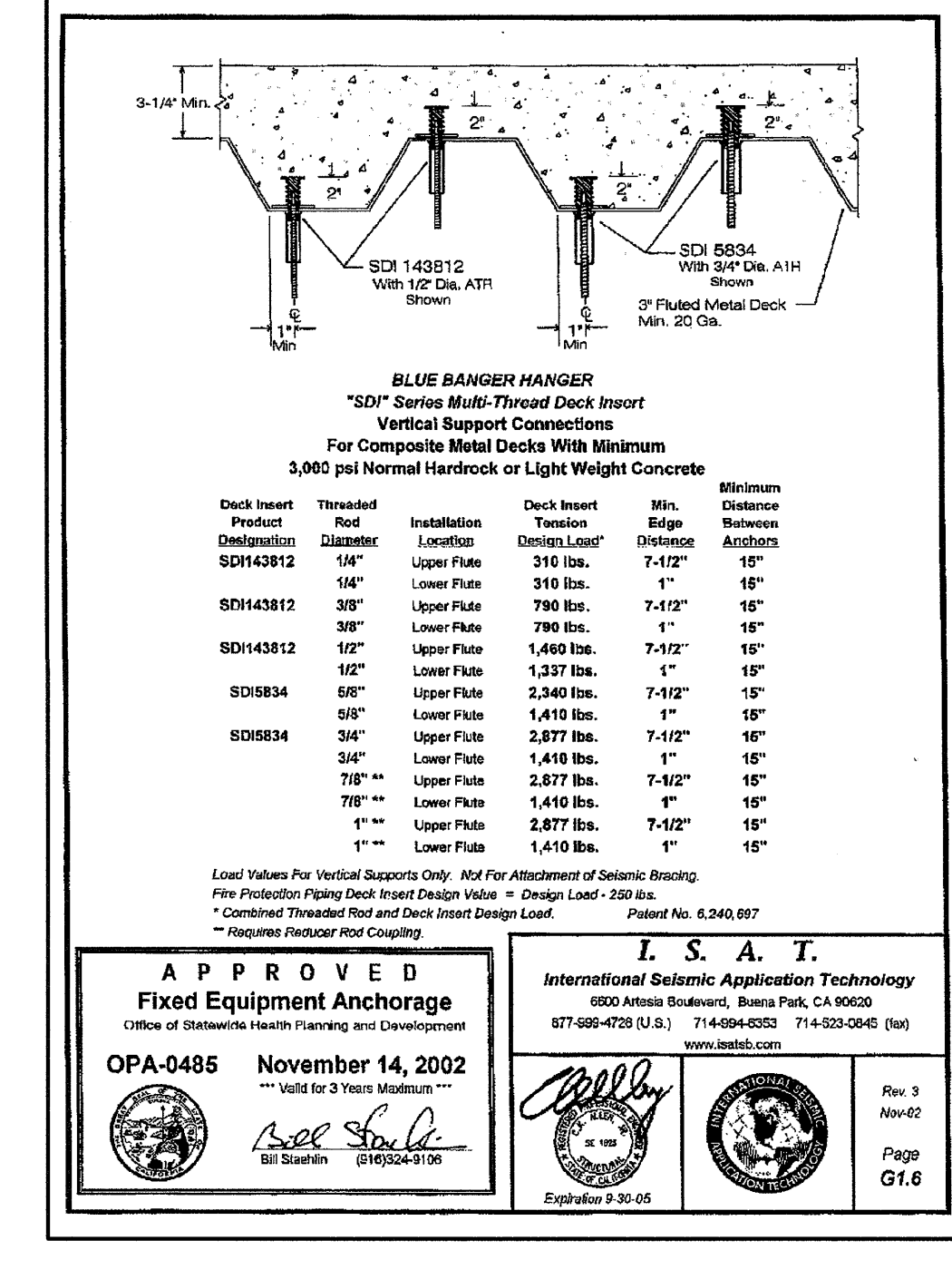
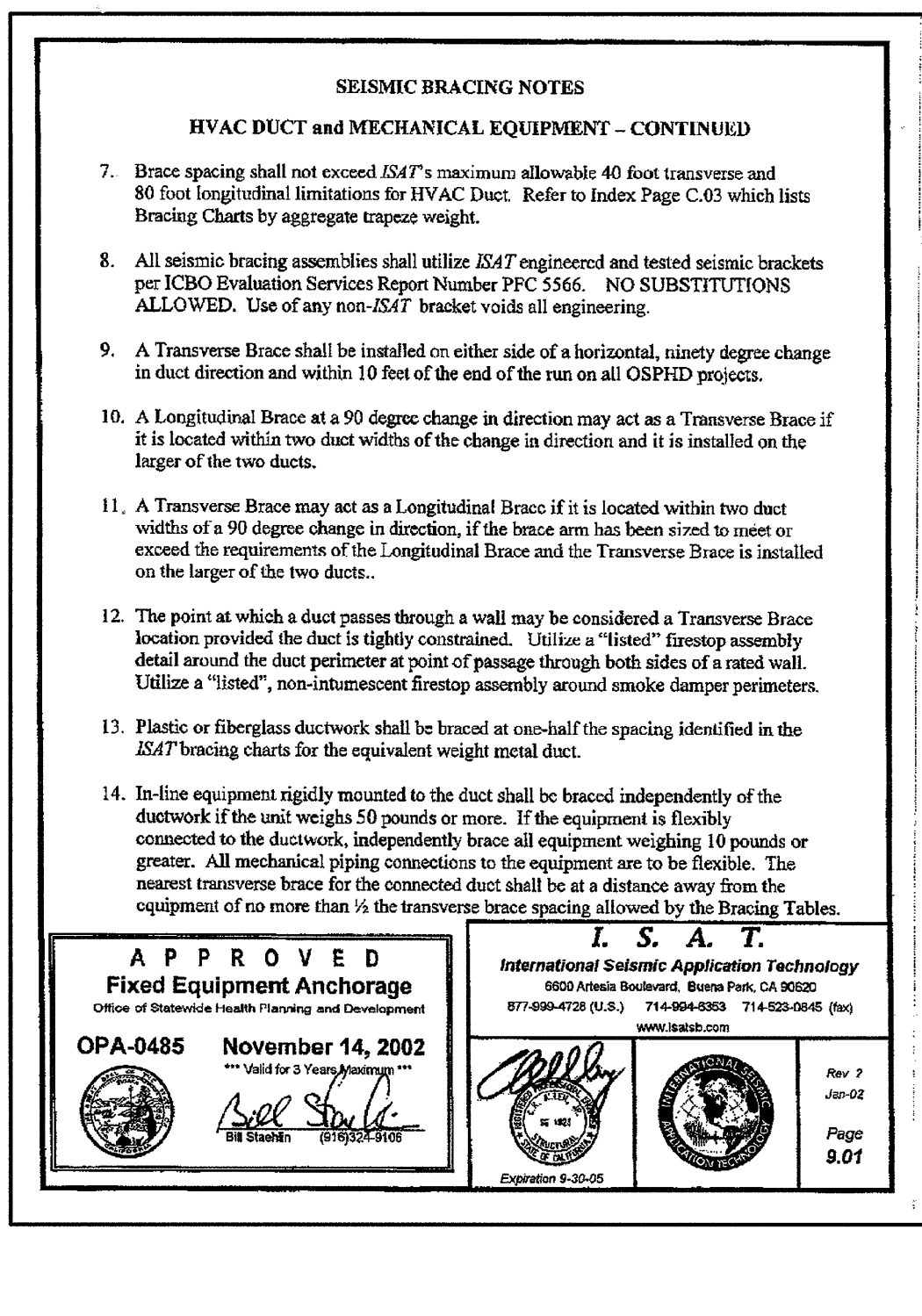
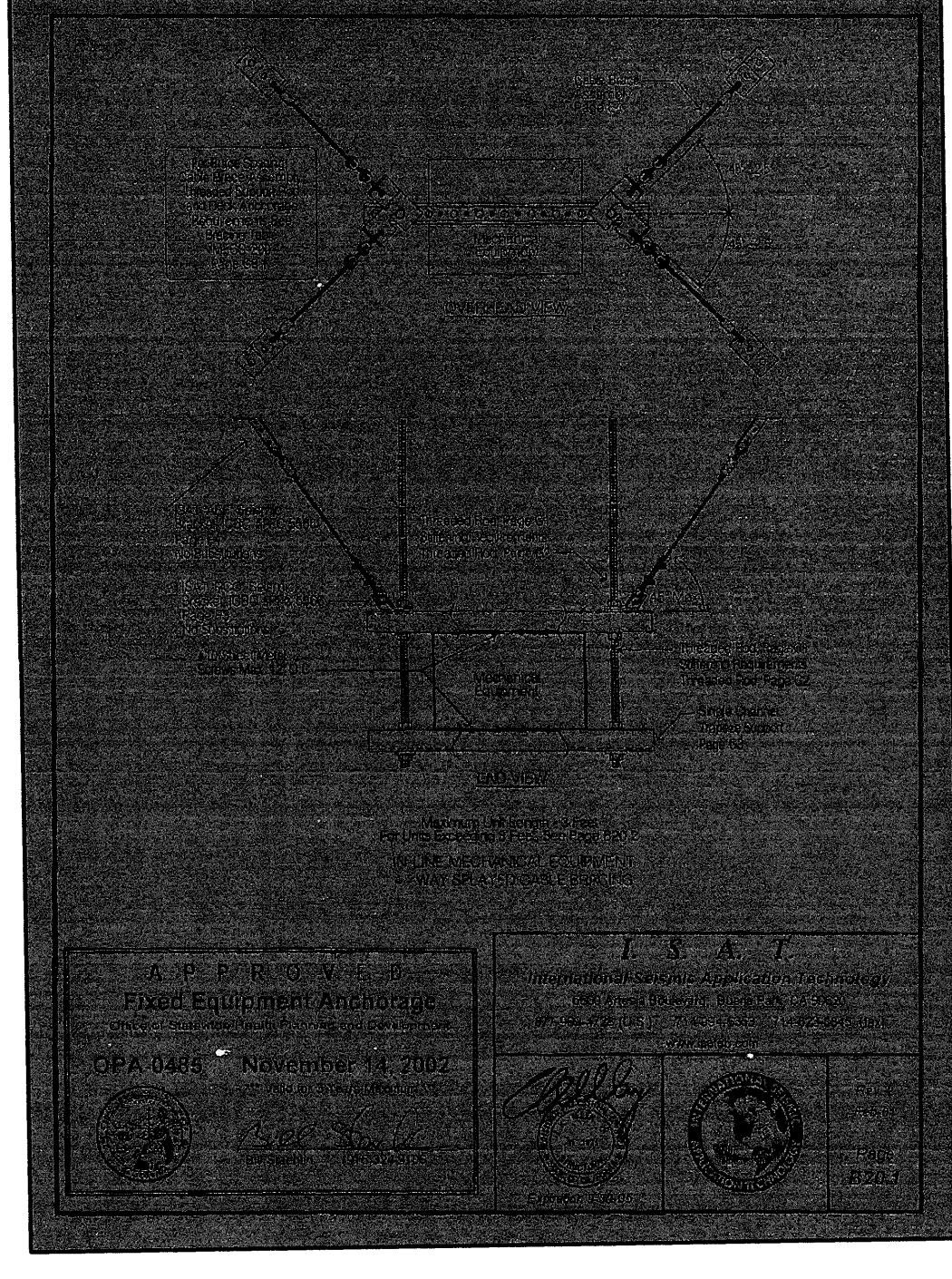
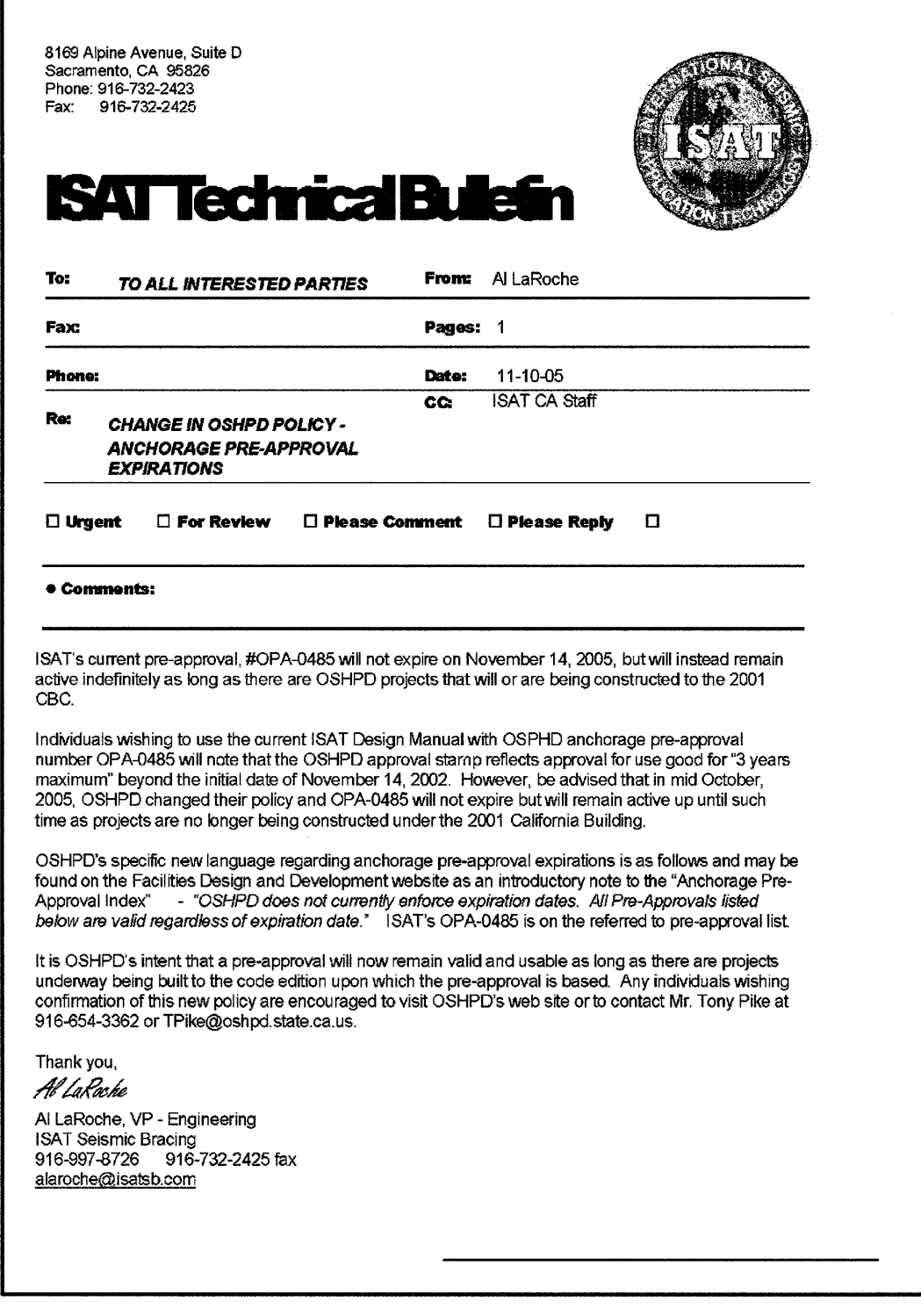
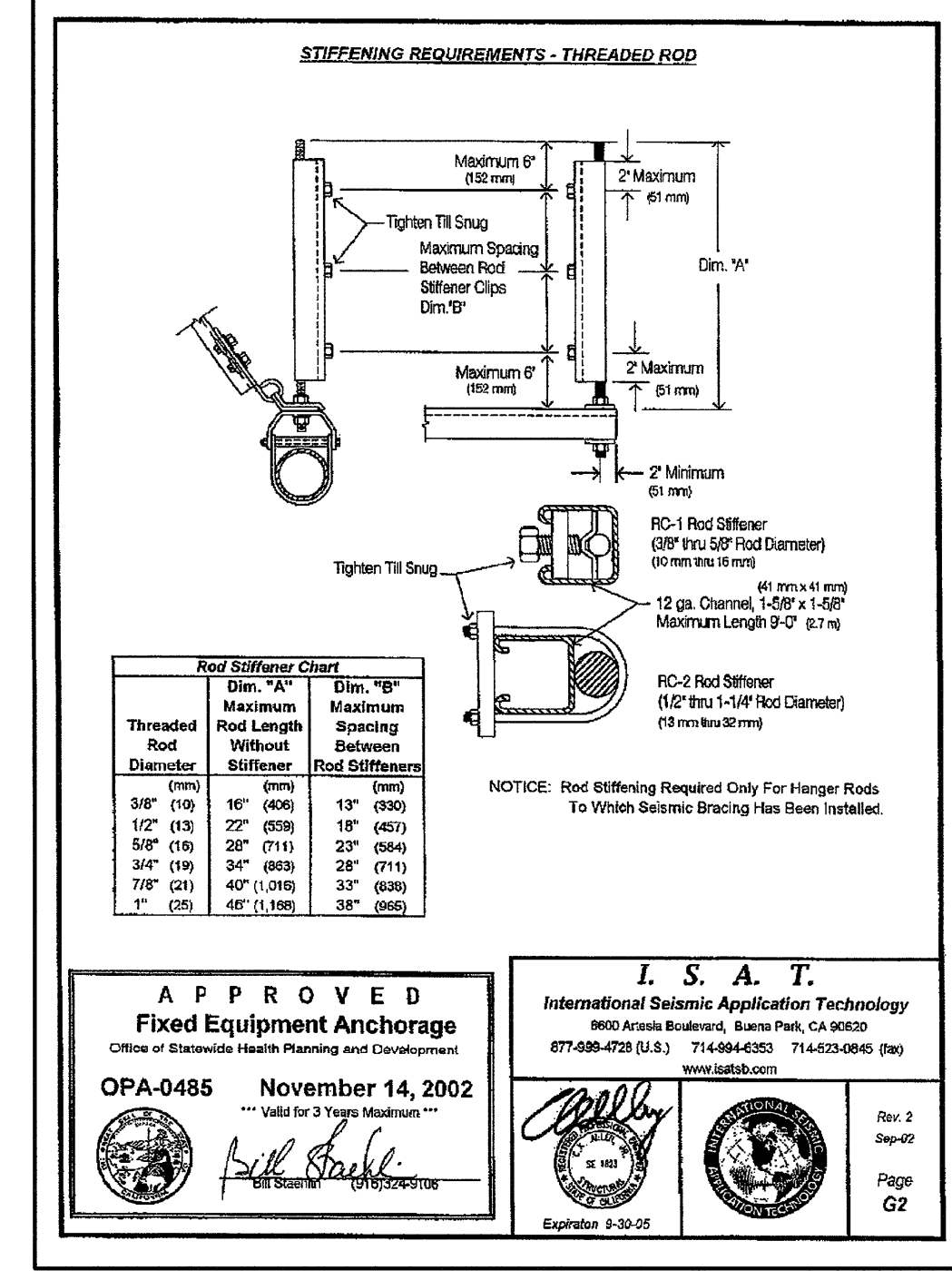
CT CHILLER ANCHORAGE DETAIL

SCALE: NONE 5



ANCHORAGE DETAIL FOR FCU-8, FCU-9 AND FCU-N-3

SCALE: NONE 3



ANCHORAGE DETAIL FOR GEF-E8

SCALE: NONE 2

FKP Architects

ARCHITECT OF RECORD

Architect of Record signature line only, this drawing was not prepared under the direct supervision of the Architect of Record. The direct responsibility for preparation of this sheet lies with its corresponding professional stamp and signature. The signature of the Architect of Record in general represents the project is provided as required by Title 24, Part 7, Section 7-115 (a).

ARCHITECT - PAUL C. GLORIO

CONSULTANT

T M A D  
TAYLOR & GAINES

STRUCTURAL  
MECHANICAL  
ELECTRICAL  
CIVIL

100 South Anaheim Boulevard, Suite 150  
Anaheim, California 92805  
Phone: 714.490.5555 Fax: 714.490.5560  
Project No. 2305-163-07

CHANGES ON THESE DRAWINGS DO NOT CONSTITUTE A MATERIALLY ALTERED CHARGE TO THE APPROVED DRAWING AND DON'T REQUIRE A CHANGE ORDER.

OSHPD review ACO  
OSHPD review FLSO  
OSHPD review DSE

REVISIONS

10/10/2010	CHANGE ORDER #69
09/21/2011	CHANGE ORDER #278

APPROVAL

Office of Statewide Health Planning and Development  
CHANGE ORDER #278  
INSTRUCTION BULLETIN  
REVIEWED IN ACCORDANCE WITH THE REQUIREMENTS OF T24, CCR

PROJECT NAME

CHILDREN'S HOSPITAL OF ORANGE COUNTY

455 S. Main St.  
Orange, CA 92668-3874

RECEIVED

TOWER II September 21 2011  
McCarthy

CHOC HOSPITAL

PROJECT NUMBER

12011.00  
Increment #7

OSHPD - PROJECT NUMBER

IL 072072-30

ISSUE

OSHPD PERMIT

DATE

01/27/2010

SCALE

DRAWING TITLE

MECHANICAL DETAILS - HVAC EQUIPMENT - ANCHORAGE DETAILS

DRAWING NUMBER

M10.09